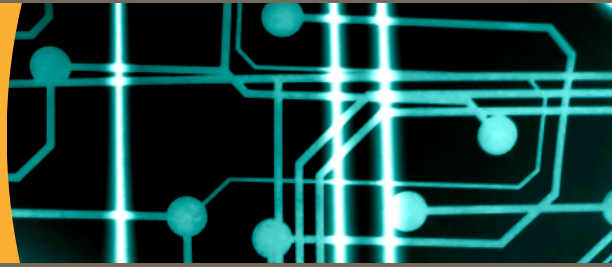


APPLICATION BRIEF - SERIAL SOLUTIONS

Cyclades® CS Console Servers



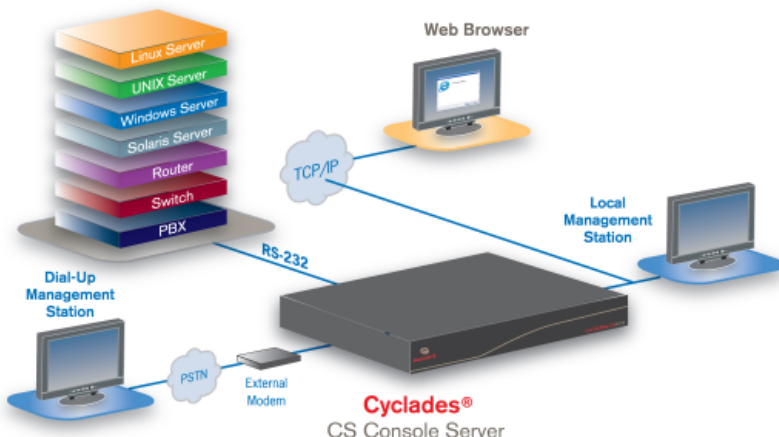
SECURELY ACCESS ANY SERIAL DEVICE

Consolidated access to serial devices such as servers, routers, switches and serial power units ease management complexities and security concerns in evolving computing environments. The Cyclades CS console servers simplify access to serial devices with (a.) convenient management over an IP network via an onboard Web interface, (b.) at the rack through the local console port or (c.) dial-up with an external modem.

The Cyclades CS console servers include security options such as Local, RADIUS, TACACS+, Active Directory and LDAP for verifying users. Security benefits also provide separate authentication to access ports and the console server. Security features help reduce unauthorized access and integrate easily into existing security policies. The Cyclades CS console servers also support all major encryption algorithms.

TYPICAL ENVIRONMENTS

Available in 8- and 16-port models, the Cyclades CS4008 and CS4016 console servers let you consolidate access to serial devices with a single interface. Ideal for a small data center/computer room with a limited number of racks and servers. A typical environment would include 1-10 racks with 8-10 servers and network equipment (routers, switches) within each rack. Using a Linux-based operating system, the Cyclades CS console servers provide performance and secure access. A command line interface (Linux Shell) increases manageability.



BENEFITS

- Linux operating system
- Securely access any serial device
- Separate authentication to access ports and the console server
- Consolidate all serial port access via a single interface
- Access devices via the local serial port (in-band) or remotely using TCP/IP or dial-up (out-of-band)
- Simplify access and control of any serial computing device from any location
- Event notification (email, pager, SNMP trap)
- Sun break-safe (Solaris Ready™ certified)
- Unlimited number of simultaneous sessions
- Offline data buffering - local or remote (NFS/Syslog)
- Flash-upgrade firmware for fast and easy updates
- CAT 5 compatible adapters simplify cabling
- A configuration wizard for first-time users eases installation

The Cyclades CS console servers let you consolidate access to serial devices such as servers, routers, switches and serial power units with a single interface.



What problems does this product solve?

The Cyclades CS console servers provide consolidated support for all the serial target devices an IT administrator will need to access in the SMB data center/ computer room.

What types of devices are supported by the Cyclades CS console servers?

Examples include servers (UNIX, Linux and Solaris), routers, switches, public branch exchange (PBX), telecommunications equipment (DS/CSU) and serial power management devices.

What access methods do the Cyclades CS console servers support?

Local, remote via a TCP/IP network and dial up via an external modem

Do the Cyclades CS console servers feature power management?

Command line control of serial-based power management devices is supported.

Do the Cyclades CS console servers have a Linux-based operating system?

Yes.

What type of operating system is supported by the Cyclades CS console servers?

A Linux-based operating system. The Cyclades CS console servers include a command line interface (Linux Shell) that increases manageability.

How do you access serial devices with the Cyclades CS console servers?

Management over an IP network via an on-board Web interface, at the rack through the local console port, or dial-up with an external modem.

How can dial-up access be accomplished?

Via an external modem connected to the console server.

What are the types of authentication supported by the Cyclades CS console servers?

Local, RADIUS, TACACS+, Active Directory and LDAP authentication.

How does this solution support system management?

The Cyclades CS console server provides a configuration wizard for first-time users, command line interface (Linux Shell), Web Management Interface (HTTP/HTTPS) and SNMP to simplify system administration.

What type of cabling does this solution use?

CAT 5 compatible adapters for simpler cabling (sold separately).

I have purchased the Cyclades CS console server. How do I get upgrades?

Upgrades are available on the Avocent FTP site at no charge, via flash upgrade or TFTP support for network boot.

MANUFACTURER PART NUMBER	MODEL	DESCRIPTION
CCS4008-001	Cyclades CS 8-port	Cyclades 8-Port Console Server, AC Power
CCS4016-001	Cyclades CS 16-port	Cyclades 16-Port Console Server, AC Power



www.avocent.com/contacts

Avocent, the Avocent logo, The Power of Being There and Cyclades are registered trademarks of Avocent Corporation or its affiliates. All other marks are the property of their respective owners. Copyright © 2007 Avocent Corporation. All rights reserved.

1007-CycCS-SMB-AB-EN

Free Manuals Download Website

<http://myh66.com>

<http://usermanuals.us>

<http://www.somanuals.com>

<http://www.4manuals.cc>

<http://www.manual-lib.com>

<http://www.404manual.com>

<http://www.luxmanual.com>

<http://aubethermostatmanual.com>

Golf course search by state

<http://golfingnear.com>

Email search by domain

<http://emailbydomain.com>

Auto manuals search

<http://auto.somanuals.com>

TV manuals search

<http://tv.somanuals.com>