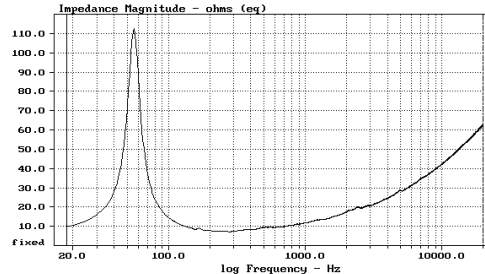
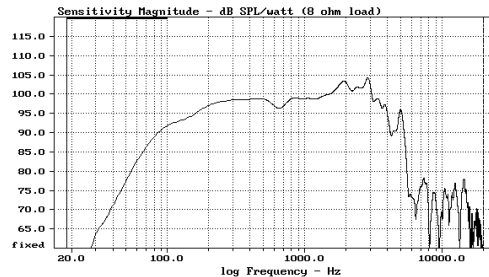


# 320 AMX

## Woofers

Woofers, 2.5" voice coil, 300 watts power handling, particularly indicated for compact multi-way systems



### Specifications

Nominal diameter	12" (320 mm.)
Nominal impedance	8 ohms
Pe (max)	200 watts R.M.S
Power Handling <sup>1</sup>	300 w. cont. program
Sensitivity (1W/1m) <sup>2</sup>	98.5 dB.
Frequency range	54 - 2500 Hz.
Voice coil diameter	65 mm.
winding material	copper
former material	kapton
winding depth	10 mm.
Magnetic gap depth	7 mm.
Magnet diameter	155 mm.
Flux density	1.2 T

Also available in 4 ohms, data upon request

### Thiele & Small Parameters

Fs	54 Hz.
Re	5.6 ohms
Qes	0.329
Qms	7.4
Qts	0.315
Vas	81 dm. <sup>3</sup>
Sd	522 cm. <sup>2</sup>
η <sub>0</sub>	3.8 %
X max	± 2 mm.
Mms	40.6 gr.
Bl	15.3 Tm
Le	0.9 mH

### Mounting Informations

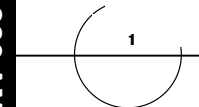
Overall diameter	316 mm.
Bolt circle diameter	296 mm.
Baffle cutout diameter	282 mm.
Depth	128 mm.
Net weight	5.6 Kg.

<sup>1</sup> AES standard

<sup>2</sup> Pink noise 100 to 2000 Hz.



320 AMX  
Woofers



## Free Manuals Download Website

<http://myh66.com>

<http://usermanuals.us>

<http://www.somanuals.com>

<http://www.4manuals.cc>

<http://www.manual-lib.com>

<http://www.404manual.com>

<http://www.luxmanual.com>

<http://aubethermostatmanual.com>

Golf course search by state

<http://golfingnear.com>

Email search by domain

<http://emailbydomain.com>

Auto manuals search

<http://auto.somanuals.com>

TV manuals search

<http://tv.somanuals.com>