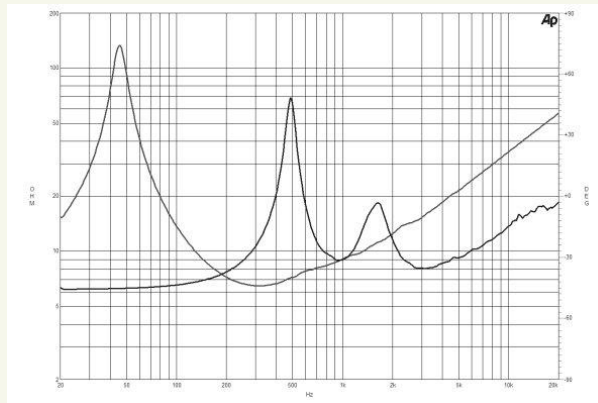
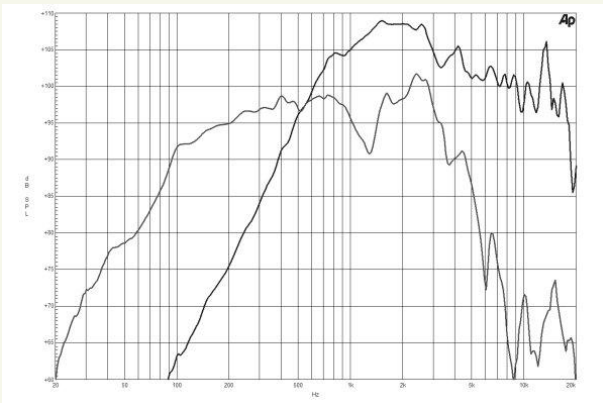




12CXN76 | Coaxials

700 W continuous program power capacity
 80° nominal coverage
 45 – 18000 Hz response
 99 dB sensitivity
 Single Neodymium magnet assembly



Specifications

Nominal Diameter	320 mm (12 in)
Nominal Impedance	8 ohm
Minimum Impedance	6.5 ohm (LF)
	8.0 ohm (HF)
Frequency Range	45 - 18000 Hz
Dispersion Angle (1)	80°
LF Unit	
Sensitivity (1W/1m) (2)	99 dB
Nominal Power Handling (3)	350 W
Continuous Power Handling (4)	700 W
Voice Coil Diameter	76 mm (3 in)
Winding Material	Copper
HF Unit	
Sensitivity (1W/1m) (5)	105 dB
Nominal Power Handling (6)	80 W
Continuous Power Handling (7)	160 W
Voice Coil Diameter	75 mm (3 in)
Winding Material	Aluminium
Diaphragm Material	Polyester/Titanium
Recom. Crossover (8)	1.2 kHz

Parameters

Fs	42 Hz
Re	5.0 ohm
Qes	0.20
Qms	8.0
Qts	0.19
Vas	120 dm ³ (4.2 ft ³)
Sd	522 cm ² (80.9 in ²)
Eta Zero	4.1 %
Xmax	+/- 4 mm
Xvar	+/- 6 mm
Mms	47 g
Bl	17.6 Txm
Le	0.8 mH

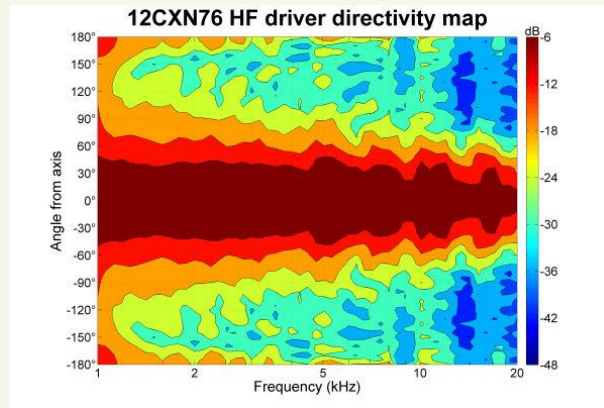
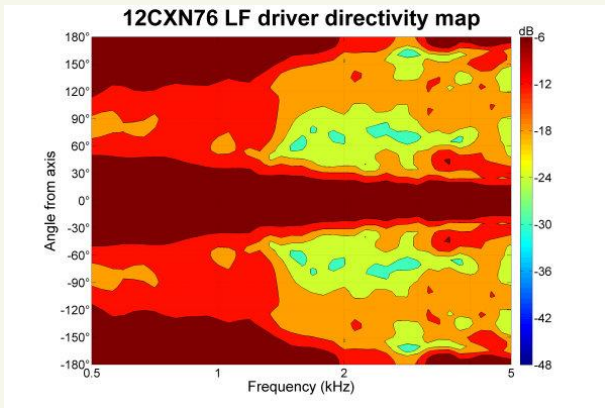
Mounting and Shipping Info

Overall Diameter	315 mm (12.4 in)
Bolt Circle Diameter	298 mm (11.7 in)
Baffle Cutout Diameter	282 mm (11.1 in)
Depth	168 mm (6.6 in)
Flange and Gasket Thickness	14 mm (0.55 in)
Net Weight	5.0 kg (11.0 lb)
Shipping Weight	5.9 kg (13.0 lb)
Shipping Box	380x380x240 mm (15x15x9.4 in)

¹Included by -6 dB down points, averaged from 1 kHz to 8 kHz



LF Drivers | LF Nd Drivers | Coaxials | HF Drivers | Horns



- ² Applied RMS Voltage is set to 2.83V for 8 ohms Nominal Impedance.
- ³ 2 hours test made with continuous pink noise signal (6 dB crest factor) within the specified range . Power calculated on rated minimum impedance. Loudspeaker in free air.
- ⁴ Power on Continuous Program is defined as 3 dB greater than the Nominal rating.
- ⁵ Applied RMS Voltage is set to 2.83V for 8 ohms Nominal Impedance.
- ⁶ 2 hours test made with continuous pink noise signal (6 dB crest factor) within the specified range . Power calculated on rated minimum impedance. Loudspeaker in free air.
- ⁷ Power on Continuous Program is defined as 3 dB greater than the Nominal rating.
- ⁸ 12 dB/oct. or higher slope high-pass filter.



Free Manuals Download Website

<http://myh66.com>

<http://usermanuals.us>

<http://www.somanuals.com>

<http://www.4manuals.cc>

<http://www.manual-lib.com>

<http://www.404manual.com>

<http://www.luxmanual.com>

<http://aubethermostatmanual.com>

Golf course search by state

<http://golfingnear.com>

Email search by domain

<http://emailbydomain.com>

Auto manuals search

<http://auto.somanuals.com>

TV manuals search

<http://tv.somanuals.com>