



**A new generation
of professional
handsaws**



A complete range of professional handsaws

- Widest range on the market
- Differentiated price segments
- Large choice of application saws
- Comprehensive end-user communication



Superior

Experience the Superior handsaw - a true achievement in craftsmanship! It will literally cut through anything made by wood and still be sharp after years of use. This is due to the Hard Point unique XT-toothing, the low friction coating, the extra thick blade for added stability and precision as well as the ergonomically designed handle.



ProfCut

Aimed at the professional user, the ProfCut and ProfCut+ handsaws have the new super sharp Hard Point GT-toothing. Choose the low friction coated ProfCut+ handsaw for easier sawing. There are also a wide variety of ProfCut application handsaws available for sawing in plywood, laminates, timber, plastics, plaster and concrete.



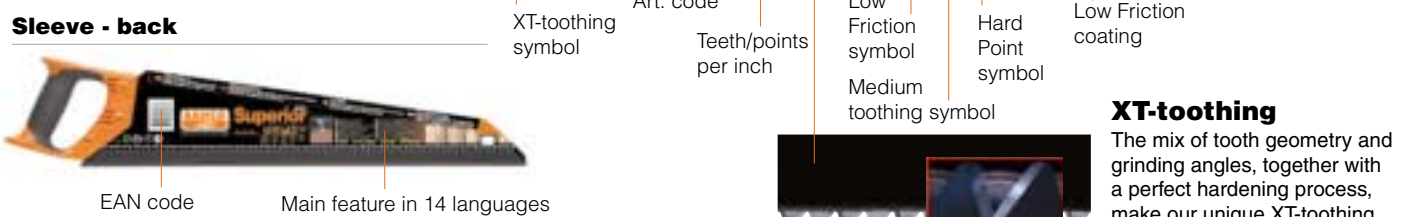
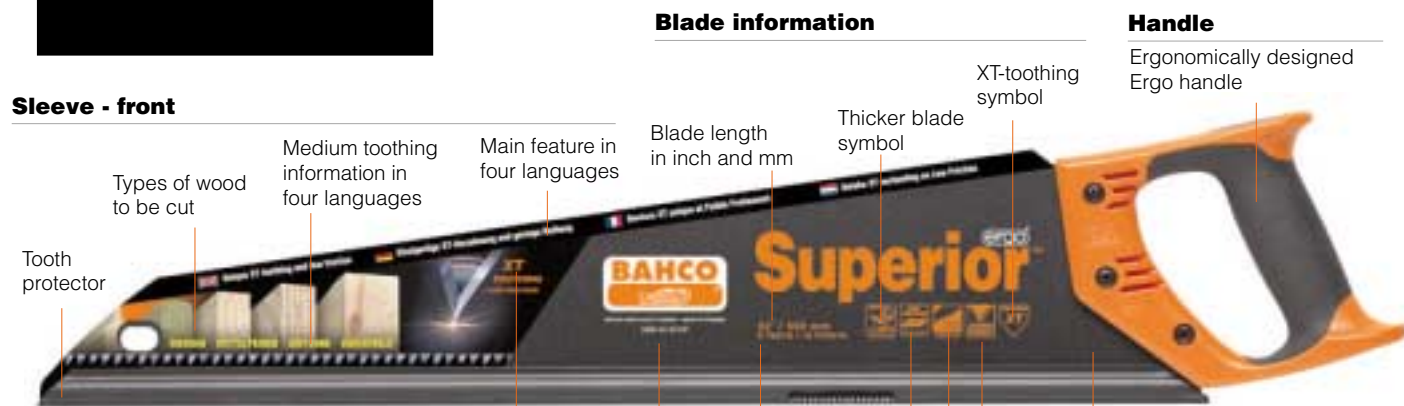
PrizeCut

PrizeCut is a robust and affordable handsaw with Hard Point UT-toothing for cutting all types of wood. The single component, solid handle is designed for long lasting use.

Superior

Simply Superior

- **Unique XT-toothing**
- **Low Friction coating**
- **Ergo Classification** ergo®
- **Thicker blade for stability and precision**



Superior



Saw for coarse cutting



COARSE 24"
24" / 600 mm
Art. Code: 2700-24-XT7-HP

COARSE 22"
22" / 550 mm
Art. Code: 2700-22-XT7-HP



Saw for medium cutting



MEDIUM 22"
22" / 550 mm
Art. Code: 2600-22-XT-HP

MEDIUM 19"
19" / 475 mm
Art. Code: 2600-19-XT-HP

Toolbox saw



Toolbox saw for fine cutting



FINE 16"
16" / 400 mm
Art. Code: 2600-16-XT11-HP

Laminate saw



LAMINATOR 20"
20" / 500 mm
Art. Code: SUP-20-LAM

Small saws



TENON 14"
14" / 350 mm
Art. Code: 3180-14-XT11-HP



VENEER 14"
14" / 350 mm
Art. Code: 3240-14-XT11-HP



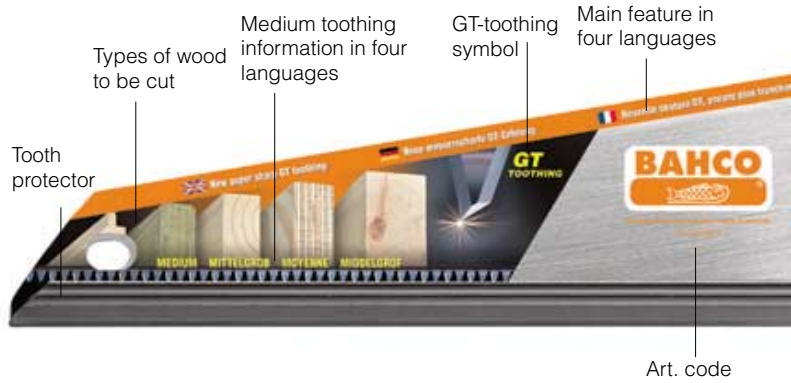
COMPASS 12"
12" / 300 mm
Art. Code: 3150-12-XT9-HP

ProfCut

For professional results

- New super sharp GT-toothing
- Low Friction coated ProfCut+
- New comfortable two-component handle
- Unique special application saws

Sleeve - front



Sleeve - back



BASE ASSORTMENT

ProfCut+



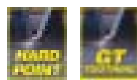
Saw for medium cutting



Saw for fine cutting



ProfCut



Saw for medium cutting



Saw for fine cutting



Toolbox saw



Toolbox saw for fine cutting



Small saws



GT-toothing

Our NEW supersharp GT-toothing is specifically developed for high cutting performance. The 3-sided ground tooth form ensures excellent results in all types of wood.

MEDIUM 22"

22" / 550 mm
Art. Code: PCP-22-GT7

MEDIUM 19"

19" / 475 mm
Art. Code: PCP-19-GT7

FINE 22"

22" / 550 mm
Art. Code: PCP-22-GT9

FINE 19"

19" / 475 mm
Art. Code: PCP-19-GT9

MEDIUM 22"

22" / 550 mm
Art. Code: PC-22-GT7

MEDIUM 19"

19" / 475 mm
Art. Code: PC-19-GT7

FINE 22"

22" / 550 mm
Art. Code: PC-22-GT9

FINE 19"

19" / 475 mm
Art. Code: PC-19-GT9

FINE 15"

15" / 400 mm
Art. Code: PC-15-TBX

TENON 12"

12" / 300 mm
Art. Code: PC-12-TEN

VENEER 12"

12" / 300 mm
Art. Code: PC-12-VEN

COMPASS 12"

12" / 300 mm
Art. Code: PC-12-COM

SPECIAL APPLICATION SAWS

Laminate saw



LAMINATOR 20"
20" / 500 mm
Art. Code: PC-20-LAM

Precision saw



PRECISION 20"
20" / 500 mm
Art. Code: PC-20-PRC

Timber saw



TIMBER 24"
24" / 600 mm
Art. Code: PC-24-TIM

Plaster saw



PLASTER 24"
24" / 600 mm
Art. Code: PC-24-PLS

General purpose saw



GENERAL PURPOSE 15"
15" / 380 mm
Art. Code: PC-15-GNP

Polystyrene, foam saw



DECOR 16"
16" / 400 mm
Art. Code: PC-16-DECO

Concrete saws



30"
30" / 750 mm
30 CARBIDE TIPS
Art. Code: 255

30"
30" / 750 mm
15 CARBIDE TIPS
Art. Code: 255-15/29

Light concrete saw



26"
26" / 650 mm
NON-CARBIDE
Art. Code: 256-26

Blade information

Blade length in inch and mm

Medium toothing symbol

GT-toothing symbol

Teeth/points per inch

Handle

Comfortable two-component handle

Hard Point symbol

ProfCut : Rust protection laquered
ProfCut+: Low Friction coated (orange coloured)

Fileable saws



Fileable saw for medium cutting

MEDIUM 24"
24" / 600 mm
Art. Code: PC-24-FILE-U7

MEDIUM 22"
22" / 550 mm
Art. Code: PC-22-FILE-U7

MEDIUM 19"
19" / 475 mm
Art. Code: PC-19-FILE-U7

MEDIUM 16"
16" / 400 mm
Art. Code: PC-16-FILE-U7

Dovetail saws



DOVETAIL 10"
10" / 250 mm
WOOD AND PLASTIC, DOVETAIL RIGHT.
Art. Code: PC-10-DTR



DOVETAIL 10"
10" / 250 mm
WOOD AND PLASTIC, DOVETAIL LEFT.
Art. Code: PC-10-DTL

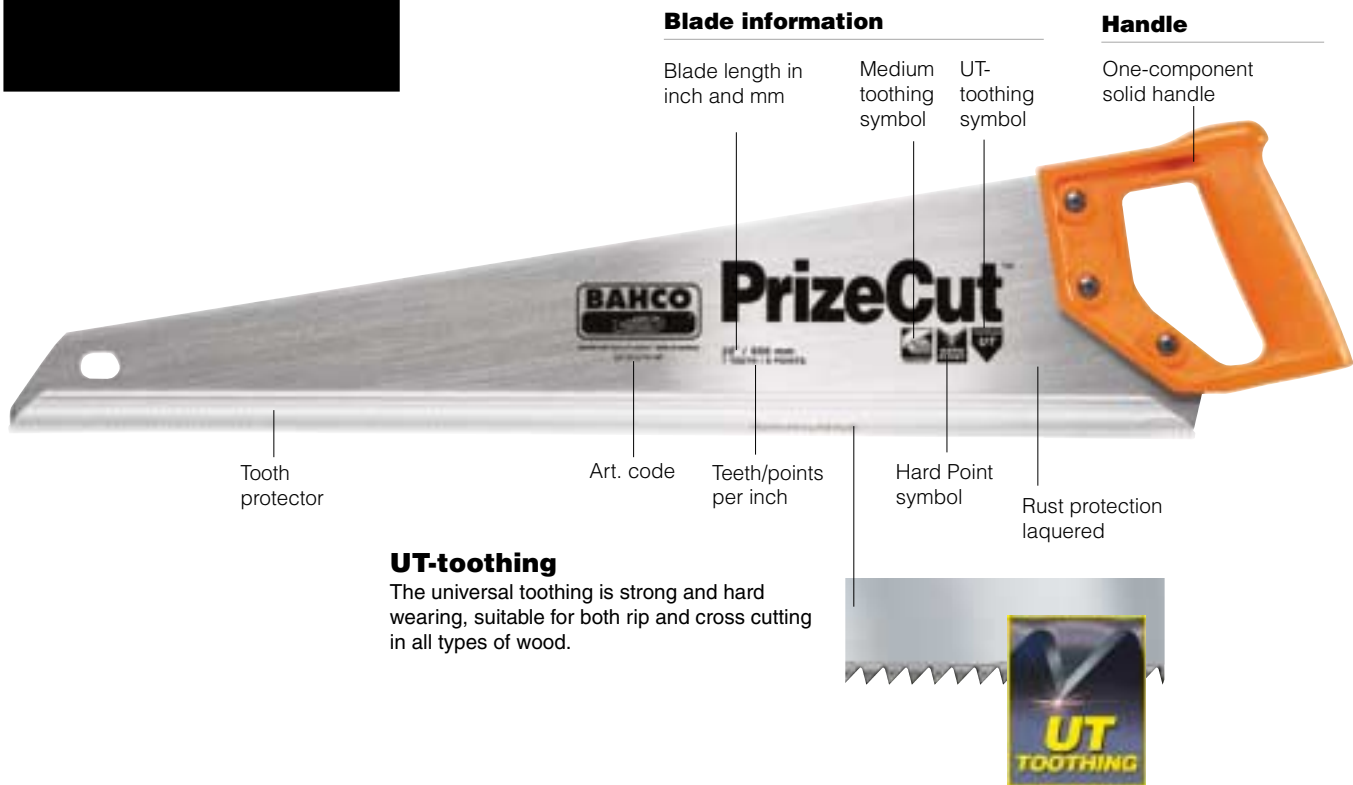


DOVETAIL 10"
10" / 250 mm
WOOD AND PLASTIC, DOVETAIL FLEX.
Art. Code: PC-10-DTF

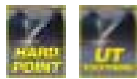
PrizeCut

Value with an edge

- **Universal tothing for all types of wood**
- **Hard Point for longer life**



PrizeCut



UNIVERSAL 22"
22" / 550 mm
Art. Code: NP-22-U7/8-HP

UNIVERSAL 19"
19" / 475 mm
Art. Code: NP-19-U7/8-HP

UNIVERSAL 16"
16" / 400 mm
Art. Code: NP-16-U7/8-HP

Small saws



TENON 12"
12" / 300 mm
Art. Code: NP-12-TEN



VENEER 12"
12" / 300 mm
Art. Code: NP-12-VEN



COMPASS 12"
12" / 300 mm
Art. Code: NP-12-COM

General purpose saw



FINE 14"
14" / 360 mm
Art. Code: 300-14-F15/16-HP

Concrete saws



25"
25" / 620 mm
34 CARBIDE TIPS
Art. Code: NP-CONC

25"
25" / 620 mm
17 CARBIDE TIPS
Art. Code: NP-CONC-17/34

Selection Table

There are a few things to consider when selecting the right saw for the job. The following steps and the table below will help you to choose. Then complete the selection with other saw features you prefer.

Contact us if you need more information!

Step 1. Select saw model: Superior, ProfCut or PrizeCut.

Step 2. Select saw according to column 1 – Type of saw/material.

Step 3. Select saw according to application – see column 5 and column 6 (Length).

- Precision work: Use fine cut saws with small teeth from 9/10 to 15/16 teeth/points per inch. The length of the saw makes little difference.

- General work: Use medium cut saws with medium size teeth from 7/8 to 9/10 teeth/points per inch. The length should be 18-22 inches for vigorous, thrusting strokes.

- Rough work: Use coarse cut saws with large teeth with 7/8 teeth/points per inch. The length should be 22-26 inches for long, vigorous strokes.

Superior

| GENERAL | | | BLADE | | | | | HANDLE | |
|----------------------|-----------------|---------------|----------|--------------------------------|--------------|--------------|----------------------|--------------------|-------------------|
| Type of saw/material | Art. code | EAN-code | Pack Qty | Application | Length in/mm | Toothing/TPI | Low friction coating | Thickness of blade | Type |
| COARSE | 2700-24-XT7-HP | 7311518191665 | 4 | Timber, wet wood and tanalised | 24/600 | XT/7 | Yes | 1.03 mm | Ergo, 2 component |
| COARSE | 2700-22-XT7-HP | 7311518191672 | 4 | Timber, wet wood and tanalised | 22/550 | XT/7 | Yes | 1.03 mm | Ergo, 2 component |
| MEDIUM | 2600-22-XT-HP | 7311518160777 | 4 | Medium cutting | 22/550 | XT/9 | Yes | 1.03 mm | Ergo, 2 component |
| MEDIUM | 2600-19-XT-HP | 7311518160760 | 4 | Medium cutting | 19/475 | XT/9 | Yes | 1.03 mm | Ergo, 2 component |
| Toolbox saw | | | | | | | | | |
| FINE | 2600-16-XT11-HP | 7311518239527 | 4 | Toolbox | 16/400 | XT/11 | Yes | 1.03 mm | Ergo, 2 component |
| Laminat saw | | | | | | | | | |
| LAMINATOR | SUP-20-LAM | 7311518258351 | 4 | Laminate and wooden floors | 20/500 | XT/11 | Yes | 0.93 mm | Ergo, 2 component |
| Small saws | | | | | | | | | |
| TENON | 3180-14-XT11-HP | 7311518181390 | 4 | Tenon saw | 14/360 | XT/11 | Yes | 0.75 mm | Ergo, 2 component |
| VENEER | 3240-14-XT11-HP | 7311518243005 | 4 | Veneer saw | 14/360 | XT/11 | Yes | 0.75 mm | Ergo, 2 component |
| COMPASS | 3150-12-XT9-HP | 7311518181406 | 4 | Compass saw | 12/300 | XT/9 | Yes | 1.03 mm | Ergo, 2 component |

ProfCut

| GENERAL | | | BLADE | | | | | HANDLE | |
|---------------------------------|---------------|---------------|----------|----------------------------|--------------|-----------------|----------------------|--------------------|-------------|
| Type of saw/material | Art. code | EAN-code | Pack Qty | Application | Length in/mm | Toothing/TPI | Low friction coating | Thickness of blade | Type |
| ProfCut+ base assortment | | | | | | | | | |
| MEDIUM | PCP-22-GT7 | 7311518263331 | 4 | Medium cutting | 22/550 | GT/7 | Yes | 0.83 mm | 2 component |
| MEDIUM | PCP-19-GT7 | 7311518263317 | 4 | Medium cutting | 19/475 | GT/7 | Yes | 0.83 mm | 2 component |
| FINE | PCP-22-GT9 | 7311518263348 | 4 | Fine cutting | 22/550 | GT/9 | Yes | 0.83 mm | 2 component |
| FINE | PCP-19-GT9 | 7311518263324 | 4 | Fine cutting | 19/475 | GT/9 | Yes | 0.83 mm | 2 component |
| ProfCut base assortment | | | | | | | | | |
| MEDIUM | PC-22-GT7 | 7311518263393 | 4 | Medium cutting | 22/550 | GT/7 | No | 0.83 mm | 2 component |
| MEDIUM | PC-19-GT7 | 7311518263362 | 4 | Medium cutting | 19/475 | GT/7 | No | 0.83 mm | 2 component |
| FINE | PC-22-GT9 | 7311518263409 | 4 | Fine cutting | 22/550 | GT/9 | No | 0.83 mm | 2 component |
| FINE | PC-19-GT9 | 7311518263379 | 4 | Fine cutting | 19/475 | GT/9 | No | 0.83 mm | 2 component |
| Toolbox saw | | | | | | | | | |
| FINE | PC-15-TBX | 7311518263423 | 4 | Fine cutting/Toolbox | 15/380 | GT/11 | No | 0.75 mm | 2 component |
| Small saws | | | | | | | | | |
| TENON | PC-12-TEN | 7311518263447 | 4 | Tenon saw | 12/300 | UT/11 | No | 0.75 mm | 2 component |
| VENEER | PC-12-VEN | 7311518263430 | 4 | Veneer saw | 12/300 | UT/11 | No | 0.75 mm | 2 component |
| COMPASS | PC-12-COM | 7311518263454 | 4 | Compass saw | 12/300 | XT/9 | No | 1.03 mm | 2 component |
| Fileable saws | | | | | | | | | |
| MEDIUM | PC-16-FILE-U7 | 7311518263461 | 4 | Medium cutting/Fileable | 16/400 | UT/7 Fileable | No | 0.83 mm | 2 component |
| MEDIUM | PC-19-FILE-U7 | 7311518263478 | 4 | Medium cutting/Fileable | 19/475 | UT/7 Fileable | No | 0.83 mm | 2 component |
| MEDIUM | PC-22-FILE-U7 | 7311518263485 | 4 | Medium cutting/Fileable | 22/550 | UT/7 Fileable | No | 0.83 mm | 2 component |
| MEDIUM | PC-24-FILE-U7 | 7311518263492 | 4 | Medium cutting/Fileable | 24/600 | UT/7 Fileable | No | 0.83 mm | 2 component |
| Dove tail saws | | | | | | | | | |
| DOVE TAIL | PC-10-DTR | 7311518263546 | 10 | Dovetail right | 10/250 | UT/13 | No | 0.50 mm | Wood |
| DOVE TAIL | PC-10-DTL | 7311518263553 | 10 | Dovetail left | 10/250 | UT/13 | No | 0.50 mm | Wood |
| DOVE TAIL | PC-10-DTF | 7311518263560 | 10 | Dovetail flex | 10/250 | FT/15 | No | 0.50 mm | Wood |
| Special application saws | | | | | | | | | |
| Laminat saw | | | | | | | | | |
| LAMINATOR | PC-20-LAM | 7311518258290 | 4 | Laminate and wooden floors | 20/500 | XT/11 | No | 0.93 mm | 2 component |
| Precision saw | | | | | | | | | |
| PRECISION | PC-20-PRC | 7311518264291 | 4 | Mitre/Precision/Fine | 20/500 | UT/9 | No | 0.93 mm | 2 component |
| Timber saw | | | | | | | | | |
| TIMBER | PC-24-TIM | 7311518263515 | 4 | Coarse cutting/Fileable | 24/600 | FT/3.5 Fileable | No | 0.93 mm | 2 component |
| Plaster saw | | | | | | | | | |
| PLASTER | PC-24-PLS | 7311518263508 | 4 | Plaster | 24/600 | GT/7 | No | 0.93 mm | 2 component |
| General purpose saw | | | | | | | | | |
| GEN. PURPOSE | PC-15-GNP | 7311518264307 | 4 | General purpose | 15/380 | FT/15 | No | 0.75 mm | 2 component |
| Polystyrene, foam saw | | | | | | | | | |
| DECOR | PC-16-DECO | 7311518264987 | 4 | Polystyrene, foam saw | 16/400 | Special | No | 0.75 mm | 2 component |
| Concrete saws | | | | | | | | | |
| | 255 | 7311518007843 | 1 | Concrete/Carbide tip | 30/750 | 30 Carbide tips | No | 1.6 mm | 2 component |
| | 255-15/29 | 7311518007850 | 1 | Concrete/Carbide tip | 30/750 | 15 Carbide tips | No | 1.6 mm | 2 component |
| Light Concrete saw | | | | | | | | | |
| | 256-26 | 7311518000080 | 4 | Light weight concrete | 26/650 | Non-Carbide | No | 1.15 mm | 2 component |

PrizeCut

| GENERAL | | | BLADE | | | | | HANDLE | |
|----------------------------|------------------|---------------|----------|----------------------|--------------|-----------------|----------------------|--------------------|-------------|
| Type of saw/material | Art. code | EAN-code | Pack Qty | Application | Length in/mm | Toothing/TPI | Low friction coating | Thickness of blade | Type |
| UNIVERSAL | NP-22-U7/8-HP | 7311518034399 | 10 | Universal | 22/550 | UT/7 | No | 0.83 mm | 1 component |
| UNIVERSAL | NP-19-U7/8-HP | 7311518241452 | 10 | Universal | 19/475 | UT/7 | No | 0.83 mm | 1 component |
| UNIVERSAL | NP-16-U7/8-HP | 7311518241773 | 4 | Universal | 16/400 | UT/7 | No | 0.83 mm | 1 component |
| Small saws | | | | | | | | | |
| TENON | NP-12-TEN | 7311518263959 | 10 | Tenon saw | 12/300 | UT/13 | No | 0.75 mm | 1 component |
| VENEER | NP-12-VEN | 7311518264260 | 4 | Veneer saw | 12/300 | UT/13 | No | 0.75 mm | 1 component |
| COMPASS | NP-12-COM | 7311518264277 | 4 | Compass saw | 12/300 | UT/7 | No | 1.20 mm | 1 component |
| General purpose saw | | | | | | | | | |
| FINE | 300-14-F15/16-HP | 7311518005955 | 4 | General purpose | 14/360 | FT/15 | No | 0.75 mm | 1 component |
| Concrete saws | | | | | | | | | |
| | NP-CONC | 7311518264918 | 4 | Concrete/Carbide tip | 25/620 | 34 Carbide tips | No | 2.00 mm | Wood |
| | NP-CONC-17/34 | 7311518264925 | 4 | Concrete/Carbide tip | 25/620 | 17 Carbide tips | No | 2.00 mm | Wood |

The unique saw supplier since 1886

Bahco has been a leading producer and supplier of handsaws since 1886. Our in-house Research & Development and test lab, together with our 11-point ergonomic development programme, ensure products of the highest quality.

The widest handsaw range on the market covers all applications to meet end-users' every need. Sensitive to distributor demands Bahco offers three handsaw families for three different price segments.

We are introducing a brand new communication system showing both application and features on both blade and packaging. Effective pictures, symbols and text quickly deliver the message. The colourful and aggressive design creates the maximum in-store impact.



www.bahco.com

Free Manuals Download Website

<http://myh66.com>

<http://usermanuals.us>

<http://www.somanuals.com>

<http://www.4manuals.cc>

<http://www.manual-lib.com>

<http://www.404manual.com>

<http://www.luxmanual.com>

<http://aubethermostatmanual.com>

Golf course search by state

<http://golfingnear.com>

Email search by domain

<http://emailbydomain.com>

Auto manuals search

<http://auto.somanuals.com>

TV manuals search

<http://tv.somanuals.com>