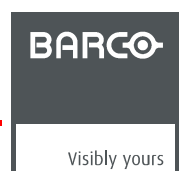


# Backup Agent Plug-in

## Installation Manual

Theater Management Suite

R59770810/00  
06/11/2012



**Barco nv Entertainment Division**  
Noordlaan 5, B-8520 Kuurne  
Phone: +32 56.36.82.11  
Fax: +32 56.36.883.86  
Support: [www.barco.com/esupport](http://www.barco.com/esupport)  
Visit us at the web: [www.barco.com](http://www.barco.com)

Printed in Belgium

# 1. BACKUP AGENT PLUG-IN INSTALLATION

## About Backup Agent

"Backup Agent" is a windows service that performs scheduled backup of all data managed on a TMS server in order to be able to restore this data in case of problem (server swap, failure). This service starts when the operating system is booted and run in the background as long as the operating system is running. A user interface allows an authorized technician to perform operations such as making a backup (unprogrammed), restore a configuration, or modify "Backup Agent" service settings.

## About the Plug-in

This plug-in is a set of software components that adds specific abilities to the TMS software. Although it is an independent software, this plug-in only has interest when it is installed with a "Plaza Catcher" equipped with "TMS software" application.

## About this manual

This manual describes the procedure and conditions for the installation of the "Backup Agent" service Plug-in.

## Overview

- Required configuration
- Plan your Plug-in Installation
- Installation process overview
- Plug-in installation provided by the integrator
- Plug-in installation from USB media
- Setting of "Backup Agent" service
- Launch the first backup

## 1.1 Required configuration

---

### Requirements

This plug-in can only be installed on a Plaza Catcher and its version must be the same as the TMS Software. Installing this plug-in on any other platform or using a non adapted version will not work.

## 1.2 Plan your Plug-in Installation

---

### Intervention time required

30 minutes.

### Impact on the theater organization

Installing the plug-in and performing the "system backup" of your server may take several minutes, it is important to carefully plan this operation. During installation, the TMS server is no longer operational. You must ensure that the SMS have what they need to operate without the TMS, specifically that they have all the necessary content for the planned playbacks.

## 1.3 Installation process overview

---

### Two methods available

There are two methods to install the "Backup Agent" plug-in. Either the installation package is remotely pushed on the server by the integrator, or the installation package can be placed at the root of one USB media.



**Make sure you have a single update source. If other update sources are present on the server (other USB media, CD or remote repository directory) the automatic installation process will stop and a message requesting the deletion of concurrent updates will appear.**

---

### Procedure overview

1. Perform the plug-in installation by choosing one of two possible deployment methods:
  - Perform the installation provided by the integrator. See "Plug-in installation provided by the integrator", page 2 .
  - Perform the installation from USB media. See "Plug-in installation from USB media", page 2 .
2. Perform the "Backup Agent" setting. See "Setting of "Backup Agent" service", page 3 .
3. Launch the first backup.



**It is possible that the plug-in "Backup Agent" is distributed in the same package as the TMS application (Upgrade 5.6.3 and higher). In this case, the step 1 shouldn't be performed. You must directly perform the parameters setting and the initial backup (step 2 and 3).**

---

### Particular case of the Update

It is possible to install the plug-in on a server where an earlier version of "Backup Agent" has already been deployed. In this case, the previous configuration is kept in place. It is not necessary to perform the configuration steps but it is recommended to launch the manual backups (step 3).

## 1.4 Plug-in installation provided by the integrator

---



**This method requires that the server is connected to the internet. The integrator must be able to send the necessary files to install the plug-in before starting the procedure.**

---

### How to perform the installation provided by the integrator.

1. Make sure with your integrator that the installation package was remotely pushed on the server..
2. Press the exit button in the TMS application.
3. When the Logout panel appears, push on the "Update" button. The button is active when an update is available on the machine.  
**Note:** *If the "update" button is not active, it means that the installation files are not yet present on the server. You must restart the complete procedure once the files are transferred. Check with your integrator*
4. The TMS application stops.
5. The installation procedure runs automatically. This installation may take several minutes.
6. After the installation, the server and the TMS application restart automatically. If this is not the case, restart the server manually by pressing the "reset" button on the front panel.  
**Note:** *The installation file and its security key file are automatically removed from the usual update folder.*

## 1.5 Plug-in installation from USB media

---

### Necessary part

- USB media with the plug-in installation file and its security key file in root directory. Any other locations on the USB media will not be detected by the server. The USB media is not supplied by Barco.

### How to perform the installation from USB media

1. Connect a USB media with the plug-in installation file and its security key file to the server.
2. Wait a few seconds and press the exit button in the TMS application.
3. When the Logout panel appears, push on the "Update" button. The button is active when an update is available on the machine.  
**Note:** *If the "update" button is not active, it means that the installation files are not present on the USB media or the USB media is not correctly connected to the server. You must restart the complete procedure once the installation files are correctly placed on a well connected USB media.*
4. The TMS application stops.
5. The installation procedure runs automatically. This installation may take several minutes.
6. After the installation, the server and the TMS application restart automatically. If this is not the case, restart the server manually by pressing the "reset" button on the front panel.
7. Disconnect the USB media to not interfere with any other future update.

## 1.6 Setting of "Backup Agent" service

### What has to be done?

The setting of the "Backup agent" service consists in setting the parameters for FTP backup and validate a backup scheduling.

### Workflow

1. Shutdown the server with the normal procedure.
2. Press the power button on the front panel and keep down the "Shift" key on the keyboard during the server startup.
3. It takes a few minutes for the server to finish its startup phase (starting the operating system, verification of hard disks, applications launching) and the XP login window is displayed.
4. Use a "support" login and its associated password to log in a administrative Windows account (access to start button is needed). Contact your technical support if you don't have this information.
5. Click on Start Menu> Programs> Applications> Barco TMS-100> Backup Agent.
6. This will start the "Backup Agent" user interface.

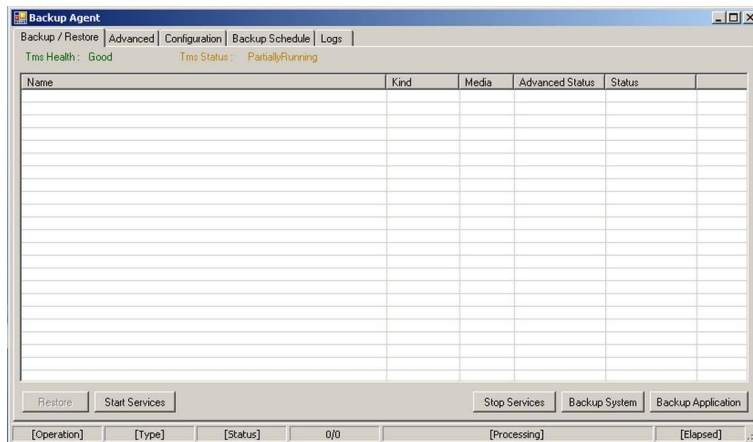


Image 1-1

7. Select the "Configuration" tab.

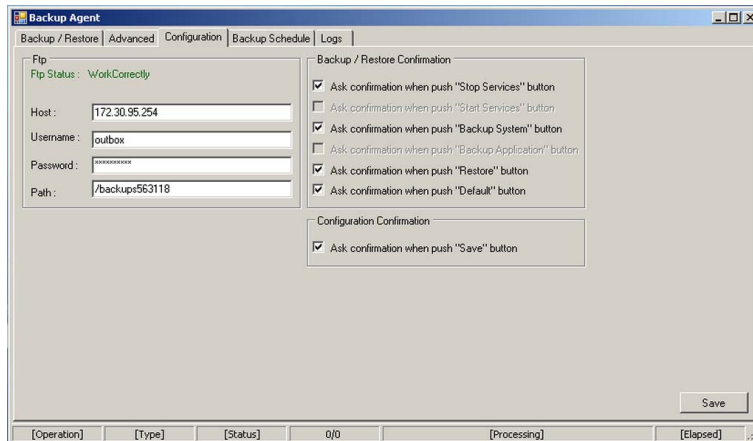


Image 1-2

8. Configure FTP settings that will allow to the application to do the backups on the FTP server of your choice:
  - Host: IP address of the FTP server where you want to store the backup file.
  - Username: User name of the FTP server.
  - Password: Password of the FTP server.
  - Path: FTP virtual path where you want to store the backup file.

In this panel, you can also change some minor behavior of the application. For further details see the appendix at the end of the document. See "Details of the Configuration tab", page 7 .

9. Push on "Save" button. After a few minutes the communication is established with the FTP server: "FTP Status" becomes "WorkCorrectly".
10. Select the "Backup Schedule" tab.

## 1. Backup Agent Plug-in Installation

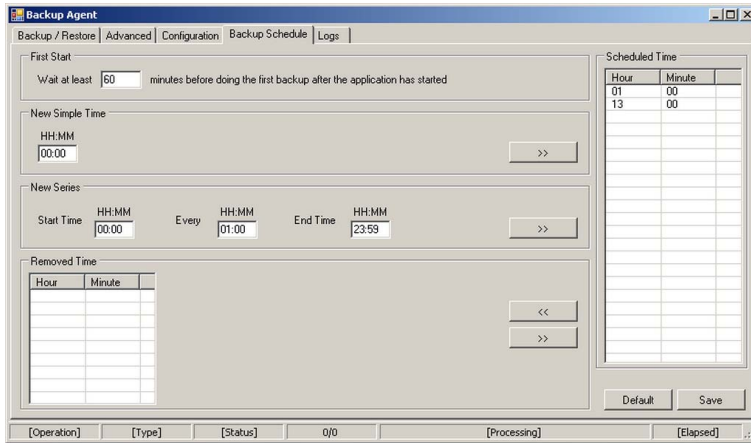


Image 1-3

11. You can keep or change automatic backup scheduling. For further details see the appendix at the end of the document, "Details of the Backup Schedule tab", page 7 .

Two automatic backup are provided by default: the first at 1am and the second at 1pm.

12. Push on "Save" button if you have made changes.

## 1.7 Launch the first backup

### What has to be done?

The backup of system parameters and system databases (Backup system) cannot be done when the application runs. You must perform this backup manually when you install the "Backup Agent".

It is also recommended to do a backup of the TMS application parameters (Backup application).

### Workflow

1. Select the "Backup/Restore" tab.

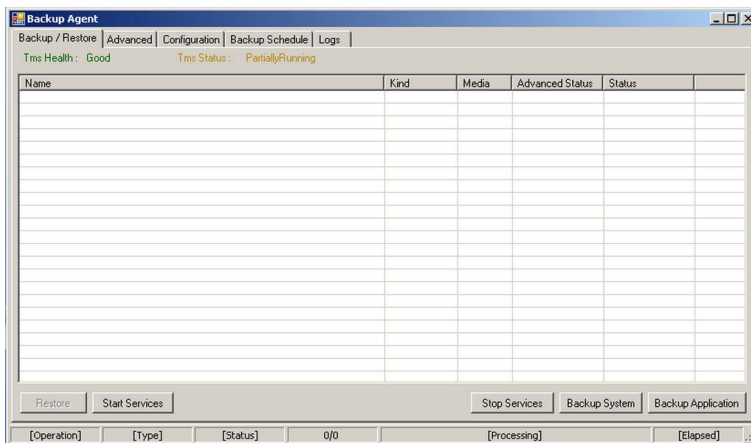


Image 1-4

2. Push on the "Backup System" button.

3. A confirmation is required to ensure that the user really wants to stop the application.

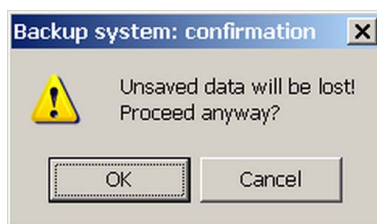


Image 1-5

**Note:** This message is display to remind that quitting the application in this way can result in loss of data that have not been explicitly saved with the application interface.

4. Press "OK".
5. It takes a few minutes for the "Backup agent" to realize the following steps:
  - Check the system integrity.
  - Stop applications and services that access the system data bases.
  - Compress and copy system files in the backup directories (Local and FTP).

You can check the progress of these stages with the status bar situated at the bottom of the interface of the Backup agent.

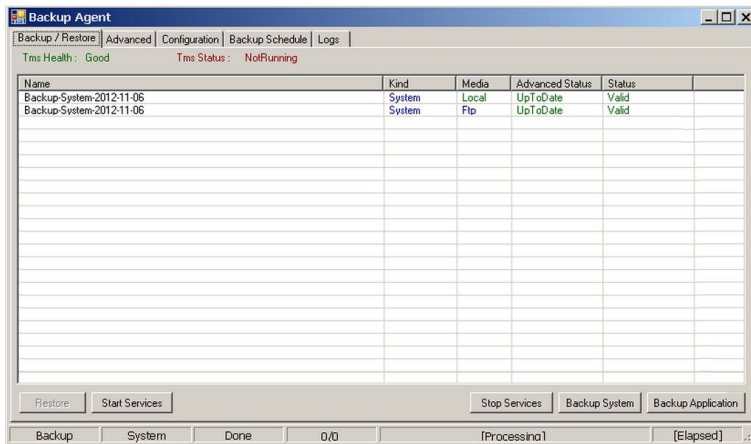


Image 1-6

6. Push on the "Backup Application" button.
7. It takes a few minutes for the "Backup agent" to perform the compression and the copy of the application files in the backup directories (Local and FTP).

You can check the progress of these stages with the status bar situated at the bottom of the interface of the Backup agent.

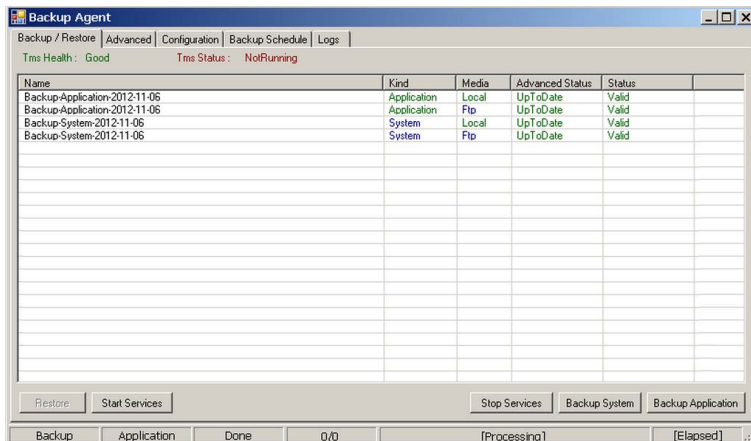


Image 1-7





## 2. ANNEXES

### Overview

- Details of the Configuration tab
- Details of the Backup Schedule tab

### 2.1 Details of the Configuration tab

#### Configuration panel

The "configuration" panel is used to set the FTP server parameters and change some minor behavior of the user interface.

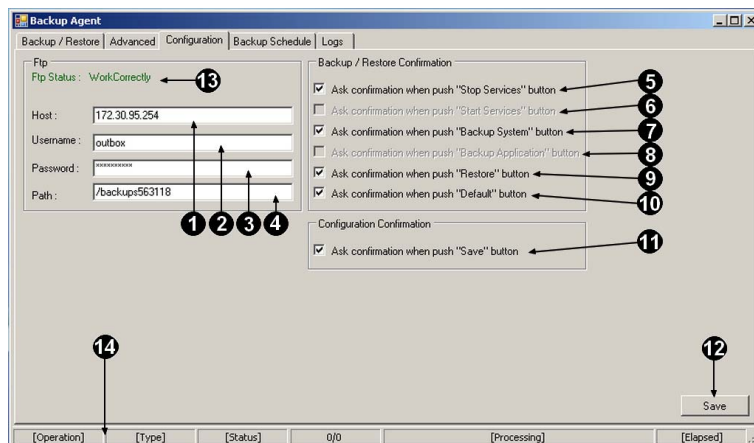


Image 2-1

#### Fields and buttons description

1. Host: IP address of the FTP server where you want to store the backup file.
2. Username: User name of the FTP server.
3. Password: Password of the FTP server.
4. Path: FTP virtual path where you want to store the backup file.
5. Enables/disables the confirmation popup after the push on the button named "Stop Services" (Backup/Restore panel).
6. Enables/disables the confirmation popup after the push on the button named "Start Services" (Backup/Restore panel).
7. Enables/disables the confirmation popup after the push on the button named "Backup System" (Backup/Restore panel).
8. Enables/disables the confirmation popup after the push on the button named "Backup Application" (Backup/Restore panel).
9. Enables/disables the confirmation popup after the push on the button named "Restore" (Backup/Restore panel).
10. Enables/disables the confirmation popup after the push on the button named "Default" (Backup schedule panel).
11. Enables/disables the confirmation popup after the push on the button named "Save" (All panels with "Save" button).
12. "Save" button: Used to save configuration modifications on this panel.
13. FTP Status: Give the current status of the FTP server connection (Dontwork, CheckInProgress, WorkCorrectly).
14. Status bar: Give the status of the current operation. In the case of this panel the status bar show the status of the save operation when you push on the "Save" button.

### 2.2 Details of the Backup Schedule tab

#### Backup schedule panel

The "Backup schedule" panel is used to fix the schedule of the "Application backup" during a day of exploitation of the server. Two automatic backups are provided by default: the first at 1am and the second at 1pm.

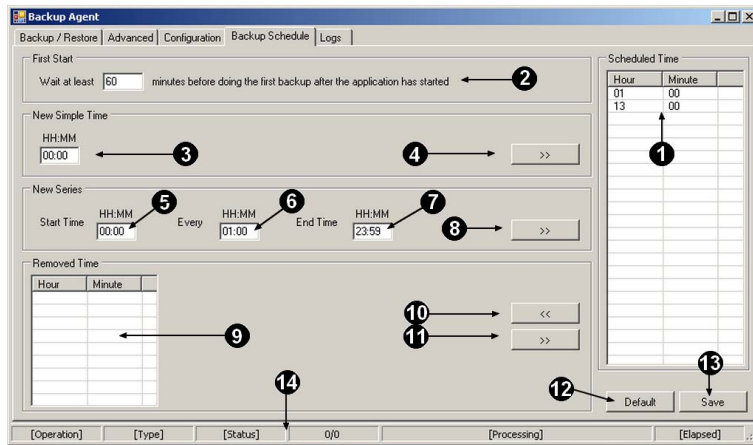


Image 2-2

### Fields and buttons description

1. Ordered list of programed backup times.
2. Time after the start of the application for which the backup is prohibited. A backup scheduled in that time will not be executed.
3. Use this field to indicate a new scheduled backup (HH24:MM).
4. Push on this button to add the new scheduled backup in the ordered list of programed backup.
5. Use this field to indicate a start time of a range of new scheduled backups (HH24:MM).
6. Use this field to indicate a frequency of backup in a range of new scheduled backups (HH24:MM)
7. Use this field to indicate an end time of a range of new scheduled backups (HH24:MM).
8. Push on this button to add the new scheduled backups in the ordered list of programed backup. The new backups will be created automatically based on the rules given in the fields "Start time", "End time" and "Every".
9. Ordered list of backup that has been removed from the main list of programed backup.
10. Push on this button to move "programed backup" from the main list of programed backup to the "removed list" of backup. You can select one or more backups.
11. Push on this button to move "programed backup" from the "removed list" to the main list of programed backup. You can select one or more backups.
12. Push on this button to reload and save default parameters. The two automatic default backups will be displayed in the main ordered list of programed backup, and a delay of 60 minutes after the launch of the application for the first backup will be imposed.
13. "Save" button: Used to save schedule modifications on this panel.
14. Status bar: Give the status of the current operation. In the case of this panel the status bar show the status of the save operation when you push on the "Save" button.

## Free Manuals Download Website

<http://myh66.com>

<http://usermanuals.us>

<http://www.somanuals.com>

<http://www.4manuals.cc>

<http://www.manual-lib.com>

<http://www.404manual.com>

<http://www.luxmanual.com>

<http://aubethermostatmanual.com>

Golf course search by state

<http://golfingnear.com>

Email search by domain

<http://emailbydomain.com>

Auto manuals search

<http://auto.somanuals.com>

TV manuals search

<http://tv.somanuals.com>