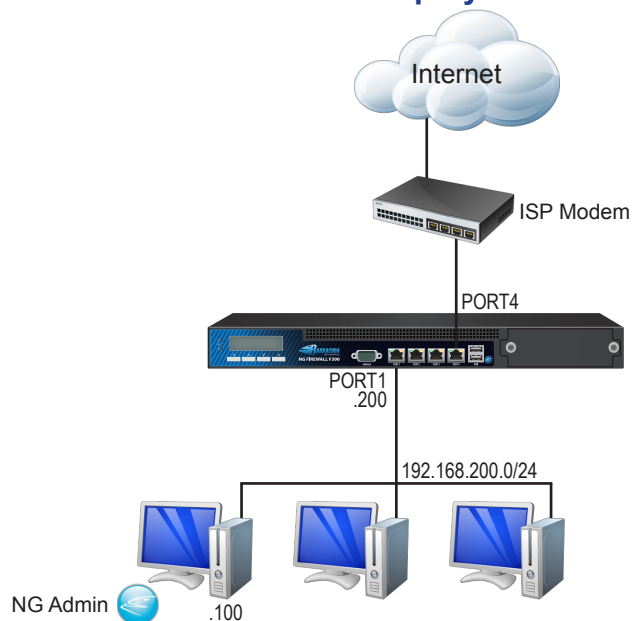


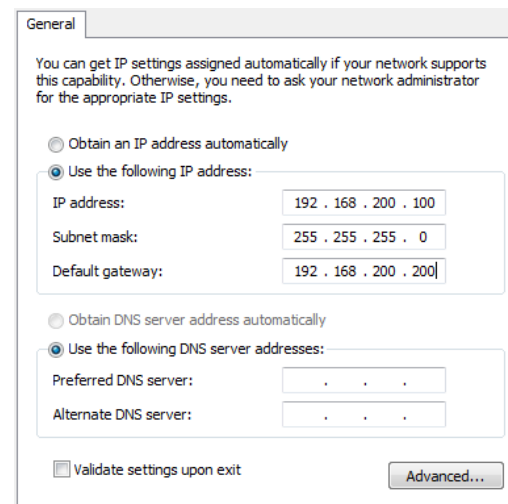
This Quick Start Guide will help you with the initial configuration of your Barracuda NG Firewall. It shows how to connect to your Barracuda NG Firewall, connect an Internet Service Provider, how to configure the firewall rule set to get a connection to the Internet, install your licenses and activate the unit.

1. Network Deployment



3. Network Configuration

Since every Barracuda NG Firewall is shipped with a default network configuration it is necessary to configure your personal computer accordingly. Launch the network adapter configuration dialog of your MS Windows operating system and modify the IPv4 configuration.



2. Physical Connection

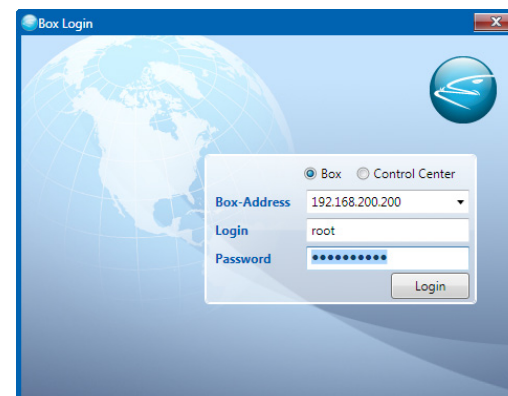
- Connect an AC power cord to the Barracuda NG Firewall.
Note: Immediately after connecting the power cord to the Barracuda NG Firewall (F10/ F10x/F20x), the appliance starts booting and loads the operating system.
- Either use the crossover network cable (red) to directly connect to the management port of the appliance or use the standard network cable (grey) and connect to the same network switch as the Barracuda NG Firewall.

The table below lists the default port configuration for certain appliance types. Models F10 to F30x have a pre configured WAN port to connect your ISP. Models F400 to F900 need to be configured manually.

| Model | Management Port | WAN Port |
|-------------|-------------------------|----------|
| F10 | PORT1 | PORT4 |
| F100 / F101 | PORT1 | PORT4 |
| F200 / F201 | PORT1 | PORT4 |
| F300 / F301 | PORT1 | PORT4 |
| F400 | PORT1 | |
| F600 | PORT1 | |
| F800 | 1st port of left module | |
| F900 | MGMT | |

4. Connect

Launch the NG Admin application located on the USB Thumb Drive shipped with your Barracuda NG Firewall. This application is used to manage your Barracuda NG Firewall. Select **Box**, enter the default management IP address, the default user credentials, and click **Login**.



| Management IP Address | Login | Password |
|-----------------------|-------|------------|
| 192.168.200.200 | root | ngf1r3wall |

5. Change Default Password

To avoid unauthorized use, Barracuda Networks recommends that you change the default root password to a more secure password.

- Go to **Config** > **System**.
- Within the **Root Password** section, enter the old (ngf1r3wall) and afterwards the new root password with at least 5 characters.
- Click **Send Changes** followed by **Activate**.

Note:

Even if the root password is changed as described here, if the appliance does not have a valid license, the default root password will still be valid for root login. Please see instructions below for how to install a valid license.

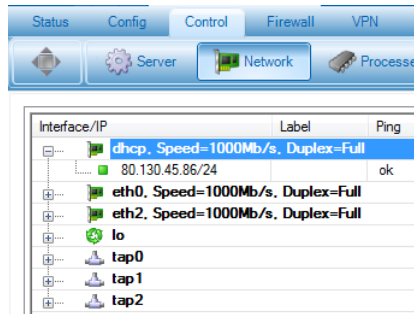
6. Connect ISP

Appliance models **F10** to **F30x** use **PORT4** for the ISP by default.

If your ISP assigns the WAN IP address through the DHCP protocol, simply connect the modem to **PORT4**. This port is pre configured to be used with an ISP using DHCP.

For all other models the network port can be chosen individually and the settings for ISP configuration must be done manually:

- Navigate to: **Config** > **Network** > **xDSL/ISDN/DHCP**.
- Enable one of the available WAN connection types and configure it according to the settings provided by your Internet Service Provider.
- To check if the WAN IP address assignment was successful, navigate to **Control** > **Network**.



7. Firewall Rule Set Configuration

By default the Barracuda NG Firewall blocks all connections from and to the Internet.

To enable Internet access for the trusted LAN, the default firewall rules need to be enabled and reordered properly.

- Navigate to **Config** > **(Simple Config)** > **Ruleset**
- Use drag&drop and move the **BLOCKALL** rule to the bottom of the list.
- Double click the **LAN-2-Internet** rule and un-check the **Deactivate Rule** checkbox.
- Click **Send Changes** followed by **Activate**.

8. Product Activation

The Barracuda NG Admin application automatically obtains and installs your licenses from Barracuda Networks. For this procedure, the Barracuda NG Admin application needs to have a connection to the internet.

This process automatically starts, as soon as you login to your Barracuda NG Firewall. You will be guided through the activation process and need to fill out a customer information form.

The current license and activation state is displayed on the **Status** page.

9. Change Management IP & Network

After the initial configuration, it may be necessary to change to management IP address and the management network of your Barracuda NG Firewall, to be integrated into an existing network environment.

- Navigate to: **Config** > **Network** > **Networks**.
- Change the **Management IP (MIP)** to the desired IP address within the existing network.
- Set the **Associated Netmask**.
- Click **Send Changes** followed by **Activate**.

Changing network settings, require an explicit activation within the network subsystem.

- Navigate to: **Control** > **Box** > **Network**.
- Click **Activate new network configuration** and select **Force** as activation mode.

After a few moments you will be able to connect to the new management IP address. Do not forget to change the network configuration of your personal computer.

10. Package Contents

| Contents | F10 | F10x | F20x | F30x | F400 | F600 | F800 | F900 |
|--------------------------------|-----|------|------|------|------|------|------|------|
| Security Appliance | ✓ | ✓ | ✓ | ✓ | ✓ | ✓ | ✓ | ✓ |
| Power Cord | ✓ | ✓ | ✓ | ✓ | ✓ | ✓ | ✓ | ✓ |
| External Power Supply | ✓ | ✓ | ✓ | - | - | - | - | - |
| Ethernet Crossover Cable (red) | ✓ | ✓ | ✓ | ✓ | ✓ | ✓ | ✓ | ✓ |
| Ethernet Standard Cable (grey) | ✓ | ✓ | ✓ | ✓ | ✓ | ✓ | ✓ | ✓ |
| Serial Cable (console) | ✓ | ✓ | ✓ | ✓ | ✓ | ✓ | ✓ | ✓ |
| USB Thumb Drive | ✓ | ✓ | ✓ | ✓ | ✓ | ✓ | ✓ | ✓ |
| WiFi Antenna | - | ✓* | ✓* | ✓* | - | - | - | - |
| Rack Mount Brackets | - | - | - | ✓ | ✓ | ✓ | ✓ | ✓ |
| Rack Mount Rail Kit | - | - | - | - | ✓ | ✓ | ✓ | ✓ |

* F101/F201 and F301 only

- For additional information and product documentation, visit: www.barracudanetworks.com/doc

Contact and Copyright Information

Barracuda Networks, Inc. 3175 S. Winchester Blvd, Campbell, CA 95008 USA • phone: 408.342.5400 • fax: 408.342.1061 • www.barracuda.com Copyright 2004-2011© Barracuda Networks, Inc. All rights reserved. Use of this product and this manual is subject to license. Information in this document is subject to change without notice. Barracuda NG Firewall is a trademark of Barracuda Networks, Inc. All other brand and product names mentioned in this document are registered trademarks or trademarks of their respective holders. v5.2.0-260411-02-250711

Free Manuals Download Website

<http://myh66.com>

<http://usermanuals.us>

<http://www.somanuals.com>

<http://www.4manuals.cc>

<http://www.manual-lib.com>

<http://www.404manual.com>

<http://www.luxmanual.com>

<http://aubethermostatmanual.com>

Golf course search by state

<http://golfingnear.com>

Email search by domain

<http://emailbydomain.com>

Auto manuals search

<http://auto.somanuals.com>

TV manuals search

<http://tv.somanuals.com>