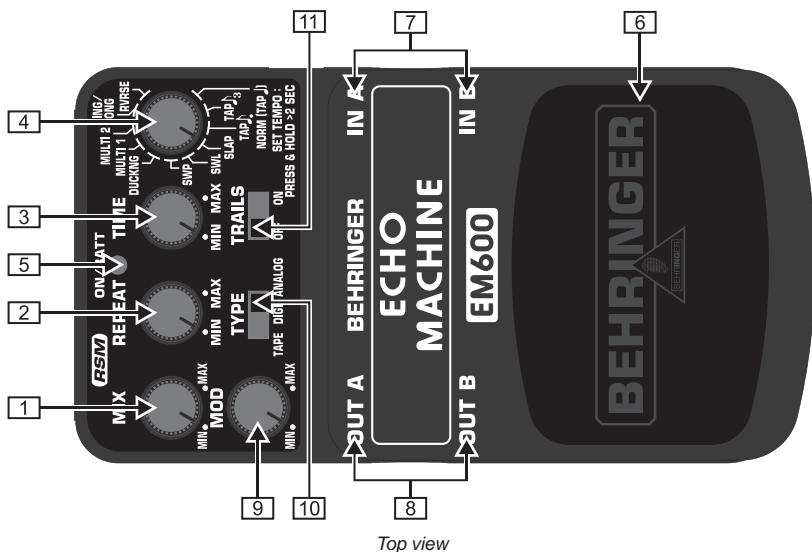


ECHO MACHINE EM600



Thank you for showing your confidence in us by purchasing the BEHRINGER ECHO MACHINE EM600. This ultimate stereo Echo Modeler delivers the whole range of analog, tape and digital delay effects. Create any sound from vintage tape-based echo over warm analog BBD delay sound to clean high-fidelity digital delay.

1. CONTROLS



Top view


- 1 The *MIX* knob is used for setting the level of the delays.
- 2 The *REPEAT* knob determines the number of delays.
- 3 The *TIME* control adjusts the delay time. The length of time depends on the selected program. The delay time indicates how fast the signal repetitions will follow after the original signal. Low settings allow to use the unit as a chorus or flanger. Alternatively, you can tap the tempo with the footswitch. Turning the control overrides tap tempo settings.
- 4 With the *MODE* knob, you can select one of several delay modes:

Tap J	Tap J ₂	Tap J ₃	Slap	Swell	Sweep	Ducking	Multi 1	Multi 2	Ping Pong	Reverse
Tapping produces quarter note echoes	Tapping produces 8th note triplet echoes	Tapping produces dotted 8th note echoes	Fast Slap back echo with very short delay times	Echoes with auto volume swell	Echoes with sweeping filter feedback	Reduced echoes following playing volume	Multiple delay tap rhythm	Multiple delay tap rhythm	Taps alternating from left to right	Reversed signal delay


- 5 The *ON/BATT* LED illuminates when the effect is activated. It also serves as a battery level indicator.
- 6 Use the footswitch to activate/deactivate the effect. If you depress the pedal for more than two seconds, you are able to enter a tempo by tapping the pedal several times in time with the music. Depressing the pedal again for more than two seconds quits the tempo input mode.
- 7 The 1/4" TS connectors (*IN A/IN B*) connect to your instrument. Use *IN A* for mono applications and both *IN A* and *IN B* if you have a stereo signal source, such as another effects unit.
- 8 The two 1/4" TS connectors *OUT A* and *OUT B* send the signals to your amp. Use both connectors if you want to achieve a full stereo delay effect. For mono use simply plug in *OUT A*.
- 9 With the *MOD* knob, you can add a nice modulation effect to your delays (*TYPE* switch position: *ANALOG*=Vibrato; *DIGI*=Chorus; *TAPE*=Wow and flutter).
- 10 The *TYPE* switch allows you to choose from different classic delay characteristics, ranging from *TAPE* (delays with subtle high-frequency damping), *DIGI* (high-quality delays) to *ANALOG* (dark and slightly distorted delays).
- 11 With the *TRAILS* switch, you can prevent delays from being cropped when bypassing the effect.

Use the *DC IN* connection at the front of the unit to plug in a 9 V power supply (not included).

The *BATTERY COMPARTMENT* is located underneath the pedal cover. To install or replace the 9 V battery (not included), press the hinges with a ballpoint pen and remove the pedal cover. Be careful not to scratch the unit.

 The EM600 has no On/Off switch. It is operable as soon as you insert a plug into one of the IN connectors. Disconnect the plug, if you don't use the EM600. In doing so, you can extend the life time of the battery.

The SERIAL NUMBER is located at the underside.

 In rare cases interferences of the normal function may appear by external influence (e.g. electrostatic discharge), as for example sound disturbances or malfunctions. If this occurs, please turn down the volume on subsequent amplifiers and disconnect the input connector briefly to restart the application.

2. WARRANTY

For our current warranty terms, please refer to our website at <http://www.behringer.com>.

3. SPECIFICATIONS

IN A / IN B

Connector	1/4" TS
Impedance	500 kΩ

OUT A / OUT B

Connector	1/4" TS
Impedance	1 kΩ

Power supply 9 V⁻⁻⁻, 100 mA regulated

BEHRINGER PSU-B

USA/Canada	120 V~, 60 Hz
China/Korea	220 V~, 50/60 Hz
Europe/U.K./Australia	230 V~, 50 Hz
Japan	100 V~, 50 - 60 Hz
Export model	120/230 V~, 50 - 60 Hz

Power connector 2 mm DC jack, negative center

Battery 9 V type 6LR61

Power consumption 60 mA

Dimensions (H x W x D) approx. 54 mm (2 1/8") x 70 mm (2 3/4") x 123 mm (4 4/5")

Weight approx. 0.33 kg (0.73 lbs)

BEHRINGER is constantly striving to maintain the highest professional standards. As a result of these efforts, modifications may be made from time to time to existing products without prior notice. Specifications and appearance may therefore differ from those listed or shown.

4. SAFETY INSTRUCTIONS

Do not use near water, or install near heat sources. Use only authorized attachments/accessories. Do not service product yourself. Contact our qualified servicing personnel for servicing or repairs, **especially when power supply cord or plug is damaged.**

No utilizar cerca de agua o instalar cerca de fuentes de calor. Utilice sólo accesorios y aditamentos autorizados. No intenté reparar el producto usted mismo. Contacte a nuestro personal técnico cualificado para servicio y reparaciones, **especialmente cuando la fuente o el cable de alimentación estén dañados.**

Не эксплуатируйте прибор вблизи от источников воды и тепла. Применяйте только авторизованные дополнительные устройства. Никогда не ремонтируйте прибор самостоятельно. Ремонт может производить только квалифицированный специализированный персонал, **особенно при повреждениях сетевого провода или сетевой вилки.**

水分の近くや、ヒーターなど熱気のある場所では使用しないでください。正式に認可された付属品のみを使用してください。製品はご自分では決して修理せず、特に電源コードもしくはプラグが損傷した場合には、必ず製品サービスおよびリペアの資格を有した当社の担当員にご相談ください。

不要在靠近水源的地方使用，或在靠近热源的地方安装。只使用经过许可的附件 / 配件。不要自己进行产品维修，**尤其是当电源线或插座损坏的时候**，请联系我们的专业服务人员有关产品维修事宜。

Die deutsche Anleitung ist erhältlich @ www.behringer.com

Manuel francophone en téléchargement sur www.behringer.com

Manual en español disponible en www.behringer.com

Manuali italiani disponibili @ www.behringer.com

Русскоязычное руководство @ www.behringer.com

Polska instrukcja dostępna jest pod adresem @ www.behringer.com

Nederlandse handleiding beschikbaar @ www.behringer.com

Suomenkielinen käyttöohje saatavilla osoitteesta www.behringer.com

Svensk manual finns tillgänglig på www.behringer.com

Dansk vejledning findes på @ www.behringer.com

Manual português disponível @ www.behringer.com

Ελληνικό εγχειρίδιο υπάρχει διαθέσιμο στη διεύθυνση www.behringer.com

日本語版マニュアル @ www.behringer.com

使用说明书可在 www.behringer.com 下载

Technical specifications and appearance are subject to change without notice. The information contained herein is correct at the time of printing. BEHRINGER accepts no liability for any loss which may be suffered by any person who relies either wholly or in part upon any description, photograph or statement contained herein. Colors and specifications may vary slightly from product. Products are sold through our authorized dealers only. Distributors and dealers are not agents of BEHRINGER and have absolutely no authority to bind BEHRINGER by any express or implied undertaking or representation. No part of this manual may be reproduced or transmitted in any form or by any means, electronic or mechanical, including photocopying and recording of any kind, for any purpose, without the express written permission of BEHRINGER International GmbH. ALL RIGHTS RESERVED. © 2007 BEHRINGER International GmbH. BEHRINGER International GmbH, Hanns-Martin-Str. 101, D-76189 Heilbronn, Germany. www.behringer.com All Manuals Search And Download.

FEDERAL COMMUNICATIONS COMMISSION

COMPLIANCE INFORMATION



Responsible party name: **MUSIC Group Services USA, Inc.**

Address: **18912 North Creek Parkway,
Suite 200 Bothell, WA 98011,
USA**

Phone/Fax No.: **Phone: +1 425 672 0816
Fax: +1 425 673 7647**

ECHO MACHINE EM600

complies with the FCC rules as mentioned in the following paragraph:

This equipment has been tested and found to comply with the limits for a Class B digital device, pursuant to part 15 of the FCC Rules. These limits are designed to provide reasonable protection against harmful interference in a residential installation. This equipment generates, uses and can radiate radio frequency energy and, if not installed and used in accordance with the instructions, may cause harmful interference to radio communications. However, there is no guarantee that interference will not occur in a particular installation. If this equipment does cause harmful interference to radio or television reception, which can be determined by turning the equipment off and on, the user is encouraged to try to correct the interference by one or more of the following measures:

- Reorient or relocate the receiving antenna.
- Increase the separation between the equipment and receiver.
- Connect the equipment into an outlet on a circuit different from that to which the receiver is connected.
- Consult the dealer or an experienced radio/TV technician for help.

This device complies with Part 15 of the FCC rules. Operation is subject to the following two conditions:

- (1) this device may not cause harmful interference, and
- (2) this device must accept any interference received, including interference that may cause undesired operation.

Important information:

Changes or modifications to the equipment not expressly approved by MUSIC Group can void the user's authority to use the equipment.

Free Manuals Download Website

<http://myh66.com>

<http://usermanuals.us>

<http://www.somanuals.com>

<http://www.4manuals.cc>

<http://www.manual-lib.com>

<http://www.404manual.com>

<http://www.luxmanual.com>

<http://aubethermostatmanual.com>

Golf course search by state

<http://golfingnear.com>

Email search by domain

<http://emailbydomain.com>

Auto manuals search

<http://auto.somanuals.com>

TV manuals search

<http://tv.somanuals.com>