



BKS 1210  
BKS 1215  
BKS 1220

## Vacuum Cleaner

Instructions for Use

**BEKO**

## **Please read this manual first!**

Dear Customer,

We hope that your product which has been manufactured in modern facilities and passed through a strict quality control procedure will give you the best results.

Therefore, we advise you to read through this manual carefully before using your product and keep it for future reference.

### **This user manual will...**

... help you use your machine in a fast and safe way.

- Please read the User Manual before installing and starting your machine.
- Particularly follow the instructions related to safety.
- Keep this User Manual within easy reach. You may need it in the future.
- Please read all additional documents supplied with this machine.

Please note that this User Manual may be applicable for several other models. Differences between models will be identified in the manual.



This product has been produced in environmentally friendly, modern facilities



## CONTENTS

---

<b>1 Important Safety Instructions</b>	<b>2</b>
<b>2 Technical Specifications</b>	<b>3</b>
<b>3 Using Your Machine</b>	<b>4</b>
<b>4 Maintenance and Cleaning</b>	<b>5</b>

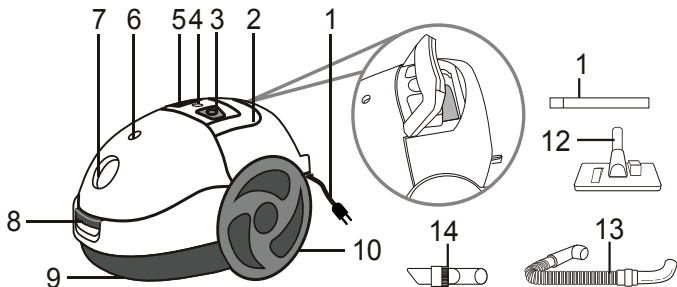
---

# 1 Important Safety Instructions

---

- For the first operation, please read the manual carefully before use the machine and keep it properly for future use.
- Before the first operation, make sure the dust bag and filter is installed properly.
- Make sure the local power supply corresponds to the rating label or instruction information.
- Do not vacuum water and inflammable material.
- Do not vacuum burning material and ashes.
- Do not use the cleaner without a motor protection filter, exhaust filter or dust bag.
- Clean the dust bag when it becomes full.
- If blockage is found in brush, hose or tubes, clean them before re-operated the machine.
- If the dust bag or filter is damaged, replaced a new one.
- Do not store or use the machine close to the high temperature places.
- Do not let the children use the machine.
- If abnormal noise, smell, smoke, or any other breakage are found during the operation, you should turn off the machine and unplug it. Then contact with your service center for repair. Do not repair by yourself.
- If the power cord, switch or motor is damaged, repair or replace them only by qualified persons.
- Do not run over the power cord to red mark.
- Do not immerse the vacuum cleaner to water for cleaning.
- This appliance is not intended for use by persons (including children) with reduced physical, sensory or mental capabilities, or lack of experience and knowledge, unless they have been given supervision or instruction concerning use of the appliance by a person responsible for their safety. Children should be supervised to ensure that they do not play with the appliance.

## 2 Technical Aspects Of Your Machine



- 1- Power Cord
- 2- Handle
- 3- Cord Rewinder Button
- 4- Speed Control Knob (Model BKS 1220 Only)
- 5- On /Off Switch Button (Model BKS 1210 and BKS 1215)
- 6- Dust Full Indicator
- 7- Hose Socket
- 8- Clip
- 9- Bottom
- 10- Big Wheel
- 11- Extension Tube (Metal Telescopic Tube For BKS 1215 only)
- 12- Floor Brush
- 13- Hose
- 14- Two In One Nozzle (Integrated Brush And Crevice Nozzle)

**Specifications:** 230 V~50 Hz Class II

**Power:** 1300W nominal 1500W max

Values stated on the markings of the product or in the printed documents accompanying the product are obtained in the laboratory on basis of the relevant standards. These values may change according to the usage and ambient conditions of the product. Power values are tested 240 V.

### 3 Using Your Machine

---

1. Connect the hose accessories: Press the adaptors at both side of the hose head ,then insert the hose into the hose socket.

2. Connect the tube to the curve end of hose.

3. Connect different nozzle tools to the tube for different cleaning purposes:

Floor brush for hard floor or carpet; integrated brush & crevice nozzle for wall surface, corner, sofa, curtain or space between furniture, etc.

4. Turn on the machine:

-Hold the plug and pull out the cord, then insert the plug into the power socket (make sure that main power voltage corresponds to the voltage shown on the rating label).

-Press the on/off switch button for operation, the machine could start working for the version without speed control. For the speed control version, adjust your power to require level for different cleaning function after the power is turned on.

5. Turn off the machine:

After using, press the on/off switch button again to turn off the machine, press the cord rewriter button to drawn in the power cord.

6. To move machine from room to room, unplug and carry it by using the carry handle.

Never use the power cord to move the machine.

**Warning:** must keep the machine on “ off “ position and unplug it when do not use the machine.

## 4 Maintenance and Cleaning

---

1. When the dust full indicator turns to red, it is time to clean the dust bag or replace a new bag. To do that, please follow the instruction :

(a) Open the front cover by pressing the clip;

(b) Take out the bag holder to remove the dust bag;

(c) For cloth bag ,you can pull out the clip bar in the bottom of the dust bag and remove the dust, then you can relocate the cloth bag for next time using.

-If the cloth bag is too dirty, use clear water to wash it. Air dry the cloth bag only.

-If the cloth beg is damaged, replace a new one.

(d) For paper bag, tip the rubbish out of the bag or throw the full bag away and replace a new one. Then put back the bag and holder into the vacuum cleaner in correct position.

(e) Close the front cover.

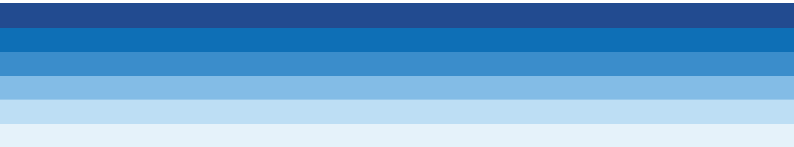
3. The exhaust filter ( post motor filter) should be cleaned twice a year: to do that, unclip the grill and shake the filter to clean the dust . Then relocate the filter and clip the grill. If the filter is damaged, replaced a new filter.

**WARNING:** Turn off and unplug the machine before any maintenance or Replacement.!

### NOTE:

1. The front cover can't be closed unless the dust bag is installed in right position.

2. The motor protection filter should be removed and rinsed by clear water (air dry only)twice a year or whenever it is visible clogged. If the filter is damaged, replaced a new filter.





## Free Manuals Download Website

<http://myh66.com>

<http://usermanuals.us>

<http://www.somanuals.com>

<http://www.4manuals.cc>

<http://www.manual-lib.com>

<http://www.404manual.com>

<http://www.luxmanual.com>

<http://aubethermostatmanual.com>

Golf course search by state

<http://golfingnear.com>

Email search by domain

<http://emailbydomain.com>

Auto manuals search

<http://auto.somanuals.com>

TV manuals search

<http://tv.somanuals.com>