



USB SCSI Adapter with Termpower



P73276

F5U015-TPW

Introduction and System Requirements

Thank you for purchasing the Belkin Components® USB-SCSI Adapter. Now, you can easily add up to 7 SCSI devices on your Windows® 98 PC, or Mac™ through USB port! No more opening your computer case, no more IRQ conflicts or driver problems! Simply plug it in!

Your PC must have:

- 486 processor or faster
- 16MB memory or more
- A free USB port (on the computer or at a hub)
- Windows® 98 or Windows® 98 SE

Your Macintosh® must have:

- OS 8.6 or higher
- A free USB port (on the computer or at a hub)

Notes:

1. It is NOT recommended that you plug in the USB-SCSI adapter to the USB ports on the iMac™ keyboard. The keyboard does not supply enough power, and is a low-speed device.
2. If you own a non-iMac™ machine and wish to add USB ports, please obtain a Belkin USB BusPort™ for Mac® (model # F5U005-Mac®)

Your SCSI device must be able to supply termination power to the USB SCSI Adapter. Some devices such as Iomega Zip® Drives and some brands of scanners will not be able to provide the required +5V termination power. In such an event, a SCSI device that can provide termination power must be connected to the device chain or you can use the power supply adapter supplied with the package.

If you are going to plug the USB-SCSI Adapter into a USB Hub, make sure that it is a self-powered hub.
(A self-powered hub has its own power supply.)

Package Contents

- Belkin Components® USB SCSI Adapter with Termpower
- CD containing both Windows® and Macintosh® drivers
- Power supply adapter (7.5VDC, 600mA) with DB25 adapter
- Registration card
- This manual

Macintosh® Installation and Usage

MACINTOSH® INSTALLATION:

1. Insert the Belkin USB to SCSI Adapter with Termpower CD into your CD-ROM drive. Double-click on the CD icon. You will see two folders: MAC® Driver and PC Driver. Double click on the "MAC® Driver" folder. Now, you will see two files named:
 - "Belkin USB-SCSI"
 - "Belkin USB-SCSI SIM"
2. Double click on your "Hard Drive" icon and look for "System Folder". Double click on "System Folder".
3. In "System Folder", look for another folder called "Extensions". Once you have located the "Extensions" folder, you will need to select the two files in the Belkin USB to SCSI CD (see #1 above), and drag the two files onto the "Extensions" folder. You will see your system copying both files over.

USAGE:

1. When copying is finished connect your SCSI device or device chain to the USB SCSI Adapter. See appendices for adapters and cables you may need. Make sure that the devices are powered up.

Plug in the USB SCSI Adapter to a free USB port on your computer, or USB Hub. Restart your computer. To do this click on "Special" at the top menu bar, and choose "Restart".
2. After restart, icons of your SCSI device(s) should appear on your desktop.

Macintosh® Installation and Usage (continued)

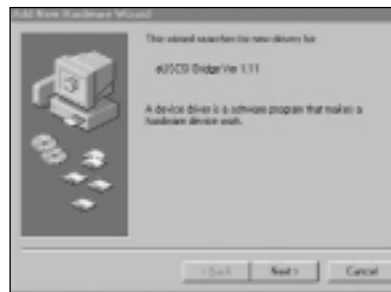
Note: If you unplug the USB SCSI Adapter from the computer, or the device(s) from the SCSI chain, the operating system may not recognize this and might think that the device(s) are still connected. In the event that the device(s) and/or the USB-SCSI Adapter is unplugged from the computer, and an application tries to access the device(s), your computer will hang. You must cycle power in order to recover your system.

Hence, to disconnect a device from the SCSI chain, always drag its icon to the TRASH first, then disconnect the USB SCSI Adapter or devices.

Windows® 98 Installation and Usage

WINDOWS® 98 INSTALLATION:

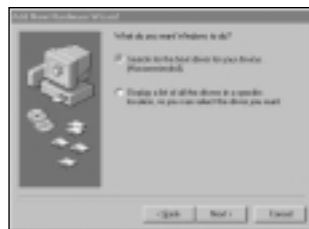
1. Connect your SCSI device or device chain to the USB SCSI Adapter. See appendices for adapters and cables you may need. Make sure that the device(s) are powered up.
2. Plug in the USB SCSI Adapter to a free USB port on your computer, or USB Hub. A "New Hardware Found..." dialog box will appear:



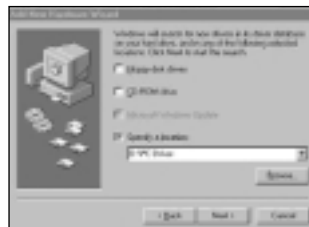
Click on NEXT.

Note: Even if the Adapter is plugged into your USB port (or Hub), it must first be plugged into a SCSI device that provides termination power, before Windows® will detect and enumerate the Adapter, and the SCSI device(s). If your SCSI device(s) does not provide termination power, make sure the power supply adapter that came with the package is connected.

Windows® 98 Installation and Usage (continued)

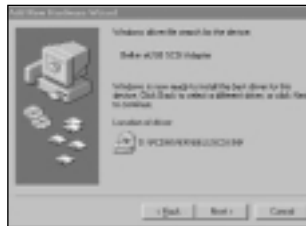


3. On the screen that appears select "Search for the best driver for your device (Recommended)", and then click Next.
4. Windows® will now prompt you for drivers. Insert the Belkin USB SCSI Adapter CD-ROM in your CD-ROM drive. Put a check mark at the box named "Specify a location:". Type D:\PC Driver. (In this example, D is the driver letter for the CD-ROM drive; it may be different on your computer, you may need to check it.) Click Next.



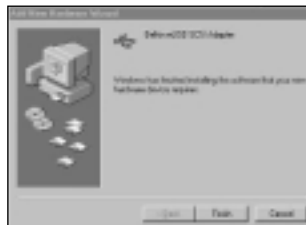
Windows® 98 Installation and Usage (continued)

- Windows® will automatically find and install the drivers from the CD-ROM, and display the next dialog box, confirming it has loaded the correct files:



Click on NEXT.

- Lastly, Windows® will display this final dialog box.



Click FINISH.

Windows® will then detect the "USB Mass Storage Class Adapter", and automatically install its drivers. There will be no more prompts.





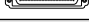

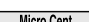

Appendices

Troubleshooting

The SCSI device(s) connected to the USB-SCSI Adapter is not detected by my computer.

- Make sure the SCSI device(s) are powered up and at least one device provides termination power necessary for the Adapter's operation. If you are just connecting one device and that device does not have termination power, make sure the power supply adapter provided with the package is connected. The SCSI device(s) must be powered up AND connected to the Adapter prior to plugging into the USB port.
- If you are using a USB Hub or composite device that has a built-in hub, make sure that the device is self-powered, providing the full 500mA of current required by the Adapter.
- After shutting down your computer, try unplugging then plugging in the Adapter from the USB port.
- Try unplugging the Adapter, turn the power off and back on of the SCSI device(s), then plugging the Adapter back into the USB port.
- Restart your computer with the Adapter connect to the USB port, and all the SCSI device(s) powered up.

Belkin External SCSI Cross-Reference Table

Connectors on Cable	DB25 Male	DB50 Male (3 Row)	Cent 50 Male	Micro DB50 Male	Micro DB68 Male	VHDCI Ultra Micro Cent 68 Female	Micro Cent 50 Male	HD130 Male
DB25 Male 	F2A047-XX	SPECIAL	F2N954-XX	F2N992-XX	F2N1035-XX	A2N1067-XX	F2N998-XX	F2N982-XX
DB50 Male (3 Row) 	SPECIAL	F2N966-XX	F2N964-XX	F2N960-XX	F2N997-XX	SPECIAL	SPECIAL	SPECIAL
Cent 50 Male 	F2N954-XX	F2N964-XX	F2N956-XX	F2N962-XX	F2N973-XX	A2N1064-XX	F2N963-XX	F2N984-XX
Micro DB50 Male 	F2N992-XX	F2N960-XX	F2N962-XX	F2N968-XX	F2N977-XX	A2N1065-XX	F2N971-XX	F2N983-XX
Micro DB68 Male 	F2N1035-XX	F2N997-XX	F2N973-XX	F2N977-XX	F2N991-XX	F2N1066-XX	F2N1000-XX	SPECIAL
VHDCI Ultra Micro Cent 68 Male 	A2N1067-XX	SPECIAL	A2N1064-XX	F2N1065-XX	F2N1066-XX	SPECIAL	SPECIAL	SPECIAL
Micro Cent 50 Male 	F2N998-XX	SPECIAL	F2N963-XX	F2N971-XX	F2N1000-XX	SPECIAL	F2N961-XX	SPECIAL
Micro Cent 50 Male 	F2N982-XX	SPECIAL	F2N984-XX	F2N983-XX	SPECIAL	SPECIAL	SPECIAL	SPECIAL

This is only a partial listing of our most common SCSI Cable Assemblies. Contact your Belkin sales representative for assistance in choosing the cable you need.

Belkin USB to SCSI Uninstall

To uninstall the USB to SCSI Adapter,
do the following:

Note: Do not unplug the Belkin USB to SCSI from the computer until completing the following.

A. For PC

1. Right click on the "My Computer" icon on your desktop. Select "Properties" then "Device Manager". Look for "Universal serial bus controller", click on the "Plus" sign beside it, highlight "Belkin eUSB SCSI Adapter" then click Remove. Click OK. Close Device Manager.
2. Click on Start/Find/Files and Folders. Under "Named" type Bel*.* , under "Look In" put it on the C drive then click on "Find Now". Delete all the four items that will appear namely: Beluscsi.sys, Belmsd.pdr, Belmsd, and Belkin Component....
3. You can now unplug the Belkin USB to SCSI adapter from the computer. Restart your computer.

B. For Mac

1. Double click on your "Hard Drive" icon and look for "System Folder"/Double click on "System Folder".
2. In "System Folder", look for another folder called "Extensions". Under "Extensions" look for the following files: "Belkin USB-SCSI" and "Belkin USB-SCSI SIM". Drag these 2 files to the Trash Bin.
3. You can now unplug the Belkin USB to SCSI adapter from the computer. Restart your computer.

Information

FCC Statement

DECLARATION OF CONFORMITY WITH FCC RULES FOR ELECTROMAGNETIC COMPATIBILITY

We, Belkin Components, of 501 West Walnut Street, Compton CA 90220, declare under our sole responsibility that the product:
F5U015-TWP

to which this declaration relates:

Complies with Part 15 of the FCC Rules. Operation is subject to the following two conditions: (1) this device may not cause harmful interference, and (2) this device must accept any interference received, including interference that may cause undesired operation.

CE Declaration of Conformity

We, Belkin Components, declare under our sole responsibility that the F5U105-TWP, to which this declaration relates, is in conformity with Generic Emissions Standard EN50081-1 and with Generic Immunity Standard EN500A1-1 1992.

Belkin Components Limited Lifetime Product Warranty

Belkin Components warrants this product against defects in materials and workmanship for its lifetime. If a defect is discovered, Belkin will, at its option, repair or replace the product at no charge provided it is returned during the warranty period, with transportation charges prepaid, to the authorized Belkin dealer from whom you purchased the product. Proof of purchase may be required.

This warranty does not apply if the product has been damaged by accident, abuse, misuse, or misapplication; if the product has been modified without the written permission of Belkin; or if any Belkin serial number has been removed or defaced.

THE WARRANTY AND REMEDIES SET FORTH ABOVE ARE EXCLUSIVE IN LIEU OF ALL OTHERS, WHETHER ORAL OR WRITTEN, EXPRESSED OR IMPLIED. BELKIN SPECIFICALLY DISCLAIMS ANY AND ALL IMPLIED WARRANTIES, INCLUDING, WITHOUT LIMITATION, WARRANTIES OF MERCHANTABILITY AND FITNESS FOR A PARTICULAR PURPOSE.

No Belkin dealer, agent, or employee is authorized to make any modification, extension, or addition to this warranty.

BELKIN IS NOT RESPONSIBLE FOR SPECIAL, INCIDENTAL, OR CONSEQUENTIAL DAMAGES RESULTING FROM ANY BREACH OF WARRANTY, OR UNDER ANY OTHER LEGAL THEORY, INCLUDING BUT NOT LIMITED TO LOST PROFITS, DOWNTIME, GOODWILL, DAMAGE TO OR REPROGRAMMING, OR REPRODUCING ANY PROGRAM OR DATA STORED IN OR USED WITH BELKIN PRODUCTS.

Some states do not allow the exclusion or limitation of incidental or consequential damages or exclusions of implied warranties, so the above limitations of exclusions may not apply to you. This warranty gives you specific legal rights, and you may also have other rights that vary from state to state.

Compatibility List

A. Devices that work Stand-alone

- **SCSI Hard Drives**
 - Seagate ST31220A - 2GB
 - Seagate ST51080N - 1GB
 - Microtech P-E-2000 - 2GB
- **SCSI Removable Media Drives**
 - Coniglio MO 230MB (FujitsuDrive M2512A)
 - Fujitsu 640 Dyna MO - M2513A - F/W: 1300
 - Fujitsu 640 Dyna MO SE - M2513EL - F/W: 0010
 - Iomega Jaz - 1 GB F/W J.66
 - Iomega Jaz - 2GB F/W E.17
 - Olympus 640 MO - S350 - F/W: 1.20
 - SCSI - Panasonic PD device - LF 1000
 - SyQuest SQ270 - 270MB
- **SCSI CDD\CDR\CD-Changer**
 - Sony 4X - CDU 76S SCSI CDD F/W 1.0a.
 - NAKAMICHI 4 tray CD-Changer - MJ 4.8
 - NEC Multispin 4x - 7 tray CD-Changer - NRC MBR - 7.4
 - Sanyo CRD-254S F/W 1.02
 - Philips Omniwriter26 (Ricoh) F/W 2.03
 - Sony CDR CDU948S F/W 1.0h
 - Philips CDD2600 F/W 1.07
 - Plextor DX-327S F/W 1.02
 - Teac CD-532S 1.0a
- **SCSI Tape drives**
 - Exabyte 8585S F/W 06M0
 - Conner-TR4 CTT- 8000IS F/W 1.17
 - HO-C1533A F/W 9503
 - Microtech MicroDAT 8000

Compatibility List (cont.)

- **SCSI Scanners**
 - HP 5P C5110A F/W 3638
 - Pixelcraft Pro Image 2400 Scanner
 - UMAX ProLook 2000
 - **Other**
 - Microtech Digital PhotoAlbum - PC Card Reader
 - Microtech Digital PhotoAlbum.p - PC Card Reader
 - Microtech Digital PhotoAlbum Pro - PC Card Reader
 - SCM Microsystems (Intermart) PCD-10
 - SCM Microsystems (Intermart) PCD-15
 - SCM Microsystems (Intermart) PCD-25
- B. Devices that work on a SCSI chain/or may require the included power adapter and DB25 adapter**
- **SCSI Hard Drives**
 - Seagate ST31220A - 2GB
 - Seagate ST51080N - 1GB
 - Microtech P-E-2000 - 2 GB
 - **SCSI Removable Media Drives**
 - Iomega Jaz - 1 GB F/W J.66
 - Iomega Jaz - 2GB F/W E.17
 - Iomega Zip 100 (SCSI) F/W J.66
 - Fujitsu 640 Dyna MO - M2513A - F/W: 1300
 - Fujitsu 640 Dyna MO SE - M2513EL - F/W: 0010
 - Olympus 640 MO - S350 - F/W: 1.20
 - SCSI - Panasonic PD device - LF 1000

Compatibility List (cont.)

- SyQuest SQ270 - 270MB
- **SCSI CDD\CDR\CD-Changer**
 - Sony 4X - CDU 76S SCSI CDD F/W 1.0a.
 - NAKAMICHI 4 tray CD-Changer - MJ 4.8
 - NEC Multispin 4x - 7 tray CD-Changer - NRC MBR - 7.4
 - Sanyo CRD-254S F/W 1.02
 - Philips Omniwriter26 (Ricoh) F/W 2.03
 - Sony CDR CDU948S F/W 1.0h
 - Philips CDD2600 F/W 1.07
 - Plextor DX-327S F/W 1.02
 - Teac CD-532S 1.0a
- **SCSI Tape drives**
 - Exabyte 8585S F/W 06M0
 - Conner-TR4 CTT- 8000IS F/W 1.17
 - HO-C1533A F/W 9503
 - Microtech MicroDAT 8000
- **SCSI Scanners**
 - HP 5P C5110A F/W 3638
 - Pixelcraft Pro Image 2400 Scanner
 - UMAX Power Look 2000
- **Other**
 - Microtech Digital PhotoAlbum - PC Card Reader
 - Microtech Digital PhotoAlbum.p - PC Card Reader
 - Microtech Digital PhotoAlbum Pro - PC Card Reader
 - SCM Microsystems (Intermart) PCD-10
 - SCM Microsystems (Intermart) PCD-15

Compatibility List (cont.)

- SCM Microsystems (Intermart) PCD-25

C. Currently incompatible devices

- Nikon LS-2000 Film Scanner (Super Coolscan 2000)
- Microtech Digital PhotoAlbum_P (Old MP01625)
- Microtech Digital PhotoAlbum (Old MP01610A)
- UMAX Power Look III



belkin.com

Belkin Components

501 West Walnut Street
Compton • CA • 90220 • USA
Tel: 310.898.1100
Fax: 310.898.1111

Belkin Components, Ltd.

Unit 13 • Gatelodge Close • Round Spinney
Northampton • Northants • NN3 8RX • UK
Tel: +44 (0) 1604678300
Fax: +44 (0) 1604678330

Belkin Components B.V.

Diamantlaan 8 • 2132 WV
Hoofddorp • The Netherlands
Tel: +31 (0) 235698765
Fax: +31 (0) 235612694

© 2000 Belkin Components. All rights reserved. All trade names are registered trademarks of respective manufacturers listed.

Free Manuals Download Website

<http://myh66.com>

<http://usermanuals.us>

<http://www.somanuals.com>

<http://www.4manuals.cc>

<http://www.manual-lib.com>

<http://www.404manual.com>

<http://www.luxmanual.com>

<http://aubethermostatmanual.com>

Golf course search by state

<http://golfingnear.com>

Email search by domain

<http://emailbydomain.com>

Auto manuals search

<http://auto.somanuals.com>

TV manuals search

<http://tv.somanuals.com>