

## Firmware Upgrade Instructions

F1DP108A



The SMB CAT5 KVM Switch has two main components that are flash-upgradeable, the Master unit and the Remote units. The Master unit section allows you to upgrade the SMB OSD or the SMB Manager. The Remote units allow you to upgrade the Server Interface Modules (SIMs) that are attached to your KVM Switch.

When performing the flash-upgrade, you need to ensure that the firmware file used corresponds to the component you want to upgrade.

### Before you begin:

Before you attempt to update the firmware of your Belkin SMB CAT5 KVM Switch, you will need the following items:

- A computer running Windows® 98, Me, 2000, XP, or Windows NT® 4.0 SP3 or later
- An available serial port
- The included DB9-to-RJ11 flash cable
- The Belkin SMB Update Utility and firmware file for the component to be updated—all files can be downloaded from <http://www.belkin.com/support/>.

**Note:** During the flash-upgrade process, the KVM Switch and all of the attached devices, including the keyboard, monitor, mouse, CAT5 cables, server interface modules, and servers, must remain connected and powered on. The screen of the monitor attached to the KVM Switch will go dark during the upgrade process. The process may take up to five minutes.

### Installing the SMB Update Utility:

1. Download and run the SMB Update Utility from the Belkin website.
2. Click the “Next” button when prompted and then configure the file location, the shortcut folder, and the appropriate COM port number, and then click on the “install” button when prompted.
3. On the setup completion window, uncheck the box and then click “Finish”.

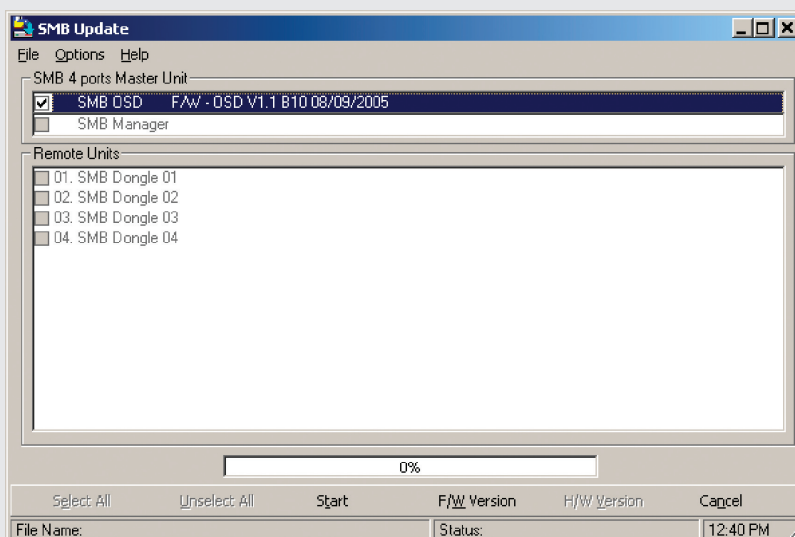
### Connecting the computer to the KVM switch:

4. Connect the DB9 end of the flash cable into the serial port of your computer and the RJ11 end into the port labeled “flash” on the back of the Switch.

**Note:** You may use a computer that is connected to the SMB KVM Switch to upgrade the firmware. The screen of the monitor attached to the KVM Switch will go dark during the upgrade process. The process may take up to five minutes.

### Performing the flash-upgrade:

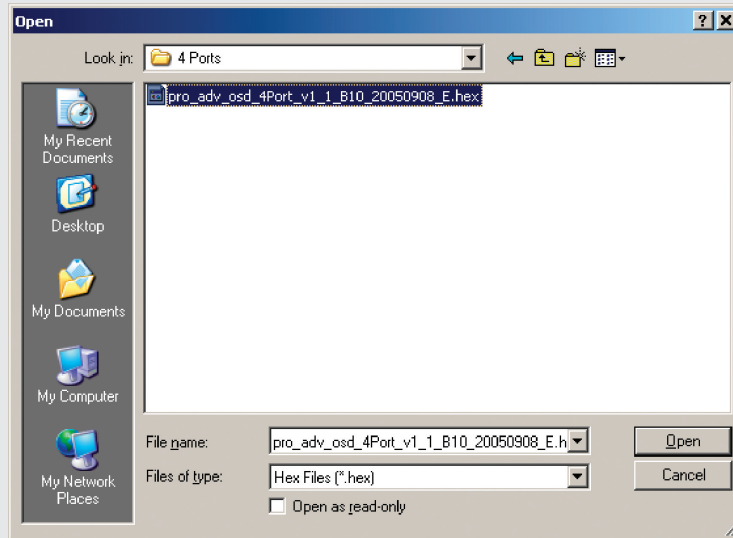
5. To start the flash-upgrade process, click on the Belkin SMB Update shortcut from the “Start” menu or the desktop shortcut.
6. Check the box next to the component that you want to update. You may only upgrade one component at a time.



**Note:** We recommend that prior to upgrading the firmware, you document the firmware version for all components. To check the firmware version, click the “F/W Version” button at the bottom of the screen as shown in the example above.

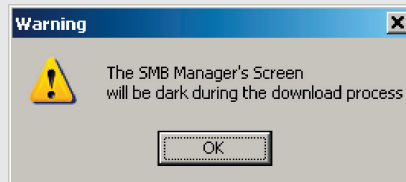
- Click on "File", select "Open", and navigate to the saved location of the firmware; next, select the firmware file, and then click "Open". You should see the selected upgrade file name appear on the bottom left of the SMB update window.

**Note:** When performing the flash-upgrade, be sure to select the correct firmware file for the component that you are upgrading. If you select the wrong file, you will see an "Invalid Hex File" notification next to the component you are trying to update. It is recommended that you disable security before performing the firmware upgrade, in the event that your OSD settings are reset.

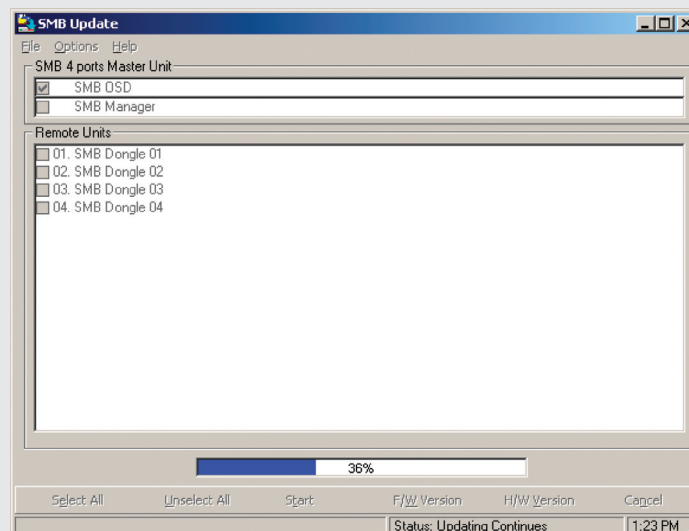


- Click on the "Start" button.

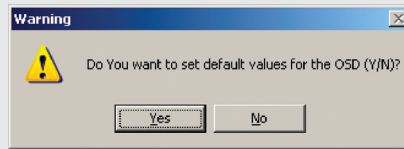
**Note:** Ensure that the KVM Switch and all of the attached devices, including the keyboard, monitor, mouse, CAT5 cables, and server interface modules, are properly connected and powered on. It is recommended that you disable security before performing the firmware upgrade, in the event that your OSD settings are reset.



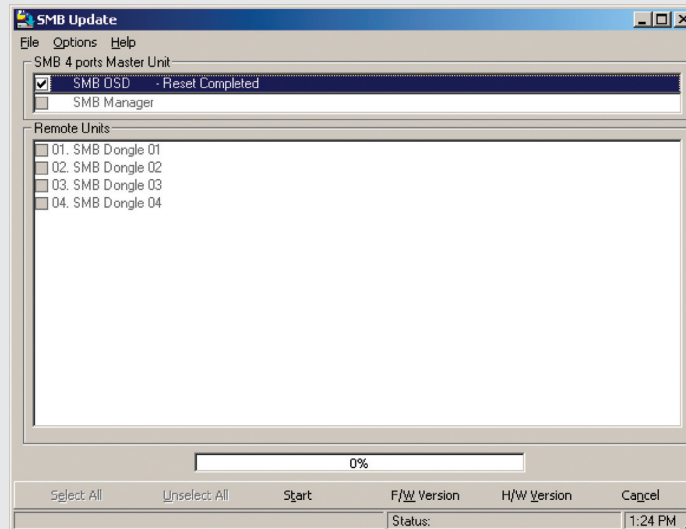
- In the warning window, click on the "OK" button.
- At the bottom of the "SMB Update" window, a progress bar displays the status of the upgrade.



11. When flash-upgrading the SMB Manager, the warning below will appear. Select “No” if you would like to retain your current on-screen display settings; selecting “Yes” will reset the OSD to the factory defaults.



12. After the flash-upgrade process is complete, click on “Options”, and “Advanced”, and then click on “Reset Device”.



13. The firmware upgrade process is now complete; uncheck the box next to the component you have upgraded.  
 14. You can now repeat steps 6 through to 13 on all additional components. If you are upgrading the remote units, you can select multiple dongles with the same connection type, e.g., PS/2, and simultaneously flash-upgrade the firmware on all PS/2 dongles.

## BELKIN®

[www.belkin.com](http://www.belkin.com)

Belkin Tech Support  
 US: 800-223-5546 ext. 2263  
 310-898-1100 ext. 2263  
 Europe: 00 800 223 55 460  
 Australia: 1800 235 546  
 New Zealand: 0800 235 546  
 Singapore: 800 616 1790

Belkin Corporation  
 501 West Walnut Street  
 Los Angeles, CA 90220-5221, USA  
 310-898-1100  
 310-898-1111 fax

Belkin Ltd.  
 Express Business Park, Shipton Way  
 Rushden, NN10 6GL, United Kingdom  
 +44 (0) 1933 35 2000  
 +44 (0) 1933 31 2000 fax

Belkin B.V.  
 Boeing Avenue 333  
 1119 PH Schiphol-Rijk, The Netherlands  
 +31 (0) 20 654 7300  
 +31 (0) 20 654 7349 fax

Belkin Ltd.  
 7 Bowen Crescent, West Gosford  
 NSW 2250, Australia  
 +61 (0) 2 4372 8600  
 +61 (0) 2 4372 8603 fax

25WEB062

## Free Manuals Download Website

<http://myh66.com>

<http://usermanuals.us>

<http://www.somanuals.com>

<http://www.4manuals.cc>

<http://www.manual-lib.com>

<http://www.404manual.com>

<http://www.luxmanual.com>

<http://aubethermostatmanual.com>

Golf course search by state

<http://golfingnear.com>

Email search by domain

<http://emailbydomain.com>

Auto manuals search

<http://auto.somanuals.com>

TV manuals search

<http://tv.somanuals.com>