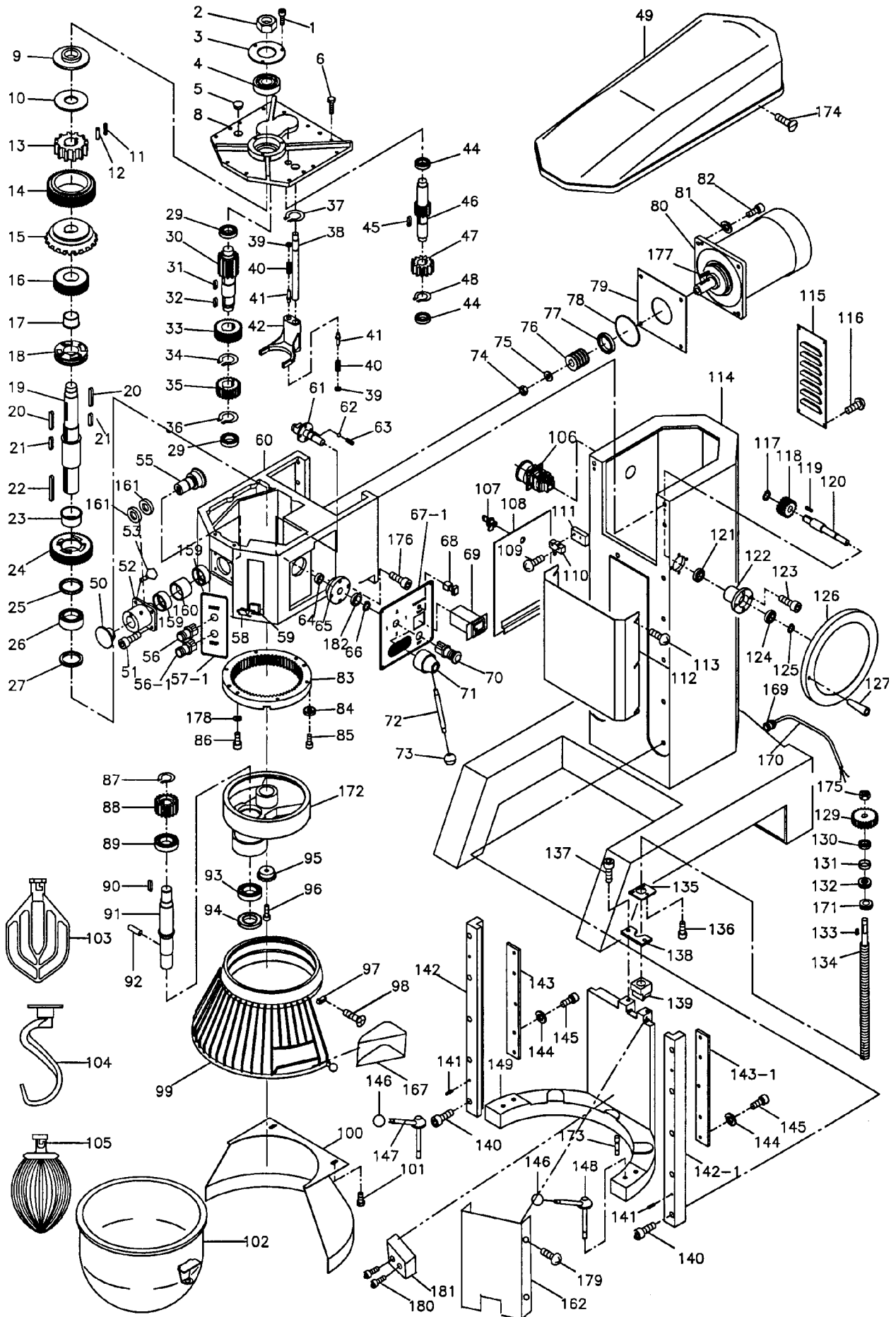




# Model PM60 & PM80 Mixers

## Exploded Views and Parts List

PM60/80



## PM 60 / 80 MANUAL BOWL LIFT PARTS LIST

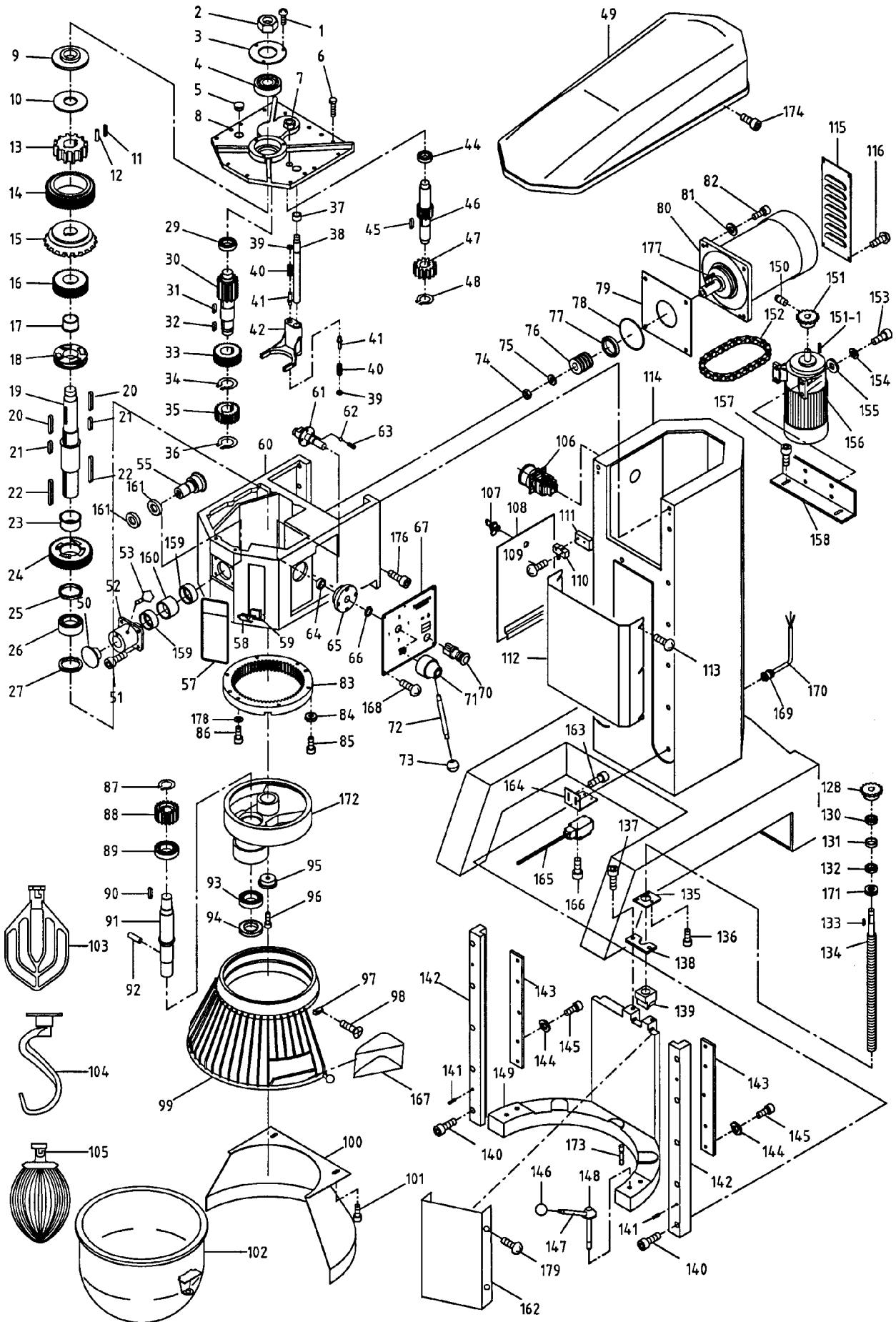
ITEM #	DESCRIPTION	PART NUMBER
1	BOLT	PM60/PM80-00001
2	TOP NUT	PM60/PM80-00002
3	WASHER	PM60/PM80-00003
4	BEARING	PM60/PM80-00004
5	NUT	PM60/PM80-00005
6	BOLT	PM60/PM80-00006
7	NUT	PM60/PM80-00007
8	SHAFT COVER	PM60/PM80-00008
9	UPPER SPACER	PM60/PM80-00009
10	WASHER	PM60/PM80-00010
11	SLOW SPEED CLIP	PM60/PM80-00011
12	SLOW SPEED PIN	PM60/PM80-00012
13	SLOW SPEED GEAR 12T	PM60/PM80-00013
14	OUTER SLOW SPEED GEAR	PM60/PM80-00014
15	BEVEL GEAR	PM60/PM80-00015
16	UPPER CLUTCH GEAR	PM60/PM80-00016
17	BUSHING	PM60/PM80-00017
18	SLEEVE CLUTCH	PM60/PM80-00018
19	CENTER SHAFT	PM60/PM80-00019
20	KEYWAY	PM60/PM80-00020
21	KEYWAY	PM60/PM80-00021
22	KEYWAY	PM60/PM80-00022
23	BUSHING	PM60/PM80-00023
24	LOWER CLUTCH GEAR	PM60/PM80-00024
25	LOWER SPACER	PM60/PM80-00025
26	BEARING (CTR. SHAFT)	PM60/PM80-00026
27	SEAL	PM60/PM80-00027
28	SNAP RING	PM60/PM80-00028
29	BEARING-TRNS.SHAFT	PM60/PM80-00029
30	TRANSMISSION SHAFT	PM60/PM80-00030
31	KEYWAY	PM60/PM80-00031
32	KEYWAY	PM60/PM80-00032
33	GEAR	PM60/PM80-00033
34	SNAP RING	PM60/PM80-00034
35	GEAR	PM60/PM80-00035
36	SNAP RING	PM60/PM80-00036
37	NUT	PM60/PM80-00037
38	YOKE SHIFT ROD	PM60/PM80-00038
39	NUT	PM60/PM80-00039
40	SPRING	PM60/PM80-00040
41	PIN	PM60/PM80-00041
42	YOKE SHIFTER	PM60/PM80-00042
43	SNAP RING	PM60/PM80-00043
44	BEARING (WORM GEAR)	PM60/PM80-00044
45	KEYWAY	PM60/PM80-00045
46	WORM GEAR SHAFT	PM60/PM80-00046
47	BRASS WORM GEAR	PM60/PM80-00047
48	SNAP RING	PM60/PM80-00048
49	TOP COVER (FIBER)	PM60/PM80-00049
50	ATTCH HUB PLUG	PM60/PM80-00050
51	ATTCH HUB SCREW	PM60/PM80-00051
52	ATTACHMENT HUB	PM60/PM80-00052
53	THUMB SCREW	PM60/PM80-00053
54	BEARING	PM60/PM80-00054
55	BEVEL DRIVE GEAR	PM60/PM80-00055
56	GREEN ON SWITCH	PM60/PM80-00056-A
56-1	RED OFF SWITCH	PM60/PM80-00056-B

ITEM #	DESCRIPTION	PART NUMBER
57-1	SWITCH PLATE	PM60/PM80-00057-1
58	MICROSWITCH-SFTY.GRD	PM60/PM80-00058
59	MICROSWITCH PLATE	PM60/PM80-00059
60	TRANSMISSION CASE	PM60/PM80-00060
61	SPEED CHANGE MECH.	PM60/PM80-00061
62	SPEED CHANGE BALL	PM60/PM80-00062
63	SPEED CHANGE SPRING	PM60/PM80-00063
64	CAM	PM60/PM80-00064
65	LOCKING UNIT	PM60/PM80-00065
66	RUBBER RING	PM60/PM80-00066
67-1	PLATE	PM60/PM80-00067-1
68	TIME SELECT SWITCH	PM60/PM80-00068
69	TIMER	PM60/PM80-00069
70	EMERGENCY STOP	PM60/PM80-00070
71	SPEED CHANGE BASE	PM60/PM80-00071
72	SPEED CHANGE ROD	PM60/PM80-00072
73	SPEED CHANGE KNOB	PM60/PM80-00073
74	NUT	PM60/PM80-00074
75	WASHER	PM60/PM80-00075
76	WORM	PM60/PM80-00076
77	OIL SEAL	PM60/PM80-00077
78	O RING	PM60/PM80-00078
79	GASKET	PM60/PM80-00079
80	STATOR	PM60/PM80-00080
81	WASHER	PM60/PM80-00081
82	BOLT	PM60/PM80-00082
83	INTERNAL GEAR	PM60/PM80-00083
84	SPRING WASHER	PM60/PM80-00084
85	BOLT	PM60/PM80-00085
86	BOLT	PM60/PM80-00086
87	SNAP RING	PM60/PM80-00087
88	BEATER SHAFT GEAR	PM60/PM80-00088
89	BEARING-BTR.SHAFT	PM60/PM80-00089
90	KEY WAY	PM60/PM80-00090
91	BEATER SHAFT	PM60/PM80-00091
92	BEATER SHAFT PIN	PM60/PM80-00092
93	BEARING	PM60/PM80-00093
94	SEAL	PM60/PM80-00094
95	BOTTOM NUT	PM60/PM80-00095
96	BOLT	PM60/PM80-00096
97	SAFETY GUARD STOP	PM60/PM80-00097
98	SAFETY GUARD SCREW	PM60/PM80-00098
99	SAFETY GUARD	PM60/PM80-00099
100	SPLASH GUARD	PM60/PM80-00100
101	BOLT	PM60/PM80-00101
102	S/S BOWL	PM60/PM80-00102
103	FLAT BEATER	PM60/PM80-00103
104	HOOK	PM60/PM80-00104
105	S/S WHIP	PM60/PM80-00105
106	POWER SWITCH	PM60/PM80-00106
110	MICROSWITCH	PM60/PM80-00110
111	FIBER BOARD	PM60/PM80-00111
112	APRON	PM60/PM80-00112
113	BOLT	PM60/PM80-00113
114	PEDESTAL	PM60/PM80-00114
115	VENT	PM60/PM80-00115
116	BOLT	PM60/PM80-00116

## PM 60 / 80 MANUAL BOWL LIFT PARTS LIST

ITEM #	DESCRIPTION	PART NUMBER
117	C-CLIP	PM60/PM80-00117
118	GEAR	PM60/PM80-00118
119	KEY WAY	PM60/PM80-00119
120	HANDLE SHAFT	PM60/PM80-00120
121	BEARING	PM60/PM80-00124
122	LIFT HOLDING	PM60/PM80-00122
123	BOLT	PM60/PM80-00123
124	BEARING	PM60/PM80-00124
125	C-CLIP	PM60/PM80-00125
126	WHEEL	PM60/PM80-00126
127	HANDLE	PM60/PM80-00127
128	SCREW	PM60/PM80-00128
129	GEAR	PM60/PM80-00129
130	DRIVE UNIT	PM60/PM80-00130
131	BRASS NUT	PM60/PM80-00131
132	DRIVE UNIT	PM60/PM80-00132
133	KEY WAY	PM60/PM80-00133
134	THREAD SHAFT	PM60/PM80-00134
135	STOPPER	PM60/PM80-00135
136	BOLT	PM60/PM80-00136
137	BOLT	PM60/PM80-00137
138	BOWL LIFT BRACKET	PM60/PM80-00138
139	THREAD NUT	PM60/PM80-00139
140	BOLT	PM60/PM80-00140
141	PIN	PM60/PM80-00141
142	GUIDE	PM60/PM80-00142
143	SLIDE WAYS	PM60/PM80-00143
144	SPRING WASHER	PM60/PM80-00144
145	BOLT	PM60/PM80-00145
146	KNOB	PM60/PM80-00146
147	BOWL CLAMP ROD	PM60/PM80-00147
148	BOWL CLAMP	PM60/PM80-00148
149	BOWL SUPPORT	PM60/PM80-00149
150	TRANSFORMER	PM60/PM80-00150
151	RELAY	PM60/PM80-00151
159	BEARING	PM60/PM80-00159
160	BRASS BUSHING	PM60/PM80-00160
161	BRASS BUSHING	PM60/PM80-00161
162	LIFTING APRON	PM60/PM80-00162
167	INGREDIENT CHUTE	PM60/PM80-00167
169	HARNESS	PM60/PM80-00169
170	WIRE/PLUG	PM60/PM80-00170
172	PLANETARY	PM60/PM80-00172
173	BOWL SUPPORT PIN	PM60/PM80-00173
174	BOLT	PM60/PM80-00174
175	NUT	PM60/PM80-00175
176	BOLT	PM60/PM80-00176
177	PIN	PM60/PM80-00177
178	SPRING WASHER	PM60/PM80-00178
179	NUT	PM60/PM80-00179
180	SCREW	PM60/PM80-00180
181	STOP, BOWL SUPPORT	PM60/PM80-00181
182	NUT	PM60/PM80-00182

PM60-6/80 Electric bowl lift  
(Digital panel)



PM 60 / 80 ELECTRIC BOWL LIFT PARTS LIST

ITEM #	DESCRIPTION	PART NUMBER
1	BOLT	PM60/PM80-00001
2	TOP NUT	PM60/PM80-00002
3	WASHER	PM60/PM80-00003
4	BEARING	PM60/PM80-00004
5	NUT	PM60/PM80-00005
6	BOLT	PM60/PM80-00006
8	SHAFT COVER	PM60/PM80-00008
9	UPPER SPACER	PM60/PM80-00009
10	WASHER	PM60/PM80-00010
11	SLOW SPEED CLIP	PM60/PM80-00011
12	SLOW SPEED PIN	PM60/PM80-00012
13	SLOW SPEED GEAR 12T	PM60/PM80-00013
14	OUTER SLOW SPEED GEAR	PM60/PM80-00014
15	BEVEL GEAR	PM60/PM80-00015
16	UPPER CLUTCH GEAR	PM60/PM80-00016
17	BUSHING	PM60/PM80-00017
18	SLEEVE CLUTCH	PM60/PM80-00018
19	CENTER SHAFT	PM60/PM80-00019
20	KEYWAY	PM60/PM80-00020
21	KEYWAY	PM60/PM80-00021
22	KEYWAY	PM60/PM80-00022
23	BUSHING	PM60/PM80-00023
24	LOWER CLUTCH GEAR	PM60/PM80-00024
25	LOWER SPACER	PM60/PM80-00025
26	BEARING (CTR. SHAFT)	PM60/PM80-00026
27	SEAL	PM60/PM80-00027
29	BEARING-TRNS.SHAFT	PM60/PM80-00029
30	TRANSMISSION SHAFT	PM60/PM80-00030
31	KEYWAY	PM60/PM80-00031
32	KEYWAY	PM60/PM80-00032
33	GEAR	PM60/PM80-00033
34	SNAP RING	PM60/PM80-00034
35	GEAR	PM60/PM80-00035
36	SNAP RING	PM60/PM80-00036
37	SNAP RING	PM60/PM80-00037
38	YOKE SHIFT ROD	PM60/PM80-00038
39	NUT	PM60/PM80-00039
40	SPRING	PM60/PM80-00040
41	PIN	PM60/PM80-00041
42	YOKE SHIFTER	PM60/PM80-00042
44	BEARING (WORM GEAR)	PM60/PM80-00044
45	KEYWAY	PM60/PM80-00045
46	WORM GEAR SHAFT	PM60/PM80-00046
47	BRASS WORM GEAR	PM60/PM80-00047
48	SNAP RING	PM60/PM80-00048
49	TOP COVER (FIBER)	PM60/PM80-00049
50	ATTCH HUB PLUG	PM60/PM80-00050
51	ATTCH. HUB SCREW	PM60/PM80-00051
52	ATTACHMENT HUB	PM60/PM80-00052
53	THUMB SCREW	PM60/PM80-00053

ITEM #	DESCRIPTION	PART NUMBER
55	BEVEL DRIVE GEAR	PM60/PM80-00055
57	SWITCH PLATE	PM60/PM80-00057
58	MICROSWITCH-SFTY.GRD	PM60/PM80-00058
59	MICROSWITCH PLATE	PM60/PM80-00059
60	TRANSMISSION CASE	PM60/PM80-00060
61	SPEED CHANGE MECH.	PM60/PM80-00061
62	SPEED CHANGE BALL	PM60/PM80-00062
63	SPEED CHANGE SPRING	PM60/PM80-00063
64	CAM	PM60/PM80-00064
65	LOCKING UNIT	PM60/PM80-00065
66	RUBBER RING	PM60/PM80-00066
67	PLATE	PM60/PM80-00067
70	EMERGENCY STOP	PM60/PM80-00070
71	SPEED CHANGE BASE	PM60/PM80-00071
72	SPEED CHANGE ROD	PM60/PM80-00072
73	SPEED CHANGE KNOB	PM60/PM80-00073
74	NUT	PM60/PM80-00074
75	WASHER	PM60/PM80-00075
76	WORM	PM60/PM80-00076
77	OIL SEAL	PM60/PM80-00077
78	O RING	PM60/PM80-00078
79	GASKET	PM60/PM80-00079
80	STATOR	PM60/PM80-00080
81	WASHER	PM60/PM80-00081
82	BOLT	PM60/PM80-00082
83	INTERNAL GEAR	PM60/PM80-00083
84	SPRING WASHER	PM60/PM80-00084
85	BOLT	PM60/PM80-00085
86	BOLT	PM60/PM80-00086
87	SNAP RING	PM60/PM80-00087
88	BEATER SHAFT GEAR	PM60/PM80-00088
89	BEARING-BTR.SHAFT	PM60/PM80-00089
90	KEY WAY	PM60/PM80-00090
91	BEATER SHAFT	PM60/PM80-00091
92	BEATER SHAFT PIN	PM60/PM80-00092
93	BEARING	PM60/PM80-00093
94	SEAL	PM60/PM80-00094
95	BOTTOM NUT	PM60/PM80-00095
96	BOLT	PM60/PM80-00096
97	SAFETY GUARD STOP	PM60/PM80-00097
98	SAFETY GUARD SCREW	PM60/PM80-00098
99	SAFETY GUARD	PM60/PM80-00099
100	SPLASH GUARD	PM60/PM80-00100
101	BOLT	PM60/PM80-00101
102	S/S BOWL	PM60/PM80-00102
103	FLAT BEATER	PM60/PM80-00103
104	HOOK	PM60/PM80-00104
105	S/S WHIP	PM60/PM80-00105
106	POWER SWITCH	PM60/PM80-00106
107	LOCKING HANDLE	PM60/PM80-00107

PM 60 / 80 ELECTRIC BOWL LIFT PARTS LIST

ITEM #	DESCRIPTION	PART NUMBER
108	CONTROL PANEL	PM60/PM80-00108
109	SCREW	PM60/PM80-00109
110	MICROSWITCH	PM60/PM80-00110
111	FIBER BOARD	PM60/PM80-00111
112	APRON	PM60/PM80-00112
113	BOLT	PM60/PM80-00113
114	PEDESTAL	PM60/PM80-00114
115	VENT	PM60/PM80-00115
116	BOLT	PM60/PM80-00116
128	CHAIN GEAR	PM60/PM80-00128
130	DRIVE UNIT	PM60/PM80-00130
131	BRASS NUT	PM60/PM80-00131
132	DRIVE UNIT	PM60/PM80-00132
133	KEY WAY	PM60/PM80-00133
134	THREAD SHAFT	PM60/PM80-00134
135	STOPPER	PM60/PM80-00135
136	BOLT	PM60/PM80-00136
137	BOLT	PM60/PM80-00137
138	BRACKET	PM60/PM80-00138
139	THREAD NUT	PM60/PM80-00139
140	BOLT	PM60/PM80-00140
141	PIN	PM60/PM80-00141
142	GUIDE LEFT	PM60/PM80-00142
142-1	GUIDE RIGHT	PM60/PM80-00142-1
143	SLIDE WAYS LEFT	PM60/PM80-00143
143-1	SLIDE WAYS RIGHT	PM60/PM80-00143-1
144	SPRING WASHER	PM60/PM80-00144
145	BOLT	PM60/PM80-00145
146	KNOB	PM60/PM80-00146
147	BOWL CLAMP ROD	PM60/PM80-00147
148	BOWL CLAMP LEFT	PM60/PM80-00148
148-1	BOWL CLAMP RIGHT	PM60/PM80-00148-1
149	BOWL SUPPORT	PM60/PM80-00149
150	CHAIN GEAR PIN	PM60/PM80-00150
151	CHAIN GEAR	PM60/PM80-00151
151-1	MOTOR PIN	PM60/PM80-00151-1
152	CHAIN	PM60/PM80-00152
153	SCREW	PM60/PM80-00153
154	RING	PM60/PM80-00154
155	WASHER	PM60/PM80-00155
156	ELECTRONIC LIFT MOTOR	PM60/PM80-00156
157	SCREW	PM60/PM80-00157
158	MOUNTING BRACKET	PM60/PM80-00158
159	BEARING	PM60/PM80-00159
160	BRASS BUSHING	PM60/PM80-00160
161	BRASS BUSHING	PM60/PM80-00161
162	LIFTING APRON	PM60/PM80-00162
163	SCREW	PM60/PM80-00163
164	SWITCH BRACKET	PM60/PM80-00164
165	ELECTRICAL SWITCH	PM60/PM80-00165

ITEM #	DESCRIPTION	PART NUMBER
166	SCREW	PM60/PM80-00166
167	INGREDIENTS SLEEVE	PM60/PM80-00167
168	CONTROL PANEL SCREW	PM60/PM80-00168
169	PLUG HARNESS	PM60/PM80-00169
170	WIRE PLUG	PM60/PM80-00170
171	RING	PM60/PM80-00171
172	PLANETARY	PM60/PM80-00172
173	BOWL SUPPORT PIN	PM60/PM80-00173
174	BOLT	PM60/PM80-00174
176	BOLT	PM60/PM80-00176
177	PIN	PM60/PM80-00177
178	SPRING WASHER	PM60/PM80-00178
179	BOLT	PM60/PM80-00179
180	BOLT	PM60/PM80-00180
181	BOWL BRACKET	PM60/PM80-00181
182	RING	PM60/PM80-00182





## Free Manuals Download Website

<http://myh66.com>

<http://usermanuals.us>

<http://www.somanuals.com>

<http://www.4manuals.cc>

<http://www.manual-lib.com>

<http://www.404manual.com>

<http://www.luxmanual.com>

<http://aubethermostatmanual.com>

Golf course search by state

<http://golfingnear.com>

Email search by domain

<http://emailbydomain.com>

Auto manuals search

<http://auto.somanuals.com>

TV manuals search

<http://tv.somanuals.com>