

Billion

tiny USB ISDN TA128

Quick Start Guide

This product is designed for the ISDN with Basic Rate Interface.



For more detailed instructions on configuring and using the device, please refer to the on-line manual in the installation CD.

Package Contents

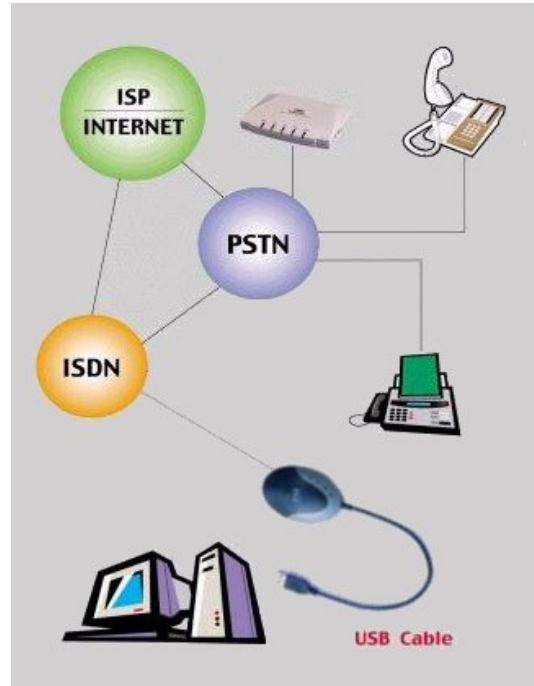
- One tiny USB ISDN TA128 with USB cable built-in
- One tiny USB ISDN TA128 installation CD with drivers and utility software
- One CD with bundled application software programs (optional)
- One RJ-45 ISDN cable
- This quick start guide

The Front Panel LEDs

LED	Meaning
USB	When this LED is lit, it indicates that the USB port is connected to the PC and working properly.
ISDN	When this LED is lit, it indicates that the ISDN S ₀ bus is activated. It will flash when there is message transfer in the D channel.
B1	When this LED is lit, it indicates that the ISDN B1 channel is being accessed. It will flash when there is data transfer in the B1.
B2	When this LED is lit, it indicates that the ISDN B2 channel is being accessed. It will flash when there is data transfer in the B2.

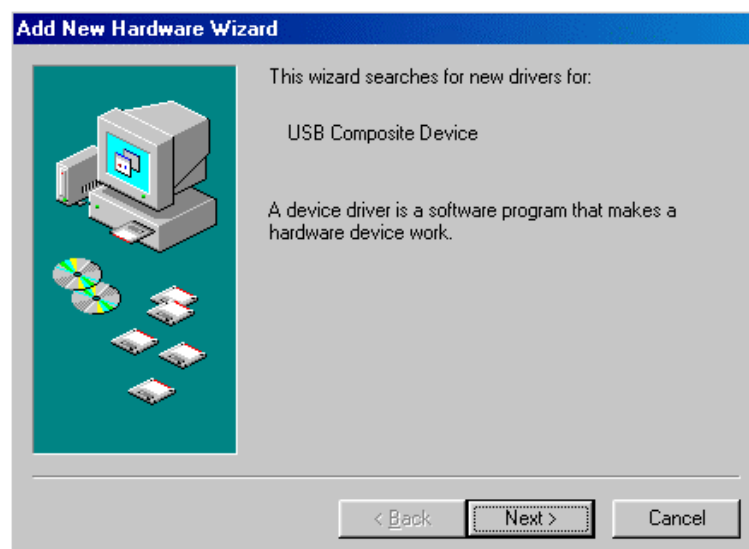
Installing the tiny USB ISDN TA128

Connect your ISDN line to the ISDN S₀ RJ-45 jack. Connect the USB cable to the USB port and connect the other end to the PC. Refer to the following figure.



For Windows 98:

1. Start Windows. After the opening banner, Windows will tell you that the new device has been detected. You will then see the following screen. Click “Next >”.



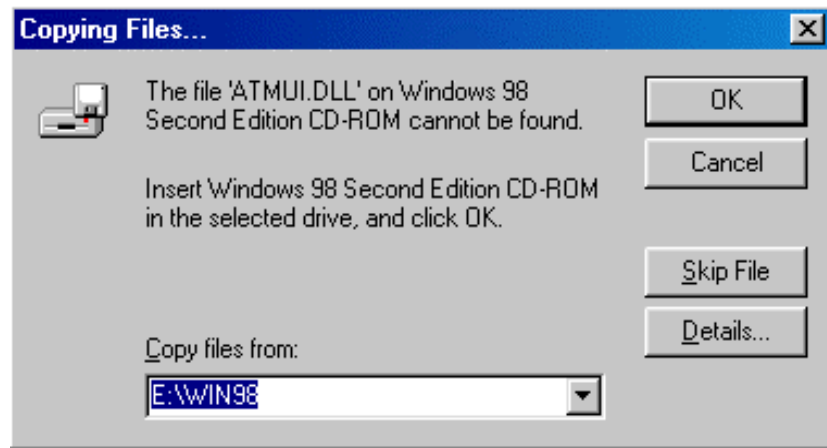
2. In the next window, select “Search for the best driver for your device” and click “Next >”.



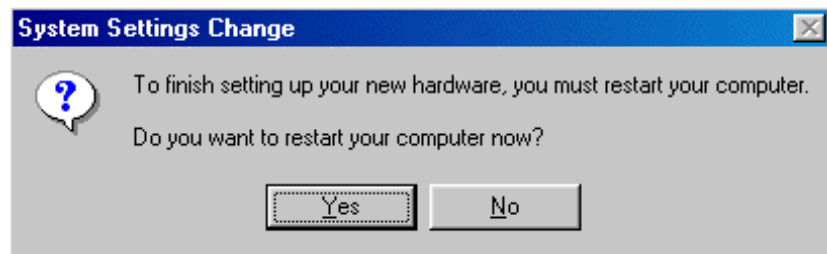
3. Insert the installation CD into the CD-ROM drive and check “CD-ROM drive” in the next window.



4. Continue through the Wizard, clicking the “Next >” buttons. Windows will start copying files to your system. You will see the following screen prompting for the path of the Windows source files. Please specify a location. Click “OK”. Then, click “Finish” in the next window to end the installation.



5. If you are prompted to restart the computer after Windows finishes installing the driver, press “Yes”.

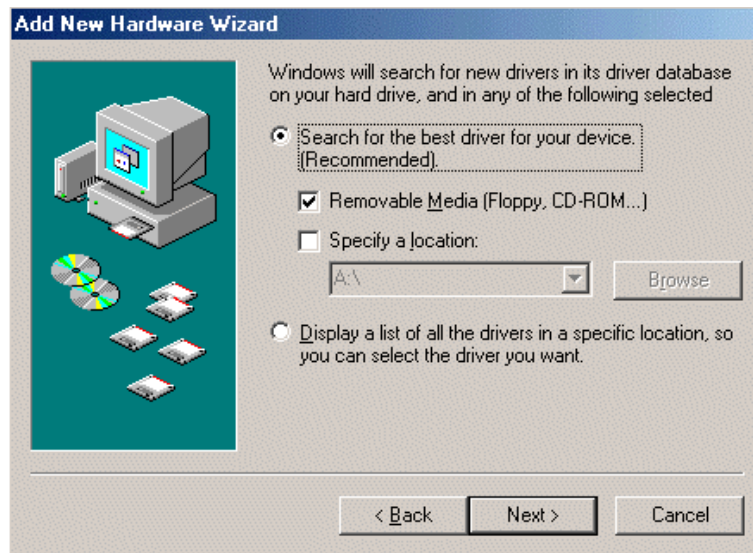


For Windows Me:

1. Start Windows. After the opening banner, Windows will tell you that the new device has been detected. Select “Specify the location of the driver” and click “Next >”.



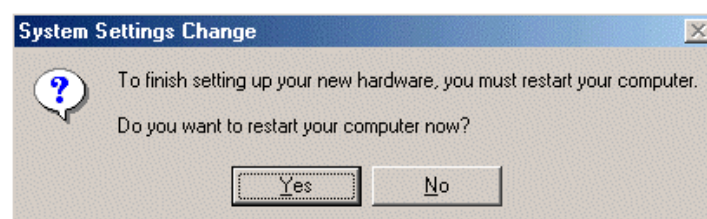
2. In next window, select “Search for the best driver for your device”. Insert the installation CD into the CD-ROM drive and check “Removable Media”. Click the “Next >” button.



3. Continue through the Wizard, clicking “Next >” at the following screens. Windows will start copying files to your system. Then, click “Finish” in the following window.



4. If you are prompted to restart the computer after Windows finishes installing the drivers, press “Yes”.



For Windows 2000:

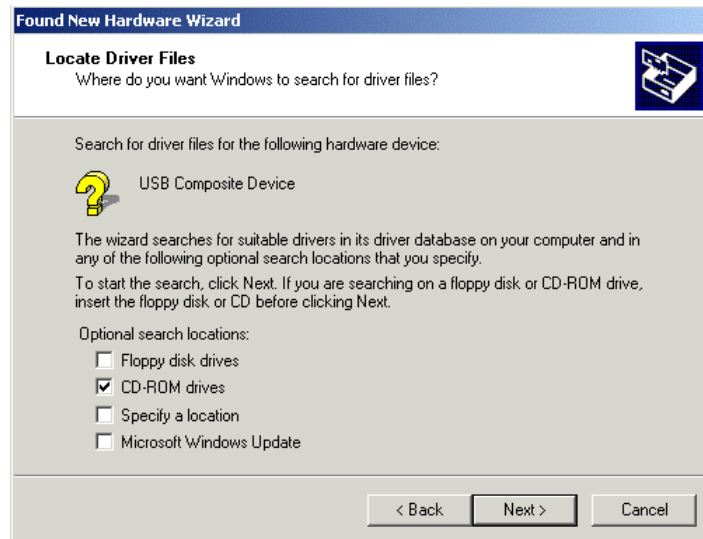
1. Start Windows. After the opening banner, Windows will tell you that the new device has been detected. Click “Next>”.



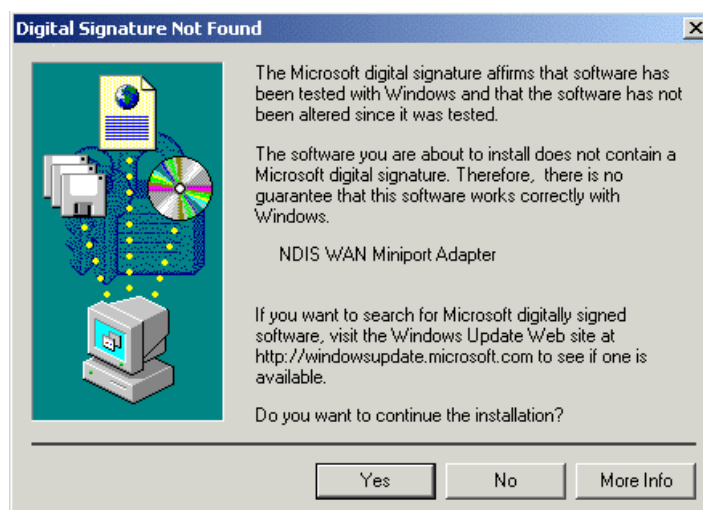
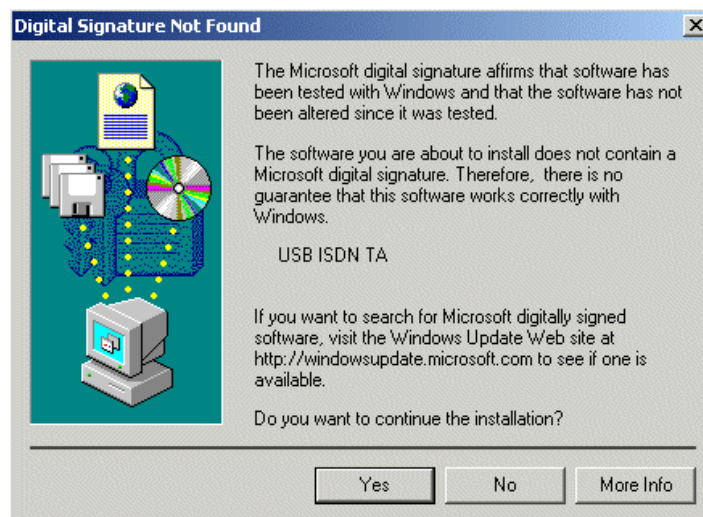
2. In next window, select “Search for a suitable driver for my device”. Click “Next>”.



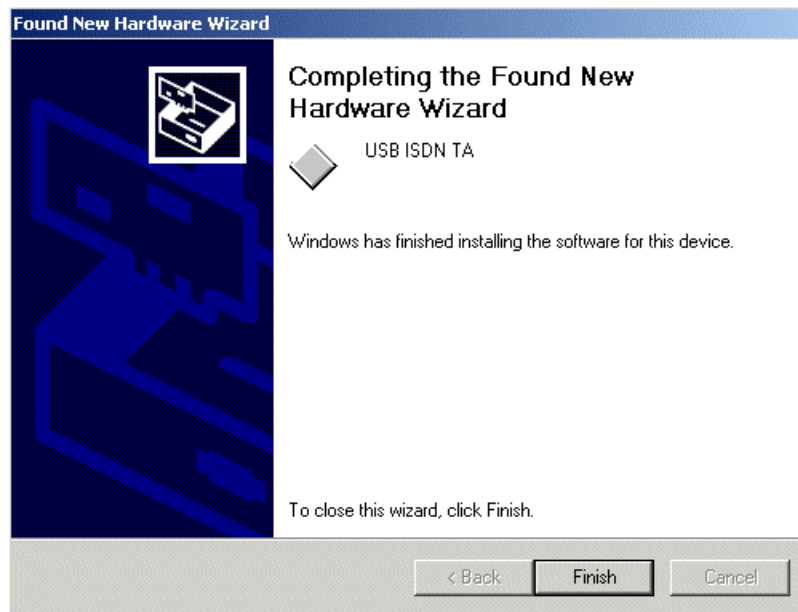
3. Insert the installation CD into the CD-ROM drive, then in the next window check “CD-ROM drives” and click “Next>”.



4. Click “Next>” to install the driver. When the following windows titled “Digital Signature Not Found” appear, press “Yes” to continue the installation.



5. Press “Finish” to end the installation.

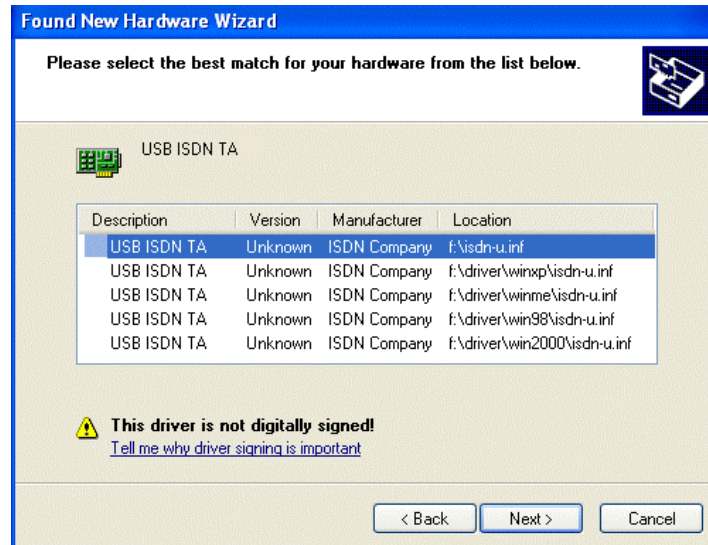


For Windows XP:

1. Start Windows. After the opening banner, Windows will tell you that the new device has been detected. Select “Install the software automatically”. Insert the installation CD into the CD-ROM drive and click “Next >”.



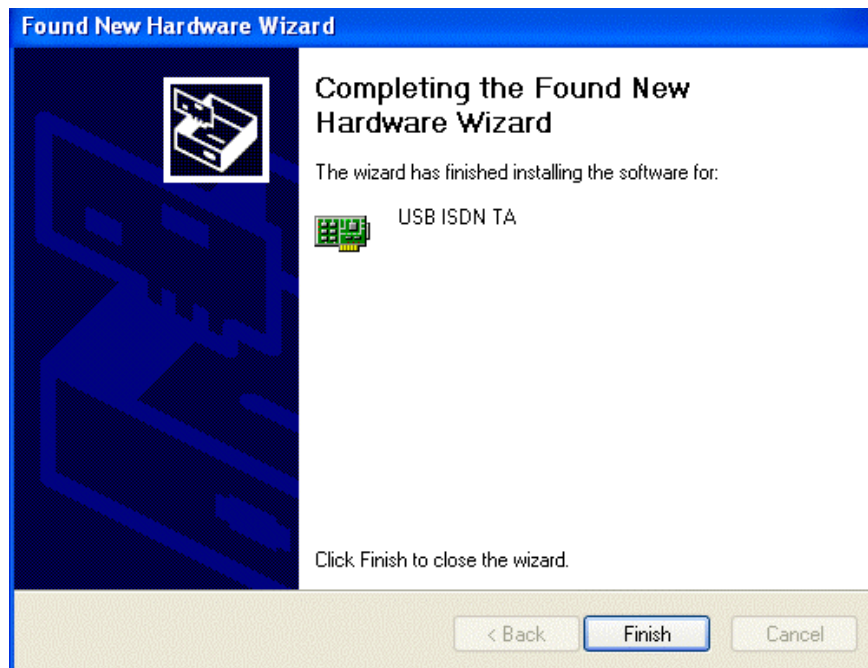
2. When next window appears, press “Next >” to continue the installation.



3. Click “Continue Anyway” when the following “Hardware Installation” windows appear.



4. Press “Finish” to end the installation.



ISDN Utility and Diagnostic Program

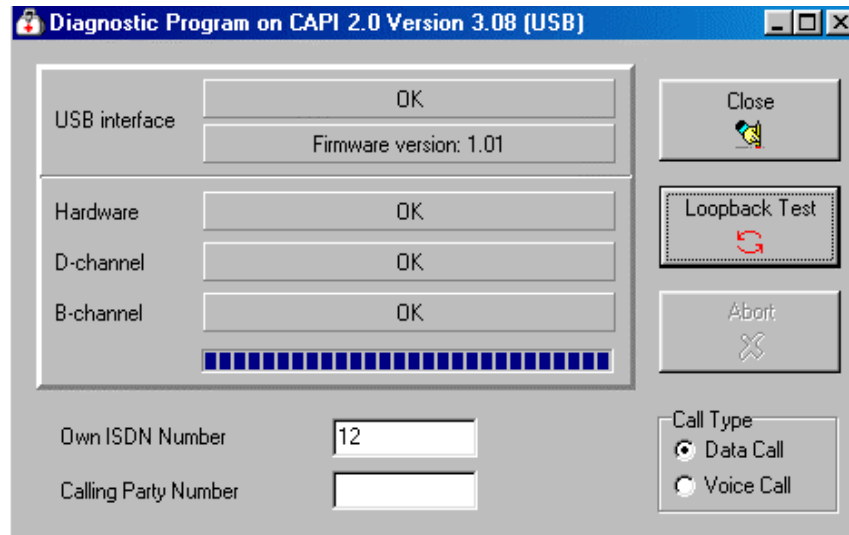
The ISDN Utility includes helpful programs for the tiny USB ISDN TA128, such as a diagnostic program, an uninstallation program, and an on-line manual.

After Windows installs the driver of your tiny USB ISDN TA128, the ISDN Utility may be installed automatically. If the ISDN Utility is not installed, you may install it from the installation CD.

You are highly recommended to run the diagnostic program to make sure the tiny USB ISDN TA128, its drivers and the ISDN line are all properly installed and connected. Please follow these instructions:

1. Open the “Programs” folder on the “Start” menu and click on the “ISDN Utility” program folder.
2. Click on the “Diagnostic Program” item to start the program.
3. In the “Own ISDN Number” box, type in the subscriber number of your ISDN line.

4. Press “Loopback Test” to begin the diagnostic procedure. It will make a call from the B1 channel that returns through the B2 channel. The D and B channels will be tested for line integrity.



Uninstalling the tiny USB ISDN TA128

If you decide to permanently remove the driver and utility of the tiny USB ISDN TA128 from your system, you must run the uninstallation program from the ISDN Utility program group as follows:

1. Click “Start”, “Programs” and click the “ISDN Utility” item.
2. Click the “Uninstall DRV & UTL” item. The following ISDN Uninstallation Program window opens.



3. Check the items that you want to completely remove from the Windows system and click “OK”.

Free Manuals Download Website

<http://myh66.com>

<http://usermanuals.us>

<http://www.somanuals.com>

<http://www.4manuals.cc>

<http://www.manual-lib.com>

<http://www.404manual.com>

<http://www.luxmanual.com>

<http://aubethermostatmanual.com>

Golf course search by state

<http://golfingnear.com>

Email search by domain

<http://emailbydomain.com>

Auto manuals search

<http://auto.somanuals.com>

TV manuals search

<http://tv.somanuals.com>