

# TTSE110 | Windshield, Dashboard, & Vent Mount for TomTom Start™ & Ease™



## Package Contents:

- (1) GN014-SBH Travelmount® Mini windshield suction pedestal
- (1) GN047-SBH - Removable air vent mount with dual-T swivel ball head
- (1) APTTSE - Dual-T to TomTom Start™ & Ease™ Adapter plate
- (1) AP013 Self-Adhesive dashboard or console pedestal mounting disc
- (1) Alcohol cleaning pad

## Compatible with:

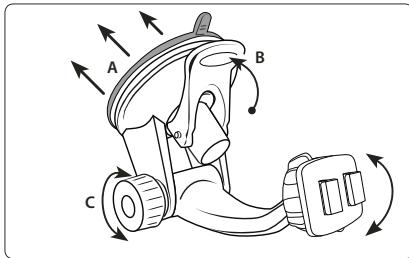
- TomTom Start™ and TomTom Ease™

TomTom, Start and Ease are product names, trademarks, or registered trademarks of TomTom International b.v. Arkon Resources, Inc. is not affiliated with TomTom International b.v.

## Installation Instructions

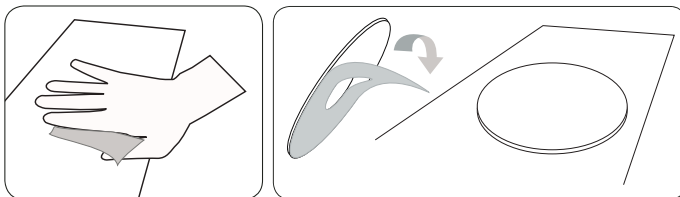
### Windshield Mounting

- Step 1. Find a safe location on the interior of the vehicle's windshield to mount the pedestal. Firmly push the suction base (A) against the windshield and flip the base lever down (B) to the locked position. See diagram below.
- Step 2. Adjust the angle of the pedestal arm by tightening the angle adjustment knob (C) at the base to the desired angle.

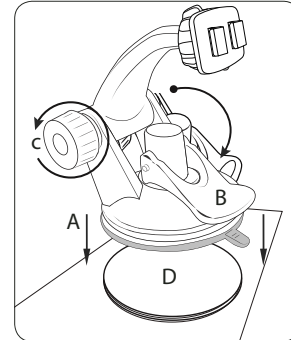


### Dashboard or Console Mounting Instructions

- Step 1. Choose a suitable location for disc (and pedestal) installation. **Do not place mount in or near an air bag deployment zone or where it will obstruct view of the road or hinder vehicle operation.**
- Step 2. Clean the dashboard or console surface area thoroughly with the included alcohol pad. Allow the area dry before applying the mounting disc.



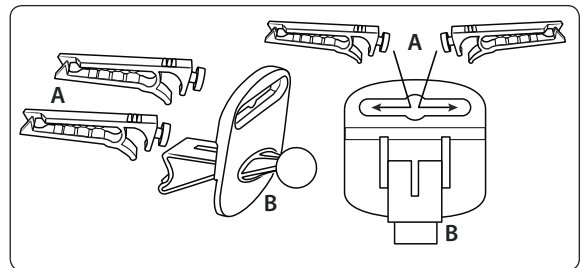
- Step 3. Remove the paper backing of the disc and place on the cleaned surface. Press the top of the disc down firmly to allow the adhesive to stick to the surface. Allow 24 hours for the adhesive to cure to the surface before applying any pressure.
- Step 4. Place the suction cup of the pedestal firmly down on the center of the mounting disc and lower the securing lever.



- Step 6. Push the pedestal suction cup (A) down onto the disk (D). Flip the lever (B) down to secure the suction cup. Adjust the angle of the arm by loosening the adjustment knob (C).

### Air Vent Mount Assembly

- Step 1. Attach the vent mounting clips (A) to the back of the pedestal (B) with the vent clips positioned with the flat sides facing up.



Continued on next page...

**!** Do not place mount in or near an air bag deployment zone or where it will obstruct view of the road.

### ! Safety Precautions

Follow all manufacturer safety guidelines for operating your device. Failure to practice safe usage of GPS device while driving may result in damage, injury, or death.

Arkon is not responsible for any damages caused to your car, your device, or yourself due to the installation or use of this pedestal mount.

**ARKON®**  
RESOURCES INC.

The Mobile Mounting Specialists™

Consumer Hotline:

USA (800) 841-0884

INT'L (626) 254-9005

Monday - Friday 9 am - 5 pm, PST

[www.arkon.com](http://www.arkon.com)

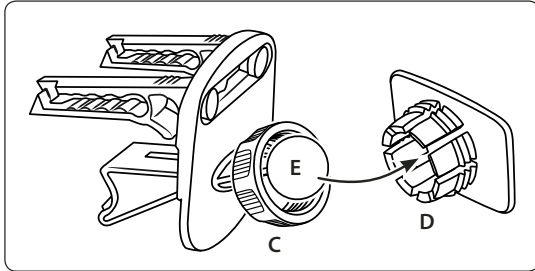
Arcadia, CA 91006 USA

Designed in USA | Made in China

© Copyright 2010 Arkon Resources, Inc.

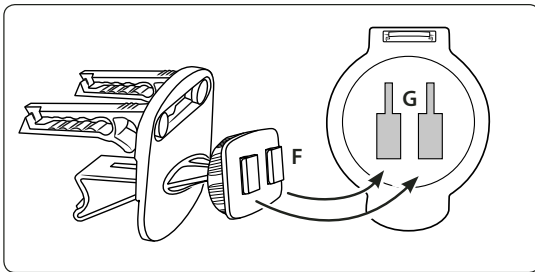
**Swivel Ball Head Assembly Attachment**

Step 2. Slip the tightening ring (C) over the air vent mount ball. Snap the dual-T head adapter plate (D) on to the mounting ball (E). Screw the tightening ring over the adapter plate until securely holding the plate. Swivel to adjust the angle of the dual-T head.



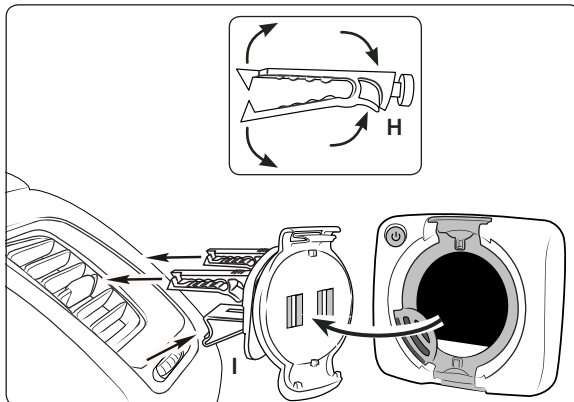
**Attach APTTSE to Air Vent Pedestal**

Step 3. Attach your TomTom device (not included, sold separately) to the dual-T head by inserting the dual-T tabs (F) into the dual-T slots (G) on the back of the device.



**Insertion of Mount Assembly into Air Vent**

Step 4. Pinch the vent mounting clips (H) so that the teeth open and gently insert vent pedestal into vent louvres until the mounting clips are attached to the fin/blade of the vent. Adjust the support leg (I) vertically until it rests firmly along the bottom of the vent or dash surface below the vent.



*Continued on next column...*

**Attaching a TomTom Device to Pedestal**

Step 5. While holding the mounted TomTom adapter plate, gently insert the TomTom device (not included, sold separately) into the adapter plate until an audible click is heard.

**! Safety Precautions**

Follow all manufacturer safety guidelines for operating your device. Failure to practice safe usage of GPS device while driving may result in damage, injury, or death.

Arkon is not responsible for any damages caused to your car, your device, or yourself due to the installation or use of this pedestal mount.

**ARKON®**  
RESOURCES INC. *The Mobile Mounting Specialists™*

Consumer Hotline:

USA (800) 841-0884

INT'L (626) 254-9005

Monday - Friday 9am - 5 pm, PST

[www.arkon.com](http://www.arkon.com)

Arcadia, CA 91006 USA

Designed in USA | Made in China

© Copyright 2010 Arkon Resources, Inc.

## Free Manuals Download Website

<http://myh66.com>

<http://usermanuals.us>

<http://www.somanuals.com>

<http://www.4manuals.cc>

<http://www.manual-lib.com>

<http://www.404manual.com>

<http://www.luxmanual.com>

<http://aubethermostatmanual.com>

Golf course search by state

<http://golfingnear.com>

Email search by domain

<http://emailbydomain.com>

Auto manuals search

<http://auto.somanuals.com>

TV manuals search

<http://tv.somanuals.com>