



Earn BISSELL Rewards!

Register your product today!
See details on back page

PEThair ERASER®

Cordless Hand Vacuum 

USER'S GUIDE
94V5 SERIES

- 2 Thank You
- 3 Safety Instructions
- 4 Product View
- 5 Assembly
- 6 Operations
- 6-8 Maintenance and Care
- 9 Troubleshooting
- 10 Replacement Parts
- 11 Warranty
- 12 Product Registration
- 12 Consumer Services



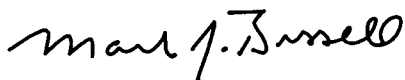
Thanks for buying a BISSELL Pet Hair Eraser® Cordless Hand Vacuum

We're glad you purchased a BISSELL vacuum. Everything we know about floor care went into the design and construction of this complete, high-tech home cleaning system.

Your BISSELL vacuum is well made, and we back it with a limited one year warranty. We also stand behind it with a knowledgeable, dedicated Consumer Services department, so, should you ever have a problem, you'll receive fast, considerate assistance.

My great-grandfather invented the floor sweeper in 1876. Today, BISSELL is a global leader in the design, manufacture, and service of high quality homecare products like your BISSELL vacuum.

Thanks again, from all of us at BISSELL.



Mark J. Bissell
Chairman, President & CEO

IMPORTANT SAFETY INSTRUCTIONS

When using an electrical appliance, basic precautions should be observed, including the following:

READ ALL INSTRUCTIONS BEFORE USING YOUR VACUUM.

WARNING: To reduce the risk of fire, electric shock, or injury:

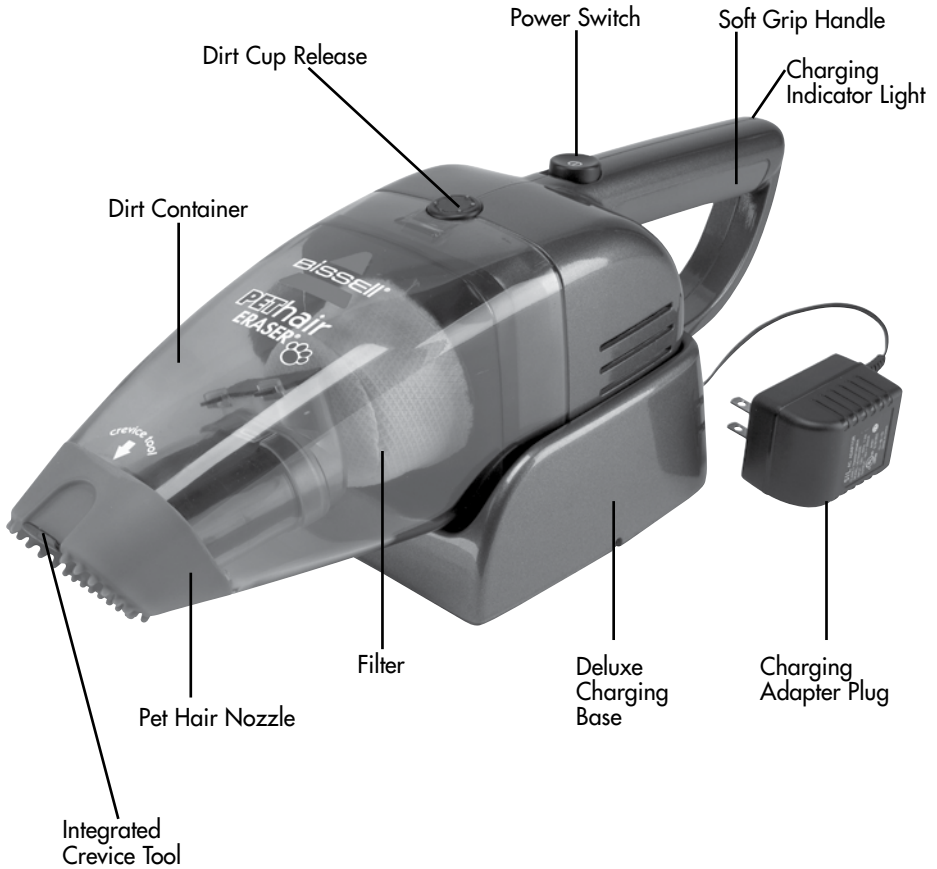
- Do not use outdoors or on wet surfaces.
- Do not allow to be used as a toy.
- Close attention is necessary when used by or near children.
- Do not use for any purpose other than described in this User's Guide.
- Use only manufacturer's recommended attachments.
- Do not use with damaged cord or plug.
- If appliance is not working as it should, has been dropped, damaged, left outdoors, or dropped into water, have it repaired at an authorized service center.
- Do not pull or carry by cord, use cord as a handle, close a door on cord, or pull cord around sharp edges or corners. Do not run appliance over cord. Keep cord away from heated surfaces.
- Do not unplug by pulling on cord. To unplug, grasp the plug, not the cord.
- Do not handle charger, including charger plug and charger terminal with wet hands.
- Do not charge the unit outdoors.
- Use only the charger supplied by the manufacturer to recharge.
- Do not incinerate the appliance even if it severely damaged. The batteries can explode in a fire.
- Do not put any object into opening.
- Do not use with any opening blocked.
- Keep openings free of dust, lint, hair and anything that may reduce airflow.

- Keep hair, loose clothing, fingers, and all parts of body away from openings and moving parts.
- Use extra care when cleaning stairs.
- Do not pick up flammable or combustible liquids. (lighter fluid, gasoline, kerosene, etc.) or use in areas where they may be present.
- Do not pick up toxic material (chlorine bleach, ammonia, drain cleaner, etc.).
- Do not use vacuum cleaner in an enclosed space filled with vapors given off by oil base paint, paint thinner, some moth proofing substances, flammable dust, or other explosive or toxic vapors.
- Do not pick up hard or sharp objects such as glass, nails, screws, coins, etc.
- Do not pick up anything that is burning or smoking, such as cigarettes, matches, or hot ashes.
- Do not use without dust cup or filters in place.
- Use only on dry, indoor surfaces.

SAVE THESE INSTRUCTIONS FOR FUTURE USE

This model is for household use only.

Product view



CAUTION:

Do not plug in your vacuum cleaner until you are familiar with all instructions and operating procedures.

Assembly

Deluxe charging base

The included charging base can be mounted on the wall or sit on a table top.

Mounting on wall (optional)

1. Select an area close to a wall outlet and make sure the wall area is free from any hidden electrical wires, water pipes and gas lines.

NOTE: Do not mount near direct sunlight, near a heat source or outdoors.

2. Select an appropriate drill type for the material to be drilled.
3. Carefully measure and mark the location of the screw holes and then drill holes and screw the wall mounting base onto the wall.



3.



Charging

*****IMPORTANT*****

ALWAYS TURN UNIT OFF PRIOR TO CHARGING*

***failing to do so may result in battery not fully charging**

1. In order for the unit to charge, the hand vac must be securely in the charging base, with the charging contacts fully engaged.
2. Plug the charging base adaptor into the wall outlet. The red indicator light will illuminate and remain on when plugged into wall outlet. Charge the unit completely for 24 hours prior to first use.

NOTE: The adaptor may become warm during charging – this is normal.

3. When the unit is fully discharged, approximately 16 hours of charging time is required for the battery to regain full capacity.



1.

Operations

Power switch

The power switch is located on the top of the handle

Using your hand vacuum

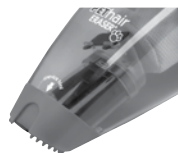
1. Remove unit from the charging base.
2. Slide switch forward to turn unit ON (I), slide back to turn OFF (O).



Power Switch

Rubber Pet Nozzle

The rubberized nozzle is designed to attract and pull pet hair and dirt from upholstery and carpet.



Integrated Crevice Tool

For hard to reach messes use the integrated crevice tool. To access crevice tool, pull on tab indicated by arrow on front of hand vac nozzle. Listen for click to know crevice tool is ready to use. When finished cleaning, simply push crevice tool back into unit.



Maintenance and care

To maintain maximum cleaning performance, the following maintenance steps must be performed:

Emptying the dirt cup

Dirt cup should be emptied before debris reaches the FULL line on cup.

1. Turn power OFF (O).
2. Hold the hand vacuum vertically and depress release button on the front to release dirt container.
3. Gently pull dirt container away from the hand vacuum grip and remove the filter. Empty dirt into waste container.
4. Replace filter back into the dirt container and attach dirt container to hand vacuum until it snaps securely into place.



Maintenance and care

Cleaning or Replacing the filter

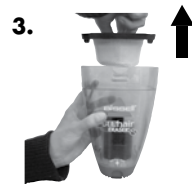
The key to maximum performance is having a clean filter. Cleaning the filter after each use will help your vacuum operate at peak efficiency.

Use only genuine BISSELL model number 52H6 replacement filters in your BISSELL vacuum. To purchase visit WWW.BISSELL.COM or call 1-800-237-7691.

To clean filter:

1. Turn power OFF (O).
2. Remove the dirt container as directed in "Emptying the dirt cup" on page 6.
3. Remove filter and tap firmly against the inside of a waste container, removing any visible dirt.
4. Replace filter back into the dirt container and attach dirt container to hand vacuum until it snaps securely in place.

NOTE: After heavy usage, you may clean the filter by washing it gently by hand in warm water and mild dish detergent. Rinse thoroughly and make certain it is completely dry before replacing it.



Nozzle Maintenance

Keep nozzle clean and free of debris by wiping with clean, damp cloth.

Maintenance and care

Disposal of batteries



WARNING:

This product contains Nickel Metal Hydride (Ni-MH) rechargeable batteries. According to Federal and State regulations, removal and proper disposal of Ni-MH batteries is required. For removal of the batteries in your Pet Hair Eraser see instructions below.



If your Pet Hair Eraser Hand Vac is to be disposed of, the batteries should be removed and disposed of properly.

1. IMPORTANT:

Remove from charging base and fully discharge hand vacuum.

2. Remove dirt container from handle.

3. Remove (6) Phillips head screws on the handle and cover.

4. Separate left and right cover.

5. Remove the entire battery assembly from the cover.

6. Remove (3) Phillips head screws between the motor and battery bracket.

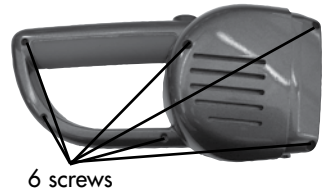
7. Pull the motor, PCB, fuse, and inner wire through the middle of the battery bracket, separating the battery bracket and both batteries from the motor, PCB, and inner wire.

8. Cut wires from the PCB and fuse to the battery bracket.

9. Keep Battery Pack together – **DO NOT** separate individual batteries. For specific disposal instructions of batteries, please contact RBRC (Rechargeable Battery Recycling Corporation)
1-800-822-8837
or visit www.rbrc.com.

10. Discard remainder of product
CAUTION: Disconnecting the battery will destroy the appliance and void the warranty.

3.



6 screws

Troubleshooting

Vacuum won't turn on

Possible causes

1. Battery is fully discharged

Remedies

1. Charge battery. Follow charging battery instructions on page 5

Vacuum cleaner has low suction

Possible causes

1. Dirt container is full
2. Dirt container is not installed properly
3. Filters need cleaning
4. Filters need replacing
5. Battery needs charging

Remedies

1. Empty dirt container
2. Position container correctly and snap firmly into place
3. Follow filter instructions on page 7
4. Visit www.bissell.com or call 1-800-237-7691 to order replacement filters.
5. Charge battery. Follow charging battery instructions on page 5

Visible dirt escaping from vacuum

Possible causes

1. Dirt container is full of debris
2. Filter is missing or installed incorrectly

Remedies

1. Empty dirt container
2. Check filter for correct installation

Other maintenance or service not included in the manual should be performed by an authorized service representative.

Thank you for selecting a BISSELL product.

Please do not return this product to the store.

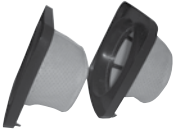
For any questions or concerns, BISSELL is happy to be of service. Contact us directly at 1-800-237-7691.

Replacement parts - BISSELL Pet Hair Eraser®

You may purchase parts by calling BISSELL Consumer Services or by visiting our website. Below is a list of common replacement parts.

Item	Part No.	Part Name
1	52H6	Filter assembly – set of 2
2	2031622	Charging base
3	2031624	Dirt cup assembly

1



2



3



Warranty - BISSELL Pet Hair Eraser® Cordless Hand Vacuum

This warranty gives you specific legal rights, and you may also have other rights which may vary from state to state. If you need additional instruction regarding this warranty or have questions regarding what it may cover, please contact BISSELL Consumer Services by E-mail, telephone, or regular mail as described below.

Limited One Year Warranty

Subject to the *EXCEPTIONS AND EXCLUSIONS identified below, upon receipt of the product BISSELL Homecare, Inc. will repair or replace (with new or remanufactured components or products), at BISSELL's option, free of charge from the date of purchase by the original purchaser, for one year any defective or malfunctioning part.

See information below on "If your BISSELL product should require service".

This warranty applies to product used for personal, and not commercial or rental service. This warranty does not apply to fans or routine maintenance components such as filters, belts, or brushes. Damage or malfunction caused by negligence, abuse, neglect, unauthorized repair, or any other use not in accordance with the User's Guide is not covered.

If your BISSELL product should require service:

Contact BISSELL Consumer Services to locate a BISSELL Authorized Service Center in your area.

If you need information about repairs or replacement parts, or if you have questions about your warranty, contact BISSELL Consumer Services.

Website or E-mail:

www.bissell.com

Use the "Customer Support" tab.

Or Call:

BISSELL Consumer Services

1-800-237-7691

Monday - Friday 8 a.m. - 10 p.m. ET

Saturday 9 a.m. - 8 p.m. ET

Or Write:

BISSELL Homecare, Inc.

PO Box 3606

Grand Rapids, MI 49501

ATTN: Consumer Services

BISSELL HOMECARE, INC. IS NOT LIABLE FOR INCIDENTAL OR CONSEQUENTIAL DAMAGES OF ANY NATURE ASSOCIATED WITH THE USE OF THIS PRODUCT. BISSELL'S LIABILITY WILL NOT EXCEED THE PURCHASE PRICE OF THE PRODUCT.

Some states do not allow the exclusion or limitation of incidental or consequential damages, so the above limitation or exclusion may not apply to you.

***EXCEPTIONS AND EXCLUSIONS FROM THE TERMS OF THE LIMITED WARRANTY**
THIS WARRANTY IS EXCLUSIVE AND IN LIEU OF ANY OTHER WARRANTIES EITHER ORAL OR WRITTEN. ANY IMPLIED WARRANTIES WHICH MAY ARISE BY OPERATION OF LAW, INCLUDING THE IMPLIED WARRANTIES OF MERCHANTABILITY AND FITNESS FOR A PARTICULAR PURPOSE, ARE LIMITED TO THE ONE YEAR DURATION FROM THE DATE OF PURCHASE AS DESCRIBED ABOVE.

Some states do not allow limitations on how long an implied warranty last so the above limitation may not apply to you.



Don't forget to register your product!

Registering is quick, easy and offers you benefits over the lifetime of your product. You'll receive:

BISSELL Rewards Points

Automatically earn points for discounts and free shipping on future purchases.

Faster Service

Supplying your information now saves you time should you need to contact us with questions regarding your product.

Product Support Reminders and Alerts

We'll contact you with any important product maintenance reminders and alerts.

Special Promotions

Optional: Register your email to receive notice of offers, contests, cleaning tips and more!

Visit www.bissell.com/registration now!



BISSELL consumer services

For information about repairs or replacement parts, or questions about your warranty, call:

BISSELL Consumer Services
1-800-237-7691

Monday - Friday 8 a.m. — 10 p.m. ET

Saturday 9 a.m. — 8 p.m. ET

Or write:

BISSELL Homecare, Inc.

PO Box 3606

Grand Rapids MI 49501

ATTN: Consumer Services

Or visit the BISSELL website - **www.bissell.com**

When contacting BISSELL, have model number of cleaner available.

Please record your Model Number: _____

Please record your Purchase Date: _____

NOTE: Please keep your original sales receipt. It provides proof of purchase date in the event of a warranty claim. See Warranty on page 11 for details.



©2011 BISSELL Homecare, Inc
Grand Rapids, Michigan
All rights reserved. Printed in China
Part Number 110-4328
Rev 03/11
Visit our website at:
www.bissell.com



Free Manuals Download Website

<http://myh66.com>

<http://usermanuals.us>

<http://www.somanuals.com>

<http://www.4manuals.cc>

<http://www.manual-lib.com>

<http://www.404manual.com>

<http://www.luxmanual.com>

<http://aubethermostatmanual.com>

Golf course search by state

<http://golfingnear.com>

Email search by domain

<http://emailbydomain.com>

Auto manuals search

<http://auto.somanuals.com>

TV manuals search

<http://tv.somanuals.com>