

CHICAGO
Electric Power Tools
Lithium Ion
12V 3/8" LITHIUM-ION CORDLESS
DRILL/DRIVER

Model 67089

SET UP AND OPERATING INSTRUCTIONS



Distributed exclusively by Harbor Freight Tools®.

3491 Mission Oaks Blvd., Camarillo, CA 93011

Visit our website at: <http://www.harborfreight.com>



Read this material before using this product.
Failure to do so can result in serious injury.
SAVE THIS MANUAL.

Copyright© 2009 by Harbor Freight Tools®. All rights reserved. No portion of this manual or any artwork contained herein may be reproduced in any shape or form without the express written consent of Harbor Freight Tools. Diagrams within this manual may not be drawn proportionally. Due to continuing improvements, actual product may differ slightly from the product described herein. Tools required for assembly and service may not be included.

For technical questions or replacement parts, please call 1-800-444-3353.

SAVE THIS MANUAL

Keep this manual for the safety warnings and precautions, assembly, operating, inspection, maintenance and cleaning procedures. Write the product's serial number in the back of the manual near the assembly diagram (or month and year of purchase if product has no number). Keep this manual and the receipt in a safe and dry place for future reference.

IMPORTANT SAFETY INFORMATION

In this manual, on the labeling, and all other information provided with this product:



This is the safety alert symbol. It is used to alert you to potential personal injury hazards. Obey all safety messages that follow this symbol to avoid possible injury or death.

DANGER

DANGER indicates a hazardous situation which, if not avoided, will result in death or serious injury.

WARNING

WARNING indicates a hazardous situation which, if not avoided, could result in death or serious injury.

CAUTION

CAUTION, used with the safety alert symbol, indicates a hazardous situation which, if not avoided, could result in minor or moderate injury.

NOTICE

NOTICE is used to address practices not related to personal injury.


CAUTION

CAUTION, without the safety alert symbol, is used to address practices not related to personal injury.

General Safety Warnings



WARNING Read all safety warnings and instructions. Failure to follow the warnings and instructions may result in electric shock, fire and/or serious injury. Save all warnings and instructions for future reference. The term "power tool" in the warnings refers to your line-operated (corded) power tool.

-  **Keep Battery Pack (38) Dry.** Do not open, drop, short-circuit, incinerate or expose to temperatures greater than 140°F.
- Charge Battery Pack only according to the instructions indicated in this manual.
- Inspect Battery Pack before every use; do not use or charge if damaged.
- Work area safety**
 - Keep work area clean and well lit.** Cluttered or dark areas invite accidents.
 - Do not operate power tools in explosive atmospheres, such as in the presence of flammable liquids, gases or dust.** Power tools create

sparks which may ignite the dust or fumes.

- c. **Keep children and bystanders away while operating a power tool.** *Distractions can cause you to lose control.*
5. **Electrical safety**
 - a. **Power tool Plugs must match the outlet. Never modify the Plug in any way. Do not use any adapter plugs with grounded power tools.** *Unmodified plugs and matching outlets will reduce risk of electric shock.*
 - b. **Avoid body contact with grounded surfaces such as pipes, radiators, ranges and refrigerators.** *There is an increased risk of electric shock if your body is grounded.*
 - c. **Do not expose power tools to rain or wet conditions.** *Water entering a power tool will increase the risk of electric shock.*
 - d. **Do not abuse the Power Cord. Never use the Cord for carrying, pulling or unplugging the power tool. Keep Cord away from heat, oil, sharp edges or moving parts.** *Damaged or entangled cords increase the risk of electric shock.*
 - e. **When operating a power tool outdoors, use an extension cord suitable for outdoor use.** *Use of a cord suitable for outdoor use reduces the risk of electric shock.*
 - f. **If operating a power tool in a damp location is unavoidable, use a Ground Fault Circuit Interrupter (GFCI) protected supply.** *Use of a GFCI reduces the risk of electric shock.*
 6. **Personal safety**
 - a. **Stay alert, watch what you are doing and use common sense when operating a power tool. Do not use a power tool while you are tired or under the influence of drugs, alcohol or medication.** *A moment of inattention while operating power tools may result in serious personal injury.*
 - b. **Use personal protective equipment. Always wear ANSI-approved safety goggles.** *Safety equipment such as NIOSH-approved dust mask/respirator, NIOSH-approved hearing protection, and heavy duty work gloves will reduce personal injuries.*
 - c. **Prevent unintentional starting. Ensure the Power Switch is in the off-position before connecting to the power source or picking up or carrying the tool.** *Carrying power tools with your finger on the Power Switch invites accidents.*
 - d. **Remove any adjusting key or wrench before turning the power tool on.** *A wrench or a key left attached to an oscillating part of the power tool may result in personal injury.*
 - e. **Do not overreach. Keep proper footing and balance at all times.** *This enables better control of the power tool in unexpected situations.*
 - f. **Dress properly. Do not wear loose clothing or jewelry. Keep your hair, clothing and gloves away from moving parts.** *Loose clothes, jewelry or long hair can be caught in moving parts.*

7. Power tool use and care

- a. **Do not force the power tool. Use the correct power tool for your application.** *The correct power tool will do the job better and safer at the rate for which it was designed.*
- b. **Do not use the power tool if the Power Switch does not turn it on and off.** *Any power tool that cannot be controlled with the Switch is dangerous and must be repaired.*
- c. **Disconnect the Power Cord from the power source before making any adjustments, changing accessories, or storing the power tool.** *Such preventive safety measures reduce the risk of starting the power tool accidentally.*
- d. **Store idle power tools out of the reach of children and do not allow persons unfamiliar with the power tool or these instructions to operate the power tool.** *Power tools are dangerous in the hands of untrained users.*
- e. **Maintain power tools. Check for misalignment or binding of moving parts, breakage of parts and any other condition that may affect the power tool's operation. If damaged, have the power tool repaired before use.** *Many accidents are caused by poorly maintained power tools.*
- f. **Keep cutting accessories sharp and clean.** *Properly maintained cutting accessories with sharp cutting edges are less likely to bind and are easier to control.*
- g. **Use the power tool and its accessories in accordance with these instructions, taking into account the working conditions and the**

work to be performed. *Use of the power tool for operations different from those intended could result in a hazardous situation.*

8. Service

- a. **Have your power tool serviced by a qualified repair person using only identical replacement parts.** *This will ensure that the safety of the power tool is maintained.*

Specific Safety Warnings

1. Maintain labels and nameplates on the power tool. These carry important safety information. If unreadable or missing, contact Harbor Freight Tools for a replacement.
2. Read and adhere to the instruction manual of the included 67104 Battery Charger (49) for important safety warnings and instructions on how to properly operate the Lithium Battery Charger.
3. Read and adhere to the safety warnings for the included 67120 Lithium Battery Pack (38).
4. Do not use this Drill Driver Tool with any other Battery or Charger.
5. **Hold power tools by insulated gripping surfaces when performing an operation where the tool may contact hidden wiring.** *Contact with a "live" wire will make exposed metal parts of the tool "live" and shock the operator.*
6. Maintain labels and nameplates on the tool. These carry important safety information. If unreadable or missing, contact Harbor Freight Tools for a replacement.

7. Avoid unintentional starting. Prepare to begin work before turning on the tool.
8. Do not lay the tool down until it has come to a complete stop. Moving parts can grab the surface and pull the tool out of your control.
9. When using a handheld power tool, maintain a firm grip on the tool with both hands to resist starting torque.
10. Do not leave the tool unattended when it is plugged into an electrical outlet. Turn off the tool, and unplug it from its electrical outlet before leaving.
11. This product is not a toy. Keep it out of reach of children.
12. People with pacemakers should consult their physician(s) before use. Electromagnetic fields in close proximity to heart pacemaker could cause pacemaker interference or pacemaker failure. In addition, people with pacemakers should:
 - Avoid operating alone.
 - Do not use with power switch locked on.
 - Properly maintain and inspect to avoid electrical shock.
 - Any power cord must be properly grounded. Ground Fault Circuit Interrupter (GFCI) should also be implemented – it prevents sustained electrical shock.
13. Some dust created by power sanding, sawing, grinding, drilling, and other construction activities, contains chemicals known [to the State of California] to cause cancer, birth defects or other reproductive harm. Some examples of these chemicals are:
 - Lead from lead-based paints
 - Crystalline silica from bricks and cement or other masonry products
 - Arsenic and chromium from chemically treated lumber
 Your risk from these exposures varies, depending on how often you do this type of work. To reduce your exposure to these chemicals: work in a well ventilated area, and work with approved safety equipment, such as those dust masks that are specially designed to filter out microscopic particles. (California Health & Safety Code § 25249.5, *et seq.*)
14. **WARNING:** Handling the cord on this product will expose you to lead, a chemical known to the State of California to cause cancer, and birth defects or other reproductive harm. Wash hands after handling. (California Health & Safety Code § 25249.5, *et seq.*)
15. The warnings, precautions, and instructions discussed in this instruction manual cannot cover all possible conditions and situations that may occur. It must be understood by the operator that common sense and caution are factors which cannot be built into this product, but must be supplied by the operator.

Vibration Safety

This power tool vibrates during use. Repeated or long-term exposure to vibration may cause temporary or permanent physical injury, particularly to the hands, arms and shoulders. To reduce the risk of vibration-related injury:

1. Anyone using vibrating power tools regularly or for an extended period should first be examined by a doctor and then have regular medical check-ups to ensure medical problems are not being caused or worsened from use. Pregnant women or people who have impaired blood circulation to the hand, past hand injuries, nervous system disorders, diabetes, or Raynaud's Disease should not use this tool. If you feel any medical or physical symptoms related to vibration (such as tingling, numbness, and white or blue fingers), seek medical advice as soon as possible.
2. Do not smoke during use. Nicotine reduces the blood supply to the hands and fingers, increasing the risk of vibration-related injury.
3. Wear suitable gloves to reduce the vibration effects on the user.
4. Use power tools with the lowest vibration when there is a choice between different processes.
5. Include vibration-free periods each day of work.
6. Grip the power tool as lightly as possible (while still keeping safe control of it). Let the tool do the work.
7. To reduce vibration, maintain the power tool as explained in this manual. If any abnormal vibration occurs, stop use immediately.



SAVE THESE INSTRUCTIONS.

SPECIFICATIONS

Drill Speeds	Variable; 0 - 500 RPM Forward/Reverse
Chuck Type	3/8" Keyless
Torque Settings	23 Screwdriver Settings + One Drill Setting
Trigger Settings	Forward/Reverse
Included	Charger (67104) Battery (67120)

UNPACKING

When unpacking, make sure that the item is intact and undamaged. If any parts are missing or broken, please call Harbor Freight Tools at the number shown on the cover of this manual as soon as possible.

INSTRUCTIONS FOR PUTTING INTO USE



Read the **ENTIRE IMPORTANT SAFETY INFORMATION** section at the beginning of this manual including all text under subheadings therein before set up or use of this product.

WARNING

TO PREVENT SERIOUS INJURY

FROM ACCIDENTAL OPERATION:

Turn the Forward/Reverse Switch of the tool to its center, locked position and remove the Battery Pack (38) before assembling or making any adjustments to the tool.

Note: For additional information regarding the parts listed in the following pages, refer to the Assembly Diagram near the end of this manual.

Installing a Drill Bit

1. Remove the Battery Pack and slide Direction Switch (43) to its mid-position.
2. While holding Drill/Driver and the Chuck sleeve (adjacent to the frame) in one hand, turn the Chuck (26) counterclockwise to open the jaws.
3. Insert the bit or a Hex bit/Driver-Drill bit into the jaws and turn the Chuck clockwise until secure.

OPERATING INSTRUCTIONS




Read the **ENTIRE IMPORTANT SAFETY INFORMATION** section at the beginning of this manual including all text under subheadings therein before set up or use of this product.



WARNING TO PREVENT SERIOUS INJURY FROM ACCIDENTAL OPERATION:
Turn the Direction Switch (43) of the tool to its center neutral position and remove the Battery and any attachments before performing any inspection, maintenance, or cleaning procedures.

Work Piece and Work Area Set Up

1. Designate a work area that is clean and well-lit. The work area must not allow access by children or pets to prevent injury and distraction.
2. Secure loose work pieces using a vise or clamps (not included) to prevent movement while working.

3. There must not be hazardous objects, such as utility lines or foreign objects, nearby that will present a hazard while working.
4.  **WARNING!** Verify that the surface has no hidden utility lines before drilling or driving screws.

General Operating Instructions

1. Mark the position of the hole to be drilled with a center punch to prevent the Drill from “walking”.
2. Attach the Battery to the bottom of the handle, it will click when it locks into place. **Please Note:** The Battery fits only in one position. Do not force the Pack when inserting.
3. Press the Direction Switch (43) to the desired position (Forward or Reverse). See the forward/reverse arrows on the sides of the Direction Switch.
4. When working with screws, turn the Torque Selector to any one of the first 23 torque settings. Do not change the torque setting while the drill is moving. And always start from a lower setting to prevent unnecessary force.
5. When drilling a hole, set the Selector to the “Drill” icon. Pull the Trigger to start the Drill/Driver. Allow the drill to come up to full speed, before, applying it to the work surface.
6. Hold the Drill firmly with both hands, as torque will cause the tool to twist.
7. When drilling through light gauge metal or thin, soft wood, place a wooden block behind the material to prevent burr or splinter damage when

the bit exits the workpiece. Lubricate the Drill Bit with cutting oil when drilling iron or steel. Use a coolant when drilling nonferrous metals such as copper, brass, or aluminum.

8. When the hole is drilled, remove the drill bit from the hole while the Drill is still running. This prevents the Drill Bit from getting caught in the hole and causing damage.
9. **Please Note:** The Drill/Driver has an LED light that shines on contact area. Lightly tapping on the Trigger will activate the LED light.
10. To prevent accidents, turn off the tool and disconnect its power supply after use. Clean, then store the tool indoors out of children's reach.

MAINTENANCE AND SERVICING



Procedures not specifically explained in this manual must be performed only by a qualified technician.

⚠️ WARNING

TO PREVENT SERIOUS INJURY


FROM ACCIDENTAL OPERATION: Turn Power Switch of Tool to its "OFF" position and remove Battery Pack from tool performing any inspection, maintenance, or cleaning procedures.

TO PREVENT SERIOUS INJURY FROM TOOL FAILURE: Do not use damaged equipment. If abnormal noise or vibration occurs, have the problem corrected before further use.

Cleaning, Maintenance, and Lubrication

1. **BEFORE EACH USE**, inspect the general condition of the tool. Check for loose screws, misalignment or binding of moving parts, cracked or broken parts, and any other condition that may affect its safe operation.
2. **AFTER USE**, clean external surfaces of the tool with clean cloth.
3. **⚠️ WARNING!** Do not use if either the Battery Pack or Charger are damaged in any way.

Troubleshooting

Problem	Possible Causes	Likely Solutions
Tool will not start.	Battery not charged.	Charge Battery.
Performance decreases over time.	Accessory dull or damaged.	Keep accessories sharp. Replace as needed.
Excessive noise or rattling.	Internal damage or wear.	Have technician service tool.
Tool chatters when tightening fasteners	Low Torque setting.	Select higher Torque setting.
Overheating.	<ol style="list-style-type: none"> 1. Forcing tool to work too fast. 2. Accessory dull or damaged. 3. Blocked motor housing vents. 	<ol style="list-style-type: none"> 1. Allow tool to work at its own rate. 2. Keep cutting accessories sharp. Replace as needed. 3. Wear ANSI-approved safety goggles and NIOSH-approved dust mask/respirator while blowing dust out of motor using compressed air.
 Follow all safety precautions whenever diagnosing or servicing the tool. Disconnect power supply before service.		

Record Product's Serial Number Here: _____

Note: If product has no serial number, record month and year of purchase instead.

Note: Some parts are listed and shown for illustration purposes only, and are not available individually as replacement parts.

PARTS LIST

Part	Description	Qty.
1	Self-Tapping Screw (ST3×14 Φ5.3)	1
2	Self-Tapping Screw (ST3×9 Φ5.3)	2
3	Rear Cover	1
4	Left Housing	1
5	Motor	1
6	Motor Pinion	1
7	Motor Holder	1
8	Spring Washer	2
9	Philip Pan Screw (black, M3x6)	2
10	Gear Housing Washer	1
11	Top Stair Small Gear	3
12	Central Gear	1
13	Lower Stair Small Gear	3
14	Inner Gear Sleeve	1
15	Spindle	1
16	Spindle Washer	3
17	Plastic Housing	1
18	Steel Ball 4	8
19	Pin4.0*9.6	8
20	Bear Sleeve	1
21	Steel Ball 3	15
22	Bearing Spring Circlip 12	1
23	Front Cover	1
24	Self-Tapping Screw (black, ST2.6*8)	4
25	Chuck Screw/Left Twist	1

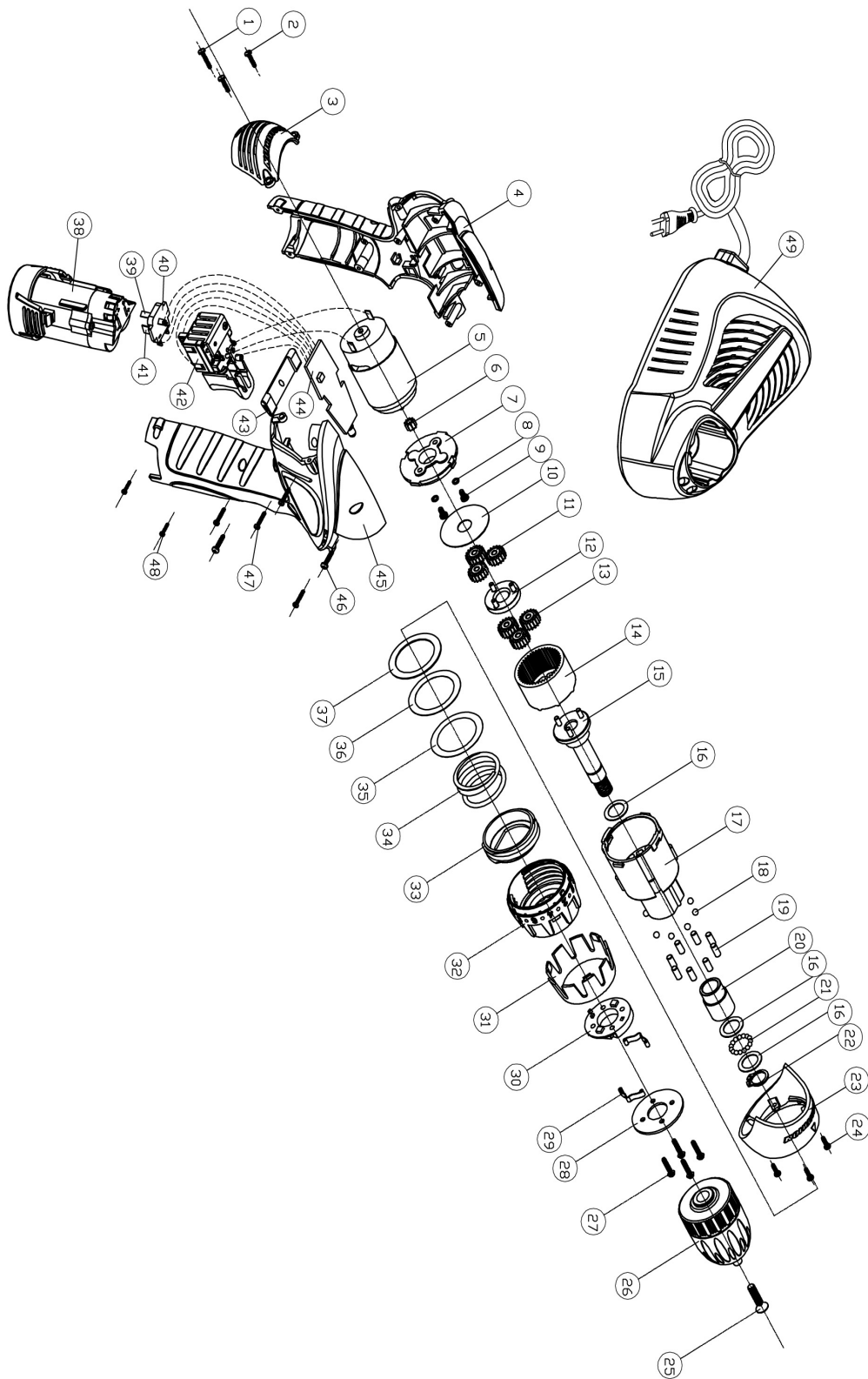
PARTS LIST

Part	Description	Qty.
26	Chuck (10mm)	1
27	Self-Tapping Screw (black, ST3×20)	4
28	Torque Clamp Plate	1
29	Torque Spring Plate	2
30	Torque Spring Plate Holder	1
31	Torque Outer Metal Sleeve	1
32	Torque Selector	1
33	Bush	1
34	Torque Control Spring	1
35	Ring Washer (40×30.5×0.15mm)	1
36	Torque Washer (40*30.5*0.3mm)	1
37	Torque Washer (40*30.5*0.8mm)	1
38	Battery Pack	1
39	T-Contact	1
40	Contact Frame	1
41	Contact	2
42	Internal Variable Switch	1
43	Direction Switch	1
44	Discharge Security Circuit Board	1
45	Right Housing	1
46	Self-Tapping Screw (black, ST2.6X14)	4
47	Self-Tapping Screw (black, ST3×14 Φ5.3)	2
48	Self-Tapping Screw (black, ST2.2*10)	2
49	Charger	1

PLEASE READ THE FOLLOWING CAREFULLY

THE MANUFACTURER AND/OR DISTRIBUTOR HAS PROVIDED THE PARTS LIST AND ASSEMBLY DIAGRAM IN THIS MANUAL AS A REFERENCE TOOL ONLY. NEITHER THE MANUFACTURER OR DISTRIBUTOR MAKES ANY REPRESENTATION OR WARRANTY OF ANY KIND TO THE BUYER THAT HE OR SHE IS QUALIFIED TO MAKE ANY REPAIRS TO THE PRODUCT, OR THAT HE OR SHE IS QUALIFIED TO REPLACE ANY PARTS OF THE PRODUCT. IN FACT, THE MANUFACTURER AND/OR DISTRIBUTOR EXPRESSLY STATES THAT ALL REPAIRS AND PARTS REPLACEMENTS SHOULD BE UNDERTAKEN BY CERTIFIED AND LICENSED TECHNICIANS, AND NOT BY THE BUYER. THE BUYER ASSUMES ALL RISK AND LIABILITY ARISING OUT OF HIS OR HER REPAIRS TO THE ORIGINAL PRODUCT OR REPLACEMENT PARTS THERETO, OR ARISING OUT OF HIS OR HER INSTALLATION OF REPLACEMENT PARTS THERETO.

ASSEMBLY DIAGRAM



LIMITED 90 DAY WARRANTY

Harbor Freight Tools Co. makes every effort to assure that its products meet high quality and durability standards, and warrants to the original purchaser that this product is free from defects in materials and workmanship for the period of 90 days from the date of purchase. This warranty does not apply to damage due directly or indirectly, to misuse, abuse, negligence or accidents, repairs or alterations outside our facilities, criminal activity, improper installation, normal wear and tear, or to lack of maintenance. We shall in no event be liable for death, injuries to persons or property, or for incidental, contingent, special or consequential damages arising from the use of our product. Some states do not allow the exclusion or limitation of incidental or consequential damages, so the above limitation of exclusion may not apply to you. THIS WARRANTY IS EXPRESSLY IN LIEU OF ALL OTHER WARRANTIES, EXPRESS OR IMPLIED, INCLUDING THE WARRANTIES OF MERCHANTABILITY AND FITNESS.

To take advantage of this warranty, the product or part must be returned to us with transportation charges prepaid. Proof of purchase date and an explanation of the complaint must accompany the merchandise. If our inspection verifies the defect, we will either repair or replace the product at our election or we may elect to refund the purchase price if we cannot readily and quickly provide you with a replacement. We will return repaired products at our expense, but if we determine there is no defect, or that the defect resulted from causes not within the scope of our warranty, then you must bear the cost of returning the product.

This warranty gives you specific legal rights and you may also have other rights which vary from state to state.

3491 Mission Oaks Blvd. • PO Box 6009 • Camarillo, CA 93011 • (800) 444-3353

Free Manuals Download Website

<http://myh66.com>

<http://usermanuals.us>

<http://www.somanuals.com>

<http://www.4manuals.cc>

<http://www.manual-lib.com>

<http://www.404manual.com>

<http://www.luxmanual.com>

<http://aubethermostatmanual.com>

Golf course search by state

<http://golfingnear.com>

Email search by domain

<http://emailbydomain.com>

Auto manuals search

<http://auto.somanuals.com>

TV manuals search

<http://tv.somanuals.com>