

INSTALLATION INSTRUCTIONS

CEILING PLATE

CMA-330 

The Ceiling Plate is designed for ease of installation with any height of drop ceiling. Using any length of standard NPT 1½" pipe threaded both on ends. You can extend the height capabilities to meet your needs

WARNING: IMPROPER INSTALLATION MAY RESULT IN SERIOUS PERSONAL INJURY!

All components must be securely fastened to a structural member capable of supporting five times the combined weight of all components plus the equipment being mounted. If it cannot support this weight, the structure **MUST** be reinforced.

The maximum weight to be installed on the column is 500 pounds (226.8 Kg).

Unpack and check contents:

- (1) Ceiling Plate
- (1) 5/16-18 Socket Set Screw
- (1) 5/32" Hex Wrench

INSTALLATION INSTRUCTIONS

1. Securely install the ceiling plate to the ceiling or ceiling joists (**NOTE: SEE WARNING!!**) Bolt hole spacing is shown on Figure 1.
1. Thread your standard NPT 1½" pipe into the coupler and tighten securely.
2. Install and securely tighten the 5/16-18 socket set screws.
3. Follow the Ceiling Mount Instructions for installation and adjustment of the projector.

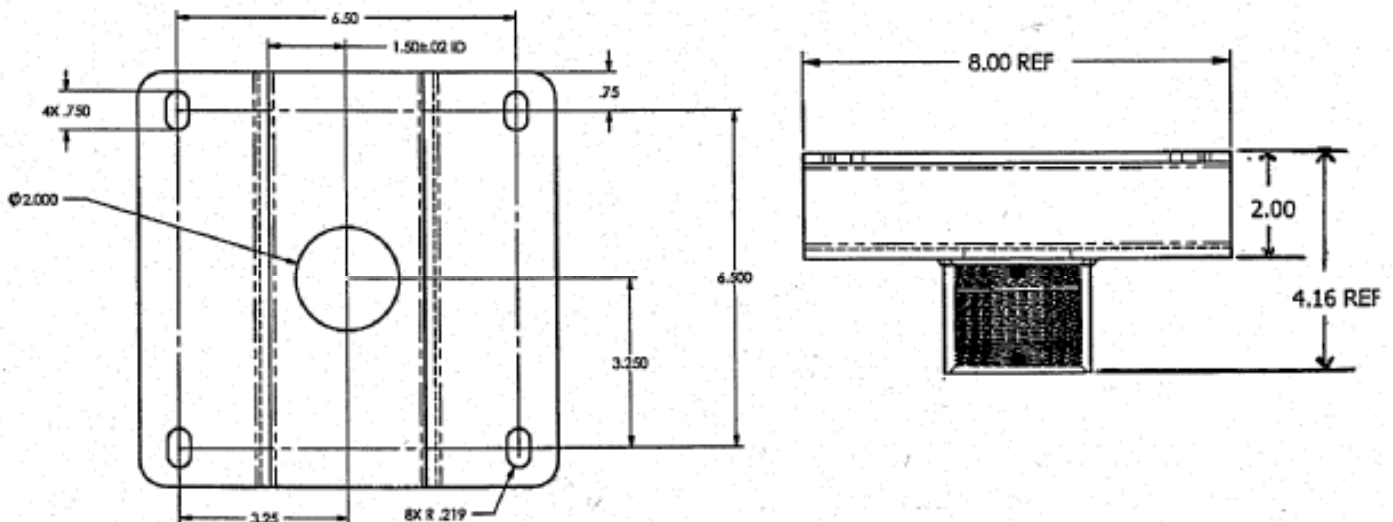


Figure 1. CMA-330 Ceiling Plate



CHIEF MANUFACTURING INC.
1-800-582-6480 952-894-6280 FAX 952-894-6918
12800 HIGHWAY 13 SOUTH, SUITE 500
SAVAGE, MINNESOTA 55378 USA

8803-000017
2003 Chief Manufacturing
www.chiefmfg.com
01/03

Free Manuals Download Website

<http://myh66.com>

<http://usermanuals.us>

<http://www.somanuals.com>

<http://www.4manuals.cc>

<http://www.manual-lib.com>

<http://www.404manual.com>

<http://www.luxmanual.com>

<http://aubethermostatmanual.com>

Golf course search by state

<http://golfingnear.com>

Email search by domain

<http://emailbydomain.com>

Auto manuals search

<http://auto.somanuals.com>

TV manuals search

<http://tv.somanuals.com>