

Amzer® Smart Keyboard



User Guide for BlackBerry® Devices

AMZER®
One Step Ahead

Copyright © 2006, Amzer, Inc.™
All rights reserved.

Manufacturer's End-User License Agreement (EULA)

This End-User License Agreement (EULA) is a legal agreement between you (either an individual or a single entity) and Amzer, Inc. for the Amzer, Inc. software product in this document, which includes computer software and may include associated media, printed materials, and online or electronic documentation. The software also includes any updates and supplements to the original software provided to you by Amzer. Any software provided along with the software that is associated with a separate end-user license agreement is licensed to you under the terms of that license agreement. By installing, copying, downloading, accessing, or otherwise using the software, you agree to be bound by the terms of this EULA.

USE

You (an entity or a person) may use the software product identified above (the "software") on ONE HANDSET within your organization.

TECHNICAL SUPPORT

The software is provided as is. Technical support is available only for registered users who have purchased the retail product or product downloads from the Internet. Technical support questions can be addressed to custserv@amzer.com.

RESTRICTIONS

Except as authorized by the user documentation, you may not merge, modify, or adapt the software in any way, including reverse engineering, disassembling, de-compiling, or attempting to enable features that are disabled. You may not loan, rent, lease, license, or otherwise transfer the software or any copy of it to any third party outside your organization.

COPYRIGHT

All intellectual property rights in the software and user documentation are owned by Amzer, Inc. or its suppliers and are protected by United States, Canadian, and international copyright laws, other applicable copyright laws, and international treaty provisions. Amzer, Inc. retains all rights not expressly granted.

NO WARRANTY

Given the nature of this right to use, Amzer, Inc. makes no warranty or representation, either expressed or implied, with respect to the software or related user documentation or technical support, including their quality, performance, merchantability, or fitness for a particular purpose. No Amzer, Inc. dealer, distributor, agent, or employee is authorized to make any modifications or additions to this warranty.

LIMITATION OF LIABILITY

Because software is inherently complex and may not be completely free of errors, you are required to verify your work and make back-up copies. In no event will Amzer, Inc. be liable for direct, indirect, special, incidental, economic, cover, or consequential damages arising out of the use of or inability to use the software, user documentation, or technical support, including, without limitation, damages or costs relating to the loss of profits, business, goodwill, data, or computer programs, even if advised of the possibility of such damages. Some states or provinces do not allow the exclusion or limitation of implied warranties or the limitation of liability for incidental or consequential damages, so the above exclusion or limitation may not apply to you.

PRERELEASE CODE

The software may contain pre-release code that is not at the level of performance and compatibility of the final, generally available, product offering. These portions of the software product may not operate correctly and may be substantially modified prior to the first commercial shipment. Amzer, Inc. is not obligated to make this or any later version of the software product commercially available.

TERMINATION

Without prejudice to any other rights, Amzer, Inc. may terminate this EULA if you fail to comply with the terms and conditions of this EULA. In such event, you must destroy all copies of the software and all of its component parts.

GENERAL

© 2006 – Amzer, Inc. All rights reserved

Table of Contents

MANUFACTURER'S END-USER LICENSE AGREEMENT (EULA)	2
PREFACE	5
SYSTEM REQUIREMENTS	6
HANDHELD - COMPATIBILITY	6
BLACKBERRY® BES (BLACKBERRY® APPLICATION CONTROL)	7
RELEASING THE POWER OF YOUR BLACKBERRY KEYBOARD	8
OVERVIEW.....	8
CONVENTIONS	8
FEATURES	9
AMZER – SMART KEYBOARD DRIVER FEATURES.....	9
INSTALLATION	11
PC INSTALLATION	11
DEVICE INSTALLATION - BLACKBERRY DESKTOP MANAGER.....	12
BLUETOOTH SETUP	15
KEYBOARD PAIRING	15
REGISTRATION	18
REGISTRATION KEY.....	18
MAIN OPTIONS SCREEN	19
DRIVER OPTIONS	19
MANAGE LAYOUTS	20
MULTI-LANGUAGE CONFIGURATION.....	20
MANAGE HOTKEYS	21
KEY SUBSTITUTIONS (HOTKEYS)	21
CREATING & EDITING HOTKEYS	22
HOTKEY RANGE:	22
KEYBOARD SETTINGS	23
DRIVER CONFIGURATION OPTIONS.....	23
BLACKBERRY® & STANDARD KEYBOARD MODE	25
USING KEYBOARD MODES.....	25
INTRODUCTION OF BLUETOOTH KEYBOARD	26
KEYBOARD FEATURES	26
KEYBOARD SETUP.....	27
KEY LOCATION	28
SPECIAL KEY LOCATION	28
STANDARD CHARACTER KEYS	29
CHARACTER OUTPUT	29

SPECIAL FUNCTION KEYS.....	31
KEY ASSIGNMENTS.....	31
APPLICATION KEY USAGE	32
CONTACT / CALENDAR / MEMO PAD	32
MESSAGE / TASK	33
TEXT EDITING KEY USAGE	34
CONTACT / CALENDAR / MEMO PAD / TASK	34
BLACKBERRY® BES CONFIGURATION.....	35
APPLICATION CONTROL	35
APPLICATION CONTROL POLICY	36
TROUBLESHOOTING.....	37

Preface

The Amzer Bluetooth keyboard manager that runs on BlackBerry® OS™ powered Bluetooth devices and allow a registered user to process keyboard data input wirelessly utilizing this portable keyboard. This unique piece of hardware and software combines state of the art wireless technologies with cutting edge design to deliver a unique end-user experience in mobile computing.

System Requirements

Handheld - Compatibility

The Amzer Bluetooth keyboard manager has been tested with the following devices. If your device is not list on table below, there is a good possibility that the keyboard manager will work. However, Amzer, Inc. and its suppliers cannot not guarantee the keyboard manager will work with any device(s) not listed in the table below.

Device must have **OS & Platform** versions equal or higher than what is stated in the table below to be compatible with the Amzer Bluetooth keyboard manager.

Device	Model	OS Version	Platform Version	Driver Version
7100g	Cingular	4.0.0.219	1.8.0.129	SmartKeyboard
7100t	T-Mobile	4.1.0.198	1.8.0.121	SmartKeyboard
7100t	T-Mobile	4.1.0.309	1.8.0.146	SmartKeyboard
7100i	Nextel	4.1.0.136	2.0.0.44	SmartKeyboard
7105t	T-Mobile	4.1.0.309	1.8.0.146	SmartKeyboard
7130e	Verizon	4.1.0.117	2.2.0.53	SmartKeyboard
7130e	ALLTEL	4.1.0.391	2.2.0.107	SmartKeyboard
7130c	Cingular	4.1.0.321	2.1.0.26	SmartKeyboard
7250	Verizon	4.0.0.204	2.0.0.28	SmartKeyboard
7250	Bell / Rogers	4.0.0.204	2.0.0.28	SmartKeyboard
7250	ALLTEL	4.1.0.291	2.2.0.107	SmartKeyboard
7290	T-Mobile	4.0.0.198	1.8.0.121	SmartKeyboard
7290	Cingular	4.0.0.219	1.8.0.129	SmartKeyboard
7520	Nextel	4.0.0.160	1.4.0.27	SmartKeyboard
8700c	Cingular	4.1.0.194	2.0.0.90	SmartKeyboard
8700r	Rogers	4.1.0.206	2.0.0.97	SmartKeyboard
8700g	T-Mobile	4.1.0.284	2.0.0.120	SmartKeyboard
8703e	Verizon	4.1.0.344	2.2.0.149	SmartKeyboard
8707	Vodafone	4.1.0.316	3.0.0.41	SmartKeyboard
8100	T-Mobile	4.2.0.42	2.2.0.28	SmartKeyboard 2 nd Ed.

BlackBerry® BES (BlackBerry® Application Control)

The following table shows the Amzer Bluetooth keyboard manager compatible BlackBerry® system configuration.

Device Email System	Compatible	Requires Configuration	Configuration Notes
BES 4.0 & higher	Yes	Yes	Amzer driver Application Control Policy must be configured to "ALLOW" Amzer driver to use "Injector API"
BES 3.6	No	-	-
WAP email	Yes	No	-
No email system	Yes	No	-

- * Please contact your BES Administrator to configure your device Application Control Policy to "ALLOW" Smart Keyboard driver to use Injector API.
- * Please see BlackBerry® BES Configuration section for details.

Releasing the Power of Your BlackBerry Keyboard

Overview

Amzer is a BlackBerry® compatible Bluetooth keyboard management utility built on a Bluetooth keyboard driver core. This design enables Amzer to extend the basic Bluetooth keyboard driver functionality by adding a feature rich environment allowing the user to fully control just about every aspect of their BlackBerry® smart phone right from their Professional Bluetooth keyboard.

In order to fully utilize Amzer's capabilities, one need to understand the many features and functionality of Amzer and how they are used and what they are intended to be used for. Several of Amzer's features can affect your ability to be productive when using applications that require a high information input from keyboard such as message, text editors, memo, etc.

To help with identifying the important features of Amzer, the following conventions are used throughout this manual that we think will help you better understand how to get the most from the Amzer keyboard management system.

Conventions

A number of different fonts, key words and characters are used to indicate different types of information through out the manual. Here are some examples and what they mean.

[Brackets] are used to point out key steps, features, commands, etc.

Usage: the key word "Usage" is especially important because it identifies what a specific feature does and how it can be used.



Arrows are used to point focus to features on figures and images.

Note: Notes are used through out the manual and are of high importance. Pay special attention to these.

Features

Amzer – Smart Keyboard Driver Features

The table below list the many feature of Amzer.

Features	Specifications	Amzer - Professional
Compatible with: 7100t, 7100g, 7100r, 7100v, 7100x, 7100i, 7105t, 7130e, 7250, 7290, 7520, 8700c, 8700r		✓
65 Key Support		✓
Graphical Interface		✓
Multi-Language Support		✓
Multi-Tasking - Switching between applications using keyboard		✓
Typematic Rate Control		✓
* Repeat Delay - Helps reduce accidental key press		✓
* Repeat Rate - Controls speed of repeating characters		✓
* Repeating Characters – Enable / Disable		✓
Preprogrammed hotkeys	Preprogrammed keys are fix and cannot be changed	✓
* Message (email) application		✓
* Contacts (Address book) application		✓
* Task (ToDo) application		✓
* Calendar application		✓
Alt – Special Character Mapping (Similar to BlackBerry® keypad)		✓
AltGr – International & Extended Character Mapping		✓
User Programmable Keys	A total of 30-Hotkeys combined can be programmed using any key-combo that's available from list.	✓
* User defined hotkeys for running applications		✓
* User defined hotkeys for quick phone dial		✓
* User defined hotkeys for Compose email		✓
* User defined hotkeys for Create Memo		✓
* User defined hotkeys for Create Task	✓	
Language Layout Configuration	Maximum of (5) keyboard language be selected for hotkey switching	✓
* User defined Hotkey for switching language layouts		✓
* User Enable / Disable audible layout switching indicator		✓
* User adjustable warning volume control		✓
* User adjustable display warning when switching occurs		✓
* User selectable language (up to 5 languages can be selected)		✓
* User defined default language layout	✓	
Audible & Visual Keyboard Connect / Disconnect Indicators	Available on devices that support extended sounds.	✓
* Enable / Disable		✓
* Volume Control		✓
Power Saving Modes		✓
* Backlight - On / Off Control		✓
* Backlight - Auto On Mode Enable / Disable		✓
* Auto On – Enable/Disable Hotkey		✓
* Backlight - Duration Timer Settings (1 - 60) minutes		✓
Backlight Brightness Control (Device(s) that supports adjustment)	Available on devices that support backlight adjustments	✓
* Brightness Control - Hotkey Increase Brightness		✓
* Brightness Control - Hotkey Decrease Brightness		✓

Symbol (SYM) Key Simulation (Dedicated Hotkey)		✓
Keyboard Emulation Modes	Fully supported on devices that support full size BlackBerry keyboard. Partially supported on other devices.	✓
* BlackBerry Mode – BlackBerry key emulation (see notes)		✓
* Standard Mode - PC style keyboard emulation		✓
* Hotkey Mode Switching		✓
* Audible & Visual Mode Switching Indicators		✓
User Programmable Hotkey Actions		✓
KeyPress Sound Simulation		✓
* KeyPress Sound – Enable / Disable		✓
* KeyPress Sound – Volume		✓
* KeyPress Sound – Enable / Disable Hotkey		✓
Device Control Hotkey		✓
* Fixed Hotkey - Keyboard Disable		✓
* Fixed Hotkey - Repeating Characters Enable/Disable		✓
* Fixed Hotkey - Auto Backlight On Enable/Disable		✓
* Fixed Hotkey - KeyPress Sound Volume Up		✓
* Fixed Hotkey - KeyPress Sound Volume Down		✓

Notes:

* 8100 is not supported by "BlackBerry key emulation mode".

Installation

Amzer Bluetooth Keyboard Manager Installation

Please follow the instructions below to install the Amzer Bluetooth keyboard manager onto your BlackBerry® device. This is a two-step process. The first is to install the Amzer files onto your desktop PC. The second step is to use the BlackBerry® Desktop Manager Application Loader to install the Amzer keyboard manager onto your handset.

Note:

It is assumed that you have already installed the BlackBerry® Desktop software that came with your handset and that you have successfully performed at least one synchronization between your BlackBerry® handset and the computer you are using to install this software. If not, please consult the documentation that came with your BlackBerry® handset and set up your system before continuing with this installation.

PC Installation

In order to install keyboard driver onto your device...

1. Locate the **Amzer** driver files. This is the files that were provided on some type of media, downloaded from the Internet, or as an attachment through an e-mail.

If the file has the ZIP or RAR file extension, extract the driver file(s) before continuing on to the installation process.

2. Once the driver files have been extracted and saved on you desktop or laptop computer, go to the following section "**Handset Installation**" to install the driver onto the handset.

Handset Installation

Device Installation - BlackBerry Desktop Manager

The BlackBerry® Desktop Manager (Provide with handset) used for synchronization of PIM information is used to install the Bluetooth keyboard driver onto your hand set. Simply connect your handset to your desktop PC and run the BlackBerry® Desktop Manager. The following steps explain the installation process.

1. Before continuing, connect the handset to the PC using the USB cable supplied with the handset.

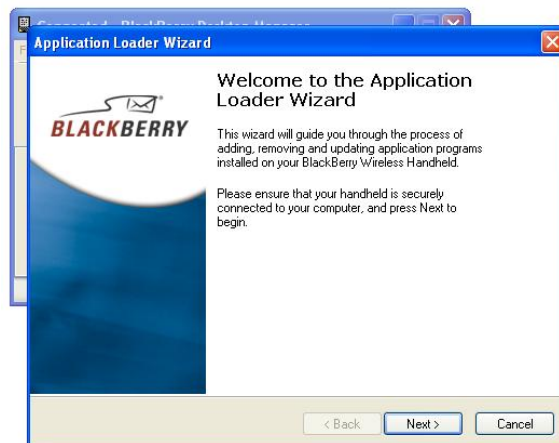
2. Launch the BlackBerry® Desktop Manager by clicking on the Icon as shown in the figure on the right.



3. Double click on the [Application Loader] icon to begin the installation process as shown on the left.



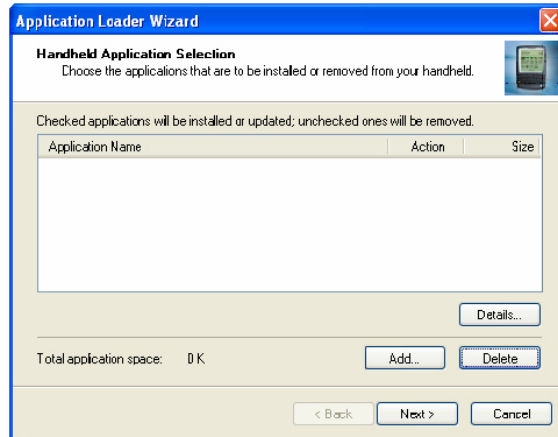
4. Click on the [Next] icon to begin the installation process.



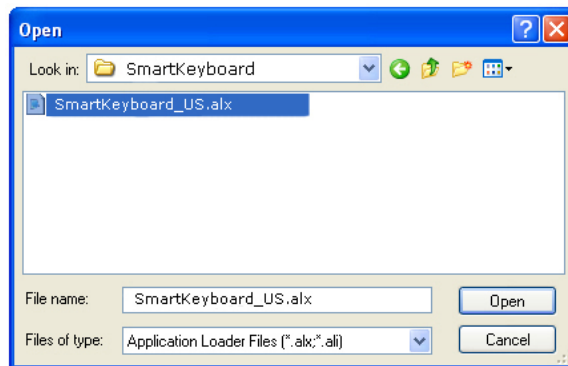
Handset Installation

BlackBerry® Desktop Manager

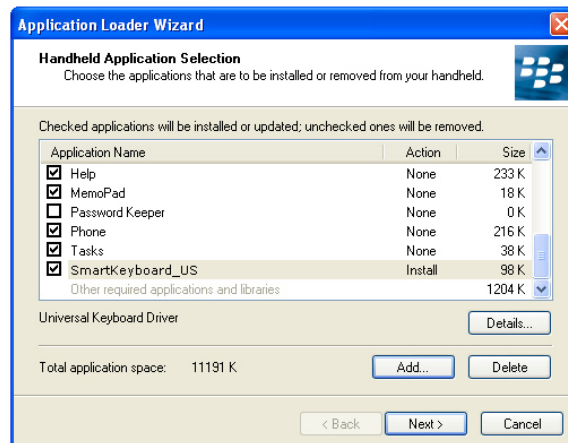
5. If the [SmartKeyboard] manager files are not shown as in the image on the left, use the **[Add]** option to locate the folder where the files have been installed.



6. Check the box next to the **SmartKeyboard_US.alx** line item then click **[Next]** to continue.



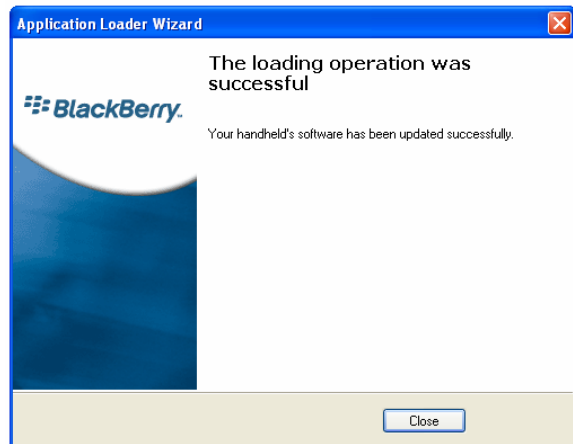
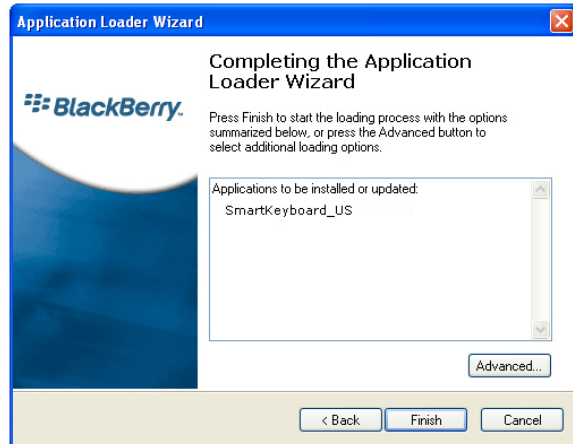
7. Click on the **[Next]** command option to begin the installation process.



Handset Installation

BlackBerry® Desktop Manager

8. Click on the [Finish] command option complete the installation process.



Bluetooth Setup

Keyboard Pairing

Now that the Smart keyboard manager application is installed on the BlackBerry® handset, the BlackBerry® Bluetooth Manager needs to be configured to work with the keyboard.

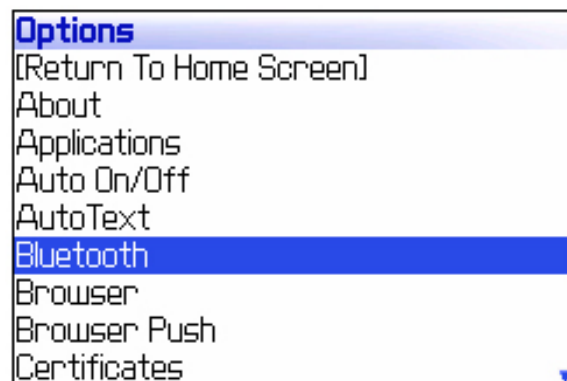
The following steps show how to [Pair] your Bluetooth keyboard using the BlackBerry® device Bluetooth manager application.

1. Before proceeding with the keyboard pairing, install the 2 AAA batteries into the keyboard and press the pairing button.



2. Open the Bluetooth manager as shown in the figure on the right.

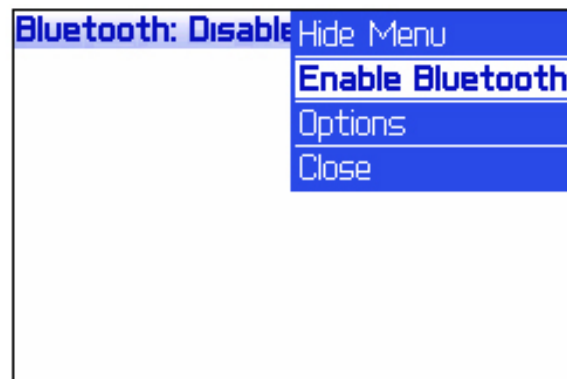
The Bluetooth manager is found under [**Options**] on your device.



3. Click on the thumbwheel to open the menu as shown in the figure on the right.

Highlight the [**Enable Bluetooth**] option as shown in the figure on the right.

Click the thumbwheel to enable the Bluetooth radio.



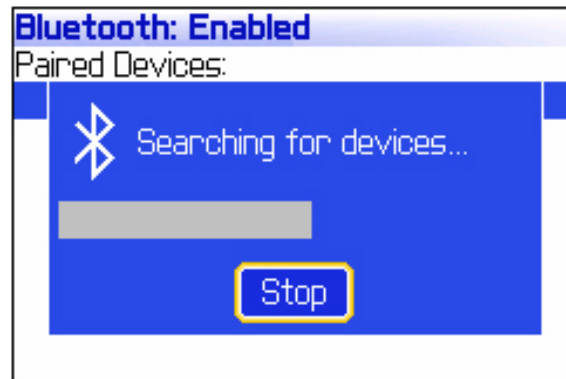
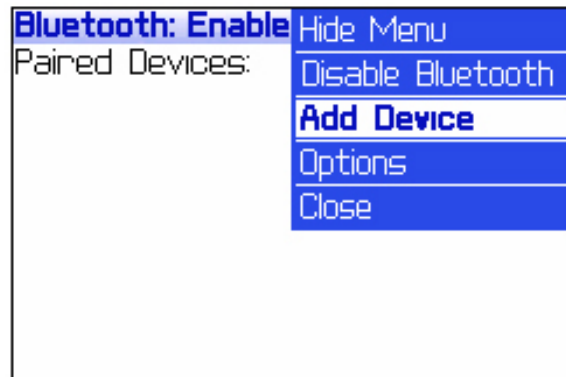
Bluetooth Setup

Keyboard Pairing Continue

Now that the Bluetooth manager is turned on, the BlackBerry® Bluetooth manager needs to search for the Professional keyboard device.

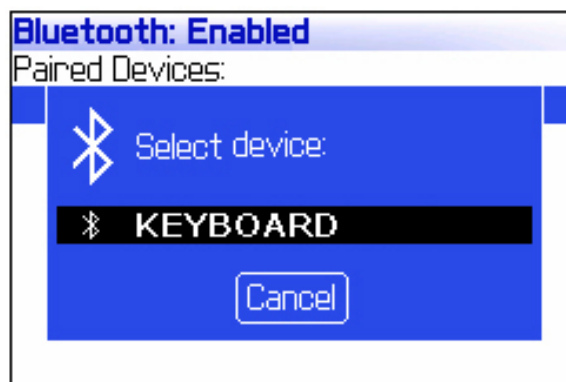
4. Click on the thumbwheel and select the **[Add Device]** menu option as shown in the figure on the right.

Click the thumbwheel to start the discovery process to search for nearby Bluetooth devices as shown in the figure below.



5. Highlight the **[KEYBOARD]** from the list of nearby devices as shown in the figure on the right.

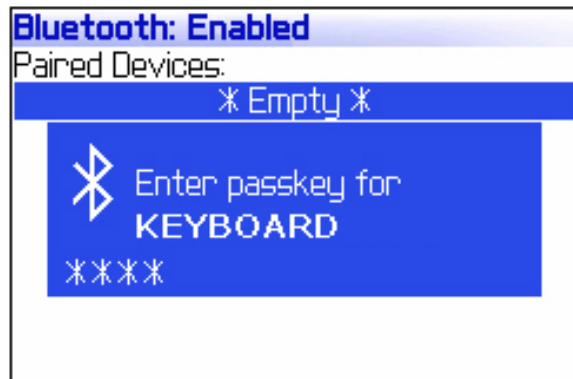
Click the thumbwheel or press **[Enter]** to select the keyboard.



Bluetooth Setup

Keyboard Pairing Continue

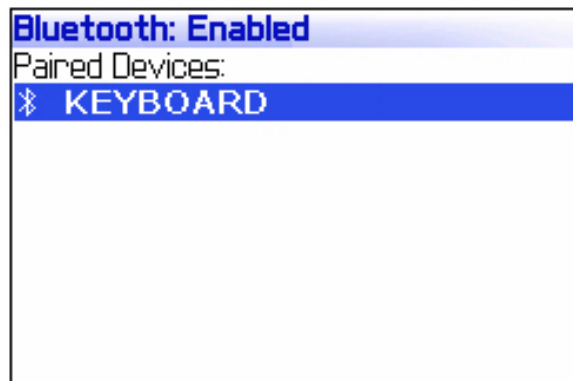
6. Enter the [0000] pairing passkey then click the thumbwheel or press the enter key to finalized the pairing of keyboard.



Note:

If the above steps were performed correctly, the keyboard should be listed in the **Paired Device** list as shown in the figure on the right.

If the keyboard is not listed, perform **Steps 4 – 6** until the keyboard is properly paired with the handset.



Registration

Registration Key

Now that the Amzer keyboard manager application is installed on the BlackBerry handset, driver needs to be registered before it will connect to the Professional Bluetooth keyboard.

Step 1:

Using the device trackwheel, move the cursor to the [Register] option.



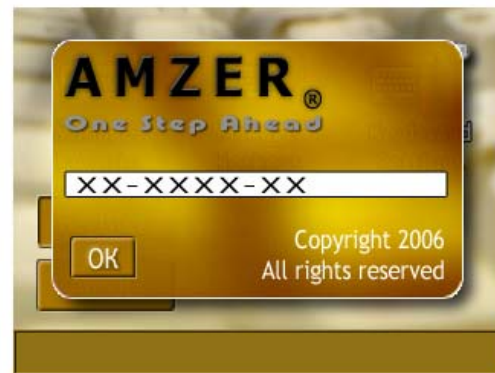
Step 2:

Enter in the registration key code provided to you as shown in the figure on the right.



Step 3:

When the key code has been entered, move the cursor to the [OK] option and click enter.



Wait for a few seconds as Amzer will now connect to the keyboard. The status bar will change to "Keyboard connected".

Once Amzer makes a connection, the keyboard is ready for use.

Note: the Bluetooth connection normally takes a few seconds to connect. Therefore when turning

On the keyboard there will be a delay before Amzer will display input from the keyboard. This is normal operation of Bluetooth connectivity.



Main Options Screen

Driver Options

Amzer Keyboard Manager Application options are divided into three main. The following provides details on these options.

1. Manage Layouts:

Manage Layouts is used for managing keyboard language layouts. Manage Layouts lets you select the different languages to be used with the keyboard and it also allows you to configure various control features when switching between languages.

2. Manage Hotkeys:

Manage Hotkeys is used for creating and managing hotkeys. Manage Hotkeys lets you Create / Edit / Delete / View Actions hotkeys.

3. Keyboard Settings:

Keyboard Settings is used to configure remaining options/features that controls how the keyboard will responds to various user input or conditions. These options or features vary in the different versions offered in Amzer.

Keyboard Settings Command:

Manage Layouts Command:

Manage Hotkeys Command:



Manage Layouts

Multi-Language Configuration

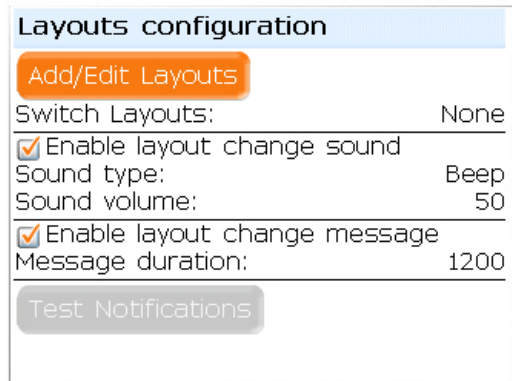
Usage: Is used when multiple keyboard language layout are used for data input from the keyboard. Example, one that is multi-lingual could use Language Manager to alternately switch between the different Professional keyboard languages layouts using a user define key sequence [Hotkeys].

The following screens describe the various options used for managing multi-language layouts.

- **Add/Edit Language** – Displays the *Select Language* screen where enabling and disabling of languages are made.
- **Language Short-cut** – Is a user defined option used for switching between different language layouts.

Note that switching to between different languages can be made anywhere and at anytime after multiple languages have been configured.

- **[√] Enable layout change sound** – Audible notification indicating that the driver's layout is about to be switched.
- **Sound volume** – Adjust the level of the handset notification sound.
- **[√] Enable layout change message** – Visual notification indicating that the driver's layout is about to be switched.
- **Message duration** – Presets the duration that the message notification is displayed.
- **Test Notification** – is used to see how the audible and visual notification works. Fine adjustments can be made before leaving the language configuration property page.
- **[√] US (English)** – Enables language to be used. The Amzer driver is installed with "US (English)" as the default language.



Manage Hotkeys

Key Substitutions (Hotkeys)

Usage: Hotkeys (Key Substitutions) are used to help reduce the number of steps required to perform a task such as opening the message application and composing an email. The following list of items is what can be done using Amzer's hotkey system.

- Launch Application (Standard BlackBerry® & third Party Applications)
- Quick dial Number (From Address book and entered)
- Compose Mail
- Create Memo
- Create Task
- Open Options
- Start Browser
- Lock Device
- Show Home Screen



Setup key substitutions

1. Func+1: Launch application - Messages
2. Func+2: Launch application - Calculator
3. Func+3: Create memo
4. Func+4: Open Profiles
5. Func+5: Quickdial number - 17145529875

Manage Hotkeys

Creating & Editing Hotkeys

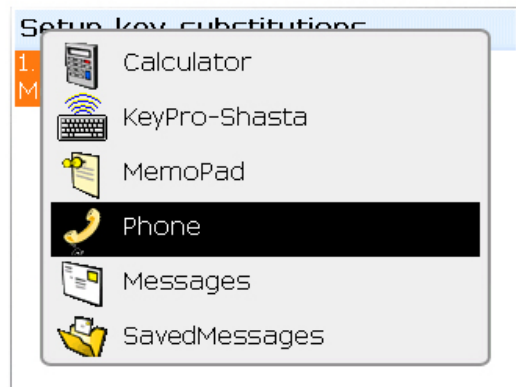
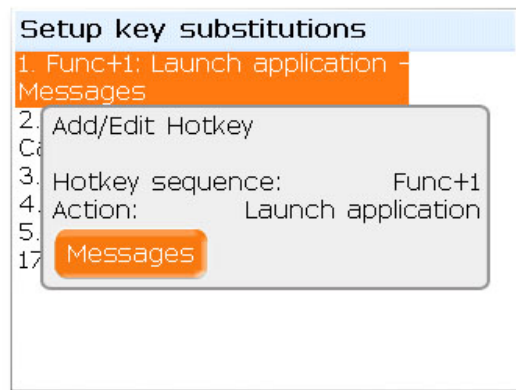
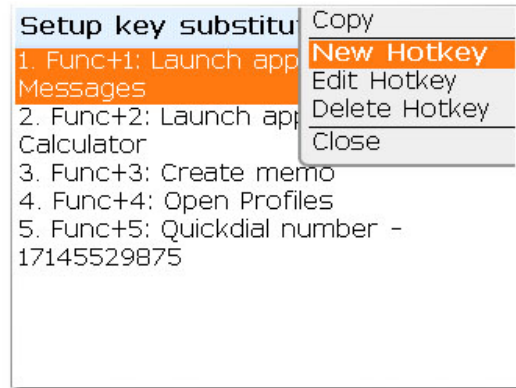
The following screens describe the various options used for managing hotkeys.

Setup key substitution – Main screen used for managing hotkeys. Hotkey main screen displays the *list of user defined hotkeys*.

- **New Hotkey** – Command option used for creating new hotkeys.
- **Edit Hotkey** – Command option used for editing existing hotkey assignments.
- **Delete Hotkey** – Command option used for permanently deleting existing hotkey assignments.
- **Hotkey sequence** – Is a user defined key sequence used for performing the specified *Action*. For example launching a BlackBerry® application.

Hotkey Range: Fn + (0 – 9)
Alt + (0 – 9)
Ctrl + (0 – 9)

- **Action** – Defines the hotkey action to be carried out. The following is a list of available actions.
 - Launch Application
 - Quickdial Number
 - Compose Mail
 - Create Memo
 - Create Task
 - Open Options
 - Start Browser
 - Lock Device
 - Show Home Screen



- **Select Application** – User defined application assigned to hotkey.

Keyboard Settings

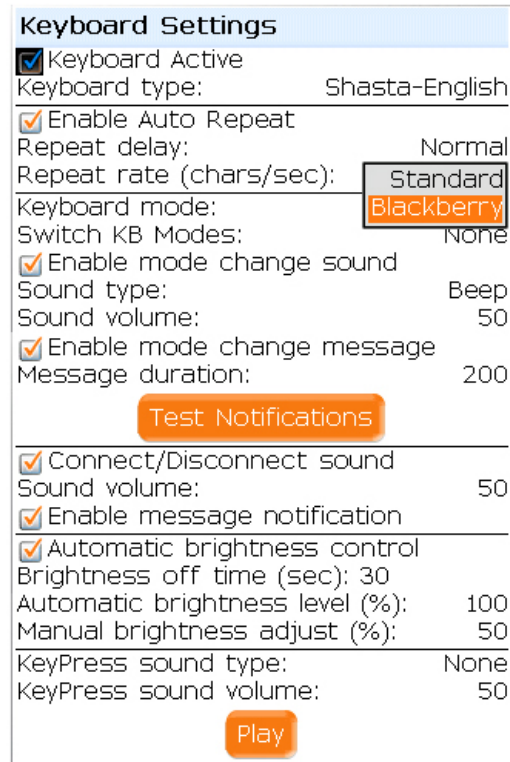
Driver Configuration Options

The following describe the various options used for managing the Amzer-Professional driver.

- **[√] Keyboard Active** – Enable/Disable connection between Amzer and Professional keyboard. Disable connection when keyboard is not being used.
- **[√] Enable Auto Repeat** – Checking the Enable Auto Repeat checkbox switches the Auto Repeat function to on. While unchecking the Enable Auto Repeat checkbox switches the Auto Repeat function to off.
- **Repeat delay** – The rate at which the key depression occurs is set. The available settings are Slowest, Slow, Normal, Fast, and Fastest.
- **Repeat rate** – The rate at which key input is repeated. The range of settings is from (2 – 20) with the slowest at 2 and fastest repeat rate of 20.
- **Keyboard Mode** – Sets the default driver input mode.

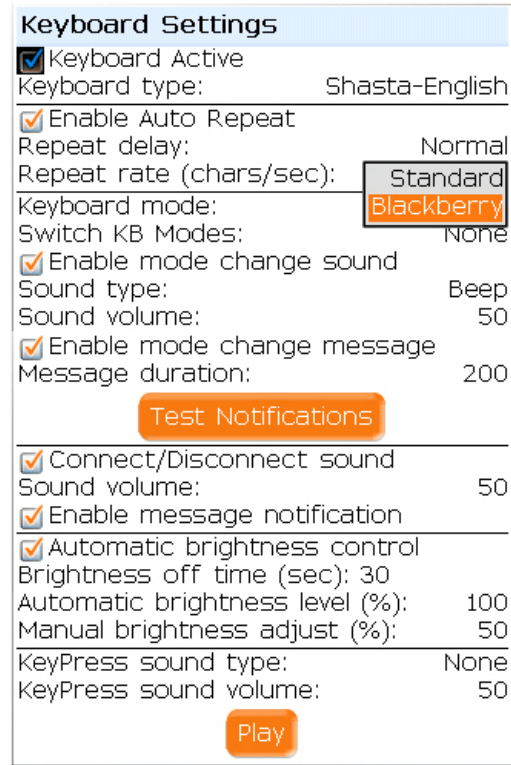
Standard mode emulates the PC style “Repeating characters” when key is held down. Auto Repeat must be enabled.

BlackBerry mode emulates the automatic-upper case characters when key is held down and insert special characters when key is held down and Up/Down arrows are pressed.
- **Switch KB Mode** – Is a user defined short-cut key sequence used for switching between the different driver input modes.
- **[√] Enable mode change sound** – Audible notification indicating that the driver’s input mode is about to be switched.
- **Sound volume** – Adjust the level of the handset notification sound.
- **[√] Enable mode change message** – Visual notification indicating that the driver’s input mode is about to change.



Keyboard Settings Continued

- **Message duration** – Length of time the notification message is displayed.
- **Test Notification** – Used to sample the audible and visual notification settings. Fine adjustments can be made before leaving the preference property page.
- **[√] Connect/Disconnect sound** – Enable audio warning that the keyboard connected or disconnected with driver.
- **Sound volume** – Adjust the level of the handset notification sound.
- **[√] Enable message notification** – Enable visual warning that the keyboard connected or disconnected with driver.
- **[√] Automatic brightness control** – Enables automatic backlight control when a key is pressed on the Professional keyboard.
- **Brightness off time (sec)** – To conserve the handset battery, the handset backlight can be set to automatically shutoff when no keys are pressed within the specified time. The automatic shutoff range is (0 – 60) seconds.
- **Automatic brightness level (%)** – Default automatic brightness level. The range is (10 – 100) percent in increments of 10%. When the backlight is automatically turned on when a key is pressed it is set to this level.
- **Manual brightness adjust (%)** – The default Difference level that the backlight will be set to when the backlight is manually controlled. The range is (10 – 100) percent in increments of 10%.



Brightness - Manual = *Actual Brightness*

Example: 100 – 50 = 50

- **Manual Control** – To adjust backlight brightness manually use the following short-cut keys:

[Fn] + [+] Increase Intensity

[Fn] + [-] Decrease Intensity

- **KeyPress sound type** – Enable/Disable Key Press sound simulation.
- **KeyPress sound volume** – Adjust the level of the handset key-click sound simulation.

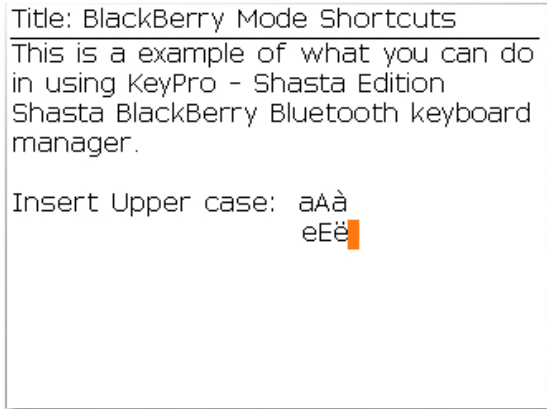
BlackBerry® & Standard Keyboard Mode

Using Keyboard Modes

The following describe the various features when using BlackBerry® & Standard keyboard input modes.

BlackBerry® Input Mode

- **Insert Upper Case** – Pressing and holding a letter key automatically inserts the key's capital letter.
- **Insert Extended Character** – Pressing and holding a letter key while pressing the **Up** or **Down** Arrow keys automatically inserts the key's extended character.

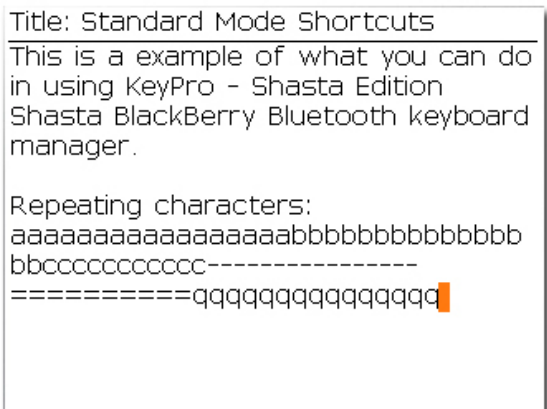


- **Speed Dial Key Assignment** – While in BlackBerry® mode, pressing and holding any alphanumeric key on the Professional keyboard while in the [Home] screen launches the BlackBerry® "Speed dial Assign" application. From the speed dial assign application you can assign a phone number to dial when the key on the Professional keyboard is pressed and held while in the home screen.

Notes: In BlackBerry® mode, repeating character is not possible. This is the same as pressing a key on the BlackBerry® device it self.

Standard Input Mode

- **Repeating Character** – Pressing and holding a letter key automatically inserts repeating characters.
- **Insert Extended Character** – Inserting extended or international characters can be done using the [Alt + Key], [AltGr + Key], or the Symbols option.



Notes: Repeating character will only work when the Keyboard Settings – [✓] **Enable Auto Repeat** option has been enabled.

Introduction of Bluetooth Keyboard

Keyboard Features

Welcome use the

Bluetooth Keyboard

Cradle :

The SmartPhone & PDA cradle of the keyboard

Battery Cover :

Allow to place two AAA battery in it.

Keyboard lock :

The lock is able to fix the keyboard in unfolding position.

Power & the LED signal :

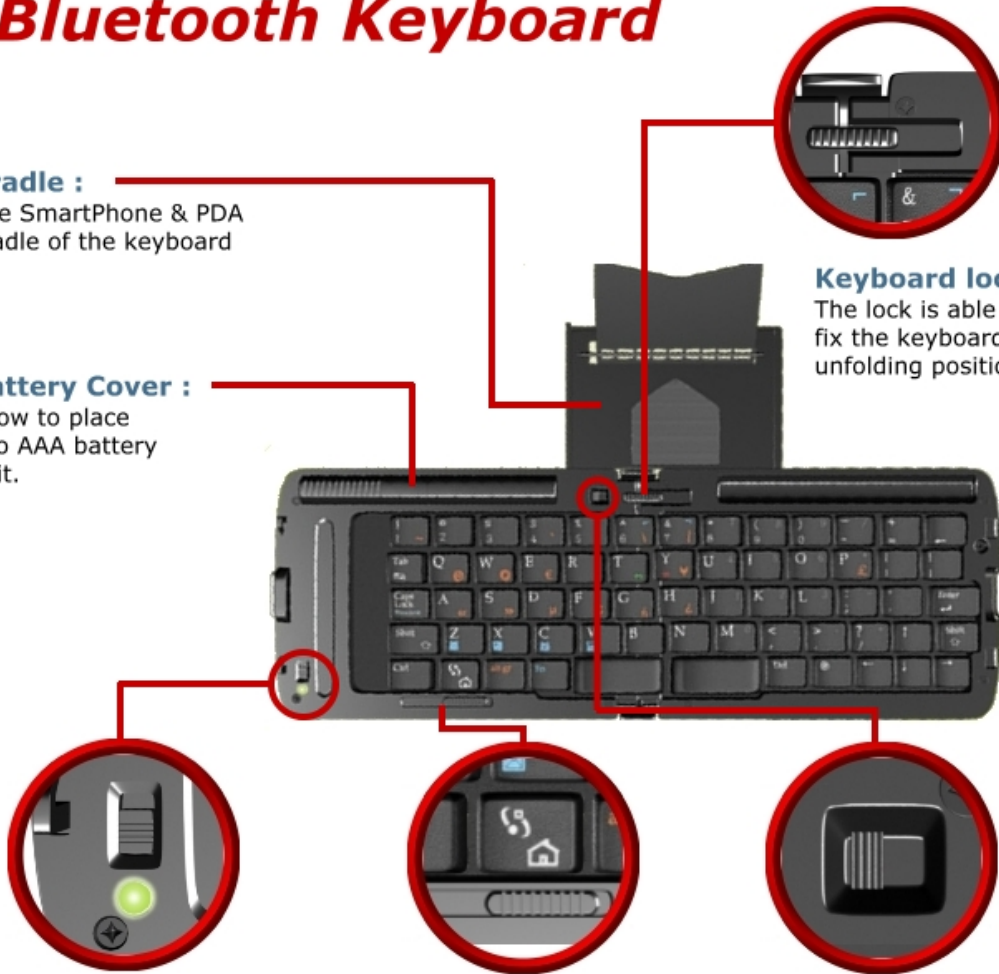
Power turn upward :
Power on
Power turn downward :
Power off

Slide shaft :

Pull in the right direction to leave keypad no gap for typing.

Cradle Lock :

Please unlock the lock when you are folding your cradle.



Introduction of Amzer Smart Keyboard

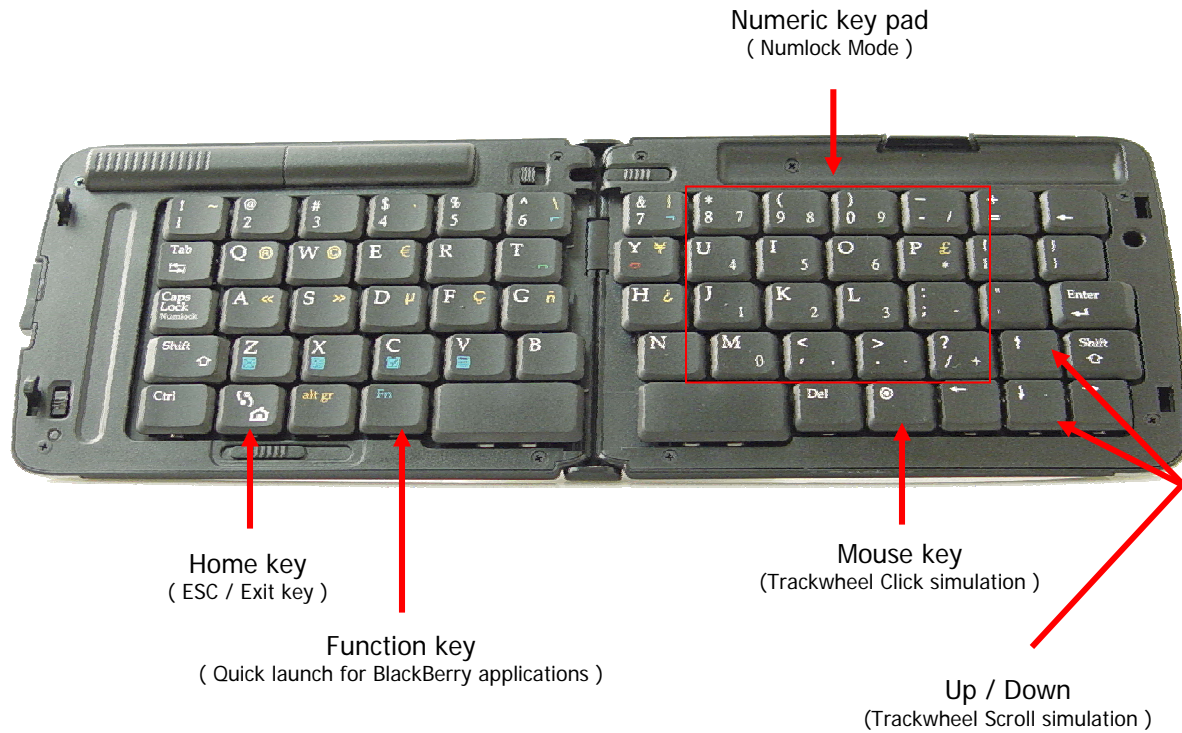
Keyboard Setup



Key Location

Special Key Location

Now that the keyboard driver and application is installed on the BlackBerry handset, user settings needs to be configured can be used.



Standard Character Keys

Character Output

Key Press	Output	Key Press	Output
1	1	SHFT	!
2	2	SHFT	@
3	3	SHFT	#
4	4	SHFT	\$
5	5	SHFT	%
6	6	SHFT	^
7	7	SHFT	&
8	8	SHFT	*
9	9	SHFT	(
0	0	SHFT)
-	-	SHFT	_
=	=	SHFT	+
<-	<-	SHFT	Back
Tab	N/A	SHFT	N/A
q	q	SHFT	Q
w	w	SHFT	W
e	e	SHFT	E
r	r	SHFT	R
t	t	SHFT	T
y	y	SHFT	Y
u	u	SHFT	U
i	i	SHFT	I
o	o	SHFT	O
p	p	SHFT	P
[[SHFT	{
]]	SHFT	}
a	a	SHFT	A
s	s	SHFT	S
d	d	SHFT	D
f	f	SHFT	F
g	g	SHFT	G

Standard Character Keys

Character Output

Key Press	Output	Key Press	Output
h	h	SHFT	h
j	j	SHFT	J
k	k	SHFT	K
l	l	SHFT	L
;	;	SHFT	:
'	'	SHFT	"
z	z	SHFT	Z
x	x	SHFT	X
c	c	SHFT	C
v	v	SHFT	V
b	b	SHFT	B
n	n	SHFT	N
m	m	SHFT	M
,	,	SHFT	<
.	.	SHFT	>
/	/	SHFT	?

Special Function Keys

Key Assignments

Special Keys	Function	Description
DEL	Character deletion	Delete one character to right
ESC	ESC / EXIT	Exit application
Mouse	Open / Select	Simulates BLackBerry trackwheel push
Up Arrow	Scroll Up	Simulates BLackBerry trackwheel scroll
Down Arrow	Scroll Down	Simulates BLackBerry trackwheel scroll
CTRL + TAB	Select Text ON/OFF	Turn ON/OFF select text editing option

[Fn] Key	Function	Description
[Fn] + Z	Run	Message (eMail)
[Fn] + X	Run	Contacts
[Fn] + C	Run	Task (ToDo)
[Fn] + V	Calender	Calendar
[Fn] + B	SYM Key	Symbol key simulation
[Fn] + CAPS	Numlock	Numeric key pad
[Fn] + K	Keyboard Active	Disable
[Fn] + L	Automatic Brightness	Toggle Enable/Disable
[Fn] + S	Key Sound	Toggle Beep / None
[Fn] + R	Repeat Character	Toggle Enable/Disable

[Alt gr] Key	Function	Character
[Alt] + 1	Character	~
[Alt] + 4	Character	`
[Alt] + 6	Character	\
[Alt] + 7	Character	
[Alt] + Q	Character	®
[Alt] + W	Character	©
[Alt] + E	Character	€
[Alt] + Y	Character	¥
[Alt] + P	Character	£
[Alt] + A	Character	«
[Alt] + S	Character	»
[Alt] + D	Character	μ
[Alt] + F	Character	Ç
[Alt] + G	Character	ñ
[Alt] + H	Character	¿

ARROW Keys	Function	Description
LEFT	Cursor / Menu	Left one position
RIGHT	Cursor / Menu	Right one position
UP	Cursor / Menu	Up one position
DOWN	Cursor / Menu	Down one position

Application Key Usage

Contact / Calendar / Memo Pad

Contact	
Key	Description
RIGHT ARROW	Move right one character
LEFT ARROW	Move left one character
DOWN ARROW	Move cursor down one row
UP ARROW	Move cursor up one row
HOME	ESC or EXIT (Simulate ESC push)
MOUSE	Menu PopUp / Select (Simulate Trackwheel push)
DEL	Deletes next character

Calendar	
Key	Description
RIGHT ARROW	Move right one character
LEFT ARROW	Move left one character
DOWN ARROW	Move cursor down one row
UP ARROW	Move cursor up one row
HOME	ESC or EXIT (Simulate ESC push)
MOUSE	Menu PopUp / Select (Simulate Trackwheel push)
DEL	Deletes next character

Memo Pad	
Key	Description
RIGHT ARROW	Move right one character
LEFT ARROW	Move left one character
DOWN ARROW	Move cursor down one row
UP ARROW	Move cursor up one row
HOME	ESC or EXIT (Simulate ESC push)
MOUSE	Menu PopUp / Select (Simulate Trackwheel push)
DEL	Deletes next character

Application Key Usage

Message / Task

Message / eMail	
Key	Description
RIGHT ARROW	Move right one character
LEFT ARROW	Move left one character
DOWN ARROW	Move cursor down one row
UP ARROW	Move cursor up one row
HOME	ESC or EXIT (Simulate ESC push)
MOUSE	Menu PopUp / Select (Simulate Trackwheel push)
DEL	Deletes next character

Task / ToDo	
Key	Description
RIGHT ARROW	Move right one character
LEFT ARROW	Move left one character
DOWN ARROW	Move cursor down one row
UP ARROW	Move cursor up one row
HOME	ESC or EXIT (Simulate ESC push)
MOUSE	Menu PopUp / Select (Simulate Trackwheel push)
DEL	Deletes next character

Text Editing Key Usage

Contact / Calendar / Memo Pad / Task

While in Text Selection Mode	
Key	Description
BACKSPACE	Delete
ALT + BACKSPACE	Delete
SHFT + BACKSPACE	Delete
DELETE	Delete
ALT + DELETE	Delete
ESCAPE	Exit text selection mode
ALT + MOUSE CLICK	Copy
SHFT + MOUSE CLICK	Paste
SHFT + ARROW(s)	Select word or lines

While Not in Text Selection Mode	
ALT + MOUSE CLICK	Enter select mode
SHFT + MOUSE CLICK	Paste
SHFT + ARROW(s)	Enter select mode and select word

BlackBerry® BES Configuration

Application Control

Because of the high security profile of BlackBerry® devices, most third party applications including drivers are restricted from use of certain low level API that could possible compromise the security features of BlackBerry devices.

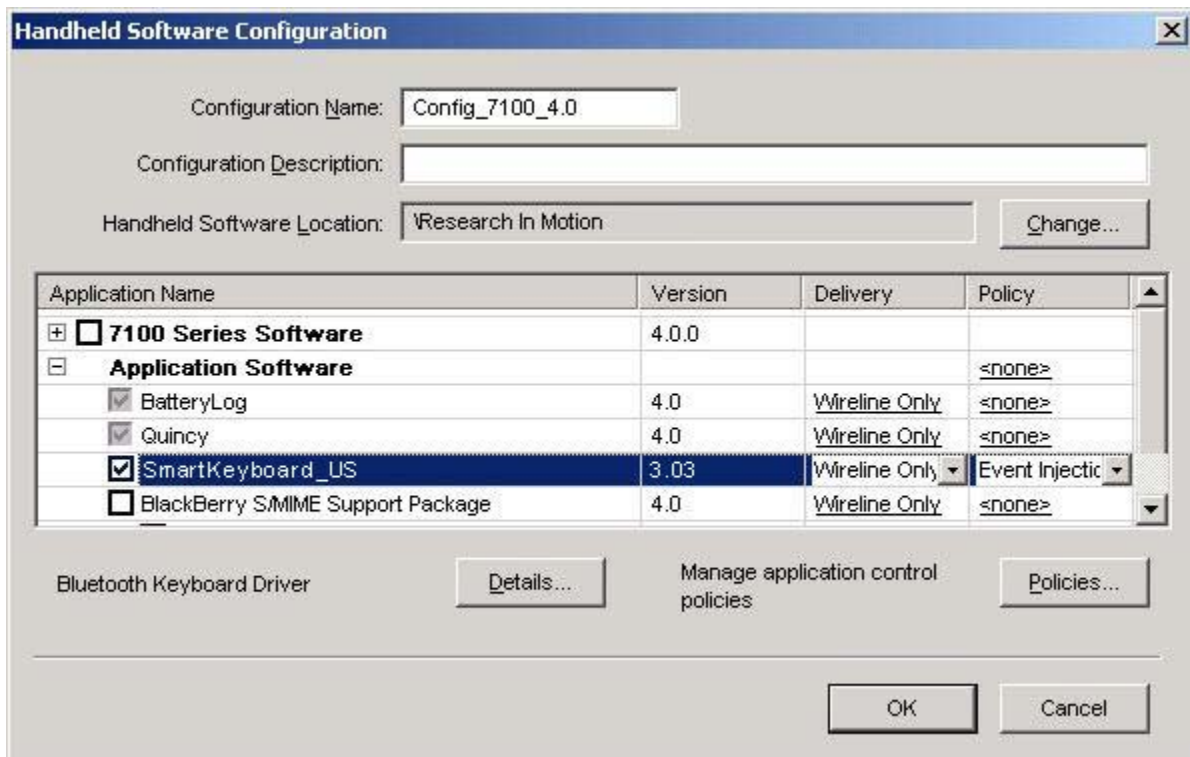
Therefore in order for the Bluetooth keyboard driver to function properly, the driver must be "Allowed" to use the low level Event Injector API that enable keyboard input to be displayed (injected into) applications running on the BlackBerry® handset.

Allowing the keyboard driver the use of the Event Injector API requires the following:

1. Setting up a driver application profile
2. Installing the Smart Keyboard driver onto the handset from the BES using USB or OTA.

Step 1: Install the Amzer Smart Keyboard driver onto the BES or Host computer.

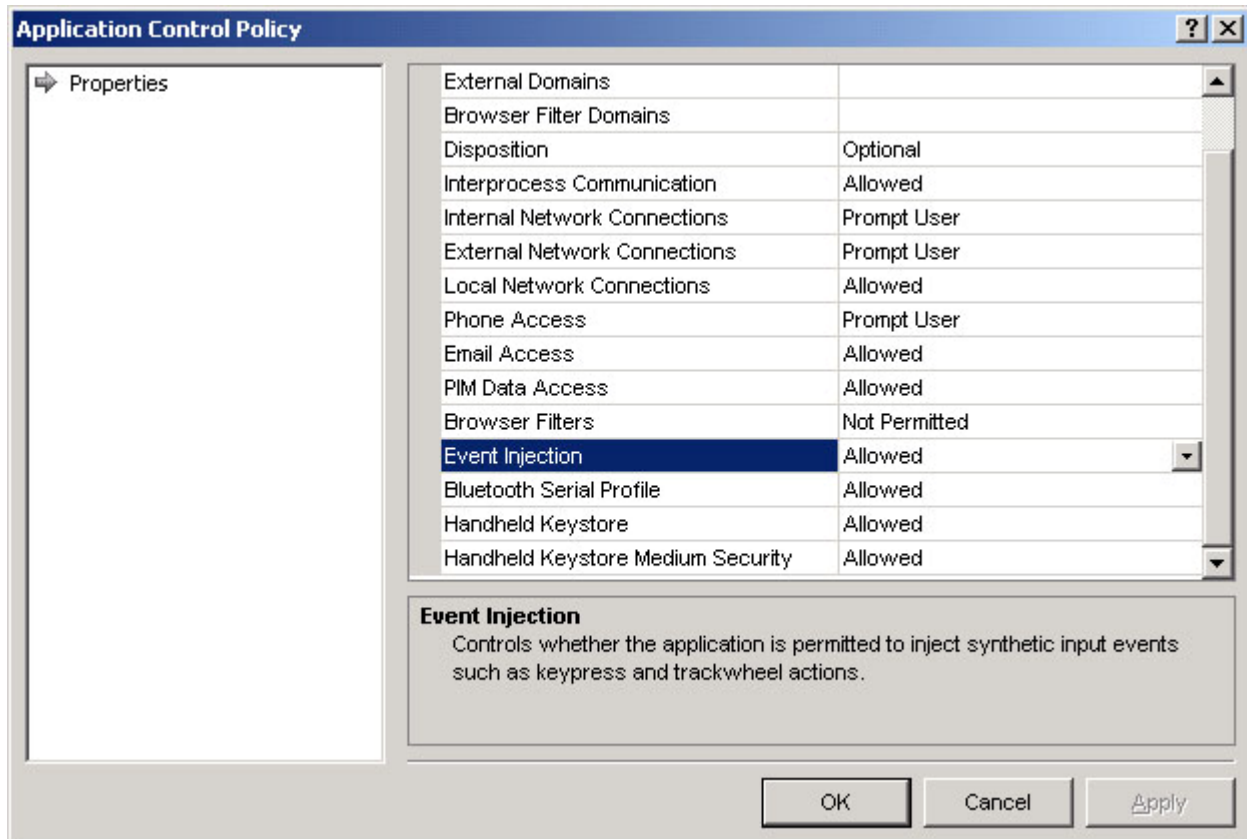
Step 2: **Re-indexing** the software application files using the "Apploader.exe" Application to recognize the new driver files as shown below.



BlackBerry® BES Configuration

Application Control Policy

Step 3: Change the Application Control Policy for the “Event Injector” from “Not Permitted” to “Allowed” as shown in the figure below.



Step 4: Now that the Bluetooth keyboard driver has been allowed use of the Event Injector API, install the driver onto the device from the BES or Host system using USB or OTA.

Troubleshooting

Problem	Possible cause	Corrective action
Smart Keyboard driver starts with "Injector API policy. Please contact your BES administrator to Unblock Injector API" error message.	"Injector API Blocking" is caused by security measures implemented by your BES Application Control Policy for your device.	You should contact your BES administrator to configure your device's Application Control Policy to allow the Smart Keyboard driver the use of the Injector API. See User's Manual for details on configuring your device Application Control Policy.
My keyboard is paired but Smart Keyboard driver indicates keyboard is disconnected.	<ol style="list-style-type: none"> Smart Keyboard driver was not registered. <input checked="" type="checkbox"/> Keyboard Active not enabled. 	<ol style="list-style-type: none"> Verify that your registration key is correctly entered. Activate keyboard under "Keyboard Settings".
My keyboard is turned on and my driver says it is connected but I can not type using the Professional keyboard.	<ol style="list-style-type: none"> Language layout settings is not supported or not selected. Smart Keyboard is not responding to inputs. 	<ol style="list-style-type: none"> Open the "Manage Layouts" option and set the language layout to "US (English)". Restart Smart Keyboard connection by disabling <input type="checkbox"/> Keyboard Active and exiting and saving new settings. Then enable <input checked="" type="checkbox"/> Keyboard Active. If above does not solve the problem try resetting the device.
Amzer stopped connecting to my Professional keyboard.	<ol style="list-style-type: none"> Smart Keyboard driver configuration data possibly corrupted. Smart Keyboard registration key incorrect. 	<ol style="list-style-type: none"> Using the BlackBerry® desktop manager un-install Smart Keyboard driver then re-install. Re-enter Smart Keyboard driver registration key.
Pressing and holding a key does not repeat characters.	<ol style="list-style-type: none"> Auto Repeat not enabled. Keyboard input mode set to BlackBerry® mode. 	<ol style="list-style-type: none"> Enable <input checked="" type="checkbox"/> Auto Repeat in "Keyboard settings". Change Keyboard mode to "Standard".
My BlackBerry® does not emit key taps when pressing a key.	KeyPress Sound Type setting is not enabled in Smart Keyboard driver.	Enable "KeyPress Sound Type" by selecting Beep option then set the desired volume.
Can't pair another Bluetooth device to my BlackBerry® device when Smart Keyboard driver is installed.	When Smart keyboard driver is actively searching for the Professional keyboard the Bluetooth Manager becomes busy this prevents new devices from pairing.	Try disabling Smart keyboard driver by un-checking the <input type="checkbox"/> Keyboard Active in "Keyboard settings" then saving the new settings.

Free Manuals Download Website

<http://myh66.com>

<http://usermanuals.us>

<http://www.somanuals.com>

<http://www.4manuals.cc>

<http://www.manual-lib.com>

<http://www.404manual.com>

<http://www.luxmanual.com>

<http://aubethermostatmanual.com>

Golf course search by state

<http://golfingnear.com>

Email search by domain

<http://emailbydomain.com>

Auto manuals search

<http://auto.somanuals.com>

TV manuals search

<http://tv.somanuals.com>