

Network Extender Kits

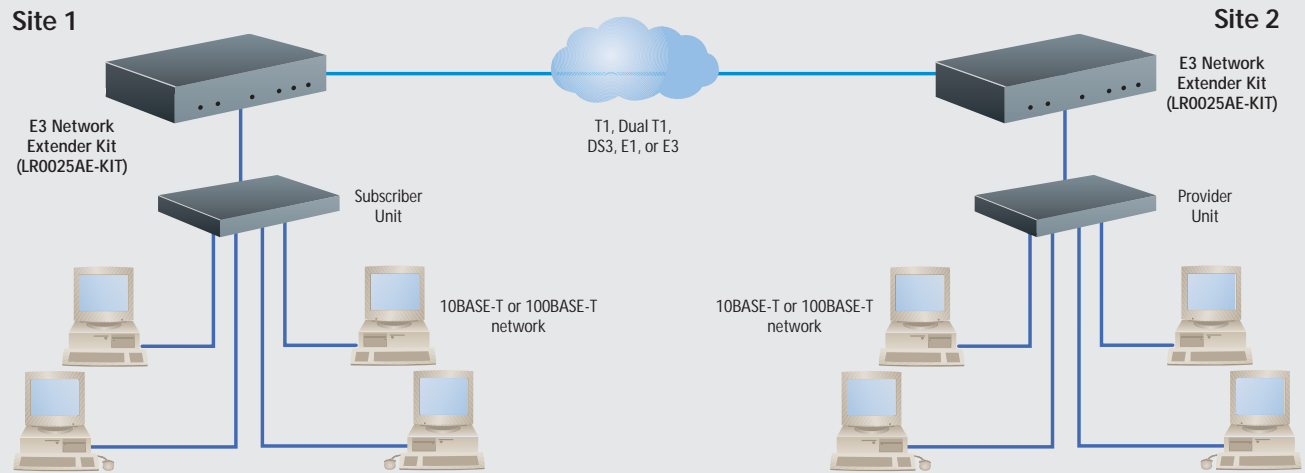


**Use T1, Dual T1, DS3, E1, or E3 lines to link
your sites together in a single, seamless
Ethernet network!**

FEATURES

- Link two Ethernet networks across T1, Dual T1, DS3, E1, or E3 circuits.
- Plug-and-play WAN bridging.
- No software required.
- Transparent to network operation.
- Connects directly to any 10BASE-T or 100BASE-TX Ethernet port.
- LEDs keep you informed of link and network conditions.

Link your networks across a wide area at local-area speeds—more easily than ever!



OVERVIEW

These Network Extenders provide simple LAN connectivity across T1, Dual T1, DS3, E1, or E3 leased lines without complicated routers.

Transparent point-to-point connectivity

Use a pair of extenders in a point-to-point application to link two networks together—for instance, you can link the network in a remote office to your corporate network. The extenders are also ideal as a front end for an IP router, installed between your router and an ISP.

And because they're totally transparent to your network, the extenders don't affect the operation of your network devices.

Long-distance

Unlike ordinary DSL extenders which operate over copper wire that you own, Network Extender Kits operate over circuits provided by your telco. Because you're using telco lines, your range is theoretically infinite. You can easily use one of these extenders to seamlessly link to a network across the country or even around the world.

High-speed reliable transmission

The T1 Network Extender operates over a single T1 line and supports selectable symmetrical T1 data rates up to 1.55 Mbps.

The Dual T1 Network Extender Kit doubles T1 throughput to 3.09 Mbps by sending data over two loop-bonded T1 lines.

For networks with even higher bandwidth requirements, the DS3 Network Extender provides an incredible 45 Mbps.

The E1 Network Extender works over a single E1 line and supports E1 data rates up to 2.048 Mbps.

The E3 Network Extender operates over one E3 line and sends data at E3 rates of 45 Mbps.

The extenders use a 100% packet-based IPacket™ compliant technology for optimum throughput and reliability.

Easy to set up

Network Extenders are easy to install—literally plug and play. Even the CSU/DSU is built in so you don't need to buy a separate device.

To install the extenders, just verify that the extender's CSU/DSU DIP switches are set to your configuration correctly, plug the extender into your Ethernet switch and your T1, Dual T1, DS3, E1, or E3 line, and you're ready to go! LEDs signal that a connection is established and operational.

The extenders feature 10-/100-Mbps autosensing Ethernet ports—just connect it to your switch, and the extender automatically adapts to your network speed. An LED indicates whether 10- or 100-Mbps connections are made.

Each extender kit includes a single-port provider unit and a single-port subscriber unit. The provider unit is installed at the Central Office (CO) or "head end" of the connection and controls all configurable options. The sub-scriber unit is installed at the customer premise.



LR0025A-KIT

TECH SPECS

Bandwidth — LR0030A-KIT: Selectable to 1.55 Mbps;
 LR0032A-KIT: Selectable to 3.09 Mbps;
 LR0025A-KIT, LR0025AE-KIT: Selectable to 45 Mbps;
 LR0030AE-KIT: Selectable to 2.048 Mbps

Compliance — NEBS: GR-63-CORE, GR-1089-CORE;
 EMC: FCC Part 15, CSA/C108.8, EN55022, EN55024;
 Safety: UL® 1950, CSA C22.2 No. 950, EN60950

Interface —
 LAN: IEEE 802.3 Ethernet 10BASE-T and 100BASE-TX;
 WAN: LR0030A-KIT, LR0032A-KIT: RJ-48C for T1;
 LR0025A-KIT: Dual 75-ohm BNC for DS3;
 LR0030AE-KIT: RJ-48C for E1;
 LR0025AE-KIT: Dual 75-ohm BNC for E3

Connectors —
 LR0030A-KIT: (1) RJ-48C (T1), (1) RJ-45 (10/100 autosensing Ethernet);
 LR0032A-KIT: (2) RJ-48C (T1), (1) RJ-45 (10/100 autosensing Ethernet);
 LR0025A-KIT: (1) Dual BNC coax (DS3), (1) RJ-45 (10/100 autosensing Ethernet);
 LR0030AE-KIT: (1) RJ-48 (E1), (1) RJ-45 (10/100 autosensing Ethernet);
 LR0025AE-KIT: Dual BNC coax (E3), (1) RJ-45 (10/100 autosensing Ethernet)

Indicators — (6) LEDs: T1, E1, DS3, or E3: Link, Alarm, Power;
 Fast Ethernet: 100-Mbps (also indicates 10-Mbps connections), Act, Link

Temperature Tolerance —
 Operating: 32 to 122°F (0 to 50°C);
 Storage: -40 to +158°F (-40 to +70°C)

Humidity Tolerance — 5 to 95%, noncondensing

Altitude Tolerance — -200 to +16,500 ft. (-61 to +5029.2 m)

Power — LR0030A-KIT, LR0032A-KIT, LR0025A-KIT: 100–125-VAC @ 1.0-A external power supply;
 LR0030AE-KIT, LR0025AE-KIT: 200–240-VAC @ 0.5-A external power supply

Size — Each Unit: 1.75"H x 17"W x 18"D (4.4 x 43.2 x 45.7 cm)

Weight — Each Unit: 0.6 lb. (0.3 kg)

**Why Buy From Black Box?
 Exceptional Value. Exceptional
 Tech Support. Period.**

Recognize any of these situations?

- You wait more than 30 minutes to get through to a vendor's tech support.
- The so-called "tech" can't help you or gives you the wrong answer.
- You don't have a purchase order number and the tech refuses to help you.
- It's 9 p. m. and you need help, but your vendor's tech support line is closed.

According to a survey by Data Communications magazine, 90% of network managers surveyed say that getting the technical support they need is extremely important when choosing a vendor. But even though network managers pay anywhere from 10 to 20% of their overall purchase price for a basic service and support contract, the technical support and service they receive falls far short of their expectations—and certainly isn't worth what they paid.

At Black Box, we guarantee the best value and the best support. You can even consult our Technical Support Experts before you buy if you need help selecting just the right component for your application.

Don't waste time and money—call Black Box today.

WHAT'S INCLUDED

- ◆ (1) Single-Port Provider Unit
- ◆ (1) Single-Port Subscriber Unit
- ◆ Power Supplies
- ◆ Users' Manual

Item	Code
T1 Network Extender Kit	LR0030A-KIT
Dual T1 Network Extender Kit	LR0032A-KIT
E1 Network Extender Kit	LR0030AE-KIT
DS3 Network Extender Kit	LR0025A-KIT
E3 Network Extender Kit	LR0025AE-KIT

Free Manuals Download Website

<http://myh66.com>

<http://usermanuals.us>

<http://www.somanuals.com>

<http://www.4manuals.cc>

<http://www.manual-lib.com>

<http://www.404manual.com>

<http://www.luxmanual.com>

<http://aubethermostatmanual.com>

Golf course search by state

<http://golfingnear.com>

Email search by domain

<http://emailbydomain.com>

Auto manuals search

<http://auto.somanuals.com>

TV manuals search

<http://tv.somanuals.com>