

FEATURED MODEL

157-174-ST BLANCOQUADRIS™ Single Lever With Pull-out Spray in Solid Stainless Steel

Please note: the Quadris stainless steel model features real stainless steel (AISI 304).

ADDITIONAL MODELS

157-174-CR Polished Chrome

FEATURES

- Solid brass body (chrome)
- Solid stainless steel (AISI 304)
- Ceramic disc cartridge
- Color coded hot & cold supply lines
- Maximum 2.2 G.P.M. flow rate
- Installation in a 1-3/8" hole
- Stream only

CODE/STANDARDS COMPLIANCE

ASME A112.18.1-2005

NSF 61 Certified in conformance to the Uniform Plumbing Code (UPC)

WARRANTY

Blanco America's Kitchen faucets feature a LIMITED LIFETIME WARRANTY to be free of all manufacturing defects under normal use. See our complete warranty for details.

While Blanco America endeavors to provide accurate information, all dimensions are nominal, cannot be guaranteed, and are subject to change or cancellation. Blanco America assumes no responsibility for use of superseded or voided specifications.

PRODUCT SPECIFICATION

Kitchen faucet to include single lever handle, and solid stainless steel body, ceramic disc cartridge and pull-out spray. Faucet dimensions to be as follows: Reach: 8-3/16"; Spout Height: 6-1/2", and Faucet Height: 7-3/4". Hot and cold supply lines are color coded. Kitchen faucet to be BLANCOQUADRIS™ Single Lever With Pull-out Spray, Model 157-174-_____ in _____ finish.

Polished Chrome 157-174-CR

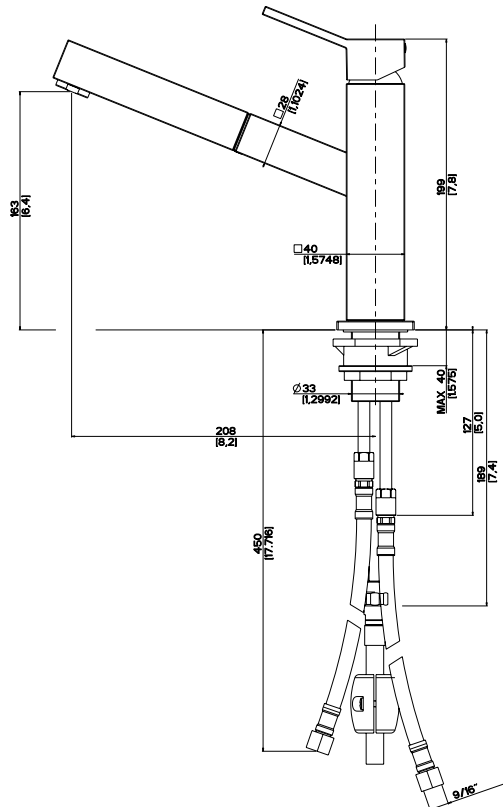
Solid Stainless Steel 157-174-ST



MODEL 157-174

NOMINAL DIMENSIONS

MODEL	REACH	SPOUT HEIGHT	FAUCET HEIGHT
157-174	8-3/16	6-1/2	7-3/4



See next page for exploded parts drawing and parts list.

JOB INFORMATION

Job Name: _____

Contact: _____

Date Specified: _____

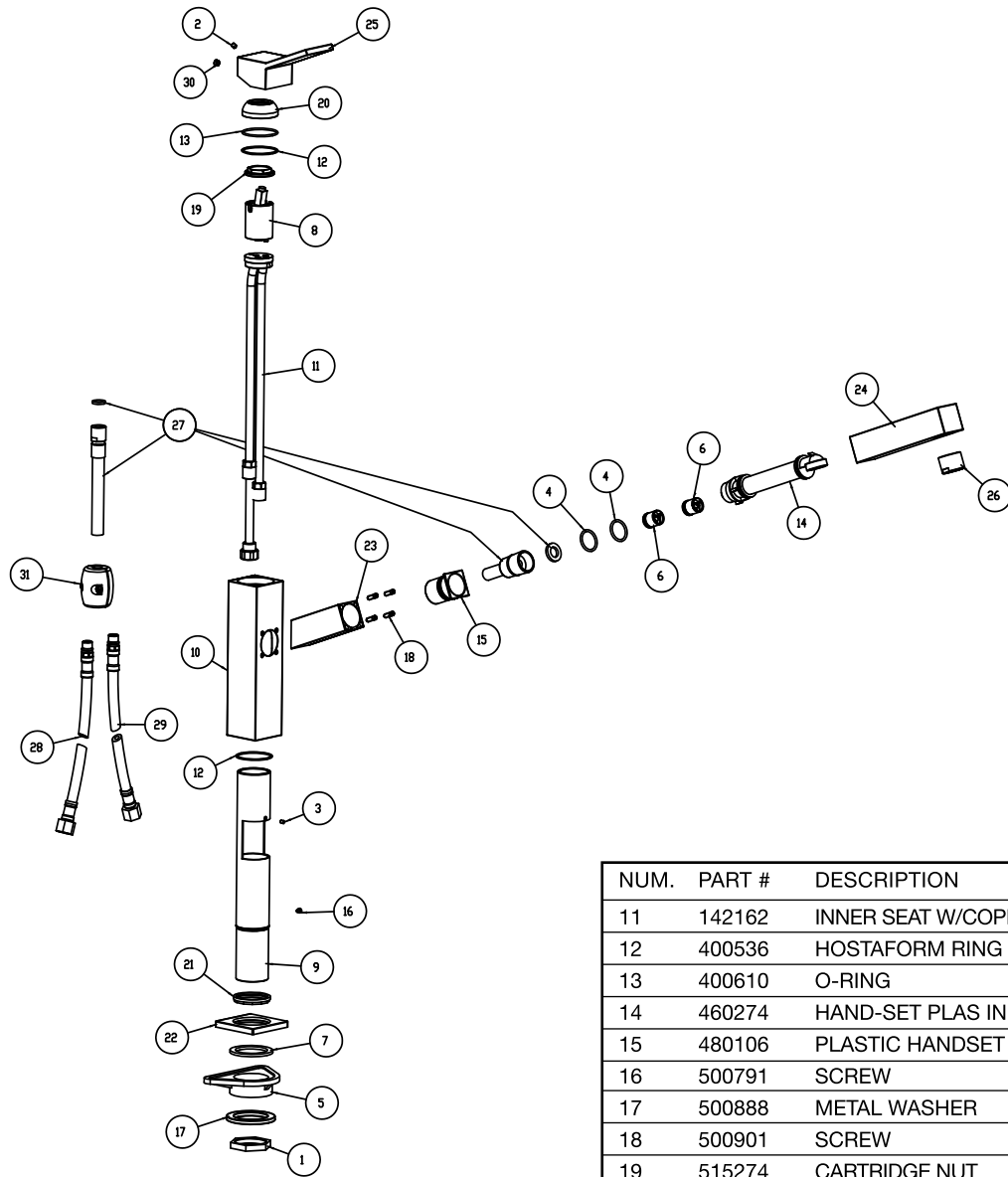
Specifier: _____

Contractor: _____

BLANCO AMERICA
800.451.5782
www.blancoamerica.com

BLANCOQUADRIS™ SINGLE LEVER

MODEL 157-174



NUM.	PART #	DESCRIPTION
1	514481	BACKNUT
2	500350	GRUB SCREW
3	500098	PIN
4	400651	O-RING
5	410146	FIXING SPACER
6	410054	NON RETURN VALVE
7	400511	WASHER
8	650287	CARTRIDGE
9	104872	QUADRIS S INNER BODY
10	104897	CHROME SPRAY OUTER BODY

NUM.	PART #	DESCRIPTION
11	142162	INNER SEAT W/COPPER TUBES
12	400536	HOSTAFORM RING
13	400610	O-RING
14	460274	HAND-SET PLAS INNER LINE
15	480106	PLASTIC HANDSET HOLDET
16	500791	SCREW
17	500888	METAL WASHER
18	500901	SCREW
19	515274	CARTRIDGE NUT
20	515601	CHROME CARTRIDGE COVER
21	515603	BASE RING
22	515606	CHROME FAUCET BASE
23	515642	CHROME HANDSET HOLDER
24	520770	CHROME HANDSET BODY
25	531100	CHROME QUADRIS LEVER
26	604291	FEMALE AERATOR
27	604293	NYLON SS BRAIDED FLX HOSE
28	670271	SS BRAIDED FLEX HOSE RED
29	670272	SS BRAIDED FLEX HOSE BLUE
30	410544	CHROME ABS COVER
31	512362	COUNTERWEIGHT

Free Manuals Download Website

<http://myh66.com>

<http://usermanuals.us>

<http://www.somanuals.com>

<http://www.4manuals.cc>

<http://www.manual-lib.com>

<http://www.404manual.com>

<http://www.luxmanual.com>

<http://aubethermostatmanual.com>

Golf course search by state

<http://golfingnear.com>

Email search by domain

<http://emailbydomain.com>

Auto manuals search

<http://auto.somanuals.com>

TV manuals search

<http://tv.somanuals.com>