

COFFEE BREWER USER GUIDE

Automatic & Pour-Over Decanter Coffee Brewers

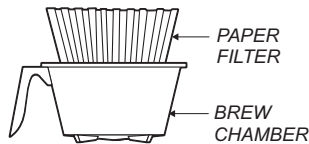
Includes Instructions for
 Brewing Coffee, Cleaning the Brewer and Deliming the Water Tank



Automatic Brewer
 Model 9003 w/optional
 8900-Series Decanters



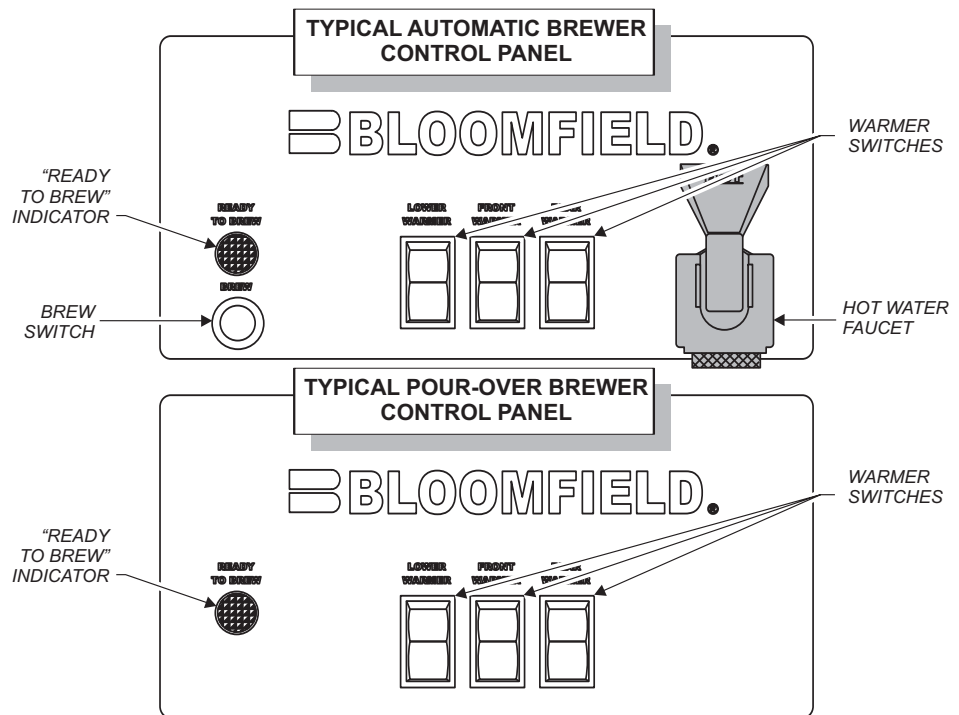
Pour-Over Brewer
 Model 8573 w/optional
 8900-Series Decanters



BREW COFFEE



CAUTION: Water from the brew head is extremely hot. Hot water can cause serious burns.



1. Preparation

Place one (1) genuine Bloomfield paper filter in the brew chamber.
 Add a pre-measured amount of fresh coffee grounds.
 Gently shake the brew chamber to level the bed of grounds.
 Slide the brew chamber into place under the brew head.
 Press the "LOWER WARMER" or "MAIN WARMER" switch ON.

2. Automatic Operation



CAUTION: Prevent overflow. Always use an EMPTY decanter to brew coffee. Overflowing hot coffee can cause serious burns.

Place the appropriate *EMPTY* decanter in place under the brew chamber.

BE sure "READY TO BREW" light is glowing.

Press the "BREW" switch. The solenoid will open for an amount of time determined by the timer setting, admitting a measured quantity of water into the basin.

BLOOMFIELD DECANTER BREWERS

3. Pour-over Operation



CAUTION: Prevent overflow. Always use an **EMPTY** decanter to brew coffee. Overflowing hot coffee can cause serious burns.

NOTE: Any Integrity™ or Koffee-King™ brewer can be used in the pour-over mode.

Place the appropriate *EMPTY* decanter in place under the brew chamber.

BE sure “READY TO BREW” light is glowing.

Fill a decanter with tap water.

Lift the pour-over cover and pour the entire contents of the decanter into the pour-over opening, which will fill the basin.

4. The Brew:

Water from the basin will displace a like amount of heated water from the tank. The hot water will be forced into the brew head where it will spray over the bed of grounds.

Freshly brewed coffee will begin to fill the decanter under the brew chamber.

When the flow and all dripping stops, the coffee is ready to serve.

Press the appropriate warmer switch *ON*. Gently set the decanter of coffee on the warmer plate.



5. Empty the Brew Basket:



CAUTION: Brew chamber and contents will be very hot. Use the handle to manipulate the hot brew chamber.

Discard the grounds and the paper filter. Rinse the brew chamber under clear water.

When the “READY TO BREW” light glows, the brewer is ready for another brew cycle.

6. Hot Water Faucet (Automatic Brewers Only):

Hot water may be drawn from the hot water faucet at any time by lifting the red handle. Hot water flow will shut off automatically when the handle is released.

IMPORTANT:

Excessive use of the hot water faucet during a brew will lower the temperature of the brew water and compromise the quality of the coffee product.

CLEANING



CAUTION: Burn Hazard

Brewing and serving temperatures of coffee are extremely hot. Unplug brewer and allow to cool before cleaning



CAUTION: Electric Shock Hazard

Do not submerge or immerse brewer in water.

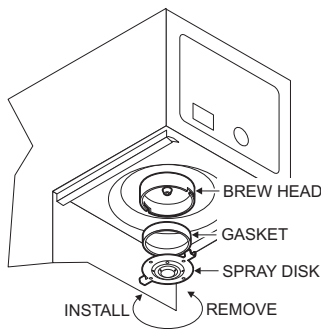
IMPORTANT:

DO NOT use steel wool, sharp objects, or caustic, abrasive or chlorinated cleansers to clean the brewer or decanters.

PRECAUTIONS: Disconnect brewer from electric power.
Allow brewer to cool.

FREQUENCY: Daily

TOOLS: Mild Detergent, Clean Soft Cloth or Sponge
Bristle Brush.



1. Disconnect brewer from electric power. Allow brewer to cool before cleaning.
2. Remove and empty decanter.
3. Remove and empty brew chamber.
4. Remove the spray disk from the brew head. Press up on the spray disk ears, then turn the disk to the left to unlatch. Remove the gasket from inside the brew head.
5. Wipe inside of brew head and area around the brew head with a soft clean cloth or sponge moistened with clean water.
6. Wash the spray disk in a sink using warm water and a mild detergent. A bristle brush may be used to clear clogged spray holes. Rinse the spray disk with clean water and allow to air dry.
7. Wash the brew chamber in a sink using warm water and a mild detergent. A bristle brush may be used to clean the inside. Rinse with clean water and allow to air dry.
8. Wipe the exterior of the brewer and all warmer plates with a soft clean cloth or sponge moistened with clean water.
10. Reinstall the gasket *INSIDE* the brew head, then reinstall the spray disk.
11. Reinstall the brew chamber.
12. Clean decanters by filling with warm soapy water. Scrub the inside with a bottle brush. Empty, then rinse with clean water. Wipe the exterior with a soft clean cloth or sponge moistened with clean water. Invert and allow to air dry.

Procedure is complete

DELIME THE WATER TANK



CAUTION - CHEMICAL BURN HAZARD

Deliming chemicals may be caustic. Wear appropriate protective gloves and goggles during this procedure. Never siphon deliming chemicals or solutions by mouth.

IMPORTANT:

This operation to be performed by qualified service personnel *ONLY!*

IMPORTANT:

DO NOT spill, splash or pour water or deliming solution into or over any internal component other than the inside of the water tank.

IMPORTANT:

DO NOT allow any internal components to come into contact with the deliming solution. Take care to keep all internal components dry.

PRECAUTIONS: Disconnect brewer from electric power.
Allow brewer to cool.

FREQUENCY: As required (Brewer slow to heat)

TOOLS: Deliming Solution
Protective Gloves, Goggles & Apron
Mild Detergent, Clean Soft Cloth or Sponge
Bristle Brush, Bottle Brush
Large Sink (or other appropriate work area)

-
1. Disconnect brewer from the electrical supply. Turn off the water shut-off valve and disconnect the water supply line from the brewer inlet fitting.
 2. Disconnect faucet plumbing. Remove the tank lid assembly.
 3. Remove the water tank from the brewer body by lifting straight up. Empty all water from the tank. Set the tank back into the brewer.
 4. Mix 2 quarts of deliming solution according to the manufacturer's directions. Carefully pour the deliming solution into the water tank. Lower the lid assembly back onto the tank. Allow to sit for 30 minutes, or as directed by the chemical manufacturer.
 5. At end of soaking period, remove lid assembly from tank. Thoroughly rinse internal components of lid assembly with clear water. Using a stiff bristle brush, scrub the heating element to remove lime and calcium build-up. Rinse with clean water. Store lid assembly in a safe location.
 6. Remove the tank from the brewer and empty. Using a stiff bristle brush, scrub the interior of the water tank to remove lime and calcium build-up. Rinse with clean water.
 7. Set the tank back into the brewer. Reassemble faucet plumbing to the tank lid, and the tank lid to the water tank. Make sure the gasket is properly in place, then reinstall the hold-down strap.

Free Manuals Download Website

<http://myh66.com>

<http://usermanuals.us>

<http://www.somanuals.com>

<http://www.4manuals.cc>

<http://www.manual-lib.com>

<http://www.404manual.com>

<http://www.luxmanual.com>

<http://aubethermostatmanual.com>

Golf course search by state

<http://golfingnear.com>

Email search by domain

<http://emailbydomain.com>

Auto manuals search

<http://auto.somanuals.com>

TV manuals search

<http://tv.somanuals.com>