



# Energy Saver

## High Efficiency Condensing Gas Water Heaters

*Up to 99.1% Thermal Efficient*



- ◆ 60 to 100 gallons/125,000 to 399,999 BTU
- ◆ PVC Conventional, Through-the Wall, or Direct Vent
- ◆ Low NOx Premix Power Burner
- ◆ Non-CFC foam insulation
- ◆ Electronic ignition and controls
- ◆ Zero inch clearance to combustibles
- ◆ Glass-lined storage tank
- ◆ Hand hole cleanout
- ◆ Sediment reduction system
- ◆ Standard and ASME construction
- ◆ NSF kit available
- ◆ 3" Concentric vent kit available
- ◆ Complies with SCAQMD low NOx requirements
- ◆ Design certified by CSA International (formerly AGA/CGA)
- ◆ 3-Year Limited Tank/1-Year Limited Parts Warranties

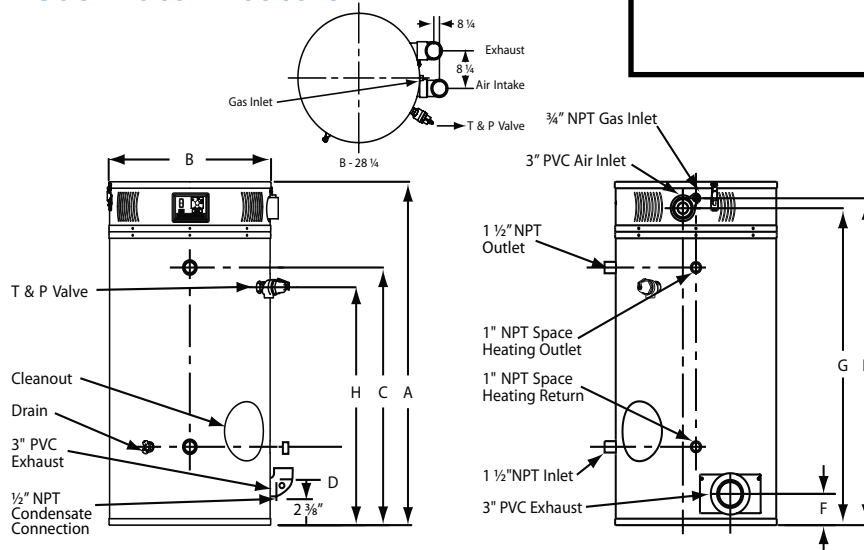
*Whisper Quiet*





## High Efficiency Condensing Gas Water Heaters

This product is available from:



NOTE: Diagrams are for both the 60 and 100 gallon models

MODEL NUMBER	DIMENSIONS IN INCHES								
	A HT.	B DIA.	C HOT OUT	D COLD IN	E GAS CONN.	F FL. TO VENT OUTLET	G FL. TO AIR INTAKE	H FL. TO T&P VALVE	WATER CONN. DIA.
60 Gallon Models	57	28 1/4	42	13	53 1/2	5	52 1/2	40	1 1/2
100 Gallon Models	77 5/8	28 1/4	63	13	74 3/4	5	74.75	60	1.5

MODEL NUMBER	STORAGE (GAL)	RATED INPUT (BTUH)	THERMAL EFF %	1ST HR DEL GAL. @ 100° F RISE	RECOVERY GPH @ DEGREE RISE			MAX 3" PVC, ABS & CPVC	MAX 4" PVC, ABS & CPVC	SHIPPING WT (LBS)
					40° F	100° F	140° F			
60HEC-125	60	125,000	96.0%	187	364	145	104	120 ft	170 ft	570
60HEC-150	60	150,000	93.0%	211	423	169	121	100 ft	150 ft	570
60HEC-199	60	199,999	92.0%	265	558	223	159	80 ft	130 ft	900
100HEC-150	100	150,000	99.1%	250	450	180	129	120 ft	170 ft	900
100HEC-199	100	199,999	98.5%	309	597	239	171	100 ft	150 ft	900
100HEC-250	100	250,000	97.0%	364	735	294	210	80 ft	130 ft	900
100HEC-300	100	300,000	92.0%	405	836	335	239	60 ft	110 ft	900
100-HEC-399	100	399,999	93.0%	521	1127	451	322	50 ft	100 ft	900

**T&P Valve:** Factory Installed  
**Brass Drain Valve:** Factory Installed  
**Dielectric Fittings:** Factory Installed  
**Magnesium Anode Rods:** Factory Installed

**Pressures (all):** Working Pressure, 150 psi; Tested Pressure, 300 psi

**AMP Draw Range:** = 1.0 to 1.8 amps and 7.0 amps for 100HEC-399; 115V A.C. required

**Warning:** Installation on hard surface only. Installation should be in accordance with all national and/or local codes. In the absence of local codes, refer to NFPA 54 or ANSI Z21.10.1.

**Caution:** The recommended maximum hot water temperature setting for normal residential use is 120°F. Bock recommends a tempering valve or anti-scald valve be installed and used according to the manufacturer's directions to prevent scalding.

### Determining required vent length

1. Determine the total length of straight vent pipe (in feet) required for both the intake and the exhaust.
2. Add 5 feet of venting for every 90° elbow.
3. Add 2½ feet of venting for every 45° elbow.
4. Total vent length cannot exceed "Max Length" in the above chart.
5. Air intake cannot exceed exhaust by more than 30 feet in any venting situation.  
**Do not include the 3" exhaust elbow or vent terminals in determining maximum vent length.**



[www.bockwaterheaters.com](http://www.bockwaterheaters.com)  
 110 South Dickinson Street, Madison, Wisconsin 53703  
 Toll Free 800.794.2491 • Phone 608.257.2225 • Fax 608.257.5304



80027 Rev 6/08

## Free Manuals Download Website

<http://myh66.com>

<http://usermanuals.us>

<http://www.somanuals.com>

<http://www.4manuals.cc>

<http://www.manual-lib.com>

<http://www.404manual.com>

<http://www.luxmanual.com>

<http://aubethermostatmanual.com>

Golf course search by state

<http://golfingnear.com>

Email search by domain

<http://emailbydomain.com>

Auto manuals search

<http://auto.somanuals.com>

TV manuals search

<http://tv.somanuals.com>