

**SWITCHES**

**Models CA-10/11/13/14**

**CA-10 CALL SWITCH**

Model CA-10 is a momentary, rocker-type room switch designed for use with Model SBL Switchbanks (with visual call-in annunciators) or Model STA-20AL Intercom Systems. When the rocker knob is depressed, a lamp on the SBL Switchbank in the school system central console (or the STA-20AL master unit) lights, designating the calling station. When the rocker knob is released, the light remains on until the console or master station operator places the room switch in the communicate position.

Model CA-10 is designed for flush mounting in a standard single-gang outlet box. Figure 1 illustrates proper connections. All wires used to connect the switch must be insulated and at least #22 AWG (Bogen BB8763, or equivalent).

Wire the switches as follows:

1. Connect unshielded wire between corresponding annunciator terminal on rear of SBL Switchbank in the school console (or related junction box terminal for STA-20AL master unit) and red wire at CA-10 switch.
2. Connect black wire to room speaker system ground (shield of speaker line). Where speaker lines run through switch box, the black wire supplied is sufficient to make the connection. Otherwise, run a black, insulated #22AWG wire from switch to shield of speaker line.

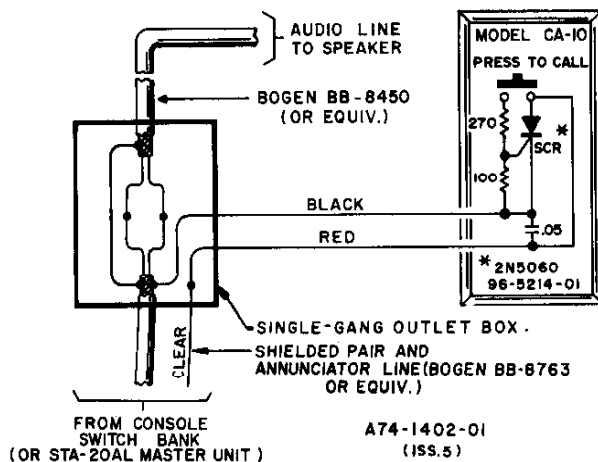


Figure 1 — Model CA-10, connecting diagram

*Caution*

*Observe color code: red for annunciator line, black for system ground.*

**CA-11 CALL-PRIVACY SWITCH**

Bogen Model CA-11 is a three-position rocker switch designed to provide annunciator call and privacy control from the classroom. Privacy function is standard in all School Console Series and in Model STA-20AL Intercom Systems. The Model CA-11 has two fixed positions, TALK and PRIVATE. In the TALK position, the remote station has normal, non-private operation. In the PRIVATE position, the remote station cannot be monitored from the console or master unit.

Model CA-11 also has a momentary PRESS TO CALL position, used with Model SBL Switchbanks (having annunciator lights) or Model STA-20AL Intercom Systems. When the rocker knob is depressed, a lamp at the school system central console (or STA-20AL master unit) lights, designating the calling station. When the rocker knob is released, the light remains on until the console or master station operator places the room switch in the communicate position.

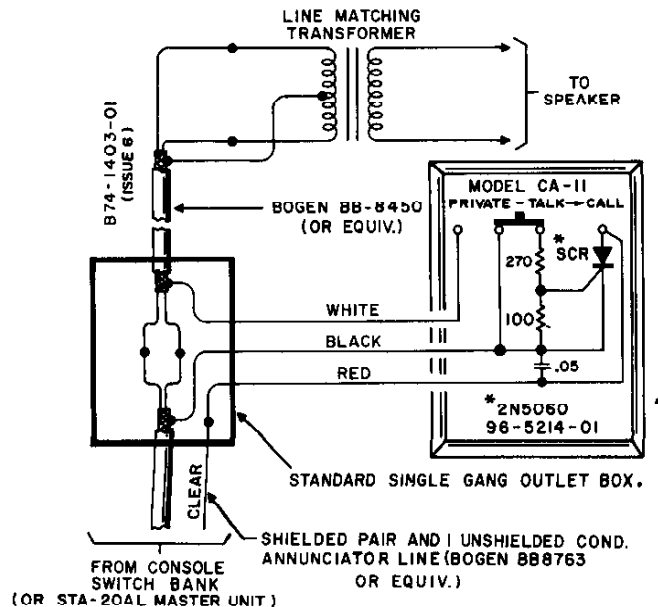


Figure 2 — Model CA-11, connecting diagram

Model CA-11 is designed for flush mounting in standard single-gang outlet boxes. Figure 2 illustrates proper connections. In installations where the speaker line runs through the switch box, the leads supplied with the switch are sufficient to make connections. Otherwise, run three unshielded conductors from switch to cable. All wires used to connect the switch must be insulated and at least #22AWG (Bogen BB8763, or equivalent).

Wire the switch as follows:

1. Connect unshielded wire between corresponding annunciator terminal on rear of SBL Switchbank in school console (or related junction box terminal when using STA-20AI master unit), and red wire at CA-11 switch.
2. Connect white wire to center tap of room speaker line-matching transformer. This connection may be made via the speaker cable shield, as shown in Figure 2.
3. Connect black wire to audio system ground at the shield of audio cable from console, (or STA-20AL master unit) as shown in Figure 2.

**Caution**

Observe color code: red for annunciator line, black for system ground, white for privacy ground.

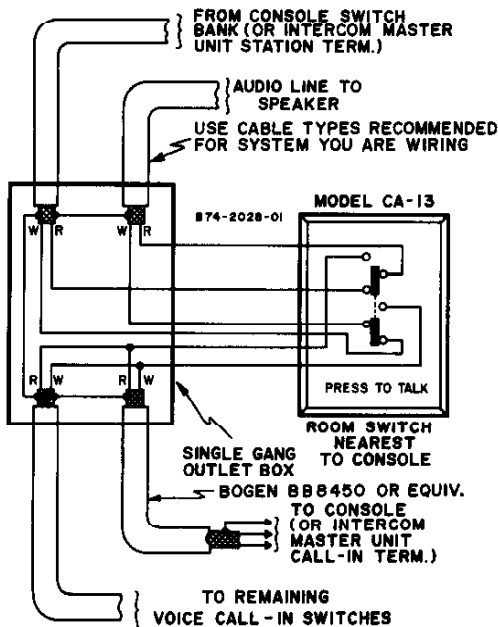


Figure 3 — Model CA-13, connecting diagram

**CA-13 VOICE CALL-IN SWITCH**

Bogen Model CA-13 is a two-position, spring-return switch designed to provide a voice call-in function for a classroom or remote location. It is applicable to the standard School, Model STA-20A or MRX Series intercom systems, as well as others.

When the rocker knob is held down in the PRESS TO TALK position, the classroom or remote speaker is transferred to the call-in line of the console or master unit.

Model CA-13 is designed for flush mounting in a standard single-gang outlet box. Figure 3 illustrates typical connections. The CA-13 is wired in series with the speaker line which normally connects the console or master station to the classroom or remote speaker. An additional shielded pair is connected to the call-in line of the console or master unit. Where more than one CA-13 switch is installed in the system, the switches are connected in parallel by either a looped line from switch to switch or by "home runs" from each switch.

**CA-14 CALL SWITCH**

Model CA-14 is a momentary rocker-type switch, designed for use with Model PI-10 Power Intercom. Model PI-10 incorporates visual call-in annunciators. When the rocker knob is depressed, an indicator at the master station is actuated, designating the calling remote station. When the rocker knob is released, the indicator remains on until the master station operator places the station switch in the communicate position.

The CA-14 is designed for flush mounting in a standard single-gang outlet box. Figure 4 illustrates proper connections. All wires used to connect the switch must be insulated and at least #20AWG (Refer to PI-10 Installation Manual).

Wire the switches:

Connect red wires from CA-14 to wires from PI-10 remote station output terminals. Connect black wires to speaker. (Polarity need not be observed.)

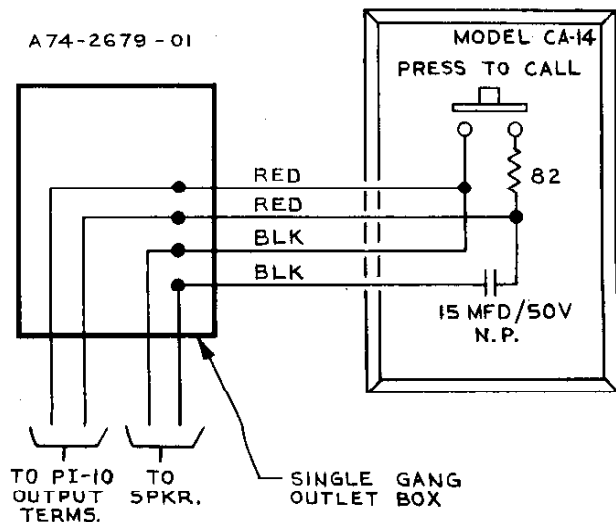


Figure 4 — Model CA-14, connecting diagram

## Free Manuals Download Website

<http://myh66.com>

<http://usermanuals.us>

<http://www.somanuals.com>

<http://www.4manuals.cc>

<http://www.manual-lib.com>

<http://www.404manual.com>

<http://www.luxmanual.com>

<http://aubethermostatmanual.com>

Golf course search by state

<http://golfingnear.com>

Email search by domain

<http://emailbydomain.com>

Auto manuals search

<http://auto.somanuals.com>

TV manuals search

<http://tv.somanuals.com>