

BOSE[®]

Owner's Guide
Guía de usuario
Notice d'utilisation



SoundDock[®] **10** *Bluetooth*[®]

digital music system

SAFETY INFORMATION

Please read this owner's guide

Please take the time to follow the instructions in this owner's guide carefully. It will help you set up and operate your system properly and enjoy its advanced features. Please save this owner's guide for future reference.

WARNINGS:

- To reduce the risk of fire or electrical shock, do not expose the product to rain or moisture.
- To prevent electric shock, match the wide blade of the line cord plug to the wide slot of the AC (mains) receptacle. Insert fully.
- Do not expose this apparatus to dripping or splashing, and do not place objects filled with liquids, such as vases, on or near the apparatus. As with any electronic product, use care not to spill liquids into any part of the system. Liquids can cause a failure and/or a fire hazard.
- Do not place any naked flame sources, such as lighted candles, on or near the apparatus.
- Keep the remote control battery away from children. It may cause a fire or chemical burn if mishandled. Do not recharge, disassemble, heat above 100°C (212°F), or incinerate. Dispose of used batteries promptly. Replace only with a battery of the correct type and model number.
- Danger of explosion if battery is incorrectly replaced. Replace only with an agency approved (ex. UL) CR2032 or DL2032 3-volt lithium battery.
- Contains small parts that may be a choking hazard. Not suitable for children under age 3.

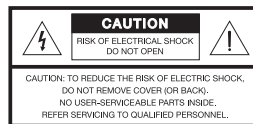


Please dispose of used batteries properly, following any local regulations. Do not incinerate.



CE This product conforms to all EU Directive requirements. The complete Declaration of Conformity can be found at www.Bose.com/compliance.

CAUTIONS:



The lightning flash with arrowhead symbol within an equilateral triangle alerts the user to the presence of uninsulated dangerous voltage within the system enclosure that may be of sufficient magnitude to constitute a risk of electric shock.



The exclamation point within an equilateral triangle alerts the user to the presence of important operating and maintenance instructions in this owner's guide.

Notes:

- The product label is located on the back of the product.
- Where the mains plug or appliance coupler is used as the disconnect device, such disconnect device shall remain readily operable.
- This product must be used outdoors. It is neither designed nor tested for use outdoors, in recreation vehicles, or on boats.
- Make no modifications to the system or accessories. Unauthorized alterations may compromise safety, regulatory compliance, and system performance.

Class B emissions

This Class B digital apparatus meets all requirements of the Canadian Interference-Causing Equipment Regulations (Canada only).

If applicable, the radio communication device incorporated into this apparatus meets all requirements of the Industry Canada standard RSS-310 (Canada only).

IMPORTANT SAFETY INSTRUCTIONS

1. **Read these instructions** – for all components before using this product.
2. **Keep these instructions** – for future reference.
3. **Heed all warnings** – on the product and in the owner's guide.
4. **Follow all instructions.**
5. **Do not use this apparatus near water or moisture** – Do not use this product near a bathtub, washbowl, kitchen sink, laundry tub, in a wet basement, near a swimming pool, or anywhere else that water is present.
6. **Clean only with a dry cloth** – and as directed by Bose Corporation. Unplug this product from the wall outlet before cleaning.
7. **Do not block any ventilation openings. Install in accordance with the manufacturer's instructions** – To ensure reliable operation of the product and to protect it from overheating, put the product in a position and location that will not interfere with its proper ventilation. For example, do not place the product on a bed, sofa, or similar surface that may block the ventilation openings. Do not put it in a built-in system, such as a bookcase or a cabinet that may keep air from flowing through its ventilation openings.
8. **Do not install near any heat sources, such as radiators, heat registers, stoves or other apparatus (including amplifiers) that produce heat.**
9. **Only use attachments/accessories specified by the manufacturer.**
10. **Protect the power cord from being walked on or pinched, particularly at plugs, convenience receptacles, and the point where they exit from the apparatus.**
11. **Unplug this apparatus during lightning storms or when unused for long periods of time** – to prevent damage to this product.
12. **Refer all servicing to qualified service personnel. Servicing is required when the apparatus has been damaged in any way: such as power supply cord or plug is damaged; liquid has been spilled or objects have fallen into the apparatus; the apparatus has been exposed to rain or moisture, does not operate normally, or has been dropped** – Do not attempt to service this product yourself. Opening or removing covers may expose you to dangerous voltages or other hazards. Please call Bose to be referred to an authorized service center near you.

13. **To prevent risk of fire or electric shock, avoid overloading wall outlets, extension cords, or integral convenience receptacles.**
14. **Do not let objects or liquids enter the product** – as they may touch dangerous voltage points or short-out parts that could result in a fire or electric shock.
15. **See product enclosure for safety related markings.**
16. **Use proper power sources** – Plug the product into a proper power source, as described in the operating instructions or as marked on the product.

Information about products that generate electrical noise

U.S.A. only

This equipment has been tested and found to comply with the limits for a Class B digital device, pursuant to Part 15 of the FCC rules. These limits are designed to provide reasonable protection against harmful interference in a residential installation. This equipment generates, uses, and can radiate radio frequency energy and, if not installed and used in accordance with the instructions, may cause harmful interference to radio communications. However, this is no guarantee that interference will not occur in a particular installation. If this equipment does cause harmful interference to radio or television reception, which can be determined by turning the equipment off and on, you are encouraged to try to correct the interference by one or more of the following measures:

- Reorient or relocate the receiving antenna.
- Increase the separation between the equipment and receiver.
- Connect the equipment to an outlet on a different circuit than the one to which the receiver is connected.
- Consult the dealer or an experienced radio/TV technician for help.

Any changes to this device not expressly approved by Bose Corporation may void the user's authority to operate this device.

Canada

This Class B digital apparatus complies with the Canadian ICES-003 Class B specification.

Names and Contents of Toxic or Hazardous Substances or Elements

Part Name	Toxic or Hazardous Substances and Elements					
	Lead (Pb)	Mercury (Hg)	Cadmium (Cd)	Hexavalent (CR(VI))	Polybrominated Biphenyl (PBB)	Polybrominated diphenylether (PBDE)
PCBs	X	0	0	0	0	0
Metal parts	X	0	0	0	0	0
Plastic parts	0	0	0	0	0	0
Speakers	X	0	0	0	0	0
Cables	X	0	0	0	0	0

0: Indicates that this toxic or hazardous substance contained in all of the homogeneous materials for this part is below the limit requirement in SJ/T 11363-2006.

X: Indicates that this toxic or hazardous substance contained in at least one of the homogeneous materials used for this part is above the limit requirement in SJ/T 11363-2006.

Please complete and retain for your records

Serial number (on the back of the product): _____

Model number (on the back of the product): _____

Purchase date: _____

Dealer name: _____

Dealer phone: _____

Please keep your sales receipt with this owner's guide.

Made for:

- iPod touch (1st, 2nd, 3rd and 4th generation)
- iPod nano (1st, 2nd, 3rd, 4th, 5th and 6th generation)
- iPod classic
- iPod with video
- iPhone 4S
- iPhone 4
- iPhone 3GS
- iPhone 3G
- iPhone

SoundDock and the distinctive design of the SoundDock 10 *Bluetooth*[®] system are registered trademarks of Bose Corporation in the U.S. and other countries. iPhone, iPod, iPod classic, iPod nano, and iPod touch are trademarks of Apple Inc., registered in the U.S. and other countries.

“Made for iPod” and “Made for iPhone” mean that an electronic accessory has been designed to connect specifically to iPod or iPhone, respectively, and has been certified by the developer to meet Apple performance standards. Apple is not responsible for the operation of this device or its compliance with safety and regulatory standards. Please note that the use of this accessory with iPod or iPhone may affect wireless performance.

The *Bluetooth*[®] word mark and logos are registered trademarks owned by Bluetooth SIG, Inc. and any use of such marks by Bose Corporation is under license. Other trademarks and trade names are those of their respective owners.

All other marks are registered trademarks and trademarks of Bose Corporation.

SOUNDdock® 10 *BLUETOOTH*® DIGITAL MUSIC SYSTEM

Introduction

Thank you for purchasing the SoundDock® 10 *Bluetooth*® digital music system. Offering a high-quality, room-filling sound, the SoundDock 10 *Bluetooth* digital music system can easily serve as the primary digital music system in your home.

Outstanding features:

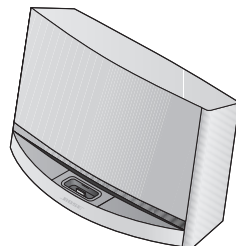
- Proprietary acoustic design delivers full, rich sound
- Remote controls basic system functions including source selection
- Auxiliary input allows use with other audio devices
- Compatible with most iPhone and iPod models
- Charges your device while it is docked
- Provides video output connection for a TV or monitor

Unpacking

Check the carton for all the parts shown.

Save the carton and packing materials, which provide the safest way to transport this product.

If any part of the product appears to be damaged, do not attempt to use it. Contact your authorized Bose dealer immediately or call Bose Customer Service. Refer to the address list enclosed in the carton for contact information.



SoundDock 10 *Bluetooth* digital music system



Remote control



AC power cord

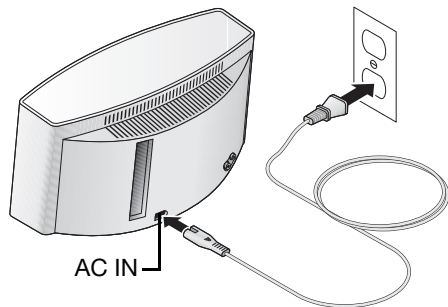
WARNING: To avoid danger of suffocation, keep plastic bags out of the reach of children.

Now is a good time to find the serial number on the back of your SoundDock 10 *Bluetooth* system and record it on the previous page.

SOUNDDOCK® 10 BLUETOOTH® DIGITAL MUSIC SYSTEM

Setting up your system

1. Place your SoundDock 10 *Bluetooth* digital music system on a flat, stable surface.
2. Plug the small end of the AC power cord into the AC power connector on the back of the unit.
3. Plug the other end into a live AC (mains) outlet. After you hear two short tones from your SoundDock 10 *Bluetooth* system, it is ready to use.



Note: The tonal quality of your SoundDock 10 *Bluetooth* system will vary with placement. For example, moving the system toward a corner will increase bass response; moving it away from the corner will decrease bass response.

CAUTION: Do not cover the ventilation openings of the product. The slots on the top provide ventilation for the built-in electronic circuitry and shall not be blocked.

Note: When handling the SoundDock 10 *Bluetooth* system, the front structure containing the dock for iPod/iPhone may feel loose. This is normal. This part of the system is intentionally designed to prevent speaker vibration from interfering with the operation of your iPod/iPhone.

System on/off control

You can turn on your SoundDock 10 *Bluetooth* system in any of the following three ways:

- Dock a device.
- Press any key except OFF on the Bose® remote.
- Press any key on the docked device.

To turn off the SoundDock 10 *Bluetooth* system, do either one of the following:

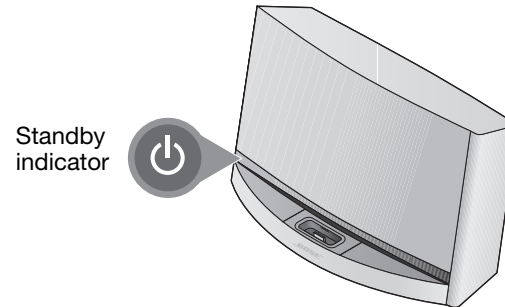
- Press OFF on the SoundDock 10 *Bluetooth* remote.
- Remove the docked device.

Standby

The SoundDock 10 *Bluetooth* digital music system goes into two different standby modes. The first is a charging standby ready mode. This is the mode it enters when you first plug in AC power. It charges your iPod/iPhone and remains ready to play. The second is low power standby. It will not enter this mode with an iPod/iPhone in the dock. When in low power standby, the standby indicator glows on the front panel.

- When you press OFF on the Bose remote the system will stop playing music and go into charging standby. Pressing the OFF again on the Bose remote will put the system into low power standby and the indicator will light only when your iPod/iPhone is not in the dock.
- When you remove your docked device the system will go into charging standby and no indicators will glow and after 30 minutes of no other commands will go into low power standby.

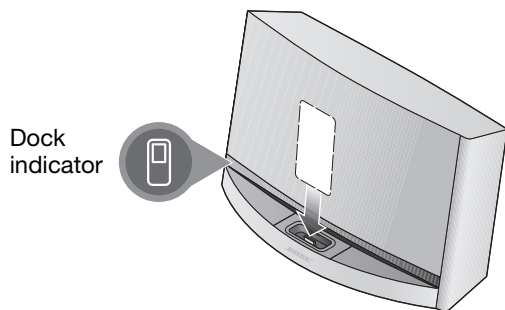
- If using *Bluetooth* and there is no device connected or audio playing the system will go into low power standby after 30 minutes.
- If AUX is selected and there is no audio from the device connected to AUX IN, or the plug is removed from the AUX in connector the system goes into low power standby after 30 minutes.



SOUNDdock® 10 BLUETOOTH® DIGITAL MUSIC SYSTEM

Listening to a docked device

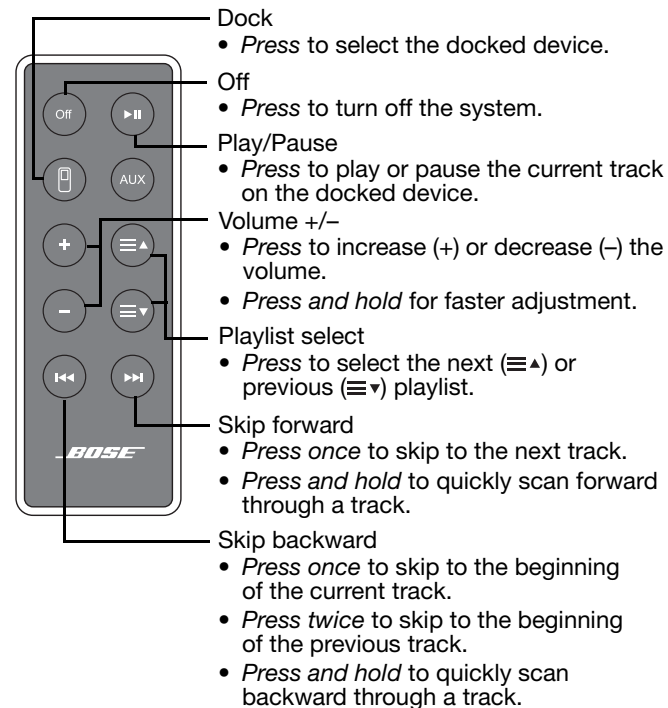
1. Insert your iPod or iPhone into the dock. The dock indicator glows on the front panel.



Note: When plugged in, your SoundDock 10 Bluetooth digital music system charges your docked iPod or iPhone.

Note: Your SoundDock 10 Bluetooth digital music system comes with a universal dock adapter that can accommodate most iPod and iPhone models. (refer to details on page iv). If you prefer to use the adapter that came with your iPod, see "Changing the dock adapter" on page 7.

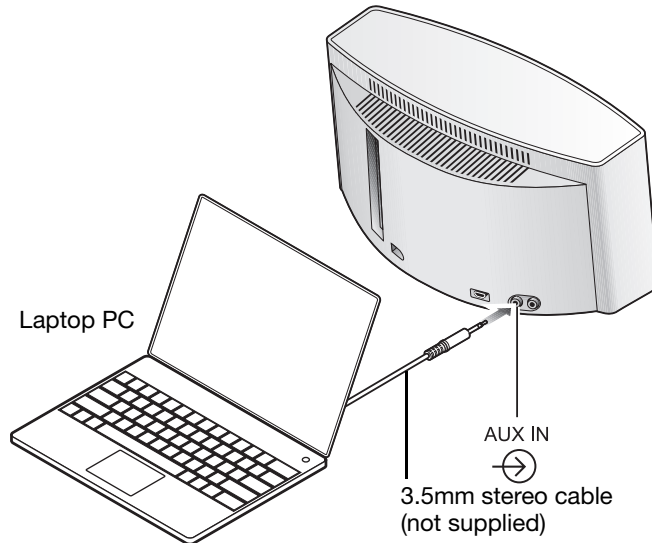
2. Use the Bose® remote to control system functions.



Listening to other devices

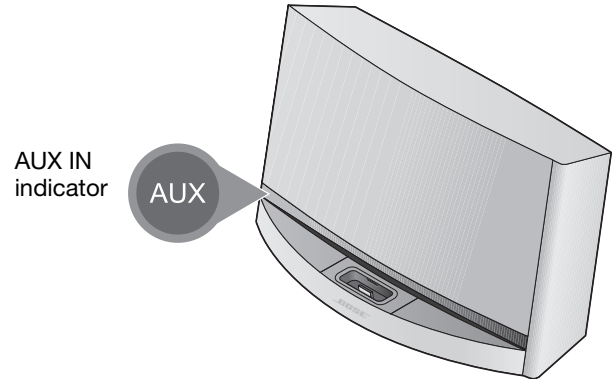
You can connect the audio output of a PC, CD player, TV, MP3 player, or other type of audio device to the AUX IN connector. The AUX IN connector accepts a 3.5mm stereo cable plug.

1. Using the appropriate stereo cable, connect your audio device to the AUX IN connector.



Note: A device must be plugged into the AUX IN connector in order to select the AUX source.

2. Press AUX on the Bose® remote. The AUX IN indicator glows on the front panel.

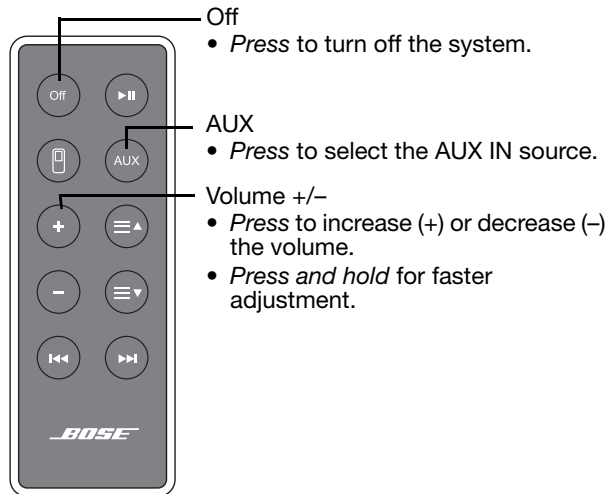


3. Turn on the audio device and start playing music.
4. Set the volume of the device to near maximum.

Note: The SoundDock 10 Bluetooth system is designed to provide the best audio performance without any additional audio effects. Make sure all audio effects are turned off in the connected device.

SOUNDDOCK® 10 BLUETOOTH® DIGITAL MUSIC SYSTEM

5. Use the Bose® remote to increase or decrease the system volume.



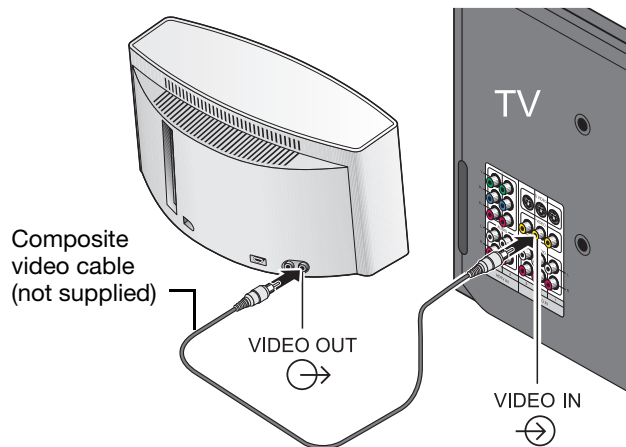
Notes:

- The Bose remote will not control devices connected to AUX IN.
- A docked iPod/iPhone will continue charging while you listen to a device connected to AUX IN.

Using the video output

When playing a docked iPhone or iPod with video capability, the VIDEO OUT connector provides a composite video output signal that can be viewed on a TV or computer monitor.

To view this video output on your TV or monitor, connect the VIDEO OUT to a video input using a standard composite video cable. Be sure to select the correct video input on your TV.



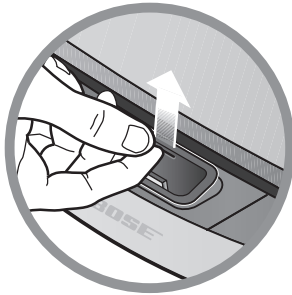
Changing the dock adapter

The SoundDock 10 *Bluetooth* digital music system is ready for use with a variety of iPhone and iPod models.

If you prefer to use the dock adapter included with your iPod:

1. Make sure the power cord is disconnected.
2. Lift up the back edge of the adapter and remove it from the dock.

You may need to insert a thin, non-metallic utensil into the slot to provide the required leverage to lift the back edge.



Care and maintenance

Periodic maintaining may include cleaning your product and replacing the remote control batteries.

Cleaning

To clean the exterior surface of your product, you can wipe it using a soft, dry cloth. You can also lightly vacuum the grille.

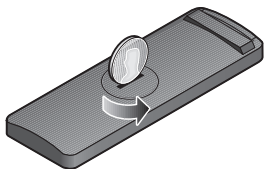
- Do not use solvents, chemicals, or sprays.
- Do not allow liquids to spill or objects to drop into any openings.

SOUNDdock® 10 BLUETOOTH® DIGITAL MUSIC SYSTEM

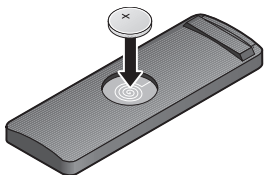
Replacing the remote control batteries

When the remote stops operating or its range seems reduced, it is time to change the remote battery.

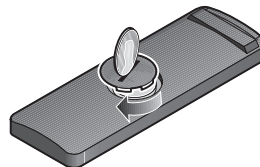
1. Using a coin, turn the battery cover slightly counter-clockwise.



2. Remove the used battery and insert the new one (CR2032 or DL2032). Refer to page ii for battery information and safety instructions. Be sure the battery is flat side up, with the positive (+) symbol in view.

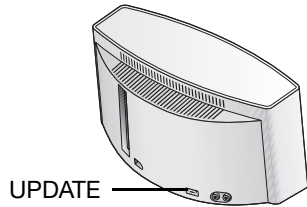


3. Reseat the cover and turn it clockwise until it locks into place.



UPDATE connector

The UPDATE connector on the back of your SoundDock10 *Bluetooth* system is only for potential software updates from Bose.



Troubleshooting

The following troubleshooting table should help solve operating problems with your SoundDock 10 *Bluetooth* system. However, before using the table, do the following:

- Remove your iPod/iPhone from the dock and check for obstructions on the dock connector and on your iPod/iPhone. Then firmly reseat it in the dock.
- Make sure you have the latest software on your iPod/iPhone.

SOUNDDOCK® 10 BLUETOOTH® DIGITAL MUSIC SYSTEM

Problem	What to do
I do not hear any sound from the SoundDock 10 <i>Bluetooth</i> system.	<ul style="list-style-type: none"> • Make sure the power cord is properly connected on the back of the SoundDock 10 <i>Bluetooth</i> system and that the system is plugged into a live AC outlet. • Press the source button (dock or AUX) on the remote for the source you are using. • Press the Play/Pause button on the remote control. • Increase the system volume. • If listening to a device connected to AUX IN, increase the volume on the device. • Remove your iPod/iPhone from the dock, wait 5 seconds, then reset it. • Unplug the power cable for 1 minute, then plug it back in to reset the system.
My iPod/iPhone is not charging.	<ul style="list-style-type: none"> • Make sure the power cord is properly connected on the back of the unit. • Make sure the system is plugged into a live AC outlet.
I cannot navigate the playlists on my iPod/iPhone.	<ul style="list-style-type: none"> • Make sure that you have created playlists on your iPod/iPhone.
My iPod/iPhone does not respond to the remote control.	<ul style="list-style-type: none"> • Make sure there is a clear path between the remote and the system. • Using a clean, dry cloth, wipe the small lens on the front end of the remote. • Try the remote from a different location. You may be experiencing interference from bright room lights or sunlight. • Remove your iPod/iPhone from the dock, wait 5 seconds, then reset it. • Make sure the remote battery is installed correctly or replace it if it is old (refer to page 8).
My system does not respond to any controls.	<ul style="list-style-type: none"> • Unplug the power cable for 1 minute, then plug it back in to reset the system. • Contact Bose® Customer Service.

Customer service

For questions about the SoundDock 10 *Bluetooth* digital music system, contact your local Bose dealer. To contact Bose directly, see the address list included in the carton.

Limited warranty

Your SoundDock 10 *Bluetooth* digital music system is covered by a limited warranty. Details of the limited warranty are provided on the product registration card that is included in the carton. Please refer to the card for instructions on how to register. Failure to register will not affect your limited warranty rights.

To obtain Limited Warranty Service, you must return product, with proof of purchase from an authorized Bose dealer, using the following procedures:

1. Contact the Bose organization in your country/region (visit **Global.Bose.com/register** for Bose contact information in your country/region) for specific return and shipping instructions;

2. Label and ship the product, freight prepaid, to the address provided by the Bose organization in your country; and place any necessary return authorization number prominently on the outside of the carton. Cartons not bearing a return authorization number, where required, will be refused.

Technical Information

Input power rating

U.S.A./Canada: 100-120V \sim 50/60Hz, 150W

International: 220-240V \sim 50/60Hz, 150W
100-240V \sim 50/60Hz, 150W

Dimensions

8.7"H x 17.0"W x 9.6"D (22.1 cm x 43.2 cm x 24.4 cm)

Weight

18.5 lb (8.4 kg)



350940-0010



BOSE[®]
Better sound through research[®]

©2012 Bose Corporation, The Mountain,
Framingham, MA 01701-9168 USA
AM350940 Rev.01

Free Manuals Download Website

<http://myh66.com>

<http://usermanuals.us>

<http://www.somanuals.com>

<http://www.4manuals.cc>

<http://www.manual-lib.com>

<http://www.404manual.com>

<http://www.luxmanual.com>

<http://aubethermostatmanual.com>

Golf course search by state

<http://golfingnear.com>

Email search by domain

<http://emailbydomain.com>

Auto manuals search

<http://auto.somanuals.com>

TV manuals search

<http://tv.somanuals.com>