



EHAOS AMPLIFIERS **Service Manual**

MODEL: CH1200M

SPECIFICATIONS

Maximum power output (2 Ohms): 1200W x 1 ch

RMS power Output: 400W x 2ch

Frequency response: 9 - 50KHz

Harmonic distortion: 0.01%

S/N Ratio: 130dB

Power Source Voltage: 14.4V

Ground: Negative

Power consumption: 25A(with 125Wx2 rated output)

External dimensions: 300(W)x65(H)x406(D)mm

To engineers in charge of repair or inspection of our products.

Before repair or inspection, make sure to follow the instructions so that customers and Engineers in charge of repair or inspection can avoid suffering any risk or injury.

1. Use specified parts.

The system uses parts with special safety features against fire and voltage. Use only parts with equivalent characteristics when replacing them. The use of unspecified parts shall be regarded as remodeling for which we shall not be liable. The onus of product liability (PL) shall not be our responsibility in cases where an accident or failure is as a result of unspecified parts being used.

2. Place the parts and wiring back in their original positions after replacement or re-wiring. For proper circuit construction, use of insulation tubes, bonding, gaps to PCB, etc, is involved. The wiring connection and routing to the PWB are specially planned using clamps to keep away from heated and high voltage parts. Ensure that they are placed back in their original positions after repair or inspection. If extended damage is caused due to negligence during repair, the legal responsibility shall be with the repairing company.

3. Check for safety after repair. Check that the screws, parts and wires are put back securely in their original position after repair. Ensure for safety reasons there is no possibility of secondary problems around the repaired spots. If extended damage is caused due to negligence of repair, the legal responsibility shall be with the repairing company.

4. Caution in removal and making wiring connection to the parts for the automobile. Disconnect the battery terminal after turning the ignition key off. If wrong wiring connections are made with the battery connected, a short circuit and/or fire may occur. If extensive damage is caused due to negligence of repair, the legal responsibility shall be with the repairing company.

5. Cautions regarding chips.

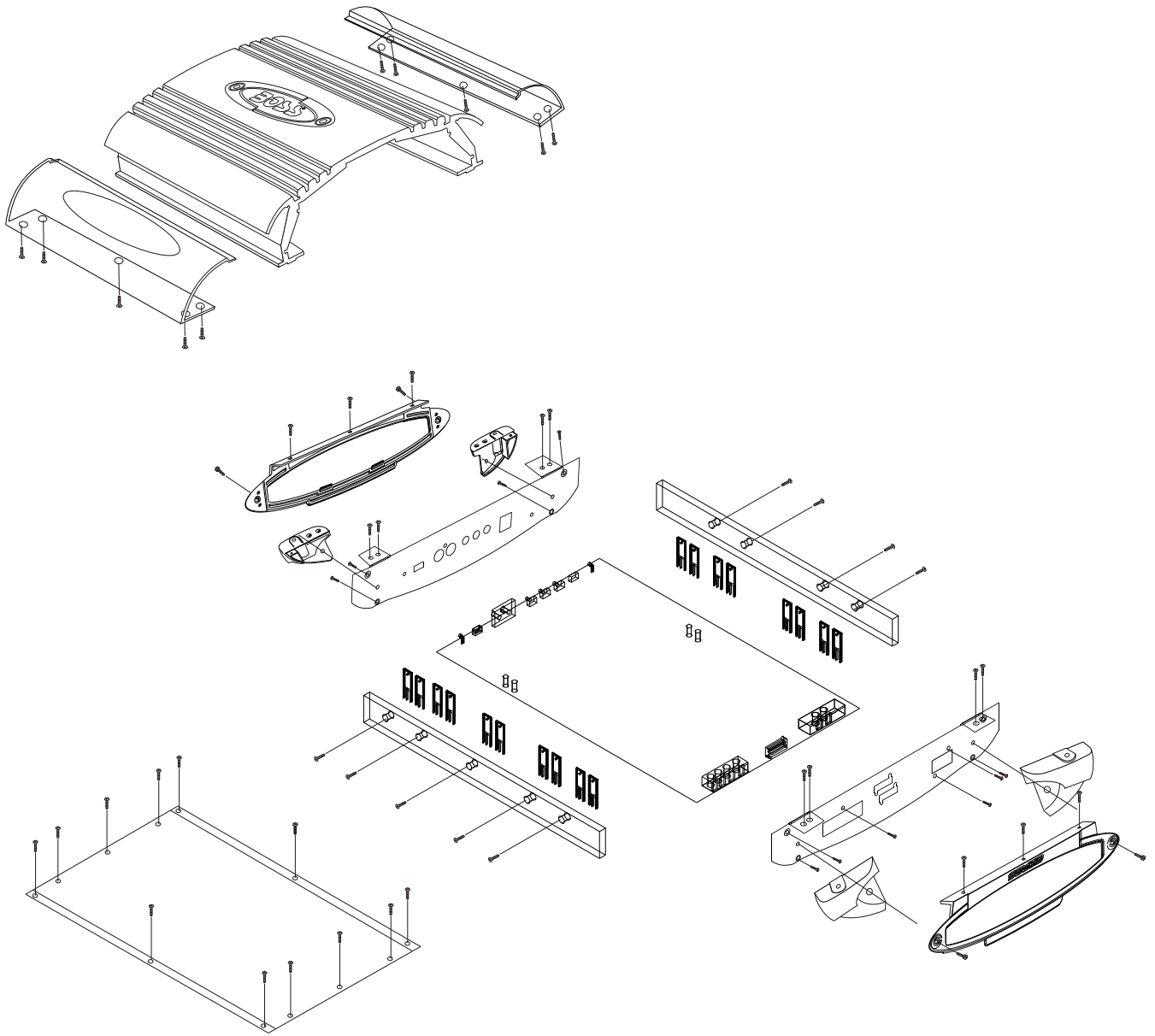
Do not reuse removed chips even when no abnormality is observed in their appearance. Always replace them with new ones. (The chip parts include resistors, capacitors, diodes, transistors, etc). The negative pole of tantalum capacitors is highly susceptible to heat, so use special care when replacing them and check the operation afterwards.

6. Cautions in handling flexible PCB

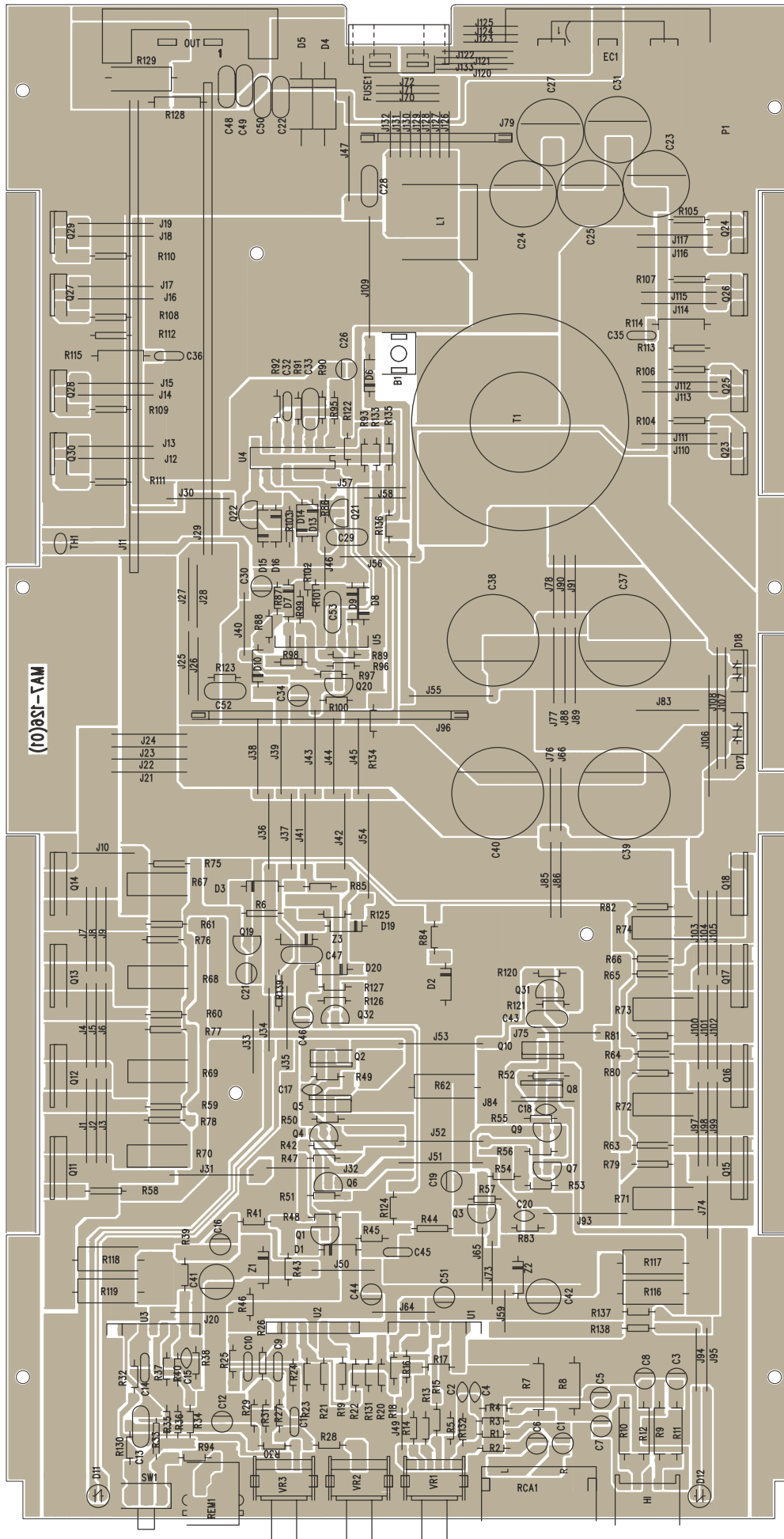
Before working with a soldering iron, make sure that the iron tip temperature is around 270... Take care not to apply the iron tip repeatedly (more than three times) to the same patterns. Also take care not to apply the tip with force.

7. Turn the unit OFF during disassembly and parts replacement. Recheck all work before you apply power to the unit.

EXPLODED VEIW

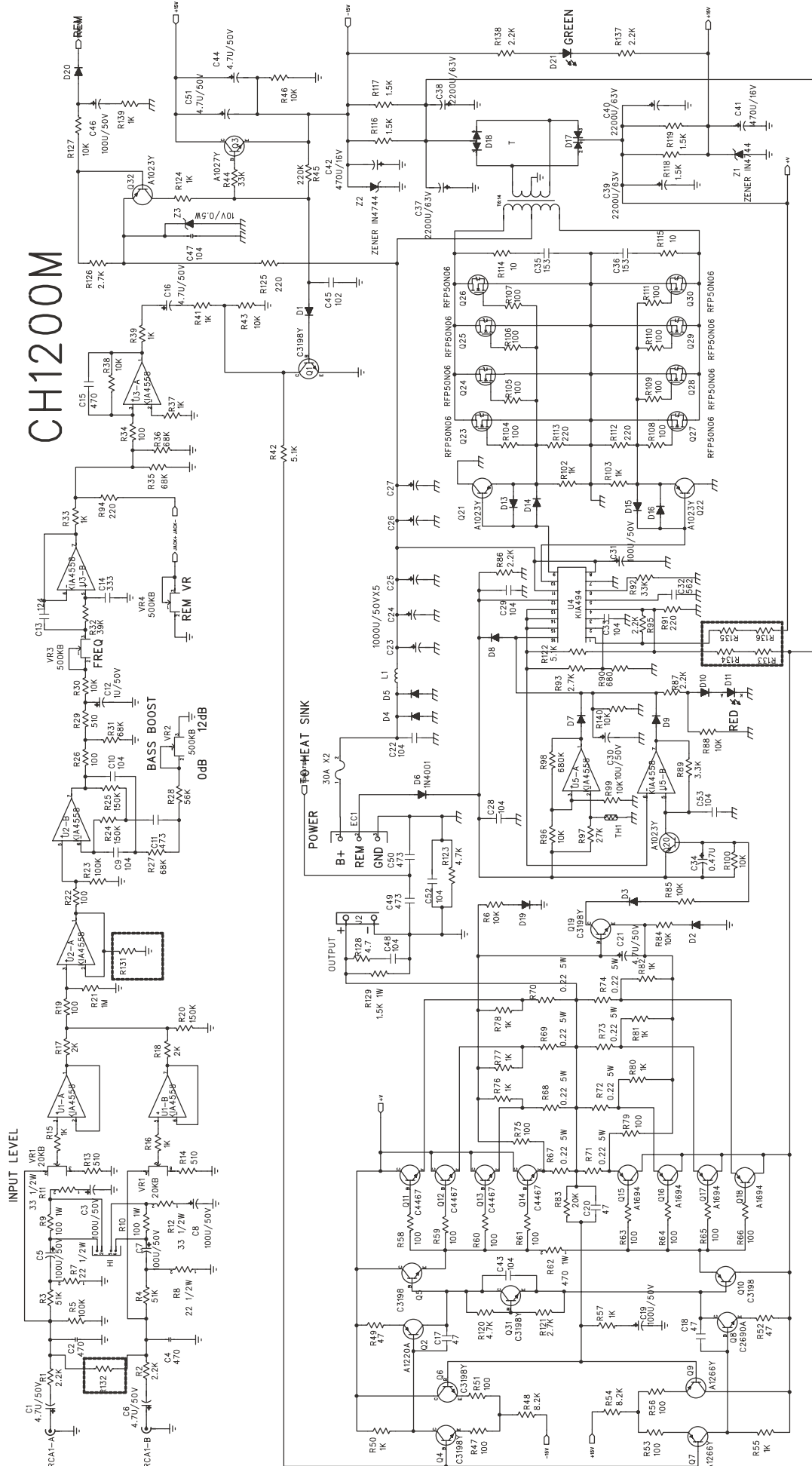


PRINTED CIRCUIT BOARD



CIRCUIT DIAGRAM

CH1200M



PARTS LIST - 1

Part Number	desc	Location	qty
CR-2000-X1-VOS14	RCA Jacks	RCA1	1
CT-SOCKET0-2MA22	Speaker terminel		1
CT-SOCKET1-3MA17	Power terminel		1
CW-50000X0-H0025	High Input socket	HI	1
EC-C4470X0-Z5050	C Cap 47PF(Z)	C17,18,20	3
EC-C4471X0-D5050	C Cap 470PF(D)	C2,4,15	3
EC-E2107X0-M50A1	E Cap 100UF/16	C3,5,7,8,19,26,46	7
EC-E2477X0-MA0A3	E Cap 470UF/16	C41,42	2
EC-E4105X0-M50A1	E Cap 1UF/50V	C12	1
EC-E4106X0-M50A1	E Cap 10UF/50V	C30	1
EC-E4108X0-MA3B5	E Cap 1000/50V	C23,24,25,27,31	5
EC-E4474X0-M50A1	E Cap 0.47/50V	C34	1
EC-E4475X0-M50A1	E Cap 4.7UF/50	C1,6,16,21,44,51	6
EC-E7228X0-MC0C0	E Cap 2200UF/63V	C37~40	4
EC-M5102X0-J5590	E Cap 0.001	C45	1
EC-M5103X0-J5590	E Cap 0.01	C9,10	2
EC-M5104X0-JA0A3	Mylar Cap 0.1	C22,28,29,33,43,47,48,52,53	9
EC-M5153X0-J5785	Mylar Cap 0.015	C35,36	2
EC-M5154X0-JA2A4	Mylar Cap 0.15	C13	1
EC-M5183X0-J60A1	Mylar Cap 0.018	C14	1
EC-M5473X0-J80A1	Mylar Cap 0.047	C11,49,50	3
EC-M5562X0-J50A1	Mylar Cap 0.0056	C32	1
ED-R2502C0-H0000	ESAC25-02C	D18	1
ED-R2502N0-H0000	Mylar CapESAC25-02N	D17	1
ED-R4001X0-H0000	Diode IN-4001	D6	1
ED-R5401X0-H0000	Diode IN-5401	D4,5	2
ED-S4148X0-H0000	Diode IN-4148	D1-3,7-10,13-16,19,20	13
ED-Z10V0X0-H0500	Diode 10V 0.5W	Z3	1
ED-Z15VXX0-H4744	ZENER IN4744	Z1,Z2	2
EE-C23X5X0-10302	LED Red 3MM	D11	1
EE-C53X5X0-10302	LED Green 3MM	D12	1
EO-CMA5480-H0027	Choke coil MA5-48	L1	1
EO-IMA7126-VXXX8	Transformer	T1	1
ER-CS022X0-VE0I0	SLR0.22 5W J	R67-74	8
ER-HG153X0-HXXXX	THERMISTOR 150K	TH1	1
ER-OG022X0-H2526	Resistor 2.2 1/4W	R58-61,63-66	8

PARTS LIST - 2

ER-OG047X0-HA04C	Resistor 4.7 1W	R128	1
ER-OG100X0-HA04C	Resistor 10 1W	R114,115	2
ER-OG101X0-H2526	Resistor 100 1/4W	R19,22,26,34,47,51,53,56,104-111	16
ER-OG101X0-HA04C	Resistor 100 1W	R9,10	2
ER-OG102X0-H2526	Resistor 1K 1/4W	R15,16,37,39,41,50,55,57,102,103,124,33,139, R75~82	21
ER-OG103X0-H2526	Resistor 10K 1/4W	R6,30,38,43,46,84-85,88,96,100,101,127	12
ER-OG104X0-H2526	Resistor 100K 1/4W	R5,R23	2
ER-OG105X0-H2526	Resistor 1M 1/4W	R21	1
ER-OG152X0-HA04C	Resistor 1.5K 1W	R129,116~119	5
ER-OG154X0-H2526	Resistor 150K 1/4W	R20,24,25	3
ER-OG202X0-H2526	Resistor 2K 1/4W	R17,18	2
ER-OG203X0-H2526	Resistor 20K 1/4W	R83	1
ER-OG220X0-HA04C	Resistor 22 1W	R7,8	2
ER-OG221X0-H2526	Resistor 220 1/4W	R91,112,113,125,94	5
ER-OG222X0-H2526	Resistor 2.2K 1/4W	R1,2,86,87,95,137,138	7
ER-OG224X0-H2526	Resistor 220K 1/4W	R45	1
ER-OG272X0-H2526	Resistor 2.7K 1/4W	R93,121,126	3
ER-OG273X0-H2526	Resistor 27K 1/4W	R97	1
ER-OG330X0-HA04C	Resistor 33 1W	R11,12	2
ER-OG332X0-H2526	Resistor 3.3K 1/4W	R89,92	2
ER-OG333X0-H2526	Resistor 33K 1/4W	R44	1
ER-OG470X0-H2526	Resistor 47 1/4W	R49,52	2
ER-OG471X0-HA04C	Resistor 470 1W	R62	1
ER-OG472X0-H2526	Resistor 4.7K 1/4W	R120,123	2
ER-OG473X0-H2526	Resistor 47K 1/4W	R40	1
ER-OG511X0-H2526	Resistor 510 1/4W	R13,14,29	3
ER-OG512X0-H2526	Resistor 5.1K 1/4W	R42,122	2
ER-OG513X0-H2526	Resistor 51K 1/4W	R3,4	2
ER-OG563X0-H2526	Resistor 56K 1/4W	R28	1
ER-OG681X0-H2526	Resistor 680 1/4W	R90	1
ER-OG683X0-H2526	Resistor 68K 1/4W	R27,31,35,36	4
ER-OG684X0-H2526	Resistor 680K 1/4W	R98	1
ER-OG822X0-H2526	Resistor 8.2K 1/4W	R48,54,99	3
ER-OG823X0-H2526	Resistor 82K 1/4W	R32	1
ET-C1023X0-PY000	Transistor KTA1023-Y	Q20-22,32	4
ET-C1027X0-NY000	Transistor KTC1027-Y	Q3	1

PARTS LIST - 3

ET-C1220X0-PY000	Transistor KSA1220A	Q2	1
ET-C1266X0-PY000	Transistor A1266Y	Q7,Q9	2
ET-C1694X0-PY000	Transistor 2SA1694	Q15-18	4
ET-C2690X0-NY000	Transistor KSC2690A	Q8	1
ET-C3198K0-NY000	Transistor KTC3198-Y	Q1,4,6,19,31	5
ET-C4467X0-NY000	Transistor 2SC4467	Q11-14	4
ET-FFZ44X0-X0000	Mosfet IRFZ 44N	Q23-30	8
ET-TI41CX0-NY000	Transistor TIP41C	Q5	1
ET-TI42CX0-P0000	Transistor TIP42C	Q10	1
EW-BG30XX0-01XCU	Copper Jumper plate 30MM	J79	2
EW-BG60XX0-01XCU	Copper Jumper plate 60MM	J96	1
EW-CS04XX0-05AA0	Bare wire 4MM	連接開關	1
EW-CS10XX0-05AA0	Bare wire 10MM	J46,49,58,59	4
EW-CS11XX0-05AA0	Bare wire 11MM	J126~132	7
EW-CS13XX0-05AA0	Bare wire 13MM	J123,124,125	3
EW-CS15XX0-05AA0	Bare wire 15MM	J10,20,25~28,30,32~35,40,50,70~76,78,83~84,90,91,94,95	30
EW-CS17XX0-05AA0	Bare wire 17MM	J120,133,121,122	4
EW-CS18XX0-05AA0	Bare wire 18MM	J12~19,21~24,36~39,41,42,44,45,56,77,85,86,88,89,110~117,57	35
EW-CS20XX0-05AA0	Bare wire 20MM	J1~9,31,43,51~53,55,93,97~105	25
EW-CS25XX0-05AA0	Bare wire 25MM	J47,54	2
EW-CS30XX0-05AA0	Bare wire 30MM	J106~109	4
II-4558LX0-V0008	IC NJM4558L	U1~3,5	4
II-DBL494X-H0016	IC S-494P	U4	1
VR-BN104X0-V0A06	VR 100KBX2 T10	VR3	1
VR-BN203X0-V0A06	VR 20KB T10	VR1	1
VR-BN504X0-V0A06	VR 500KB T10	VR2	1

Free Manuals Download Website

<http://myh66.com>

<http://usermanuals.us>

<http://www.somanuals.com>

<http://www.4manuals.cc>

<http://www.manual-lib.com>

<http://www.404manual.com>

<http://www.luxmanual.com>

<http://aubethermostatmanual.com>

Golf course search by state

<http://golfingnear.com>

Email search by domain

<http://emailbydomain.com>

Auto manuals search

<http://auto.somanuals.com>

TV manuals search

<http://tv.somanuals.com>