

# Boston Horizon Speakers

HS 40

HS 50

HS 60

HS 225

HS 450

HS 460



<b>Specifications</b>	<b>HS 40</b>	<b>HS 50</b>	<b>HS 60</b>
<b>Frequency Range:</b>	86Hz – 25kHz	65Hz – 25kHz	56Hz – 25 kHz
<b>Recommended Amplifier</b>	10 – 100 watts	10 – 125 watts	10 – 150 watts
<b>Sensitivity:</b>	89dB [2.8v at 1m]	89dB [2.8v at 1m]	89dB [2.8v at 1m]
<b>Nominal Impedance:</b>	8 ohms	8 ohms	8 ohms
<b>Crossover Frequency:</b>	2,400Hz	2,400Hz	2,400Hz
<b>Woofers:</b>	4 <sup>1</sup> / <sub>2</sub> " (114mm) copolymer DCD with Phase Plugs and MagnaGuard®	5 <sup>1</sup> / <sub>4</sub> " (133mm) copolymer DCD with Phase Plugs and MagnaGuard	6 <sup>1</sup> / <sub>2</sub> " (165mm) copolymer DCD with Phase Plugs and MagnaGuard
<b>Tweeter:</b>	1" (25mm) Kortec® Soft Dome	1" (25mm) Kortec Soft Dome	1" (25mm) Kortec Soft Dome
<b>Dimensions (H x W x D):</b>	8 <sup>7</sup> / <sub>8</sub> x 6 <sup>1</sup> / <sub>2</sub> x 5 <sup>15</sup> / <sub>16</sub> " (224 x 164 x 151mm)	11 <sup>1</sup> / <sub>16</sub> x 8 <sup>1</sup> / <sub>8</sub> x 7 <sup>3</sup> / <sub>8</sub> " (281 x 205 x 187mm)	13 <sup>11</sup> / <sub>16</sub> x 10 x 9 <sup>1</sup> / <sub>16</sub> " (347 x 254 x 230mm)
<b>Weight:</b>	4 <sup>1</sup> / <sub>2</sub> lbs (2kg)	6 <sup>1</sup> / <sub>2</sub> lbs (2.9kg)	9 <sup>1</sup> / <sub>4</sub> lbs (4.2kg)
	<b>HS 225</b>	<b>HS 450</b>	<b>HS 460</b>
<b>Frequency Range:</b>	80Hz – 25kHz	46Hz – 25kHz	46Hz – 25kHz
<b>Recommended Amplifier:</b>	15 – 175 watts	15 – 200 watts	15 – 250 watts
<b>Sensitivity:</b>	89dB [2.8v at 1m]	89dB [2.8v at 1m]	89dB [2.8v at 1m]
<b>Nominal Impedance:</b>	8 ohms	8 ohms	8 ohms
<b>Crossover Frequency:</b>	2,400Hz	2,600Hz	2,800Hz
<b>Woofers:</b>	Dual 5 <sup>1</sup> / <sub>4</sub> " (133mm) copolymer DCD with Phase Plugs and MagnaGuard	Dual 5 <sup>1</sup> / <sub>4</sub> " (133mm) plus MBOS Rear Port	Dual 6 <sup>1</sup> / <sub>2</sub> " (165mm) plus MBOS Rear Port
<b>Passive Radiators:</b>		Dual 6 <sup>1</sup> / <sub>2</sub> " (165mm) copolymer DCD with Phase Plugs	Dual 7" (178mm) copolymer DCD with Phase Plugs
<b>Tweeters:</b>	1" (25mm) Kortec Soft Dome	1" (25mm) Kortec Soft Dome	1" (25mm) Kortec Soft Dome
<b>Dimensions (H x W x D):</b>	6 <sup>15</sup> / <sub>16</sub> x 19 <sup>1</sup> / <sub>4</sub> x 6 <sup>3</sup> / <sub>4</sub> " (174 x 488 x 170 mm)	39 <sup>3</sup> / <sub>8</sub> x 10 <sup>7</sup> / <sub>8</sub> x 8 <sup>1</sup> / <sub>16</sub> " (999 x 275 x 221 mm)	43 <sup>3</sup> / <sub>16</sub> x 11 <sup>7</sup> / <sub>8</sub> x 9 <sup>9</sup> / <sub>16</sub> " (1096 x 302 x 242 mm)
<b>Weight:</b>	11 lbs (5kg)	19.8 lbs (8.9kg)	24.8 lbs (11.25kg)

# Introduction

## Boston Acoustics Horizon Series Speakers

Thank you for choosing Boston Acoustics. These speakers incorporate high-quality components that produce the famous Boston sound. The speakers are ideally suited for use in a 5.1 channel high-quality home theater or music system.

Boston Horizon Series Speakers are designed to sound as good as they look. With their elegantly slim profiles and the soft smooth radiuses of their back cabinets, Boston Horizon Series speakers complement the décor of any room and offer no-compromise audio excellence.

## Features

### HS 40, HS 50, and HS 60 2-way bookshelf speakers

- 4<sup>1</sup>/<sub>2</sub>, 5<sup>1</sup>/<sub>4</sub>, or 6<sup>1</sup>/<sub>2</sub>" woofer
- 1" soft dome tweeter
- Deep Channel® Design (DCD) woofers for more bass from less amplifier power
- Reduced Baffle Diffraction Design (RBDD) for wider, smoother dispersion
- MagnaGuard® video shielding
- 5-way gold-plated binding posts
- Adjustable feet
- Built-in wall-mounting brackets
- Soft-touch finish with color-coordinated rubber trim

### HS 225 2-way LCR speaker

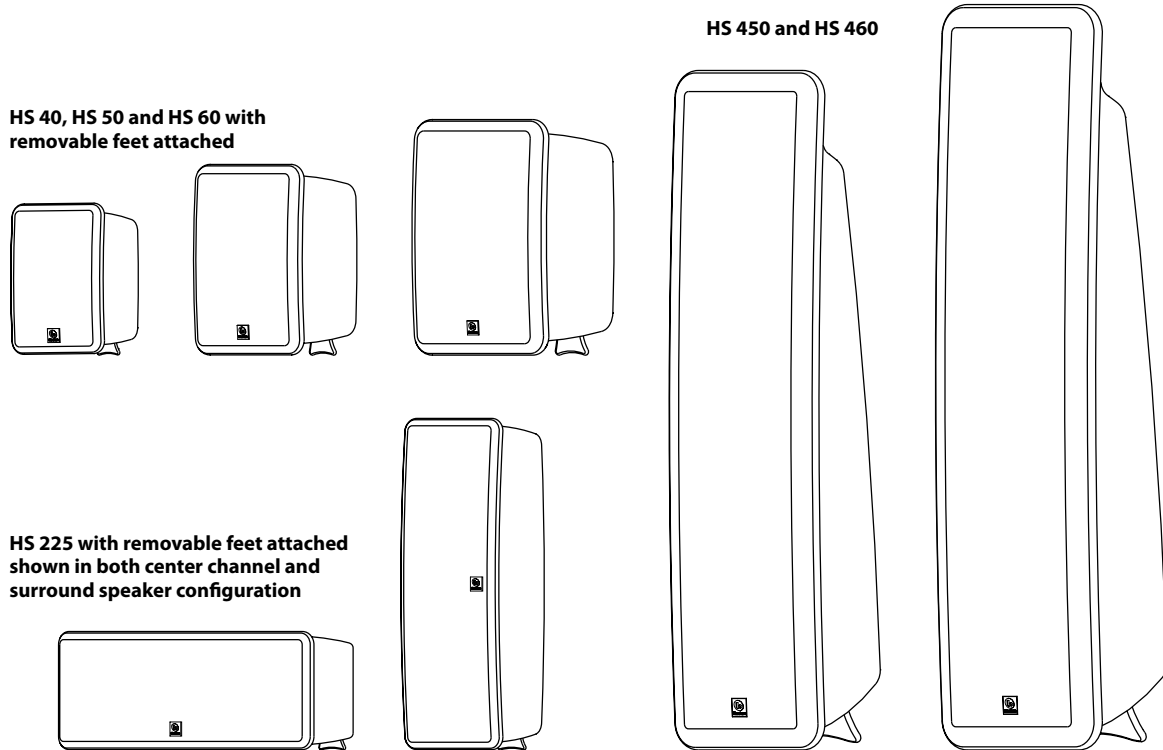
- Dual 5<sup>1</sup>/<sub>4</sub>" woofers
- 1" soft dome tweeter
- Deep Channel Design (DCD) woofers for more bass from less amplifier power
- Reduced Baffle Diffraction Design (RBDD) for wider, smoother dispersion
- MagnaGuard video shielding
- 5-way gold-plated binding posts
- Adjustable feet
- Built-in wall-mounting brackets
- Soft-touch finish with color-coordinated rubber trim

### HS 450 and HS 460 2-way floorstanding speakers

- Dual 5<sup>1</sup>/<sub>4</sub>" or dual 6<sup>1</sup>/<sub>2</sub>" woofers with passive radiators
- 1" soft dome tweeter
- Deep Channel Design (DCD) woofers for more bass from less amplifier power
- Maximized Bass Output System (MBOS) for improved bass acoustics
- Reduced Baffle Diffraction Design (RBDD) for wider, smoother dispersion
- 5-way gold-plated binding posts
- Soft-touch finish with color-coordinated rubber trim

## Unpacking the System

Carefully unpack the speakers. If there is any sign of damage from transit, report it immediately to your dealer and/or delivery service. Keep the shipping carton and packing materials for future use.

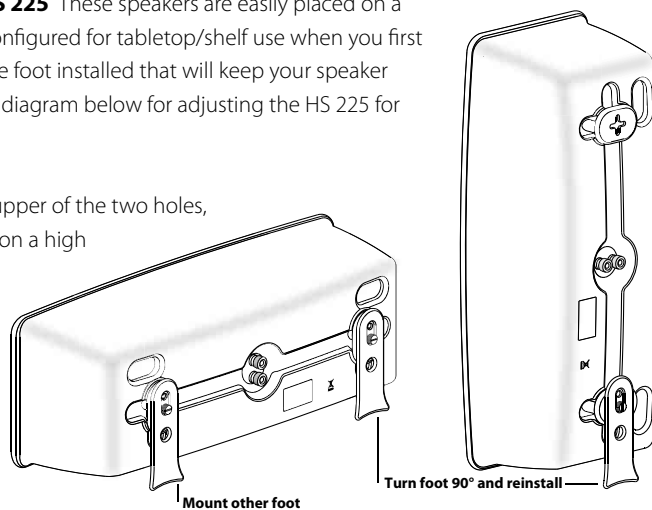


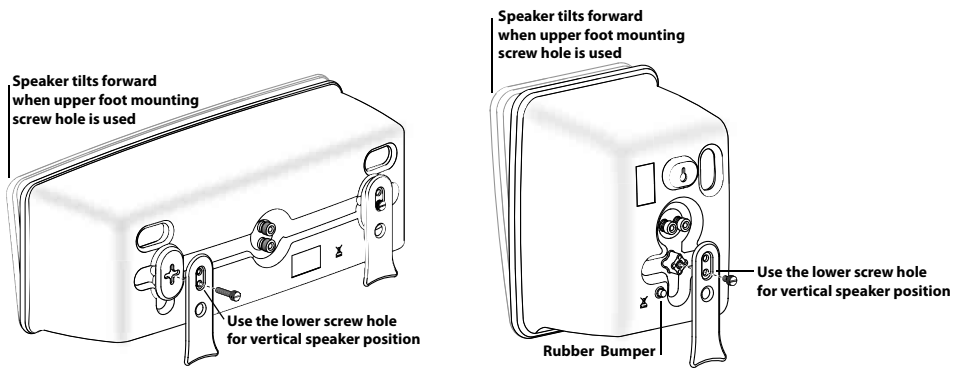
## Placement Options

**HS 450 and HS 460** – These speakers are primarily designed as the left and right speakers in both a stereo and a multi-channel system. Visit [BostonAcoustics.com/placement](http://BostonAcoustics.com/placement) for diagrams explaining the proper placement of loudspeakers.

**Bookshelf Models – HS 40, HS 50, HS 60, and HS 225** These speakers are easily placed on a tabletop, shelf, or wall-mounted. The speakers are configured for tabletop/shelf use when you first unpack the system. The HS 225 speaker will have one foot installed that will keep your speaker level when used in the vertical position. Refer to the diagram below for adjusting the HS 225 for horizontal use as a center channel speaker.

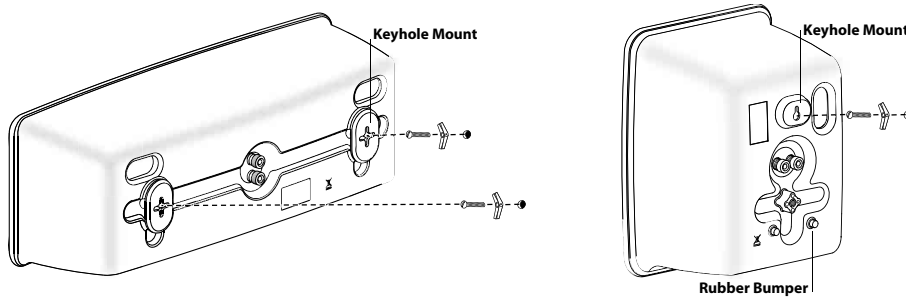
There are 2 sets of holes on each foot; by using the upper of the two holes, the speakers will have a slight forward angle for use on a high shelf. When the feet on the back of your speakers are removed, the speakers are easy to wall-mount.





The Boston Horizon bookshelf models are designed to easily mount on the wall using the keyhole slot(s) on the back of the speaker. When mounting the speakers to the wall, use the supplied rubber bumpers. You must remove the attached foot to wall-mount your speakers. Remove the thumbscrew from the back of the foot. It is slotted for easy removal with a screwdriver or a coin.

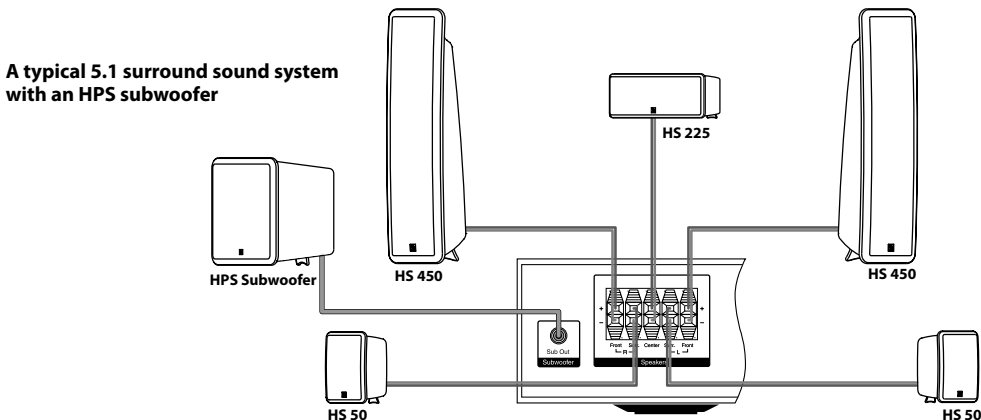
The keyhole mounting option is similar to hanging a picture frame on a wall. Install a screw into the sheetrock, making sure to go into a stud, and hang the speaker onto the screw head. If a stud is not available a sheetrock anchor should be used to support the weight of the speaker.



**NOTE:** You are responsible for the correct selection and use of mounting hardware (available through hardware stores) that will ensure the proper and safe wall-mounting of the speakers.

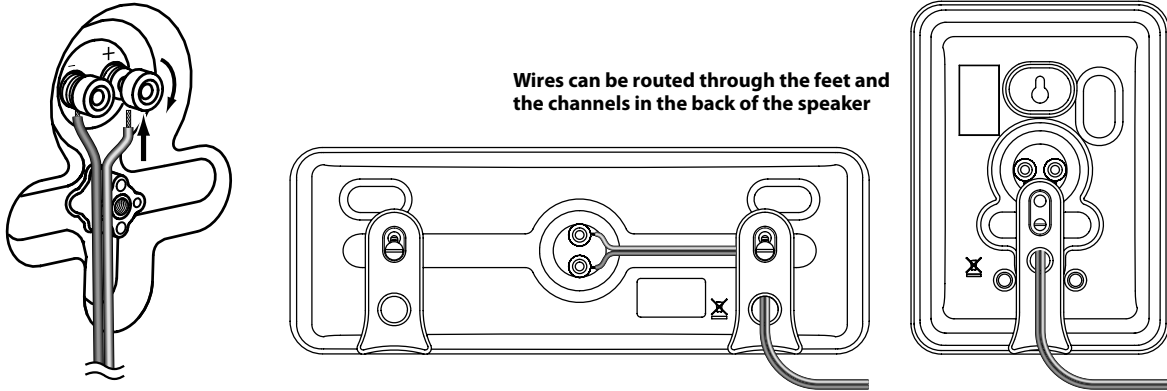
## Speaker Connections

After your speakers are properly placed, you are ready to wire your system. First, turn off all system power. We recommend 18-gauge wire or thicker for runs up to 25 feet (8m), and 16-gauge wire or thicker for longer runs. Separate the first few inches of the wire conductors. Strip off 1/2" (12mm) of insulation from the ends of each speaker wire to expose the two conductors and tightly twist the wire strands. Please see the illustration below for guidance connecting the wires to your speakers. For connection to your receiver, please refer to its owner's manual.



### Important!

To ensure the best performance, observe polarities when making speaker connections, (as shown in the illustration). Connect each + terminal on the back of the amplifier or receiver to the respective + (red) terminal on each speaker. Connect the - (black) terminals in the same way. If the connections are not made correctly it can cause poor bass response and imaging. Also, to avoid short circuits that may damage your equipment be careful not to let any of the bare wires touch each other.



### Operation

When using the Horizon speakers in a Dolby® Digital or DTS™ home theater system, make sure all speakers are set to "Small". When using the system in a Dolby Pro Logic® home theater system, make sure the receiver's center channel mode is set to "Normal."

Some Dolby Digital-equipped receivers/processors offer different setup options for each source or surround mode (e.g., CD-stereo, videotape, Dolby Digital, Pro Logic). In each case, follow your equipment's instructions to ensure that the subwoofer output is turned on and that the speakers are set to "Small" in each mode.

The HS 450 and 460 can be set to "Large" and may produce a more full sound by doing so. Try both settings and use the one that sounds best with the broadest range of source material.

If your receiver has adjustable crossover settings, we recommend the subwoofer crossover be set between 80Hz and 120Hz.

Refer to the owner's manual for your AV receiver for any additional recommendations on system operation.

**NOTE:** A Boston Acoustics powered subwoofer will add impact and realism to both music and film soundtracks. Contact your Boston Acoustics dealer for recommendations on subwoofer models for your application.

## Maintenance And Service

All wiring connections should be inspected and cleaned or remade at least once a year.

If a problem does occur, make sure that all connections are properly made, secure and clean. If a problem occurs in one loudspeaker, rewire that speaker in a different location within the system. Should the problem persist, then the problem is within the speaker. If the speaker sounds fine in the new position it is a strong indication of a more in depth issue with the electronics in the system. In the event that your speakers ever needs service, contact your local Boston Acoustics dealer or visit [www.bostonacoustics.com](http://www.bostonacoustics.com) for a list of dealers in your area.

## Limited Warranty

Boston Acoustics warrants to the original purchaser of our HS Series speakers that they will be free of defects in materials and workmanship for a period of 5 years from the date of purchase.

Your responsibilities are to install and use them according to the instructions supplied, to provide safe and secure transportation to an authorized Boston Acoustics service representative, and to present proof of purchase in the form of your sales slip when requesting service.

Excluded from this warranty is damage that results from abuse, misuse, improper installation, accidents, shipping, or repairs/modifications by anyone other than an authorized Boston Acoustics service representative.

This warranty is limited to the Boston Acoustics product and does not cover damage to any associated equipment. This warranty does not cover the cost of removal or reinstallation. This warranty is void if the serial number has been removed or defaced. This warranty gives you specific legal rights, and you may also have other rights which vary from state to state.

## If Service Seems Necessary

First, contact the dealer from whom you purchased the product. If that is not possible, write to:

Boston Acoustics, Inc.  
300 Jubilee Drive  
Peabody, MA 01960 USA

Or contact us via e-mail at:  
[support@bostona.com](mailto:support@bostona.com)

We will promptly advise you of what action to take. If it is necessary to return an HS Series speaker to the factory, please ship it prepaid. After it has been repaired, we will return it freight prepaid in the United States and Canada.



### For EU Customers Only

This symbol found on the product indicates that the product must not be disposed of with household waste. Instead, it may be placed in a separate collection facility for electronic waste or returned to a retailer when purchasing similar product. The producer paid to recycle this product. Doing this contributes to reuse and recycling, minimizes adverse effects on the environment and human health and avoids any fines for incorrect disposal.

Boston Acoustics continually strives to update and improve its products. The specifications and construction details are subject to change without notice.



300 Jubilee Drive, Peabody, MA 01960 USA  
[www.bostonacoustics.com](http://www.bostonacoustics.com)

© 2007 Boston Acoustics, Inc. Boston, Boston Acoustics, BassTrac, Kortec, MagnaGuard, and Deep Channel are registered trademarks and the B/A ellipse symbol is a trademark of Boston Acoustics, Inc. Dolby Digital, and Dolby Pro Logic are registered trademarks of Dolby Laboratories. DTS is a registered trademarks of DTS, Inc. 142-003029-0



## Free Manuals Download Website

<http://myh66.com>

<http://usermanuals.us>

<http://www.somanuals.com>

<http://www.4manuals.cc>

<http://www.manual-lib.com>

<http://www.404manual.com>

<http://www.luxmanual.com>

<http://aubethermostatmanual.com>

Golf course search by state

<http://golfingnear.com>

Email search by domain

<http://emailbydomain.com>

Auto manuals search

<http://auto.somanuals.com>

TV manuals search

<http://tv.somanuals.com>