

HSi Series

Speakers designed to match small lighting fixtures

in-ceiling

play invisible. play smart.

The HSi 430, HSi 435, and HSi S6W2 models are sized to match and resemble small lighting can fixtures. In addition to their small size, the speakers also feature a dramatically reduced visible bezel and magnetic grilles. These new in-ceiling models combine superior design innovation with true audio realism and wide dispersion, allowing you to enjoy rich sound without compromising your décor.

product features

The Boston Acoustics HSi 430 features a round bezel and the HSi 435 a square bezel. Both models are 2-way configurations, with 3½" woofers and ¾" tweeters. Each model features a metal back enclosure with front-firing ports for extended bass response, offering uncompromised sonic performance.

Featuring dual high-performance 6" woofers, the HSi S6W2 in-ceiling subwoofer is the ideal solution for consumers with who desire a virtually hidden and high-quality in-ceiling audio installation. The subwoofer's built-in crossover allows for the same stereo amplification as the main speakers, and integrated output terminals allow for wiring of either one or two pairs of full-range in-ceiling speakers. A bandpass enclosure delivers the high output bass necessary for optimum room-filling sound.

performance features

For flexibility in crafting rich, room-filling soundscapes, the HSi 430 and HSi 435 speakers feature an innovative switchable highpass filter, which removes bass frequencies below 180Hz. When using the speakers without the HSi S6W2 subwoofer, the highpass filter may be switched off for optimum performance. However, if the speakers are being used full-range in high sound level applications, the highpass filter helps protect the speaker. For use with the HSi S6W2 subwoofer, the highpass filter may be switched on for optimum performance. Constant voltage (CV) versions of the HSi 430 and HSi 435 are also available.



HSi 430



HSi 435



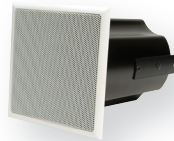
5½"

*HSi S6W2
subwoofer*





Hsi 430



Hsi 435

Specifications

Frequency Response (±3dB)	100Hz-20kHz with highpass filter switched off. 180Hz-20kHz with highpass filter switched on.	
Recommended Amplifier	10-100 watts	10-100 watts
Nominal Impedance	8 ohms	8 ohms
Sensitivity 1 watt (2.83V) at 1m	86dB	86dB
Tweeter	¾" (20mm) Dome	¾" (20mm)) Dome
Woofer	3½" (89mm)	3½" (89mm)
Crossover Frequency	180Hz (subwoofer); 3,500Hz (woofer-tweeter)	
Grille Frame Size	5½" (138mm) diameter	5½" (138mm) square
Mounting Hole Cutout	4⅞" (124mm) diameter	4⅞" (124mm) diameter
Mounting Depth (from surface)	7½" (190mm)	7½" (190mm)
Optional New Construction Bracket	NCBR3	NCBR3



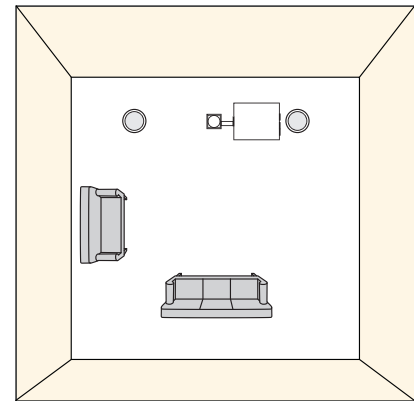
Hsi S6W2

Specifications

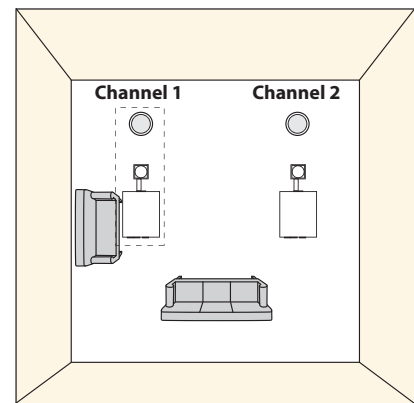
Frequency Response (±3dB)	50Hz-180kHz
Recommended Amplifier	10-100 watts
Nominal Impedance (each channel)	8 ohms
Sensitivity 1 Watt (2.83V) at 1m (each channel)	86dB
Woofer	Dual 6" Copolymer (152mm)
Crossover Frequency	180Hz
External Dimensions	8⅞ x 14 x 26¼" (213x354x664mm)
Grille Frame Size	5½" (138mm) diameter
Mounting Hole Cutout	4⅞" (124mm) diameter
Mounting Depth (from surface)	8¼" (209mm)
Optional New Construction Bracket	NCBR3

installation flexibility

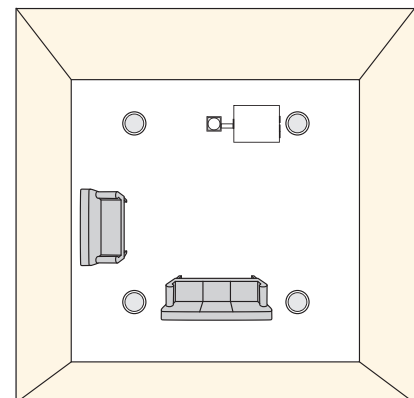
For installation flexibility, the new HSi 430 and HSi 435 loudspeakers are designed for use either in simple pairs for stereo use or in multiples for larger areas. Their "metal can" backs make them ideal for ceiling installations, with a variety of easy install features for existing ceilings. Additionally, for new construction installations, the HSi speakers offer an optional new construction bracket, the NCBR3, that acts as a perfect guide when cutting the ceiling/wallboard.



Normal Wiring: Stereo, 1 subwoofer, and 1 pair main speakers.



Multiple Speakers: Stereo, 1 subwoofer, 1 main speaker per channel



Multiple Speakers: 1 subwoofer, 2 pairs main speakers (for higher output).

What it means to be from Boston

First and foremost, Boston is an engineering company, and every Boston system is optimized to meet the highest performance standards (our own). Of course, performance is only one measure of value. So we're careful to build all our products with strict attention to everything from the choice of materials to the details of fit and finish. It's how we've been exceeding the expectations of serious listeners for more than thirty years.



300 Jubilee Drive, Peabody, MA 01960 bostonacoustics.com

All rights reserved. Boston, Boston Acoustics, and the B/A ellipse symbol are registered trademarks, and Play Smart is a trademark of Boston Acoustics, Inc.

Free Manuals Download Website

<http://myh66.com>

<http://usermanuals.us>

<http://www.somanuals.com>

<http://www.4manuals.cc>

<http://www.manual-lib.com>

<http://www.404manual.com>

<http://www.luxmanual.com>

<http://aubethermostatmanual.com>

Golf course search by state

<http://golfingnear.com>

Email search by domain

<http://emailbydomain.com>

Auto manuals search

<http://auto.somanuals.com>

TV manuals search

<http://tv.somanuals.com>