

SMOKE & CO COMBO ALARM

CAT. **SC02B / SC02LB**



SEPARATE SMOKE & CO

Combination alarm detects both dangers and eliminates the need for two separate alarms.

ELECTROCHEMICAL CO SENSOR

Most accurate technology available for detecting carbon monoxide as compared to other sensing technologies.

LATCHING ALARM INDICATOR

Remembers which unit initiated an alarm.

END OF LIFE SIGNAL

Provides audible notice when alarm needs to be replaced.

TWO LOCKING FEATURES

Pins lock battery drawer and/or alarm to base. Perfect for apartment, dormitory or hotel applications.

Available in the following versions:

SC02B Alkaline Battery
SC02LB Long Life Lithium Battery



Download from www.Somanuals.com. All Manuals Search And Download.

BRK®

THE PROFESSIONAL STANDARD

9V Battery Powered

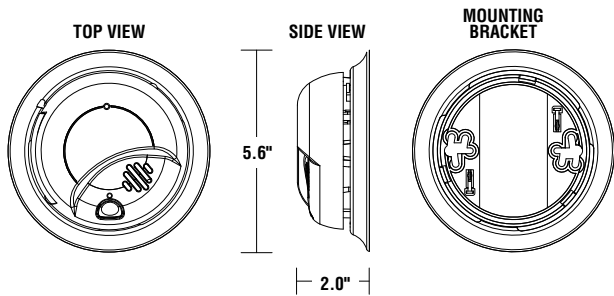
Description:

The BRK Brands, Inc. model No SC02 is a battery powered single station combination smoke and carbon monoxide alarm specifically designed for residential and institutional applications including sleeping rooms of hospitals, hotels, motels, dormitories and other multi-family dwellings as defined in standard NFPA 101 Model SC02B complies with UL217, UL2034, CSFM, NFPA 72, NFPA 720, HUD, FHA and other agencies that model their codes after the above agencies. They meet building codes where battery powered smoke and carbon monoxide alarms are required either separately or in combination.

The BRK SC02B features a dual ionization smoke sensing chamber and an electrochemical carbon monoxide sensor, 9V battery powered, an 85dB horn, an End of Life and a silence feature. The SC02B features a 9V alkaline battery and the SC02LB a 9V long life lithium battery. "Intelligent Sensing Technology" is designed to reduce nuisance alarms. "Latching Alarm Indicator" remembers which unit initiated an alarm. The unit that triggered the alarm will store in memory or "latch" the information and begin to flash the LED indicator 2 seconds on, 2 seconds off. The "Perfect Mount" system features a gasketless base and a mounting bracket that keeps the alarm secure over a wide rotation range to allow for true alignment. A single button test/silence button eliminates confusion. Battery installation and removal can occur while the unit is mounted to the ceiling or wall via the side load battery compartment. Other Contractor Preferred features include a dust cover to keep alarm clean during construction. Two locking features are provided to prevent battery theft and/or theft of the unit. Designed for wall or ceiling mounting. Includes mounting anchors and screws.



CAT. SCO2B/SCO2LB



TECHNICAL SPECS

| | |
|--------------------------|--|
| Alarm Dimensions: | 5.6" dia x 2.0"H |
| Weight: | 7.6 oz |
| Operating Voltage: | 9V battery powered |
| Temperature Range: | 40°F (4°C) to 100°F (38°C) |
| Humidity Range: | 10% to 95% relative humidity (RH) |
| Audio Alarm: | 85dB at 10 feet |
| Test/Silence: | Electronically simulates smoke condition or carbon monoxide condition, causing the unit to alarm Press and hold test/silence button |
| Alarm Reset: | Automatic when smoke and/or CO clears |
| Smoke Sensor: | Dual chamber ionization |
| CO Sensor: | Electrochemical |
| Indicator Lights/Sounds: | |
| DC Power: | Intermittent Green LED |
| Local Alarm: | Red LED flashes rapidly |
| Alarm Latch: | Red LED flashes 2 sec on/2 sec off after local alarm stops |
| Low Battery Latch: | Green LED flashes on for 2 seconds, off for 2 seconds. Note: Latching features are active for 15 minutes only. |
| Listing: | Listed to UL217 and UL2034 Standards |

ARCHITECTURAL AND ENGINEERING SPEC

The combination smoke and carbon monoxide alarm shall be a BRK Model SCO2B and shall provide at a minimum the following features and functions:

1. An ionization smoke sensing chamber and an electrochemical CO sensor.
2. Powered by a supervised 9V alkaline battery and features a solid state piezo horn rated at 85dB at 10 ft. and the unit shall be capable of self restoring.
3. The unit shall perform self diagnostic tests and issue a malfunction warning (three chirps) if the unit malfunctions.
4. The unit shall have an "End of Life" signal. This signal should be capable of temporarily being silenced for up to 2 days. After about 2 days, the signal will resume. After about 2-3 weeks the signal cannot be silenced.
5. A visual power-on indicator to confirm unit is receiving power. Separate LED 's to indicate a smoke or CO alarm.
6. The CO sensor is adjusted not to detect CO levels below 30 PPM and will not alarm when exposed to constant levels of 30 PPM for 30 days. It will alarm at the following levels: 400 PPM CO between 4 and 15 minutes, 150 PPM CO between 10 and 50 minutes and 70 PPM CO between 60 and 240 minutes.
7. Two Latching features: Alarm Latch to easily identify initiating alarm after alarm condition has subsided. Low battery latch: to visually identify which unit is in low battery condition. Two Silence Features: Alarm Silence to temporarily silence nuisance alarms. Low Battery Silence to silence low battery chirp for up to 8 hours.
8. Two Locking features - tamper resistant locking pins that lock battery drawer and/or alarm to mounting bracket.
9. The unit shall be capable of operating between 40°F (4°C) and 100°F (38°C) and relative humidity between 10% and 95%.
10. The unit shall contain mounting hardware and shall be listed for wall or ceiling mounting.
11. The unit shall at a minimum meet the requirements of UL217 and UL2034, CSFM, NFPA 72 and 720 and the ICC.

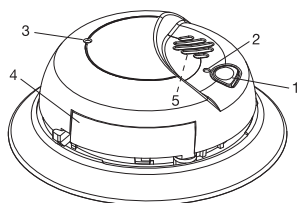
SHIPPING SPECS:

| | |
|------------------------------|---|
| Individual Carton Dimensions | 5.69"L x 2.25"W x 5.59"H |
| Weight | 0.59 lbs. |
| Cube | 0.041 ft3 |
| UPC | 0 29054 00089 7: SCO2B 0 29054 00736 0: SCO2LB |
| Master Carton Dimensions | 14.43"L x 6.19"W x 12.63"H |
| Master Pack | 12 |
| Weight | 7.6 lbs. |
| Cube: | 0.65 ft3 |
| I2of5: | 200 29054 00089 1: SCO2B 800 29054 00736 6: SCO2LB |
| Pallet Information | |
| Cases per Layer | 19 |
| Number of Layers: | 3 |
| Cases per Pallet: | 57 |
| Units per pallet: | 684 |
| Cube: | 42.2 ft3 |
| Weight: | 498 lbs. |

INSTALLATION OF ALARM

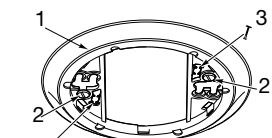
Installation of this smoke alarm must conform to NFPA 72. Always check your local building codes. Follow all instructions for placement as outlined in the user's manual.

THE PARTS OF THIS SMOKE ALARM



TOP OF ALARM

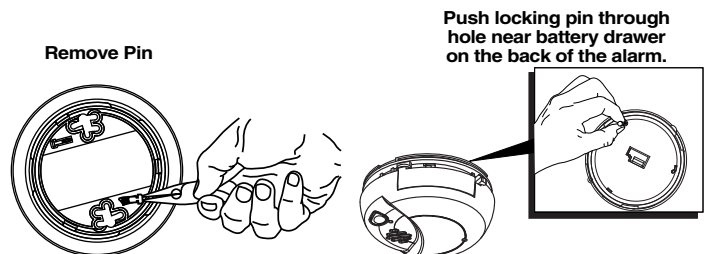
1. Test/Silence Button
2. Power Light (Green)/
Smoke Alarm light (Red)
3. CO Alarm Light (Red)
4. Battery Drawer
5. Behind Cover: Alarm 85 dB horn



BOTTOM OF ALARM

1. Mounting bracket
2. Mounting slots (1 of 2)
3. Locking Pins
4. Battery Drawer Latch
5. Battery Drawer - Install 9V battery here

BATTERY DRAWER LOCK



©2010 BRK Brands, Inc. a Jarden Corporation
Company (NYSE: JAH)
3901 Liberty Street Road
Aurora, IL 60504-8122
All rights reserved

First Alert is a registered trademark of the First Alert Trust
BRK is a registered trademark of BRK Brands, Inc.
CM3080

Free Manuals Download Website

<http://myh66.com>

<http://usermanuals.us>

<http://www.somanuals.com>

<http://www.4manuals.cc>

<http://www.manual-lib.com>

<http://www.404manual.com>

<http://www.luxmanual.com>

<http://aubethermostatmanual.com>

Golf course search by state

<http://golfingnear.com>

Email search by domain

<http://emailbydomain.com>

Auto manuals search

<http://auto.somanuals.com>

TV manuals search

<http://tv.somanuals.com>