

Outperforming Expectations:
Brady Thermal Transfer Printers



Brady BBP81 Printer
Depend on It



10/100 Print Server
Manual
Edition 06/08
Y885775

Copyright This manual is copyrighted with all rights reserved. No portion of this manual may be copied or reproduced by any means without the prior consent of Brady Worldwide, Inc.

While every precaution has been taken in preparation of this document, Brady assumes no liability to any party for any loss or damage caused by errors or omissions or by statements resulting from negligence, accident, or any other cause. Brady further assumes no liability arising out of the application or use of any product or system described, herein; nor any liability for incidental or consequential damages arising from the use of this document. Brady disclaims all warranties of merchantability or fitness for a particular purpose.

Brady reserves the right to make changes without further notice to any product or system herein to improve reliability, function, or design.

Reproduction of this material, in part or whole, is strictly prohibited without the written permission of Brady Worldwide, Inc. For more information, contact: Brady Worldwide, Inc. 6555 W. Good Hope Road, Milwaukee, WI 53223.

Disclaimer Every effort has been made to make this guide as accurate and complete as possible. Brady Worldwide, Inc. is not responsible for labeling inaccuracies and omissions occurring during the use of this guide.

This manual is proprietary to Brady Worldwide, Inc. and may be revised from time to time without notice. Brady Worldwide, Inc. disclaims any understanding to provide you with revisions, if any.

Trademarks Windows CE is a trademark of the Microsoft Corporation.

Adobe Illustrator is a trademark of the Adobe Corporation.

All brand or product names referenced in this manual are trademarks (™) or registered trademarks (®) of their respective companies or organizations.



Contents

About This Document	7
Who Should Use This Document	8
How This Document Is Organized	8
Contacts	9
Corporate Headquarters	9
Technical Service	9
Other Websites	9
Document Conventions	10
Related Documents	12
1 • Introduction	13
Overview	14
Components	14
Requirements	15
Firmware	15
Browser Support	15
Protocols	15
Hardware	15
Compatibility	16
Technical Specifications for the 10/100 Internal PS	17
2 • 10/100 Internal Print Server	19
10/100 Internal PS Features	20
Status and Configuration	20
Print Server Status	28
Reset	30
Restore	31

3 • Getting Started	33
Before You Begin	34
Using the Control Panel to View and Modify Print Server Parameters	37
Defaulting the 10/100 Internal PS	38
Defaulting the 10/100 PS on the BBP81 (4") and BBP81 (6") Printers	38
WebView	39
Assigning an IP Address	40
With Dynamic Host Configuration Protocol (DHCP)	40
Without DHCP	40
In a Non-Windows Environment.	41
A • BradyConnect WebView	45
WebView	46
Home Page	46
View Printer Configuration	47
Print Server Settings	50
View and Modify Printer Settings	51
Setting the Primary Network Print Server	57
TCP/IP Settings	59
Printer Controls	63
Directory Listing	64
Alert Setup	65
Setting Alerts	66
Establishing Email Alert Messaging	69
Checking 10/100 Internal PS Configuration Settings	72
Browser	72
Configuring the Print Server.	75
Sending Email to Your Brady Printer	76
B • Hardware Troubleshooting	81
Troubleshooting the 10/100 PS	82
Defaulting the 10/100 PS on the BBP81 (4") and BBP81 (6") Printers	82
10/100 Internal PS Network Status/Activity Indicator	83
Unable to Print	84
C • Print Protocols	87
FTP	88
D • Print Queues	89
Berkeley Software Distribution (BSD)-Style Print Queue	90
Configuring the Print Queue.	90

- System V Queue Installation91
 - Configuring Operating System V Queue for BradyConnect Printing91
 - Prerequisites91
 - Spool Print Job Configuration.91
- E • Frequently Asked Questions 93**
- Glossary 97**
- Index 101**

This page intentionally left blank.



About This Document

This section provides you with contact information, document structure and organization, and additional reference documents.

Contents

Who Should Use This Document	8
How This Document Is Organized	8
Contacts	9
Corporate Headquarters	9
Technical Service	9
Other Websites	9
Document Conventions	10
Related Documents	12

Who Should Use This Document

This user guide is intended to be used by any person who will install and work with the 10/100 Internal PS for the BBP81 printer.

How This Document Is Organized

This user guide is set up as follows:

Section	Description
Introduction on page 13	This chapter provides a high-level overview of the 10/100 Internal PS device, installation types, standard network configurations, and how to work with 10/100 Internal PS.
10/100 Internal Print Server on page 19	This chapter provides you with details on the 10/100 Internal PS features.
Getting Started on page 33	This chapter provides you with information and procedures for working with the most frequently used 10/100 Internal PS features.
WebView on page 46	The appendix provides you with detailed information that allows you to use the enhanced functionality of your BradyConnect-enabled printer with the 10/100 Internal PS.
Troubleshooting the 10/100 PS on page 82	This appendix provides you with solutions to known issues.
Print Protocols on page 87	In this appendix, an exercise is provided to experiment with File Transfer Protocol (FTP) support.
Print Queues on page 89	This appendix provides information and instructions on configuring your print queue.
Frequently Asked Questions on page 93	This appendix provides a group of frequently asked questions (FAQs) about 10/100 Internal PS.
Glossary on page 97	This appendix is a list of terms and associated definitions.

Contacts

You can contact Brady Worldwide Inc. at the following:

Corporate Headquarters

Brady Worldwide, Inc.
6555 West Good Hope Road
Milwaukee, WI 53223 U.S.A.
T: 414-358-6600 USA Domestic
F: 414-438-6958

Technical Service

Brady Technical Service and the Brady Knowledge Center may be contacted at www.bradyid.com.

Other Websites

USA	www.bradyid.com
Canada	www.bradycanada.com
Mexico	www.bradylatinamerica.com
Asia	www.bradycorp.com
Europe	www.bradyeurope.com

Document Conventions

The following conventions are used throughout this document to convey certain information:

Alternate Color (online only) Cross-references contain links to other sections in this guide. If you are viewing this guide online, click the [blue text](#) to jump to its location.

Command Line Examples All command line examples appear in Courier New font. For example, type the following to get to the Post-Install scripts in the bin directory:

```
Ztools
```

Files and Directories All file names and directories appear in Courier New font. For example, the Brady<version number>.tar file and the /root directory.

Cautions, Important, Note, and Example



Caution • Warns you of the potential for electrostatic discharge.



Caution • Warns you of a potential electric shock situation.



Caution • Warns you of a situation where excessive heat could cause a burn.



Caution • Advises you that failure to take or avoid a specific action could result in physical harm to you.

Caution • Advises you that failure to take or avoid a specific action could result in physical harm to the hardware.



Caution • Advises you need to wear protective eye wear.



Important • Advises you of information that is essential to complete a task.



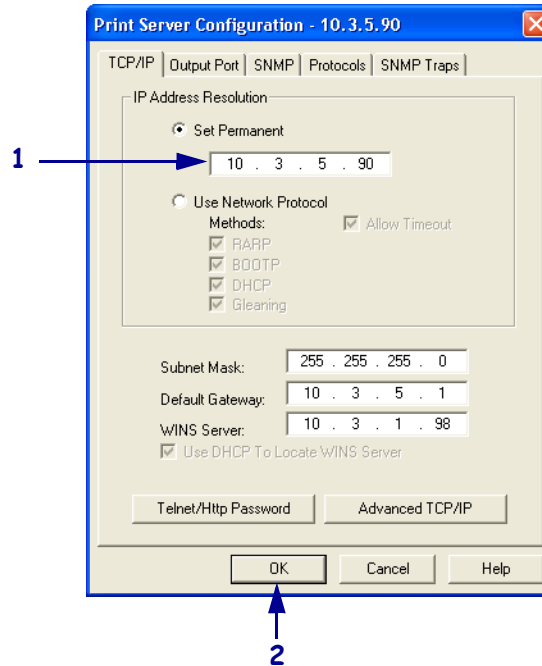
Note • Indicates neutral or positive information that emphasizes or supplements important points of the main text.



Example • Provides an example, often a scenario, to better clarify a section of text.

Illustration Instructions Used when an illustration contains either information about a dialog box or step(s) to accomplish in a dialog box.

One illustration instruction identifies a section of the dialog box and the other shows steps to follow.



1	Set Permanent text-box.
2	<ol style="list-style-type: none"> a. In the Set Permanent text-box, type in the print server's IP address. b. When you are finished, click OK.

Related Documents

The following documents might be helpful references:

- *ZPL II[®] Programming Guide For x.10 through x.13 Firmware*
- *ZPL II[®] Programming Guide For x.14 Firmware and Later*
- *EPL[™] Programming Guide*



Introduction

This chapter provides a high-level overview of the 10/100 Internal PS device, installation types, standard network configurations, and how to work with 10/100 Internal PS.

Contents

Overview	14
Components	14
Requirements	15
Firmware	15
Browser Support	15
Protocols	15
Hardware	15
Compatibility	16
Technical Specifications for the 10/100 Internal PS	17

Overview

The 10/100 Internal Print Server (PS) is an optional factory- or field-installed device that connects the network and your BradyConnect-enabled printer. 10/100 Internal PS provides you with a browser interface for printer and print server settings.

Components

Figure 1 shows the components of a printer equipped with a 10/100 Internal PS. Table 1 identifies the various components and the functions each performs.

Figure 1 • Components

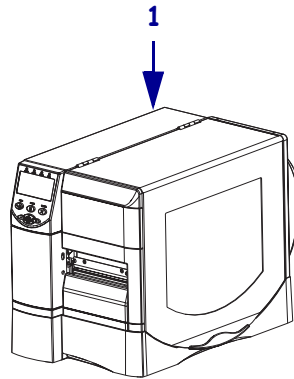


Table 1 • Components and Functions

1	<p>Printer with 10/100 Internal PS—10/100 Internal PS gives your printer these features:</p> <ul style="list-style-type: none">• Print server and printer setup using a browser• Remote monitoring and configuration capability of the 10/100 Internal PS using a browser• Alerts• The ability for you to send unsolicited printer status messages via email-enabled devices
---	--

Requirements

This section lists the minimum requirements for 10/100 Internal PS, which include firmware, software, browser support, protocols, and hardware.

Firmware

Table 2 shows the appropriate firmware version for each printer.

Table 2 • Firmware Version by Printer

Printer	Firmware Version
BBP81 (4")	ZZSP1148A or later
BBP81 (6")	ZZSP1148A or later



Important • You can upgrade your firmware by visiting our website: www.bradyid.com

Browser Support

- HTML v3.2 or higher
- Internet Explorer or Netscape Navigator

Protocols

- TCP/IP: ARP, RARP
- TCP/IP & UDP: DHCP, BOOTP, SNMP v1.0
- HTTP v1.0

Hardware

The following are the 10/100 Internal Print Server options available for different printer models:

Table 3 • Server Options for Printer Models

Printers	External	Internal Factory
BBP81 (4")	•	•
BBP81 (6")		

Compatibility

This section identifies the various components that are compatible with 10/100 Internal PS.

Software IBM®: Tivoli® v7.1.3, HP®: Web JetAdmin™ v7.0, OpenView™ V6.4, and any SNMP management application all work with 10/100 Internal PS.

Technical Specifications for the 10/100 Internal PS

General Specifications			
Network Connection		Ethernet 10BaseT and 100BaseT UTP RJ-45 connection Half and Full Duplex Communications	
User Interface		A single (two element) LED activity indicator: <ul style="list-style-type: none"> • bi-color display of operational status (solid green or solid amber) • bi-color display of speed and network activity (flashing green or flashing amber) 	
Height (external dimensions)		0.5 in.	13.4 mm
Width (external dimensions)		2.2 in.	55.9 mm
Length (external dimensions)		3.7 in.	92.9 mm
Weight		0.9 oz	26 g
Temperature	Operating	32° to 140°F	0° to 60°C
	Storage	−40° to 140°F	−40° to 60°C
Relative Humidity	Operating	20% to 80%, non-condensing	
	Storage	5% to 85%, non-condensing	
Warranty		One year	



Notes • _____



10/100 Internal Print Server

This chapter provides you with details on the 10/100 Internal PS features.

Contents

10/100 Internal PS Features	20
Status and Configuration	20
Print Server Status	28
Reset	30
Restore	31

10/100 Internal PS Features

This section covers features available for the 10/100 Internal PS *only*, not the printer's features. Some of the features you access in this section prompt you to enter the default user ID and password, as follows:

- **User ID:** admin
- **Password:** 1234

Status and Configuration

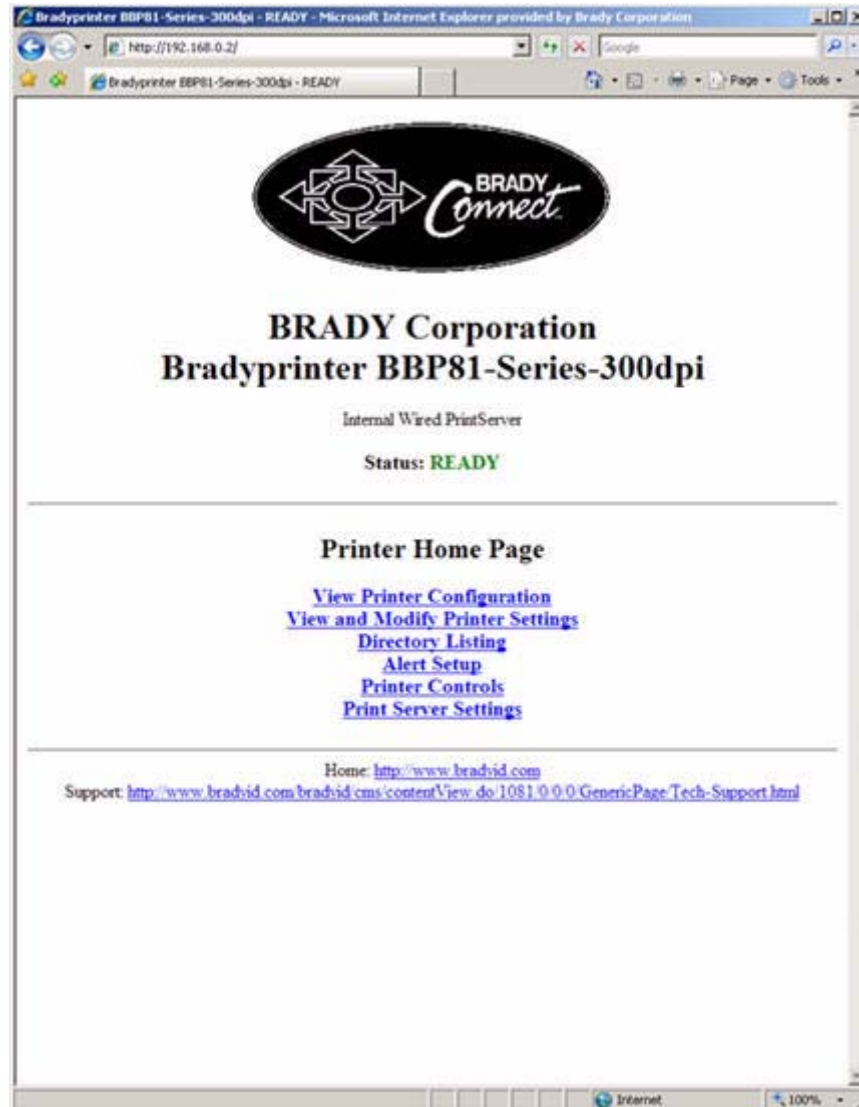
The steps that follow are based on the navigation of a BBP81 printer.



Important • You can upgrade your firmware by visiting our web site: www.bradyid.com

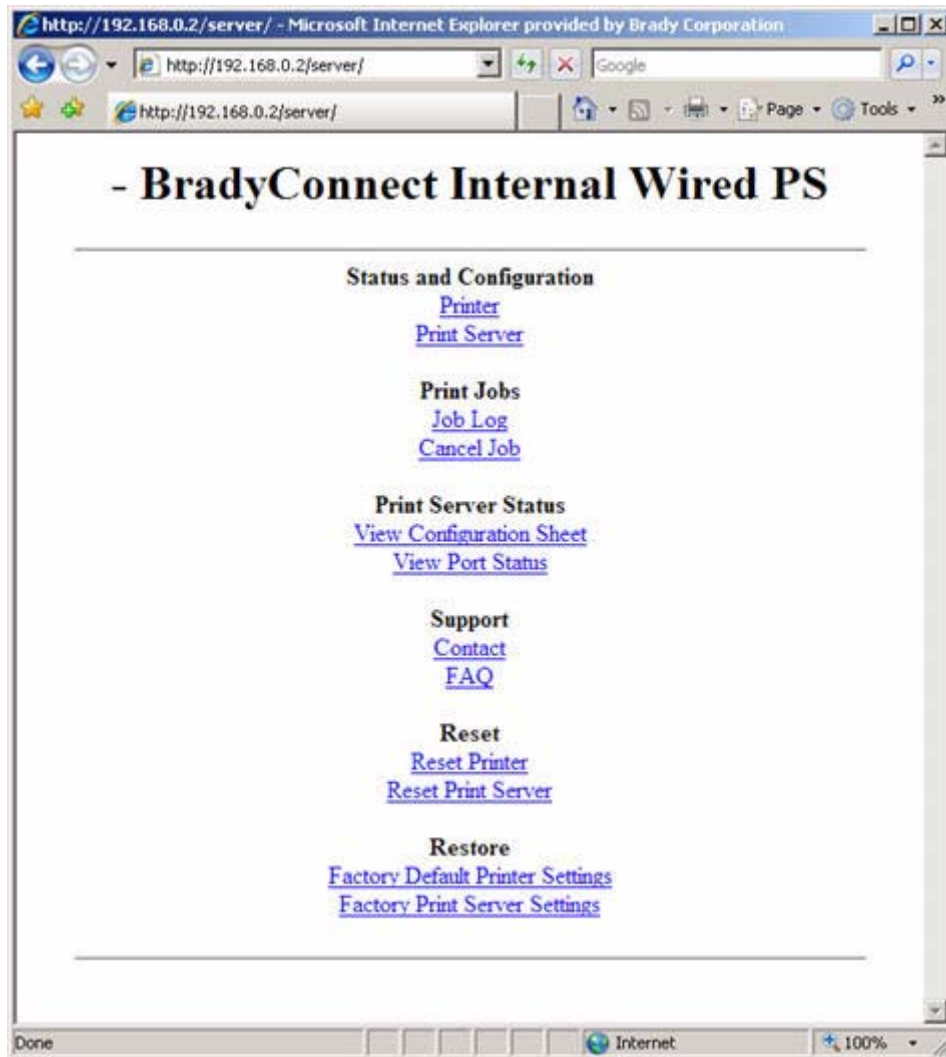
To access the print server settings, complete these steps:

1. Open a Web browser.
2. In the Address text-box, type your printer's IP address, and press Enter.
The Printer Home Page opens.

Figure 2 • Printer Home Page

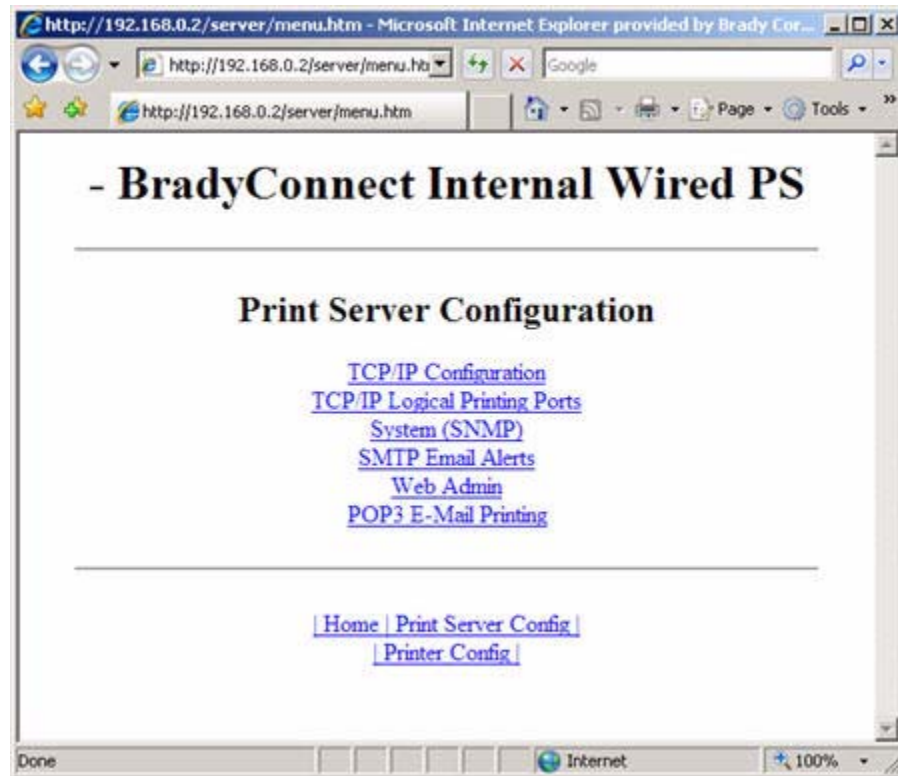
3. From the Printer Home Page, click Print Server Settings.
The Print Server Settings Page opens.

Figure 3 • Print Server Settings Page



4. From the Print Server Settings Page, click Print Server.
The Print Server Configuration page opens.

Figure 4 • Print Server Configuration



5. In the Print Server Configuration page, you have a menu from which to choose. Table 4 identifies each menu option page.

Table 4 • Menu Options

TCP/IP Configuration

You can change the TCP/IP configuration of the 10/100 Internal PS.

- **IP Address:** Use this feature to set the IP address if using the Permanent addressing method.
- **IP Address Resolution:** Use this feature to select the addressing method to use (Dynamic or Permanent).
- **Dynamic Protocols:** Use this feature to select the Dynamic Addressing method to use at startup. Choices include RARP, BOOTP, DHCP, Gleaning or Default Address.
- **Subnet Mask:** Use this feature to set the subnet mask. The subnet mask must follow the format XXX.XXX.XXX.XXX, where each XXX is a number between 0 and 255.
- **Default Gateway:** Use this feature to set the default gateway. This gateway will be used whenever messages need to be sent to another network. This gateway address must follow the format XXX.XXX.XXX.XXX, where each XXX is a number between 0 and 255.
- **WINS Server IP Address:** Use this feature to set or view the IP address of the WINS Server.
- **Connection Timeout Checking:** Use this feature to enable or disable the Connection Timeout feature. The timeout is used to close network TCP/IP connections that are idle for more than the number of seconds entered in the Timeout Value.
- **Timeout Value (secs):** Use this feature to set the Connection Timeout Value. The Valid range is 10 to 3600 seconds. The default is 300 seconds.
- **ARP Broadcast Interval (mins):** Use this feature to set interval for sending an ARP Broadcast. The valid range is 1 to 30 minutes. Address Resolution Protocol (ARP) broadcast packets allow other network devices to associate the print server's IP Address with its hardware address.
- **Base Raw Port Number:** Use this feature to set the raw TCP port that the print server will use for printing tasks. The default is port 9100.

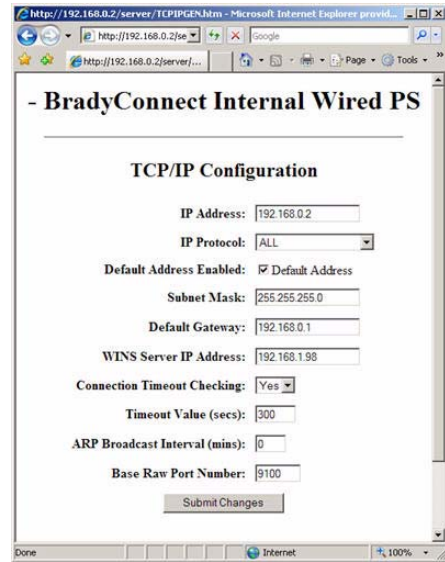


Table 4 • Menu Options (Continued)

TCP/IP Logical Printing Ports

Logical printers allow you to set up multiple pre- and post-processing configurations for each output port. Each logical port configuration can perform the following:

- Add user-configured strings before and after the print data.
- Remove unwanted characters from the beginning of the print data.
- Four logical printer configurations are supported for each output port on the printer. The configurations can be assigned to any port, and all of these configurations can be assigned to a single output port.

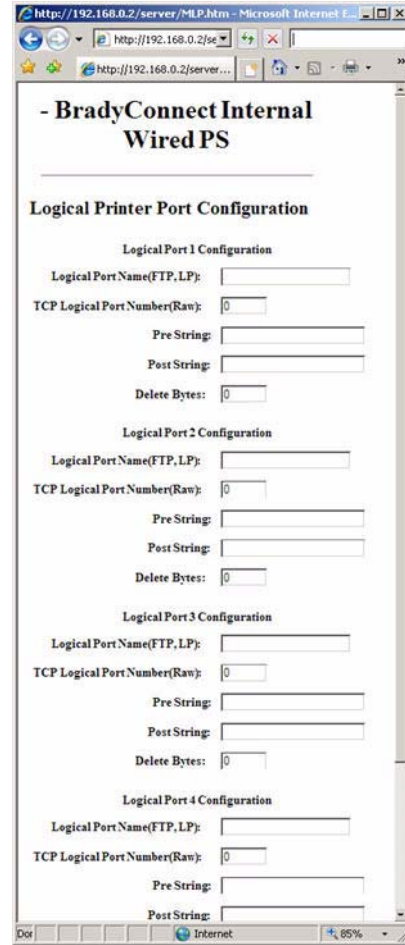
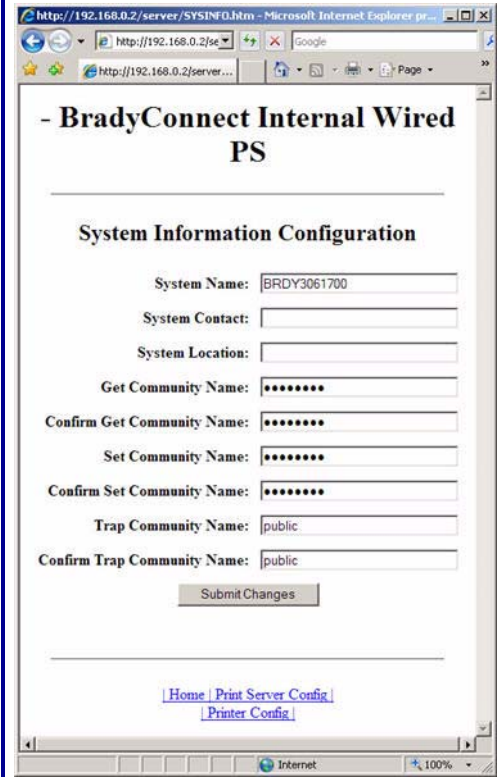


Table 4 • Menu Options (Continued)

System (SNMP)

This feature gives you the ability to manage multiple devices on a network, be it printers, computers, or other network-attached devices. On this page, you can define the SNMP system name, system location (10/100 Internal PS description), and other SNMP settings for your 10/100 Internal PS. Uses SNMP protocol.



SMTP Email Alert Configuration

This feature allows you to enter data regarding System Information on the network that is being used. Typically, a Network Administrator would use this.

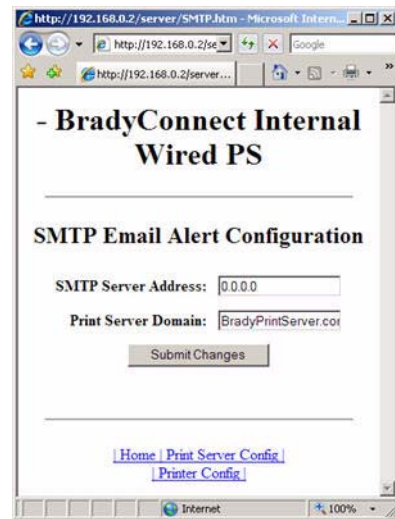
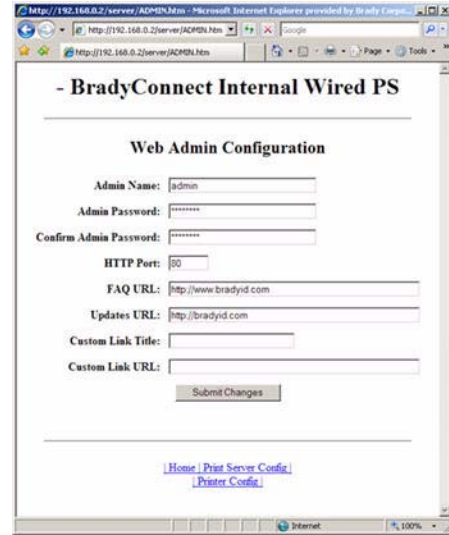


Table 4 • Menu Options (Continued)

Web Admin

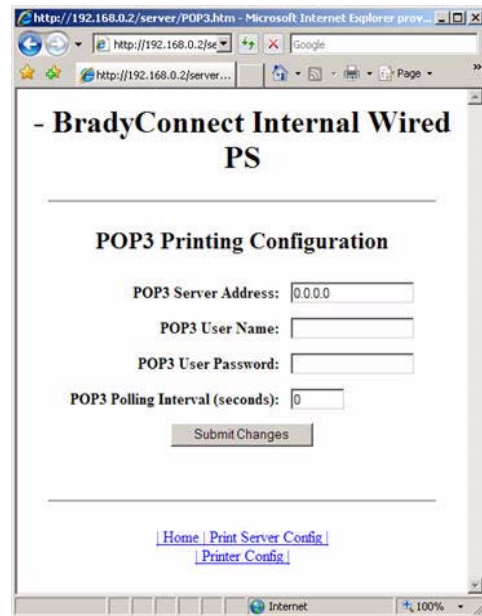
This page allows you to configure the Admin name and password. Links to upgrades and support information can also be altered.



POP3 Email Printing

This feature helps you set up the print server to receive email messages containing formats that can be printed. The POP3 settings must be set to retrieve emails from the email server.

Important • Brady recommends setting the POP3 polling interval no lower than 30. Some email servers will lock accounts after repeated login attempts.



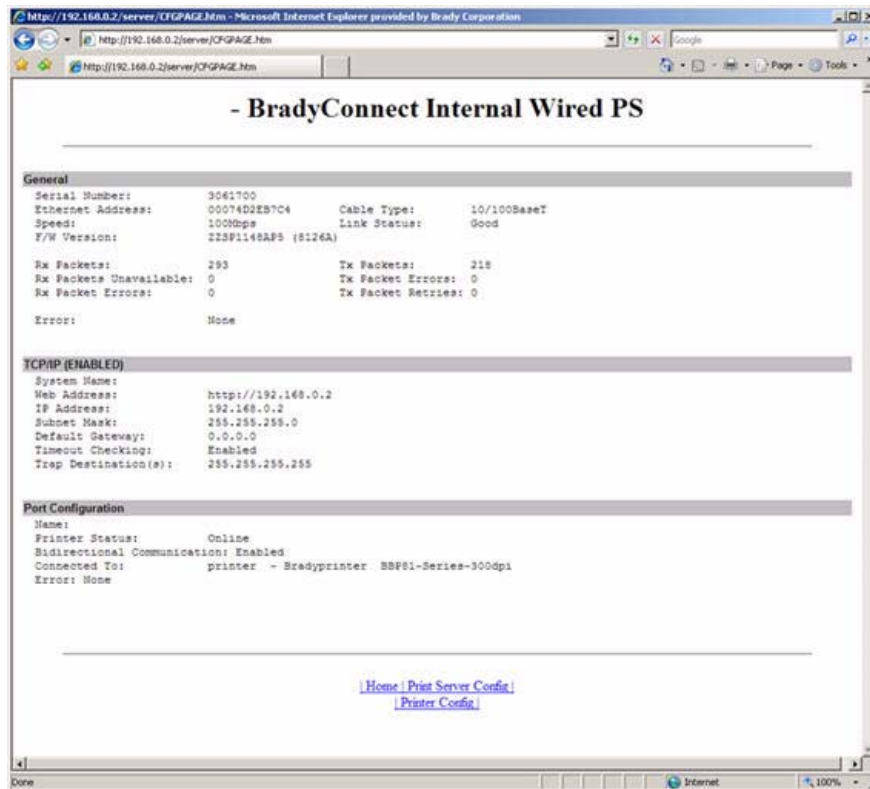
Print Server Status

From the Print Server page in the **Print Server Status** section, you can access the 10/100 Internal PS configuration sheet and port status.

To open the 10/100 Internal PS configuration page, complete this step:

1. From the Print Server Settings Page, click View Configuration Sheet.
The Configuration Sheet opens.

Figure 5 • Configuration Sheet



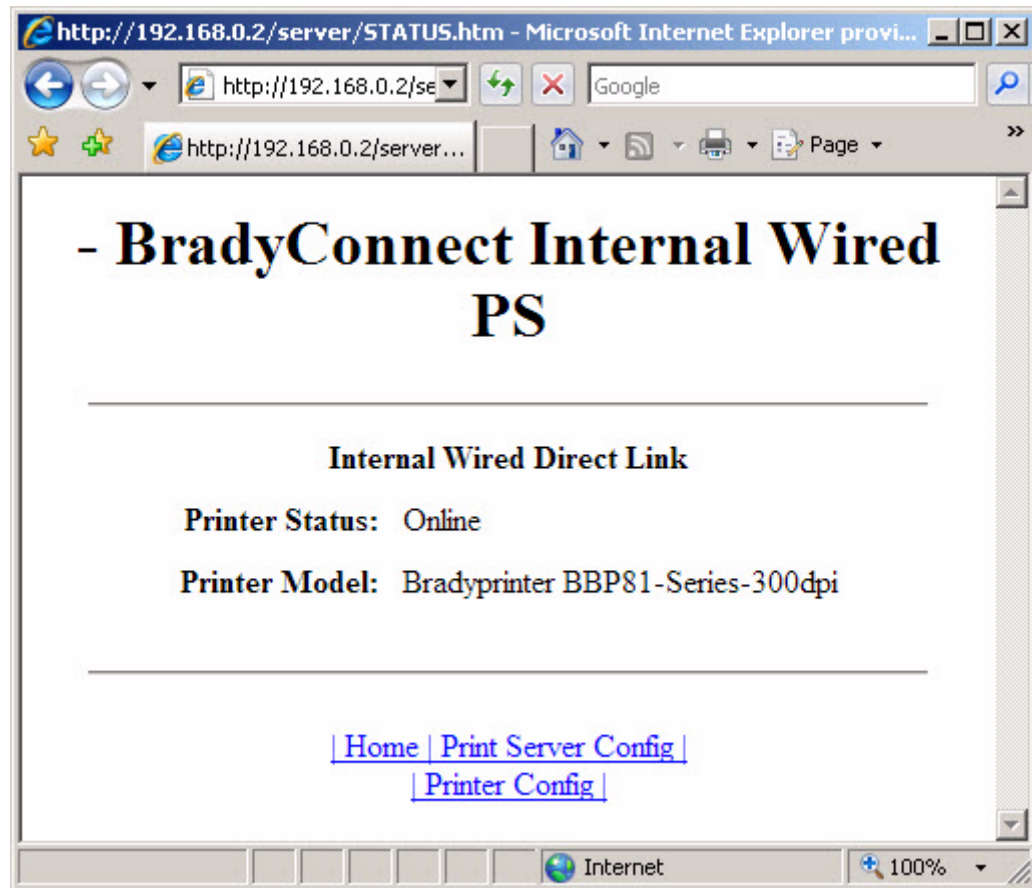
To view the port status, complete this step:



Important • The default user ID and password is required to access this page.

1. From the Print Server page, click View Port Status.
The Port Status page opens.

Figure 6 • Port Status



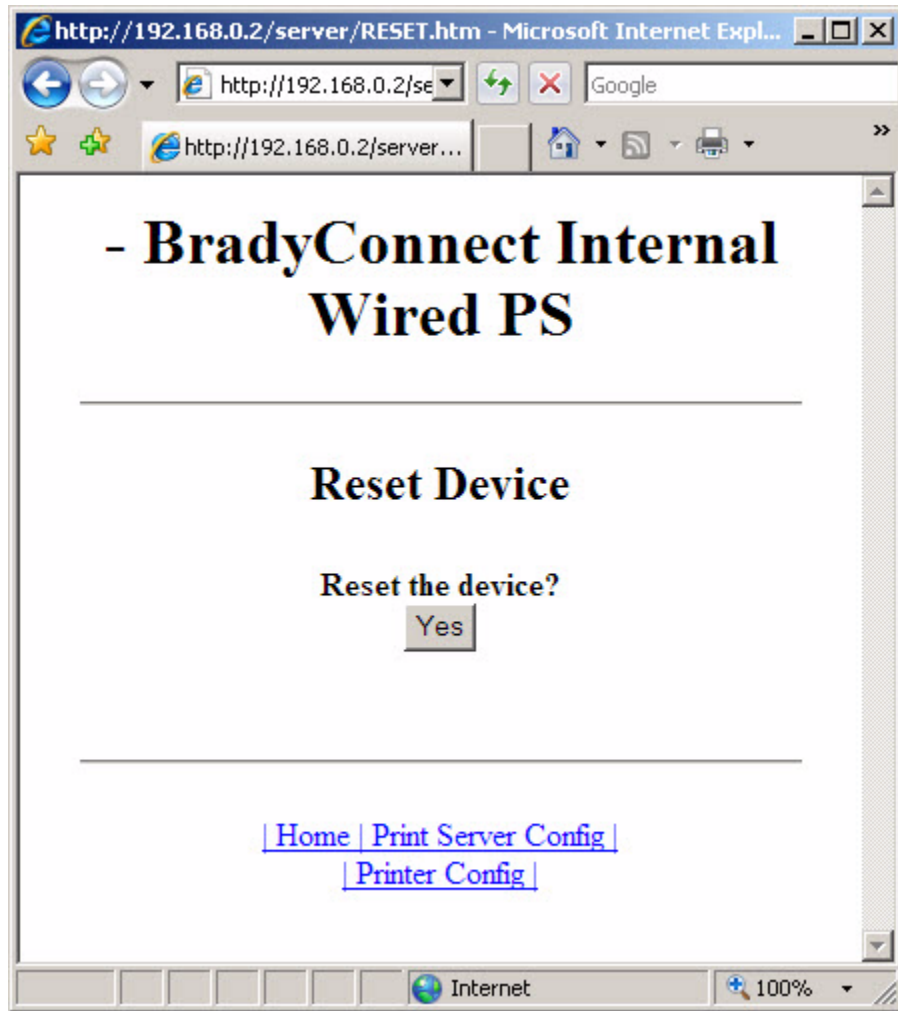
Reset

From the Print Server page in the Reset section, you can perform a soft reboot of the print server.

To reset the 10/100 Internal PS, complete these steps:

1. From the Print Server Settings page, click Reset Print Server.
The Reset Print Server page opens.

Figure 7 • Reset Print Server



2. To reset 10/100 Internal PS, click Yes.

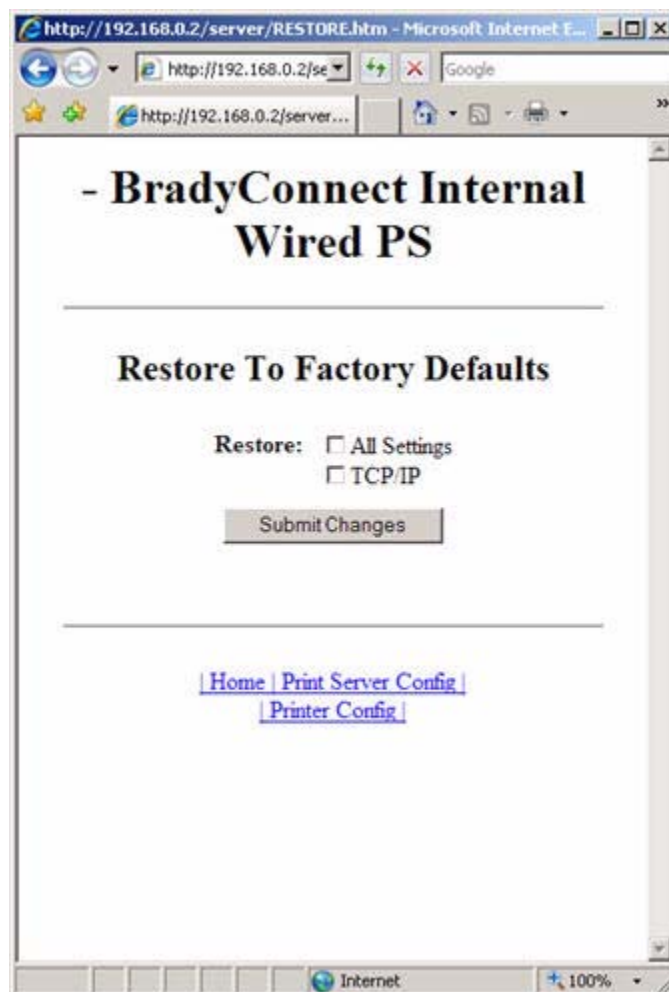
Restore

From the Print Server page in the Restore section, you can restore 10/100 Internal PS to the default factory settings:

To restore 10/100 Internal PS to the default factory settings, complete these steps:

1. From the Print Server page, click Factory Print Server Settings.
The Restore To Factory Defaults page opens.

Figure 8 • Restore to Factory Settings



2. Make the selections you want, and click Submit Changes.



Notes • _____



Getting Started

This chapter provides you with information and procedures for working with the most frequently used 10/100 Internal PS features.

Contents

Before You Begin	34
Using the Control Panel to View and Modify Print Server Parameters	37
Defaulting the 10/100 Internal PS	38
Defaulting the 10/100 PS on the BBP81 (4") and BBP81 (6") Printers	38
WebView	39
Assigning an IP Address	40
With Dynamic Host Configuration Protocol (DHCP)	40
Without DHCP	40
In a Non-Windows Environment	41

Before You Begin

10/100 Internal PS offers many features, but how you access and work with them is dependent on your environment. Before you begin, you need to get information from the 10/100 Internal PS configuration label.



Important • Make sure the printer is turned off (O).

Table 5 shows the minimum label widths needed to print a 10/100 Internal PS configuration label with different DPI printheads.

Table 5 • Label Width

DPI	Inches	MM
300	2.50	63.50

To print a network configuration label for BBP81 (4”) and BBP81 (6”) printers with a 10/100 Internal PS, complete these steps:

1. Turn on (I) the printer and let it complete its power-up cycle.
2. When the POST cycle is complete, press Setup/Exit to enter the Setup Mode.
3. Scroll through the parameters using the Plus (+ key) until you reach **List Network**.
4. Press Select to access **List Network**. Print+ displays.
5. Press Plus (+ key) to print the network configuration label.

Figure 9 • Network Configuration Label for BBP81 (4")/BBP81 (6")

Network Configuration	
BRADY Corporation Bradyprinter BBP81-Series-300dpi	
Wired.....	PRIMARY NETWORK
NC.....	LOAD FROM EXT?
Internal Wired.....	ACTIVE PRINTSRVR

External Wired	
ALL.....	IP PROTOCOL
000.000.000.000....	IP ADDRESS
255.255.255.000....	SUBNET MASK
000.000.000.000....	DEFAULT GATEWAY
000.000.000.000....	WINS SERVER IP
YES.....	TIMEOUT CHECKING
300.....	TIMEOUT VALUE
000.....	ARP INTERVAL
9100.....	BASE RAW PORT

Internal Wired*	
PERMANENT.....	IP PROTOCOL
192.168.000.002....	IP ADDRESS
255.255.255.000....	SUBNET MASK
000.000.000.000....	DEFAULT GATEWAY
172.020.010.101....	WINS SERVER IP
YES.....	TIMEOUT CHECKING
300.....	TIMEOUT VALUE
000.....	ARP INTERVAL
9100.....	BASE RAW PORT
00074d2eb7c4.....	MAC ADDRESS

Wireless	
ALL.....	IP PROTOCOL
000.000.000.000....	IP ADDRESS
255.255.255.000....	SUBNET MASK
000.000.000.000....	DEFAULT GATEWAY
000.000.000.000....	WINS SERVER IP

YES.....	TIMEOUT CHECKING
300.....	TIMEOUT VALUE
000.....	ARP INTERVAL
9100.....	BASE RAW PORT
NO.....	CARD INSERTED
0000H.....	CARD MFG ID
0000H.....	CARD PRODUCT ID
000000000000.....	MAC ADDRESS
YES.....	DRIVER INSTALLED
INFRASTRUCTURE.....	OPERATING MODE
125.....	ESSID
100.....	TX POWER
ON.....	1 Mb/s
ON.....	2 Mb/s
ON.....	5.5 Mb/s
ON.....	11 Mb/s
11 Mb/s.....	CURRENT TX RATE
DIVERSITY.....	RECEIVE ANTENNA
DIVERSITY.....	XMIT ANTENNA
OPEN.....	WEP TYPE
NONE.....	WLAN SECURITY
1.....	WEP INDEX
020.....	POOR SIGNAL
LONG.....	PREAMBLE
NO.....	ASSOCIATED
ON.....	PULSE ENABLED
15.....	PULSE RATE
OFF.....	INTL MODE
07FFH.....	CHANNEL MASK

FIRMWARE IN THIS PRINTER IS COPYRIGHTED

6. Press Setup/Exit to exit the Setup Mode.
7. From the network configuration label, you need to look for these numbers:
 - IP PROTOCOL
 - IP ADDRESS
 - SUBNET MASK
 - DEFAULT GATEWAY
 - MAC ADDRESS
8. On the network configuration label that prints out for your 10/100 Internal PS device, circle the aforementioned settings. You can now proceed to [Assigning an IP Address on page 40](#).

Using the Control Panel to View and Modify Print Server Parameters

You may change several print server parameters using the control panel on the printer. [Table 6](#) shows the parameters that may be viewed or modified through the printer’s control panel for BBP81 (4”) and BBP81 (6”) printers with firmware version ZZSP1148A or later.

Table 6 • Print Server Parameters

Parameter	Function
LIST NETWORK	Print a Network Configuration Label Use this parameter to print a network configuration label (see Figure 9 on page 35).
IP PROTOCOL¹	View the Method to Obtain an IP Address This parameter tells if the user (permanent) or the server (dynamic) selects the IP address. If a dynamic option is chosen, this parameter tells the method(s) by which the print server (wired or wireless) receives the IP address from the server. <i>Selections:</i> ALL, BOOTP, DHCP, DHCP AND BOOTP, PERMANENT <i>Default Value:</i> All
IP ADDRESS¹	View the Print Engine’s IP Address <i>Default Value:</i> 0.0.0.0
SUBNET MASK¹	View the Subnet <i>Default Value:</i> 255.255.255.0
DEFAULT GATEWAY¹	View the Gateway <i>Default Value:</i> 0.0.0.0
RESET NETWORK¹	Reset the Wired or Wireless Network Use this parameter to reinitialize the wireless radio card and the print server (wired or wireless) when the wireless print server is running. This parameter also causes any wireless radio card in the printer to reassociate to the wireless network.
ACTIVE PRINTSRVR	View the Active Print Server <i>Selections:</i> Wired, Wireless <i>Default Value:</i> Wired
PRIMARY NETWORK	View the Primary Network <i>Default Value:</i> Internal Wired

¹ These parameters appear after the system recognizes the existence of a BradyConnect print server (wired or wireless). After the print server is recognized, all zeroes (000.000.000.000) will display until the printer obtains an IP address or defaults to address 192.168.254.254.

Defaulting the 10/100 Internal PS

This section provides you with instructions for defaulting the 10/100 Internal PS to factory settings using the control panel and WebView.

Defaulting the 10/100 PS on the BBP81 (4”) and BBP81 (6”) Printers

To default the 10/100 Internal PS to factory settings using the control panel on the BBP81 (4’) or BBP81 (6”) printers, complete these steps:

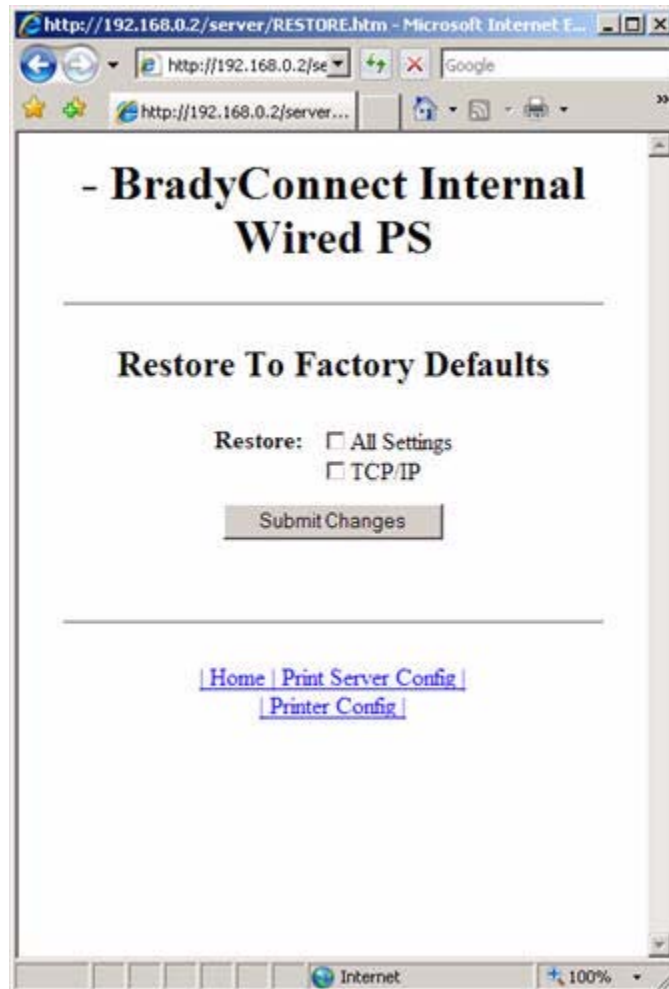
1. From the control panel, press Setup/Exit two times.
2. Press Plus (+ key) five times.
The control panel will read **DEFAULT NET**.
3. Press Setup/Exit to save the change.
4. After the printer defaults all settings, the control panel will show **PRINTER READY**.

WebView

To default the 10/100 Internal PS to factory settings using WebView, complete these steps:

1. From the BradyConnect PrintServer view, click Factory Print Server Settings.
The Restore to Factory Defaults page opens:

Figure 10 • Restore to Factory Defaults



2. Enable the check box for the settings you want to reset, and click Submit Changes.



Important • During the reset cycle, the web pages are unavailable. Upon completion, check the IP address of the 10/100 Internal PS as it may have changed during the reset cycle.

Assigning an IP Address

Before you can begin working with 10/100 Internal PS, you must get or assign an IP address for the 10/100 Internal PS device.

There are three different ways to assign an IP address. Here is a list and a brief description of each method:

- Web View — Browser-enabled method to assign an IP address.
- DHCP — See your LAN administrator for more information.
- Telnet — DOS command to assign an IP address.



Important • Throughout the procedures in this chapter, there are some features that require the default User ID and/or default password. If you are prompted, these are the defaults:

- **User ID:** admin
- **Password:** 1234

With Dynamic Host Configuration Protocol (DHCP)

If your network uses DHCP, your 10/100 Internal PS device is assigned a temporary IP address.



Note • Check with your Network Administrator to see whether your network uses DHCP.

Without DHCP

If your network does not use a dynamic IP addressing system (such as DHCP), you need to set a permanent IP address for the 10/100 Internal PS device.

In a Non-Windows Environment

These steps can be used to assign an IP address using the control panel (LCD).

Assigning an IP address from the printer LCD

To assign an IP address from the printer LCD, complete these steps:

1. Connect Ethernet before turning on the printer.
2. Turn on **(I)** the printer and wait until the LCD says **PRINTER READY**. If you do not have a network cable in the port, the 10/100 Internal PS prints the configuration label when it is ready.
3. On the printer control panel, press SETUP/EXIT.
4. On the printer control panel, press PREVIOUS until you reach the **NETWORK SETTINGS** menu item.
5. You can edit any of the following network settings in order to communicate with any 10/100 Internal PS in your network environment.



Important • To change any of these settings, you need to enter the printer password. The default password is 1234.

- **ip resolution** (dynamic, permanent): The printer menu item **IP RESOLUTION** must be set to **PERMANENT** if attempting to assign the IP address from the control panel.
- **default gateway** (default setting of 000.000.000.000)
- **subnet mask** (default setting 255.255.255.0)
- **ip address** (if initial default setting is 0.0.0.0, after 2 minutes this defaults to **192.168.254.254**)
- **ip protocol** (gleaning only, RARP, BOOTP, DHCP, DHCP and BOOTP, all)

Assigning an IP Address via a Telnet Session

If your environment is not Windows-based, this section is for you. However, this method can be used in a Windows environment, too.

The methods used for assigning an IP address with a Telnet session are **Static Route** and **Gleaning**.



Important • This applies to any TCP/IP-capable workstation/host networked with the Brady printer. Both, the workstation/host and the 10/100 Internal PS, must be on the same network segment.

Before you can Telnet to the 10/100 Internal PS and configure it, you must first assign the 10/100 Internal PS a temporary IP address.

Static Route

To use this method, complete these steps:

1. Turn on **(I)** the printer and wait for 2 minutes to allow for the device to complete the self-test.

During this time, the 10/100 Internal PS performs an address broadcast. If no address is assigned to the unit (via DHCP or Bootp), it uses a default address. The default address for 10/100 Internal PS is **192.168.254.254**. Print the 10/100 Internal PS configuration label to confirm the address. For details, see [Before You Begin on page 34](#).

2. You can use the `route add` command to place the default IP address into the workstation's network routing table.



Example • In the next step, **** is the IP address on the 10/100 Internal PS configuration label.

3. At the workstation/host command prompt (in Windows, at the DOS prompt), type:

```
route add **** "IP address of the workstation" 0
```



Note • The zero (0) placed at the end of the “`route add`” command is optional on some systems.

4. Telnet to the 10/100 Internal PS by typing:

```
"Telnet xxx.xxx.xxx.xxx"
```

(where xxx... is the IP address of the printer).

The password is 1234.

5. At this point, you can alter the settings as desired. When complete, do a reset and allow the 10/100 Internal PS self-test to complete before proceeding with any communications activity.

Gleaning

A method by which the 10/100 Internal PS uses the IP address of the first ping packet that is sent to its hardware address.



Note • Gleaning works **only** on local subnets at routers. It does not pass Address Resolution Protocol (ARP) broadcasts.

To use this method, complete these steps:

1. Add an entry to the ARP table that assigns an IP address to an Ethernet (hardware) address.

The syntax for this command is:

```
arp -s "temporary ipaddress of print server" "MAC Address  
(print server hardware address)" arp -s <temporary ip  
address> <MAC Address>
```



Example • You would type:

```
arp -s 10.3.50.59 00-07-4d-68-1D-B9-86
```

2. Power cycle the printer.
3. As the printer reboots, begin a continuous ping to the address assigned previously.



Note • Most UNIX systems use a continuous ping.

To use a continuous ping from a Windows host, you must issue the command:
`ping -t "ipaddress".`

4. When the 10/100 Internal PS begins to respond, stop the ping activity.
In Windows, Ctrl + C halts the pinging.
5. Telnet to the 10/100 Internal PS and assign the appropriate IP address, subnet mask, and gateway, if applicable.
6. Once this is complete, reset the 10/100 Internal PS.
For details on resetting the 10/100 Internal PS, see [Reset on page 30](#).



Notes • _____

BradyConnect WebView

The appendix provides you with detailed information that allows you to use the enhanced functionality of your BradyConnect-enabled printer with the 10/100 Internal PS.

Contents

WebView	46
Home Page	46
View Printer Configuration	47
Print Server Settings	50
View and Modify Printer Settings	51
Setting the Primary Network Print Server	57
TCP/IP Settings	59
Printer Controls	63
Directory Listing	64
Alert Setup	65
Setting Alerts	66
Establishing Email Alert Messaging	69
Checking 10/100 Internal PS Configuration Settings	72
Browser	72
Configuring the Print Server	75
Sending Email to Your Brady Printer	76

WebView

WebView provides the System Administrator or user complete, easy, one-step control over the printing environment. It provides real-time configuration, control, and monitoring capabilities with the convenient graphic interface of a Web browser.

The Web pages returned by Brady printers are not static. They contain real-time information about the printer's present state of operation, including on-line status, error conditions, and all printing parameters.

Home Page



Note • To access the printer's Web page, you need the IP address. For instructions on getting the IP address, see [Assigning an IP Address on page 40](#).

When you connect to the print server, the Printer Home Page displays. From this page you can go to any other page in the Webview, allowing you to modify or view the following:

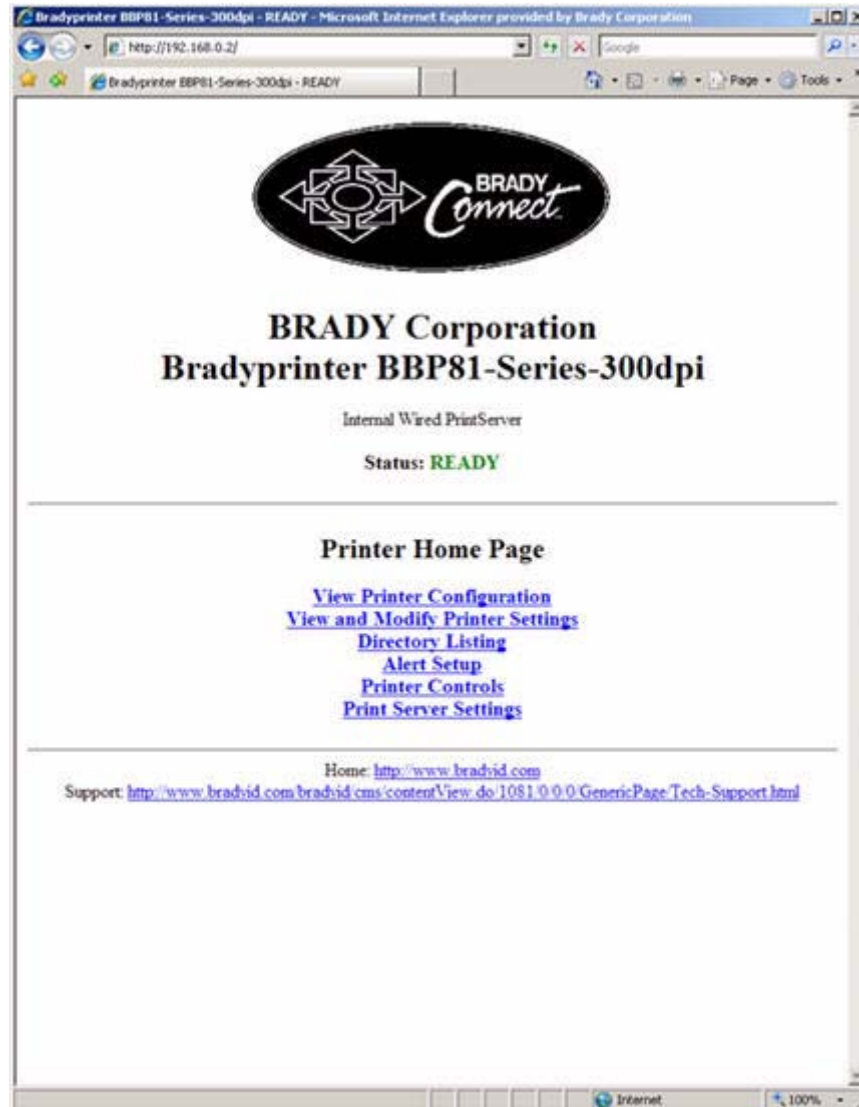
- Network Status, Error, and Warning reports
- BradyConnect 10/100 Internal PS configuration
- Printer settings
- Directories of objects stored in Flash memory and RAM devices
- Objects, stored fonts, images, programs, and ZPL II formats
- Brady Worldwide Inc. support and home pages

Additionally, from the Home Page you can visit the Brady website, www.bradyid.com, or the Brady Technical Support page.

To open WebView for your printer, complete these steps:

1. Open a Web browser.
2. In the Address text-box, type your printer's IP address, and press Enter.
The Printer Home Page opens.

Figure 11 • Printer Home Page



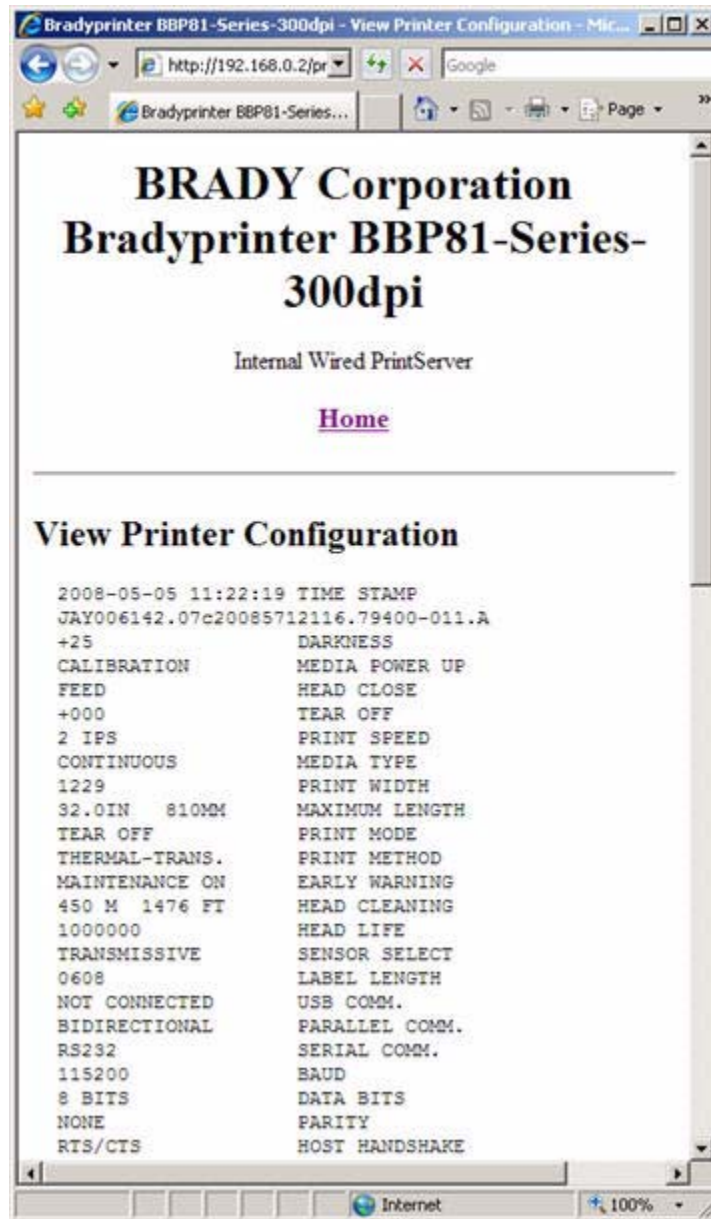
View Printer Configuration

The View Printer Configuration menu option provides accurate, up-to-the-minute information on the printer's current state. An administrator can conveniently find any information on the virtual configuration label and also check on the status of printer ports.

To see the View Printer Configuration menu option, complete these steps:

1. From the Printer Home Page, click View Printer Configuration.
The WebView displays the configuration settings.

Figure 12 • Configuration Settings



2. To update the printer information from this view, click Refresh and the printer sends current information to the Web browser.
3. When you are finished reviewing:

If...	Then...
You want to return to the Home page	Click the Home link.
You want to print a label	Scroll to the bottom of this page and click Print Label.

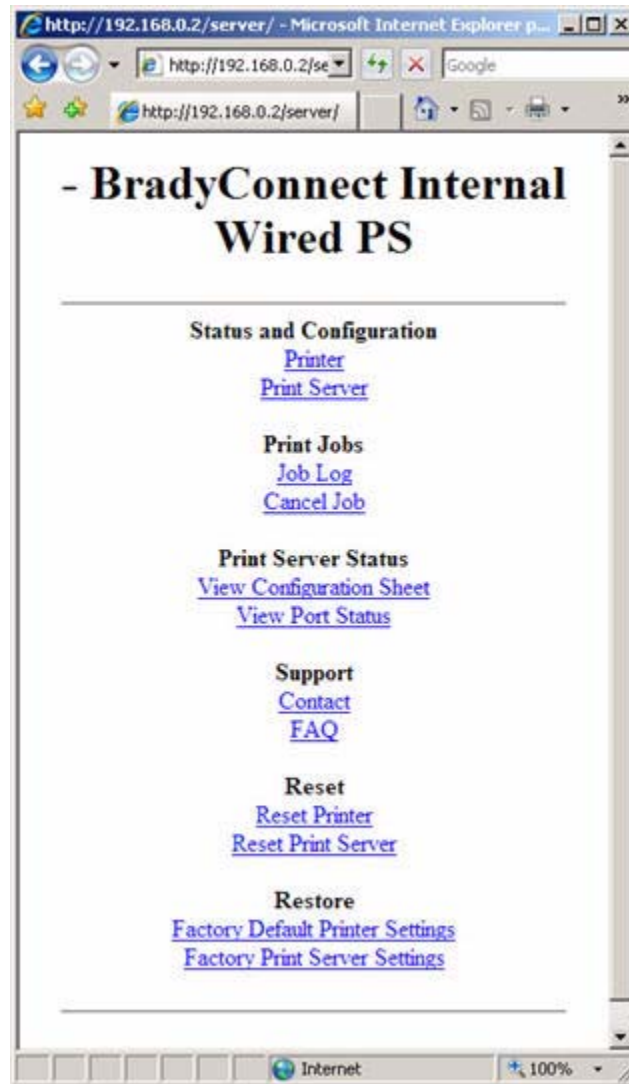
Print Server Settings

This section provides you with instructions for viewing the current printer settings.

To view the print server menu, complete this step:

- From the Printer Home Page, click Print Server Settings.
The Print Server Settings Page opens.

Figure 13 • Print Server Settings Page



View and Modify Printer Settings

This section provides you with steps for accessing and modifying printer settings with a BradyConnect-enabled printer. It also provides illustrations of the various pages you can access.



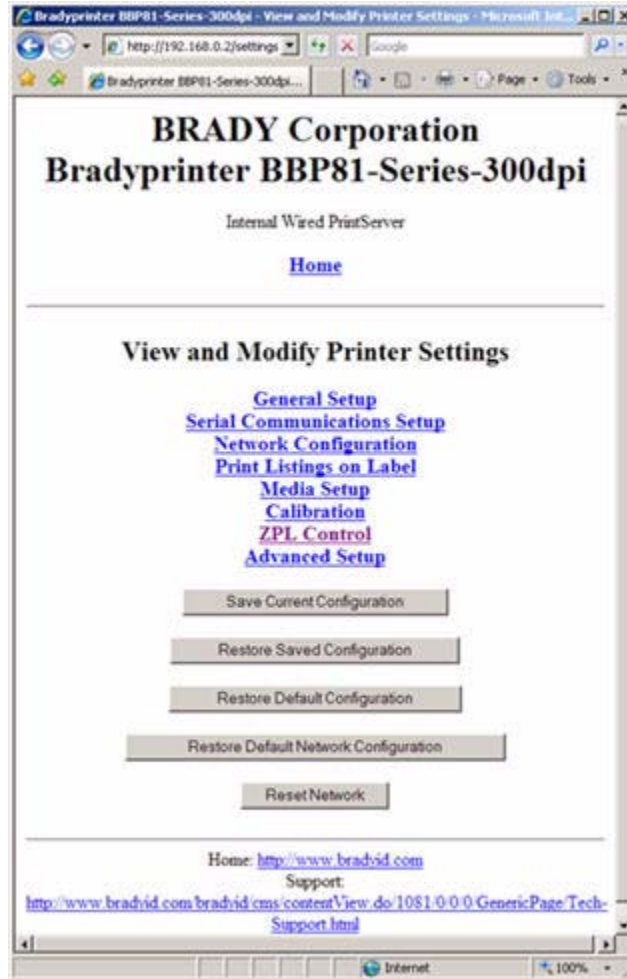
Important • To apply changes made in this section, you need to use the default password for your printer:

Password: 1234

To view and modify printer settings, complete these steps:

1. From the Printer Home Page, click View and Modify Printer Settings.
The View and Modify Printer Settings page opens.

Figure 14 • View and Modify Printer Settings



2. On the View and Modify Printer Settings page, you have a menu to choose from. Table 7 identifies each menu option page.



Note • Refer to the User Guide for a further explanation of these options.

Table 7 • Menu Options

<p>General Setup</p>	
<p>Serial Communications Setup</p>	

Table 7 • Menu Options (Continued)

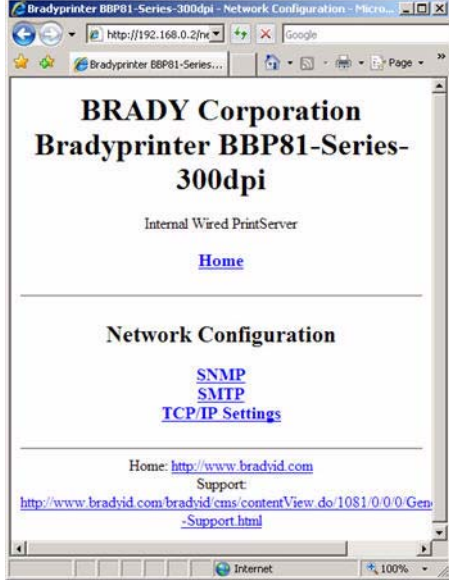
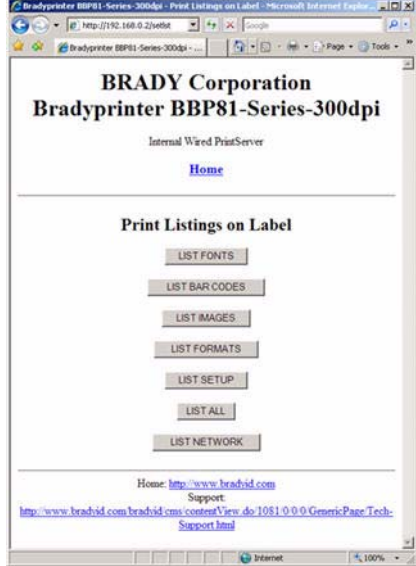
<p>Network Configuration</p>	
<p>Print Listings on Label</p>	

Table 7 • Menu Options (Continued)

Media Setup



Calibration

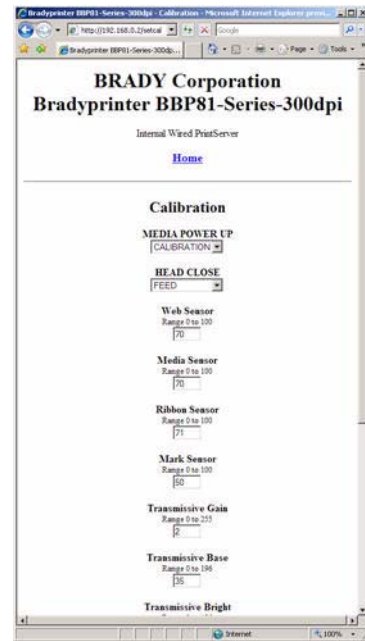
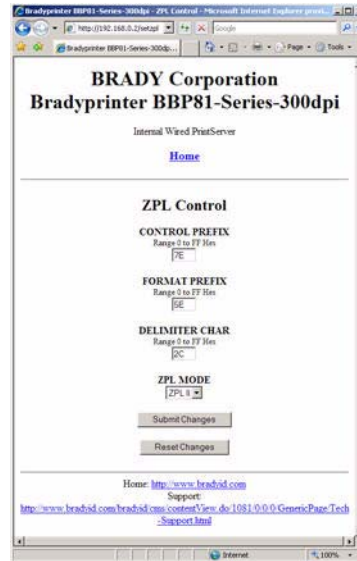
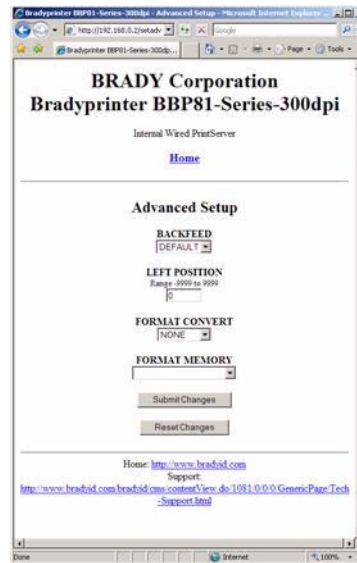


Table 7 • Menu Options (Continued)

ZPL Control



Advanced Setup



Setting the Primary Network Print Server

The BBP81 (4”) and BBP81 (6”) printers support the simultaneous installation of an internal, external, and a wireless print server. Even though all three print servers may be installed, only one is connected to the network and is the active print server. [Table 8](#) outlines priorities and identifies which device becomes the active print server when multiple print servers are installed.

Table 8 • Primary Print Server

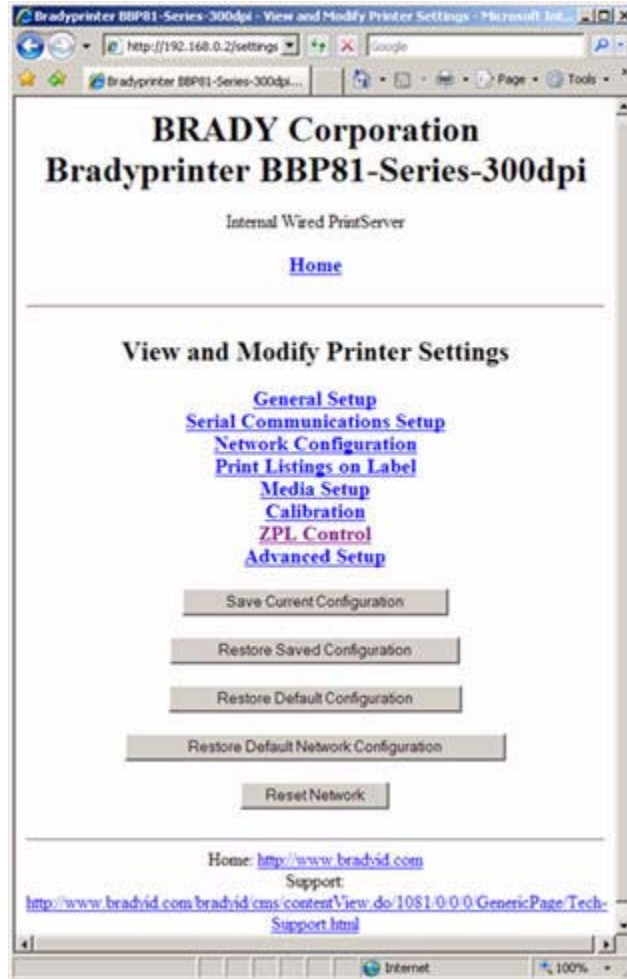
If the Primary Network is set to:	Installed and Connected to a Live Ethernet Network		Then, the Active Print Server will be:
	Internal	External	
Wired	X	X	Internal
		X	External

This section provides you with steps for changing the primary network.

To change the primary network, complete these steps:

1. From the Printer Home Page, click View and Modify Printer Settings.
The View and Modify Printer Settings page opens.

Figure 15 • View and Modify Printer Settings



2. When prompted, enter the printer's password.

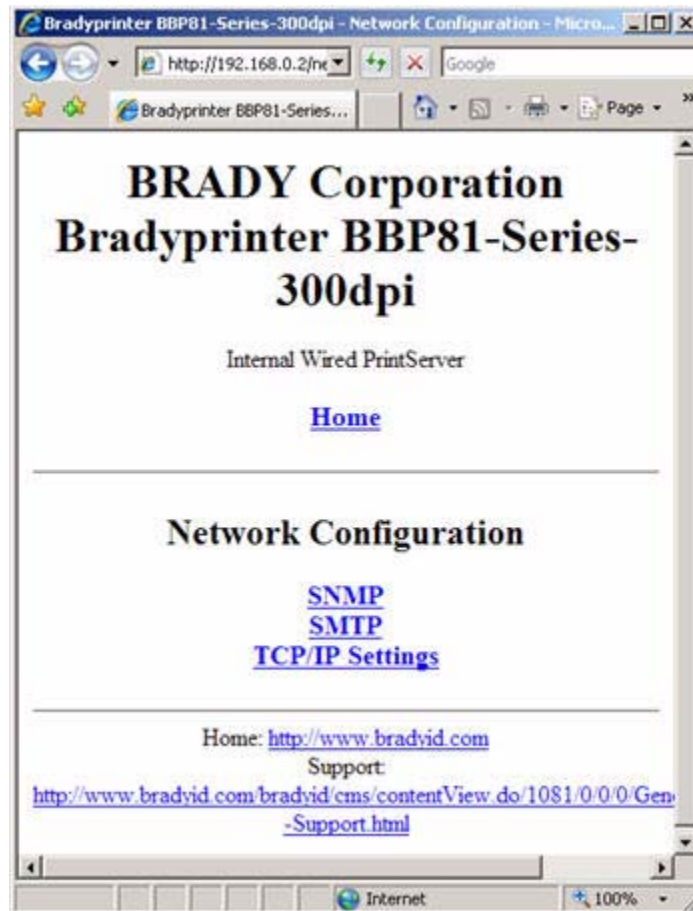


Important • To apply changes made in this section, you need to use the default password for your printer:

Password: 1234

3. Click Network Configuration.
The Network Configuration page opens.

**Figure 16 • Network Configuration Page
(BBP81 (4'')/BBP81 (6'') Web Page Shown)**



TCP/IP Settings

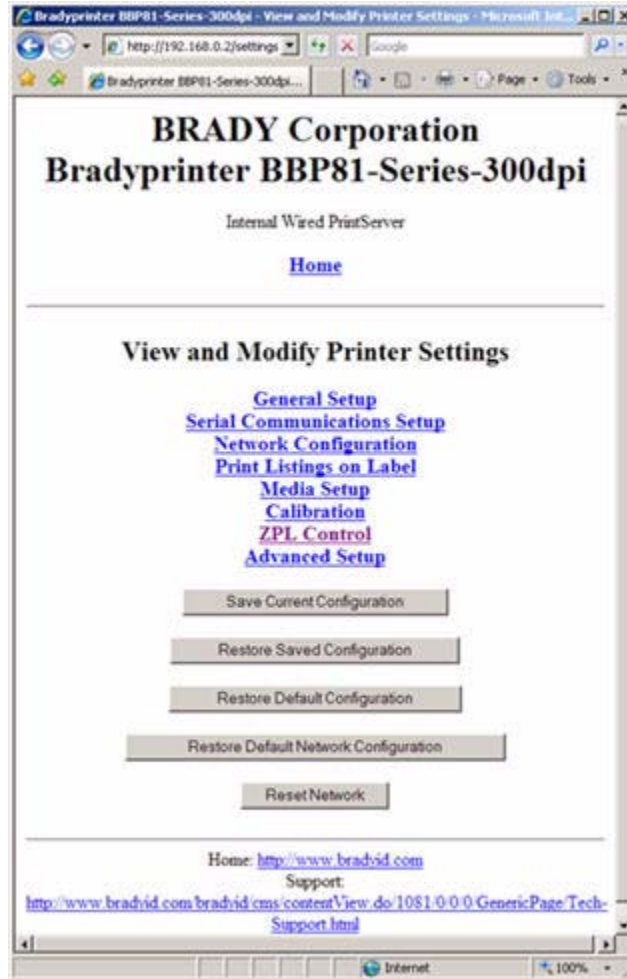
TCP/IP settings may be viewed and modified in this section. Several of these settings include:

- IP Address
- IP Protocol
- Subnet mask
- Default gateway

To change the TCP/IP settings, complete these steps:

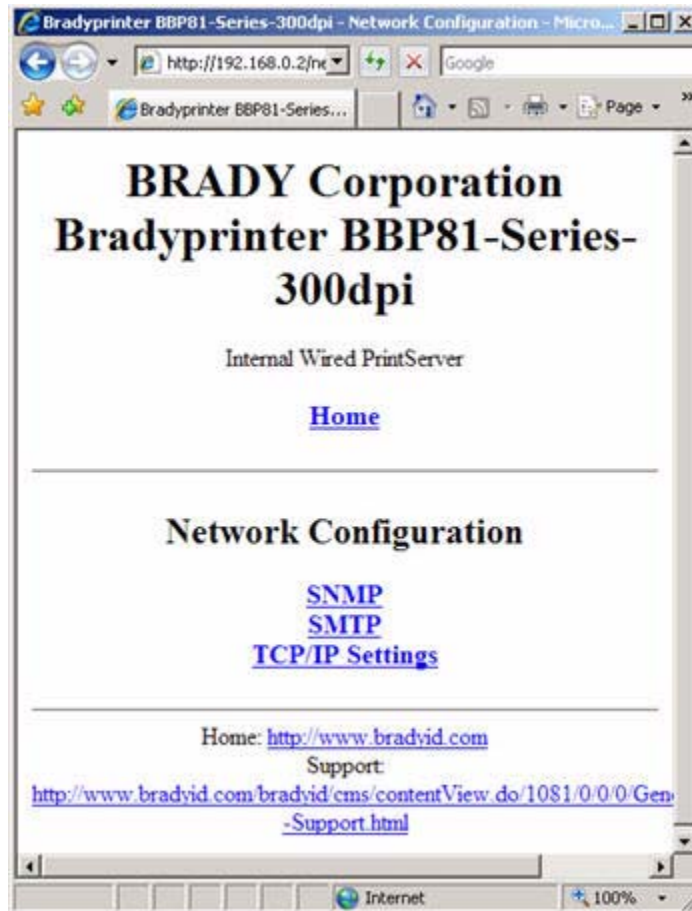
1. From the Printer Home Page, click View and Modify Printer Settings.
The View and Modify Printer Settings page opens.

Figure 17 • View and Modify Printer Settings



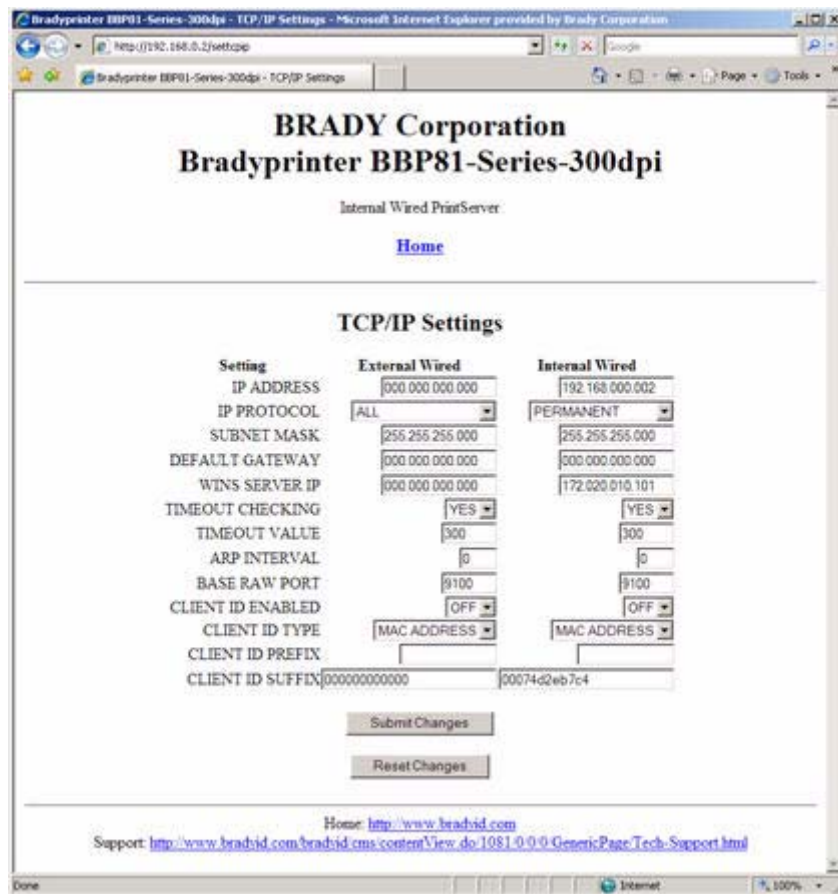
2. Click on Network Configuration.
The Network Configuration page opens.

Figure 18 • Network Configuration Page
(BBP81 (4")/BBP81 (6")) Web Page Shown)



3. Click TCP/IP Settings.
The TCP/IP Settings page opens.

Figure 19 • TCP/IP Settings Page
(BBP81 (4'')/BBP81 (6'') Web Page Shown)



4. From the TCP/IP Settings page, you can modify settings for all installed print servers.



Note • The BBP81 (4'') and BBP81 (6'') printers support the simultaneous installation of an internal, external, and a wireless print server. See [Table 8 on page 57](#) for more detailed information on priorities and setting the active print server when multiple print servers are present.

5. Click **Submit Changes** to accept and save your changes or click **Reset Changes** to revert to your previous settings.

Printer Controls

This page offers control over basic printer functions.

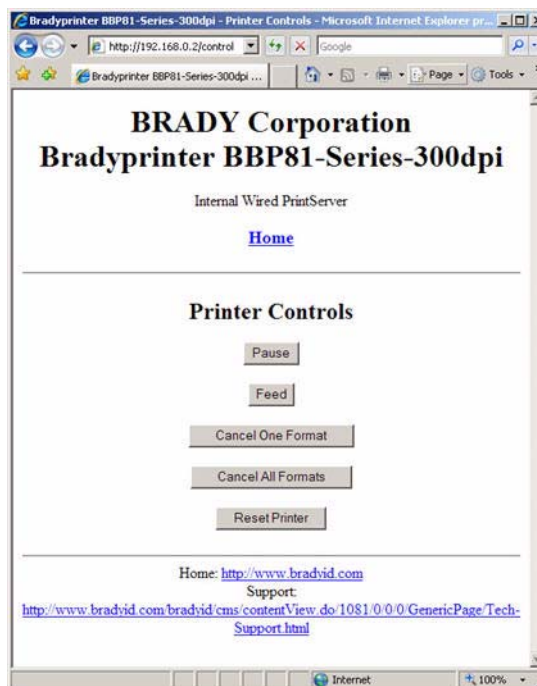
Other functions are also accessible from this page. These include:

- Feed — causes printer to feed one label.
- Cancel One Format — cancels the currently printing format.
- Cancel All Formats — cancels all formats.
- Reset Printer — causes printer to perform its standard reset without cycling power.

To view Printer Controls, complete these steps:

1. From the Printer Home Page, click Printer Controls.
This Printer Controls page opens.

Figure 20 • Printer Controls



Important • In this view, you must have administrative rights to make changes to the printer controls.

Directory Listing

The directory page provides a listing of all file system devices (B:, E:, R:, Z:). The size, name, and location of each stored object appears.

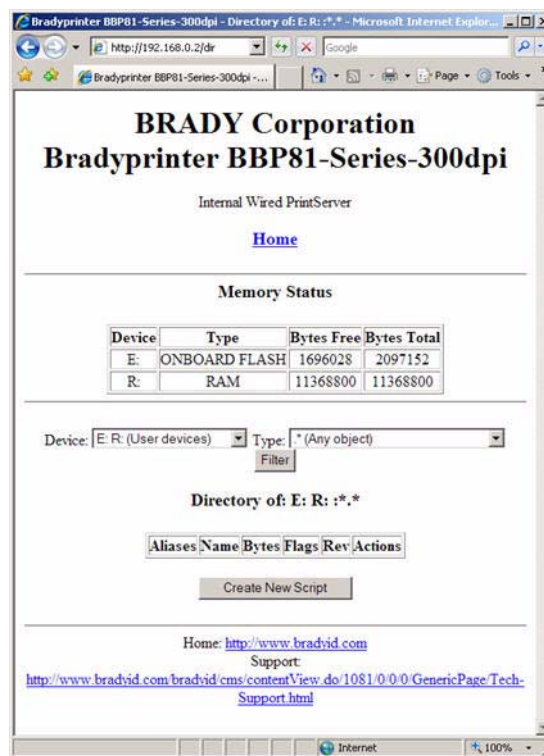
Buttons are available to perform file management operations on the objects. The file management operations include:

- Delete object — Not available for objects in read-only memory (Z:).
- Copy object to a new name and/or device — Not available for objects in read-only memory (Z:).

To view the Directory Listing, complete these steps:

1. From the Printer Home Page, click Directory Listing.
The Directory Listing page opens. There are several fields to select in this view.

Figure 21 • Directory Listing



2. To create a script, click Create New Script.

Alert Setup

To configure the printer's interaction with BradyConnect Alert to be completely functional, SNMP settings must be established in these areas:

- The printer, via the WebView interface.
- The Alert Printer Management Utility for logging SNMP traps.

The BradyConnect messaging system provides for more than SNMP notification. Alerts can be routed to various destinations:

- TCP
- UDP
- email
- serial port
- parallel port destinations
- SNMP
- USB

Setting Alerts

Your 10/100 Internal Print Server allows you to configure your printer to send unsolicited Alerts.

Table 9 shows the conditions that can trigger alerts.

Table 9 • Alerts

Alert Type	Error Condition
BradyConnect Alerts	<ul style="list-style-type: none">• Media out• Ribbon out• Printhead over-temp warning• Printhead under-temp warning• Head open• Power supply over-temp• Ribbon warning (in direct-thermal mode)• Rewind full• Cut error• Printer paused• PQ job completed• Label taken• Head element out• Power on

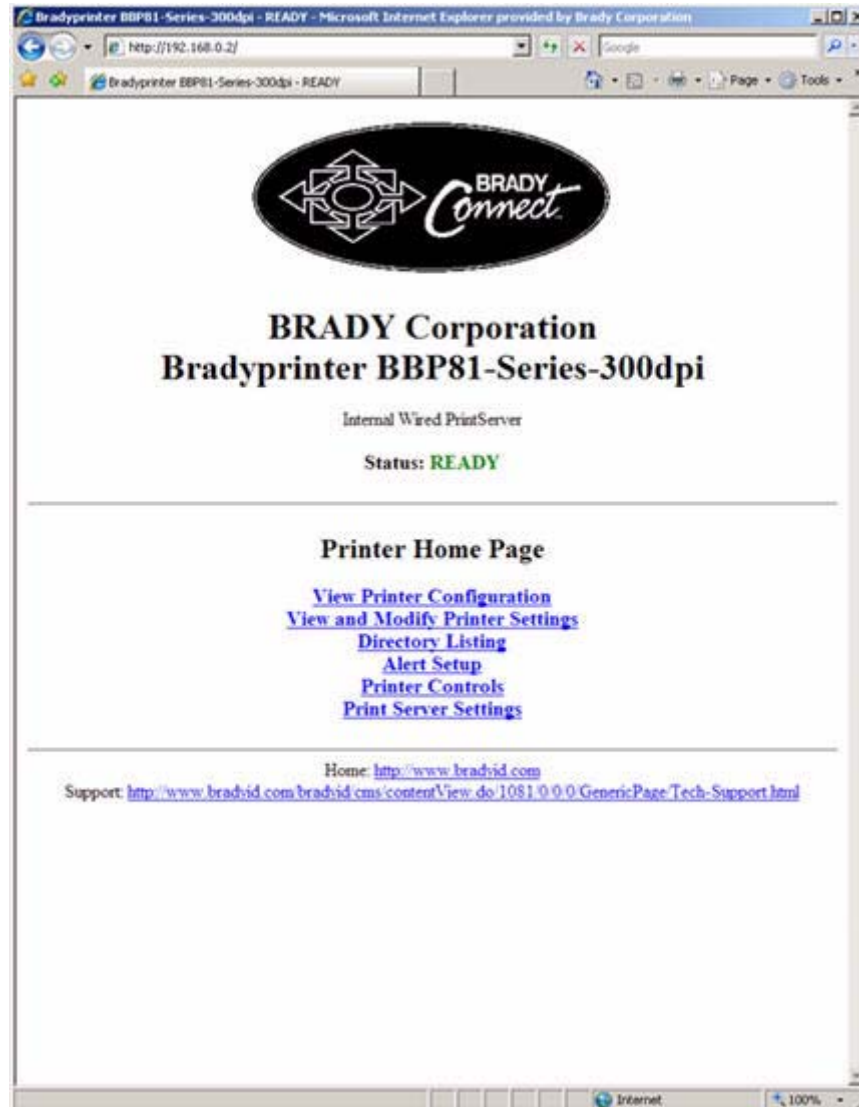
This section has step-by-step instructions for setting up an alert using BradyConnect.



Important • If you do not have a BradyConnect-enabled printer, these steps will not work.

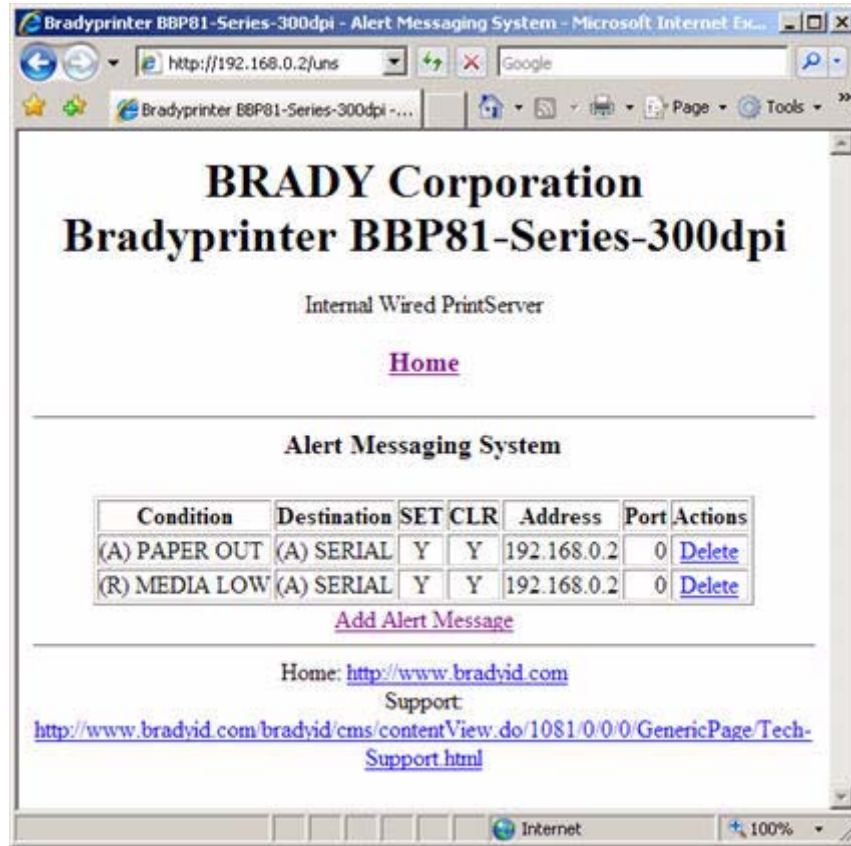
To view Alert Setup using BradyConnect, complete these steps:

1. Open a Web browser.
2. In the Address text-box, type your printer's IP address, and press Enter.
The Printer Home Page opens.

Figure 22 • Printer Home Page

3. From the Printer Home Page, click Alert Setup.
The Alert Messaging System page opens.

Figure 23 • Alert Messaging System



To add an alert, you need the default password.

4. To add an alert, click Add Alert Message.
5. Select accordingly.
6. You can use BradyConnect Alert to monitor alerts set through a BradyConnect-enabled printer.

From this Web page, you can add alert messages notifying you when a printer is out of paper, needs a ribbon, and so on.

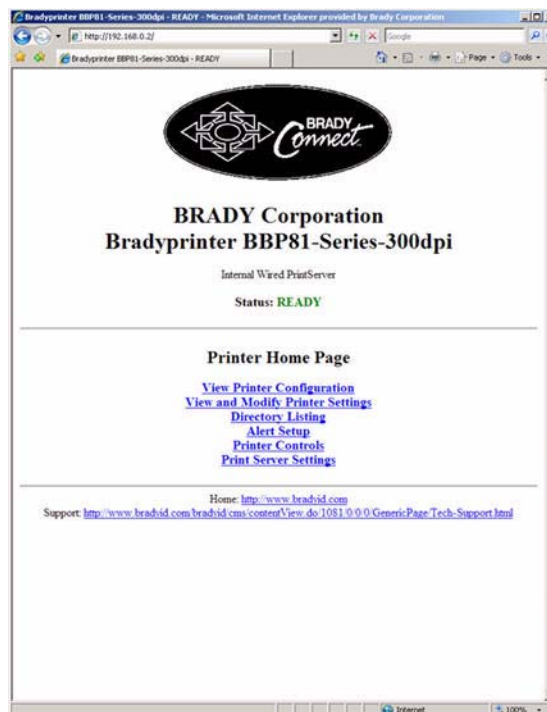
Establishing Email Alert Messaging

You can have multiple email addresses set up for routing different error messages, or split notifications between email and other network management tools.

To begin receiving email notification of errors, complete these steps:

1. Open a Web browser.
2. In the Address text-box, type in the printer's IP address.
The Printer Home Page opens.

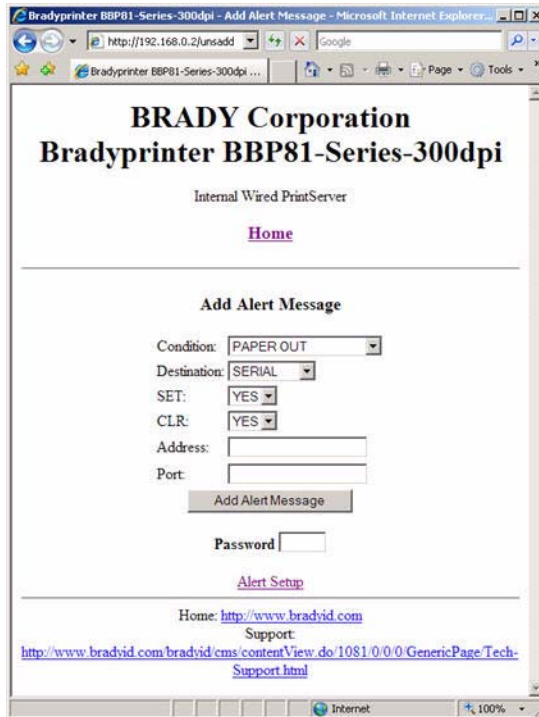
Figure 24 • Printer Home Page



3. From the *Printer Home Page*, click Alert Setup.
The Alert Setup page shows a list of message notifications and their respective destinations (if no notifications are listed).

4. To set up email notification, go to the Alert Setup page and click Add Alert Message.
The Add Alert Message page opens.

Figure 25 • Add Alert Message



5. Specify the condition to send over email, such as **HEAD ELEMENT BAD** or **PAPER OUT**.
6. Set Destination to Email.
7. In the SET drop-down box, select YES.
You will be notified via email whenever your specific condition is detected.
8. In the CLR drop-down box, select YES if you wish to be notified when the specific condition is cleared.

9. Enter a valid email address to send the alert messages to.



Example • admin@yourcompany.net (The Port field can be ignored for email setup.)



Important • A password is required. If you forget to enter the password, the alerts you just set are deleted.

10. Click Add Alert Message.

To receive email alert, you must give 10/100 Internal PS the IP address of your mail server that is running SMTP.

11. To save current settings, click Save Printer Setting.
12. Enter the password and click Save Current Configuration.



Important • The printer accepts only the last configuration made.

13. You can continue to add more Alerts, if finished:

- From the Printer Home Page, select PrintServer Settings > Network Communications Setup.
- Click SMTP Email Alerts.
- Specify your SMTP server address.



Note • The SMTP Server address might be referred to as Mail Server address.

When these steps are done, you can begin receiving email notification messages.

Checking 10/100 Internal PS Configuration Settings

This section provides steps on how to check the 10/100 Internal PS configuration settings using a browser.

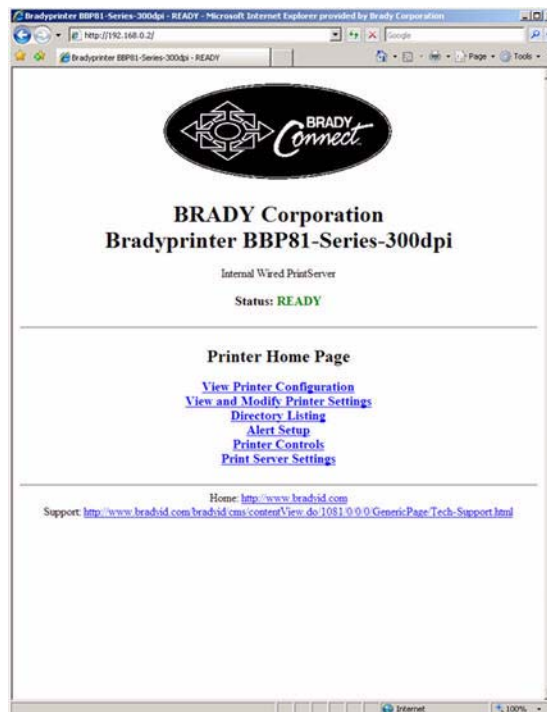
Browser

This section provides steps on how to check the 10/100 Internal PS configuration settings using its Web pages.

To access the 10/100 Internal PS settings, complete these steps:

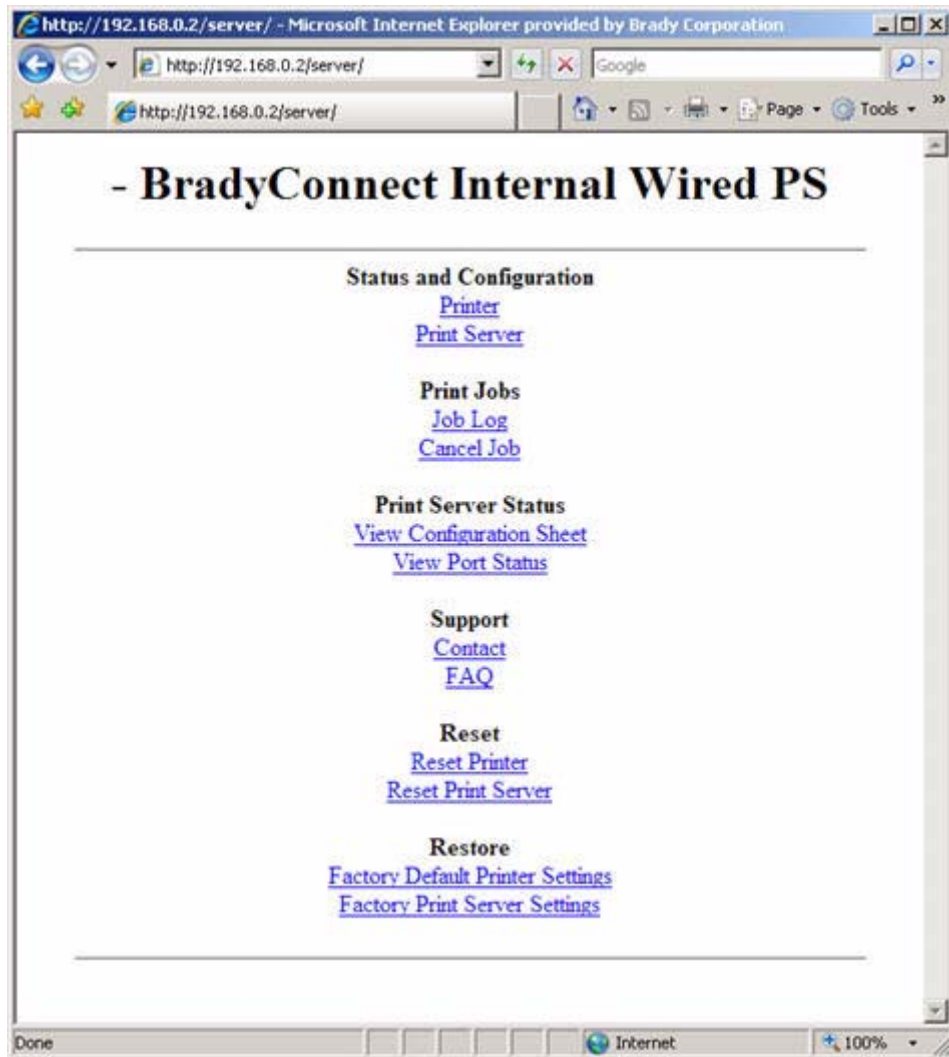
1. Open a Web browser.
2. In the Address text-box, type your printer's IP address, then press Enter.
Your browser page looks similar to [Figure 26](#).

Figure 26 • Browser View



3. From the Printer Home Page, click Print Server Settings.
The default User ID and password are required.
The Print Server Settings Page opens.

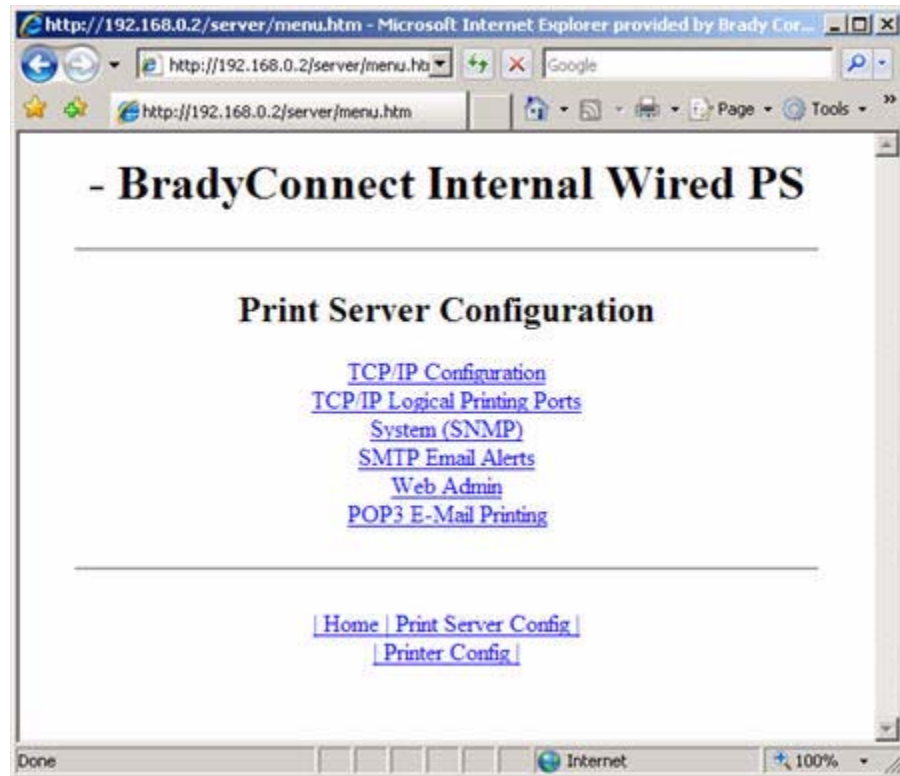
Figure 27 • Print Server Settings Page



To access the 10/100 Internal PS settings, complete these steps:

1. From the Printer Home page, click Print Server.
The Print Server Configuration page opens.

Figure 28 • Print Server Configuration



2. For details on the configuration choices, see *Configuring the Print Server* on page 75.

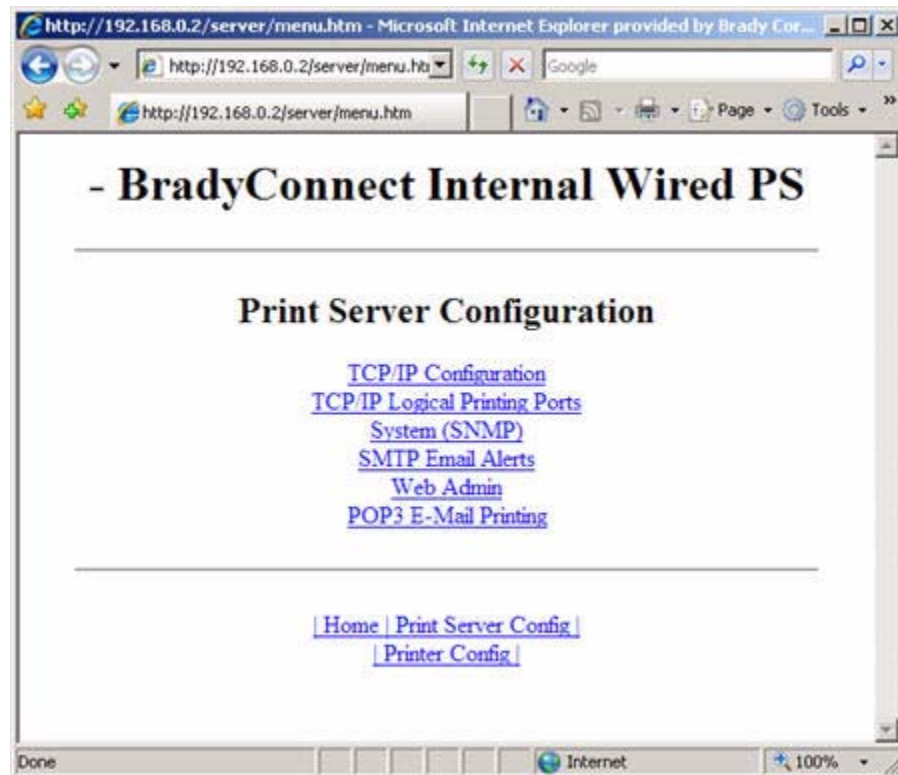
Configuring the Print Server

This section provides the steps to configure the 10/100 Internal PS using BradyConnect WebView and a web browser.

To change the TCP/IP Configuration, complete these steps:

1. From the Printer Home page, click Print Server Settings.
The Print Server Configuration page opens.
2. From the Print Server Configuration page, click Print Server.
The Print Server Configuration page opens.

Figure 29 • Print Server Configuration



3. From the Print Server Configuration page, you have a menu from which to choose. See [Table 4 on page 24](#) for more detailed information on these settings.
4. Select the appropriate link to make your change(s).

Sending Email to Your Brady Printer

To easily transfer instructions and data to your printer from a remote location, the 10/100 Internal PS allows you to send email to the printer. This is set up under the link POP3 Email Printing. You need to provide the address of the network POP3 server, a user name, and a password. With this option, you can create a text-based email containing ZPL II code and transfer it to the printer.



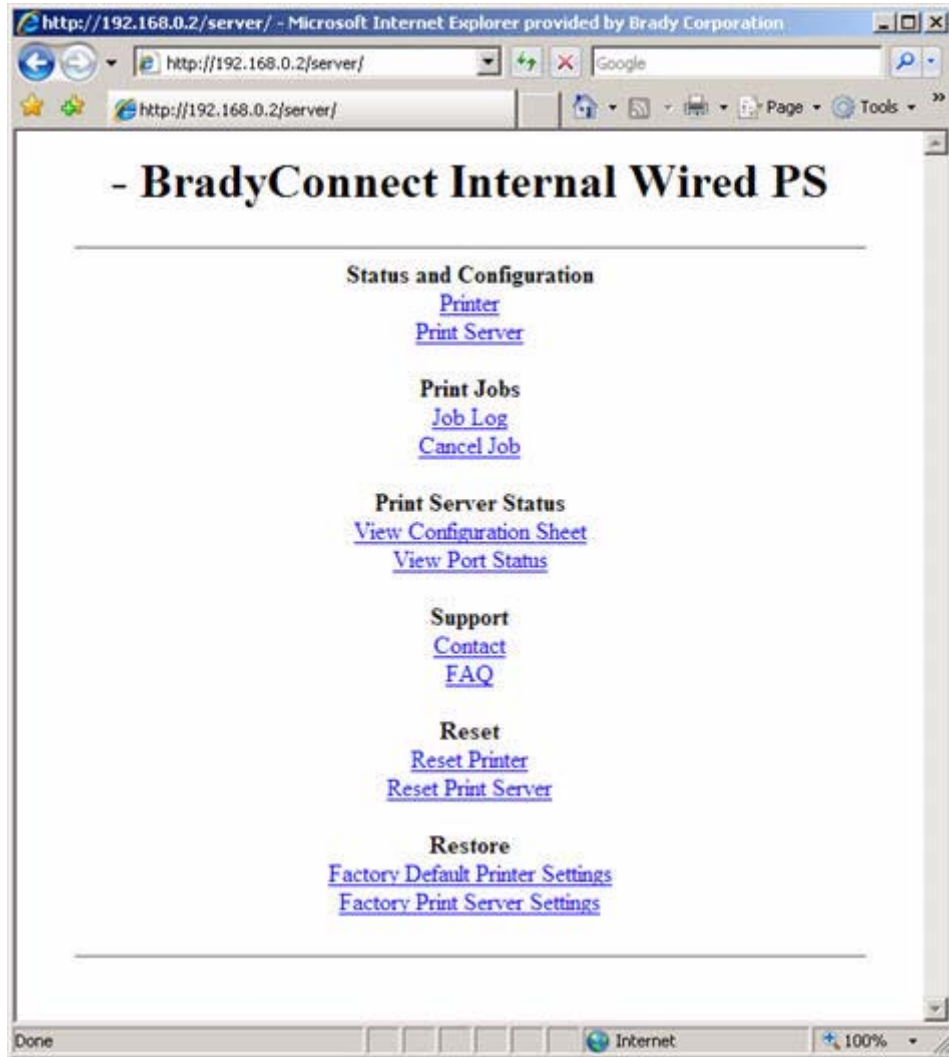
Note • Email attachments sent to the printer are not supported.

By using the proper ZPL II commands, files can be saved, loaded, printed, copied, and deleted, just as if the data were transferred from a serial or parallel port.

To access POP3, complete these steps:

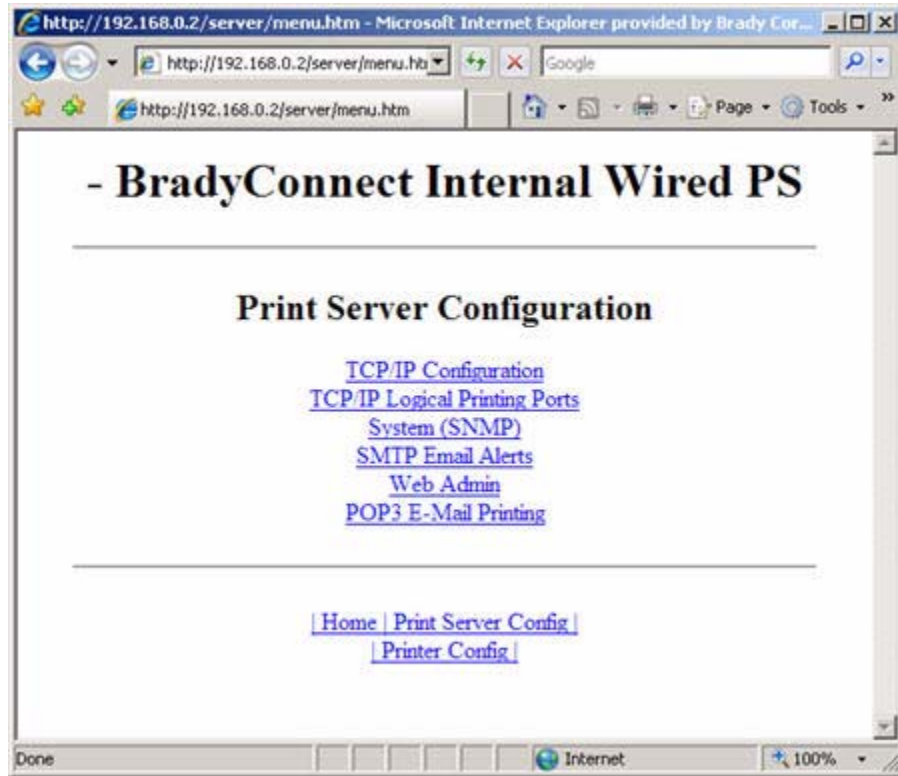
1. From the Printer Home page, click Print Server Settings.
The Print Server Settings Page opens.

Figure 30 • Print Server Settings Page



2. From the Print Server Settings Page, click Print Server.
The Print Server Configuration Page opens.

Figure 31 • Print Server Configuration



3. From the Print Server Configuration page, click POP3 E-mail Printing.
The POP3 Printing Configuration page opens.

Figure 32 • POP3 Printing Configuration



4. Make the necessary changes, and click Submit Changes.



Notes • _____

B



Hardware Troubleshooting

This appendix provides you with solutions to known issues.

Contents

Troubleshooting the 10/100 PS	82
Defaulting the 10/100 PS on the BBP81 (4") and BBP81 (6") Printers	82
10/100 Internal PS Network Status/Activity Indicator	83
Unable to Print	84

Troubleshooting the 10/100 PS

Defaulting the 10/100 PS on the BBP81 (4") and BBP81 (6") Printers

To default the 10/100 Internal PS to factory settings using the control panel, complete these steps:



Note • Only the BBP81 (4") and BBP81 (6") printers have a control panel.

1. From the control panel, press Setup/Exit two times.
2. Press Plus (+ key) five times.
The control panel will read **DEFAULT NET**.
3. Press Setup/Exit to save the change.
4. After the printer defaults all settings, the control panel will show **PRINTER READY**.

10/100 Internal PS Network Status/Activity Indicator

For the BBP81 (4") and BBP81 (6") printers

Alongside of the RJ45 connector, there is a single LED containing a red element and a green element. By turning on and off different combinations of these two LED elements, the LED indicates Ethernet links, activity, and speed.

LED State	Description
Off	No Ethernet link detected
Amber	10 Mbps link detected
Amber, blinking	10 Mbps link detected and Ethernet activity detected
Green	100 Mbps link detected
Green, blinking	100 Mbps link detected and Ethernet activity detected

Unable to Print

If you are having problems printing, verify that there is communication between the 10/100 Internal PS and the printer. Suggestions include the following:

- Ping the printer to determine the ability to communicate with the printer. See [Ping the Printer](#).
- Or open a Telnet session and send a ZPL command to print a configuration label. See [Telnet on page 85](#) for more information.
- Check obvious error conditions such as head open, out of media, out of ribbon, etc.
- If problems persist, contact Technical Support.

Ping the Printer

To ping the printer, complete these steps:

1. Open a DOS window.
To open a DOS window, click on Start > Run.
2. In the Open text box, type: cmd
3. From the DOS prompt, type:
ping xxx.xxx.xxx.xxx
where xxx.xxx.xxx.xxx is the IP address of the print server
4. See [Figure 33](#). You see a reply from the print server indicating a connection.

Figure 33 • Example of a Successful Ping

```
C:\>ping 172.30.1.34

Pinging 172.30.1.34 with 32 bytes of data:

Reply from 172.30.1.34: bytes=32 time=8ms TTL=126
Reply from 172.30.1.34: bytes=32 time=25ms TTL=127
Reply from 172.30.1.34: bytes=32 time=6ms TTL=127
Reply from 172.30.1.34: bytes=32 time=23ms TTL=127

Ping statistics for 172.30.1.34:
    Packets: Sent = 4, Received = 4, Lost = 0 (0% loss),
    Approximate round trip times in milli-seconds:
        Minimum = 6ms, Maximum = 25ms, Average = 15ms
```

If the issue is a communication problem, you would have received an error message.

Telnet

Open a telnet session to send a ZPL command from a DOS prompt. This procedure can be used when running Vx.15.x or later firmware. In this example, a ZPL II command is used to cause a label to print.



Note • You do not need to open a telnet session if you pinged the printer using the previous procedure. The purpose of these two procedures is to identify whether your PC can communicate with your printer.

To open a telnet session on your PC, complete these steps:

1. Open a DOS window.
To open a DOS window, click on Start > Run.
2. In the Open text box, type: cmd
3. From the DOS prompt, type:

```
telnet xxx.xxx.xxx.xxx 9100
```

where xxx.xxx.xxx.xxx is the IP address of the print server.
This will connect your PC to the 10/100 Internal PS through the parallel port of the printer.
4. Enter ~WC.
This ZPL command will print a configuration label on your printer.
5. Click the **X** in the upper right-hand corner of the window to exit.

If the configuration label prints, the issue is not a communication problem between the printer, the print server, or the PC.



Notes • _____



Print Protocols

In this appendix, an exercise is provided to experiment with **File Transfer Protocol (FTP)** support.

Contents

FTP	88
-----------	----

FTP

Embedded within the 10/100 Internal PS is an FTP server application that processes file transfers from a host computer to the printer.

If the printer is on a network, label formats can be generated and data can be transferred without setting up a print queue.

To send information to the printer in a Windows environment, try this exercise:

1. In Notepad, generate the following ZPL II code:

```
^XA
^FO100,100
^CF0,55^FDBrady Corporation^FS
^XZ
```

2. Save the file with the name: c:\test.txt.
3. Open the MS-DOS Command Prompt and type:

```
ftp <IP of 10/100 PS>
```



Example • If the IP address of your 10/100 Internal PS device is 12.3.4.123, you would type:

```
ftp 12.3.4.123
```

This opens a session with the FTP server.



Note • The default user name is blank.

4. Type your user name and press Enter.
5. Type:

```
put c:\test.txt
```

This transfers test.txt to the printer, and the printer generates a label.

6. To terminate the FTP session, type:
- ```
quit
```





---

# Print Queues

This appendix provides information and instructions on configuring your print queue.

## Contents

|                                                                          |    |
|--------------------------------------------------------------------------|----|
| Berkeley Software Distribution (BSD)-Style Print Queue . . . . .         | 90 |
| Configuring the Print Queue . . . . .                                    | 90 |
| System V Queue Installation . . . . .                                    | 91 |
| Configuring Operating System V Queue for BradyConnect Printing . . . . . | 91 |
| Prerequisites . . . . .                                                  | 91 |
| Spool Print Job Configuration . . . . .                                  | 91 |

## Berkeley Software Distribution (BSD)-Style Print Queue

BSD is a version of the UNIX OS that includes TCP/IP.

### Configuring the Print Queue

For remote BSD-style LPD printing, add the 10/100 Internal PS as a remote printer in the `/etc/printcap` database to each host printing to the 10/100 Internal PS. You can add printcap options as needed. If you are unfamiliar with these options, consult the printer documentation.



**Important** • You must be logged in as `root`.

The entry looks similar to this:

```
local_print_queue_name|[printer_model_and_manufacturer]:\
:lp=:mx#0:rm=BradyConnect_name:\
:rp=remote_print_queue_name:\
:sd=path_to_spool_directory:lf=just log_file_name
```

`local_print_queue_name` — This defines the name of the printcap entry. It is used by the LPR/LPD utilities to specify which printcap entry is being referenced. Additional printcap entries can be added as needed for different queue types. Each entry must have a unique `local_print_queue_name` and a different spool directory to work properly. When you are ready to print, use the `local_print_queue_name` that matches the data type of the file to be printed.

`BradyConnect_name` — This is the name (alias) of the BradyConnect 10/100 Internal PS. This must be the same name as entered in the `/etc/hosts` file or your NIS or DNS system. An IP address may also be used here.

`remote_print_queue_name` — This entry determines the BradyConnect port where the print job will be printed and optionally specifies ASCII printing that must end for LFL.

`path_to_spool_directory` — This is the path to a directory where the print jobs will be spooled for this queue. You must create a unique spool directory for each printcap entry.

`log_file_name` — This is the path to a file where error information from the LPD will be logged.



**Example** • Your printcap entries might look similar to this:

```
Ascii_files|form.feed.Queue_on_Port_1:\
:lp=:mx#0:rm=pserver1:rp=MYQUEUELF1:\
:sd=/usr/spool/myqueuel1:\
:lf=/usr/spool/myqueuel1/queue.log
```



**Important** • Each printcap entry must have a different spool directory to work properly.

## System V Queue Installation

### Configuring Operating System V Queue for BradyConnect Printing

This section describes the configuration of the printing system on the UNIX operating system. For clarity and brevity, the following specific names are used to represent general devices or concepts.

`lj4` — The local queue name on the UNIX system to which you want 10/100 Internal PS print jobs directed.

`BBP81PRINTER` — The host name or IP address of the remote system that is the 10/100 Internal PS device. For example, to Telnet to the 10/100 Internal PS and invoke the 10/100 Internal PS configuration utility, you would enter:

```
Telnet BBP81PRINTER
```

A host name is not required for the 10/100 Internal PS — the IP address can be used.

`yourqueuename` — This is the name of the queue on the BradyConnect and must end with LF1.

### Prerequisites

Before you proceed, the following prerequisites must be met:

- The name `BBP81PRINTER` and the IP address assigned to the 10/100 Internal PS are in the `/etc/hosts` file on the UNIX system.
- The LPD must be running on the UNIX system.

### Spool Print Job Configuration

**To configure the UNIX machine so users can spool print jobs to the PCL print queue on the BradyConnect named `BBP81PRINTER`, complete these steps:**

1. Log in to the UNIX machine as root.

2. Type:

```
lpssystem -t bsd BBP81PRINTER
```

3. Type:

```
lpadmin -p lj4 -s BBP81PRINTER!yourqueuename - I any
```

4. Type:

```
accept lj4
```

5. Type:

```
enable lj4
```

6. Try printing by typing the command:

```
lp -d lj4 [filename]
```



**Notes •** \_\_\_\_\_

\_\_\_\_\_

\_\_\_\_\_

\_\_\_\_\_

\_\_\_\_\_

\_\_\_\_\_

\_\_\_\_\_

\_\_\_\_\_

\_\_\_\_\_

\_\_\_\_\_

\_\_\_\_\_

---

# Frequently Asked Questions

This appendix provides a group of frequently asked questions (FAQs) about 10/100 Internal PS.

## FAQs

**Can the BradyConnect 10/100 Internal PS option work on a computer network that is running both TCP/IP and IPX protocols simultaneously?** Yes. The BradyConnect 10/100 Internal PS runs all of its available protocols simultaneously. This means that the BradyConnect 10/100 Internal PS can run on mixed networks such as a network using Microsoft, and UNIX.



**Important** • The BradyConnect 10/100 Internal PS does not support IPX, but it can function on networks that use IPX protocols.

**Will the BradyConnect 10/100 Internal PS allow connectivity to anything other than a PC network?** Yes. The BradyConnect 10/100 Internal PS allows connectivity to systems such as IBM's AS400, provided that it is configured using TCP/IP.

**What if a print job makes it to the queue, but never leaves the queue? The label does not print.** These are the things to check:

- Confirm that the printer is turned on and receiving power.
- Confirm that the network cable is plugged in and that you can ping the printer.
- If that does not solve the issue, it is likely that there was a misconfiguration while creating the queue. The queue must be recreated verifying the following:
  - Confirm that you use the print server's valid IP address.
  - If you are using a UNIX or AS/400 host, there is an option for the remote queue name. There is only one valid response to use: PORTLF1.
  - If Windows does not have LPR installed, the above required option should be left blank.
  - See the documentation for other operating system specific queue creation.

**What are the minimum requirements to network a printer?**

- Cat-5 network cable with RJ45 connector
- 10/100 Internal PS
- Hub or Switch
  - If a hub or switch is NOT used, you need a cross-over cable.
- Workstation running a TCP stack with print services installed.

**What is the default User ID and password for the print server?**

- The User ID is **admin** and the password is **1234**.

**What ports are open on 10/100 Internal PS and related software?**

**TCP Ports:**

- 21 FTP
- 23 Telnet
- 80 HTTP Server
- 515 Printer port
- 9100 Raw socket connection

**UDP Ports:**

- 161 SNMP broadcast from 10/100 Internal PS
- 162 SNMP trap on BradyConnect Alert
- 4201 discovery destination on 10/100 Internal PS

**What are my network connectivity options based on when using a 10/100 Internal PS?**

It depends on your environment, but the print server accepts print jobs in any of the following ways:

- FTP — ZPL/EPL files can be sent to the printer as standard ASCII files via an FTP client.
- HTTP — Using the script option on the printers Directory web page, you can type ZPL into a specified location of the Web browser and send it to the printer.
- LPR/LPD — Sometimes referred to as queue-based printing. LPR/LPD is the standard in network printing. Most TCP/IP operating systems are compatible with this option.
- Raw socket connection — You can connect to the printer directly via the network, bypassing *everything in between*. This option is commonly used to integrate ZPL/EPL into existing programs, such as VB scripts.
- POP3 — With proper configuration, you can place valid label format instructions into the body of an email, and it will print. The print server periodically checks this email box at the specified intervals and prints the body of the message.

**IMPORTANT:** Attachments and subject lines are not supported.



**Notes •** \_\_\_\_\_

\_\_\_\_\_

\_\_\_\_\_

\_\_\_\_\_

\_\_\_\_\_

\_\_\_\_\_

\_\_\_\_\_

\_\_\_\_\_

\_\_\_\_\_

\_\_\_\_\_

\_\_\_\_\_





---

# Glossary

**10BaseT** A type of Ethernet that uses unshielded twisted pair cable.

**100BaseT** A type of Ethernet that can transmit 100Mb of data per second with a twisted-pair cable.

**ARP** The standard TCP/IP method for determining the actual network address of a device based on its IP address.

**ASCII** A standard for the binary representation of characters.

**BOOTP** BOOTP (Bootstrap Protocol) is a protocol that lets a network client configure automatically. It can automatically configure any of the following information: IP address, gateway, subnet, system name, name server, and more. It automatically assigns the necessary settings from a pool of pre-determined addresses for a certain duration of time. BOOTP is the basis for a more advanced network manager protocol, the DHCP (Dynamic Host Configuration Protocol).

**BradyConnect** Allows you to connect and control your bar code printers anywhere and anytime.

**BradyConnect 10/100 Print Server** An Ethernet connectivity solution.

**broadcast** In a network, a situation when all destinations on the network receive a given packet.

**client** A workstation or PC in a client/server environment.

**community** For SNMP, a relationship between an agent and a set of SNMP managers that defines security characteristics. The community concept is a local one, defined at the agent. Each community is given a unique community name.

**current mode (parallel port)** A mode that the printer and print server negotiate.

**DHCP (Dynamic Host Configuration Protocol)** DHCP is an alternative to another network IP management protocol, Bootstrap Protocol (BOOTP). Like BOOTP, DHCP can configure an IP address, gateway, subnet, system name, and name server. When speaking about the 10/100 Internal PS, BOOTP, and DHCP configure the same options.

**delete bytes** This number is used to remove characters from the beginning of every job sent to the logical printer. The value for delete bytes can range from 0 to 255.

**dynamic** A dynamic configuration, as the name implies, means that it changes. BOOTP and DHCP offer time-based leases for the configurations they assign. Their changes depend on the time-based lease, and how often the printer itself is offline and online again. A dynamic configuration can include BOOTP or DHCP.

**Ethernet** A widely used local area network system based on the IEEE 802.3 standard.

**firmware** Software routines that are stored in ROM (Read Only Memory). This is typically part of a device, such as a printer or 10/100 Internal PS.

**FTP** File Transfer Protocol, a TCP/IP-related protocol for transferring files between devices on a network.

**Flash memory** A type of memory that allows read-and-write operations, but permanently stores data when the power is turned off. Useful for storing firmware because it can be easily updated by downloading new code.

**gateway** A device that converts one higher-level network protocol to a different higher level protocol.

**gleaning** A temporary, local configuration option. Gleaning lets you add the address of the device you want to configure to your local workstation's ARP table. This configuration is not permanent and is valid only from the workstation from which you entered the ARP information. After the information is entered into the workstation's ARP table, the user follows up with a Telnet session to enter the information permanently.

**IP** Internet Protocol, a packet-based protocol used for delivering data across networks.

**IP address** A network address used by the TCP/IP protocol.

**JetAdmin** A Hewlett-Packard printer management program available for NetWare and TCP/IP.

**logical** Refers to conceptual rather than physical. For example, a computer might have a single physical connection to the network (an Ethernet adapter card), but could have logical connections to several other devices on the network.

**LPD** LPD stands for Line Printer Daemon; it is the part that receives and processes the request. A "daemon" is a server or agent.

**MAC Address** Media Access Control. Ethernet address that corresponds to the assigned IP address.

**name server** A workstation on a TCP/IP network that provides a list of all workstations on the network.

**node** A device connected to a network, such as a computer or print server.

**parallel port** A port on a device that sends information in groups of bits over multiple wires, one wire for each bit in a group.

**ping** A TCP/IP command that determines whether a device is accessible on the network.

**POP3** Post Office Protocol, the protocol used to retrieve email through a mail server.

**port** A physical connector, such as the parallel port, or a logical connection to a device.

**post-string** A string that is sent at the end of every job going to the logical printer. Maximum 64 characters long.

**pre-string** A string that is sent at the beginning of each job that goes to the logical printer. Max 64 characters long.

**print server** A device in a network that changes a network protocol into a printer protocol.

**protocol** A method of sending and receiving data between two or more workstations on a network, and ensuring that the data is received without errors.

**RARP** Reverse Arp, a standard TCP/IP method of determining a device's IP address based on its Ethernet address.

**raw TCP port** A type of TCP port in which data is passed unmodified to the receiving node.

**RJ45** A type of modular jack connector similar to a telephone connector with up to eight wires. Used for 10BaseT Ethernet connections and for serial port connections.

**serial port** On a printer or print server, a port that transfers data one bit at a time. Serial ports usually have either a 25-pin, 9-pin "D," or RJ-45 connector setting mode (parallel port).

A mode that the print server is set to for the highest level of parallel port communications.

**server** A device on a local area network that provides services to client computers on the network.

**SMTP** Simple Mail Transfer Protocol, a protocol used to send email messages through a mail server.

**SNMP** Simple Network Management Protocol, a protocol for monitoring and controlling devices on a network.

**spooling** In printing applications, spooling is the transfer of data to a temporary storage area on disk (the print queue) prior to printing. Spooling allows many jobs to be queued to a single printer.

**static** Refers to a static IP address. All information is provided by the network administrator.

**subnet mask** A TCP/IP method of dividing a network into several smaller subnetworks.

**TCP/IP** Transmission Control Protocol/Internet Protocol, the de facto standard for Internet communications that is widely used on local area networks.

**TCP Port** A method of accessing a TCP/IP service, where a device with a single IP address can have multiple TCP ports.

**Telnet** A TCP/IP protocol that allows two devices to communicate over a LAN.

**trap** An unsolicited message sent by an SNMP agent to an SNMP management station. It notifies the management station of some unusual event.

**UNIX** A general-purpose computer operating system used on many different kinds of computers.

**Windows 95 and Windows 98** Microsoft's PC operating systems that feature built-in peer-to-peer networking.

**Windows NT** Microsoft's multitasking operating system that can be used either as a client or as a server.

**Windows 2000** Microsoft's multitasking operating system that replaces Windows NT; can be used either as a client or as a server.

**Windows XP** Microsoft's multitasking operating system that replaces Windows 2000; can be used either as a client or as a server.

**ZPL II** Zebra Programming Language II is a powerful label-definition and printer-control language.

10/100 Internal PS  
settings, 74  
specifications, 17  
10/100 Internal PS settings  
how to access, 21

## A

activity indicators, 83  
address  
network configuration label, 36  
alert setup, 65  
alerts  
establishing e-mail messaging with WebView, 69  
setting with WebView, 66  
assigning an IP address, 40  
from printer LCD, 41  
using gleaning, 43  
using static route, 42  
with DHCP, 40  
without DHCP, 40

## B

browser support  
requirements, 15  
BSD-Style  
print configuration, 90

## C

changing  
TCP/IP settings, 59  
check 10/100 Internal PS configuration settings, 72

configuration label  
fields to know, 36  
how to print, 34  
configuration setting  
with a browser, 72  
contacts, 9  
customer service, 9

## D

default  
password, 20  
user ID, 20  
default 10/100 PS factory settings  
using control panel, 38  
with WebView, 39  
BBP81 (4") and BBP81 (6") printers, 38  
default gateway  
network configuration label, 36  
view through control panel, 37

## E

email messaging  
alerts with WebView, 69

## F

File Transfer Protocol, 88  
firmware  
requirements, 15  
FTP, 88

## G

gleaning, 43

**H**

hardware  
requirements, 15

**I**

IP address  
assigning in a non-Windows environment, 41  
assigning in telnet session, 42  
selecting method for obtaining, 37  
view through control panel, 37

**L**

LED  
activity indicators, 83  
network status, 83

**M**

MAC address  
network configuration label, 36

**N**

network configuration label  
address, 36  
default gateway, 36  
hardware address, 36  
MAC address, 36  
subnet mask, 36  
network status, 83

**O**

overview, 14  
overview illustration  
explanation, 14

**P**

password  
default, 20  
ping the printer  
troubleshooting, 84  
prerequisites  
System V, 91  
primary network  
setting, 57  
print configuration  
BSD-Style, 90  
System V, 91

print network configuration label, 34  
using control panel, 37  
print problems  
troubleshooting, 84  
printing  
configuration label, 34  
protocols, 15  
PS parameters  
view using control panel, 37

**R**

related documents, 12  
requirements  
browser support, 15  
firmware, 15  
hardware, 15  
resetting to factory defaults  
troubleshooting printers, 82

**S**

sales, 9  
setting  
primary network, 57  
TCP/IP settings, 59  
specifications, 17  
static route, 42  
subnet mask  
network configuration label, 36  
view through control panel, 37  
System V  
prerequisites, 91  
UNIX configuration, 91

**T**

TCP/IP settings  
changing, 59  
technical support, 9  
telnet  
troubleshooting, 85  
troubleshooting  
resetting 10/100 PS to factory defaults for BBP81  
(4") and BBP81 (6") printers, 82  
unable to print, 84

**U**

unable to print  
troubleshooting, 84  
user ID  
default, 20

**V**

- view using control panel
  - PS parameters, 37

**W**

- WebView, 46
  - advanced setup, 56
  - calibration, 55
  - default 10/100 PS factory settings, 39
  - directory listing, 64
  - general setup, 53
  - home page, 46, 53
  - how to open, 47
  - media setup, 55
  - network configuration, 54
  - print listings on label, 54
  - print server settings, 50
  - printer configuration, 47
  - printer controls, 63
  - serial communications setup, 53
  - view and modify printer settings, 51
  - ZPL control, 56

This page intentionally left blank.







**Brady Worldwide Inc.**

6555 West Good Hope Road  
Milwaukee, WI 53223 U.S.A.  
Telephone: 414-358-6600 USA Domestic  
Fax: 414-438-6958

**Websites**

**USA:** [www.bradyid.com](http://www.bradyid.com).  
**Canada:** [www.bradycanada.com](http://www.bradycanada.com)  
**Mexico:** [www.bradylatinamerica.com](http://www.bradylatinamerica.com)  
**Asia:** [www.bradycorp.com](http://www.bradycorp.com)  
**Europe:** [www.bradyeurope.com](http://www.bradyeurope.com)

Part Number: Y885775

© 2008 Brady Worldwide Inc.

## Free Manuals Download Website

<http://myh66.com>

<http://usermanuals.us>

<http://www.somanuals.com>

<http://www.4manuals.cc>

<http://www.manual-lib.com>

<http://www.404manual.com>

<http://www.luxmanual.com>

<http://aubethermostatmanual.com>

Golf course search by state

<http://golfingnear.com>

Email search by domain

<http://emailbydomain.com>

Auto manuals search

<http://auto.somanuals.com>

TV manuals search

<http://tv.somanuals.com>