

# Gillette®

powered by

# BRAUN

Prosonic™

760 cc



Type 5673



### 博朗咨询电话

免费顾客咨询热线: **800-820-1357**

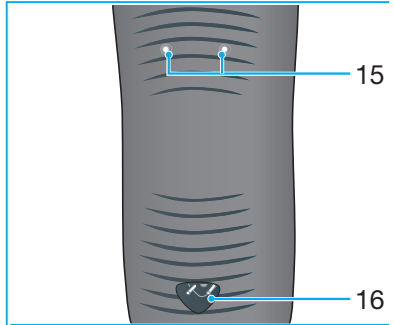
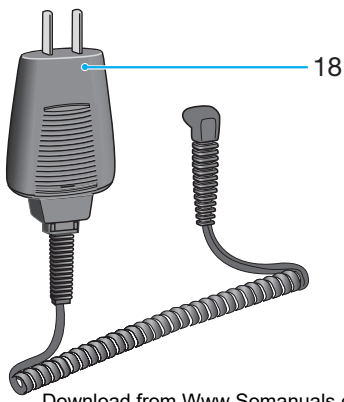
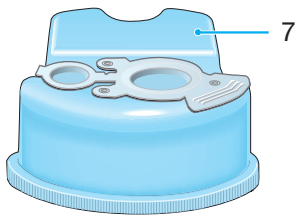
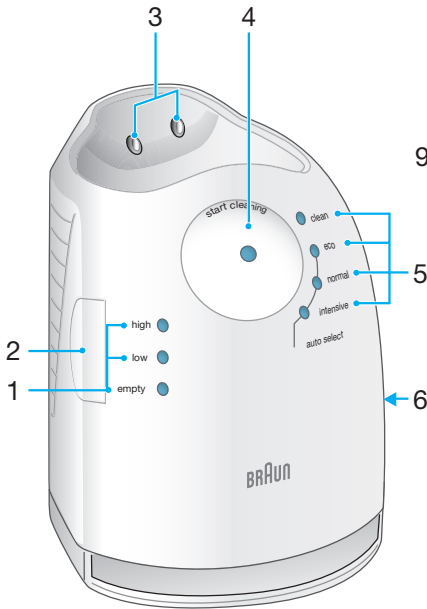
手机用户免费咨询热线: **400-820-1357**

(以上咨询电话仅限中国大陆地区使用)

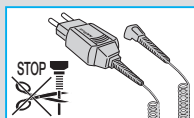
Braun GmbH  
Frankfurter Straße 145  
61476 Kronberg / Germany

5-673-363/00/IV-07/M  
China/GB

Download from [Www.Somanuals.com](http://www.Somanuals.com). All Manuals Search And Download.

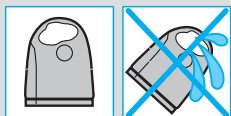


本产品设计优异、功能完善、质量可靠、满足高标准要求。希望您对新款吉列博朗剃须刀感到满意。



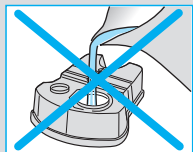
### 注意

本剃须刀配有集成化低压电源转换器。切勿更换或改装其中的任何部件，否则有触电危险。



为避免清洁剂漏洒，请务必将自动清洁/充电器置放于平整、稳定处。切勿倾斜、晃动或在安装清洁剂盒后运输。请勿将博朗自动清洁/充电器置放于玻璃制成的密封小柜内，或置放于光滑或油漆的表面。

自动清洁/充电器内含有高度易燃液体，应当远离火源和放射源，避免阳光直射或燃着的香烟，防止儿童搬弄。



请勿自行填充清洁剂盒，应选用博朗原装清洁剂。

## 组件说明

### 自动清洁/充电器

- ① 清洁液容量显示面板
- ② 清洁剂更换按钮
- ③ 清洁/充电器—剃须刀接口
- ④ 启动清洁按钮
- ⑤ 清洁程序指示灯
- ⑥ 清洁充电器电源插口
- ⑦ 清洁/充电器清洁液盒

### 剃须刀

- ⑧ 网膜和刀头组合
- ⑨ 网膜松解按钮
- ⑩ 刀头锁定开关
- ⑪ 弹出式长须修剪器
- ⑫ 启动开关
- ⑬ 复位按钮
- ⑭ 剃须刀显示面板
- ⑮ 剃须刀—清洁/充电器接口
- ⑯ 剃须刀电源插口
- ⑰ 便携盒
- ⑱ 专用电源线

## 剃须前

首次使用前应使用专用电源线⑩将剃须刀连接到电源插座，或按照下列步骤进行操作：

### 安装自动清洁/充电器

- 用专用电源线⑩将清洁/充电器⑥连接到电源插座。
- 按压更换按钮②打开清洁/充电器外罩。
- 将清洁剂盒⑦放置在水平稳定的平面上(如桌面)。
- 小心打开清洁剂盒盖。
- 将清洁剂盒平滑推入清洁充电器底座的最里面。
- 缓慢关上外罩并锁紧。

清洁液容量显示面板①会显示清洁剂盒中的容量：

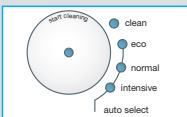
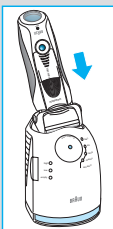
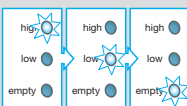
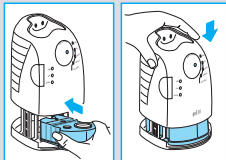
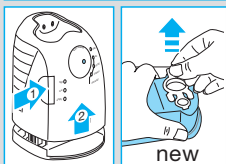
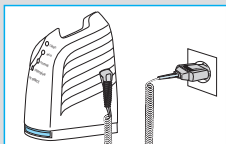
- 高《high》 表示可进行 30 次清洁  
低《low》 表示可进行 7 次清洁  
空《empty》 表示需要更换新盒

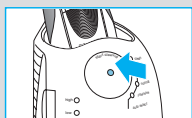
### 剃须刀充电与清洁

将剃须刀头向下插入清洁/充电器（背面的接口⑪对准清洁/充电器的接口③）

清洁/充电器此时根据需要进行充电，并分析剃须刀的卫生状况。清洁程序指示灯⑤之一会亮起：

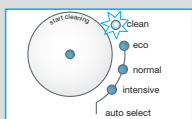
- 干净《clean》 表明剃须刀处于干净状态  
经济《eco》 表明需要简单清洗  
常规《normal》 表明需要常规清洗  
高强《intensive》 表明需要高强度清洁





清洁/充电器选择了所需程序以后，须按下启动清洁按钮④后才开始工作。为获得最佳剃须效果，建议每次剃须后都进行清洗。

清洁过程中对应的程序指示灯持续闪烁。每次清洁过程包含清洗液冲洗刀头、加热烘干等几次往复。基于不同的清洁程序，整个过程耗时32至43分钟。

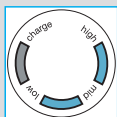


清洁程序不宜中断。烘干过程中刀头潮湿且发烫。清洁完毕蓝色《clean》指示灯会亮起，此时剃须刀洁净待用。

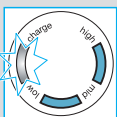
## 待机模式

充电或清洁程序结束 10 分钟后，清洁/充电器将切换到待机模式，清洁/充电器的指示灯熄灭。

## 剃须刀显示面板



剃须刀显示面板⑩显示电池的充电状态。在剃须刀充电或使用期间，对应的绿色电池片段指示灯将不停闪烁。当电量全满时，如果打开剃须刀或连接到电源插座，两个指示灯都会持续显亮。



启动剃须刀时若电量低于 20%，红色提示灯会亮起。此时剩余电量尚能进行 2 至 3 次剃须。

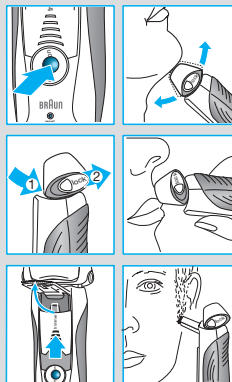
## 充电信息

- 电池充满后不接电源线可使用50分钟，具体长度视胡须浓密程度而定。
- 充电的最佳环境温度为5°C至35°C。本剃须刀不宜长时间置于超过50°C的环境中。

## 剃须

按压启动开关⑩操作剃须刀：

- 轮廓贴合刀头和浮动网膜自动顺应脸部轮廓。
- 可将刀头锁定开关⑩滑动到后方位置，将轮廓贴合刀头锁定在某个固定角度，便于在剃须难以接触的部位进行剃须，例如，鼻子下面。
- 如需修剪鬓角、小胡子和络腮胡，可以向上弹出长须修剪器⑪进行操作。



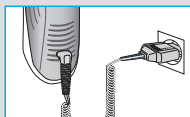
## 完美剃须的秘诀

为确保最佳剃须效果，特推荐以下剃须三步骤：

- 1 洗脸前剃须。
- 2 剃须刀与皮肤垂直（呈 $90^{\circ}$ ）。
- 3 拉伸脸部肌肤，逆胡须生长方向剃刮。

## 使用电源线进行剃须

若电量耗尽且没有时间置于清洁/充电器中充电，可以直接用专用电源线接电剃须。

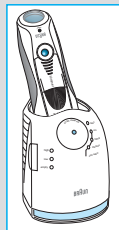


## 清洁

### 自动清洁

每次剃须后将剃须刀置于清洁/充电器中，按前述“剃须前”一节的介绍操作。清洁/充电器会自动进行充电和清洗。日常使用情况下，一盒清洁剂足够清洗约30次。

清洁剂中含有酒精，一旦开启即会缓慢挥发。如非每日使用，应当大约每8周更换一次。



清洁剂含有润滑油，可能于清洁后残留在刀网上。  
用布或软纸巾轻轻擦拭即可清除。

## 手动清洁

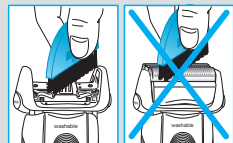
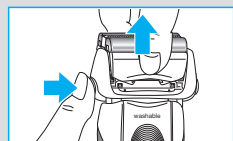
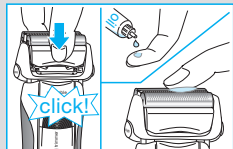
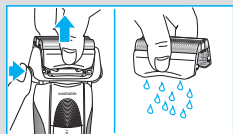
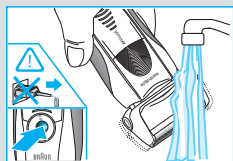


本机可以用自来水直接冲洗。

注意：用水清洗前，应先将手柄与电源分离。

用自来水清洁刀头是保持剃须刀清洁的替代方法、尤其是在旅游期间：

- 启动剃须刀(脱/断线工作)ⓐ，用流动温水清洗刀头，或用不含颗粒或研磨物质的天然香皂清洗。冲掉所有泡沫后让剃须刀继续运转几秒钟。
- 关闭剃须刀，按网膜松解按钮⑨卸下网膜和刀头组合ⓑ，将各零部件晾干。
- 若经常用水清洗剃须刀，应每周在网膜和刀头顶端滴少许机油。



可以使用配置的小毛刷清洁剃须刀：

- 关闭剃须刀，卸下网膜和刀头组合ⓑ，在水平桌面上轻轻磕出胡茬沫。用毛刷清洁轮廓贴合刀头内部区域，但不要用毛刷清洁网膜，以免损坏。

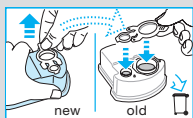
## 清洁外罩

经常用湿布清洁剃须刀清洁/充电器的外罩，尤其是插入剃须刀的部位。

## 替换清洁剂

按压更换按钮②打开外罩，稍等片刻后取拿出用过的清洁剂盒，避免滴洒。

用过的清洁剂已被污染，丢弃前务必用新清洁剂盒的盖子盖紧。





## 保持剃须刀最佳状态

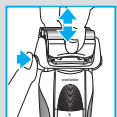
### 更换网膜和刀头组合/复位

为保持最佳剃须效果，在剃须刀显示屏⑬的更换提示灯亮起（约 18 个月后）或零件发生磨损时更换网膜和刀头组合⑧。

更换零件提示灯会连续七次在剃须时提醒更换零件，然后自动恢复原显示。

更换网膜和刀头组合后用圆珠笔按压复位按钮⑬ 3 秒钟，进行手动复位。

操作时更换提示灯闪烁，完成后熄灭。手动复位可随时进行。



### 附加设备

经销商或博朗服务中心可以提供以下部件：

- 网膜和刀头组合 70s
- 清洁剂盒、清洁/充电器 CCR



## 环保提示

本产品内含充电电池。为了保护环境，请勿在达到使用寿命后与普通生活垃圾一起丢弃。请在国内专设的适当收集点处置，或交给博朗售后服务中心统一回收处置。



清洁剂盒可随日常生活垃圾处置。

本说明可能在不作事先通知的情况下作出修改。

本产品符合欧洲 EMC 指令第 89/336/EEC 以及欧共体低压标准 2006/95/EC。



电气规格详见专用电源线标示。

## 保修

本产品保修期为购买之日起两年。保修期内凡因原材料或生产过程导致的各种瑕疵，本公司将视情况更换零件或整个产品。

本保修条款适用于所有博朗公司或其指定经销商销售本产品的国家。

### 上述保修承诺不适用于下述情形：

- 使用不当造成的产品损坏(包括但不限于使用错误的电流、电压, 将产品插入不合适的插座及其他人为损坏)。
- 网膜和刀头磨损。
- 对正常使用影响不大的瑕疵。
- 非家庭使用(如工业、商业用)引起的损坏。

一旦由未获授权人员修理、或换用非博朗原装零配件，本保修立即终止。

保修期内提供的服务不影响保修期的终止。保修期中替换的零件或整机的保修服务，与本产品的保修期同时终止。

本保修不影响法律明文规定的权利。

**如需保修或维修**，请携带整机和购货发票，与当地或就近的维修站联系。

**顾客免费热线：800-820-1357**

## 最新Braun售后服务部地址

城市	公司名称	地址	联系电话	
中区				
200085	上海	安帮北站天路电器安装维修服务社	上海市永兴路540号(靠近西藏北路)	63566755/56329466
200235	上海	乐帮新尊办公设备维修服务社	上海市漕溪路190号(靠近田林东路)	64688241
201100	上海	上海市闵行区博洁电器维修部	上海市闵行区莘建东路210号(莘庄地铁站-北广场)	64122533
310016	杭州	杭州中侨家电维修服务有限公司	杭州市采荷路10号	86047438
266071	青岛	青岛市市南区超维影视通讯技术服务部	青岛市市南区银川西路3号政泰商务楼202室	85977910
361003	厦门	厦门市思明区新鹭声电子技术服务部	厦门后埭溪路248号之6、7、8号	5170118/5170633
210003	南京	南京博伊华电子电器经营部	南京市中山北路223号陆龙电子城128包间	83420092
315040	宁波	宁波市江东明楼甬城家电维修部	宁波市江东惊驾路506号	87771344
315000	宁波	宁波海曙创佳数码家电维修部	宁波市苗圃路39弄50号(海关对面)	87134422
250100	济南	济南三能通信设备有限公司	济南市解放路30号国华经典3号楼1单元1104	88388197
230001	合肥	合肥数码技术服务部	合肥市庐江路54号	2655887/2654456
450000	郑州	郑州晟辉商贸有限公司	郑州市兴隆街8号郑州大酒店B座2306室	66770865
北区				
100078	北京	北京盛侨家用电器维修服务中心	北京市丰台区方庄芳群园2区6号楼金芳公寓304室	67698025/67630617
100035	北京	北京盛侨家用电器维修服务中心	北京市西城区西直门内大街南草厂街甲11号楼318室(长城商务写字楼)	66561976
050021	石家庄	河北省家电维修中心	石家庄市槐北路70号	86011793
300022	天津	天津市家电维修中心	天津市和平区滨江道109号	27120170
110011	沈阳	沈阳市沈河区东业电器维修中心	沈阳市沈河区承德路36-1	24870309
150010	哈尔滨	哈尔滨市道里区信誉进口家电维修部	哈尔滨市道里区地段街190号	84644674
116021	大连	大连市沙河口区现代电子技术服务部	大连市沙河口区西南路791号-7-3	86841988
130042	长春	吉林省百文礼品文具有限公司	长春市南关区大经路370号	88741702
710014	西安	陕西百利商贸有限公司	西安市丰禾路6号丰禾小区22号楼2楼	86220211
南区				
510600	广州	广州市金永利电器有限公司	广州市寺右新马路南二街24号	87386165(6)
518028	深圳	深圳市顺电连锁股份有限公司	深圳市华强北路上步工业区202栋2楼东	83286255
400014	重庆	重庆市渝中区中侨家用电器维修部	重庆市渝中区中山三路44号附2号	63527117
530001	南宁	南宁市南方家用电器维修中心	广西南宁市唐山路29号首层	3118895/3907787
650032	昆明	昆明松和电器有限公司	昆明市三合营路25号附2号	3645557
430015	武汉	武汉市江岸区兆利达家电维修中心	汉口解放大道1439号4栋3单元101室	85790611
610017	成都	成都市武侯区金维电子经营部	成都市大安东路57号3-6号	86944135
528200	佛山	佛山市禅城区得盛家用电器维修部	佛山市城门西商业街10号	83213535
350001	福州	福州福春电器维修服务服务有限公司	福州市塔头路328号顺意园一楼店面(福州锅炉厂对面)	87582122
325000	温州	温州市声像技术服务公司	温州市马鞍池东路45-47号	88850706

上海涵思贸易有限公司可办理零件及产品邮购

E-mail: shanghaihansi@163.com

电话: (021)64606449

邮编: 201100

注: 如果当地无特约维修站, 请与就近的维修站联系

顾客咨询热线: 800-820-1357 / 400-820-1357(手机用户)

**BRAUN**  
德国博朗

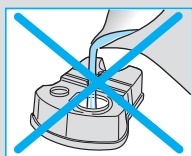
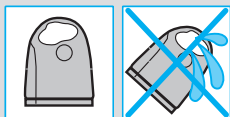
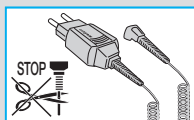
博朗(上海)国际贸易有限公司

中国上海浦东三林路550号

邮编: 200124

上述维修站更新于2007年4月

如有变更, 恕不另行通知



Our products are designed to meet the highest standards of quality, functionality and design. We hope you enjoy your new Gillette shaver powered by Braun.

## Warning

Your shaving system is provided with a special cord set, which has an integrated Safety Extra Low Voltage power supply. Do not exchange or tamper with any part of it, otherwise there is risk of an electric shock.

To prevent the cleaning fluid from leaking, ensure that the Clean&Renew station is placed on a flat surface. When a cleaning cartridge is installed, do not tip, move suddenly or transport the station in any way as cleaning fluid might spill out of the cartridge. Do not place the station inside a mirror cabinet, nor place it on a polished or lacquered surface.

The cleaning cartridge contains a highly flammable liquid so keep it away from sources of ignition. Do not expose to direct sunlight and cigarette smoking nor store it over a radiator. Keep it out of reach of children.

Do not refill the cartridge and use only original Braun refill cartridges.

## Description

### Clean&Renew station

- ① Cleaning fluid display
- ② Lift button for cartridge exchange
- ③ Station-to-shaver contacts
- ④ «start cleaning» button
- ⑤ Cleaning program diodes
- ⑥ Station power socket
- ⑦ Cleaning cartridge

### Shaver

- ⑧ Foil & Cutter cassette
- ⑨ Cassette release button
- ⑩ Shaver head «lock» switch
- ⑪ Pop-out long hair trimmer
- ⑫ On/off switch
- ⑬ Reset button
- ⑭ Shaver display
- ⑮ Shaver-to-station contacts
- ⑯ Shaver power socket
- ⑰ Travel case
- ⑱ Special cord set

## Before shaving

Prior to first use you must connect the shaver to an electrical outlet using the special cord set <sup>(18)</sup> or alternatively proceed as below:

### Installing the Clean&Renew station

- Using the special cord set <sup>(18)</sup>, connect the station power socket <sup>(6)</sup> to an electrical outlet.
- Press the lift button <sup>(2)</sup> to open the housing.
- Hold the cleaning cartridge <sup>(7)</sup> down on a flat, stable surface (e.g. table).
- Carefully remove the lid from the cartridge.
- Slide the cartridge into the base of the station as far as it will go.
- Slowly close the housing by pushing it down until it locks.

The cleaning fluid display <sup>(1)</sup> will show how much fluid is in the cartridge:

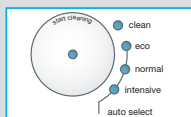
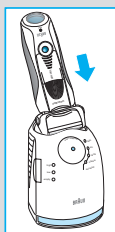
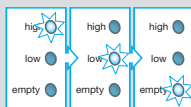
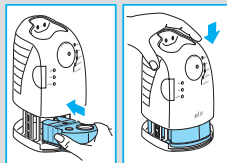
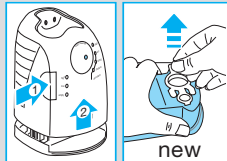
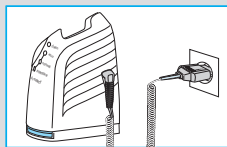
- «high» up to 30 cleaning cycles available
- «low» up to 7 cleaning cycles remaining
- «empty» new cartridge required

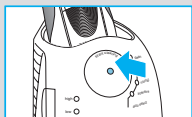
### Charging and cleaning the shaver

Insert the shaver head down into the cleaning station. (The contacts <sup>(15)</sup> on the back of the shaver will align with the contacts <sup>(3)</sup> in the cleaning station).

If required, the Clean&Renew station will now charge the shaver. The hygiene status of the shaver will also be analyzed and one of the following cleaning program diodes <sup>(5)</sup> will light up:

- «clean» shaver is clean
- «eco» short economical cleaning required
- «normal» normal level of cleaning required
- «intensive» high intensive cleaning required

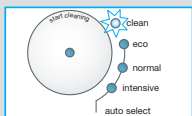




If the station selects one of the required cleaning programs, it will not start unless you press the «start cleaning» button ④. **For best shaving results, we recommend cleaning after each shave.**

Whilst cleaning is in progress, the respective cleaning program diode will blink. Each cleaning program consists of several cycles, where cleaning fluid is flushed through the shaver head and a heat drying process dries the shaver. Depending on the program selected the total cleaning time will range from 32 to 43 minutes.

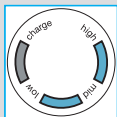
The cleaning programs should not be interrupted. Please note that whilst the shaver is drying, the shaving head may be hot and wet. When the program is finished, the blue «clean» diode will light up. Your shaver is now clean and ready for use.



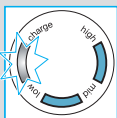
### Stand-by mode

10 minutes after completing the charging or cleaning session, the Clean&Renew station switches to the stand-by mode: The diodes of the Clean&Renew station and the shaver display turn off.

## Shaver display



The shaver display ⑭ shows the charge status of the battery. During charging or when using the shaver, the respective green battery segment will blink. When fully charged both charge segments will light up continuously, provided the shaver is switched on or connected to an electrical outlet.



The red low charge segment flashes when the battery capacity has dropped below 20%, provided the shaver is switched on. The remaining capacity will then be sufficient for 2 to 3 shaves.

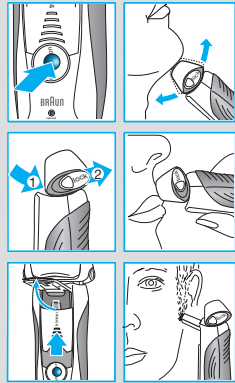
### Charging information

- A full charge provides up to 50 minutes of cordless shaving time. This may vary according to your beard growth.
- The best environmental temperature for charging is between 5 °C to 35 °C. Do not expose the shaver to temperatures higher than 50 °C for extended periods of time.

## Shaving

Press the on/off switch ⑫ to operate the shaver:

- The pivoting shaver head and floating foils automatically adjust to every contour of your face.
- To shave hard to reach areas (e.g. under the nose) slide the shaver head «lock» switch to the back position to lock the pivoting head at an angle.
- To trim sideburns, moustache or beard, slide the pop-out long hair trimmer ⑪ upwards.



### Tips for the perfect shave

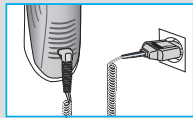
For best shaving results, we recommend you follow 3 simple steps:

1. Always shave before washing your face.
2. At all times, hold the shaver at right angles (90°) to your skin.
3. Stretch your skin and shave against the direction of your beard growth.



### Shaving with the cord

If the shaver has run out of power (discharged), and you do not have the time to recharge it in the Clean&Renew station, you may also shave with the shaver connected to an electrical outlet via the special cord set.



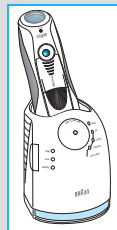
## Cleaning

### Automatic cleaning

After each shave, return the shaver to the Clean&Renew station and proceed as described above in the section «Before shaving».

All charging and cleaning needs are then automatically taken care of. With daily use, a cleaning cartridge should be sufficient for about 30 cleaning cycles.

The hygienic cleaning cartridge contains alcohol, which once opened will naturally evaporate slowly into the surrounding air. Each cartridge, if not used daily, should be replaced after approximately 8 weeks.



The cleaning cartridge also contains lubricates, which may leave residual marks on the outer foil frame after cleaning. However, these marks can be removed easily by wiping gently with a cloth or soft tissue paper.

### Manual cleaning



The shaver head is suitable for cleaning under running tap water.

**Warning:** Detach the shaver from the power supply before cleaning the shaver head in water.

Rinsing the shaver head under running water is an alternative way to keep the shaver clean, especially when travelling:

- Switch the shaver on (cordless) ⑫ and rinse the shaver head under hot running water. You may use liquid soap without abrasive substances. Rinse off all foam and let the shaver run for a few more seconds.
- Next, switch off the shaver, press the release button ⑨ to remove the foil and cutter cassette ⑧ and let it dry.
- If you regularly clean the shaver under water, then once a week apply a drop of light machine oil on top of the foil and cutter cassette.

Alternatively, you may clean the shaver using the brush provided:

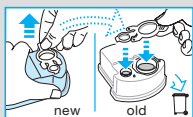
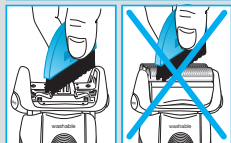
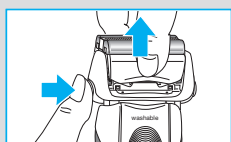
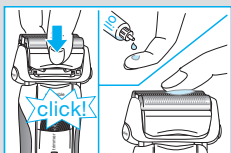
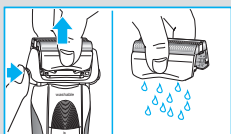
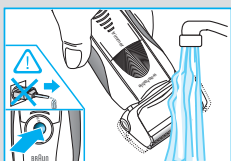
- Switch off the shaver. Remove the foil and cutter cassette ⑧ and tap it out on a flat surface. Using the brush, clean the inner area of the pivoting head. However, do not clean the cassette with the brush as this may damage it.

### Cleaning the housing

From time to time clean the housing of the shaver and the Clean&Renew station with a damp cloth, especially inside the cleaning chamber where the shaver rests.

### Replacing the cleaning cartridge

After having pressed the lift button ② to open the housing, wait for a few seconds before removing the used cartridge to avoid any dripping. Before discarding the used cartridge, make sure to close the openings using the lid of the new cartridge, since the used cartridge will contain contaminated cleaning solution.

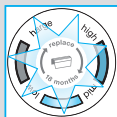




## Keeping your shaver in top shape

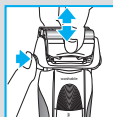
### Replacing the Foil & Cutter cassette/reset

To maintain 100% shaving performance, replace the foil and cutter cassette ⑧, when the replacement symbol lights up on the shaver display ⑭ (after about 18 months) or when cassette is worn.



The replacement symbol will remind you during the next 7 shaves to replace the foil and cutter cassette. Then the shaver will automatically reset the display.

After you have replaced the foil and cutter cassette, use a ball-pen to push the reset button ⑬ for at least 3 seconds to reset the counter. While doing so, the replacement light blinks and goes off when the reset is complete. The manual reset can be done at any time.



## Accessories

Available at your dealer or Braun Service Centres:

- **Foil & Cutter cassette 70S**
- **Cleaning cartridge Clean&Renew CCR**



## Environmental notice

This product contains rechargeable batteries. In the interest of protecting the environment, please do not dispose of the product in household waste at the end of its useful life. Disposal can take place at a Braun Service Centre or at appropriate collection points provided in your country.



The cleaning cartridge can be disposed with regular household waste.

Subject to change without notice.

This product conforms to the European Directives EMC 89/336/EEC and Low Voltage 2006/95/EC.



For electric specifications, see printing on the special cord set.

## Free Manuals Download Website

<http://myh66.com>

<http://usermanuals.us>

<http://www.somanuals.com>

<http://www.4manuals.cc>

<http://www.manual-lib.com>

<http://www.404manual.com>

<http://www.luxmanual.com>

<http://aubethermostatmanual.com>

Golf course search by state

<http://golfingnear.com>

Email search by domain

<http://emailbydomain.com>

Auto manuals search

<http://auto.somanuals.com>

TV manuals search

<http://tv.somanuals.com>