

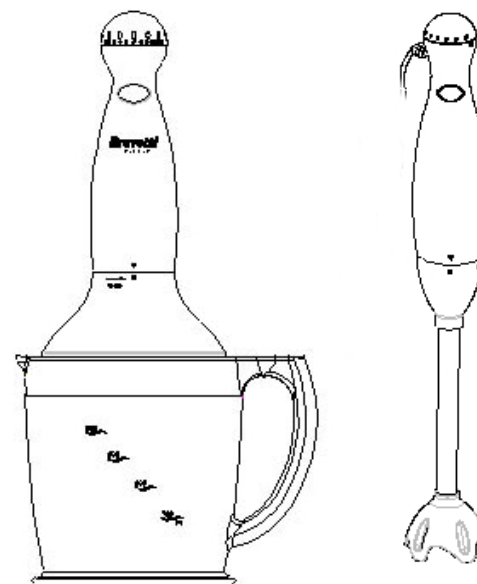
Bravetti

PLATINUM PRO

OWNER'S MANUAL

Model FP200
120V~, 60Hz., 350 Watts

DO IT ALL 3 STICK BLENDER/CHOPPER



EURO-PRO Operating LLC
Boston, MA, 02465
1 (800) 798-7398
www.euro-pro.com

IMPORTANT SAFETY INSTRUCTIONS

When using your **Bravetti Platinum Pro DO IT ALL 3 STICK BLENDER /CHOPPER**, basic safety precautions should always be observed, including the following:

1. Read all instructions before using the appliance.
2. To protect against risk of electrical shock, do not immerse cord, plug or unit (body of mixer) in water or other liquid.
3. Do not allow use by children. Care should be taken when appliance is used near children.
4. Unplug appliance from outlet when not in use, before putting on or taking off accessories, and before cleaning.
5. Avoid contact with moving parts at all times. Keep hands, hair, clothing, as well as spatulas and other utensils away from blender during operation to prevent risk of personal injury and/or damage to the appliance.
6. Do not operate any appliance with a damaged cord or plug or after the appliance malfunctions, or is dropped or damaged in any manner. Return appliance to **EURO-PRO** Operating LLC. for examination, repair or electric or mechanical adjustment.
7. The use of attachments not recommended or sold by **EURO-PRO** Operating LLC may cause fire, electrical shock or risk of personal injury.
8. Do not use outdoors. This unit is for household use **ONLY**.
9. Do not let cord hang over edge of table or counter or touch hot surfaces, including the stove.
10. To avoid injury by accidentally switching on the appliance when changing the chopper, or hand blender attachment, always unplug the appliance before assembling or disassembling. Remove hand blender and chopper attachments from motor power pack before cleaning.
11. **DO NOT USE THIS APPLIANCE ON A STOVE.** If you wish to use it in a saucepan while cooking, you must first remove the saucepan from the stove.
12. Do not use appliance for other than intended use.
13. Exercise extreme caution when blending hot liquids. Use a tall open container to allow steam to escape and avoid spillage or make small quantities at a time to reduce spillage.
14. To avoid burns, place the Stick Blender attachment first in the food to be beaten or chopped, then press the start button. Always release button before removing Stick Blender from the food.
15. Keep hands and utensils out of the container while blending to prevent the possibility of severe personal injury or damage to the unit. A spatula may be used but must be used only when the unit is not running.
16. **CAUTION!** Blades are sharp, handle carefully. When handling the chopper blade, always hold it by the plastic hub.
17. Make sure that the chopper cover is secured in place before operating appliance.
18. Do not place the beaker in a microwave oven.
19. Do not leave appliance unattended when plugged in.
20. Do not use appliance if any blades are damaged.
21. Immediately switch appliance OFF in the event that the appliance malfunctions during use.

SAVE THESE INSTRUCTIONS For Household Use Only

WARNING: To reduce the risk of electric shock, this appliance has a polarized plug (one blade is wider than the other). This plug will fit in a polarized outlet only one way. If the plug does not fit fully in the outlet, reverse the plug. If it still does not fit, contact a qualified electrician to install the proper outlet. Do not modify the plug in any way.

GETTING TO KNOW YOUR DO IT ALL 3 STICK BLENDER/CHOPPER



- | | |
|-----------------------------|----------------------------|
| 1. 350 Watt Power Pack | 9. Metal Stick Blender |
| 2. Chopper Gear Box | 10. Wall Bracket |
| 3. Frothier | 11. Mixer Gear Box |
| 4. Chopper Blade | 12. Dough Hooks (2) |
| 5. Blade Support | 13. Wire Beaters (2) |
| 6. Glass Beaker | 14. Wire Whisk |
| 7. Chopper Gear Box Adapter | 15. On/Off Switch |
| 8. Glass Beaker Cover | 16. Variable Speed Control |

Technical Specifications

Voltage: 120V~ 60Hz.
Power: 350 Watts

OPERATING INSTRUCTIONS

The **Bravetti Platinum Pro DO IT ALL 3 STICK BLENDER/CHOPPER** is an indispensable kitchen tool for blending, chopping, mixing or pureeing when preparing your favorite recipes. The interchangeable accessories and attachments that come with your unit are powered by a high efficiency 350 watt power pack. For best results, be sure to carefully read all the instructions contained in this book before using this appliance.

350 Watt Power Pack

The 350 Watt Power Pack operates on 120V~, 60Hz. electrical power. Never allow the power pack to become wet when plugged into an electrical outlet.

Warning: The power pack should never be immersed in water.

Caution: Make sure that the power pack is unplugged from power source before attaching or removing any accessory.

To use the power pack with any of the **Bravetti Platinum Pro Do It All Stick Blender/Chopper** accessories, place it on the attachment shaft aligning the arrows on the power pack and accessories to be used and turn it counterclockwise 90° until the arrow on the power pack aligns with the square. To remove the power pack, turn it clockwise.

To operate the Power Pack, press on the switch button located on the top of the unit. The Power Pack will stop operating when you remove your finger from the switch button.

Variable Speed Control

There is a variable speed control located at the top of the power pack. To vary the speed of your **Do It All Stick Blender/Chopper** rotate the round knob at the top of the power pack. From the low setting turn the variable speed control clockwise to increase speed and counterclockwise to reduce speed.

Stick Blender Attachment

Caution - Blade is sharp. Detach Stick Blender from power pack and wash with warm soapy water. Do not use any sharp pointed objects to clean residues from under the blade.

Food Chopper Attachment

Caution - Blades are sharp. Use extreme caution when handling the blade, always hold it by the plastic hub. Do not immerse the cover and gear box in water.

To store the unit, do not wrap cord around the power pack. Coil cord loosely and use a twist tie to secure it in large loops.

To clean the power pack, processor cover/gear box, wipe off with a clean, damp kitchen cloth. Towel dry.

Wall Bracket

A wall bracket is provided with your **Bravetti Platinum Pro Do It All 3 Stick Blender/Chopper**. Install the wall bracket in any convenient location using the wall anchors and screws (included). The Power Pack with or without the Stick Blender attachment may then be conveniently stored out of the way. (See illustration below.)

Important: Install wall mount bracket high enough above countertop to allow for clearance of power pack with stick blender attached.



Care and Cleanup

Always disconnect unit from power source before cleaning or changing accessories.

Caution: Never immerse the power pack, cord, or plug in water.

OPERATING INSTRUCTIONS cont.

Variable Speed Control:

Your **Bravetti Platinum Pro Do It All 3 Stick Blender/Chopper** has been designed with a variable speed control to provide more versatility in preparing delicate sauces or for chopping ice. To adjust speed, turn knob on top of Power Pack clockwise from low setting to increase speed and counterclockwise from high setting to decrease speed.

Assembling the Stick Blender:

Make sure that the unit is unplugged from power source before attaching or removing any of the Stick Blender attachments.

1. Line up arrow of Stick Blender attachment with arrow on power pack. Once fully inserted, rotate stick blender attachment clockwise 90° until arrow on power pack aligns with square on Stick Blender.

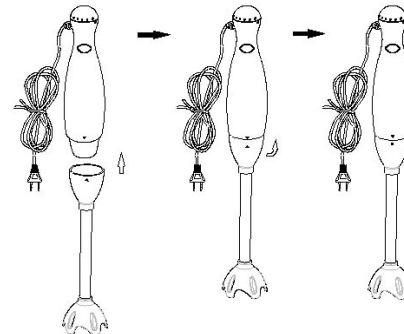
Warning: This appliance is designed for intermittent use. Maximum running time with the Stick Blender is 1 minute. After this time, allow the unit to cool.

2. Plug the cord into an electrical outlet.

Caution: To avoid splattering, place the Stick Blender first in the food to be beaten or chopped, then press the button. Always release the button before removing the Stick Blender from the food, especially when using the Stick Blender in hot liquids. Always hold the Stick Blender with your hand while processing. Never leave unit unattended.

Caution: Do not use the Stick Blender on the stove. If you want to use it in a saucepan while cooking, you must first remove saucepan from the stove.

3. Use the glass beaker with the Stick Blender or you can use another container. The glass beaker is intended only for processing small quantities of food with the Stick Blender.



4. Place the metal stick blender first into the food to be chopped or pureed before pressing the On/Off Switch to avoid splattering.
5. Use the variable speed control knob to select the desired speed.
6. Always release the On/Off switch before removing the stick blender from the food especially when using the stick blender in hot liquids. Always hold the unit with your hand while processing. Never leave the unit unattended or hook it on the wall bracket when it is plugged in.
7. To remove the stick blender attachment from the power pack, first unplug the unit from the power source and turn only the stick blender attachment 90° counterclockwise and pull it off.

Using the Stick Blender

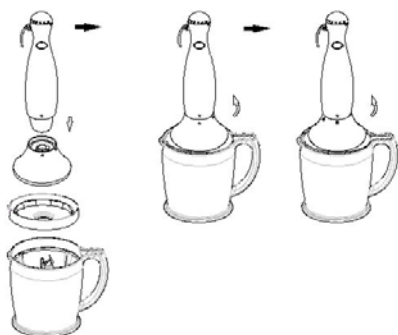
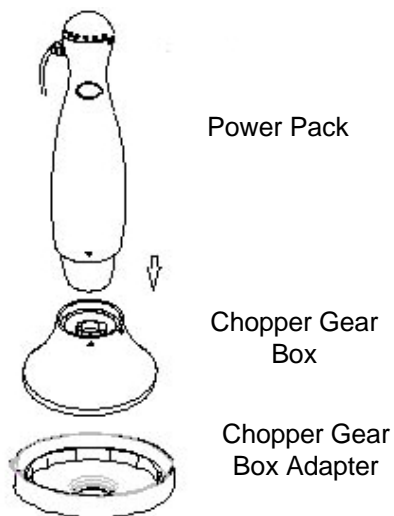
Pureeing soups, sauces, fruits and vegetables:

- * Fruits and vegetables should be peeled, cored and seeded.
- * Meats, poultry, and fish should have skin and bones removed.
- * Food should be cut up into pieces no larger than 3/4-inch.
- * Cook the food in liquid until very soft and tender.
- * Puree cooked food ONLY after allowing to cool down.
- * Food can also be pureed directly in the pot after being allowed to cool.
- * Place the Stick Blender in the center of the food in an upright position with the processor end resting directly on the bottom of the bowl or pot.
- * The processor end must always be immersed in the food. **DO NOT lift up and out of food while operating since the hot food will splatter and could cause burns.**
- * While holding the power pack and the Stick Blender in your hand, press and hold down on the switch with your index finger.
- * Release once the food has reached the desired consistency.
- * Do not operate continuously for more than 1 minute.
- * If pieces of unprocessed food remain, or if there are any lumps, continue pureeing the food, however, mash the food pieces or lumps by slightly raising and then lowering the Stick Blender over those pieces.

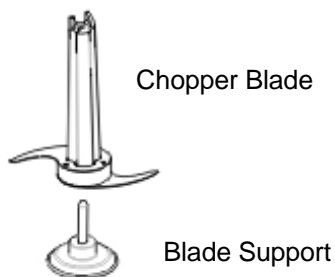
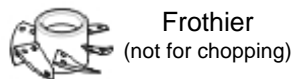
Food Chopper Assembly

Caution - Blades are sharp. Use extreme caution when handling the blade, always hold it by the plastic hub. Do not immerse the gear box in water.

1. Place blade support in the groove inside the glass beaker.
2. Insert the chopper blade onto the blade support.
3. Place the food to be chopped into the glass beaker.
4. Cover the glass beaker with the chopper gear box adapter.
5. Place the chopper gear box on top of the glass beaker.
6. Attach the power pack to the chopper gear box by rotating 90° counterclockwise and lining up the arrows.



7. If you wish to use the Frothier attachment to whip cream or milk, insert onto chopper blade as shown in illustration at right. The frothier attachment is **NOT** to be used for chopping.



Using the Food Chopper

- * Only process very soft, tender pieces of food.
- * Food pieces should not be larger than ¾-inch cubes.
- * Do not fill the processor bowls more than half way with very soft, tender foods like cooked apples or tomatoes. When pureeing foods like cooked vegetables, soft cheese, or cooked poultry, only add a few pieces at a time so that the unit does not jam. It is best to batch feed when using this appliance.
- * Avoid pureeing foods like citrus fruits or other foods that have a lot of fiber or hard, tough skin which can jam the appliance.
- * Should the unit jam during use and the blade stops turning, cease operation and **unplug the unit from the power source**. Disassemble the unit to remove any food that is jammed.

Caution: Never put your fingers or any utensils in the Stick Blender/Chopper during operation.

Warning: This appliance is designed for intermittent use. Maximum running time with the Chopper is 15 seconds. Allow unit to cool before resuming use. Best chopping results are achieved by using 2-3 second pulses.

Important: To mince meat, cut the meat into 1/2" cubes and do not mince more than 6 oz. at one time. Make sure that the meat, fish or poultry is fully defrosted and that all bones and gristle have been removed. Allow cooked food to cool before placing in the chopping bowl.

1. After assembling the unit, hold the power pack with your hand, press and hold down on the On/Off switch with your index finger.
2. To avoid the food from being over processed, use the pulse method of chopping and mincing.

Press on the switch for 2 to 3 seconds and then let go. Repeat this procedure until the food has reached the desired consistency.

3. Disconnect the unit from the power source. After the blade has fully stopped, remove the chopper gear box and the chopper gear box adapter. Using a rubber spatula, remove the chopped or minced food from the glass beaker.

Caution: Never put your fingers or any utensils in the Stick Blender/Chopper during operation.

Crushing Ice

Caution - Blades are sharp. Use extreme caution when handling the blade, always hold it by the plastic hub. Do **NOT** immerse Power Pack in water or any other liquid.

Ensure that the chopper gear box, chopper gear box adapter and blade assembly is well seated before turning the unit on to chop ice. **Hold appliance with BOTH hands when chopping ice.**

1. Assemble the chopper as you would for chopping (see page 5 for assembly instructions).
2. Place ice cubes to be crushed into bowl.
3. Hold the power pack firmly with one hand and pulse the On/Off switch with your index finger as you hold the glass beaker firmly with the other when you are crushing ice cubes.

Note: Recommended size of ice cubes is 1 1/4" x 1" x 3/4". Do not crush more than 6 oz. of ice cubes at a time.

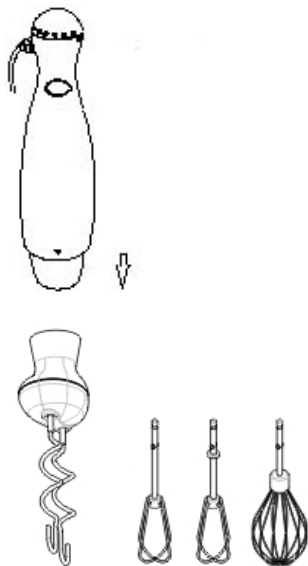
Warning: This appliance is intended for intermittent use. When crushing ice, use only bursts of 4 seconds each. Run time not to exceed 15 seconds before allowing unit to cool down.

Caution: Hold both the bowl/gear box and power pack when chopping ice. **Don't** hold appliance by the power pack only.

Multi-Mixer Assembly

Caution: Ensure that the appliance is unplugged from the electrical power source before changing attachments. Do not immerse the mixer gear box in water.

1. To attach the mixer gear box to the Power Pack, line up arrow on the Power Pack and Mixer Gear Box.
2. Push Power Pack onto Mixer Gear Box until seated.
3. While grasping Mixer Gear Box rotate it 90° clockwise until the arrow on the Power Pack aligns with the "Square" on the Mixer Gear Box.
4. To disassemble Mixer Gear Box and Power Pack rotate Mixer Gear Box 90° counterclockwise.



Attaching the Attachments to the Mixer Gear Box

Caution: Ensure that the appliance is unplugged from the electrical power source before changing attachments. Do not immerse the mixer gear box in water.

Select the desired attachment, either the Dough Hooks, Wire Beaters or Whisk and assemble to Mixer Gear Box as noted below:

A) Dough Hooks (2)

For use with light dough ONLY.

- Insert stem end of dough hooks (one at a time) into opening in base of Mixer Gear Box.
- Rotate slightly while pressing gently until dough hook "Clicks" into place.
- Repeat for second dough hook.
- Ensure that dough hooks are well seated in Mixer Gear Box.

B) Wire Beaters (2)

Follow same installation procedure as above.

C) Wire Whisk

This attachment is used for beating air into mixtures such as egg whites, yolks or creams..

- To install, place stem of Wire Whisk into either of the openings in the Mixer Gear Box.
- Rotate Wire Whisk while pushing gently until Wire Whisk "Clicks" into place.
- Ensure that Wire Whisk is well seated in Mixer Gear Box.

1. After attaching the desired accessory into the mixer gear box, plug the mixer into power source.
2. Hold the power pack with one hand and press and hold the On/Off switch with your index finger.
3. Ensure that there are no obstructions and that the accessories are moving freely in the mixing container.
4. When finished using the unit, unplug the unit before removing the accessories.

Care & Maintenance

Caution: Ensure that the appliance is unplugged from the electrical power source before changing or cleaning attachments. Do not immerse the mixer gear box in water.

1. The unit and the various attachments should be cleaned after each use.
2. All accessories and glass beaker can be cleaned with warm soapy water.
3. Use a damp cloth or sponge to clean the housing of the power pack. Do **NOT** immerse in water or any other liquid.

Caution: Use extreme caution when cleaning the chopper blade or metal stick blender because blades are **SHARP**.

Storing Your Unit

You may store your unit in the wall bracket provided. Do **NOT** wrap power cord around unit. Coil the cord in loose loops and tie with a tie wrap or twist tie.

It is recommended that the chopping blade be stored inside the glass beaker as blade is very sharp.

ONE (1) YEAR LIMITED WARRANTY

EURO-PRO Operating LLC warrants this product to be free from defects in material and workmanship for a period of one (1) year from the date of purchase when utilized for normal household use.

If your appliance fails to operate properly while in use under normal household conditions within the warranty period, return the complete appliance and accessories, freight prepaid. For Customer Service support, call 1 (800) 798-7398 or visit our website www.euro-pro.com.

If the appliance is found by **EURO-PRO** Operating LLC to be defective in material or workmanship, **EURO-PRO** Operating LLC will repair or replace it free of charge. Proof of purchase date and \$9.95 to cover the cost of return shipping and handling must be included.*

The liability of **EURO-PRO** Operating LLC is limited solely to the cost of the repair or replacement of the unit at our option. This warranty does not cover normal wear of parts and does not apply to any unit that has been tampered with or used for commercial purposes. This limited warranty does not cover damage caused by misuse, abuse, negligent handling or damage due to faulty packaging or mishandling in transit.

This warranty is extended to the original purchaser of the unit and excludes all other legal and/or conventional warranties. The responsibility of **EURO-PRO** Operating LLC if any, is limited to the specific obligations expressly assumed by it under the terms of the limited warranty. **In no event** is **EURO-PRO** Operating LLC liable for incidental or consequential damages of any nature whatsoever. Some states do not permit the exclusion or limitation of incidental or consequential damages, so the above may not apply to you.

This warranty gives you specific legal rights, and you may also have other rights which vary from state to state.

***Important: Carefully pack item to avoid damage in shipping. Be sure to include proof of purchase date and to attach tag to item before packing with your name, complete address and phone number with a note giving purchase information, model number and what you believe is the problem with item. We recommend you insure the package (as damage in shipping is not covered by your warranty). Mark the outside of your package "ATTENTION CUSTOMER SERVICE".**



OWNERSHIP REGISTRATION CARD FOR CANADIAN CONSUMERS ONLY

Please fill out and mail the product registration card within ten (10) days of purchase. The registration will enable us to contact you in the unlikely event of a product safety notification. By returning this card you acknowledge to have read and understood the instructions for use, and warnings set forth in the accompanying instructions.

RETURN TO **EURO-PRO** Operating LLC, 4400 Bois Franc, St-Laurent, QC, H4S 1A7

Model FP200

Appliance model

Date purchased

Name of store

Owner's name

Address

City

Prov

Postal Code

Free Manuals Download Website

<http://myh66.com>

<http://usermanuals.us>

<http://www.somanuals.com>

<http://www.4manuals.cc>

<http://www.manual-lib.com>

<http://www.404manual.com>

<http://www.luxmanual.com>

<http://aubethermostatmanual.com>

Golf course search by state

<http://golfingnear.com>

Email search by domain

<http://emailbydomain.com>

Auto manuals search

<http://auto.somanuals.com>

TV manuals search

<http://tv.somanuals.com>