



*ELITE Series*TM WATER PUMP

Illustrated Parts List

073003-1

Questions? Help is just a moment away!

Vous avez des questions? Vous n'avez pas besoin d'aller
loin pour trouver de l'aide!

Preguntas? La ayuda es justa un momento lejos!

Call: **Helpline**

Appelez: **Ligne d'assistance**

Llame: **Línea Directa**

1-800-743-4115 M-F 8-5 CT

BRIGGSandSTRATTON.COM

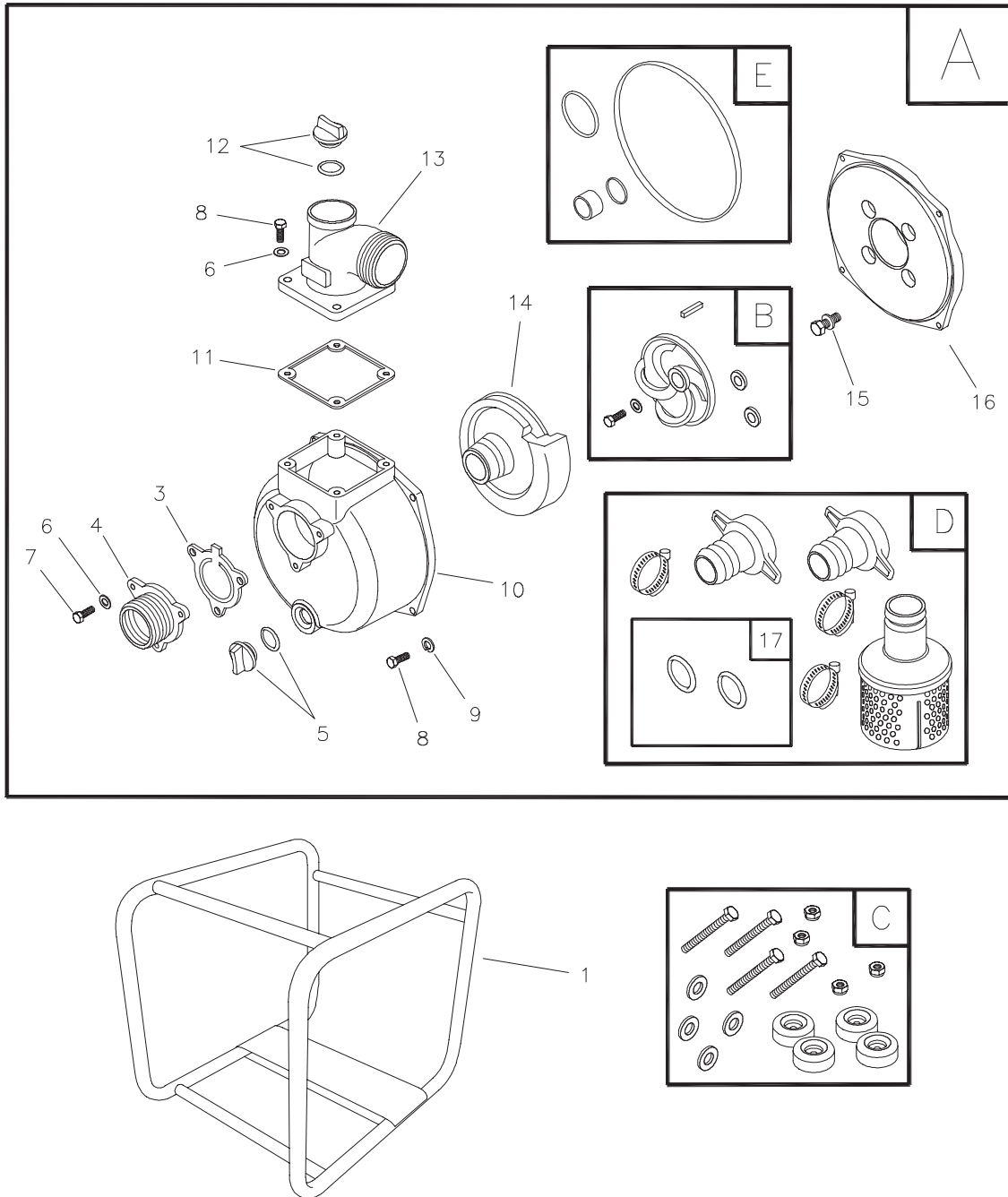


BRIGGS & STRATTON POWER PRODUCTS GROUP, LLC
JEFFERSON, WISCONSIN, U.S.A.

Manual No. 197988D Revision D (04/24/2007)

EXPLODED VIEW

EXPLODED VIEW – MAIN UNIT



Copyright © 2007 Briggs & Stratton Power Products Group, LLC. All rights reserved. No part of this material may be reproduced or transmitted in any form by any means without the express written permission of Briggs & Stratton Power Products Group, LLC.

PARTS LIST – MAIN UNIT

Item	Part #	Description
1	865159GS	CRADLE
3	197755GS	VALVE, Check
4	198678GS	FLANGE, Inlet, 3" NPT
5	198057GS	ASSY, Plug
6	*	WASHER, Flat, 3/8 M10
7	*	HHCS, M10 - 1.5 x 20
8	*	HHCS, M10 - 1.5 x 25
9	*	WASHER, Lock M10
10	197753GS	HOUSING, Pump
11	197759GS	GASKET, Out
12	198155GS	ASSY, Plug
13	198675GS	FLANGE, Out, 3" NPT
14	197748GS	VOLUTE, 3"
15	198048GS	ASSY, Fastener
16	197739GS	ADAPTER, Engine
17	197765GS	GASKET, 3"
A	199537GS	ASSY, Housing Pump
B	198156GS	KIT, Impeller
C	197887GS	KIT, Vibration Mount
D	200293GS	KIT, Coupler 3" NPT
E	198158GS	KIT, Seal

Parts Not Illustrated

197988GS	MANUAL, Operator's
100005	BOTTLE, Oil
198302GS	DECAL, Recoil
198301GS	DECAL, Air Cleaner
198296GS	DECAL, Fuel Tank
198303GS	DECAL, Caution
198305GS	LABEL, Warning
§	ENGINE

Engine Mounting Hardware Not Illustrated

*	HHCS, M8 - 1.25 X 30
*	WASHER, Flat, 5/16 - M8
*	NUT, Hex, M8 - 1.25
*	WASHER, Lock, 5/16 M8

* - Items without part numbers are common fasteners and can be found at your local hardware store.

§ - Contact Engine Manufacturer

Free Manuals Download Website

<http://myh66.com>

<http://usermanuals.us>

<http://www.somanuals.com>

<http://www.4manuals.cc>

<http://www.manual-lib.com>

<http://www.404manual.com>

<http://www.luxmanual.com>

<http://aubethermostatmanual.com>

Golf course search by state

<http://golfingnear.com>

Email search by domain

<http://emailbydomain.com>

Auto manuals search

<http://auto.somanuals.com>

TV manuals search

<http://tv.somanuals.com>