

AC0101



Illustrated Parts List

Model Series

AC0101

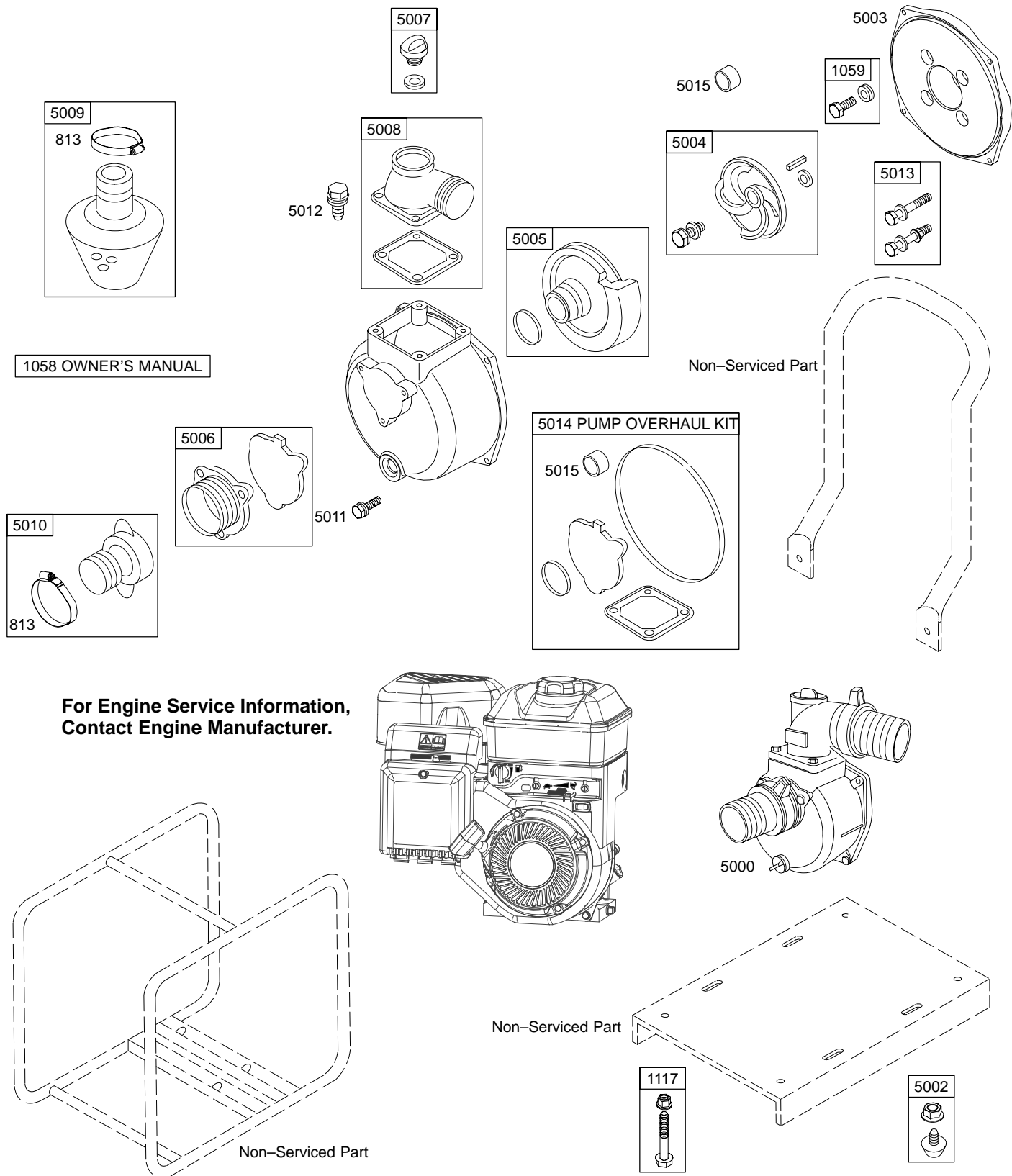
2" Water Pump



PRINTED IN U.S.A.

COPYRIGHT by BRIGGS & STRATTON CORPORATION
All rights reserved. No part of this material may be reproduced or transmitted,
in any form or by any means, electronic or mechanical, including photocopying,
recording or by any information storage and retrieval system, without permission
in writing from Briggs & Stratton Corporation.

AC0101



| REF. NO. | PART NO. | DESCRIPTION | REF. NO. | PART NO. | DESCRIPTION | REF. NO. | PART NO. | DESCRIPTION |
|----------|----------|--|----------|----------|---|----------|----------|-----------------------------|
| 813 | 865110 | Clamp | 5000 | 865085 | Pump-Water 2" Outlet | 5011 | 865104 | Screw |
| 1058 | MS5234 | Owner's Manual Used on Type No(s). 0001, 0002, 0003. | 5002 | 865089 | Foot-Rubber Used on Type No(s). 0001. | | | (Inlet Flange) |
| | | Note | 5003 | 865087 | Bracket-Flange | 5012 | 865106 | Screw |
| | MS5238 | Owner's Manual Used on Type No(s). 0005. | 5004 | 865090 | Impeller | | | (Outlet Flange) |
| | | | 5005 | 865092 | Volute | 5013 | 865108 | Kit-Screw/Nut |
| 1059 | 865112 | Kit-Screw/Washer (Flange to Crankcase Cover) | 5006 | 865094 | Flange-Inlet | | | (Pump Housing to Flange) |
| | | | 5007 | 865096 | Drain-Water | 5014 | 865114 | Kit-Pump Overhaul |
| 1117 | 865147 | Screw (Engine Mount) | 5008 | 865098 | Flange-Outlet | 5015 | 865148 | Seal-Impeller |
| | | | 5009 | 865100 | Strainer-Water | | | |
| | | | 5010 | 865102 | Coupling-Water | | | |

Free Manuals Download Website

<http://myh66.com>

<http://usermanuals.us>

<http://www.somanuals.com>

<http://www.4manuals.cc>

<http://www.manual-lib.com>

<http://www.404manual.com>

<http://www.luxmanual.com>

<http://aubethermostatmanual.com>

Golf course search by state

<http://golfingnear.com>

Email search by domain

<http://emailbydomain.com>

Auto manuals search

<http://auto.somanuals.com>

TV manuals search

<http://tv.somanuals.com>