

**AC0201**



# ***Illustrated Parts List***

***Model Series***

**AC0201**

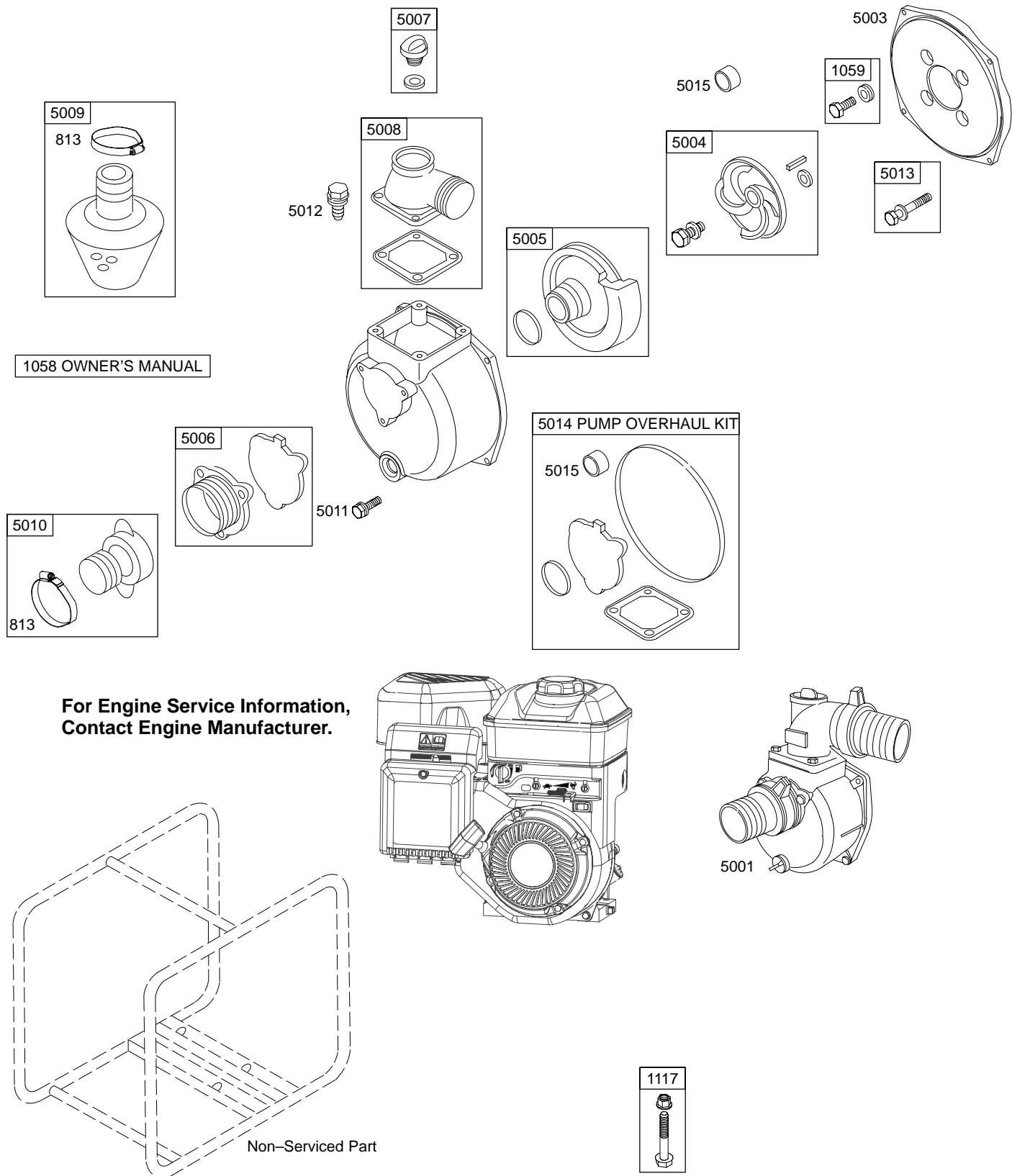
**3" Water Pump**



PRINTED IN U.S.A.

COPYRIGHT by BRIGGS & STRATTON CORPORATION  
All rights reserved. No part of this material may be reproduced or transmitted,  
in any form or by any means, electronic or mechanical, including photocopying,  
recording or by any information storage and retrieval system, without permission  
in writing from Briggs & Stratton Corporation.

# AC0201



REF. NO.	PART NO.	DESCRIPTION	REF. NO.	PART NO.	DESCRIPTION	REF. NO.	PART NO.	DESCRIPTION
813	865111	Clamp	5001	865086	Pump-Water 3" Outlet	5011	865105	Screw
1058	MS5234	Owner's Manual Used on Type No(s). 0001, 0002.	5003	865088	Bracket-Flange			(Inlet Flange)
		<b>Note</b>	5004	865091	Impeller	5012	865107	Screw
		MS5238 Owner's Manual	5005	865093	Volute			(Outlet Flange)
		Used on Type No(s). 0003.	5006	865095	Flange-Inlet	5013	865109	Kit-Screw/Nut
			5007	865097	Drain-Water			(Pump Housing to Flange)
1059	865113	Kit-Screw/Washer (Flange to Crankcase Cover)	5008	865099	Flange-Outlet	5014	865115	Kit-Pump Overhaul
1117	865147	Screw (Engine Mount)	5009	865101	Strainer-Water	5015	865148	Seal-Impeller
			5010	865103	Coupling-Water			

## Free Manuals Download Website

<http://myh66.com>

<http://usermanuals.us>

<http://www.somanuals.com>

<http://www.4manuals.cc>

<http://www.manual-lib.com>

<http://www.404manual.com>

<http://www.luxmanual.com>

<http://aubethermostatmanual.com>

Golf course search by state

<http://golfingnear.com>

Email search by domain

<http://emailbydomain.com>

Auto manuals search

<http://auto.somanuals.com>

TV manuals search

<http://tv.somanuals.com>