



Remote Printer Console User's Guide

Version 2

Trademarks

The Brother logo is a registered trademark of Brother Industries, Ltd.

JAVA JRE is a registered trademark of SUN MICROSYSTEMS.

Apple, the Apple Logo, Macintosh, AppleTalk and TrueType are registered trademarks of Apple Inc. in the United States and other countries.

Epson is a registered trademark and FX-80 and FX-850 are trademarks of Seiko Epson Corporation.

Hewlett Packard is a registered trademark and HP LaserJet 6P, 6L, 5P, 5L, 4, 4L 4P, III, IIIP, II, and IIP are trademarks of Hewlett-Packard Company.

IBM, IBM PC, and Proprinter are registered trademarks of International Business Machines Corporation.

Microsoft, MS-DOS and Windows are registered trademarks of Microsoft Corporation in the U.S. and other countries.

Windows Vista is either a registered trademark or trademark of Microsoft Corporation in the United States and/or other countries.

All other terms and brand and product names mentioned in this User's Guide are registered trademarks of their respective companies.

Compilation and Publication Notice

Under the supervision of Brother Industries Ltd., this manual has been compiled and published, covering the latest product's descriptions and specifications.

The contents of this manual and the specifications of this product are subject to change without notice.

Brother reserves the right to make changes without notice in the specifications and materials contained herein and shall not be responsible for any damages (including consequential) caused by reliance on the materials presented, including but not limited to typographical and other errors relating to the publication.

©2007 Brother Industries Ltd.

Specifications

Required software

Java Runtime Environment (JRE) 1.4.2 or greater

Brother printer driver for the model being managed

System requirements

Windows® 2000/XP/XP Professional x64 Edition or Windows Vista™,

Windows Server® 2003 / Windows Server® 2003 x64 Edition

Mac OS® X 10.2.4 or greater: 128 MB RAM (160 MB recommended)

Table of Contents

Specifications.....	ii
Required software	ii
System requirements.....	ii

1 Remote Printer Console for Windows® 1-1

How to install the Remote Printer Console software	1-1
How to use the Remote Printer Console software.....	1-1
What each button does.....	1-2
Print Settings button	1-2
Print Fonts button	1-2
User's Guide button.....	1-2
Default button	1-2
Send button	1-2
Remote Printer Console menus.....	1-2

2 Remote Printer Console for Macintosh® 2-1

How to install the Remote Printer Console software	2-1
How to use the Remote Printer Console software.....	2-2
BRSelectPrinter buttons	2-2
Printer window buttons	2-3
Remote Printer Console menus.....	2-4

3 Remote Printer Console Menu Table 3-1

Remote Printer Console menu table.....	3-1
--	-----

The Remote Printer Console is a software utility for changing printer settings independently of your software application. For example, you can change the printer margins, sleep mode, character set and other settings from the Remote Printer Console software. These settings are then remembered and used by the printer.

How to install the Remote Printer Console software

Double-click **setup.exe** in the **RPC** folder on the CD-ROM, and follow the instructions.

You must have Java Runtime Environment (JRE) installed to run Remote Printer Console. The latest version of JRE is available from the following URL: <http://java.sun.com/j2se/>



Note

- When the software is activated, the first screen will not always reflect the current printer settings. Follow the steps below to print the actual settings of the printer.
- If you are using an unsupported mode, you may not be able to change some of the settings.
- Some settings require a re-boot of the printer in order for the settings to be accepted.

How to use the Remote Printer Console software

- 1 From the **Start** button, select **All Programs > Brother Personal Utilities > Remote Printer Console > Remote Printer Console**.
- 2 The **printer** window appears.
- 3 Print the Printer Settings Page by clicking the **Print Settings** button.
- 4 Change the item or items that you wish to change.
- 5 Press the **Send** button.
- 6 Re-print the Printer Settings Page to check that the settings have changed.

What each button does

Print Settings button

The printer will print the current Printer Settings Page.

Print Fonts button

The printer will print out its font list.

User's Guide button

Remote Printer Console User's Guide (this document) will open if you click this button.

Default button

Settings in the tab you are currently looking at will be reset to their default settings.

Send button

Settings in the tab you are currently looking at will be sent to the printer.

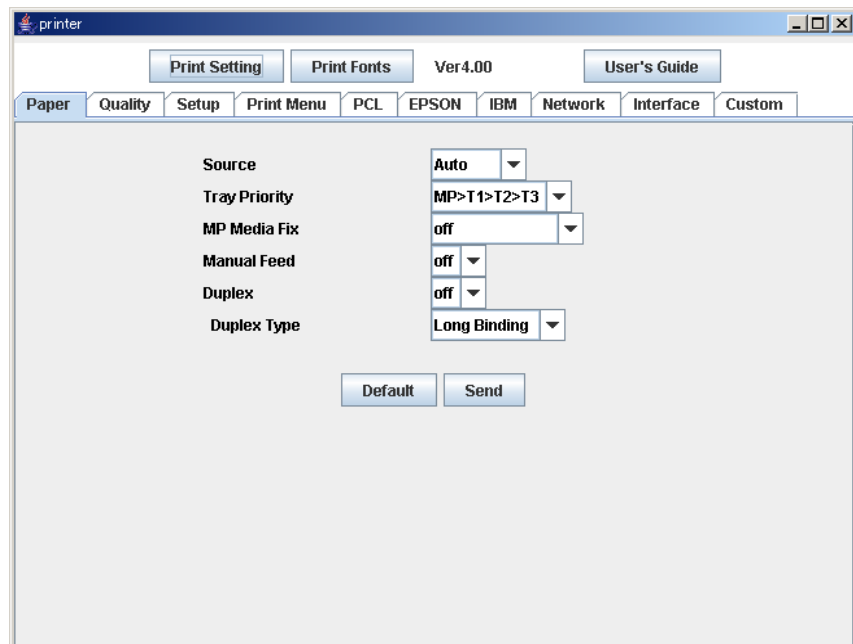
Remote Printer Console menus

There are ten main menus in the **printer** window. Click the menu tab for the setting you want to configure. For more information about the selections available in each menu, see *Remote Printer Console menu table* on page 3-1.

Note

Some functions in the menus are only available for some models.

- Paper
- Quality
- Setup
- Print Menu
- PCL
- EPSON
- IBM
- Network
- Interface
- Custom



The Remote Printer Console is a software utility for changing printer settings independently of your software application. For example, you can change the printer margins, sleep mode, character set and other settings from the Remote Printer Console software. These settings are then remembered and used by the printer.

How to install the Remote Printer Console software

Double-click **BrotherRPCforMac.pkg** in the RPC folder on the CD-ROM, and install the software following the instructions. After installation is done, an alias, called **RemotePrinterConsole**, will be created on your desktop.

You must have Java Runtime Environment (JRE) installed to run Remote Printer Console. The latest version of JRE is available from the following URL: <http://java.sun.com/j2se/>



Note

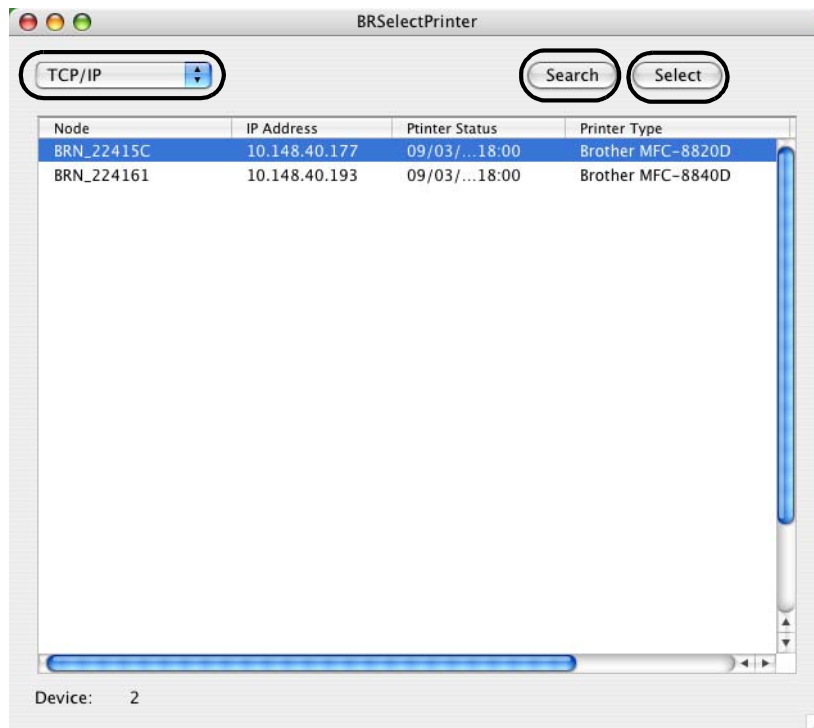
- When the software is activated, the first screen will not always reflect the current printer settings.
- This application can be used with network ready models that are printing using the TCP/IP and AppleTalk® protocol.
- If you are using an unsupported mode, you may not be able to change some of the settings.
- Some settings require a re-boot of the printer in order for the settings to be accepted.
- If you delete the alias **RemotePrinterConsole** on your desktop, use the **RemotePrinterConsole** in the **\Library\Printers\Brother\Utilities\RPCJ** folder.
- If you operate the files other than **RemotePrinterConsole** in the **\Library\Printers\Brother\Utilities\RPCJ** folder, the application will not work.

How to use the Remote Printer Console software

- 1 Double-click the **RemotePrinterConsole** on your desktop.
- 2 **BRSelectPrinter** screen appears. Select **TCP/IP**, and printer node names and other information will be shown in the box.

BRSelectPrinter buttons

- **Search** button:
Searches for printers automatically.
- **Select** button:
Opens the printer window of the printer you selected.



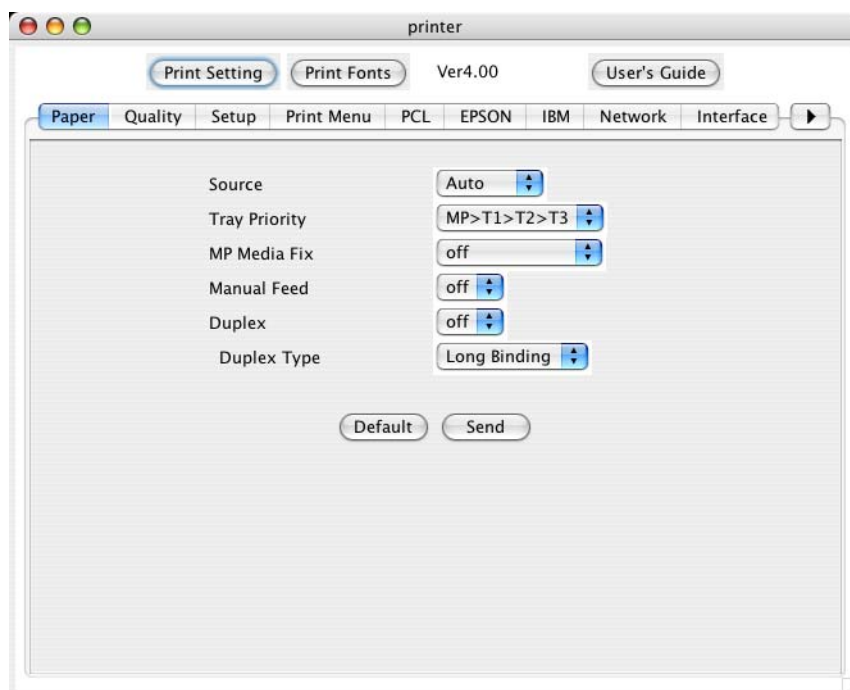
- 3 Highlight the printer you want to change the settings on and click the **Select** button. The **printer** window will appear.

Note

If you want to re-search for a printer, click the **Search** button.

Printer window buttons

- **Print Settings** button
The printer will print out the Printer settings Page.
- **Print Fonts** button
The printer will print out its font list.
- **User's Guide** button
Remote Printer Console User's Guide (this document) will open if you click this button.
- **Default** button
Settings in the tab you are currently looking at will be reset to their default
- **Send** button
Settings in the tab you are currently looking at will be sent to the printer.



- 4 Print out the Printer Settings Page by clicking the **Print Settings** button.
- 5 Change the item or items you want to change.
- 6 Click the **Send** button.
- 7 Reprint the Printer Settings Page to check the settings have changed.

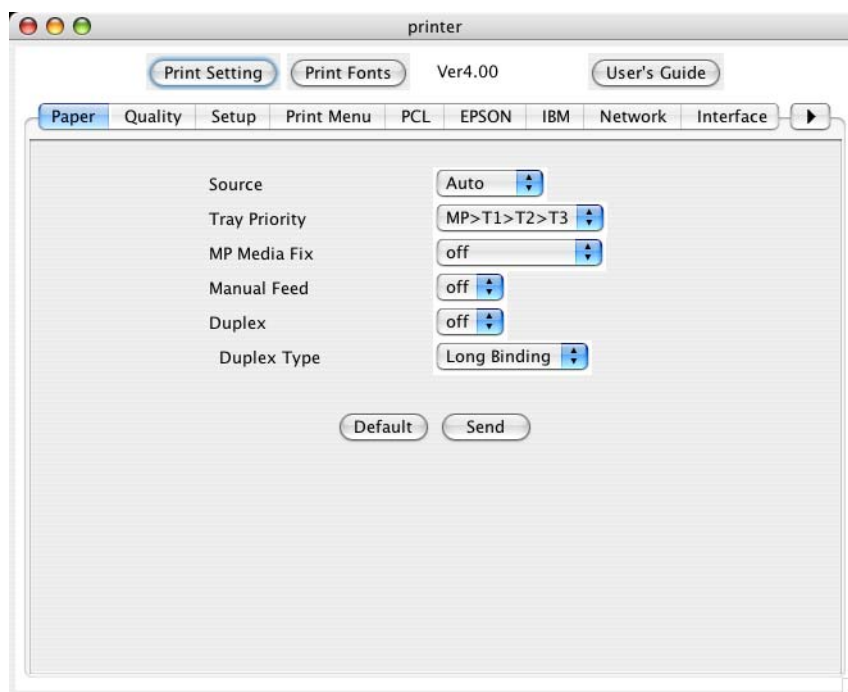
Remote Printer Console menus

There are ten main menus in the **printer** window. Click the menu tab for the setting you want to configure. For more information about the selections available in each menu, see *Remote Printer Console menu table* on page 3-1.

 **Note**

Some functions in the menus are only available for some models.

- Paper
- Quality
- Setup
- Print Menu
- PCL
- EPSON
- IBM
- Network
- Interface
- Custom



Remote Printer Console menu table



Note

The default settings are different depending on your model.

Main menu	Sub menu	Options	Descriptions
Paper	Source	Auto, MP Tray, Tray 1, Tray2, Tray 3	Selects which paper tray the paper will be fed from.
	Tray Priority	MP>T1>T2>T3, T1>T2>T3>MP, T1>T2>T3	Selects the priority of paper tray the paper will be fed from.
	MP Media Fix	off, Plain Paper, Thick Paper, Thicker Paper, Transparencies, Thin Paper, Bond Paper, Envelopes, Env.Thick, Env.Thin, Recycled Paper	Selects the media type of paper you put in the MP tray. When you select the media type here (except OFF), the setting for Media Type selected in the printer driver will be ignored.
	Manual Feed	off, on	Selects whether you want to feed paper manually.
	Duplex	off, on	Selects whether you want to automatically print on both sides of the paper.
	Duplex Type	Long Binding, Short Binding	Selects the type of duplex binding direction.
Quality	Resolution	HQ1200, 600 dpi, 300 dpi, 1200 dpi	You can select a print resolution of 300 dpi, 600 dpi, 1200dpi or HQ1200.
	HRC	off, Light, Medium, Dark	High Resolution Control (HRC) offers improved print quality of letters, numbers and graphics that conventional laser printers cannot achieve, with a resolution of 300 or 600 dpi.
	Toner Save	off, on	Selects whether you want to print lighter to save toner.
	Density	-6, -5, -4, -3, -2, -1, 0, 1, 2, 3, 4, 5, 6	Increases or decreases the print density.

Main menu	Sub menu	Options	Descriptions
Setup	Sleep Time (Power Save Time)	1 to 240 min.	Sets time for the printer to enter sleep mode after the last control panel operation. If you want to set Sleep Mode to off, go to the Sleep Mode submenu of the custom menu.
	Auto Continue	off, on	Selects whether you want the printer to recover from a recoverable error.
	Reprint	off, on	Selects whether you want to use Reprint functions. The printer driver setting overrides the Remote Printer Console setting. If you want to change the Reprint setting regardless of the printer driver setting, go to the Reprint Mask sub menu of the Custom menu.
	Page Protection	Auto, off, A4, Letter, Legal	If you use Page Protection function, select either Auto, A4, Letter or Legal.
	Emulation	Auto, PCL, EPSON, IBM, BR-SCRIPT	Selects the emulation mode you want to use.
	Auto Emulation	EPSON, IBM	Selects the emulation mode when you select Auto in Emulation sub menu
	Keep PCL	off, on	Selects whether you want to save the current PCL settings
	Error Print	off, on	Selects whether you want to print out the error message when an error occurs.

Main menu	Sub menu	Options	Descriptions
Print Menu	Media Type	Plain Paper, Thick Paper, Thicker Paper, Transparencies, Thin Paper, Bond Paper, Envelopes, Env.Thick, Env.Thin, Recycled Paper	You can set the media type you want to use.
	Paper	Letter, Legal, A4, Executive, B5, C5, Com-10, DL, Monarch, A5, A6, B6, DL Long Edge, A4 Long, Folio, Post Card, Organizer J, Organizer K, Organizer L, Organizer M	You can set the paper size you want to use.
	Copies	1 to 999	Sets the total number of copies to be printed.
	Orientation	Portrait, Landscape	Selects the paper orientation, Portrait or Landscape.
	X offset	-500 to 500 dots	Moves the print start position (top-left hand corner of the page) horizontally up to -500 (left) to +500 (right) dots in 300 dpi.
	Y offset	-500 to 500 dots	Moves the print start position (top-left hand corner of the page) vertically up to -500 (top) to +500 (bottom) dots in 300 dpi.
	Auto FF	off, on	Allows you to print the remaining data without pressing the Go button.
	FF Timeout	1 to 99 sec.	Sets time when Auto FF is on.
FF Suppress	off, on	If you select on , form feed is not allowed when there is no data.	

Main menu	Sub menu	Options	Descriptions
PCL	Font Number	The number of fonts available vary by model.	Selects the default font from the fonts list.
	Font Pitch/Point Size	Font Pitch: 0.1 to 576.0 Point Size: 0.25 to 999.75	Selects the font pitch or point size.
	Symbol Set	The Symbol Set available will vary by model.	Selects the symbol set.
	Auto LF	on (CR → CR + LF) off (CR → CR)	Selects whether a line feed will happen when the printer reaches the right margin.
	Auto CR	on (LF → LF + CR, FF → FF + CR, VT → VT + CR) off (LF → LF, FF → FF, VT → VT)	Selects whether a carriage return will happen when the printer position reaches the right margin.
	Auto Wrap	off, on	Selects whether a line feed carriage return will happen when the printer position reaches the right margin.
	Auto Skip	off, on	Selects whether a line feed carriage return will happen when the printer position reaches the bottom margin.
	Left Margin	xx column(s)	Sets the left margin at 10 cpi.
	Right Margin	xx column(s)	Sets the right margin at 10 cpi.
	Top Margin	0, 0.33, 0.5, 1.0, 1.5, 2.0 inches	Selects the top margin at a distance from the top edge of the paper.
	Bottom Margin	0, 0.33, 0.5, 1.0, 1.5, 2.0 inches	Selects the bottom margin at a distance from the bottom edge of the paper.
	Lines	5 to 128	Sets the number of lines on each page from 5 to 128 lines.
EPSON	Font Number	The number of fonts available vary by model.	Selects the default font from the fonts list.
	Font Pitch/Point Size	Font Pitch: 0.1 to 576.0 Point Size: 0.25 to 999.75	Selects the font pitch or point size.
	Character Set	The Symbol Set available will vary by model.	Selects the symbol set.
	Auto LF	on (CR → CR + LF) off (CR → CR)	Selects whether a line feed will happen when the printer reaches the right margin.
	Auto Mask	off, on	By selecting off , a line feed and carriage return will happen when the printer position reaches the bottom margin.
	Left Margin	xx column(s)	Sets the left margin at 10 cpi.
	Right Margin	xx column(s)	Sets the right margin at 10 cpi.
	Top Margin	0, 0.33, 0.5, 1.0, 1.5, 2.0 inches	Selects the top margin at a distance from the top edge of the paper.
	Bottom Margin	0, 0.33, 0.5, 1.0, 1.5, 2.0 inches	Selects the bottom margin at a distance from the bottom edge of the paper.
	Lines	5 to 128	Sets the number of lines on each page from 5 to 128 lines.

Main menu	Sub menu	Options	Descriptions	
IBM	Font Number	The number of fonts available vary by model.	Selects the default font from the fonts list.	
	Font Pitch/Point Size	Font Pitch: 0.1 to 576.0 Point Size: 0.25 to 999.75	Selects the font pitch or point size.	
	Character Set	The Symbol Set available will vary by model.	Selects the symbol set.	
	Auto LF	on (CR → CR + LF) off (CR → CR)	Selects whether a line feed will happen when the printer reaches the right margin.	
	Auto CR	on (LF → LF + CR, FF → FF + CR, VT → VT + CR) off (LF → LF, FF → FF, VT → VT)	Selects whether a carriage return will happen when the printer position reaches the right margin.	
	Auto Mask	off, on	By selecting off , a line feed and carriage return will happen when the printer position reaches the bottom margin.	
	Left Margin	xx column(s)	Sets the left margin at 10 cpi.	
	Right Margin	xx column(s)	Sets the right margin at 10 cpi.	
	Top Margin	0, 0.33, 0.5, 1.0, 1.5, 2.0 inches	Selects the top margin at a distance from the top edge of the paper.	
	Bottom Margin	0, 0.33, 0.5, 1.0, 1.5, 2.0 inches	Selects the bottom margin at a distance from the bottom edge of the paper.	
	Lines	xx line(s)	Sets the number of lines on each page.	
Network	IP Address	[000-255].[000-255]. [000-255].[000-255]	Sets the IP Address.	
	Subnet Mask	[000-255].[000-255]. [000-255].[000-255]	Sets the Subnet Mask.	
	Gateway	[000-255].[000-255]. [000-255].[000-255]	Sets the Gateway.	
Interface	Auto Interface Timeout	1 to 99 sec.	You need to set the time-out period for the auto interface selection.	
	Input Buffer (Level)	1 to 15	Increases or decreases the input buffer capacity.	
	Parallel	High-Speed	on, off	Turns high-speed parallel communication ON or OFF.
		Bi-Dir	on, off	Turns bi-directional parallel communications ON or OFF.
		Input Prime	on, off	Turns prime signal ON or OFF.
USB 2.0 Hi-Speed	on, off	Turns High-Speed USB 2.0 communication ON or OFF.		

Main menu	Sub menu	Options	Descriptions
Custom	MP First	off, on	Selects whether to feed paper from the Multi-purpose (MP) tray as a priority. This function is available only for models which have the MP tray.
	Sleep Mode	on, off	Turns the sleep mode ON or OFF.
	Sleep Indication	off, Dimmed	Selects whether the LED is to go off or be dimmed when the printer is in sleep mode.
	Toner Low Indication	Normal, Delay, off	You need to select Delay if you want the Toner Low LED indication to appear when the toner amount becomes lower than the default Normal setting.
	Printer Language	English, French, German, Dutch...	Selects the language you want to use. The printer driver setting overrides the Remote Printer Console setting. If you once send the data to printer using the printer driver, the printer's language setting will be changed.
	Reprint Mask	off, on	If you want to disable the Reprint function, select on . This setting overrides the printer driver Reprint setting.
	Thick Font	off, on	If you select on , Brougham font will be replaced by bold Brougham font.
	IP Conifg	AUTO, DHCP, BOOTP, RARP, STATIC	Selects a method to configure IP address. This function is available only for the network-ready model.
	APIPA	Enable, Disable	Turns the APIPA function enable or disable. This function is available only for the network-ready model.
	Net Memory Level	1 to 15	Selects the capacity of memory which is used for network function. This function is available only for the network-ready model with Upnp support.
	Advanced Command	-	This function is used for specific service functions.

Free Manuals Download Website

<http://myh66.com>

<http://usermanuals.us>

<http://www.somanuals.com>

<http://www.4manuals.cc>

<http://www.manual-lib.com>

<http://www.404manual.com>

<http://www.luxmanual.com>

<http://aubethermostatmanual.com>

Golf course search by state

<http://golfingnear.com>

Email search by domain

<http://emailbydomain.com>

Auto manuals search

<http://auto.somanuals.com>

TV manuals search

<http://tv.somanuals.com>