

Quick Setup Guide

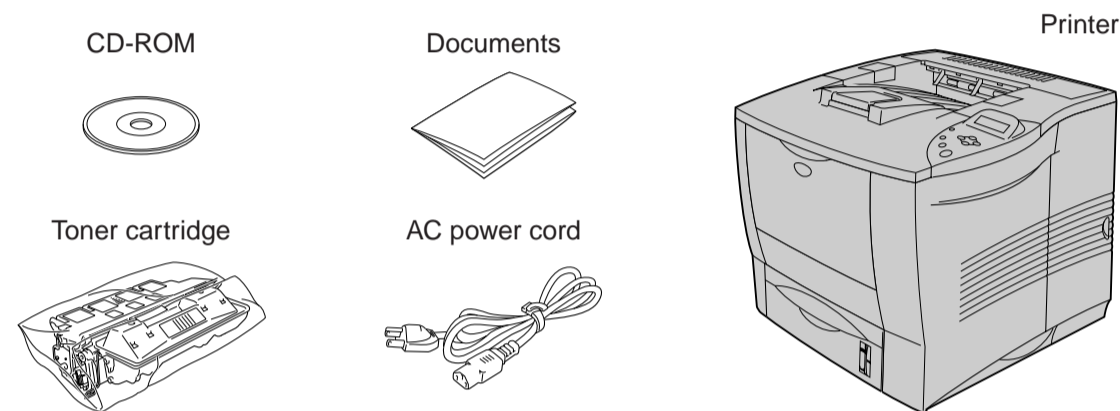
Read the "Safety Sheet" first to ensure that you use this printer safely.
Read this "Quick Setup Guide" before you set up the printer.

Before you can use the printer, you must complete the hardware setup and install the driver.

- Identify the operating system on your computer (Windows® 95 / 98 / Me, Windows NT® 4.0, Windows® 2000 or Macintosh® OS versions 8.5.1, 8.6, 9.0 and 9.04).
- An interface cable is not a standard accessory. Please purchase the appropriate interface cable for the interface you intend to use (Parallel, USB or Network).
- Follow the instructions in this guide for your operating system and interface.

Carton components

Carton components may differ from one country to another.
Save all packing materials and the printer carton. They should be saved for re-use when shipping the printer.



LJ0463001 Printed in Japan

What is included on the CD-ROM

You can get a variety of information from this CD-ROM.



Windows®



Macintosh®

Initial Setup
See the complete setup process from hardware setup to driver installation in a movie. We recommend that you follow these instructions when you first setup the printer.

Install Software (For Windows® only)
You can install not only the printer driver but also the following utility items.

For all users
-Printer Driver
-Automatic E-mail Printing

For administrators
-BRAdmin Professional
-Network Printer Driver Wizard
-Network Print Software
-Storage Manager
-Analysis Tool

BR-Script PPD Installer (For Macintosh® with Network only)
This printer supports Macintosh® OS versions 8.5.1, 8.6, 9.0 and 9.04.

Manual
View and print the Printer User's Guide, Network User's Guide and other documentation.

Brother Solutions Center
Introduction to the Brother user support web page. You can easily access Brother Solutions Center and receive the latest drivers and information for this printer.

Maintenance Tutorial
See the maintenance videos for this printer. We recommend that you view the videos before getting started.

Make Disk Sets (For Windows® only)
If you do not have a CD-ROM drive, copy the contents of the CD-ROM to floppy disks.

For all users

Step 1 Insert the CD-ROM into the CD-ROM drive.

For Windows® users only

- 1 Insert the CD-ROM into the CD-ROM drive. The opening screen will appear automatically.
- 2 Select the language you want.
- 3 Click the Initial Setup icon.
- 4 You can view the Initial Setup instructions.

For Macintosh® with Network users only

- 1 Insert the CD-ROM into the CD-ROM drive.
- 2 Double-click the Initial Setup icon.
- 3 Select the language you want.
- 4 You can view the Initial Setup instructions.

Step 2 Remove the protective parts.

- 1 Remove the protective part from the paper exit of the printer.
- 2 Open the top cover of the printer.
- 3 Remove the protective part from the printer.
- 4 Close the top cover of the printer.
- 5 Pull out the paper cassette, and then remove the protective part from the cassette.
- 6 Re-install the paper cassette into the printer.

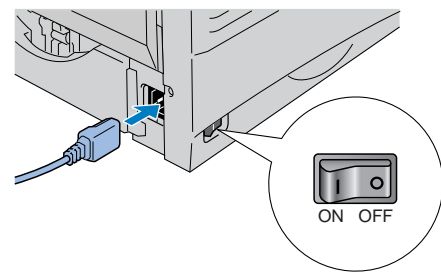
Step 3 Install the toner cartridge.

- 1 Open the top cover of the printer.
- 2 Unpack the toner cartridge. Rock it gently several times at a 45° angle.
- 3 Bend the tab up and down several times, and then pull it out until the sealing tape comes out all the way.
- 4 Install the toner cartridge firmly into the printer.
- 5 Close the top cover of the printer.

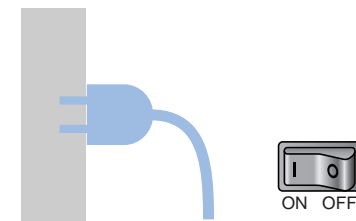
Step 4 Load paper in the paper cassette.

- 1 Pull the paper cassette completely out of the printer.
- 2 While pressing the paper guide release lever, slide the adjusters to fit the paper size. Check that they fit correctly into the slots.
Note: For Legal size paper, press the universal guide release button and pull out the rear of the paper cassette.
- 3 Load paper into the paper cassette. Check that the paper is flat in the tray and below the maximum paper mark.
- 4 Re-install the paper cassette into the printer.

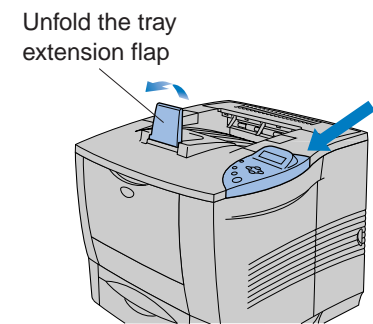
Step 5 Print a test page.



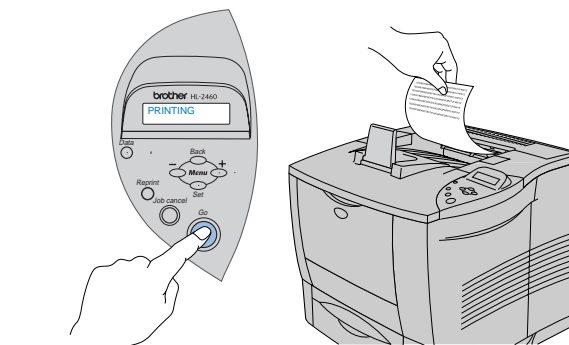
1 Make sure that the printer power switch is off. Connect the AC power cord to the printer. Do NOT connect the interface cable.



2 Plug the AC power cord into an AC outlet. Turn the power switch on.



3 After the printer has finished warming up, the **READY** message appears.



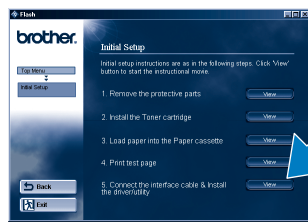
4 Press the **Go** switch. The printer prints a test page. Check that the test page has printed correctly.

Note: When you are ready to set the Control Panel message language, refer to the Control Panel section at the bottom of this sheet.

Follow the instructions for your interface cable and operating system.

For Parallel interface cable users (For Windows® users only)

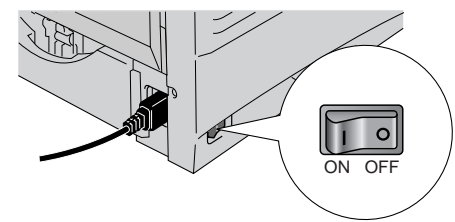
Step 6 Connect the printer to your PC & Install the printer driver.



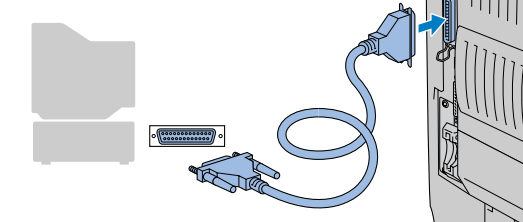
1 Click "Connect the interface cable and install the printer driver / utilities."



2 Select the parallel interface cable.



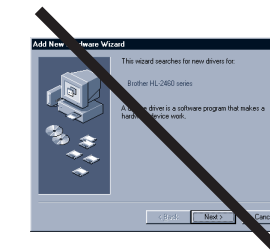
3 Turn the printer power switch off.



4 Connect the interface cable to your PC, and then connect it to the printer.



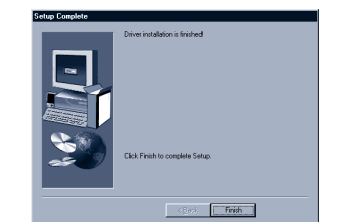
5 Turn the printer power switch on.



Note: If "Add New Hardware Wizard" appears, click the Cancel button.



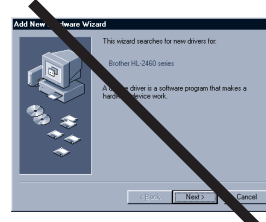
6 Click the Next button.



7 Click the Finish button. **The setup is now complete.**

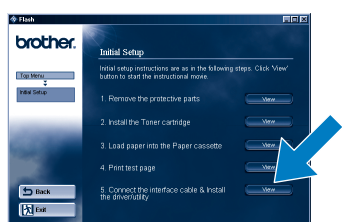
For USB interface cable users (For Windows® users only)

Step 6 Install the driver & Connect the printer to your PC.



Note: When "Add New Hardware Wizard" appears on your PC, click the Cancel button.

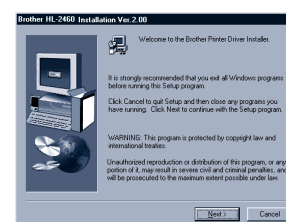
Note: Install the driver **before** you connect the USB interface cable to the printer. If you have already connected it, remove it.



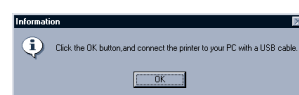
1 Click "Connect the interface cable and install the printer driver / utilities."



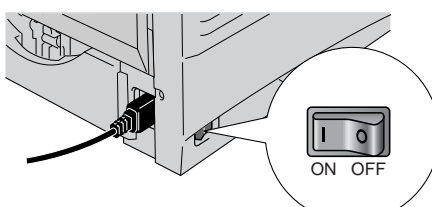
2 Select the USB cable. Follow the on-screen instructions.



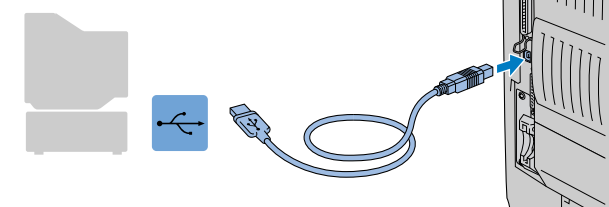
3 Click the Next button.



4 Click the OK button.



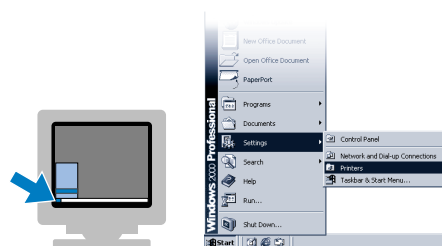
5 Make sure the printer power switch is on.



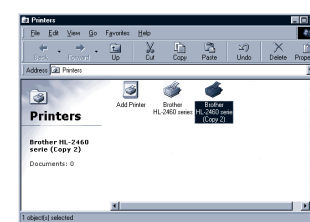
6 Connect the USB interface cable to your PC, and then connect it to the printer.

For Windows® 98/Me users: The setup is now complete.
For Windows® 2000 users: Go to Step 7.

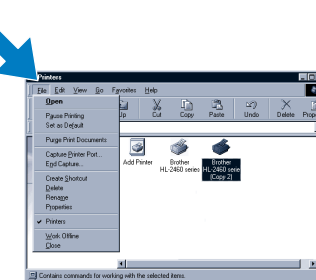
Step 7 (For Windows® 2000 users only) Set up your PC printer port.



1 After your PC has restarted, click **Start, Setting and Printers**.



2 Select the Brother HL-2460 series (copy2) icon.



3 Click the File menu, and then select **Set as Default printer**. **The setup is now complete.**

For Macintosh® users

If you print from a Macintosh computer, you will have to connect it to the printer via a Network (Brother recommends using the NC-4100h network board).

For Network users

If you want to connect your printer using a Network cable, refer to the **Quick Network Setup Guide**. After the administrator has made the required settings, install the driver referring to the "Installing the Driver for Network users" section of the **Quick Network Setup Guide**.

Control Panel



Data LED : Orange

On	Data remains in the printer buffer.
Blinking	Receiving or processing data.
Off	No remaining data.

Switches

Go	Exit from the control panel menu, reprint settings and clear error messages. Pause / Continue printing.
Job Cancel	Stop and cancel the printer operation in progress.
Reprint	Select the reprint menu.
Menu	+ Move forward and backward through menus.
	- Move forward and backward through menus.
Set	Select the control panel menu. Set the selected menus and the settings.
Back	Go back one level in the menu structure.

Language Setting (Default is English)

1. Select the **SETUP** mode by pressing the **+** switch, and then press the **Set** switch.
 2. Check that the **LANGUAGE** message appears, and then press the **Set** switch.
 3. Choose your language by pressing the **+** or **-** switch, and then press the **Set** switch. An asterisk mark (*) appears at the end of the display.
- (You can return to the **READY** status by pressing the **Go** switch.)

- Note**
1. A real time clock is built into this printer. Set the time referring to Chapter 3 of the User's Guide on the CD-ROM. You need to set the time before you can use the log management and reprint functions.
 2. Please enhance the RAMDISK size when you want to use the reprint functions without the optional HDD or CompactFlash. See RAM expansion in Chapter 4 of the User's Guide.

For more information, see "CONTROL PANEL" in Chapter 3 of the User's Guide on the supplied CD-ROM.

Free Manuals Download Website

<http://myh66.com>

<http://usermanuals.us>

<http://www.somanuals.com>

<http://www.4manuals.cc>

<http://www.manual-lib.com>

<http://www.404manual.com>

<http://www.luxmanual.com>

<http://aubethermostatmanual.com>

Golf course search by state

<http://golfingnear.com>

Email search by domain

<http://emailbydomain.com>

Auto manuals search

<http://auto.somanuals.com>

TV manuals search

<http://tv.somanuals.com>