



# USER GUIDE

## 2-PORT USB 3.0 SUPERSPEED PCI EXPRESS CARD

Model: 29055

# TABLE OF CONTENTS

Introduction.....	2
Features.....	3
System Requirements.....	4
Package Contents .....	5
Device Overview .....	6
Driver Installation .....	7
Device Installation .....	11
Verify Device Installation.....	14
Technical Specifications.....	15
Cables To Go One Year Warranty .....	16
Important Safety Information .....	17
Regulatory Compliance.....	18

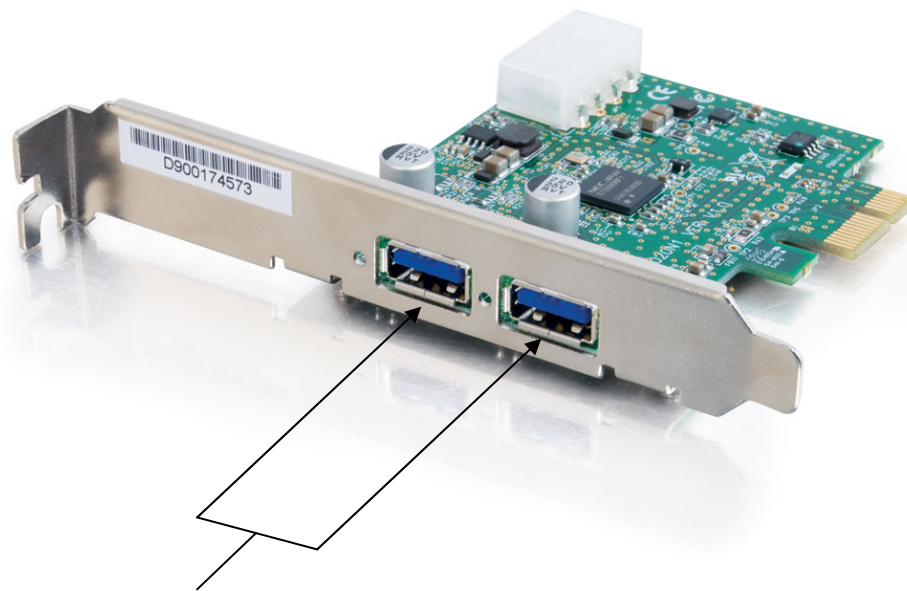
Thank you for purchasing the 2-Port USB 3.0 SuperSpeed PCI Express Card. The 2-Port USB 3.0 SuperSpeed PCI Express Card adds SuperSpeed USB capabilities to your computer. Simply install this card into an available PCI slot on your computer to add two USB 3.0 SuperSpeed ports. SuperSpeed USB supports transfer rates of up to 5 Gbps- up to 10 times faster than USB 2.0. The 2-Port USB 3.0 SuperSpeed PCI Express Card is ideal for quickly transferring large amounts of data from such devices as external hard drives, memory card readers, real-time video cameras, and other data intensive USB devices. **We recommend that you read this manual thoroughly and retain for future reference.**

- ❖ Adds two USB 3.0 A-Male ports to a computer
- ❖ Connects internally via the PCI-e connector
- ❖ 5 Gbps signaling rate- 10X faster than USB 2.0
- ❖ Backwards compatible with USB 2.0
- ❖ Improved power efficiency over USB 2.0
- ❖ Ideal for large data transfers from external hard drives, real-time video cameras, and other data intensive devices

❖ Operating System: Windows 7, XP, or Vista™

# PACKAGE CONTENTS

- ❖ 2-Port USB 3.0 SuperSpeed PCI Express Card
- ❖ Driver CD
- ❖ User Guide



**USB 3.0 Ports**

Before you install the device in your computer, you will need to install the necessary driver for proper operation. Please follow the procedure below.

## For Windows XP, Vista, Windows 7

**Note:** *The following setup is an example shown using a Windows XP operating system. Some screenshots may vary slightly depending on your operating system. The setup wizard is designed to step you through each part of the driver installation process successfully.*

### Step 1

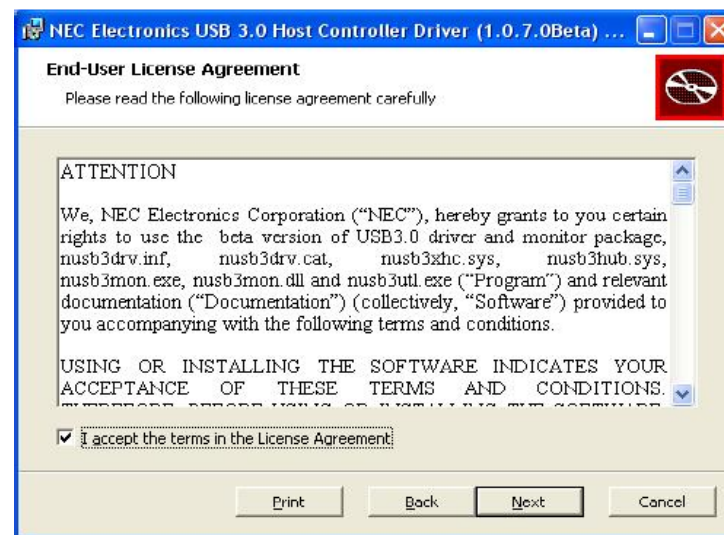
Insert the CD provided with this product and click **Install Driver**. The following screen will appear. Click **Next**.





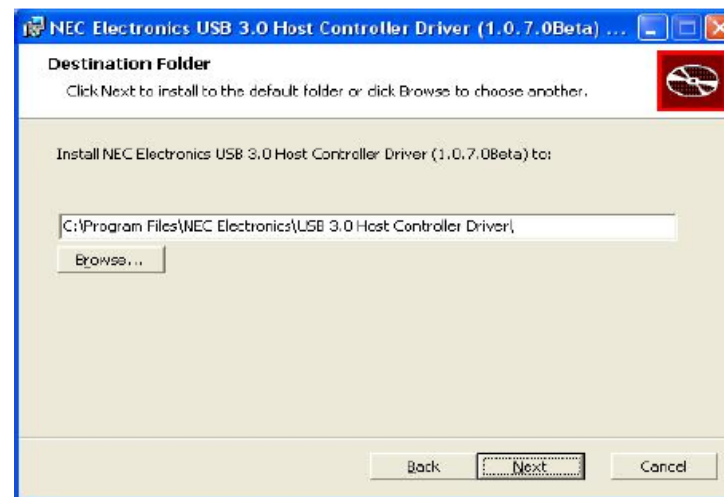
## Step 2

After reading the End-User License Agreement, please select **“I accept the terms in the License Agreement”** and click **Next**.



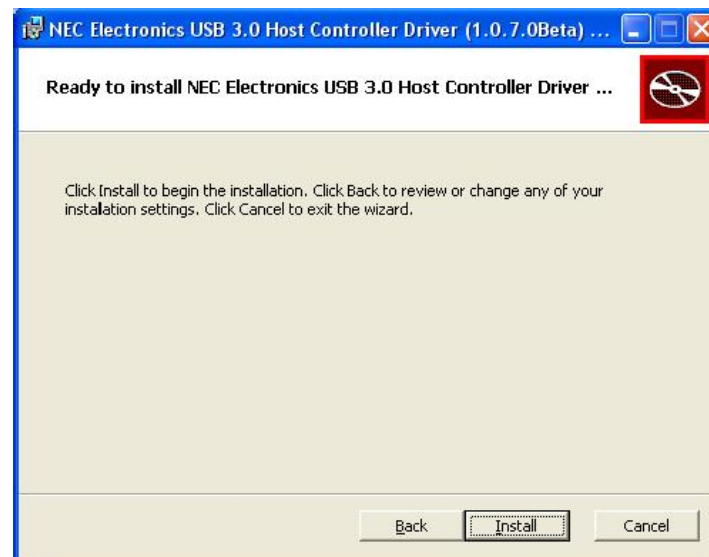
## Step 3

Please click **Browse** to choose the destination folder, and then click **Next**.

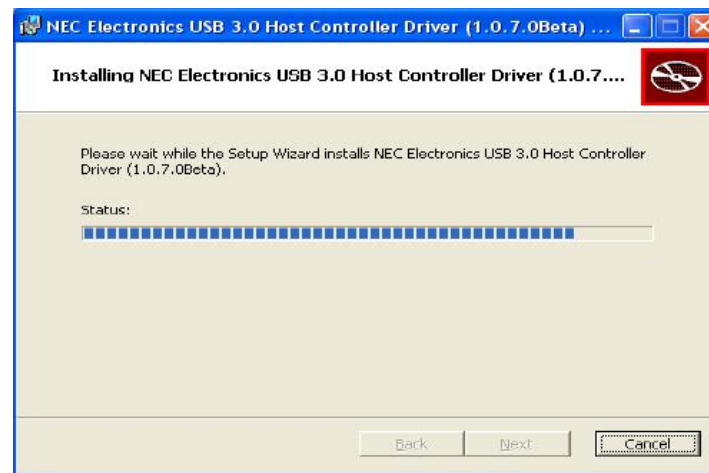


## Step 4

Click **Install** to begin driver installation.

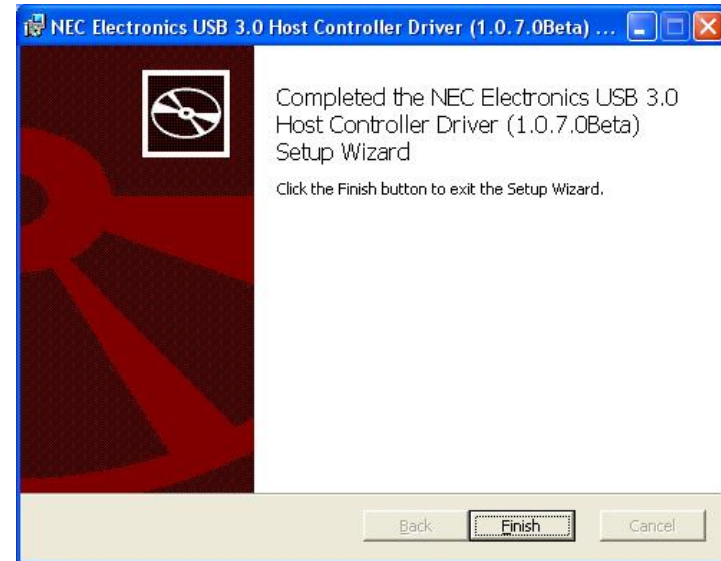


The driver installation may take a few minutes. You may also get a software installation Windows security pop-up during this time. Click Continue Anyway when it appears to complete the installation.



## Step 5

When the installation has completed, click **Finish** to exit the setup wizard.



## Step 1

Turn off your computer and remove the cover/panel to expose the PCI slot.

## Step 2

Plug the 2-Port USB 3.0 Card into the PCI slot on the computer.

## Step 3

Replace the cover/panel and turn on your computer.

When your computer starts up, a **Found New Hardware Wizard** will appear.

**Note:** *The following setup is an example shown using a Windows XP operating system. Some screenshots may vary slightly depending on your operating system. The setup wizard is designed to step you through each part of the driver installation process successfully.*

***The process outlined below will have to be completed two times because there are two USB 3.0 ports that need to be installed and recognized.***

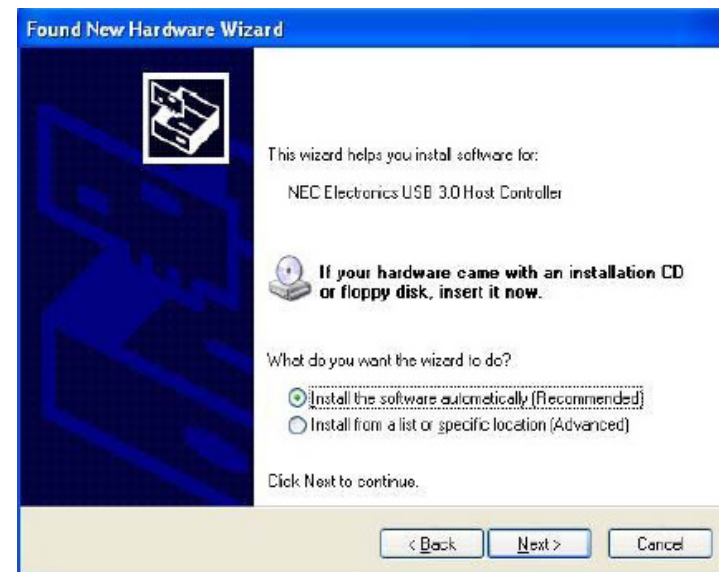
## Step 4

When the Found New Hardware Wizard appears, select **Yes, this time only**, and click **Next**.



## Step 5

Choose **Install the software automatically** and click **Next**. The Windows security pop-up may appear during this process. Click **Continue Anyway** to continue with the installation.



### Step 6

Click **Finish** to complete the installation and exit the wizard.



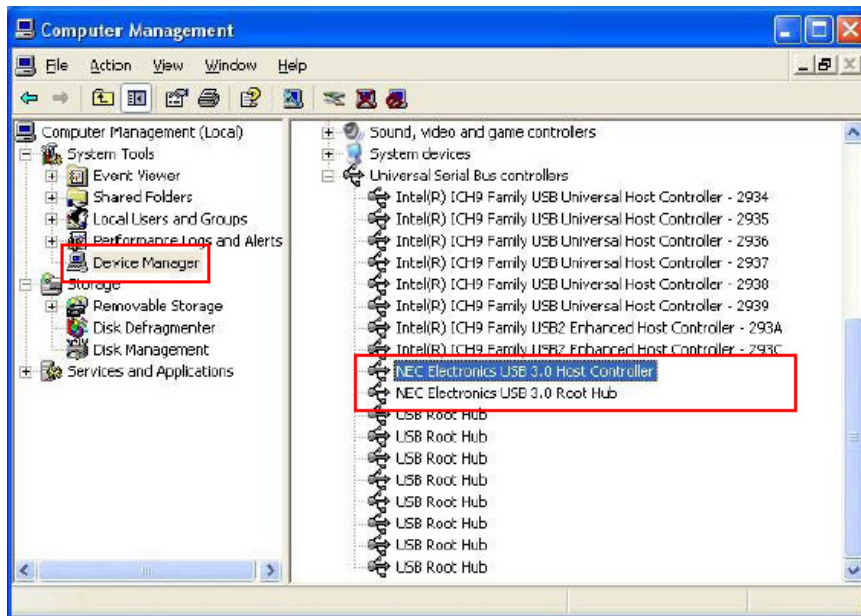
### Step 7

The Found New Hardware Wizard will appear again. Repeat steps 4-6 for second USB 3.0 port installation.

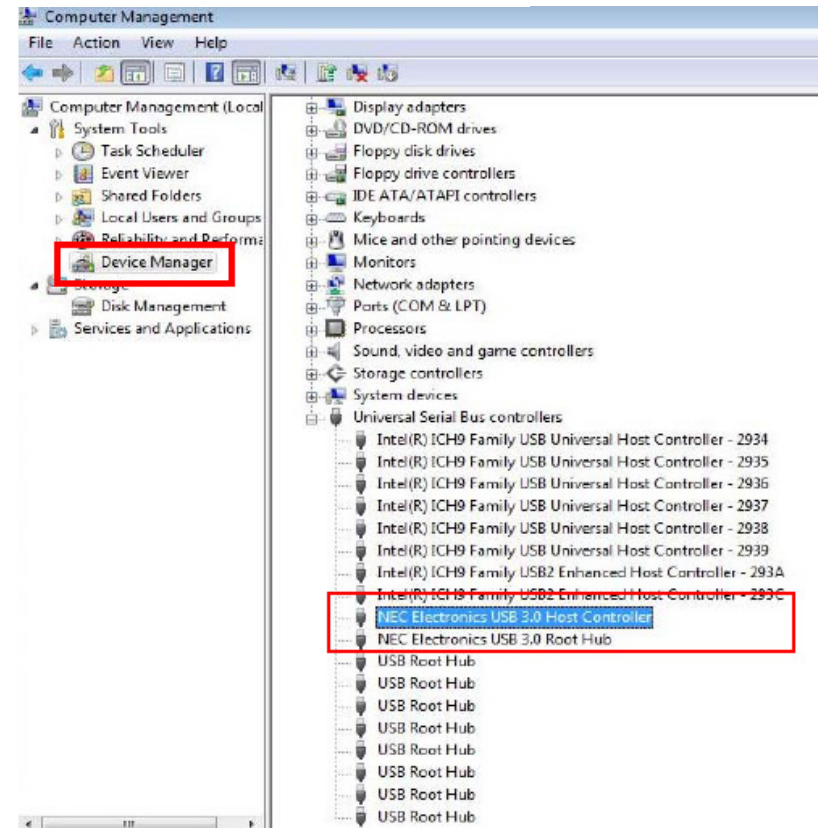
# VERIFY DEVICE INSTALLATION

After you have completed the driver and device installation, you can go to the Device Manager to verify the product is installed and recognized properly.

## Windows XP



## Windows Vista/Windows 7



Product No.	29055
Complies USB Rev.	Ver. 3.0
PCI Express Base Specification	Revision 2.0; PCI Bus Power Management Interface Specification: Revision 1.2
Connectors (Downstream)	USB 3.0 Type A x2
Data Speed Support	Low-speed (1.5Mbps)/ Full-speed (12Mbps)/ High-speed (480Mbps)/ Super-speed (5Gbps)
Date Transfer Type Support	Control/ Bulk/ Interrupt/ Isochronous
Power to Ports	500 mA (max.)
Product Weight	.20 lbs



# CABLES TO GO™ ONE YEAR WARRANTY

At Cables To Go, we want you to be totally confident in your purchase. That is why we offer a one year warranty on this device. If you experience problems due to workmanship or material defect for the duration of this warranty, we will repair or replace this device. To request a Return Merchandise Authorization (RMA) number, contact customer service at 1-800-506-9606 or [www.cablestogo.com](http://www.cablestogo.com).



Cables To Go  
3555 Kettering Blvd.  
Moraine, OH 45439  
1-800-506-9607  
[www.cablestogo.com](http://www.cablestogo.com)

# IMPORTANT SAFETY INFORMATION

**!** Do not plug the unit in any outlet that does not have enough current to allow the device to function. Refer to the specifications in this manual for power level of the unit.

**! Liquid:**

If this unit or its corresponding power adapter has had liquid spilled on or in it, do not attempt to use the unit. Do not attempt to use this product in an outdoor environment as elements such as rain, snow, hail, etc. can damage the product.

**!** In case of a storm, it is recommended that you unplug this device from the outlet.

**!** Avoid placing this product next to objects that produce heat such as portable heaters, space heaters, or heating ducts.

**! THERE ARE NO USER SERVICEABLE PARTS**

Do not attempt to open this product and expose the internal circuitry. If you feel that the product is defective, unplug the unit and refer to the warranty information section of this manual.

©2010 Cables To Go. Microsoft, XP, and Vista are either registered trademarks or trademarks of Microsoft Corporation in the United States and/or other countries. This product is not endorsed or manufactured by Microsoft Corporation.

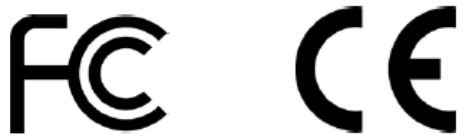
## **FCC Conditions**

This equipment has been tested and found to comply with Part 15 of the FCC Rules. Operation is subject to the following two conditions:

- (1) This device may not cause harmful interference
- (2) This device must accept any interference received. Including interference that may cause undesired operation.

## **CE**

This equipment is in compliance with the requirements of the following regulations:  
EN 55 022: CLASS B





For more information on this product or to check for updated drivers, manuals or frequently asked questions please visit our website.

[www.cablestogo.com](http://www.cablestogo.com)



**VER. 1.0.4.16.10**

## Free Manuals Download Website

<http://myh66.com>

<http://usermanuals.us>

<http://www.somanuals.com>

<http://www.4manuals.cc>

<http://www.manual-lib.com>

<http://www.404manual.com>

<http://www.luxmanual.com>

<http://aubethermostatmanual.com>

Golf course search by state

<http://golfingnear.com>

Email search by domain

<http://emailbydomain.com>

Auto manuals search

<http://auto.somanuals.com>

TV manuals search

<http://tv.somanuals.com>