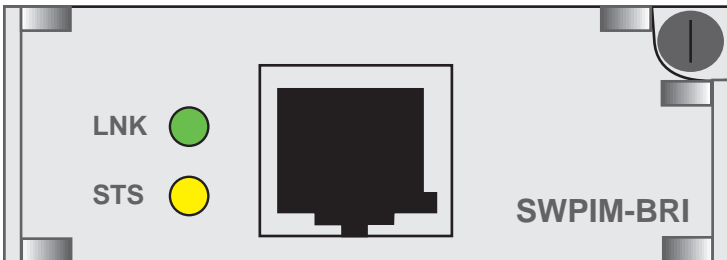


SWPIM-BRI Installation Guide





Only qualified personnel should perform installation procedures.

NOTICE

Cabletron Systems reserves the right to make changes in specifications and other information contained in this document without prior notice. The reader should in all cases consult Cabletron Systems to determine whether any such changes have been made.

The hardware, firmware, or software described in this manual is subject to change without notice.

IN NO EVENT SHALL CABLETRON SYSTEMS BE LIABLE FOR ANY INCIDENTAL, INDIRECT, SPECIAL, OR CONSEQUENTIAL DAMAGES WHATSOEVER (INCLUDING BUT NOT LIMITED TO LOST PROFITS) ARISING OUT OF OR RELATED TO THIS MANUAL OR THE INFORMATION CONTAINED IN IT, EVEN IF CABLETRON SYSTEMS HAS BEEN ADVISED OF, KNOWN, OR SHOULD HAVE KNOWN, THE POSSIBILITY OF SUCH DAMAGES.

Cabletron Systems, Inc.
35 Industrial Way
Rochester, NH 03867

© 2000 Cabletron Systems, Inc.
All Rights Reserved
Printed in the United States of America

Order Number: 9033038-02 April 2000

Cabletron Systems, **SPECTRUM**, and **LANVIEW** are registered trademarks and **SmartSwitch** is a trademark of Cabletron Systems, Inc.

All other product names mentioned in this manual may be trademarks or registered trademarks of their respective companies.

FCC NOTICE

This device complies with Part 15 of the FCC rules. Operation is subject to the following two conditions: (1) this device may not cause harmful interference, and (2) this device must accept any interference received, including interference that may cause undesired operation.

NOTE: This equipment has been tested and found to comply with the limits for a Class A digital device, pursuant to Part 15 of the FCC rules. These limits are designed to provide reasonable protection against harmful interference when the equipment is operated in a commercial environment. This equipment uses, generates, and can radiate radio frequency energy and if not installed in accordance with the operator's manual, may cause harmful interference to radio communications. Operation of this equipment in a residential area is likely to cause interference in which case the user will be required to correct the interference at his own expense.

WARNING: Changes or modifications made to this device which are not expressly approved by the party responsible for compliance could void the user's authority to operate the equipment.

INDUSTRY CANADA NOTICE

This digital apparatus does not exceed the Class A limits for radio noise emissions from digital apparatus set out in the Radio Interference Regulations of the Canadian Department of Communications.

Le présent appareil numérique n'émet pas de bruits radioélectriques dépassant les limites applicables aux appareils numériques de la class A prescrites dans le Règlement sur le brouillage radioélectrique édicté par le ministère des Communications du Canada.

NOTICE: The Industry Canada label identifies certified equipment. This certification means that the equipment meets telecommunications network protective, operational and safety requirements as prescribed in the appropriate Terminal Equipment Technical Requirements documents (s). The department does not guarantee the equipment will operate to the user's satisfaction.

Before installing this equipment, users should ensure that it is permissible to be connected to the facilities of the local telecommunications company. The equipment must also be installed using an acceptable method of connection. The customer should be aware that compliance with the above conditions may not prevent degradation of service in some situations.

Repairs to certified equipment should be coordinated by a representative designated by the supplier. Any repairs or alterations made by the user to this equipment, or equipment malfunctions, may give the telecommunications company cause to request the user to disconnect the equipment.

Users should ensure for their own protection that the electrical ground connections of the power utility, telephone lines and internal metallic water pipe system, if present, are connected together. This precaution may be particularly important in rural areas. **Caution:** Users should not attempt to make such connections themselves, but should contact the appropriate electric inspection authority, or electrician, as appropriate.

NOTICE: The Ringer Equivalence Number (REN) assigned to each terminal device provides an indication of the maximum number of terminals allowed to be connected to a telephone interface. The termination on an interface may consist of any combination of devices subject only to the requirement that the sum of the ringer equivalence Numbers of all the devices does not exceed 5.

AUSTRALIAN TELECOM



This equipment has been tested and is compliant with ACA TS 031.

VCCI NOTICE

This is a Class A product based on the standard of the Voluntary Control Council for Interference by Information Technology Equipment (VCCI). If this equipment is used in a domestic environment, radio disturbance may arise. When such trouble occurs, the user may be required to take corrective actions.

この装置は、情報処理装置等電波障害自主規制協議会（VCCI）の基準に基づくクラスA情報技術装置です。この装置を家庭環境で使用すると電波妨害を引き起こすことがあります。この場合には使用者が適切な対策を講ずるよう要求されることがあります。

**CABLETRON SYSTEMS, INC.
PROGRAM LICENSE AGREEMENT**

IMPORTANT: THIS LICENSE APPLIES FOR USE OF PRODUCT IN THE FOLLOWING GEOGRAPHICAL REGIONS:

**CANADA
MEXICO
CENTRAL AMERICA
SOUTH AMERICA**

**BEFORE OPENING OR UTILIZING THE ENCLOSED PRODUCT,
CAREFULLY READ THIS LICENSE AGREEMENT.**

This document is an agreement (“Agreement”) between You, the end user, and Cabletron Systems, Inc. (“Cabletron”) that sets forth your rights and obligations with respect to the Cabletron software program (“Program”) in the package. The Program may be contained in firmware, chips or other media. UTILIZING THE ENCLOSED PRODUCT, YOU ARE AGREEING TO BECOME BOUND BY THE TERMS OF THIS AGREEMENT, WHICH INCLUDES THE LICENSE AND THE LIMITATION OF WARRANTY AND DISCLAIMER OF LIABILITY. IF YOU DO NOT AGREE TO THE TERMS OF THIS AGREEMENT, RETURN THE UNOPENED PRODUCT TO CABLETRON OR YOUR DEALER, IF ANY, WITHIN TEN (10) DAYS FOLLOWING THE DATE OF RECEIPT FOR A FULL REFUND.

IF YOU HAVE ANY QUESTIONS ABOUT THIS AGREEMENT, CONTACT CABLETRON SYSTEMS +1-603-332-9400. Attn: Legal Department.

1. LICENSE. You have the right to use only the one (1) copy of the Program provided in this package subject to the terms and conditions of this License Agreement.

You may not copy, reproduce or transmit any part of the Program except as permitted by the Copyright Act of the United States or as authorized in writing by Cabletron.

2. OTHER RESTRICTIONS. You may not reverse engineer, decompile, or disassemble the Program.

3. APPLICABLE LAW. This License Agreement shall be interpreted and governed under the laws and in the state and federal courts of New Hampshire. You accept the personal jurisdiction and venue of the New Hampshire courts.

4. EXPORT REQUIREMENTS. You understand that Cabletron and its Affiliates are subject to regulation by agencies of the U.S. Government, including the U.S. Department of Commerce, which prohibit export or diversion of certain technical products to certain countries, unless a license to export the product is obtained from the U.S. Government or an exception from obtaining such license may be relied upon by the exporting party.

If the Program is exported from the United States pursuant to the License Exception CIV under the U.S. Export Administration Regulations, You agree that You are a civil end user of the Program and agree that You will use the Program for civil end uses only and not for military purposes.

If the Program is exported from the United States pursuant to the License Exception TSR under the U.S. Export Administration Regulations, in addition to the restriction on transfer set forth in Sections 1 or 2 of this Agreement, You agree not to (i) reexport or release the Program, the source code for the Program or technology to a national of a country in Country Groups D:1 or E:2 (Albania, Armenia, Azerbaijan, Belarus, Bulgaria, Cambodia, Cuba, Estonia, Georgia, Iraq, Kazakhstan, Kyrgyzstan, Laos, Latvia, Libya, Lithuania, Moldova, North Korea, the People's Republic of China, Romania, Russia, Rwanda, Tajikistan, Turkmenistan, Ukraine, Uzbekistan, Vietnam, or such other countries as may be designated by the United States Government), (ii) export to Country Groups D:1 or E:2 (as defined herein) the direct product of the Program or the technology, if such foreign produced direct product is subject to national security controls as identified on the U.S. Commerce Control List, or (iii) if the direct product of the technology is a complete plant or any major component of a plant, export to Country Groups D:1 or E:2 the direct product of the plant or a major component thereof, if such foreign produced direct product is subject to national security controls as identified on the U.S. Commerce Control List or is subject to State Department controls under the U.S. Munitions List.

5. UNITED STATES GOVERNMENT RESTRICTED RIGHTS. The enclosed Product (i) was developed solely at private expense; (ii) contains "restricted computer software" submitted with restricted rights in accordance with section 52.227-19 (a) through (d) of the Commercial Computer Software-Restricted Rights Clause and its successors, and (iii) in all respects is proprietary data belonging to Cabletron and/or its suppliers. For Department of Defense units, the Product is considered commercial computer software in accordance with DFARS section 227.7202-3 and its successors, and use, duplication, or disclosure by the Government is subject to restrictions set forth herein.

6. EXCLUSION OF WARRANTY. Except as may be specifically provided by Cabletron in writing, Cabletron makes no warranty, expressed or implied, concerning the Program (including its documentation and media).

CABLETRON DISCLAIMS ALL WARRANTIES, OTHER THAN THOSE SUPPLIED TO YOU BY CABLETRON IN WRITING, EITHER EXPRESS OR IMPLIED, INCLUDING BUT NOT LIMITED TO IMPLIED WARRANTIES OF MERCHANTABILITY AND FITNESS FOR A PARTICULAR PURPOSE, WITH RESPECT TO THE PROGRAM, THE ACCOMPANYING WRITTEN MATERIALS, AND ANY ACCOMPANYING HARDWARE.

7. NO LIABILITY FOR CONSEQUENTIAL DAMAGES. IN NO EVENT SHALL CABLETRON OR ITS SUPPLIERS BE LIABLE FOR ANY DAMAGES WHATSOEVER (INCLUDING, WITHOUT LIMITATION, DAMAGES FOR LOSS OF BUSINESS, PROFITS, BUSINESS INTERRUPTION, LOSS OF BUSINESS INFORMATION, SPECIAL, INCIDENTAL, CONSEQUENTIAL, OR RELIANCE DAMAGES, OR OTHER LOSS) ARISING OUT OF THE USE OR INABILITY TO USE THIS CABLETRON PRODUCT, EVEN IF CABLETRON HAS BEEN ADVISED OF THE POSSIBILITY OF SUCH DAMAGES. BECAUSE SOME STATES DO NOT ALLOW THE EXCLUSION OR LIMITATION OF LIABILITY FOR CONSEQUENTIAL OR INCIDENTAL DAMAGES, OR IN THE DURATION OR LIMITATION OF IMPLIED WARRANTIES IN SOME INSTANCES, THE ABOVE LIMITATION AND EXCLUSIONS MAY NOT APPLY TO YOU.

CABLETRON SYSTEMS SALES AND SERVICE, INC. PROGRAM LICENSE AGREEMENT

IMPORTANT: THIS LICENSE APPLIES FOR USE OF PRODUCT IN THE UNITED STATES OF AMERICA AND BY UNITED STATES OF AMERICA GOVERNMENT END USERS.

**BEFORE OPENING OR UTILIZING THE ENCLOSED PRODUCT,
CAREFULLY READ THIS LICENSE AGREEMENT.**

This document is an agreement (“Agreement”) between You, the end user, and Cabletron Systems Sales and Service, Inc. (“Cabletron”) that sets forth your rights and obligations with respect to the Cabletron software program (“Program”) in the package. The Program may be contained in firmware, chips or other media. UTILIZING THE ENCLOSED PRODUCT, YOU ARE AGREEING TO BECOME BOUND BY THE TERMS OF THIS AGREEMENT, WHICH INCLUDES THE LICENSE AND THE LIMITATION OF WARRANTY AND DISCLAIMER OF LIABILITY. IF YOU DO NOT AGREE TO THE TERMS OF THIS AGREEMENT, RETURN THE UNOPENED PRODUCT TO CABLETRON OR YOUR DEALER, IF ANY, WITHIN TEN (10) DAYS FOLLOWING THE DATE OF RECEIPT FOR A FULL REFUND.

IF YOU HAVE ANY QUESTIONS ABOUT THIS AGREEMENT, CONTACT CABLETRON SYSTEMS +1-603-332-9400. Attn: Legal Department.

1. LICENSE. You have the right to use only the one (1) copy of the Program provided in this package subject to the terms and conditions of this License Agreement.

You may not copy, reproduce or transmit any part of the Program except as permitted by the Copyright Act of the United States or as authorized in writing by Cabletron.

2. OTHER RESTRICTIONS. You may not reverse engineer, decompile, or disassemble the Program.

3. APPLICABLE LAW. This License Agreement shall be interpreted and governed under the laws and in the state and federal courts of New Hampshire. You accept the personal jurisdiction and venue of the New Hampshire courts.

4. EXPORT REQUIREMENTS. You understand that Cabletron and its Affiliates are subject to regulation by agencies of the U.S. Government, including the U.S. Department of Commerce, which prohibit export or diversion of certain technical products to certain countries, unless a license to export the product is obtained from the U.S. Government or an exception from obtaining such license may be relied upon by the exporting party.

If the Program is exported from the United States pursuant to the License Exception CIV under the U.S. Export Administration Regulations, You agree that You are a civil end user of the Program and agree that You will use the Program for civil end uses only and not for military purposes.

If the Program is exported from the United States pursuant to the License Exception TSR under the U.S. Export Administration Regulations, in addition to the restriction on transfer set forth in Sections 1 or 2 of this Agreement, You agree not to (i) reexport or release the Program, the source code for the Program or technology to a national of a country in Country Groups D:1 or E:2 (Albania, Armenia, Azerbaijan, Belarus, Bulgaria, Cambodia, Cuba, Estonia, Georgia, Iraq, Kazakhstan, Kyrgyzstan, Laos, Latvia, Libya, Lithuania, Moldova, North Korea, the People's Republic of China, Romania, Russia, Rwanda, Tajikistan, Turkmenistan, Ukraine, Uzbekistan, Vietnam, or such other countries as may be designated by the United States Government), (ii) export to Country Groups D:1 or E:2 (as defined herein) the direct product of the Program or the technology, if such foreign produced direct product is subject to national security controls as identified on the U.S. Commerce Control List, or (iii) if the direct product of the technology is a complete plant or any major component of a plant, export to Country Groups D:1 or E:2 the direct product of the plant or a major component thereof, if such foreign produced direct product is subject to national security controls as identified on the U.S. Commerce Control List or is subject to State Department controls under the U.S. Munitions List.

5. UNITED STATES GOVERNMENT RESTRICTED RIGHTS. The enclosed Product (i) was developed solely at private expense; (ii) contains "restricted computer software" submitted with restricted rights in accordance with section 52.227-19 (a) through (d) of the Commercial Computer Software-Restricted Rights Clause and its successors, and (iii) in all respects is proprietary data belonging to Cabletron and/or its suppliers. For Department of Defense units, the Product is considered commercial computer software in accordance with DFARS section 227.7202-3 and its successors, and use, duplication, or disclosure by the Government is subject to restrictions set forth herein.

6. EXCLUSION OF WARRANTY. Except as may be specifically provided by Cabletron in writing, Cabletron makes no warranty, expressed or implied, concerning the Program (including its documentation and media).

CABLETRON DISCLAIMS ALL WARRANTIES, OTHER THAN THOSE SUPPLIED TO YOU BY CABLETRON IN WRITING, EITHER EXPRESS OR IMPLIED, INCLUDING BUT NOT LIMITED TO IMPLIED WARRANTIES OF MERCHANTABILITY AND FITNESS FOR A PARTICULAR PURPOSE, WITH RESPECT TO THE PROGRAM, THE ACCOMPANYING WRITTEN MATERIALS, AND ANY ACCOMPANYING HARDWARE.

7. NO LIABILITY FOR CONSEQUENTIAL DAMAGES. IN NO EVENT SHALL CABLETRON OR ITS SUPPLIERS BE LIABLE FOR ANY DAMAGES WHATSOEVER (INCLUDING, WITHOUT LIMITATION, DAMAGES FOR LOSS OF BUSINESS, PROFITS, BUSINESS INTERRUPTION, LOSS OF BUSINESS INFORMATION, SPECIAL, INCIDENTAL, CONSEQUENTIAL, OR RELIANCE DAMAGES, OR OTHER LOSS) ARISING OUT OF THE USE OR INABILITY TO USE THIS CABLETRON PRODUCT, EVEN IF CABLETRON HAS BEEN ADVISED OF THE POSSIBILITY OF SUCH DAMAGES. BECAUSE SOME STATES DO NOT ALLOW THE EXCLUSION OR LIMITATION OF LIABILITY FOR CONSEQUENTIAL OR INCIDENTAL DAMAGES, OR IN THE DURATION OR LIMITATION OF IMPLIED WARRANTIES IN SOME INSTANCES, THE ABOVE LIMITATION AND EXCLUSIONS MAY NOT APPLY TO YOU.

CABLETRON SYSTEMS LIMITED PROGRAM LICENSE AGREEMENT

IMPORTANT: THIS LICENSE APPLIES FOR THE USE OF THE PRODUCT IN THE FOLLOWING GEOGRAPHICAL REGIONS:

**EUROPE
MIDDLE EAST
AFRICA
ASIA
AUSTRALIA
PACIFIC RIM**

**BEFORE OPENING OR UTILIZING THE ENCLOSED PRODUCT,
CAREFULLY READ THIS LICENSE AGREEMENT.**

This document is an agreement (“Agreement”) between You, the end user, and Cabletron Systems Limited (“Cabletron”) that sets forth your rights and obligations with respect to the Cabletron software program (“Program”) in the package. The Program may be contained in firmware, chips or other media. UTILIZING THE ENCLOSED PRODUCT, YOU ARE AGREEING TO BECOME BOUND BY THE TERMS OF THIS AGREEMENT, WHICH INCLUDES THE LICENSE AND THE LIMITATION OF WARRANTY AND DISCLAIMER OF LIABILITY. IF YOU DO NOT AGREE TO THE TERMS OF THIS AGREEMENT, RETURN THE UNOPENED PRODUCT TO CABLETRON OR YOUR DEALER, IF ANY, WITHIN TEN (10) DAYS FOLLOWING THE DATE OF RECEIPT FOR A FULL REFUND.

IF YOU HAVE ANY QUESTIONS ABOUT THIS AGREEMENT, CONTACT CABLETRON SYSTEMS +1-603-332-9400. Attn: Legal Department.

1. LICENSE. You have the right to use only the one (1) copy of the Program provided in this package subject to the terms and conditions of this License Agreement.

You may not copy, reproduce or transmit any part of the Program except as permitted by the Copyright Act of the United States or as authorized in writing by Cabletron.

2. OTHER RESTRICTIONS. You may not reverse engineer, decompile, or disassemble the Program.

3. APPLICABLE LAW. This License Agreement shall be governed in accordance with English law. The English courts shall have exclusive jurisdiction in the event of any disputes.

4. EXPORT REQUIREMENTS. You understand that Cabletron and its Affiliates are subject to regulation by agencies of the U.S. Government, including the U.S. Department of Commerce, which prohibit export or diversion of certain technical products to certain countries, unless a license to export the product is obtained from the U.S. Government or an exception from obtaining such license may be relied upon by the exporting party.

If the Program is exported from the United States pursuant to the License Exception CIV under the U.S. Export Administration Regulations, You agree that You are a civil end user of the Program and agree that You will use the Program for civil end uses only and not for military purposes.

If the Program is exported from the United States pursuant to the License Exception TSR under the U.S. Export Administration Regulations, in addition to the restriction on transfer set forth in Sections 1 or 2 of this Agreement, You agree not to (i) reexport or release the Program, the source code for the Program or technology to a national of a country in Country Groups D:1 or E:2 (Albania, Armenia, Azerbaijan, Belarus, Bulgaria, Cambodia, Cuba, Estonia, Georgia, Iraq, Kazakhstan, Kyrgyzstan, Laos, Latvia, Libya, Lithuania, Moldova, North Korea, the People's Republic of China, Romania, Russia, Rwanda, Tajikistan, Turkmenistan, Ukraine, Uzbekistan, Vietnam, or such other countries as may be designated by the United States Government), (ii) export to Country Groups D:1 or E:2 (as defined herein) the direct product of the Program or the technology, if such foreign produced direct product is subject to national security controls as identified on the U.S. Commerce Control List, or (iii) if the direct product of the technology is a complete plant or any major component of a plant, export to Country Groups D:1 or E:2 the direct product of the plant or a major component thereof, if such foreign produced direct product is subject to national security controls as identified on the U.S. Commerce Control List or is subject to State Department controls under the U.S. Munitions List.

5. UNITED STATES GOVERNMENT RESTRICTED RIGHTS. The enclosed Product (i) was developed solely at private expense; (ii) contains "restricted computer software" submitted with restricted rights in accordance with section 52.227-19 (a) through (d) of the Commercial Computer Software-Restricted Rights Clause and its successors, and (iii) in all respects is proprietary data belonging to Cabletron and/or its suppliers. For Department of Defense units, the Product is considered commercial computer software in accordance with DFARS section 227.7202-3 and its successors, and use, duplication, or disclosure by the Government is subject to restrictions set forth herein.

6. EXCLUSION OF WARRANTY. Except as may be specifically provided by Cabletron in writing, Cabletron makes no warranty, expressed or implied, concerning the Program (including its documentation and media).

CABLETRON DISCLAIMS ALL WARRANTIES, OTHER THAN THOSE SUPPLIED TO YOU BY CABLETRON IN WRITING, EITHER EXPRESS OR IMPLIED, INCLUDING BUT NOT LIMITED TO IMPLIED WARRANTIES OF MERCHANTABILITY AND FITNESS FOR A PARTICULAR PURPOSE, WITH RESPECT TO THE PROGRAM, THE ACCOMPANYING WRITTEN MATERIALS, AND ANY ACCOMPANYING HARDWARE.

7. NO LIABILITY FOR CONSEQUENTIAL DAMAGES. IN NO EVENT SHALL CABLETRON OR ITS SUPPLIERS BE LIABLE FOR ANY DAMAGES WHATSOEVER (INCLUDING, WITHOUT LIMITATION, DAMAGES FOR LOSS OF BUSINESS, PROFITS, BUSINESS INTERRUPTION, LOSS OF BUSINESS INFORMATION, SPECIAL, INCIDENTAL, CONSEQUENTIAL, OR RELIANCE DAMAGES, OR OTHER LOSS) ARISING OUT OF THE USE OR INABILITY TO USE THIS CABLETRON PRODUCT, EVEN IF CABLETRON HAS BEEN ADVISED OF THE POSSIBILITY OF SUCH DAMAGES. BECAUSE SOME STATES DO NOT ALLOW THE EXCLUSION OR LIMITATION OF LIABILITY FOR CONSEQUENTIAL OR INCIDENTAL DAMAGES, OR IN THE DURATION OR LIMITATION OF IMPLIED WARRANTIES IN SOME INSTANCES, THE ABOVE LIMITATION AND EXCLUSIONS MAY NOT APPLY TO YOU.

DECLARATION OF CONFORMITY

Application of Council Directive(s): **89/336/EEC**
73/23/EEC

Manufacturer's Name: **Cabletron Systems, Inc.**

Manufacturer's Address: **35 Industrial Way**
PO Box 5005
Rochester, NH 03867

European Representative Name: **Mr. Jim Sims**

European Representative Address: **Cabletron Systems Limited**
Nexus House, Newbury Business Park
London Road, Newbury
Berkshire RG14 2PZ, England

Conformance to Directive(s)/Product Standards: **EC Directive 89/336/EEC**
EC Directive 73/23/EEC
EN 55022
EN 55024
EN 60950
EN 60825

Equipment Type/Environment: **Networking Equipment, for use in a**
Commercial or Light Industrial
Environment.

We the undersigned, hereby declare, under our sole responsibility, that the equipment packaged with this notice conforms to the above directives.

Manufacturer

Mr. Thomas R. Whissel

Full Name

Compliance Engineering Manager

Title

Rochester, NH, USA

Location

Legal Representative in Europe

Mr. Jim Sims

Full Name

President - E.M.E.A.

Title

Newbury, Berkshire, England

Location

CONTENTS

INTRODUCTION

Using This Guide	xiii
Structure of This Guide.....	xiv
SWPIM-BRI Features	xiv
Related Manuals.....	xv
Document Conventions	xvi
Getting Help.....	xvii

CHAPTER 1 INSTALLATION

1.1 Unpacking the SWPIM-BRI	1-1
1.2 Installing the SWPIM-BRI	1-2
1.3 LANVIEW LED Indications	1-4
1.4 Connecting to the Network	1-5
1.5 Completing the Installation	1-5

APPENDIX A SPECIFICATIONS

A.1 Physical Properties.....	A-1
A.2 Network Interface	A-2
A.2.1 Pinout for the S/T-Interface Connector	A-2
A.2.2 Pinout for the U-Interface Connector	A-3
A.3 Environmental Requirements	A-3
A.4 Regulatory Compliance	A-4

APPENDIX B FCC PART 68 - USER'S INFORMATION

INTRODUCTION



Only qualified personnel should perform installation procedures.

Welcome to the Cabletron Systems *SWPIM-BRI Installation Guide*. This manual gives an introduction to the SWPIM-BRI, lists features and capabilities, details the cabling pinouts, and explains how to install the SWPIM-BRI.

The SWPIM-BRI provides S/T-interface (digital) functionality or U-interface (analog) functionality for a host platform designed to receive the SWPIM (Sliding WAN Physical Interface Module) architecture.

USING THIS GUIDE

Read through this guide completely to understand the features and capabilities of the SWPIM-BRI.

A general working knowledge of WAN and Ethernet and IEEE 802.3 data communications networks and their physical layer components is helpful before using the SWPIM-BRI.



The term “host platform” will be used to indicate the device or module, such as the SSR-600 or the HSIM-SSR-600, into which the SWPIM-BRI is installed.

STRUCTURE OF THIS GUIDE

This guide is organized as follows:

This **Introduction** provides preliminary information that will aid in using this manual, lists technology and user's guides that may help the user to set up and manage the SWPIM-BRI, gives an overview of the SWPIM-BRI and its features, and information on how to get help from Cabletron Systems.

Chapter 1, **Installation**, provides instructions on how to install the device into a host platform, and gives the LED indications.

Appendix A, **Specifications**, contains information on functionality and operating specifications, connector pinouts for the SWPIM-BRI, environmental requirements, and physical properties.

Appendix B, **FCC Part 68 - User's Information**, explains the FCC rules for the SWPIM-BRI.

SWPIM-BRI FEATURES

The SWPIM-BRI is installed into any Cabletron Systems product that supports the SWPIM architecture, such as the SSR-600, or the HSIM-SSR-600.

The SWPIM-BRI uses a single RJ48 connector supporting the S/T-interface and the U-interface. There are two different pin assignments and cables for the two interfaces. Refer to Appendix A for the Cabletron Systems part numbers and pin assignments for these cables.

The S/T-interface is provided via a four-wire Integrated Services Digital Network (ISDN) Basic Rate Interface (BRI), while the U-interface is provided via a two-wire ISDN BRI.

The SWPIM-BRI provides support for the transportation of two 64 Kbps Bearer (B) channels and one 16 Kbps Data (D) channel for a total of 144 Kbps. The SWPIM-BRI can be configured by software to select the S/T-interface for terminal equipment (TE) mode or the U-interface for network termination (NT) mode. Refer to the host platform software user's manual for information on how to configure the SWPIM-BRI using software.

The SWPIM-BRI has two LEDs, to indicate link and status conditions. Refer to Chapter 1 for more details.

RELATED MANUALS

The following Cabletron Systems manuals may help the user to set up and manage the SWPIM-BRI:

SSR-600 Installation Guide

HSIM-SSR-600 Installation Guide

6C105 SmartSwitch 6000 Overview and Setup Guide

Ethernet Technology Guide

Cabling Guide

The manuals referenced above can be obtained on the World Wide Web in Adobe Acrobat Portable Document Format (PDF) at the following site:

<http://www.cabletron.com/>

Cabletron Systems applicable software manuals for the SSR-600 and the HSIM-SSR-600 host platforms (Cabletron Routing Software Manuals):

Bridging Configuration Guide

Event Logging System Message Guide

Network Interface Operations Guide

Routing Protocols Reference Guide

Routing Protocols User's Guide

System Software Guide

ClearVISN Routing Configurator User's Guide

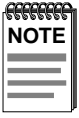
Systems Network Architecture Guide

Quick Reference Guide

DTF (Data Trace Facility) User Guide

DOCUMENT CONVENTIONS

The following conventions may be used in this document:



Note symbol. Calls the reader's attention to any item of information that may be of special importance.



Tip symbol. Conveys helpful hints concerning procedures or actions.



Caution symbol. Contains information essential to avoid damage to the equipment.



Electrical Hazard Warning symbol. Warns against an action that could result in personal injury or death due to an electrical hazard.

GETTING HELP

For additional support related to this device or document, contact Cabletron Systems using one of the following methods:

World Wide Web	http://www.cabletron.com/
Phone	(603) 332-9400
Internet mail	support@cabletron.com
FTP	ftp://ftp.cabletron.com/
Login	<i>anonymous</i>
Password	<i>your email address</i>
<p>To send comments or suggestions concerning this document, contact the Cabletron Systems Technical Writing Department via the following email address: TechWriting@cabletron.com <i>Make sure to include the document Part Number in the email message.</i></p>	

Before calling Cabletron Systems, have the following information ready:

- Your Cabletron Systems service contract number
- A description of the failure
- A description of any action(s) already taken to resolve the problem (e.g., changing mode switches, rebooting the unit, etc.)
- The serial and revision numbers of all involved Cabletron Systems products in the network
- A description of your network environment (layout, cable type, etc.)
- Network load and frame size at the time of trouble (if known)
- The device history (i.e., have you returned the device before, is this a recurring problem, etc.)
- Any previous Return Material Authorization (RMA) numbers

CHAPTER 1

INSTALLATION



Only qualified personnel should install the SWPIM-BRI.

This chapter covers the following items:

- Unpacking the SWPIM-BRI (Section 1.1)
- Installing the SWPIM-BRI into the host platform (Section 1.2)
- A description of the LANVIEW LED indications (Section 1.3)
- Connecting the SWPIM-BRI to the network (Section 1.4)
- What to do once the SWPIM-BRI is installed (Section 1.5)

1.1 UNPACKING THE SWPIM-BRI

Use static electricity precautions when handling the SWPIM-BRI.



Failure to observe static safety precautions could cause damage to the SWPIM-BRI. Follow static safety handling rules and wear the antistatic wrist strap shipped with the SWPIM-BRI.

1. Open the packing box and remove the SWPIM-BRI.



Do not cut the non-conductive bag to remove the device. Damage could result from sharp objects contacting the device or components.

2. Attach the antistatic strap (refer to the instructions in the wrist strap package) before removing the SWPIM-BRI from the antistatic packaging.
3. Verify that the SWPIM-BRI is undamaged. Refer to Getting Help if there is any damage to the device. Do not attempt to install the SWPIM-BRI if it is damaged.

1.2 INSTALLING THE SWPIM-BRI

The SWPIM-BRI can be installed in any available open slot in the host platform. To install the SWPIM-BRI, proceed as follows:

1. You do not need to power down the host platform to install the SWPIM-BRI. Check the host platform software manual to see if desired parameters would be lost from memory upon power down of the host platform.
2. Remove the blank panel covering the slot in the host platform in which the SWPIM-BRI will be installed, by prying it off the faceplate.
3. Ensure that the antistatic wrist strap is attached and employed as recommended.



Observe all precautions to prevent damage from Electrostatic Discharge (ESD).

4. Remove the SWPIM-BRI from the antistatic bag. (Save this bag in the event the device must be removed from the host platform).
5. Hold the SWPIM-BRI with the faceplate facing away (right side up) from the host platform. The 40-pin connector should be facing towards the empty slot, with the wide part of the connector oriented down. See Figure 1-1.
6. Locate the rail guides inside the slot in which the SWPIM-BRI will be installed, as shown in Figure 1-1.
7. Install the SWPIM-BRI in the host platform by aligning the SWPIM-BRI with the rail guides in the host platform and sliding it in. Take care that the SWPIM-BRI slides in straight and properly engages the backplane host connector. Do not force the device.

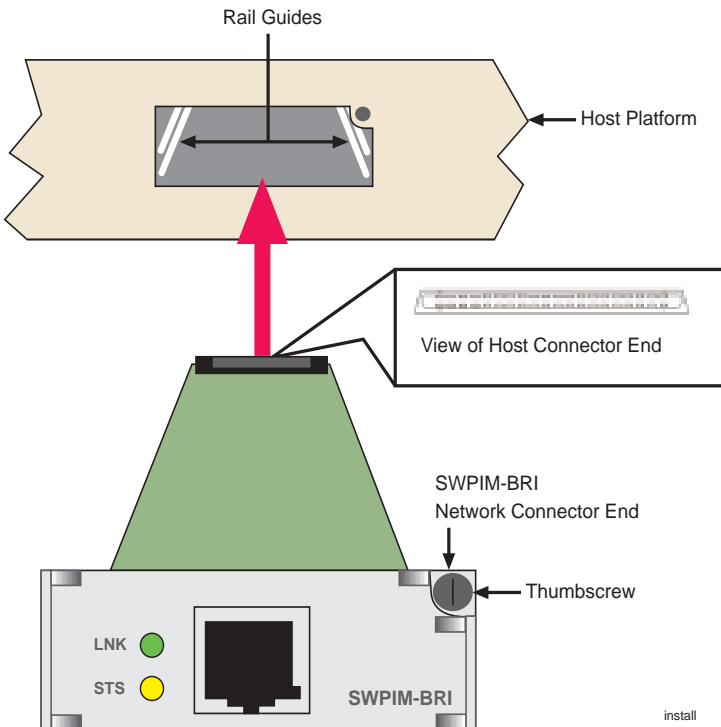


Figure 1-1 Installing the SWPIM-BRI into the Host Platform

8. Fasten the SWPIM-BRI with the thumbscrew.
9. Replace power to the host platform, if necessary. Check to see that the host platform LED indicators go to their normal configuration. If they do not, remove the SWPIM-BRI from the host platform and contact Cabletron Systems.



Do not connect any WAN cables until the SWPIM-BRI has been configured in software. The phone company can shut down a line that has an unconfigured connection on it.

10. The SWPIM-BRI must be configured before the WAN connection is made. Once the SWPIM-BRI has been configured, the host platform must undergo a soft or hard restart in order for the SWPIM-BRI to be recognized and for traffic to pass. Refer to the appropriate software manual to configure the SWPIM-BRI.

1.3 LANVIEW LED INDICATIONS

Refer to Table 1-1 for the link LED indications for the SWPIM-BRI.

Table 1-1 Link LED

Color	Indication
Off	Disabled or Not Configured
Red	No Link
Blinking Red	Failure
Blinking Amber	Transmit or Receive Traffic
Green	Port is Active

Refer to Table 1-2 for the status LED indications for the SWPIM-BRI.

Table 1-2 Status LED

Color	Indication
Off	Normal or Disabled
Blinking Amber	Port in Loopback Test Mode
Green	Active Call (B1 and/or B2 is Active)
Blinking Green	Failure due to Framing Errors

1.4 CONNECTING TO THE NETWORK

Figure 1-2 depicts a typical configuration for the SWPIM-BRI. The Cabletron Systems part number for the cable is 9360005-x, where x is the length of the cable.

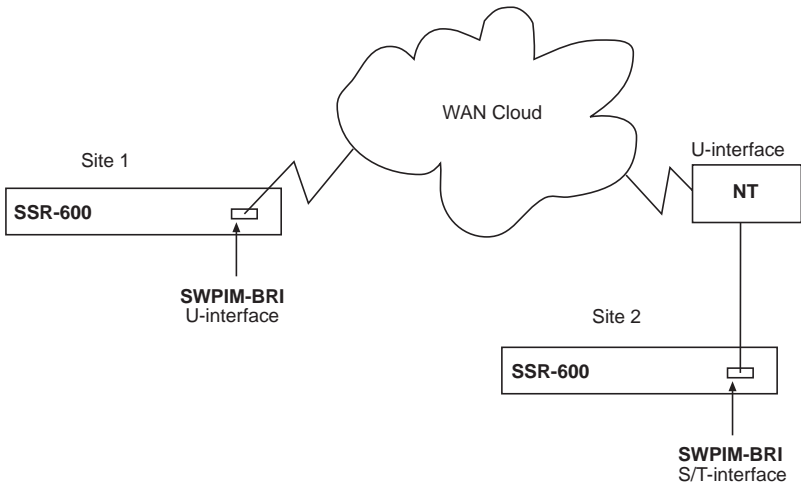


Figure 1-2 Typical Configurations

1.5 COMPLETING THE INSTALLATION

After installing the SWPIM-BRI, the SWPIM-BRI will need to be configured for the network. Refer to the host platform software documentation in order to set up and manage the SWPIM-BRI using the software.

APPENDIX A

SPECIFICATIONS

This section describes the environmental specifications and safety and approval requirements for the SWPIM-BRI. Cabletron Systems reserves the right to change these specifications at any time without notice.

A.1 PHYSICAL PROPERTIES

Dimensions:	1.91 H x 5.40 W x 19.05 D (cm) 0.75 H x 2.125 W x 7.50 D (in)
Weight (Unit):	90.7 g (3.2 oz)
Nominal current draw on +5V supply from host platform:	U-interface: 126.5 mA passing traffic S/T-interface: 135 mA passing traffic
MTBF (Predicted):	3,874,392 hours

A.2 NETWORK INTERFACE

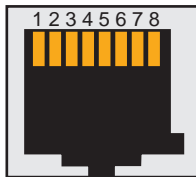
The SWPIM-BRI uses an RJ48 connector for the network port, with two separate pinouts, one for the S/T-interface and the other for the U-interface. The Cabletron Systems Part Number for the cable for both the S/T-interface and the U-interface is 9360005-x, where x is the length of the cable.

A.2.1 Pinout for the S/T-Interface Connector

Table A-1 Pinouts for the S/T-Interface Connection

Pin	Function		Polarity
	Terminal Equipment (TE)	Network Equipment (NE)	
1	No Connection	No Connection	
2	No Connection	No Connection	
3	Transmit	Receive	+
4	Receive	Transmit	+
5	Receive	Transmit	-
6	Transmit	Receive	-
7	No Connection	No Connection	
8	No Connection	No Connection	

The connector for the S/T-interface can be seen in Figure A-1:



strj45

Figure A-1 S/T-Interface RJ48 Pinout

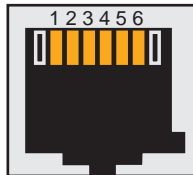
A.2.2 Pinout for the U-Interface Connector

The network interface pin assignments for the U-interface network connector are listed in Table A-2.

Table A-2 Pinouts for the U-Interface Connection

Pin	Signal	Direction
1	No Connection	
2	No Connection	
3	Uline	I/O
4	Uline	I/O
5	No Connection	
6	No Connection	

The connector for the U-interface is shown in Figure A-2:



urj45

Figure A-2 U-Interface RJ48 Pinout

A.3 ENVIRONMENTAL REQUIREMENTS

- Operating Temperature: +5° to +40°C (41° to 104°F)
- Non-operating Temperature: -30° to +90°C (-22° to 194°F)
- Operating Humidity: 5% to 90% (Non-condensing)

A.4 REGULATORY COMPLIANCE

This equipment meets the following safety and electromagnetic compatibility (EMC) requirements:

Safety	UL 1950, CSA C22.2 No. 950, 73/23/EEC, EN 60950, IEC 950, EN 60825
Electromagnetic Compatibility (EMC)	FCC Part 15, CSA C108.8, 89/336/EEC, EN 55022, EN 61000-3-2, EN 61000-3-3, EN 55024, AS/NZS 3548, VCCI V-3
Telecommunications	FCC CFR47 Part 68, CS-03

APPENDIX B

FCC PART 68 - USER'S INFORMATION

The following instructions are provided to ensure compliance with the Federal Communications Commission (FCC) Rules, Part 68.

1. This device must only be connected to the ISDN Basic Rate network behind an FCC Part 68 registered channel service unit. Direct connection is not allowed.
2. Before connecting your unit, you must inform the telephone company of the following information:

Port ID	REN/SOC	FIC	USOC
SWPIM-BRI	6.0P	N/A (XD)	N/A (XD)

3. If the unit appears to be malfunctioning, it should be disconnected from the telephone lines until you learn if your equipment or the telephone line is the source of the trouble. If your equipment needs repair, it should not be reconnected until it is repaired.
4. If the telephone company finds that the equipment is exceeding tolerable parameters, the telephone company can temporarily disconnect service, although they will attempt to give you advance notice if possible.
5. Under the FCC Rules, no customer is authorized to repair this equipment. This restriction applies regardless of whether the equipment is in or out of warranty.
6. If the telephone company alters their equipment in a manner that will affect use of this device, they must give you advance warning so as to give you the opportunity for uninterrupted service. You will be advised of your right to file a complaint with the FCC.
7. The attached affidavit must be completed by the installer.

8. In the event of equipment malfunction, all repairs should be performed by our Company or an authorized agent. It is the responsibility of the users requiring service to report the need for service to our Company or to one of our authorized agents.

Service can be obtained at Cabletron Systems Technical Support:

Address: Cabletron Systems, Inc.
35 Industrial Way
Rochester, NH 03867-0505

Phone: (603) 332-9400

Internet mail: support@cabletron.com

**AFFIDAVIT FOR THE CONNECTION OF
CUSTOMER EQUIPMENT TO 1.544 MBPS AND/OR
SUBRATE DIGITAL SERVICES**

For the work to be performed in the certified territory of

Telco's name: _____

State of: _____

Country of: _____

I, _____, of _____
(Name of Authorized Representative) (Customer Name)

_____, _____
(Customer's Address) (Telephone Number)

being duly sworn, state:

I have responsibility for the operation and maintenance of the terminal equipment to be connected to _____ Subrate digital services. The terminal equipment to be connected complies with Part 68 of the Commission's rules except for the encoded analog content and billing protection specifications. With respect to encoded analog content and billing protection:

- I attest that all operations associated with the establishment, maintenance and adjustment of the digital CPE with respect to encoded analog content and encoded billing information continuously complies with Part 68 of the FCC's Rules and Regulations.
- The digital CPE does not transmit digital signals containing encoded analog or billing information which is intended to be decoded within the telecommunications network.
- The encoded analog and billing protection is factory set and is not under the control of the customer.

Appendix B: FCC Part 68 - User's Information

I attest that the operator(s) maintainer(s) of the digital CPE responsible for the establishment, maintenance and adjustment of the encoded analog content and billing information has (have) been trained to perform these functions by successfully completing one of the following: Check appropriate one(s).

- a. A training course provided by the manufacturer/grantee of the equipment used to encode analog signals; or
- b. A training course provided by the customer or authorized representative, using training materials and instructions provided by the manufacturer/grantee of the equipment used to encode analog signals; or
- c. An independent training course (e.g. trade school or technical institution) recognized by the manufacturer/grantee of the equipment used to encode analog signals; or
- d. In lieu of the proceeding training requirements, the operator(s) maintainer(s) is (are) under the control of a supervisor trained in accordance with _____ above.

I agree to provide _____ with proper documentation
(Telco's Name)

to demonstrate compliance with the information as provided in the proceeding paragraph, if so requested.

_____ (Signature)

_____ (Title)

_____ (Date)

Subscribed and sworn to me this _____ day of _____, 19____.

(Notary Public)

My commission expires: _____

Free Manuals Download Website

<http://myh66.com>

<http://usermanuals.us>

<http://www.somanuals.com>

<http://www.4manuals.cc>

<http://www.manual-lib.com>

<http://www.404manual.com>

<http://www.luxmanual.com>

<http://aubethermostatmanual.com>

Golf course search by state

<http://golfingnear.com>

Email search by domain

<http://emailbydomain.com>

Auto manuals search

<http://auto.somanuals.com>

TV manuals search

<http://tv.somanuals.com>