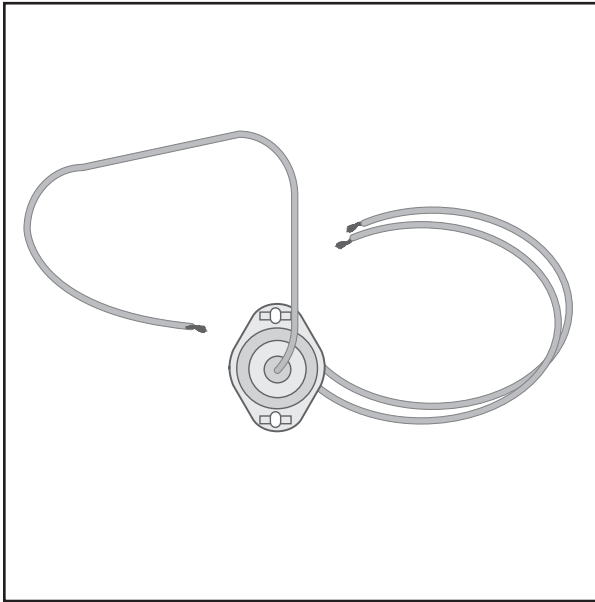




The Com-Pak Plus Manual Reset

REPLACEMENT INSTRUCTIONS



MODELS

The Com-Pak Plus

C202, C152, C122, C102, C072,
C151, C101, C051, C208

The Com-Pak Twin Plus

CT402, CT302, CT408,

Note:

Now is the perfect opportunity to clean your heater. See original product Owner's Guide or go to www.cadetco.com and find detailed cleaning instructions under **Other Links** for the Com-Pak Plus.

TOOLS REQUIRED:

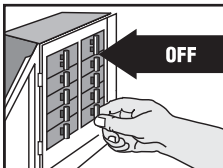
- Small Flathead Screwdriver
- Wire Connectors

- Phillips Screwdriver
- Wire Stripper

- Wire Cutter
- Crimping Tool

- Cable or Wire Ties
- Needle Nose Pliers

IMPORTANT INSTRUCTIONS



⚠ WARNING

Turn the electrical power off at the electrical panel board (circuit breaker or fuse box) and lock or tag the panel board door to prevent someone from turning on power while you are working on the heater. Failure to do so could result in serious electrical shock, burns, or possible death.

IF YOU ARE UNCOMFORTABLE WORKING WITH ELECTRICAL APPLIANCES, UNABLE TO FOLLOW THESE GUIDELINES, OR DO NOT HAVE THE NECESSARY EQUIPMENT, CONSULT A LICENSED ELECTRICIAN.

1. It is important that you verify power has been turned off and no power is going to the heater before proceeding. Circuit breakers are often not marked correctly and turning the wrong breaker off could mean electricity is flowing to the heater, even if the heater does not appear to be working.
2. Once you verify the power has been turned off correctly, proceed to the next step.
3. Please see your product Owner's Guide for additional installation, operation and maintenance instructions for both reset and heater. Owner's Guides may be downloaded at www.cadetco.com.

SAVE THESE INSTRUCTIONS

Installation Instructions

1. Remove knob (if applicable) and screws to remove grill.
2. Remove grill.
3. Remove heatbox from wall can by loosening screw at top.
4. Unwiring
 - A. Remove insulated wire connectors that connect heatbox to wall can.
 - B. Cut as many wire ties on back of heater as necessary for easier accessibility.
 - C. Cut reset wires coming out of lower 5/16" pass through hole on back of heatbox. (See Figure 1)
5. Turn heater upward, remove screw at the bottom of face cover, just above thermostat location.
6. Lift face from bottom and slide over tab on top of box. Set motor and element assembly aside.
7. Turn face cover so reset limit and wires are facing you. Carefully unclamp contact point tabs using a flathead screwdriver (See Figure 2).
8. Twist tabs that reset approximately 90 degrees. This will allow the reset to easily slip out of place (See Figure 3).
9. Bend both tabs to original position. Snap new reset in place.
10. Place copper wire in contact point tabs as shown in Figure 2. Clamp wire in place with pliers, being careful not to damage, kink or cut copper wire. Be sure capillary tube (limit tubing) lays flat against cover. (See Figure 2)
11. Feed wires back through 5/16" hole of motor and element assembly, making sure to take out all slack. (See Figure 1)
12. Replace face cover over tab on top. Be sure to hold wires and snap in place.

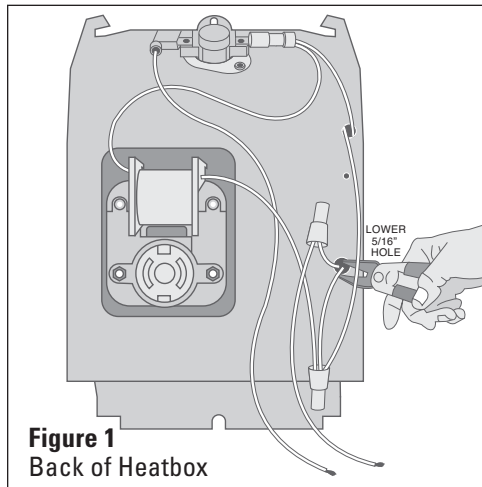


Figure 1
Back of Heatbox

13. Tighten securing screw on bottom of face by thermostat or hole location.
14. Wiring
 - A. Connect new Reset wires to lead wires previously cut, using wire connectors.
 - B. Fasten wiring with wire ties so all wires fit neatly to the side of the motor and are out of the way. Cut off wire tie ends.
 - C. Reconnect supply lead wires to heater securely, using wire connectors. Double check connections for tightness.
15. Reinstall heater into wall can tabs first, then attach screw.
16. Attach grill.
17. Turn power on and test heater.

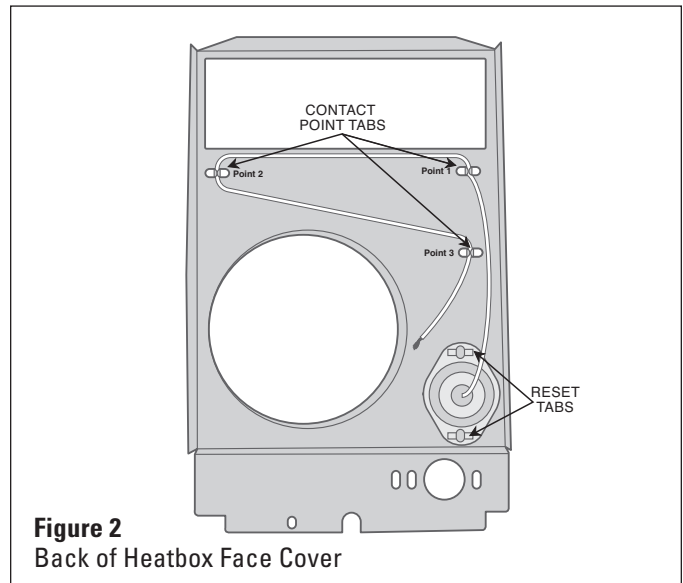


Figure 2
Back of Heatbox Face Cover

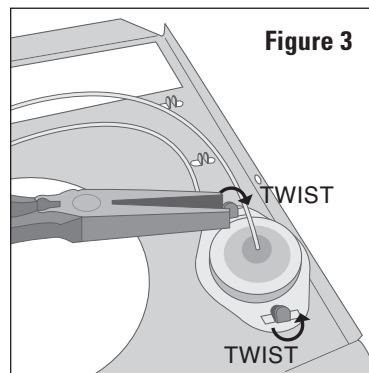


Figure 3

Warranty

LIMITED 90 DAY WARRANTY: Cadet will repair or replace any Cadet part found to be defective within 90 days from the date of purchase. This warranty only applies to parts purchased or installed after the expiration of any other applicable warranty period.

These warranties do not apply:

1. Damage occurs to the product through improper installation or incorrect supply voltage;
2. Damage occurs to the product through improper maintenance, misuse, abuse, accident, or alteration;
3. The product is serviced by anyone other than Cadet;
4. Refurbished products;
5. If the date of manufacture of the product cannot be determined;
6. If the product is damaged during shipping through no fault of Cadet.
7. CADET'S WARRANTY IS LIMITED TO REPAIR OR REPLACEMENT AS SET OUT HEREIN. CADET SHALL NOT BE LIABLE FOR DAMAGES SUCH AS PROPERTY DAMAGE OR FOR CONSEQUENTIAL DAMAGES AND/OR INCIDENTAL EXPENSES RESULTING FROM BREACH OF THESE WRITTEN WARRANTIES OR ANY EXPRESS OR IMPLIED WARRANTY.
8. IN THE EVENT CADET ELECTS TO REPLACE ANY PART OF YOUR CADET PRODUCT, THE REPLACEMENT PARTS ARE SUBJECT TO THE SAME WARRANTIES AS THE PRODUCT. THE INSTALLATION OF REPLACEMENT PARTS DOES NOT MODIFY OR EXTEND THE UNDERLYING WARRANTIES.

REPLACEMENT OR REPAIR OF ANY CADET PRODUCT OR PART DOES NOT CREATE ANY NEW WARRANTIES.

9. These warranties give you specific legal rights, and you may also have other rights which vary from state to state. Cadet neither assumes, nor authorizes anyone to assume for it, any other obligation or liability in connection with its products other than as set out herein.

If you believe your Cadet part is defective, please contact Cadet Manufacturing Co. at 360-693-2505, during the warranty period, for instructions on how to have the repair or replacement processed. Warranty claims made after the warranty period has expired will be denied. Products returned without authorization will be refused.

Parts and Service

Visit <http://support.cadetco.com> for information on where to obtain Parts or Service.



Reduce-Reuse-Recycle

This product is made primarily of recyclable materials. You can reduce your carbon footprint by recycling this product at the end of its useful life. Contact your local recycling support center for further recycling instructions.

Free Manuals Download Website

<http://myh66.com>

<http://usermanuals.us>

<http://www.somanuals.com>

<http://www.4manuals.cc>

<http://www.manual-lib.com>

<http://www.404manual.com>

<http://www.luxmanual.com>

<http://aubethermostatmanual.com>

Golf course search by state

<http://golfingnear.com>

Email search by domain

<http://emailbydomain.com>

Auto manuals search

<http://auto.somanuals.com>

TV manuals search

<http://tv.somanuals.com>