

# Canon

## CLC 4000



**GRAPHIC ARTS  
SYSTEMS**



# CLC 4000

## GRAPHIC ARTS SYSTEMS



### THE CANON CLC 4000— MAXIMUM VALUE, MINIMAL COST

You need a heavy-duty solution for your growing color output volumes, but finding the right combination of value, speed, and performance has been difficult. Until now. Meet the new Canon CLC 4000, an economical solution to meet both your expanding entry-level production needs *and* your budget.

Pound for pound and dollar for dollar, no other networked color printing system offers so much versatility, so much value. With a fast 40-page-per-minute output speed, improved media flexibility, and professional finishing, the powerful combination of the Canon CLC 4000 and companion ColorPASS-Z6000 Color Server is the best value on the market. Specifically designed to maximize file processing productivity and print engine performance at minimal cost, this dynamic duo delivers better results, better control, and the opportunity to broaden the scope of services you offer.

Today, your customers are more demanding, end-users more particular. As applications become more sophisticated, you need updated solutions with the power to meet shorter deadlines and rising expectations—without blowing your budget. In the CLC 4000, Canon has implemented new technologies that enable you to keep pace with the evolving needs of your growing production-level environment and offer new services to meet a broader spectrum of customer applications. Next-generation ColorPASS-Z6000 technology transforms the CLC 4000 into a truly affordable print-on-demand solution. It provides the processing speed—plus the latest job and color management tools—to meet your exacting specifications for ideal color results, including the execution of variable image printing.

For **corporate reprographic departments**, this means the CLC 4000 provides a new level of power to meet peak-period demands while maintaining the highest possible image quality.

For **print-for-pay establishments**, this means stepping up from overtaxed mid-volume systems. The CLC 4000 provides the reliability and capacity to meet any customer request.

For **graphic arts professionals**, this means access to precision color controls like ColorWise® 3 and the Fiery® Graphic Arts Package\* for results approaching offset quality.

Canon, the leader in digital color solutions for 16 years, brings you more features, more flexibility, and more value for your technology dollar—the CLC 4000.

\*Available as standard or optional, depending on the selected ColorPASS model.

## THE PERFECT COMBINATION OF VERSATILITY AND VALUE: THE CLC 4000



It's all about the data. Installing the CLC 4000 as a full-color networked printing system is where the real value lies. In fact, over 90% of all CLC systems are sold connected to a Canon color server—and for good reason.

Put cost-effective, full-color, print-on-demand capabilities at your fingertips. The CLC 4000 is flexible—it may be connected to one of several Canon ColorPASS color server solutions, or T/R Systems™ *MicroPress*®<sup>▲</sup> for Canon. The latest addition to the Canon ColorPASS family, the new ColorPASS-Z6000, enables users to achieve new levels of functionality and productivity beyond the scope of previous entry-level production controllers.

Featuring a powerful Pentium® processor and Windows® XP operating system, Canon ColorPASS color servers support all the latest CLC 4000 features and accessories, and drive the engine at its rated speed to make short work of the most complex files. Their super-fast CPUs rapidly process large files with sophisticated graphics. The optional Advanced Controller Kit for use with the ColorPASS-Z6000 allows you to connect a keyboard, monitor, and mouse for pinpoint control right at the system.



### Simple Network Integration

The first step is simple network integration. NetWise™ 3 makes CLC 4000 installation a plug-and-play process. Its open architecture enables automatic switching between TCP/IP, AppleTalk®, and IPX/SPX™ for seamless integration into any network scheme. For environments requiring truly high-speed data commu-

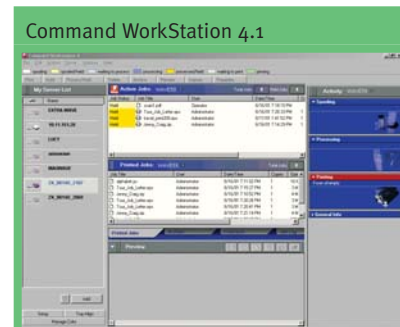


nications, the new ColorPASS controllers come standard with gigabit Ethernet capabilities.

NetWise 3 even allows you to send files as E-mail attachments to printers from any remote location. Need to capture or incorporate existing hard-copy images into electronic files? Fiery Remote Scan lets you easily scan multipage hard-copy documents for integration into your digital workflow.

### Powerful Job Management

Speaking of control, Canon ColorPASS color servers feature Command WorkStation 4.1 for Windows and the new Command WorkStation LE 4.0 for Mac, powerful job management software solutions that allow you to monitor and manage all jobs and servers from a single screen. The improved UniDriver for Windows provides user-customizable shortcuts, pop-up menu information, and draggable watermarks. The Job Properties window of Command WorkStation now features UniDriver-like functionality to manage job programming through a single screen. Manipulate files with PitStop software, and translate reader spreads into paginated booklet form with DocBuilder Pro. Preview jobs before printing, and archive them afterward for future use without re-RIPing.



▲ Check with your local Canon-authorized Dealer for availability.



### New Revenue Opportunities

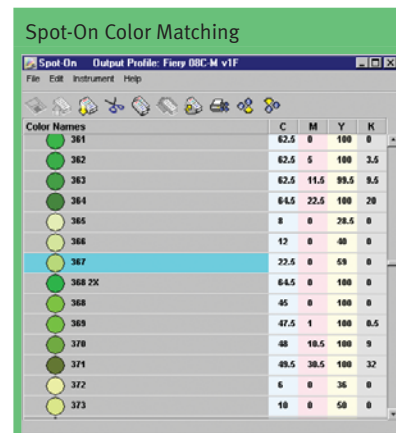
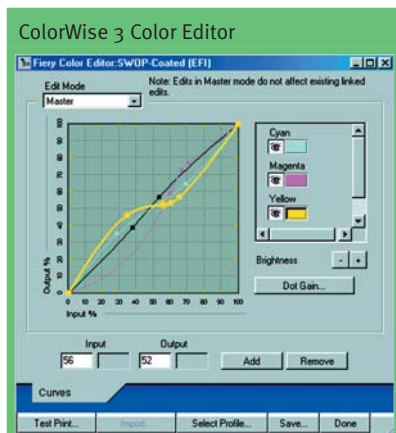
Need the versatility to generate customized documents for one-to-one marketing? ColorPASS technology lets you offer services you never could before. Add more value to your customer relationships through cost-effective, full-color variable data printing. ColorPASS color servers support the Fiery FreeForm™ 2 VDP utility, as well as PPML— the industry-standard language for executing variable data printing tasks without proprietary hardware or applications.

### Advanced Color Controls

Both novice and color-critical users alike will appreciate the full spectrum of color management and calibration tools provided by ColorWise 3. Offering great out-of-the-box color, this feature-rich color management software provides advanced users with a wide range of capabilities, such as downloading ICC profiles of other printing devices and editing or customizing color curves. These help achieve consistent color from all applications and platforms.

Plus, users have access to advanced utilities like Auto Gray and ColorCal®, scanner-based calibration tools ideal for environments where color consistency is critical. Aren't they all?

Color-intensive production environments can further enhance job control and color accuracy with Fiery's Graphic Arts Package, a set of optional power tools for color professionals that delivers precise control for any color-critical application. Use the Spot-On® feature to modify CMYK values to closer match their PANTONE® equivalents; select Auto Trapping to ensure proper registration and fit of adjacent colors; control Halftone dot values; generate Unlimited Separations to proof jobs beyond traditional four-color process printing; simulate paper stocks to judge the effect media will have on inks; and place jobs in Hot Folders to simplify workflows using predefined settings.





### Cluster Printing Solution

Need greater bandwidth to support document production over several machines? T/R Systems *MicroPress* for Canon clusters multiple color and black-and-white solutions into a powerful production output management system using one controller. Execute job splitting to speed completion while retaining access to a number of advanced job and color management capabilities that streamline processes in production-level environments.

### Outstanding Performance

After your job is processed, and all color and document settings have been made to your specifications, rest assured that every image will leap off the page, thanks to Canon's legendary image quality. Finer, Brighter (FB) Toner provides a color space larger than that of most competitive devices and commercial presses, so it can achieve subtle blends, smooth gradations, and crisp text. Automatic Image Refinement technology boosts CLC 4000 output resolution to the equivalent of 800 x 400 dpi for the sharpest possible images, while Automatic Registration Adjustment self-calibrates for improved image registration.

But CLC 4000 value doesn't stop there. When it's time to put images to paper, the CLC 4000 really shines. Its four-way, 4,850-sheet standard paper supply offers expanded

size and weight capacities so you can execute any job in-house. Feed 12" x 18" heavyweight and coated stocks up to 253gsm through the new 3,500-sheet Paper Deck-R1 or the 250-sheet Stack Bypass. Both 550-sheet paper drawers are user-adjustable for sizes up to 11" x 17" and in weights of up to 105gsm. Plus, its Stackless Automatic Duplex technology allows you to produce booklets and other two-sided documents on heavyweight media up to 163gsm from the Paper Deck. For manual duplex jobs, the optional Stack Bypass Alignment Tray provides improved front-to-back registration.

### Hard-copy Reproduction

Sometimes, you'll need to reproduce existing hard-copy originals. Leverage the CLC 4000's 400 x 400 dpi full-color scanner as a 100-sheet Automatic Document Feeder with the optional RDF-E3. Productively scan one- or two-sided originals as large as 11" x 17" at 40 pages per minute. A complete spectrum of color and image manipulation features is at every user's fingertips for the accurate reproduction or modification of existing hard-copy images. And as always, every CLC 4000 copy delivers brilliant color images and reveals fine details—even skin tones that other solutions find hard to reproduce.

Offset Stacker-B1



High-capacity Stacker TS-100



Catch Tray



### Professional Finishing

When you're ready to finish the job, no one comes close to matching Canon's finishing capabilities. For environments that utilize off-line finishing equipment, two Stacker options are available. Users can let long jobs run unattended with the 2,500-sheet High-capacity Stacker TS-100, while the new 3,000-sheet Offset Stacker-B1 is designed for users who require offset capabilities.

The Nagel Finisher is an ideal fit for growing production environments. With DocBuilder Pro imposing pages on the front end, and the powerful combination of the Nagel Booklet-maker and Trimmer on the back end, you'll have a complete solution for the professional production of

saddle-stitched and trimmed booklets up to 64 pages (16 sheets). And, because the Nagel Finisher handles stock weights greater than the duplexing capacity of the CLC 4000, you can use it as an off-line finishing device for manual duplex jobs produced on the CLC 4000, or to complement other printing equipment.

From the start of your job—scanning, imposing, managing color—straight through to the finished saddle-stitched, trimmed, and folded booklets, the CLC 4000 is the most versatile, affordable solution for your growing production-level needs. And it's from Canon, the name you've come to trust for industry-leading color output solutions.

Nagel Finisher



# Technologies Designed for Growing Production Environments

## Connectivity Options

- Advanced color/document management utilities include ColorWise Pro Tools and DocBuilder Pro™\*
- Optional Advanced Controller Kit and Fiery's Graphic Arts Package are now available for the ColorPASS-Z6000—a first for entry-level color server solutions
- Support for mixed media types in the same job
- Track progress in real time with the EFI® Job Monitor utility
- Command WorkStation™ 4.1 offers new LE 4.0 version for Macintosh®
- Job previews, image scaling, booklet creation, and more

\*Available as standard or optional, depending on the selected ColorPASS model.

## Built for the Long Run

- 40-ppm output speed
- Improved handling of heavy media at speeds almost 100% faster than previous CLC models
- Maximum volume of 150,000 prints per month
- A number of CLC 4000 internal enhancements all come together to allow for the fast, on-demand production of full-color documents on heavyweight media



## Media Versatility

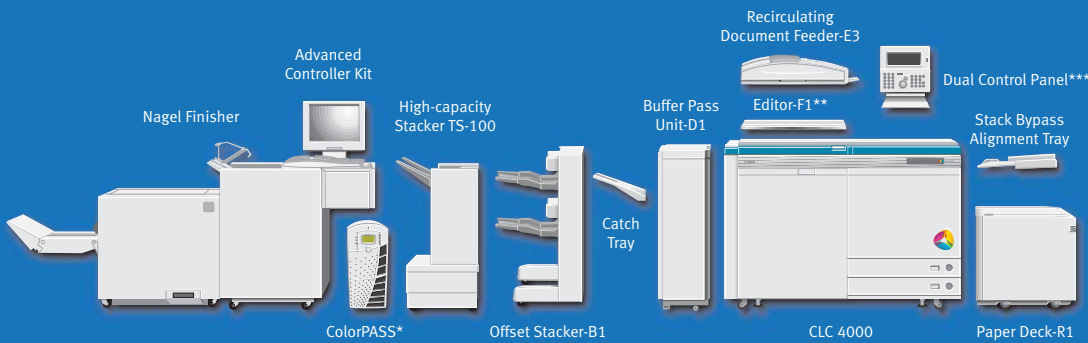
- Versatile four-way paper supply provides a total 4,850-sheet paper capacity, with Dual 550-sheet Paper Drawers and a 250-sheet Stack Bypass
- New 3,500-sheet Paper Deck-R1 employs Canon's Air Assist technology for reliable feeding of coated media† up to 253gsm and as large as 12" x 18"

†Refer to Specialty Laser Media guide for compatibility.

## Unsurpassed Finishing

- The new Offset Stacker-B1\*\* is an exciting new addition to Canon's family of finishing options
- Its 3,000-sheet capacity makes set separation fast by stacking printed sets in an offset manner for easy transfer to off-line finishing devices

\*\* Check with your local Canon-authorized Dealer for availability. Offset capability for printed documents only.



# CLC 4000

## CLC 4000 Specifications

Technology:	Color Laser Electrophotographic Sheets, Books, Solid Objects
Acceptable Originals:	11" x 17"
Max. Original Size:	11" x 17"
Max. Output Size:	12" x 18"
Copy Sizes	
Drawer-feeding:	Letter (8-1/2" x 11") Letter-R (11" x 8-1/2") Statement-R (8-1/2" x 5-1/2") Legal (8-1/2" x 14") Ledger (11" x 17")
Paper Deck-R1 (User-adjustable):	Letter (8-1/2" x 11") Ledger (11" x 17") 12" x 18"
Stack Bypass:	Statement to 12" x 18"
Magnification	
Standard Mode:	100%
Preset Reduction:	25%, 50%, 64%, 73%, 78%
Preset Enlargement:	121%, 129%, 200%, 400%
Zoom Mode:	25% - 400% (in Increments of 0.1% and 1%)
Copy/Print Speeds	
Letter:	40 cpm (Full 4-color) 40 cpm (B/W)
Ledger:	20 cpm (Full 4-color) 20 cpm (B/W)
First-copy Time:	14 Seconds
Warm-up Time:	Less than 9 Minutes
Resolution:	400 x 400 dpi (8-bit), Equivalent Appearance of 800 x 400 dpi (Color Automatic Image Refinement)
Halftone:	256 Gradations
Paper-feeding:	Two Front-loading Paper Drawers Plus Stack Bypass, Standard (2 x 550 + 250) Paper Deck-R1: 3,500 Sheets (Accepts Letter, Ledger, or 12" x 18")

Acceptable Paper Weights	
Drawer:	20 lb. to 28 lb. Bond (75gsm - 105gsm) and Transparency
Paper Deck-R1:	17 lb. Bond to 140 lb. Index (64gsm - 253gsm)
Bypass:	20 lb. Bond to 140 lb. Index (75gsm - 253gsm) and Transparency
Max. Paper Capacity:	4,850 Sheets
Multiple Copies:	1 to 999
Duplexing:	Automatic/Manual
Power Source (Two):	208V/240V, 15A, 60Hz
Dimensions (H x W x D):	39.4" x 66.6" x 28.7" (1,000mm x 1,692mm x 730mm)
Weight:	1,217 lb. (552kg)
<b>Recirculating Document Feeder-E3 (Optional)</b>	
Acceptable Original Sizes:	Statement to Ledger
Original Tray Max. Capacity:	100 Sheets
Original Tray Paper Weight	
Top Tray:	20 lb. to 32 lb. Bond
SSDF:	10 lb. to 110 lb. Index
Power Source:	115V, 60Hz
Power Consumption:	120W or Less
Dimensions (H x W x D):	6-7/8" x 25-3/8" x 21-1/4" (174mm x 643mm x 539mm)
Weight:	52.9 lb. (24kg)
<b>Editor-F1** (Optional)</b>	
Area Designation:	Up to 200 Areas
Features:	Framing, Blanking, Area Editing
<b>Offset Stacker-B1 (Optional)<sup>▲</sup></b>	
Number of Trays:	2
Acceptable Paper Sizes:	Statement to 12" x 18"

Acceptable Paper Weights:	17 lb. Bond to 140 lb. Index (64gsm - 253gsm)
Tray Capacity (Each Tray):	1,500 Sheets (20 lb. Bond)
Shift Stacking:	For PDL Printed Documents Only

### High-capacity Stacker TS-100 (Optional)

Media Types:	Plain Paper, Bond, Cover, Canon-approved Transparencies, Coated Media
Acceptable Paper Sizes:	Width—Min. 5.5" Max. 12.0" Length—Min. 8.5" Max. 18.0"
Acceptable Paper Weights:	Up to 140 lb. Index/ 93 lb. Cover/250gsm No Offsetting
Capacity:	Up to 2,500 Sheets (Letter)
Docking:	Uses Magnetic Latching and In-line Casters
Electronic Interface with Copier:	None
Power Requirements:	115V, 60Hz
Dimensions (H x W x D):	33-1/2" x 20" x 19" (851mm x 508mm x 483mm)
Weight:	Approx. 70 lb. (31.75kg)

\* Requires optional IF Board-E1. Please contact your local Canon-authorized Dealer for ColorPASS options.

\*\* Requires optional ED Board-C1.

\*\*\* The CLC 4000 provides easy access from a seated position for wheelchair users, or users with limited upper-body mobility.

▲ Check with your local Canon-authorized Dealer for availability.

**IMPORTANT:** Whether coated paper can be used depends not only on the paper weight, but also on other factors such as the coating material and paper stiffness. For this reason, only use coated paper recommended for the CLC 5100/4000. Canon is not responsible for any damage incurred to the machine through the use of any other type of coated paper.

ColorWise, Fiery, EFI, Spot-On, and ColorCal are registered trademarks of Electronics for Imaging, Inc. in the U.S. Patent and Trademark Office and certain other foreign jurisdictions. NetWise, Command WorkStation, DocBuilder Pro, and Fiery FreeForm are trademarks of Electronics for Imaging, Inc. Pentium is a registered trademark of Intel Corporation. Windows is a registered trademark of Microsoft Corporation in the United States and/or other countries. Macintosh and AppleTalk are registered trademarks of Apple Computer, Inc. MicroPress is a registered trademark, and T/R Systems is a trademark of T/R Systems, Inc. IPX/SPX is a trademark of Novell, Inc. PANTONE is a registered trademark of Pantone, Inc. Canon, ColorPASS, and Canon Know How are registered trademarks, and the GENUINE logo is a trademark of Canon Inc. IMAGEANYWARE is a service mark of Canon U.S.A., Inc. All other terms and product names may be trademarks or registered trademarks of their respective owners, and are hereby acknowledged.

All specifications are subject to change without notice.

Federal Law prohibits copying of certain documents. Violators may be subject to penalties. We suggest that you check with your own legal counsel. Canon U.S.A., Inc. and Canon Canada, Inc. intend to cooperate with Law Enforcement agencies in connection with claims of unauthorized copying.

**Canon** KNOW HOW®

1-800-OK-CANON  
www.usa.canon.com

Canon U.S.A., Inc.  
One Canon Plaza  
Lake Success, NY 11042

0039W986

1003-CLC4000-75M

PRINTED ON RECYCLED PAPER IN THE U.S.A.





## Free Manuals Download Website

<http://myh66.com>

<http://usermanuals.us>

<http://www.somanuals.com>

<http://www.4manuals.cc>

<http://www.manual-lib.com>

<http://www.404manual.com>

<http://www.luxmanual.com>

<http://aubethermostatmanual.com>

Golf course search by state

<http://golfingnear.com>

Email search by domain

<http://emailbydomain.com>

Auto manuals search

<http://auto.somanuals.com>

TV manuals search

<http://tv.somanuals.com>