

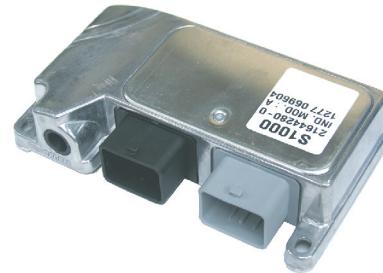


# SERVICE BULLETIN

BULLETIN	ISSUED	MODEL(S) AFFECTED	SUBJECT(S)
<b>SBM01-05</b>	11/8/01	2001 X440s, 2002 X440s, See list on page 5., And, units installed with the MC1000 Update Kit (P/N 913-5002053)	1 - MC1000 operating code 2 - Hard starting and cold start



**MC500**  
Engine Control Unit (ECU)



**MC1000**  
Engine Control Unit (ECU)

**CONDITION :** This service bulletin addresses two conditions identified individually below. Both conditions concern the engine management system of affected vehicles.

(1) Field reports of intermittent engine stalling have been attributed to early releases of the MC1000 ECU operating code. The operating code is something like the operating system in an ordinary personal computer or PC (example: Windows 95). The operating code should not be confused with the calibration file; that file contains mapping and vehicle specific calibrations.

(2) Field reports indicate hard starting and/or difficult cold starting experiences. These experiences have been attributed to the cold starting “strategies” programmed in early releases of the calibration files on affected units. A calibration file is something like the software running on a particular operating system (example: MS Excel or Word).

**SOLUTION :** (1) For condition 1 above, a revised version of the MC1000 operating code has been developed and must be installed on all affected models. A special MS-DOS program has been developed to install the revised code file to the vehicle ECU.

(2) A new calibration file has been developed and should be installed into the vehicle ECU after the revised operating code (Condition (1) above) has been installed.

This service bulletin includes step-by-step instructions to correct both conditions in the same “work procedure.”

**PARTS :** The kit (P/N 912-5001986) including PC software programs, a data cable, and user manuals is necessary to perform the instructions of this service bulletin. The kit has been shipped to dealerships. The software installation is a prerequisite to performing any work. Consult the kit documentation for more details.

**If you have any questions about this service bulletin, call toll free 1-800-MOTO-USA.**

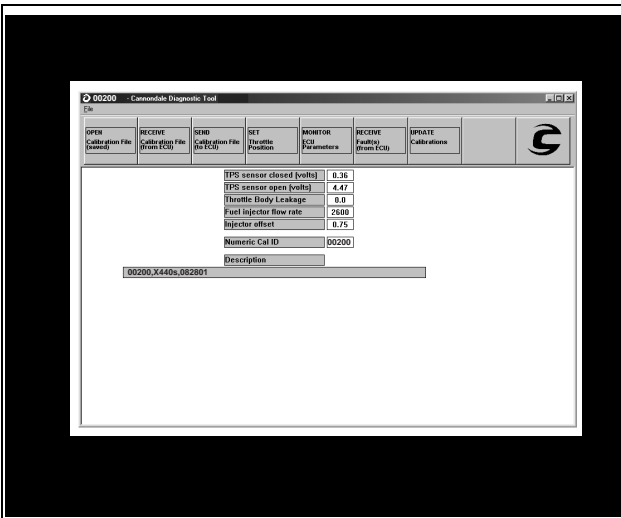
# INSTRUCTIONS

connector can be released easily using only your finger tips.

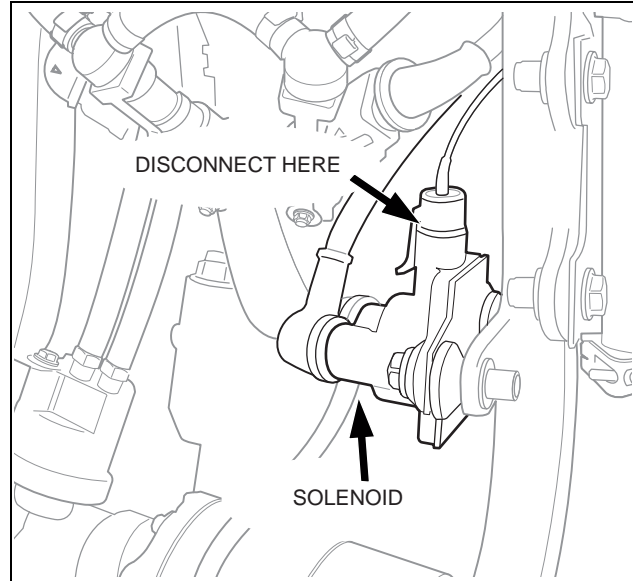
## NOTE :

Before starting this procedure, we strongly recommend that you read the Cannondale Diagnostic Tool Manual (P/N 912-5001985) included with kit (P/N 912-5001986). The manual contains important background information and explanations that will be helpful to know before you attempt this simple, but very technical procedure. We also recommend that the service technician performing the work have moderate PC skills.

1. From the Windows START menu select *DealerCal.exe* from the Cannondale Diagnostic and Maintenance program group. The Cannondale Diagnostic Tool main menu will open. See example below.



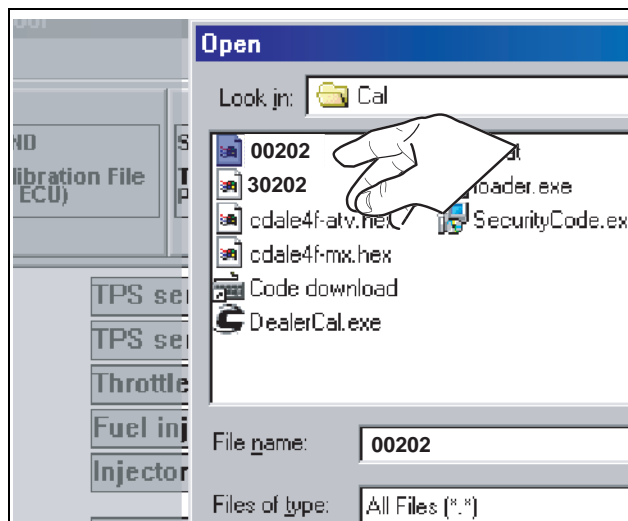
2. Connect the data cable to the vehicle and PC. See the Cannondale Diagnostic Tool Manual for details.
3. Disconnect the vehicle starter solenoid harness lead. The solenoid is mounted on the inner side of the left engine rail just below the fuel filter mount. In the illustration below, the radiator is shown removed for clarity; the



4. Press the vehicle engine start button briefly. This will activate the engine management circuits. The green LED on the data cable block should be lit. Look at the block to confirm that it is on. If you read the Cannondale Diagnostic Tool Manual, you would have learned that this LED stays on while the ECU is active and that the ECU remains active for only 2 minutes if communications are not occurring- then it shuts down automatically. If the light goes out anytime during this procedure, just press the engine start button again to turn it on.
5. Click the **OPEN Calibration file (saved)** button in the Cannondale Diagnostic Tool main menu.

Then, select the file named 00202 located in

the C:\Program Files\Cal directory. You may have to navigate (use explorer) to find it.

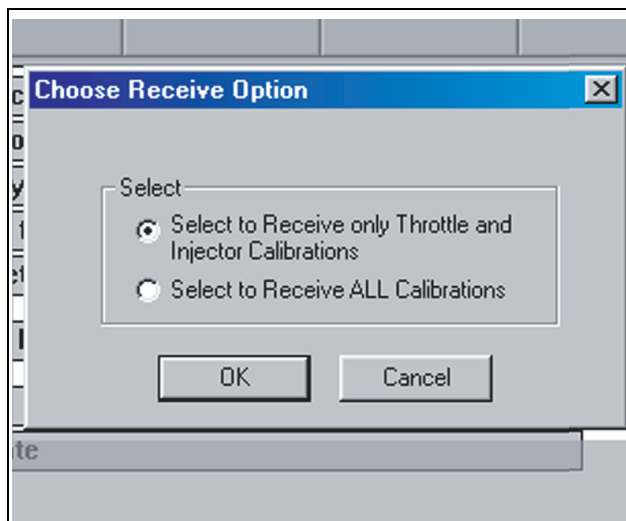


6. Make sure "00202" is displayed at Numeric Cal ID. If it is not, repeat the previous step.
7. Make sure the green LED on the data cable block is still lit. If its not press the engine start button to turn it on.

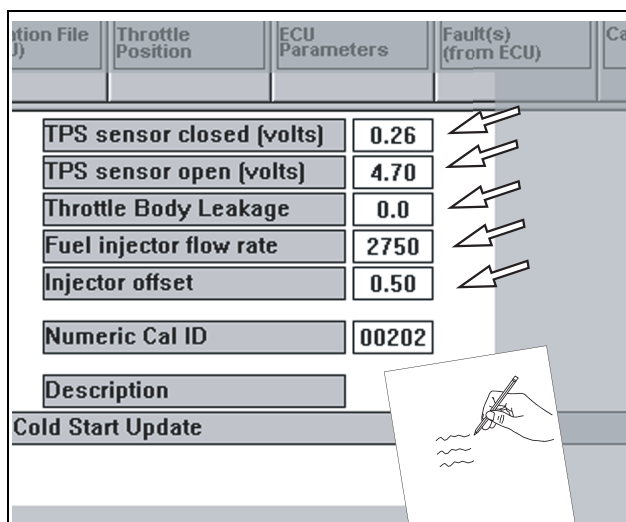
Now, click the **RECIEVE Calibration file (from ECU)** button.

When the Choose Receive Option window opens select "Select to Receive only Throttle and Injector Calibrations" and click OK. This option reads only the TPS sensor closed (volts), TPS open (volts), Throttle Body Leakage, Injector flow rate, and Injector offset variables from the current calibration file in the ECU and does not read the calibration file. These will be needed for the new calibration file installation later because the operating code installation wipes them from the ECU memory. Because the program is reading this relatively small set of vehicle

variables and not the complete calibration file, the transfer of data occurs quickly.

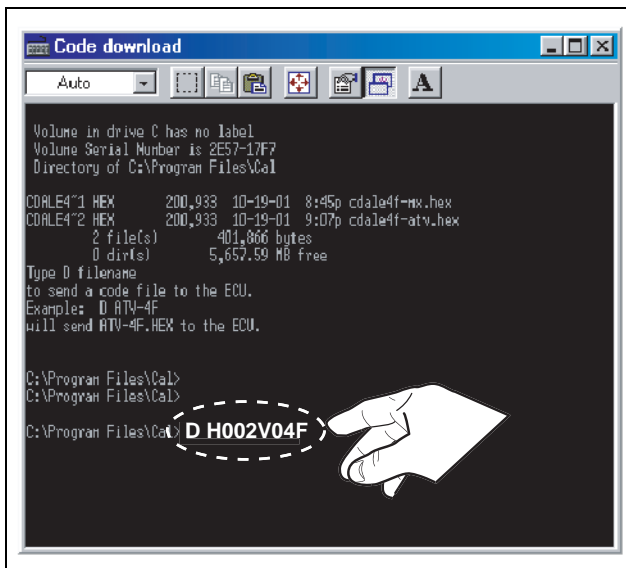


8. The vehicle's variables have now been merged with the new calibration file (00202) that you opened in the program in the first few steps. Write down the values displayed in the main menu (see arrows below). When you write them down you are creating a kind of backup just in case you have computer difficulties (accidentally closing the Cannondale Diagnostic Tool). If you don't have a problem, the next few steps will transfer this information to the ECU following the operation code transfer. But if you do encounter a problem, the Cannondale Diagnostic Tool enables you to input them to the ECU. See Updating Calibrations and Setting the Throttle Body in the tool manual.

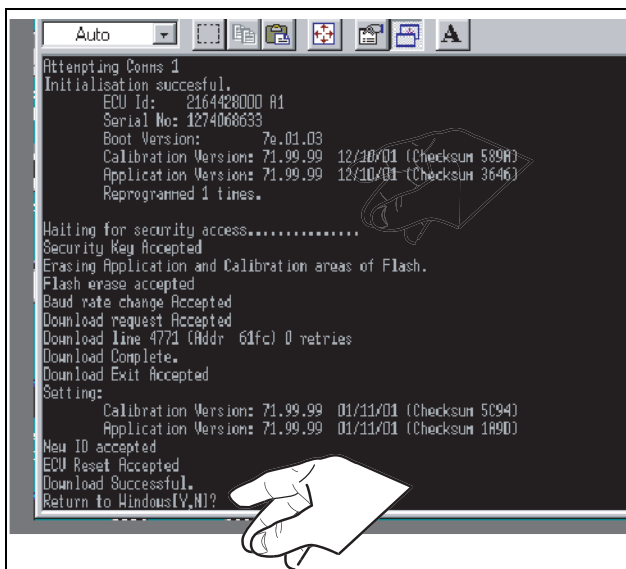


9. Press the engine stop button.

10. From Windows START button (lower left corner of the computer screen) select the Cannondale Diagnostic and Maintenance program group and select *Code Download*. An MS-DOS program window will open.
11. At the prompt type: **D H002V04F** but do not press ENTER yet. D means "download" and H002v04f is the name of the new operating code file that the program will transfer to the ECU in the coming steps.



12. Have an assistant PRESS AND CONTINUE TO HOLD the engine start button on the vehicle.
13. As your assistant holds the engine start button, press the ENTER key on your computer - you will see live data transfer information in the MS-DOS window.



14. When the transfer complete message displays in the lower area of the program window, your assistant can release the engine start button.

Type Y and the MS-DOS window will disappear and the Cannondale Diagnostic Tool main menu should be visible again.

15. Click the **SEND Calibration file (to ECU)** button. The new calibration file together with the vehicle specific variables read from the ECU before the operating code installation will be installed into the ECU.

When the send complete window displays, click OK.

16. Reconnect the starter solenoid. Make sure the connector is latched properly.
17. Disconnect the data cable from the vehicle.
18. Reinstall removed components.
19. Test engine operation.

# MODEL(S) AFFECTED

The following is a list of Vehicle Identification Numbers (VIN) of units affected by this service bulletin:

5B6BC11C02B000003  
5B6AA11C21B000004  
5B6BC11C22B000004  
5B6BC11C62B000006  
5B6BC11C82B000007  
5B6BC11C82B000010  
5B6BC11CX2B000011  
5B6BC11C32B000013  
5B6BC11C52B000014  
5B6BC11C72B000015  
5B6BC11C92B000016  
5B6BC11C02B000017  
5B6BC11C22B000018  
5B6BC11C42B000019  
5B6BC11C22B000021  
5B6BC11C42B000022  
5B6AA11C61B000023  
5B6BC11C62B000023  
5B6BC11C82B000024  
5B6BC11CX2B000025  
5B6BC11C12B000026  
5B6BC11C52B000028  
5B6AA11C51B000031  
5B6BC11C52B000031  
5B6AA11C71B000032  
5B6BC11C72B000032  
5B6BC11C72B000032  
5B6BC11C92B000033  
5B6BC11C02B000034  
5B6BC11C22B000035  
5B6BC11C42B000036  
5B6BC11C62B000037  
5B6AA11C81B000038  
5B6BC11C82B000038  
5B6BC11CX2B000039  
5B6BC11C82B000041  
5B6BC11CX2B000042  
5B6BC11C12B000043  
5B6BC11C32B000044  
5B6BC11C72B000046  
5B6BC11C92B000047  
5B6BC11C22B000049  
5B6BC11C92B000050  
5B6BC11C22B000052  
5B6BC11C42B000053  
5B6BC11C62B000054  
5B6BC11C82B000055

5B6AA11CX1B000056  
5B6BC11CX2B000056  
5B6BC11C52B000059  
5B6BC11C12B000060  
5B6BC11C32B000061  
5B6BC11C52B000062  
5B6BC11C72B000063  
5B6BC11C92B000064  
5B6BC11C02B000065  
5B6AA11C21B000066  
5B6BC11C42B000067  
5B6BC11C62B000068  
5B6BC11C82B000069  
5B6BC11C42B000070  
5B6BC11C62B000071  
5B6BC11C82B000072  
5B6BC11CX2B000073  
5B6BC11C12B000074  
5B6BC11C32B000075  
5B6BC11C52B000076  
5B6BC11C72B000077  
5B6BC11C72B000077  
5B6BC11C92B000078  
5B6BC11C02B000079  
5B6BC11C72B000080  
5B6BC11C92B000081  
5B6BC11C22B000083  
5B6BC11C42B000084  
5B6BC11C62B000085  
5B6BC11C82B000086  
5B6BC11CX2B000087  
5B6AA11C11B000088  
5B6BC11C12B000088  
5B6BC11CX2B000088  
5B6AA11C31B000089  
5B6BC11C32B000089  
5B6BC11CX2B000090  
5B6BC11C12B000091  
5B6BC11C32B000092  
5B6BC11C52B000093  
5B6BC11C72B000094  
5B6BC11C02B000096  
5B6AA11C21B000097  
5B6AA11C21B000097  
5B6BC11C22B000097  
5B6AA11C41B000098  
5B6BC11C42B000098  
5B6AA11C61B000099  
5B6AA11C91B000100  
5B6BC11C92B000100  
5B6BC11C92B000100  
5B6BC11C02B000101  
5B6BC11C02B000101  
5B6BC11C22B000102  
5B6BC11C42B000103  
5B6BC11C62B000104  
5B6BC11C82B000105  
5B6BC11CX2B000106  
5B6BC11C12B000107

5B6BC11C32B000108  
5B6BC11C52B000109  
5B6AA11C11B000110  
5B6BC11C12B000110  
5B6BC11C32B000111  
5B6AA11C51B000112  
5B6BC11C52B000112  
5B6BC11C72B000113  
5B6BC11C92B000114  
5B6BC11C02B000115  
5B6BC11C22B000116  
5B6BC1142B0000117  
5B6BC11C62B000118  
5B6BC11C82B000119  
5B6AA11C41B000120  
5B6BC11C42B000120  
5B6BC11C62B000121  
5B6BC11C82B000122  
5B6BC11CX2B000123  
5B6BC11C12B000124  
5B6BC11C32B000125  
5B6BC11C52B000126  
5B6BC11C72B000127  
5B6BC11C02B000129  
5B6BC11C72B000130  
5B6BC11C72B000130  
5B6BC11C91B000131  
5B6BC11C02B000132  
5B6BC11C22B000133  
5B6BC11C42B000134  
5B6BC11C62B000135  
5B6BC11C82B000136  
5B6BC11CX2B000137  
5B6BC11C12B000138  
5B6BC11CX2B000140  
5B6BC11C12B000141  
5B6AA11C31B000142  
5B6AA11C71B000144  
5B6AA11C01B000163  
5B6AA11C21B000164  
5B6BC11C82B000170  
5B6AA11C11B000172  
5B6AA11C41B000182  
5B6AA11C51B000191  
5B6AA11C31B000206  
5B6AA11C51B000207  
5B6AA11C71B000211  
5B6AA11C61B000216  
5B6AA11C41B000229  
5B6AA11C21B000231  
5B6AA11C51B000238  
5B6AA11C41B000263  
5B6AA11C41B000280  
5B6AA11C11B000298  
5B6AA11C01B000311

## Free Manuals Download Website

<http://myh66.com>

<http://usermanuals.us>

<http://www.somanuals.com>

<http://www.4manuals.cc>

<http://www.manual-lib.com>

<http://www.404manual.com>

<http://www.luxmanual.com>

<http://aubethermostatmanual.com>

Golf course search by state

<http://golfingnear.com>

Email search by domain

<http://emailbydomain.com>

Auto manuals search

<http://auto.somanuals.com>

TV manuals search

<http://tv.somanuals.com>