



Canon imageRUNNER 2020/2020i

BUYERS LABORATORY INC. Lab Test Report

A Comprehensive BLI Laboratory Evaluation

Canon imageRUNNER 2020/2020i 20 PPM Copier ■ Printer ■ Scanner ■ Fax



Test duration: Two months, including a 50,000-impression durability test.



Reliability	Excellent
Multitasking	Good
Administrative Utilities	Very Good
Feedback to Workstations	Fair
Ease of Network Setup	Good
Print Drivers	Good
Applications Compatibility	Excellent
Scan Functions	Good
Print/Copy Quality	Excellent/Very Good
Print/Copy Productivity	Fair/Good
Ease of Use	Excellent
Feature Set	Good
Toner Yield	Good
Cost per Page	Excellent
Value	Excellent

Maximum monthly duty cycle: 50,000 impressions.

BLI's recommended monthly duty cycle for peak usage: Up to 25,000 impressions.

BLI RECOMMENDATION

ALSO INSIDE

- ▶ Test Procedures
- ▶ Specifications
- ▶ Certificate of Reliability

Ratings scale:
Excellent, Very Good, Good, Fair and Poor.

An excellent value, the Canon imageRUNNER 2020i proved to be an exceptional overall performer in BLI's rigorous two-month evaluation, displaying excellent multitasking capabilities, above-average image quality and very good ease of use. Geared to workgroups and small businesses, this highly reliable 20-ppm device, which supports up to ledger-size output, provides standard copying, scanning and PC and network printing, as well as optional faxing (walk-up, PC and Internet). Contributing to the imageRUNNER 2020i's very good ease of use are a touch screen and standard automatic duplexing, which are not offered on most competitive models. In addition, this model, which has the highest standard memory capacity (256 MB) for competitive devices, offers full-color document distribution capabilities. Because of its outstanding overall performance and excellent value, BLI highly recommends the Canon imageRUNNER 2020i for offices in need of a multifunctional product for monthly volumes of up to 25,000 impressions.

LAB TEST



PERFORMANCE OVERVIEW

+, – and ○ represent positive, negative and neutral attributes, respectively.

RELIABILITY

EXCELLENT

- + The Canon imageRUNNER 2020i completed BLI's two-month, 50,000-impression durability test without misfeeding or requiring service of any kind.
- The unit's drum yield is lower than the average for competitive models.

MULTITASKING

GOOD

- + Offering good multitasking capabilities, the imageRUNNER 2020i enables users to program up to four copy jobs.
- Programming of the next copy job can begin as soon as the pages of the previous copy job have been scanned.
- + A prompt appears on the display letting users know the system is ready to scan the next copy job.
- The unit does not offer an interrupt function.
- Jobs are processed on a first-in, first-out basis; one function cannot be established as a priority function.

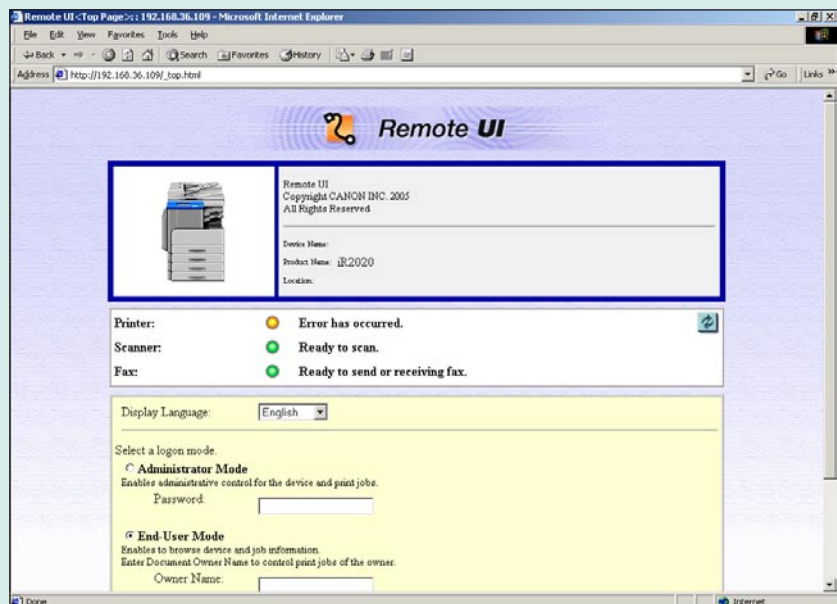
ADMINISTRATIVE UTILITIES

VERY GOOD

- Administrative utilities for the imageRUNNER 2020i include the unit's Remote User Interface (its embedded Web page), which can be accessed from users' desktops, and imageWARE Enterprise Management Console, which is HTML-based. imageWARE Enterprise Management Console enables discovery of Canon and non-Canon devices on the network and also enables viewing all devices or groups of devices that meet specified criteria. Administrators can choose to view network devices in a list view or in a map view that shows their locations in the enterprise.
- + The Remote User Interface is very easy to navigate and offers a broad range of functionality. It allows remote configuration of network settings and authentication, viewing counters for every function (copy, print, send,

receive) and remote programming and management of addresses for e-mail, fax and Internet fax, as well as management of user mailboxes.

- The Remote User Interface also provides status information such as the approximate amount of available paper. However, information on the remaining toner is vague (i.e., “available”).
- + The Web utility provides extensive information on jobs via the job status tab. Information includes user name, status of the job and number of pages. There are separate logs for print jobs, copy jobs, send jobs and receive faxes.
- Plug-ins for HP Web Jetadmin are available for Canon products, so users of this popular management utility can use it to manage Canon devices as well.
- + Department ID mode enables administrators to control access to the imageRUNNER 2020i, setting passwords and limits by function (print, copy, scan) for individual users and departments.
- + Department ID mode, which supports up to 1,000 department codes, also enables users to display and print a list outlining how much paper was used by each department. In addition, it allows administrators to specify whether to accept or reject print and network scan jobs from computers that do not correspond to any registered department ID.



Remote UI



FEEDBACK TO WORKSTATIONS

FAIR

- There are no pop-up messages or icon alerts to notify end users of conditions such as toner low, paper out, etc. Users must proactively seek the information on the Web page to see device or print job status.
- + imageWARE Enterprise Management Console can be configured to send pop-up error messages to one or more administrators (not end users).
- The Print Monitor utility (which provides pop-up messages indicating a job has been sent) requires the administrator to create a port using Canon's LPR 2.0, which is a bit awkward because a standard TCP/IP port is already created when the imageRUNNER 2020i is installed. LPR 2.0 provides pop-up job status messages that indicate that a job has been sent. Since the messaging is limited, BLI recommends using the automated installation routine.
- Information regarding the amount of remaining paper and the size of paper is displayed in the driver when clicking on a paper source, provided Canon's automatic installation is used; however, to obtain accurate information, the user must first select to update status information, which requires numerous steps (12 mouse clicks). Further, it was observed that if a port is created manually using Canon's LPR 2.0 port creation utility (which is required to run the Job Monitor utility), the information on available paper status from the print driver was inaccurate, even after updating status information. Because users may not realize that the paper size or capacity information displayed on the image of the device in the driver could be inaccurate, they could make mistakes that result in wasted paper and productivity.

EASE OF NETWORK SETUP

GOOD

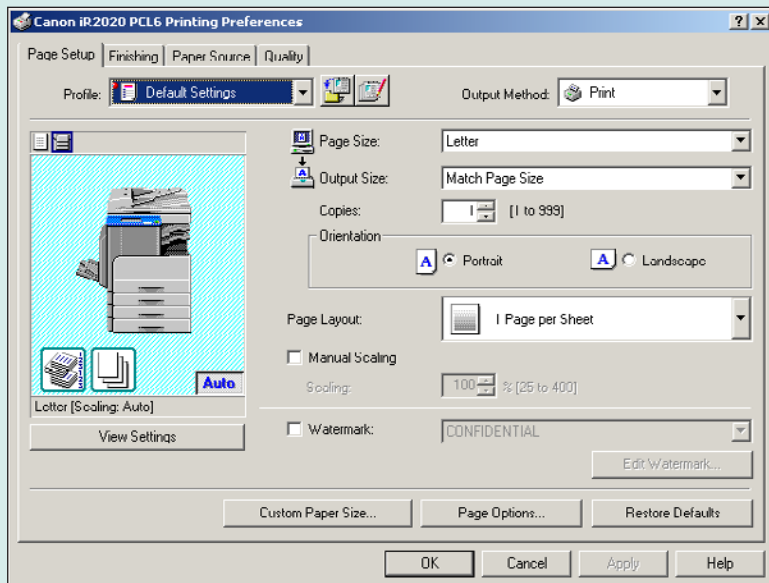
- + Configuration of network settings can be easily performed, either from the control panel or remotely via the Remote User Interface.
- + The Canon imageRUNNER 2020i is bundled with a CD that contains the print drivers and the LPR 2.0 utility. An installation utility built into the drivers' CD automatically locates the machine and creates the port.
- + The print drivers do not auto-launch upon insertion of the CD into the drive. Installation requires users to navigate the CD-ROM to locate the setup file for each driver before they can follow the automated process. Installing the PCL driver requires 13 clicks and requires a separate installation from the PostScript and UFR II LT drivers.
- + The PCL driver can detect any configured accessories on the unit, eliminating the need for the administrator to manually specify configured accesso-

ries, though the process is not completely automatic. Once the drivers are installed, the administrator must enter the IP address of the unit, select two-way communication in the driver and set the driver to search for any configured accessories.

PRINT DRIVERS

GOOD

- The imageRUNNER 2020i was tested with the standard PCL 5e/6 driver; the UFR II LT driver is also standard. The drivers support Windows 98, 2000, Me, XP, Server 2003 and Novell NetWare. The PCL driver also supports Windows NT 4.0 and the UFR II LT driver supports Mac OS X or higher.
- + Most of the features used for typical print jobs are accessible on the main screen.
- + The well-designed drivers are graphical, enabling point-and-click selection of paper drawers.
- + The drivers offer a good feature set that includes proof print and the ability to save the settings for frequently used jobs.
- + The unit offers simultaneous RIP and print, with printing beginning while pages are still being processed.
- + File size remained the same when printing multiple sets, regardless of whether “collate” was selected from the properties screen of the driver or from the print screen within an application.



PCL Print Driver

LAB TEST

**APPLICATIONS COMPATIBILITY****EXCELLENT**

+ No problems were experienced with any of the test files used in the applications compatibility tests. Units are tested for compatibility on Windows XP platforms with Microsoft Word 2000, Microsoft PowerPoint 2000, Microsoft Excel 2000, Adobe PageMaker 7.0, Adobe Photoshop 6.0 and Adobe Acrobat 6.0 using 25 application test files, which contain text, graphics, halftone images, tables, etc., enabling BLI technicians to evaluate memory usage, file processing, font rendering and grayscale capability.

SCAN FUNCTIONS**GOOD**

- The imageRUNNER 2020i offers 600-x-600-dpi scanning, which was easy to use and performed well in testing.
- Users can scan documents to file, e-mail and Internet fax.
- With the unit's scan-to-e-mail capability, users can scan and send documents in TIFF, PDF, PDF (compact) and JPEG format. Users can scan to multiple e-mail addresses, which can be programmed from the Web utility and the control panel, in a single session.
- + The unit can scan color documents.
- + Tested scan speed for a black-and-white document, at 23.42 originals per minute, is faster than the unit's rated engine speed.

PRINT/COPY QUALITY**EXCELLENT/VERY GOOD**

- + Print output produced by the imageRUNNER 2020i is excellent overall, earning ratings of Excellent for text, line art and solids and Very Good for halftones.
- + Text, line art and solids in copy mode received Excellent ratings, while halftone range was rated Very Good and halftone pattern was rated Good.
- In both print and copy mode, text was sharp and dark with fully formed characters and smooth curves and lines and no toner overspray. Solids were also dark and displayed consistent coverage. Closely spaced fine lines were distinct and of consistent thickness. Halftone fill was smooth and displayed no banding in print mode and minimal banding in copy mode.

PRINT/COPY PRODUCTIVITY

FAIR/GOOD

- The unit's performance in the job stream evaluation is substantially below the average for competitive models.
- The imageRUNNER 2020i's print productivity is competitive when printing multiple sets in both simplex and duplex modes.
- Although the unit's copy efficiency is below average for competitive units in 1:1 mode, it's competitive in 1:2 and 2:2 modes.
- First-copy time from both the platen and the document feeder are among the slowest for competitive models.

EASE OF USE

EXCELLENT

- + The imageRUNNER 2020i features a well-designed control panel that incorporates a large (3-1/2" x 4-3/4"), easy-to-read LCD display that is adjustable for brightness via a dial on the control panel. Unlike with some manufacturers, the imageRUNNER 2020i's control panel provides a consistent look and feel with the rest of Canon's product line. The control panels of other Segment 1 models usually differ from those of higher-speed models in the product line.
- + Unlike the large majority of competitive models, the imageRUNNER 2020i has a touch screen, which makes it easier to navigate than models that have control panels with hard keys.
- The control panel lacks a help key.



Canon imageRUNNER 2020i Control Panel

LAB TEST



- + Though not all of the features required for typical copy jobs can be programmed from the main screen, they are selectable from the main screen and, when selected, bring the user to another screen where the settings can be programmed. The keys are well-labeled and BLI test technicians found the menu system easy to navigate.
- + The job list on the control panel offers extensive information for print, copy, fax, and Internet fax and jobs currently being processed.
- Loading paper into the drawers is easy. The paper drawers have a sliding width guide and a length guide that has to be removed and replaced; BLI prefers a sliding length guide. However, the standard paper drawers do not automatically detect the size of paper loaded in them, so users must change the paper size in the drawers and at the control panel.
- Procedures for replacing the toner are simple, although a bit awkward because the user must remove the seal while inserting the toner cartridge into the device, otherwise the toner will spill.
- + Removing misfeeds was easy. Although no step-by-step instructions are provided, a graphic and text message on the display indicate the misfeed location.
- + The drum is not exposed when removing misfeeds from the unit.

FEATURE SET

VERY GOOD

- This model is available in two configurations: the imageRUNNER 2020 and the imageRUNNER 2020i. The main differences between the two models is that the imageRUNNER 2020 does not offer scanning, which is standard on the imageRUNNER 2020i. Other differences include standard memory capacity (128 MB versus 256 MB) and duplexing (optional versus standard).
- The imageRUNNER 2020i offers a competitive standard paper capacity of two 250-sheet drawers.
- The unit's maximum paper capacity of 1,080 sheets and bypass capacity of 80 sheets are below the average for competitive models.
- + The unit's standard memory capacity of 256 MB of RAM is higher than the average for competitive models; in fact, it's the highest. Though it's non-upgradable, it is nevertheless higher than the average maximum memory capacity for models in this group.
- The unit's standard RADF has a capacity (50 sheets) that's slightly higher than the average for comparably equipped models.



- + Unlike most competitive models, the imageRUNNER 2020i offers automatic duplexing as a standard feature.
- + In addition to the features that would be expected for a unit in this range, the imageRUNNER 2020i offers 100 copy control codes, a choice of languages for the control panel (English, French, Korean, Portuguese or Spanish) and the ability to feed different size originals.
- Walk-up and PC faxing are available as options. Fax features include a 33.6-Kbps modem with JBIG compression, 500 autodial destinations (including 60 one-touch keys), broadcasting, timers, error-correction mode and the ability to serve as a transfer hub.
- + Unlike most Segment 1 models, the imageRUNNER 2020i offers finishing options. They include an internal finisher that can top-corner staple up to 50 sheets (an optional finisher tray that provides an additional output tray is also available) and an inner two-way tray, which was provided with the test unit, that provides collation when stapling is not required.
- The unit features Canon's RAPID Fusing Technology, which according to the company, helps speed warm-up times and significantly helps reduce energy consumption.

SECURITY/ACCESSIBILITY

NOT RATED

- + With Department ID mode, administrators can control access to the imageRUNNER 2020i by setting passwords and limits by function (print, copy, scan) for individual users and departments.
- + The Canon imageRUNNER 2020i offers standard MAC filtering and IP address filtering, which allows administrators to limit which users and which workstations can access the unit.
- + USB block can prohibit unauthorized access by blocking connections via the USB port.
- + An administrator can enable or disable specific device protocols to minimize unwanted communication.
- + Memory lock mode allows received faxes to be stored to memory, where they can be viewed or printed.
- + An optional Braille kit, which improves access to copy and fax functions for users with visual impairments, contains transparent Braille labels that affix to each hard key on the control panel except for the numeric keys.



TONER YIELD

GOOD

- The tested toner yield of the imageRUNNER 2020i is slightly below the average for Segment 1 units.

VALUE

EXCELLENT

- + When equipped with the optional finisher, the imageRUNNER 2020i is priced substantially lower than the average for comparably equipped competitive models. In addition, the unit's supplies cost per page is lower than the average for competitive models. In fact, it's among the lowest.



SUPPORTING TEST DATA

Test Environment

This product was tested in BLI's 10,000-square-foot test lab, in an environment monitored by a Honeywell Temp/RH chart recorder, which replicates typical office conditions.

Test Equipment

BLI's dedicated test network, consisting of Windows NT 4.0, 2000 and Microsoft Exchange servers, Windows 2000 and XP workstations, 10BaseT/100BaseTX network switches and CAT5 cabling.

Test Duration

Products are tested for two months, five weeks of which consists of a durability test during which the product is run at its manufacturer-rated maximum monthly duty cycle, with 50 percent of the test volume comprised of copy jobs and 50 percent comprised of print jobs. BLI's daily test usage is designed to replicate real-world use over an eight-hour workday, and as such includes a mix of various-size documents, simplex and duplex modes, and a mix of short, moderate and long run lengths, and on/off cycles, throughout the day. The durability evaluation also includes testing of the document feeder/scanner for an additional 10 percent of the monthly maximum volume, evenly divided over the course of the test.

Tested Configuration

Base unit, plus optional inner two-way tray and 2 x 250-sheet cassette feeding kit.

Test Procedures

The test methods and procedures employed by BLI in its lab testing include BLI's proprietary procedures and industry-standard test procedures, including a BLI-developed variation of ASTM's 1318-90 Test Method for Determination of Productivity using Electrostatic Copy Machines. In addition to a number of proprietary test documents, BLI uses an industry-standard Katun test original for evaluating black image quality and test suites from Quality Logic to evaluate applications compatibility. In addition to a visual observation, color print quality is tested using the ANSI standard IT8 Color Test Target, which is read using the Minolta CM503I Spectrophotometer, and samples are analyzed using the CIE XY Chromaticity Diagram. In addition, density of black and color output is measured using an X-Rite 428 Densitometer. Georgia-Pacific Spectrum DP 20-lb. bond is used in the tests, 10 percent of which is recycled paper containing 30 percent post-consumer content. Image quality is tested using Georgia-Pacific Printing Paper (95 brightness, 22-lb. bond).

Buyers Laboratory Inc. ■ 20 Railroad Avenue ■ Hackensack, NJ 07601 ■ USA ■ (201) 488-0404

Michael Danziger
CEO

Lynn Nannariello
Senior Editor

Carl Schell
Associate Editor

Pia Beddiges
Manager of Field Testing

Mark Lerch
COO

Mark Young
Senior Editor, Solutions

Ben Curry
Research Editor

Ken Nardone
Technical Manager, Field Testing

Anthony F. Polifrone
Managing Director

Marlene Orr
Printer Industry Analyst

Marc Bussanich
Technical Analyst

Anthony Marchesini
IT Director

Daria M. Hoffman
Managing Editor

Tracie Hines
Associate Editor

Camille Dendtler
Research Manager

T. R. Patrick
Art Director

George Mikolay
Associate Editor

Pete Emory
Manager of Laboratory Testing

RELIABILITY

PMs/Malfunctions	Service Required	Meter Count (Impressions)	Impressions Between Service
Meter count (beginning of test)		0	
End of test period		50,000	
Total Misfeeds/Misfeed Rate	0/Not applicable		
Service Calls	0		
PMs	0		
Total Service Calls (including PMs)	0		

MULTITASKING

Multitasking Evaluation

Primary Function	Secondary Function	PRINT	SCAN	COPY
PRINT		Yes	Yes	Yes
SCAN		Yes	Yes	Yes
COPY		Yes	Yes	Yes

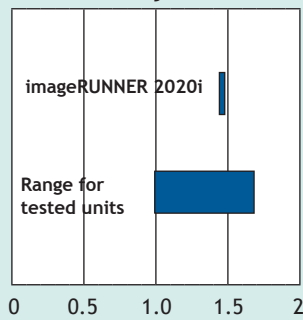
NOTE: A "Yes" indicates that the user can initiate the secondary function while the primary function is taking place and that no further user intervention will be required for the secondary function to take place.

In addition to a single-user multitasking test, which evaluates a unit's ability to initiate or perform one function while another function is already in progress (see chart above), BLI also tests a multifunctional product's ability to handle multiple jobs that would be likely to stack up in a multi-user networked environment.

IMAGE QUALITY

Print Quality	
Text	Excellent
Line Art	Excellent
Halftone Pattern	Very Good
Halftone Range	Very Good
Solids	Excellent

Print density



Print density:

1.43 to 1.49

Density for units in this class tested to date:

0.98 to 1.69

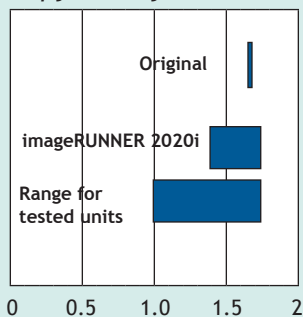
Measurements are based on four readings corresponding to four different solid black locations on the output. The higher the density reading, the darker the image.

Halftone range:

Halftone output was visible from the 2% to 96% dot-fill levels, with distinct transitions between most levels and consistent coverage within levels.

Copy Quality	
Text	Excellent
Line Art	Excellent
Halftone Pattern	Good
Halftone Range	Very Good
Solids	Excellent

Copy density



Density of original:

1.65 to 1.69

Density of copy:

1.38 to 1.45

Range for tested units:

0.99 to 1.75

Halftone range:

Halftone output was visible from the 15% dot-fill level (which is the minimum coverage level on the original) to the 100%

level, with distinct transitions between most levels and consistent coverage within levels.

Measurements are based on eight readings corresponding to eight different solid black locations on the output. The higher the density reading, the darker the image.

PRODUCTIVITY

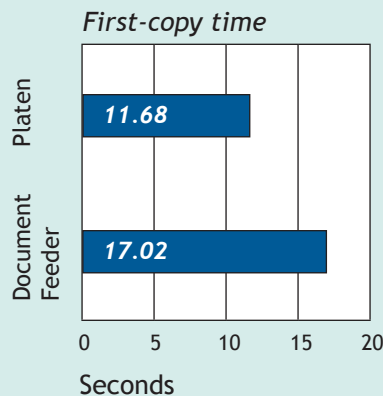
Job Stream:

The unit completed the job stream in 2 minutes and 18.88 seconds, running at 8.21 ppm, which translates to an efficiency rate of 41.04%.

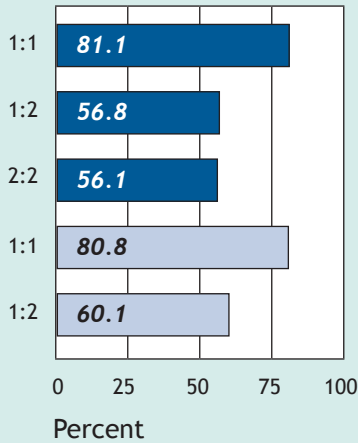
BLI's job stream includes Word documents, Outlook e-mail messages, Excel spreadsheets and PowerPoint, HTML and Acrobat PDF files, totaling 19 pages. This test simulates the type of traffic a typical device might experience in a real-world, multi-user environment. All of the files are sent to the printer as a group, at which time the stopwatch begins; timing ends when the last page of the last file exits the device. Job stream efficiency is determined by the percentage of the rated speed at which the unit operates when producing real-world jobs. The closer the rate is to 100%, or if it exceeds 100%, the more efficient the unit.

First-copy time:

11.68 seconds from the platen.
17.02 seconds from the document feeder.



Overall Efficiency



BLI obtains the overall efficiency for each copy/print mode by averaging the efficiency ratings (derived by dividing the tested speed of the device by the rated speed, and then multiplying by 100) for each run length (1 and 5 sets).

■ Copy
■ Print

Copy/Print Efficiency For Multiple Sets

Copy		1:1				
Sets	Min.	Sec.	PPM	Efficiency	Overall Efficiency	
1	0	42.97	14.0	69.8%	69.8%	
5	2	42.47	18.5	92.3%	81.1%	
Copy		1:2				
Sets	Min.	Sec.	PPM	Efficiency	Overall Efficiency	
1	1	17.72	7.7	38.6%	38.6%	
5	3	20.12	15.0	75.0%	56.8%	
Copy		2:2				
Sets	Min.	Sec.	PPM	Efficiency	Overall Efficiency	
1	2	38.88	7.6	37.8%	37.8%	
5	6	43.15	14.9	74.4%	56.1%	
Print		1:1				
Sets	Min.	Sec.	PPM	Efficiency	Overall Efficiency	
1	0	43.79	13.7	68.5%	68.5%	
5	2	41.19	18.6	93.1%	80.8%	
Print		1:2				
Sets	Min.	Sec.	PPM	Efficiency	Overall Efficiency	
1	1	10.91	8.5	42.3%	42.3%	
5	3	12.41	15.6	78.0%	60.1%	

Efficiency is tested using a 10-page document. In print mode, the document is printed using the PostScript driver at 600-dpi resolution.

PRINT DRIVERS

Canon imageRUNNER 2020i Print Driver Features

Windows 2000	PCL 6
Auto Feature/Device Detection	Yes
Booklet Printing	Yes
Collate Sets	Yes
Consumables Gauge	No
Delayed/Scheduled Print	No
Max Paper Sources Per Job	2
N-up Printing	2 to 16
Overlay	Yes
Paper Gauge	No
Print and Hold	No
Proof Print	No
Quantity Selection	Up to 999
Reduction/Enlargement	25% to 400%
Resolution Modes	600 dpi
Save Settings	Yes
Secure Printing	No
Watermarks/Custom Watermarks	Yes/Yes

SCAN FUNCTIONS

Scan to e-mail speed (8-1/2" x 11" originals):
1:1 mode: 23.42 originals per minute.

Scan File Size

Mode	PDF	PDF
Single-page file	B&W:	63 KB
Multi-page file	B&W	2 MB

All files are transmitted using 300-dpi and PDF mode.



TONER YIELD

Tested Toner Yield/Cost Per Page

Toner Cartridge Net Weight (Grams)	Toner Yield (Impressions)	Impressions Per Gram	Toner Cost Per Page ¹	Supplies Cost Per Page
455.4	8,082	17.74	0.392¢	0.392¢

¹ Testing was conducted using BLI's toner yield test original with 6% page coverage.

² Supplies cost per page is based on BLI's tested toner yield and Canon's suggested retail pricing. Toner is the only supply used by this product.



FAD 14347

Canon imageRUNNER 2020i

Manufacturing Status: New
Console, digital Monochrome copier, MF
Dry, monocomponent toner

BACKGROUND INFO	Dataquest Segment 1
SRP (USA; Canada):	\$4,900; Info not avail
Domestic Intro Date:	March 2006
OEM:	Canon (China)
Also Sold As:	None
Distribution:	Dealers and subsidiaries
Max Mo Duty Cycle:	50,000 copies

■ MULTIFUNCTION MODES

Copier:	Std	Fax:	Opt
Internet Fax:	Std	Network Fax:	Std
Network Printer:	Opt	PC Fax:	No
Printer:	Std	Scanner:	Std

■ GENERAL SPECS/PAPER HANDLING

First Copy Time:	7.9 sec
Multicopy (Ltr/Lgl/Ldgr):	20 cpm/10/10 cpm
Warm-up Time:	13 sec
Std Paper Source(s):	Dual drawer
Std Paper Capacity:	250/250
Paper Weights:	17 to 24 lbs
Bypass/Paper Weights:	80-sheet/17 to 32 lbs
Max Paper Sources/Cap:	5/1,080 sheets
Max Original Size:	11 x 17
Min/Max Output Size:	3-3/4 x 5-7/8/11 x 17
Scan/Copy Resolution:	600 x 600 dpi
Std/Max Copier Memory:	256 MB/256 MB
Duplex:	Auto (1:2, 2:2, 2:1)
Capacity/Paper Sizes:	Unlimited/8-1/2 x 11 to 11 x 17
Document Feeder:	Std RADF
Speed/Capacity:	20 opm/50 orig
Paper Weights:	14 to 28 lbs
Stapler/Sorter:	None
Bins/Stapling Cap:	Not applicable
Stapling Positions:	Not applicable
Finisher:	Opt finisher
Tray/Stapling/Pos(s):	770, 200, 200*/50/1

Other: Finisher-U1 paper capacity is 770 sheets; *2nd opt Additional Finisher Tray (C1) offers two 200-sheets each; opt Inner 2-way tray comes with two trays (top tray has 100 shts and lower tray has 250 shts)

■ COPIER FEATURES

Automatic Features:	AES, APS, AS		
Book Copy:	Yes	Job Programs:	No
Booklet Mode:	No	Job Time:	No
Color:	No	Language:	Std
Copy Control:	100**	Margin Shift:	No
Covers:	No	Neg/Pos:	No
Editing:	No	OHP Interleaving:	No
Energy-Save:	Yes	Photo Mode:	Yes
Erase:	Std	Preset R/E:	4R, 3E
Image Insert:	No	Program Ahead:	Yes
Image Overlay:	No	Sheet Insertion:	No
Image Repeat:	No	Stamping:	No
Image Rotate:	Std	Timer:	No
Interrupt:	No	2-in-1:	Std
Job Build:	No	XY Zoom:	Yes
Zoom Range:	50 to 400 (1%)		

■ OTHER FEATURES: **Std 100 dept. IDs, Opt 1,000 dept. IDs; mixed size originals; scan-once-print-many

MULTIFUNCTIONALITY

CONNECTIVITY SPECS

Client OS Support:	Windows 9x, NT 4.0, Me, 2000, XP, Server 2003; Macintosh OS X+		
Parallel Interface:	None		
PC Fax/Print/Scan:	Not applicable		
Serial Interface:	None		
PC Fax/Print/Scan:	Not applicable		
USB Interface:	Std		
PC Fax/Print/Scan:	Yes/Yes/No		
Network Interface:	Std Ethernet		
Interface Type:	10/100BaseTX		
LAN Fax/Print/Scan:	Yes/Yes/No		
Networks Supported:			
NetWare:	Yes	Windows NT:	Yes
AppleTalk:	Yes	UNIX:	Yes
AS/400:	Info not avail	Other:	

PRINTER SPECS

Engine Mfr/Model:	Canon/imageRUNNER 2020i		
Compatibility:	IBM PC, Mac		
Speed:	20 ppm		
Max Print Area:	11 x 17		
Enhanced Resolution:	1200 x 600 dpi		
Unenhanced Resolution:	600 x 600 dpi		
Std/Max Printer Memory:	Shared		
Controller Mfr/Model:	Canon/Std. print		
Processor/Bits/MHz:	Custom processor/INA/INA		
PDL/PCL:	UFR II LT, PCL 5e/6		
Controller Mfr/Model:	Not applicable		
Processor/Bits/MHz:			
PDL/PCL:			
Controller Mfr/Model:	Not applicable		
Processor/Bits/MHz:	Not applicable		
PDL/PCL:	Not applicable		

Other:

SCANNER & IMAGE MANAGEMENT SPECS

Connection Type:	Network		
Technology/Speed:	CIS/20 ipm		
Max Resolution:	600 x 600 dpi		
TWAIN Compatible:	No		
Scan Destinations:			
E-Mail:	Yes	I-fax:	Yes
FTP:	Yes	SMB:	Yes
HDD:	Info not avail	URL:	
LDAP:	Info not avail		
Scan/Image Software:	Not applicable/Not applicable		
OCR Software:	Not applicable		
File Mgmt Software:	Not applicable		

Other:

FACSIMILE SPECS

Scanner Technology:	CCD
Compression Method:	MH/MR/MMR/JBIG
Modem Speed:	33.6 Kbps
Std/Max Fax Memory:	256 MB/256 MB
Min/Max Orig Size:	5-1/2 x 8-1/2/11 x 17
Max Paper/Print Width:	11/11
Effective Scan Width:	11
Battery Backup:	Yes
Relay Request:	No
Confid TX/RX:	No
Dual Lines:	No
Timers:	Yes
Multi Access:	Yes
Dialing Capabilities	
Broadcasting (Grps/Dest):	199/201
Redial Attempts/Intervals:	1 to 10/2 to 99 min
One Touch/Speed Dial:	60 / 500

Other: Color fax transmission

COMMENTS Supports Color Send capabilities, as well as Canon's PDF High Compression mode to allow for the handling of color images over the network

ADDITIONAL INFORMATION

Control Panel:	Keypad and touch-screen
Quantity Selector:	1 to 99 copies (0 to 9 keypad)
Message Display:	Yes
Help Key:	Yes
Dimensions (H x W x D):	29-7/8" x 24-1/2" x 26-3/8"
Weight (Base Unit):	115 lbs
Power Reqs (V / Amps):	120 V, 4.6 A
Dedicated Outlet:	Yes
Energy Star-Compliant:	Yes
Operating Noise Level:	66 dB

SUPPLIES / MAINTENANCE

Photoconductor:	Organic drum unit
Yield:	55,000
Price:	\$192
Toner:	Weight not avail
Yield:	8,300
Price:	\$31.70
% Coverage:	6%
Developer:	Not applicable
Yield:	Not applicable
Price:	Not applicable
PM Schedule:	Info not avail

OPTIONS

Finisher-U1:	\$1,200
Additional finisher tray 200-sheet (C1):	\$220
Inner 2 way tray:	\$270
Cassette feeding module 2 x 250-sheet (K1):	\$850
Cassette feeding module 1 x 250-sheet (J1):	\$500
Cabinet-small (S1):	\$137
Cabinet-large (R1):	\$137
Document tray:	\$55
G3 fax board-T1:	\$400
AXIS 1650 printer server:	\$ not avail
Serial interface board:	\$ not avail

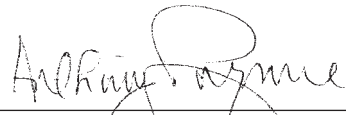
CERTIFICATE OF RELIABILITY

AWARDED TO

CANON U.S.A., INC.

For the performance of the
Canon imageRUNNER 2020i
throughout BLI's in-house durability test.

This is to certify that when subjected to a 50,000-impression
Buyers Lab durability test in a networked environment
the Canon imageRUNNER 2020i proved to be a highly reliable product.



ANTHONY F. POLIFRONE
MANAGING DIRECTOR



July 2006

DATE

THE LEADING INDEPENDENT OFFICE PRODUCTS TEST LAB AND BUSINESS CONSUMER ADVOCATE

BUYERS LABORATORY INC. • 20 RAILROAD AVENUE • HACKENSACK, NJ 07601 • USA • WWW.BUYERSLAB.COM

Copyright 2006 Buyers Laboratory. This certificate has been reproduced with the written permission of BLI.

Free Manuals Download Website

<http://myh66.com>

<http://usermanuals.us>

<http://www.somanuals.com>

<http://www.4manuals.cc>

<http://www.manual-lib.com>

<http://www.404manual.com>

<http://www.luxmanual.com>

<http://aubethermostatmanual.com>

Golf course search by state

<http://golfingnear.com>

Email search by domain

<http://emailbydomain.com>

Auto manuals search

<http://auto.somanuals.com>

TV manuals search

<http://tv.somanuals.com>