

Getting Your Multifunction Back On Your Network After A Router Or Network Change

PIXMA MX432 / MX439

Macintosh OS

If any of the following situations exist

- You have replaced your Router or Access Point
- You want to use a different wireless network
- Router settings have been changed.

Please complete the following steps to apply the new configuration settings to your multifunction.

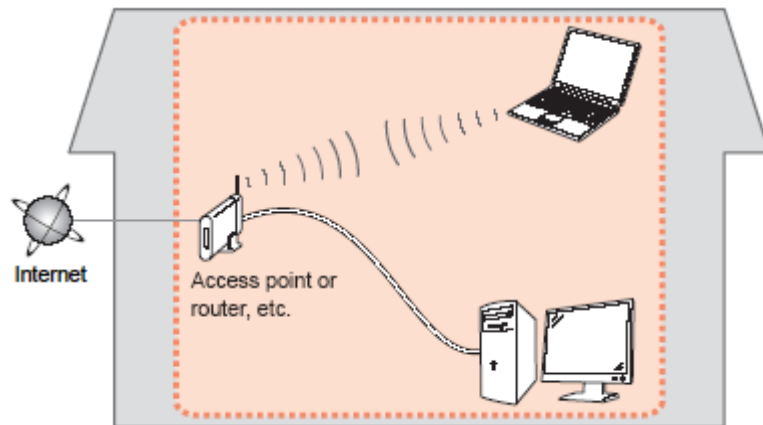
Preparing to Connect My Multifunction To My Network

[<< Previous](#)

[Next >>](#)

Network Requirements

Before connecting the machine to the network, make sure that configuration of the computer and access point or router is complete, and that the computer is connected to the network.



Wireless Connection

Before connecting the machine to the network, the computer needs to be connected to the network. Make sure that configuration of the computer and access point or router is complete.

Preparing to Connect My Multifunction To My Network

[<< Previous](#)

[Next >>](#)



An "Ad-hoc connection," which establishes a direct wireless connection between the computer and printer without using an access point, is not supported.

A router or access point is required for your printer to be used on a wireless network.

Notes on Network Connection

- The configuration, router functions, setup procedures and security settings of the network device vary depending on your system environment. For details, refer to your device's instruction manual or contact its manufacturer.
- In an office setup, consult your network administrator
- If you connect to a network that is not protected with security measures, there is a risk of disclosing data such as your personal information to a third party.
- If an error message appears or if you have trouble with the network connection, refer to the printed manual: Network Setup Troubleshooting.
- Place the machine and computer on the same network segment.

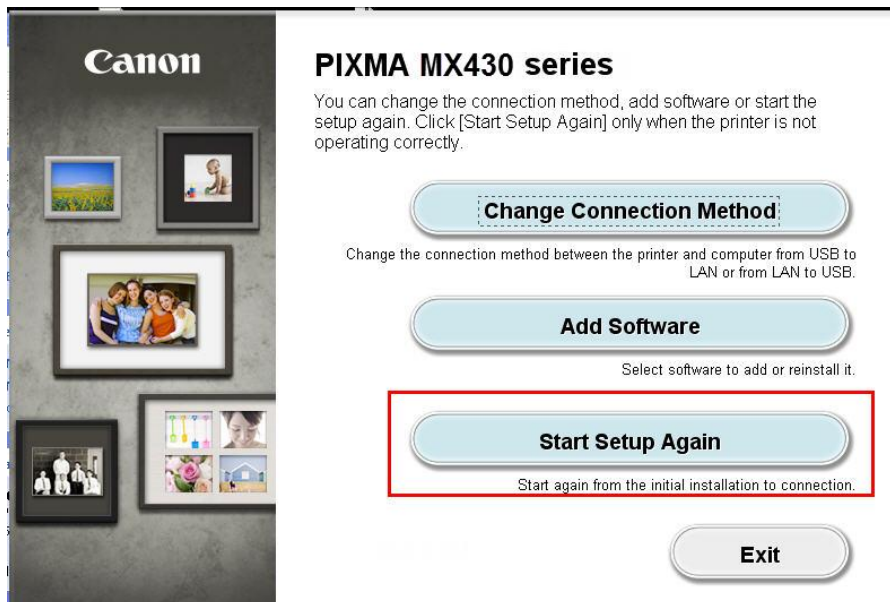
Installing the PIXMA MX432 / MX439 on Your Wireless Network

If you are reinstalling your printer on your network, a step-by-step walk through of the wireless setup is built in to the installation routine of the software that shipped with your PIXMA.

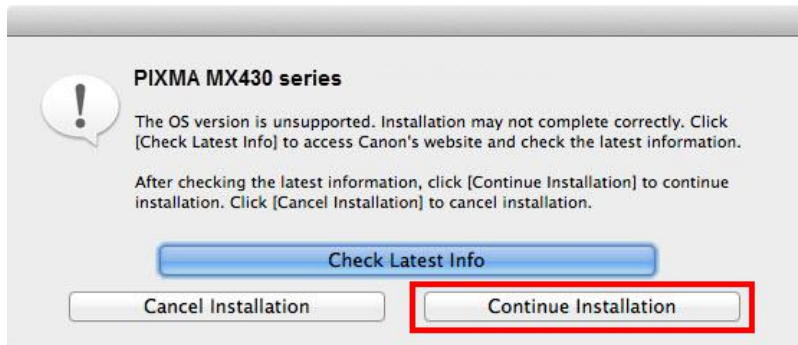
***Insert the Setup CD-ROM** that came with your printer into your CD-ROM drive and proceed through the easy to follow instructions.

*If you don't have or cannot use the Setup CD-ROM, you can still install the printer using a downloaded file. [Click here for information.](#)

If the following screen appears, click **Start Setup Again**



If the following screen appears, click **Continue Installation**



Be sure to select **Wireless Connection** on the **Connection Method Selection** screen (1-1).

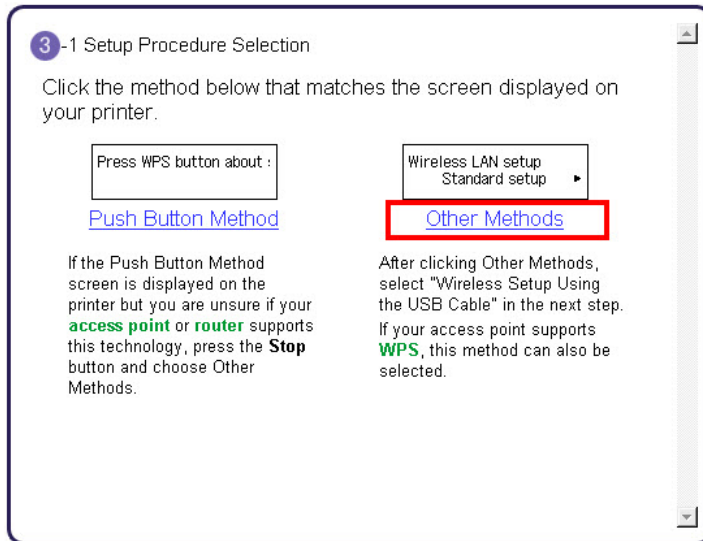


Continue carefully following the **Preparation for Connection** (1-2) and **Printer Setup** instructions (Steps 2-1 through 2-5) until the **Setup Procedure Selection** screen (3-1) appears. This is shown on the next page.

The printer automatically searches for access points that support **WPS** (Wi-Fi Protected Setup)*.

*Unless you are absolutely sure your access point supports WPS and you are familiar with activating this on your access point, **press the Stop button** on the printer's operation panel and click on **Other Methods** on the **Setup Procedure Selection** screen (screenshot shown below)*.

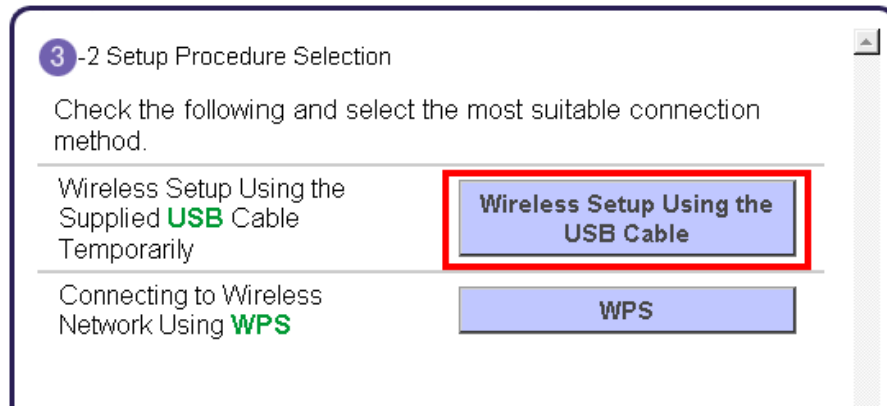
If the **Push Button Method** is not shown on the printer's operation panel (when no WPS access points have been detected), select **Standard setup** on the printer's operation panel, then click **Other Methods** on the **Setup Procedure Selection** screen



If you selected the **Push Button Method**, follow any remaining instructions to complete setup. [Skip ahead to instructions](#)

If you selected **Other Methods**, please continue to the next page for important information

On the **Setup Procedure Selection** screen (3-2) screen, select **Wireless Setup Using the USB Cable**. This is the recommended setup method. You will need to use the supplied USB cable



Continue to follow any on-screen instructions until the **Software Installation List** appears. This screen is shown on the next page

Installing the Drivers & Software

[<< Previous](#)

[Next >>](#)

On the **Software Installation List** select any additional* software to install and click **Next**.

***MP Drivers** is required for installation and cannot be deselected. In addition, we recommend installing **MP Navigator EX** and **Easy-PhotoPrint EX** in order to take full advantage of your printer's features.

*If you are using the downloaded '**Mini Master setup**' file to install the printer, only the **MP Drivers** and **Canon IJ Network Tool** will be installed. Additional software can be downloaded separately. The software can be found in the **Software** section of **Drivers & Software** (the same page where you downloaded the Mini Master setup file)

Software Installation List

The selected software will be installed. Make sure that the software you want to install is selected, and then click [Next].

You need to install all the software below to use all functions of this printer.

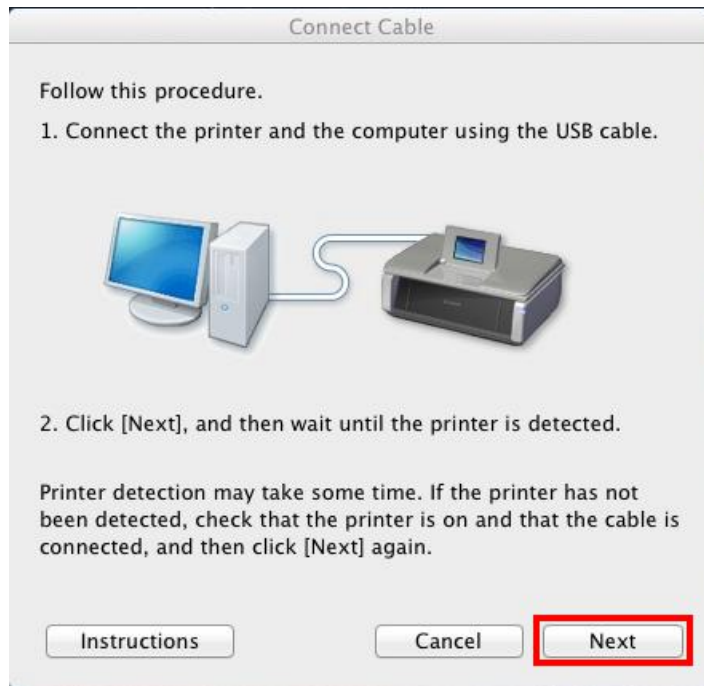
<input checked="" type="checkbox"/>	MP Drivers	190 MB	Drive 10.8 80560 MB free space Total used space: 210 MB
<input type="checkbox"/>	ScanGear	90 MB	
<input type="checkbox"/>	On-screen Manual	250 MB	
<input type="checkbox"/>	MP Navigator EX	95 MB	
<input type="checkbox"/>	Speed Dial Utility	10 MB	
<input type="checkbox"/>	Easy-PhotoPrint EX	610 MB	
<input type="checkbox"/>	Solution Menu EX	20 MB	
<input checked="" type="checkbox"/>	Canon IJ Network Tool	20 MB	
<input type="checkbox"/>			
<input type="checkbox"/>			
<input type="checkbox"/>			
<input type="checkbox"/>			

If you selected the **Push Button Method** to set up your connection, continue to follow any remaining on-screen instructions to finish and exit setup.

If you are using the **Wireless Setup Using the USB Cable** connection procedure, continue to the next page.

The drivers and software will install. Continue to follow the on-screen instructions.

Connect the supplied USB cable to the printer and computer when the **Connect Cable** screen appears. Click **Next**.



The **Connect Cable** screen closes automatically after the printer is detected

Installing the Drivers & Software


[<< Previous](#)

[Next >>](#)

If the **Access Points** screen appears:

Select the Access Point to connect to, enter the Network Key (password) and click **Connect**.

*For details on how to check the Access Point name/network name (SSID) and network key, refer to the manual supplied with your access point or contact its manufacturer.



The screenshot shows a window titled "Access Points" with the following content:

The following access points were detected.
Select the access point to connect to, and click [Connect].

Detected Access Points:

Level	Encryption	Access Point Name (SSID)	Channel
1	WPA	abcdefg	6
1	WPA2	abcdefg	6
1	WPA	MyNetwork	11

Network Information Update

To connect to this access point, enter the network password, and then click [Connect].

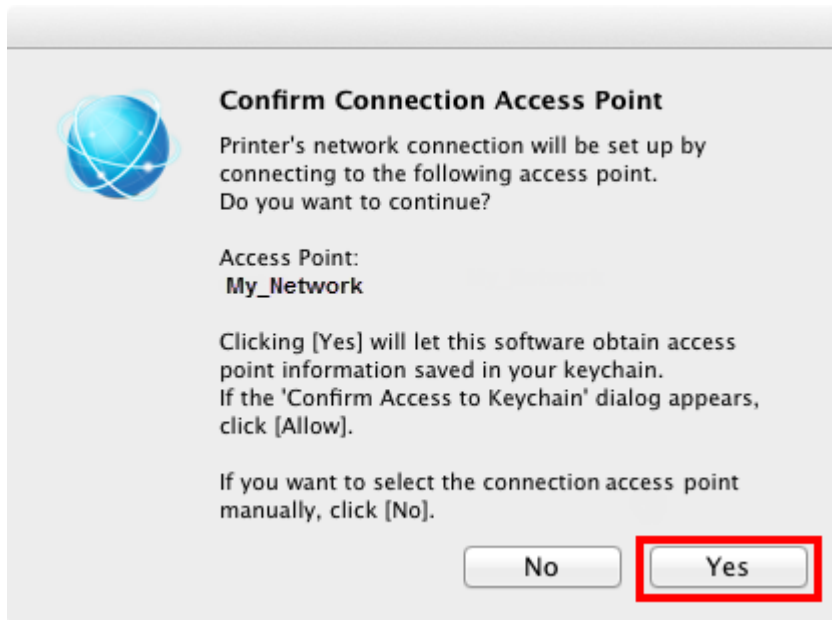
Network Password:

For the network password, click the [?] at lower left.
If you need to configure the printer network settings manually to connect to the access point, click [Manual Setup].

? Manual Setup Cancel Back **Connect**

If the **Confirm Connection Access Point** screen appears:

Click **Yes** to confirm the Access Point .



Disconnect the USB cable when the **Disconnect Cable** screen appears. Click **Next**



Setup is now complete. Follow any remaining instructions to exit the setup program.

Installing the PIXMA MX432 / MX439 on Your Wireless Network

If you can't find your CD-ROM, you may download the MX430 series Mini Master Setup, which includes the same step-by-step installation as the CD-ROM, by following the instructions below:

1. [Click here to access the MX432 Drivers & Software page.](#)
2. Select the operating system of your computer in the dropdown lists (see example below).
3. Expand the '**Drivers**' section, if necessary, by clicking the red triangle.
4. Click on the '**MX430 series Mini Master Setup**' entry.
5. After reading the license agreement, click '**I Agree – Begin Download**' and save the file to your computer.
6. Once the download is complete, double-click the file from its download location to begin the installation.
7. Follow the same instructions as you would if using the Setup CD-ROM. [Click here to go to instructions.](#)

Drivers & Software

Select an Operating System and OS Version from the drop down menu below then click on the file description to view the latest supported files for your product. Click on the file description to navigate to click on "I Agree - Begin Download" to start downloading.

Mac OS OS X v10.7 Lion [How](#)

Select Language: English Spanish All

[Show All](#)

▼ Drivers Sort by Most Recent Post

File Description	Date
⊕ MG3100 series Scanner Driver Ver. 18.0.1b (OS X...	08/31/11
⊕ MG3100 series CUPS Printer Driver Ver. 10.67.1....	07/27/11
⊕ ICA Driver Ver. 1.11.0n (OS X 10.6/10.7/10.8)	07/11/11
⊕ MG3100 series Mini Master Setup (Mac OS X 10.4...	08/22/11

Free Manuals Download Website

<http://myh66.com>

<http://usermanuals.us>

<http://www.somanuals.com>

<http://www.4manuals.cc>

<http://www.manual-lib.com>

<http://www.404manual.com>

<http://www.luxmanual.com>

<http://aubethermostatmanual.com>

Golf course search by state

<http://golfingnear.com>

Email search by domain

<http://emailbydomain.com>

Auto manuals search

<http://auto.somanuals.com>

TV manuals search

<http://tv.somanuals.com>