



PIXMA MX450 series

Setup Guide

Setup Guide

This guide provides information for setting up a network connection for the printer.

Wireless Connection

Preparation for Connection

Printer Setup

Setup Procedure Selection

 Push Button Method

 WPS

Troubleshooting

Wireless Connection

1 Preparation for Connection

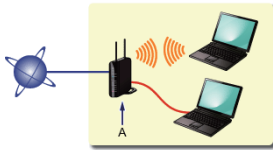
Before Starting Wireless Connection Setup

1. Make sure that the printer is turned on.
If the power is on, the ON button (A) will be lit.



Notes on Wireless Connection

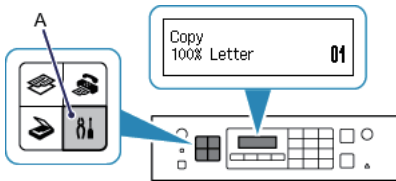
- Make sure that the computer is connected to the access point (A) (or wireless network router) you want to connect your printer to. For details on how to check the settings, refer to the manual supplied with the router or contact its manufacturer.



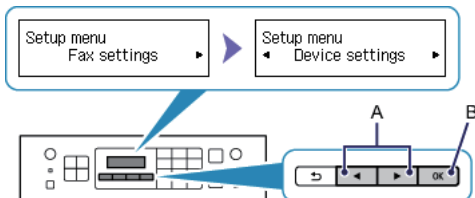
- The configuration, router functions, setup procedures and security settings of the network device vary depending on your system environment. For details, refer to the manual of your network device or contact its manufacturer.
- Check if your device supports IEEE802.11n (2.4 GHz), IEEE802.11g or IEEE802.11b.
- If your device is set to the "IEEE802.11n only" mode, WEP or TKIP cannot be used as a security protocol. Change the security protocol for your device to something other than WEP and TKIP or change the setting to something other than "IEEE802.11n only."
- For office use, consult your network administrator.
- Take added care when connecting to a network that is not protected with security measures, as there is a risk of disclosing data such as your personal information to a third party.
- An "Ad-hoc connection," which establishes a direct connection to the computer over a wireless connection without an access point, is not supported. Be sure to prepare an access point.

2 Printer Setup

1. Press the Setup button (A) on the printer.



2. Use the ◀ or ▶ button (A) to select Device settings.



3. Press the OK button (B).

4. Select LAN settings.



5. Press the OK button.

6. Select Wireless LAN setup.

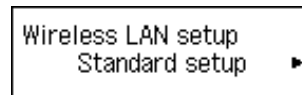
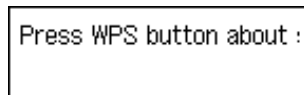


7. Press the OK button.

The (blue) Wi-Fi lamp (A) lights up when wireless connection is enabled.

3 Setup Procedure Selection

The printer will automatically search for access points supporting WPS.



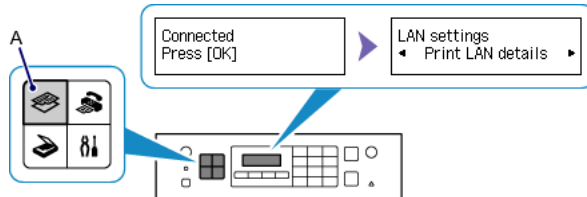
4-A Push Button Method

4 Connection Using WPS

1. Press and hold the WPS button on the access point.
For details on pressing the WPS button, refer to the access point manual.



2. Press the OK button on the printer within 2 minutes.
The (blue) Wi-Fi lamp on the printer flashes while searching for or connecting to the access point.
3. When the left screen appears, press the OK button.



4. Press the COPY button (A).

The network connection setup is now complete.

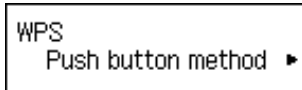
4-B WPS

4 Connection Using WPS

1. Select WPS.



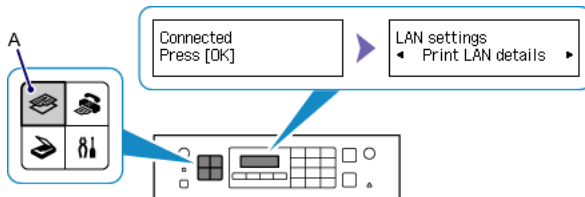
2. Press the OK button.
3. Select Push button method.



4. Press the OK button.
5. Press and hold the WPS button on the access point.
For details on pressing the WPS button, refer to the access point manual.



6. Press the OK button on the printer within 2 minutes.
The (blue) Wi-Fi lamp on the printer flashes while searching for or connecting to the access point.
7. When the left screen appears, press the OK button.



8. Press the COPY button (A).

The network connection setup is now complete.

WPS

■ Multiple APs detected

The screen appears when connections are being attempted from multiple access points simultaneously. Wait for a while, then configure WPS settings again. Press the WPS button on only one access point.

Multiple APs detected
See manual; press [OK]

■ Failed to connect

The screen appears when an error occurs.
Check the access point settings, then configure WPS settings again.

Failed to connect
See manual; press [OK]

For details on how to check the settings of the access point, refer to the manual supplied with the access point or contact its manufacturer.

■ Timeout error

The screen appears when WPS setup was not completed within a specified time.

- Is the network device (router, etc.) turned on? If the network device is already turned on, turn it off, then turn it back on.

Timeout error
See manual; press [OK]

Free Manuals Download Website

<http://myh66.com>

<http://usermanuals.us>

<http://www.somanuals.com>

<http://www.4manuals.cc>

<http://www.manual-lib.com>

<http://www.404manual.com>

<http://www.luxmanual.com>

<http://aubethermostatmanual.com>

Golf course search by state

<http://golfingnear.com>

Email search by domain

<http://emailbydomain.com>

Auto manuals search

<http://auto.somanuals.com>

TV manuals search

<http://tv.somanuals.com>