

Installing Your Multifunction to Your Network for the First Time

PIXMA MX420

Windows OS

Installing Your Multifunction to Your Network for the First Time

PIXMA MX420
Windows OS

Preparing to Connect My Multifunction to My Network	3
Network Requirements	3
Important Information You Need Before Adding Your Multifunction	4
Adding Your Multifunction to the Network	5

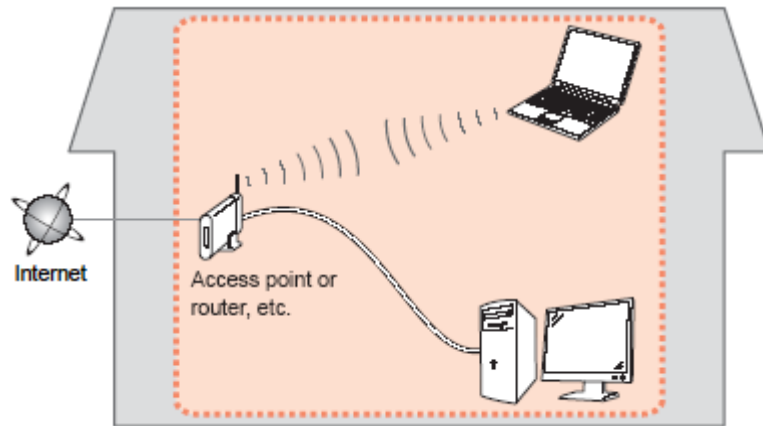
Preparing to Connect My Multifunction To My Network

[<< Previous](#)

[Next >>](#)

Network Requirements

Before connecting the machine to the network, make sure that configuration of the computer and access point or router is complete, and that the computer is connected to the network.



Notes on Network Connection

- The configuration, router functions, setup procedures and security settings of the network device vary depending on your system environment. For details, refer to your device's instruction manual or contact its manufacturer.
- The machine cannot be used over a wireless and wired connection at the same time.

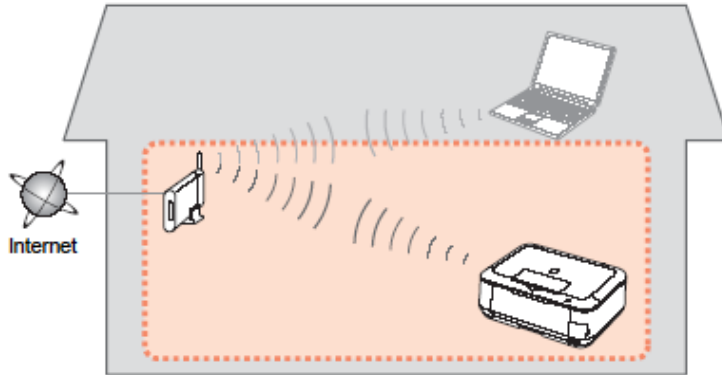
Wireless Connection

Connect to your network environment over a wireless connection.

Preparing to Connect My Multifunction To My Network

[<< Previous](#)

[Next >>](#)



An "Ad-hoc connection," which establishes a direct connection to the computer over a wireless connection without using an access point, is not supported.

Be sure to prepare an access point.

Important Information You Need Before Adding Your Multifunction

The following information is required to connect to your access point or router.

- **Access Point Name/Network Name:**

Also referred to as **SSID**. A name to identify the specific access point.

- **Network Key:**

Also referred to as encryption key, WEP key or WPA/WPA2 passphrase, Pre-Shared key.

A password required to set to prevent unauthorized access to communication.

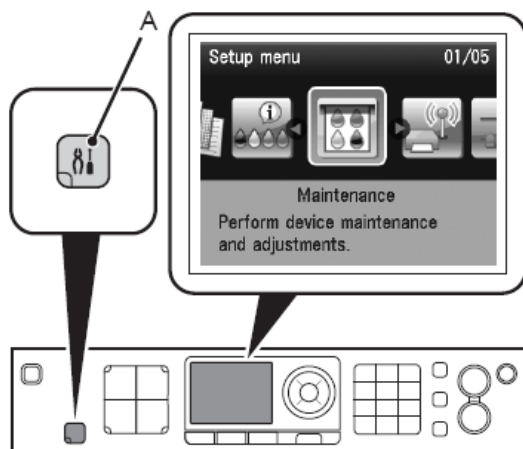
Check your access point or router for the following information, and then write it down.

NOTE: For details on how to check the following information, refer to the manual of your access point or router, or contact its manufacturer.

Adding Your Multifunction to Your Network

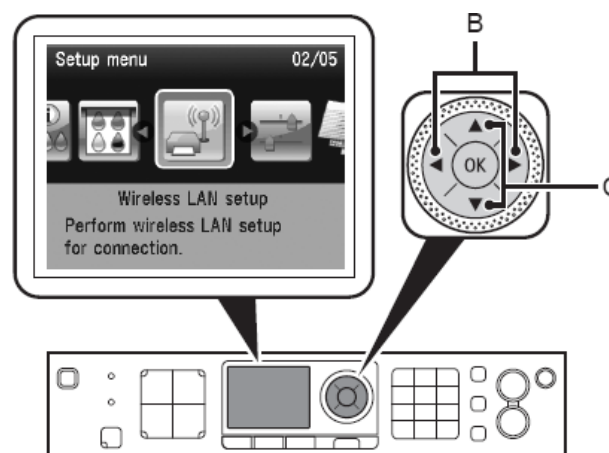
Step One

Press the **Setup** button (A)



Step Two

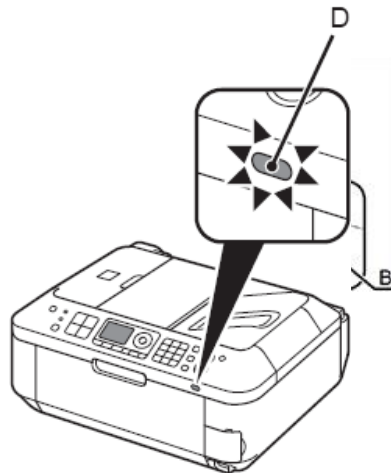
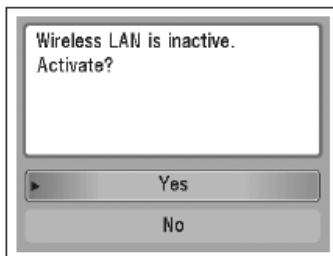
Select **Wireless LAN setup**, and then press the **OK** button.



Step Three

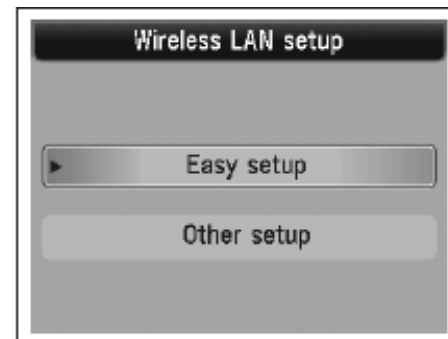
Select **Yes**, then press the **OK** button.

When wireless connection is enabled, the Wi-Fi lamp (D) lights blue.



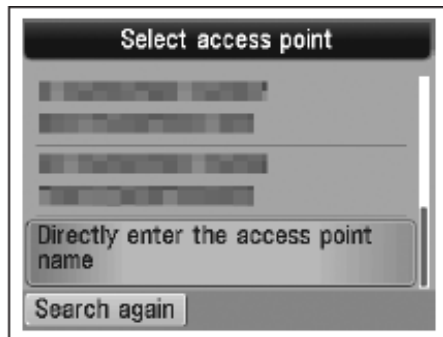
Step Four

Select **Easy setup**, and then press the **OK** button.



Step Five

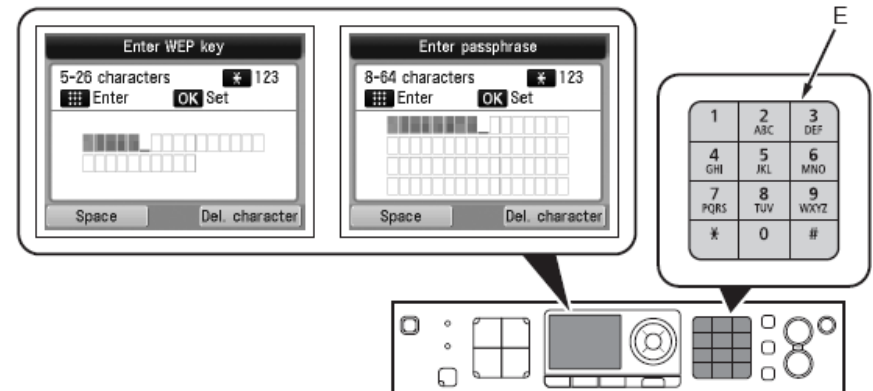
Select the access point name, then press the **OK** button.



NOTE: If you are living in an apartment, nearby access points in use may be detected.

Step Six

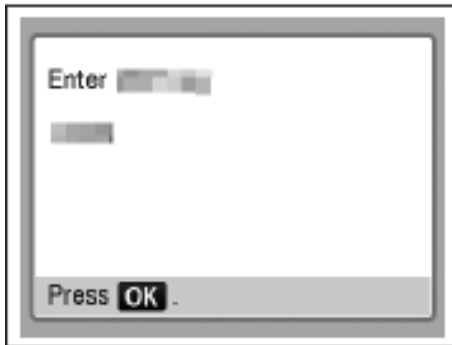
When one of the following screens is displayed, enter the network key using the Numeric buttons (E), then press the **OK** button.
If the following screen is not displayed, go to step 8



Press the ***** button to switch character entry modes.
Network key entry is case-sensitive.
Be sure to enter upper and lower case letters of the alphabet correctly

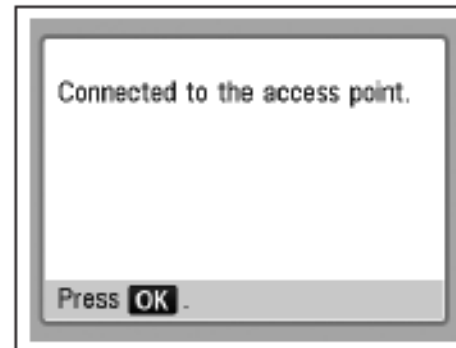
Step Seven

Make sure that the network key is correct, and then press the **OK** button.



Step Eight

When the connected to the access point screen appears, press the **OK** button.



The **Setup menu** screen returns.

NOTE: If **Failed to connect to the access point.** appears, press the **OK** button, make sure that the network key is correct, then enter it again. If a connection still cannot be established, refer to the printed manual: **Network Setup Troubleshooting.**

Installing the Drivers & Application Software

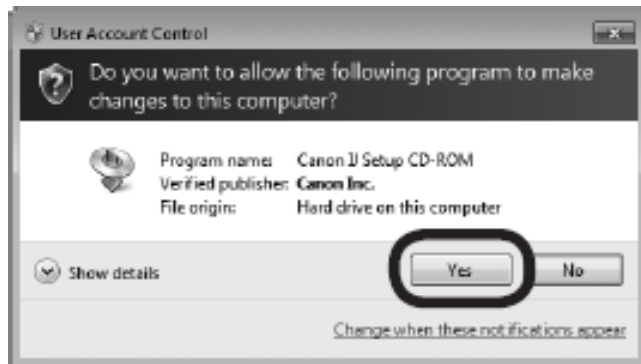
[<<Previous](#)

[Next>>](#)

Step One

insert the **Setup CD-ROM** into the CD-ROM drive. If the program does not start automatically, double-click the CD-ROM icon in **Computer or My Computer**, then doubleclick **MSETUP4.EXE**.

For Windows 7/Windows Vista: Click **Run Msetup4.exe** on the AutoPlay screen, then click **Yes** or **Continue** on the **User Account Control** dialog box. If the **User Account Control** dialog box reappears in following steps, click **Yes** or **Continue**.



Step Two

Click **Easy Install**.

The drivers, application software, and on-screen manuals are installed.



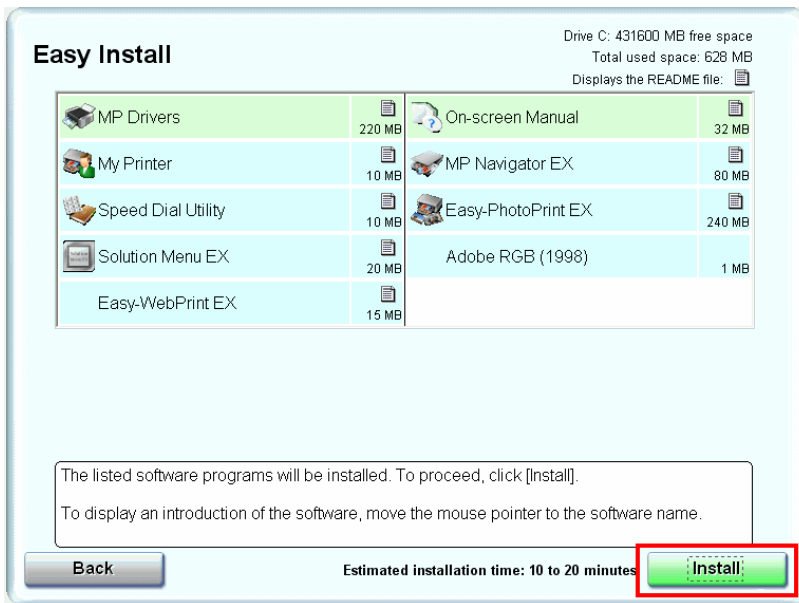
Installing the Drivers and Software

<<Previous

Next>>

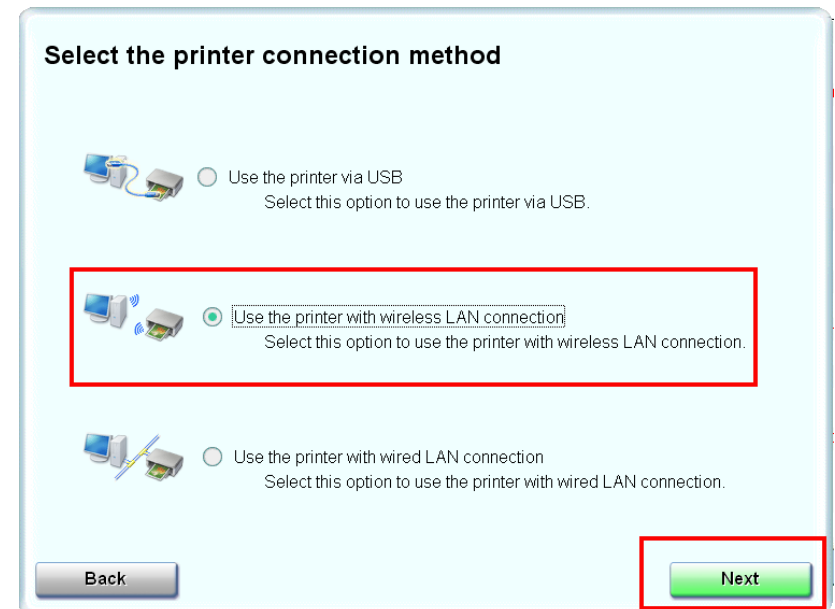
Step Three

On the next screen click **Install**



Step Four

Select **Use the printer with wireless LAN connection**, then click **Next**.



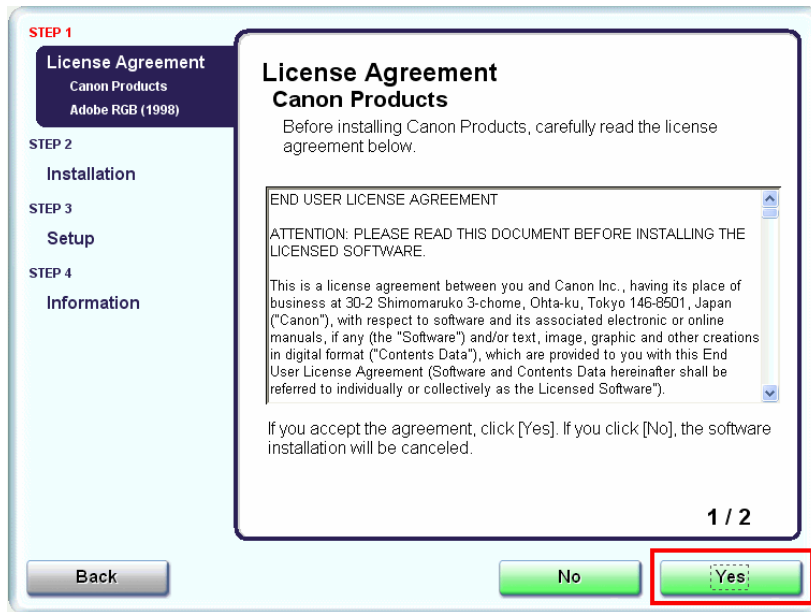
Installing the Drivers and Software

<<Previous

Next>>

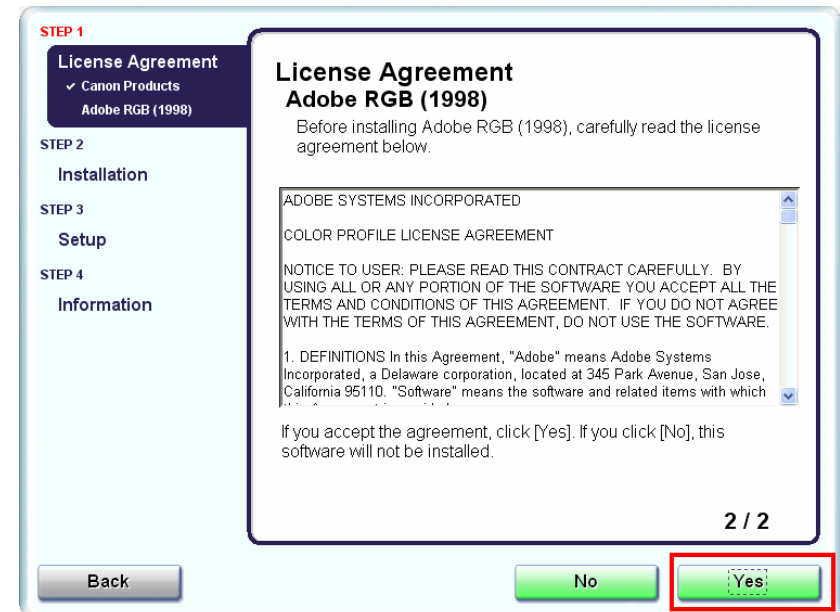
Step Five

Click **Yes** for the License Agreement



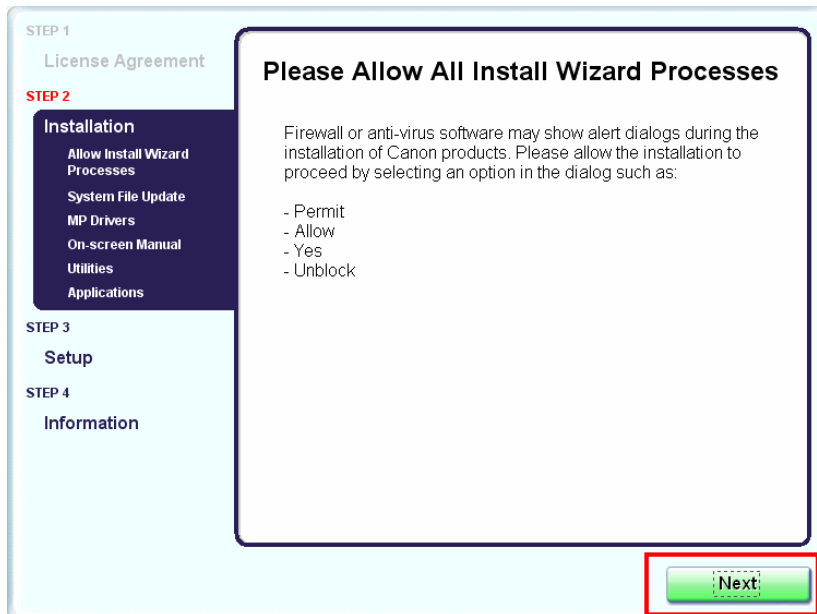
Step Six

Click **Yes** or **No** for the License Agreement Adobe RGB



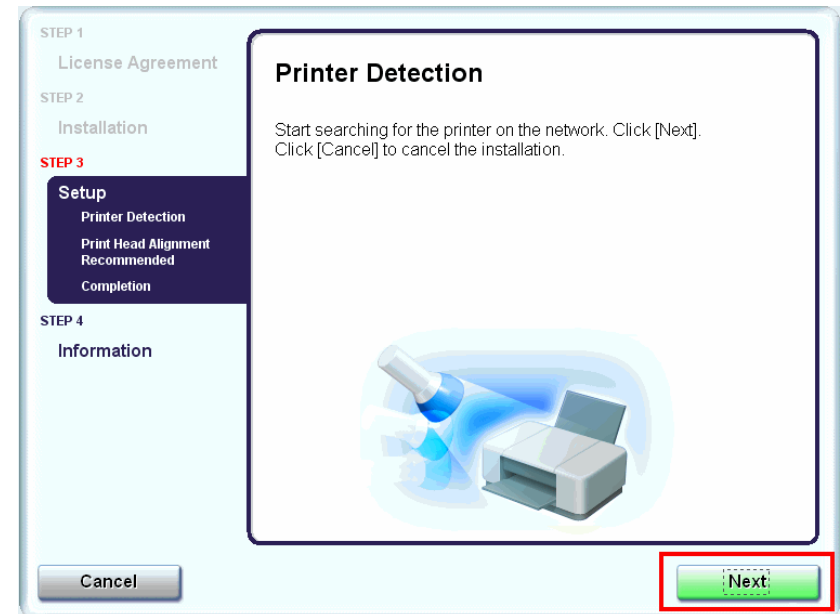
Step Seven

Click Next if the **Please Allow All Install Wizard Processes** appears



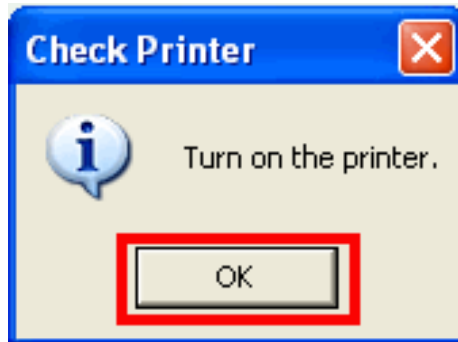
Step Eight

Click **Next** on the **Printer Detection** screen



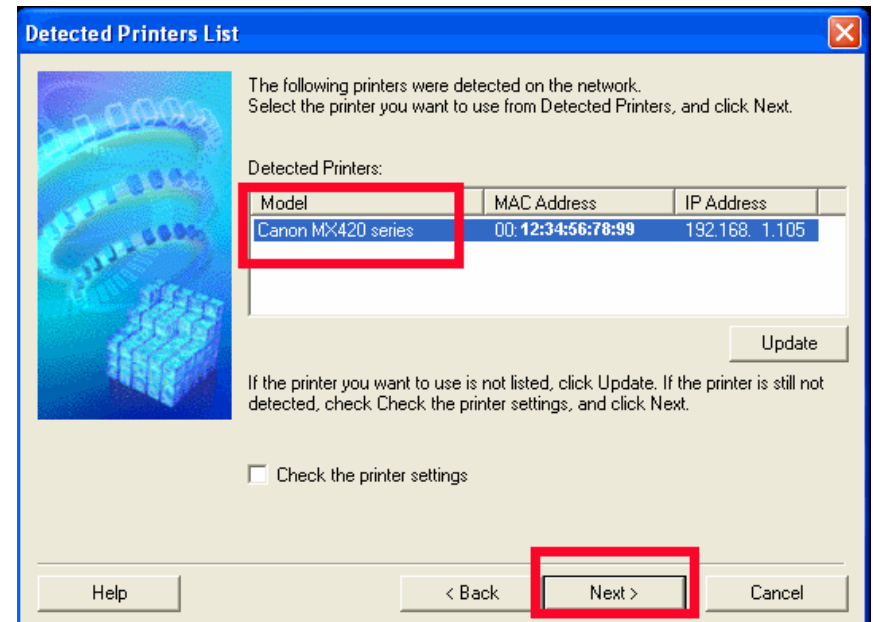
Step Nine

Turn on the printer and click **OK**



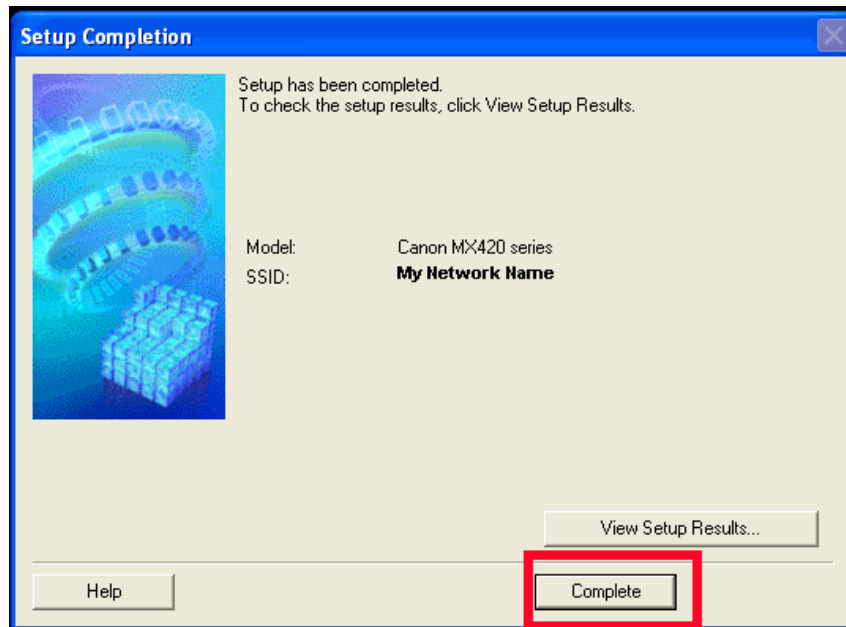
Step Ten

When the **Detected Printers List** appears, select **Canon MX420 series**. Then click **Next**.



Step Eleven

Click Complete or OK on the Setup Completion screen. Your device and software have now been set up. Please follow any remaining On-screen instructions to finish and exit.



Free Manuals Download Website

<http://myh66.com>

<http://usermanuals.us>

<http://www.somanuals.com>

<http://www.4manuals.cc>

<http://www.manual-lib.com>

<http://www.404manual.com>

<http://www.luxmanual.com>

<http://aubethermostatmanual.com>

Golf course search by state

<http://golfingnear.com>

Email search by domain

<http://emailbydomain.com>

Auto manuals search

<http://auto.somanuals.com>

TV manuals search

<http://tv.somanuals.com>