

Installing Your Multifunction to Your Network for the First Time

PIXMA MX860

Windows OS

Installing Your Multifunction to Your Network for the First Time

PIXMA MX860
Windows OS

Preparing to Connect My Multifunction to My Network	3
Network Requirements	3
Important Information You Need Before Adding Your Multifunction	4
Preparing Your Multifunction	5
Downloading & Installing the Drivers	8
Downloading the Driver	8
Installing the Driver	11
Setup the Machine and the Computer	13

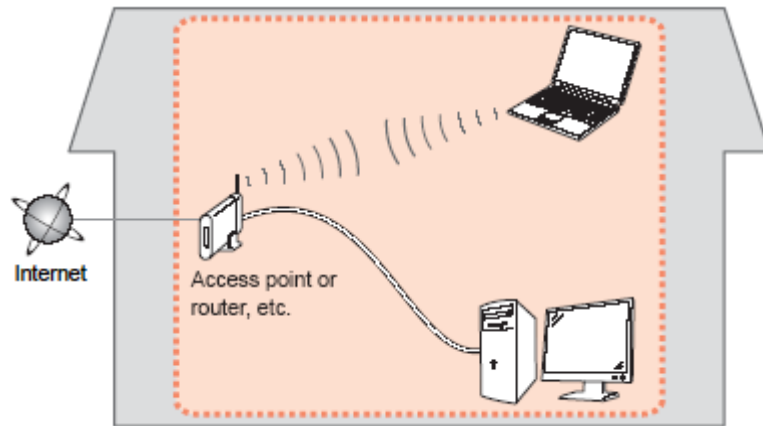
Preparing to Connect My Multifunction To My Network

[<< Previous](#)

[Next >>](#)

Network Requirements

Before connecting the machine to the network, make sure that configuration of the computer and access point or router is complete, and that the computer is connected to the network.



Notes on Network Connection

- The configuration, router functions, setup procedures and security settings of the network device vary depending on your system environment. For details, refer to your device's instruction manual or contact its manufacturer.
- The machine cannot be used over a wireless and wired connection at the same time.

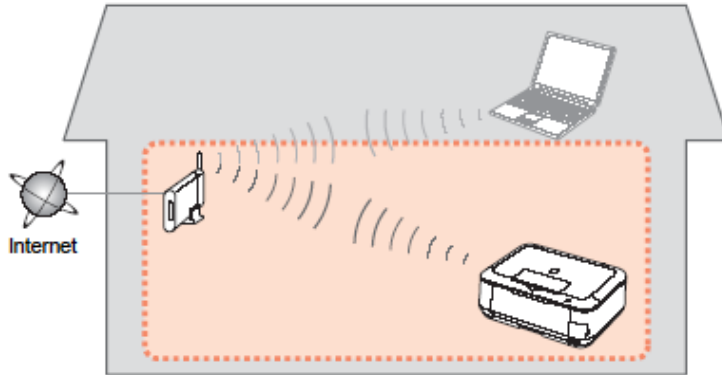
Wireless Connection

Connect to your network environment over a wireless connection.

Preparing to Connect My Multifunction To My Network

[<< Previous](#)

[Next >>](#)



An "Ad-hoc connection," which establishes a direct connection to the computer over a wireless connection without using an access point, is not supported.

Be sure to prepare an access point.

Important Information You Need Before Adding Your Multifunction

The following information is required to connect to your access point or router.

- **Access Point Name/Network Name:**

Also referred to as **SSID**. A name to identify the specific access point.

- **Network Key:**

Also referred to as encryption key, WEP key or WPA/WPA2 passphrase, Pre-Shared key.

A password is required to prevent unauthorized access to communication.

Check your access point or router for the following information, and then write it down.

NOTE: For details on how to check the following information, refer to the manual of your access point or router, or contact its manufacturer.

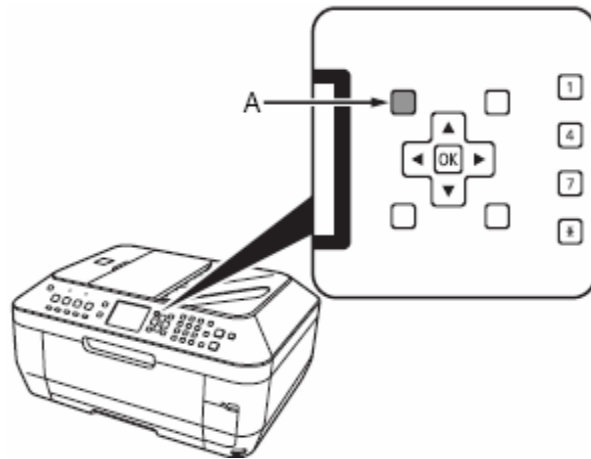
Preparing Your Multifunction

Note : The procedures below are for Wireless LAN setups **not** using the WPS (Wi-Fi Protected Setup) or WCN (Windows Connect Now) setup methods

At this point the USB cable should not be connected between the computer and printer.

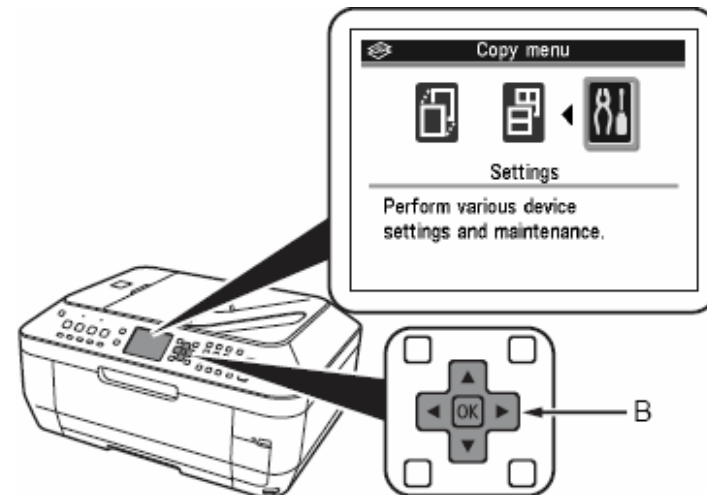
Step One

Press the Menu button (A).



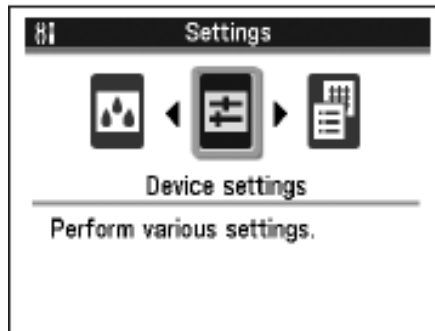
Step Two

Use the ◀ or ▶ button to select **Settings**, then press the **OK** button.



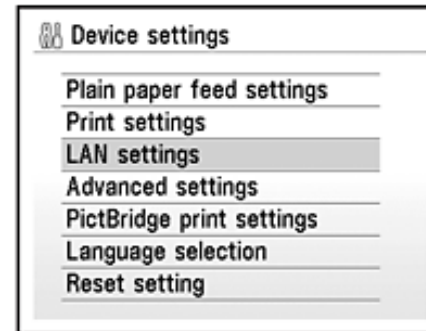
Step Three

Select **Device settings**, then press the **OK** button.



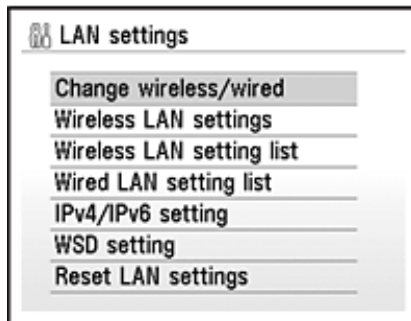
Step Four

Select **LAN settings**, then press the **OK** button.



Step Five

Select **Change wireless / wired**, then press the **OK** button.



Step Six

Select **Wireless LAN active**, then press the **OK** button.

Step Seven

Press the **On** button to turn off the printer. Connect the USB cable to the printer and computer

Downloading the Driver

To use the machine by connecting it to a computer, software including the drivers needs to be copied (installed) to the computer's hard disk. The installation process takes about 20 minutes. (The installation time varies depending on the computer environment or the number of applications to be installed.)

Step One

[Go to the Drivers & Software for your model](#)

Step Two

Select your operating system in the **Select OS** dropdown menu.

Drivers & Software

Choose an operating system from the drop down menu then select the appropriate driver or software from the list below


Choose Operating System:



Firmware

No firmware updates are available for

Select OS	Downloaded	File Size
Select OS		
Windows 7		
Windows 7 (x64)		
Windows Vista		
Windows Vista (x64)		

Step Three

In the Drivers section, click the **Download** icon for the **MP Driver for Network** 

▼ Drivers			
File Description	Post Date	Size	Download
<input type="checkbox"/> MX860 series MP Driver Ver. 1.02 (Windows 7/V... File Name: mx860swin102ea24.exe This product is a driver for Canon IJ multifunction printers.	10/26/09	16.59MB	
<input type="checkbox"/> MX860 series MP Driver Ver. 1.02 for Network ... File Name: mx860swinns102e2-2.exe This product is a driver for Canon IJ multifunction printers. Install these MP drivers if you have already had a LAN connection.	10/16/09	24.54MB	

Step Four

On the next screen, read the information and instructions and click **I Agree - Begin Download**

Select [Save] or [Run]. If [Run] is selected, the file will be automatically installed

If [Save] is selected, once the file has been downloaded, double-click it to begin the installation process

IMPORTANT:

- Quit all running applications before installation.
- Log on as the administrator (or a member of the Administrators group).
- Do not switch users during the installation process.
- Internet connection may be required during the installation. Connection fees apply.
- It may be necessary to restart your computer during the installation process. Follow the on-screen instructions. The installation resumes once your computer has restarted.

If the firewall function of your security software is turned on, a warning message may appear that Canon software is attempting to access the network. If such a warning message appears, set the security software to always allow access.

Installing the Driver

NOTE: If a **User Account Control** screen appears, click **Continue** or **Yes** (depending on Windows version) to continue.

NOTE: If the same screen reappears in subsequent steps, click **Continue** or **Yes**.

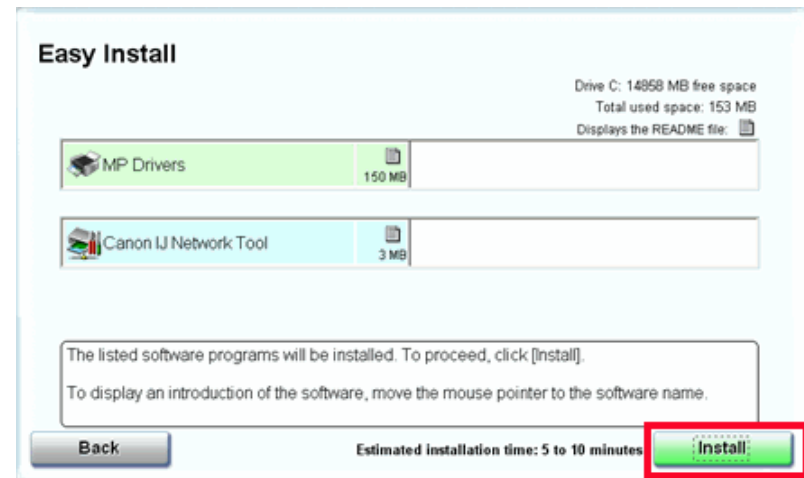
Step One

Click **Easy Install**.



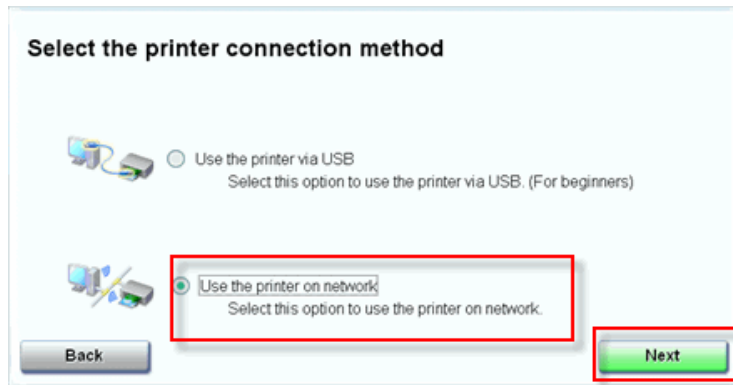
Step Two

Click **Install**.



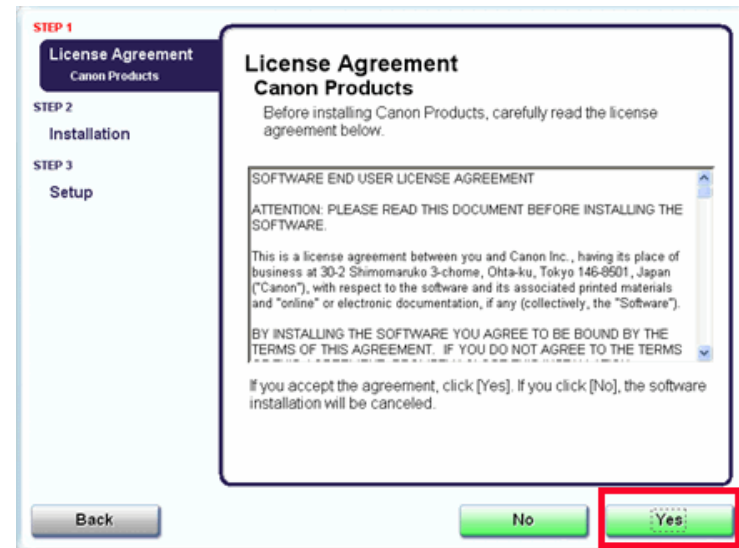
Step Three

Select **Use the Printer on network** and click **Next**.



Step Four

Click **Yes** on the License Agreement.



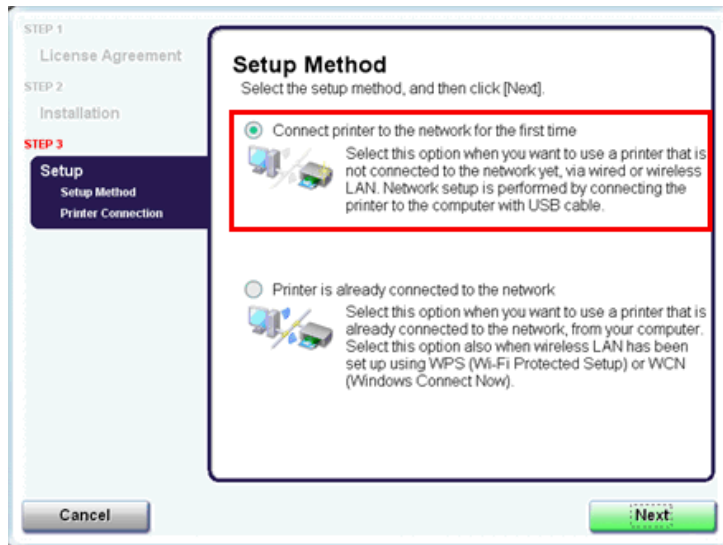
If the **Please Allow All Install Wizard Processes** screen appears, click **Next**.

Installation starts. Follow any on-screen instructions to install the software.

Setup the Machine and the Computer

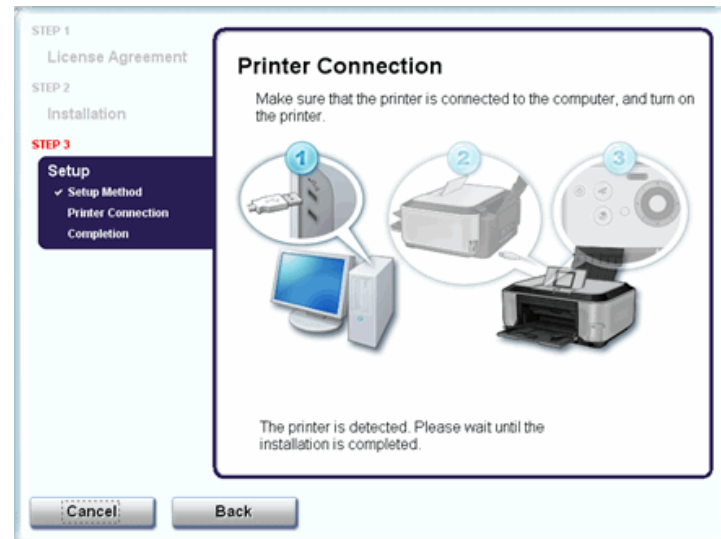
Step One

On the **Setup Method** screen, select **Connect printer to the network for the first time**, then click **Next**.



Step Two

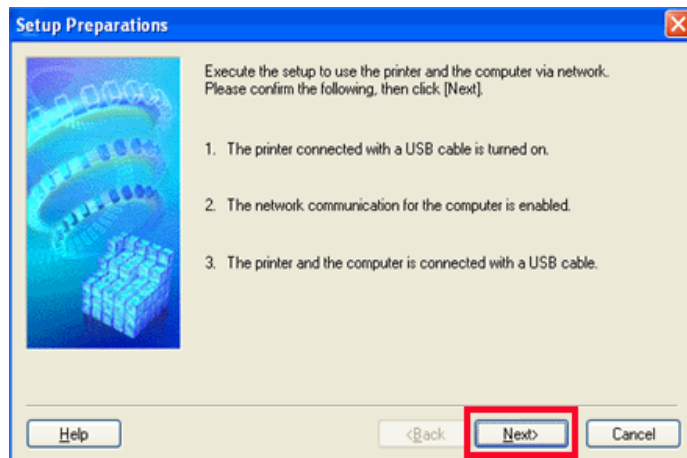
When the **Printer Connection** screen appears, connect the machine to the computer with a USB cable, then turn on the machine.



Set up the machine over a USB connection until the network connection is complete.

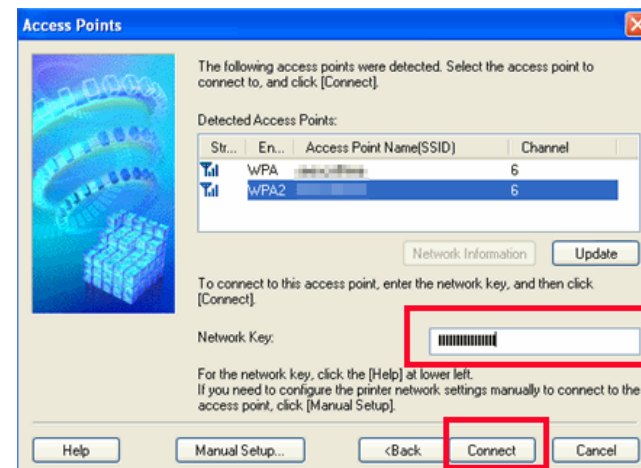
Step Three

When the **Setup Preparations** dialog box appears, confirm that preparation is complete, then click **Next**.



Step Four

Detect Access Point.



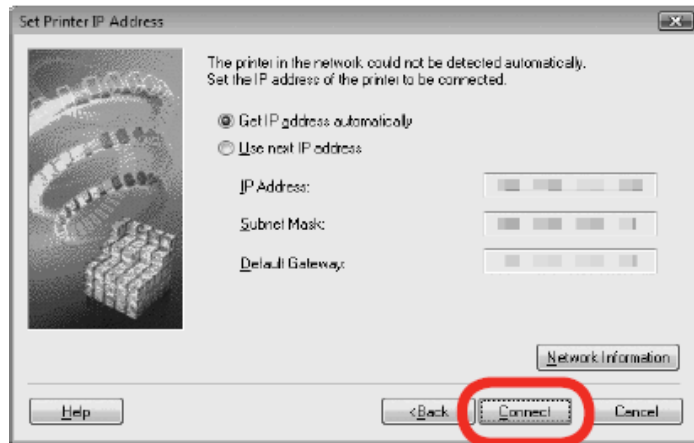
When the **Access Points** screen appears, select an access point to use, then click **Connect**.

When an access point is detected automatically, the **Access Points** screen **does not** appear. Go to step 5.

To connect to the access point with WEP or WPA displayed in the Encryption column, enter the network key (WEP key or WPA key) in Network Key, then click Connect.

Step Five

Detect the Machine

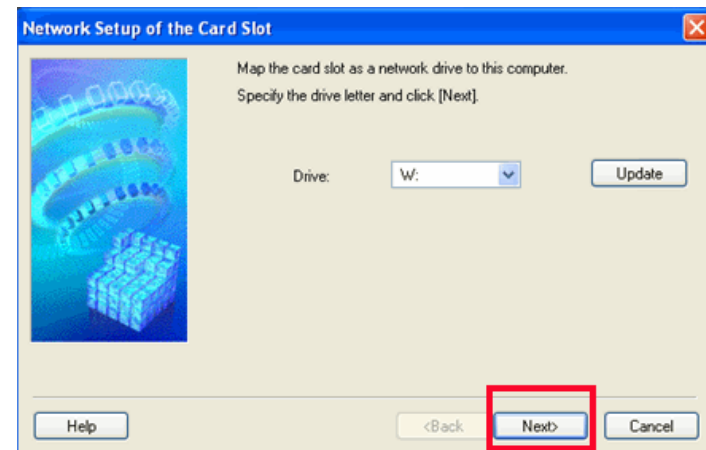


When the Set Printer IP Address screen appears, click **Connect**.

If the machine is detected automatically, the Set Printer IP Address screen **does not** appear.

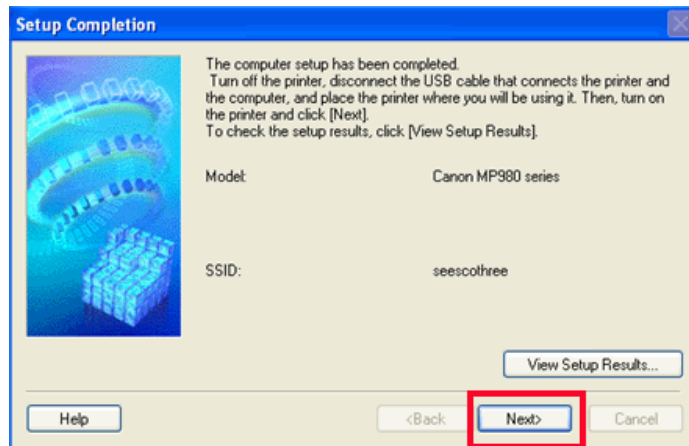
Step Six (Windows XP/2000 Only)

When the **Network Setup of the Card Slot** dialog box appears, specify the drive letter, then click **Next**.



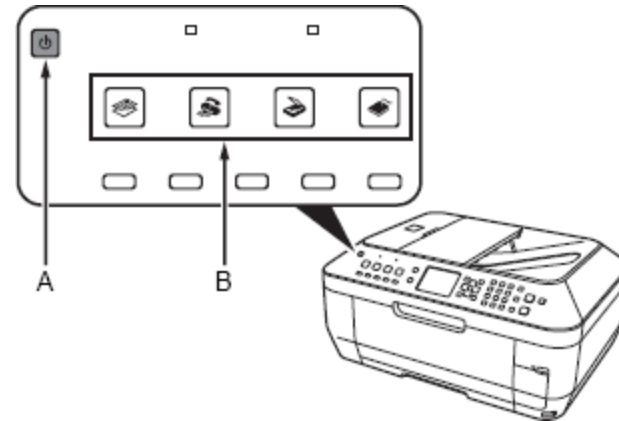
Step Seven

When the **Setup Completion** dialog box appears, remove the USB cable, then click **Next**.



Step Eight

Turn off the machine, place the machine in the location where you will use it, and turn it back on again.



Step Nine

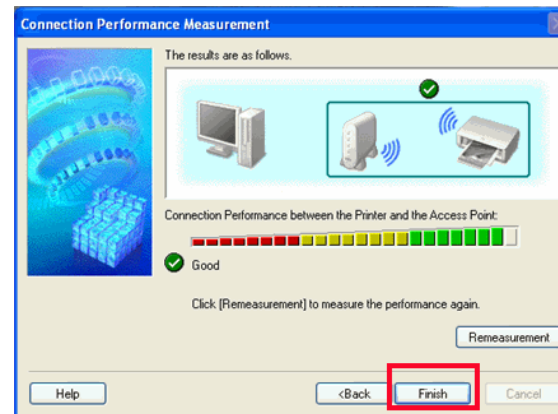
On the **Connection Performance Measurement** screen, click **Next**.


Measuring of the communication status starts, and the results are displayed.


Measuring takes a few minutes. You can cancel measuring by clicking Cancel. You also examine the detailed status of the communication link after setup by using the Canon IJ Network Tool.

Step Ten

Confirm the measurement results, then click **Finish**.



Ensure that  is displayed in Connection performance between the printer and the access point

If any symbol other than  is displayed, refer to displayed comments and Help for improving the status of communication link.

To check whether the new location is better, click **Remeasurement**. Measurement of the communication status is performed again.

When any message on Overall network performance appears in the measurement results, rearrange the printer and other network devices following the instructions on the screen.

Step Eleven

Click **Exit**. Setup is complete



Free Manuals Download Website

<http://myh66.com>

<http://usermanuals.us>

<http://www.somanuals.com>

<http://www.4manuals.cc>

<http://www.manual-lib.com>

<http://www.404manual.com>

<http://www.luxmanual.com>

<http://aubethermostatmanual.com>

Golf course search by state

<http://golfingnear.com>

Email search by domain

<http://emailbydomain.com>

Auto manuals search

<http://auto.somanuals.com>

TV manuals search

<http://tv.somanuals.com>