

# Installing Your Multifunction to Additional Computers on Your Network

PIXMA MX892

Macintosh OS

# Installing Your Multifunction to Additional Computers on Your Network

PIXMA MX892  
Macintosh OS

|  |          |
|--|----------|
| <b>Preparing to Connect My Multifunction To My Network</b> | <b>3</b> |
| Network Requirements                                       | 3        |
| Notes on Wireless Connection                               | 4        |
| <b>Using the Machine from Additional Computers</b>         | <b>5</b> |

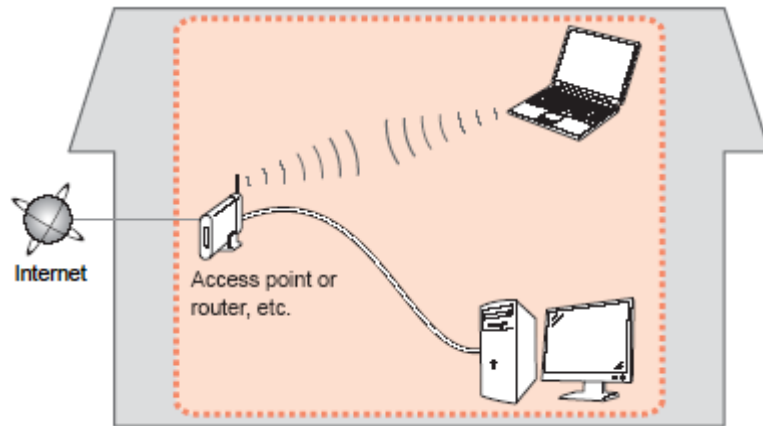
# Preparing to Connect My Multifunction To My Network

[<< Previous](#)

[Next >>](#)

## Network Requirements

Before connecting the machine to the network, make sure that configuration of the computer and access point or router is complete, and that the computer is connected to the network.



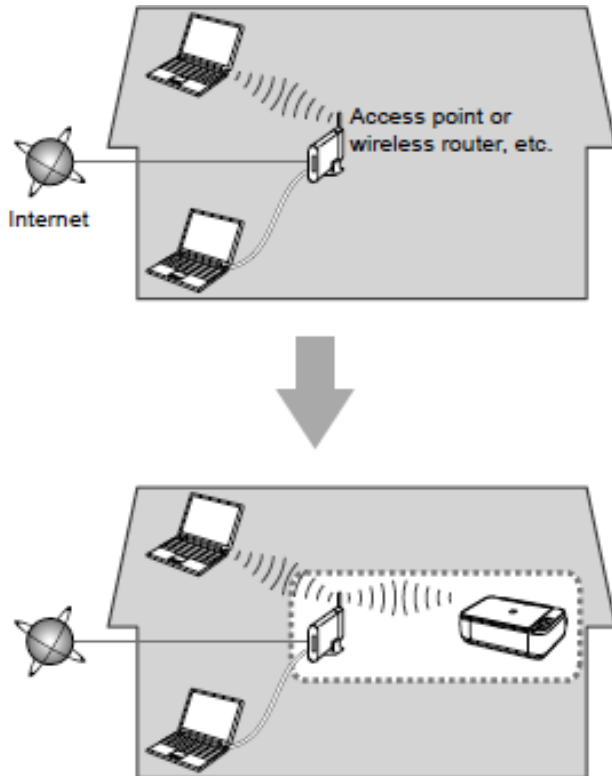
## Wireless Connection

Before connecting the machine to the network, the computer needs to be connected to the network. Make sure that configuration of the computer and access point or router is complete.

# Preparing to Connect My Multifunction To My Network

[<< Previous](#)

[Next >>](#)



An "Ad-hoc connection," which establishes a direct connection to the computer over a wireless connection without using an access point, is not supported.

**A wireless Access Point or Router is required to use your printer on a wireless LAN**

## Notes on Network Connection

- The configuration, router functions, setup procedures and security settings of the network device vary depending on your system environment. For details, refer to your device's instruction manual or contact its manufacturer.
- In an office setup, consult your network administrator
- If you connect to a network that is not protected with security measures, there is a risk of disclosing data such as your personal information to a third party.
- If an error message appears or if you have trouble with the network connection, refer to the printed manual: Network Setup Troubleshooting.
- Place the machine and computer on the same network segment.

## Software Installation

If the machine is already connected to a wireless connection, it can be used from additional computers on the same network. Connection to the network is confirmed automatically. Only the software needs to be installed. It is not necessary to make any changes or settings on the printer itself.

### IMPORTANT

- Log on as the administrator (or a member of the Administrators group).
- Quit all running applications before installation.
- If the firewall function of your security software is turned on, a warning message may appear that Canon software is attempting to access the network. If such a warning message appears, set the security software to always allow access.

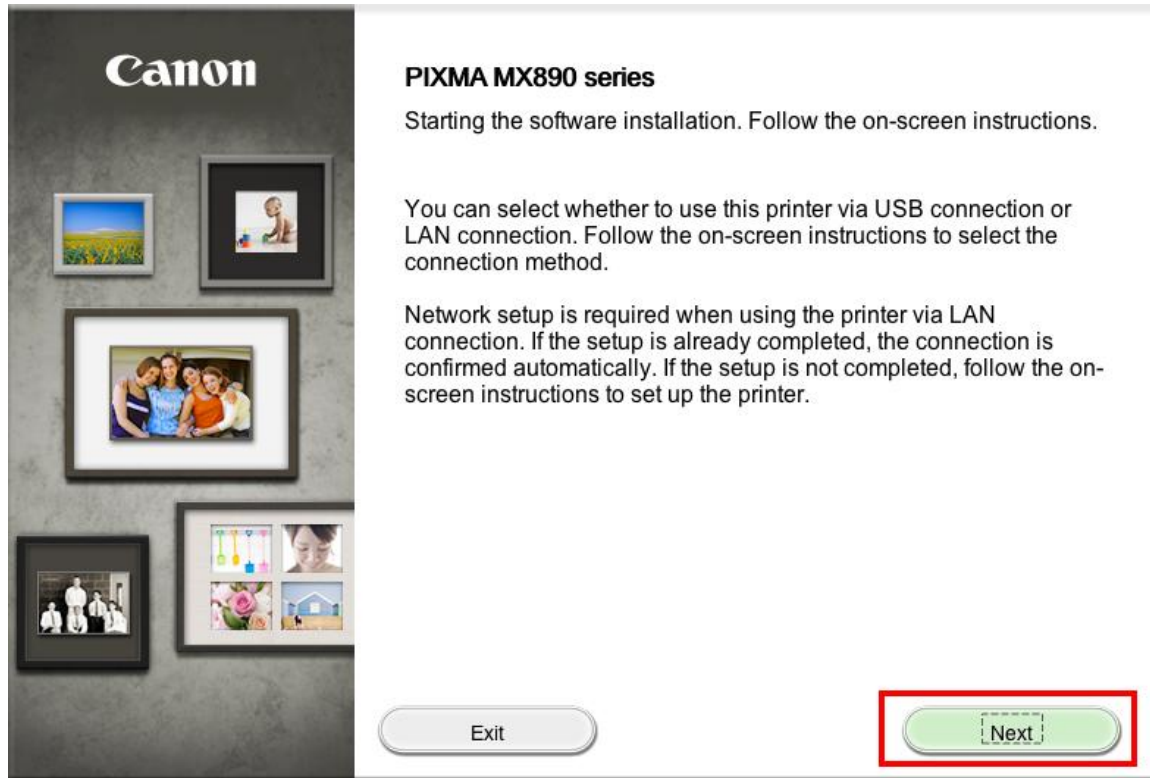
A step-by-step walk through of the wireless setup is built in to the installation routine of the software that shipped with your PIXMA.

**Insert the Setup CD-ROM\*** that came with your printer into your CD-ROM drive of each computer you wish to use with the printer and proceed through the easy to follow instructions

**\*Note:** If you don't have or cannot use the Setup CD-ROM, you can still install the software on the computer by using a file downloaded from our web site. [Click here for information](#)

## Installing the PIXMA MX892 on Additional Computers

Click **Next** on the first screen.



# Installing the Drivers & Software

[<< Previous](#)

[Next >>](#)

Network connection is automatically confirmed. Continue to follow any remaining On-screen instructions to install the software. On the Software Installation List screen, select any software to be installed. **MP Drivers** and **Canon IJ Network Tool** are required for the printer to be able to print and scan and cannot be de-selected. **MP Navigator EX** and **Easy-PhotoPrint EX\*** are highly recommended to take full advantage of your printer's features.

**Software Installation List**

The selected software will be installed. Make sure that the software you want to install is selected, and then click [Next].

You need to install all the software below to use all functions of this printer.

|                                     |                       |        |
|-------------------------------------|-----------------------|--------|
| <input checked="" type="checkbox"/> | MP Drivers            | 190 MB |
| <input type="checkbox"/>            | ScanGear              | 90 MB  |
| <input type="checkbox"/>            | On-screen Manual      | 250 MB |
| <input type="checkbox"/>            | MP Navigator EX       | 95 MB  |
| <input type="checkbox"/>            | Speed Dial Utility    | 10 MB  |
| <input type="checkbox"/>            | Easy-PhotoPrint EX    | 610 MB |
| <input type="checkbox"/>            | Solution Menu EX      | 20 MB  |
| <input checked="" type="checkbox"/> | Canon IJ Network Tool | 20 MB  |
|                                     |                       |        |
|                                     |                       |        |
|                                     |                       |        |
|                                     |                       |        |
|                                     |                       |        |
|                                     |                       |        |

Drive Lion 30925 MB free space

Total used space: 210 MB

Select All

Clear All

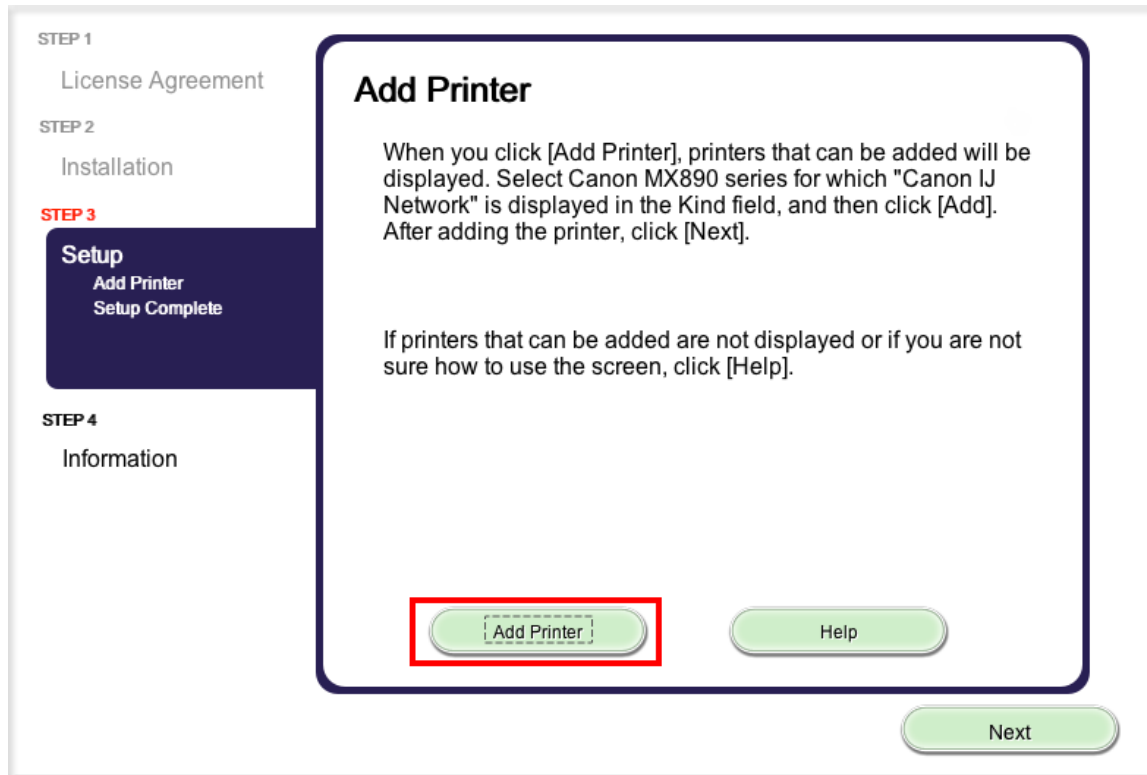
Back

Next

**\*Note:** If you are using the downloaded **Mini Master Setup** file, only the **MP Drivers** and **Canon IJ Network Tool** will be installed.

You can download the additional software applications from the **Software** section of the **Drivers & Software** page where you obtained the Mini Master setup file.

Click **Add Printer** on the **Add Printer** window.



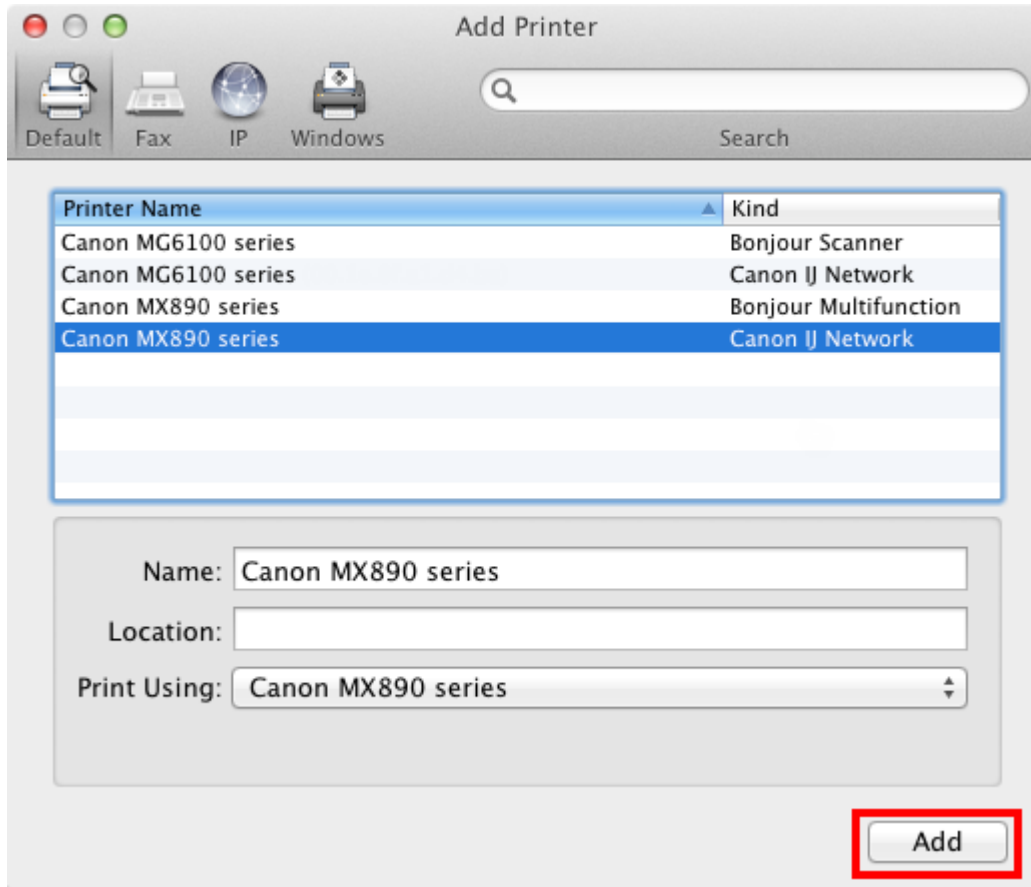


# Installing the Drivers & Software

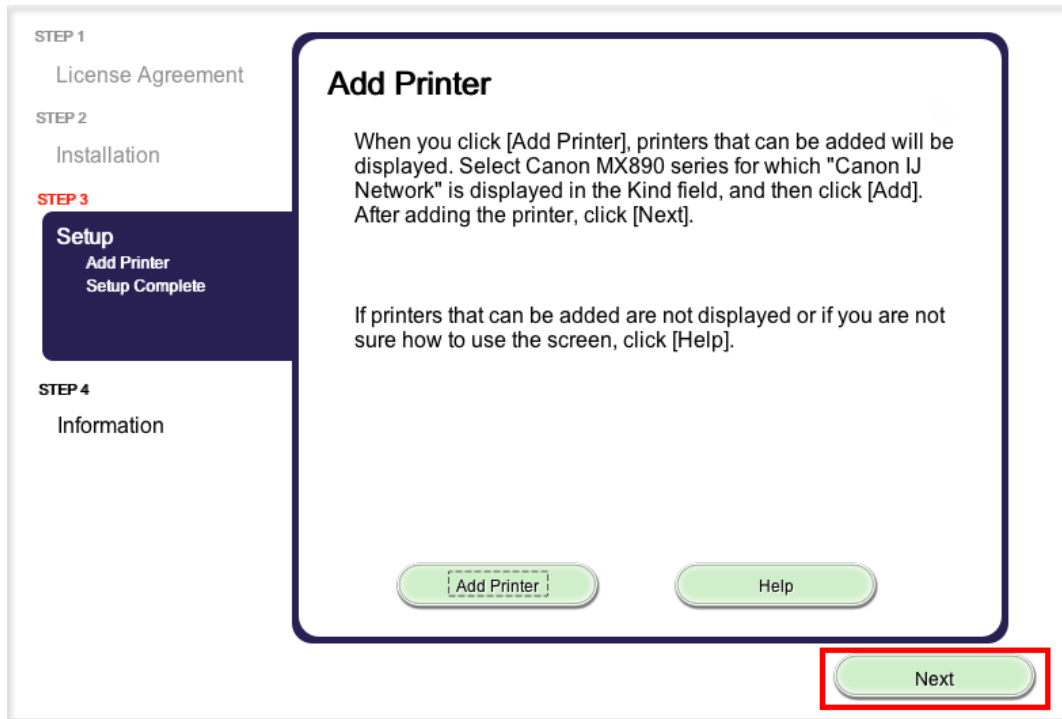
[<< Previous](#)

[Next >>](#)

Select the **Canon MX890 series** with **Canon IJ Network** listed in the **Kind** column. Click **Add**.



Click **Next** on the **Add Printer** window.



Setup is complete. Continue to follow on-screen instructions to finish and exit the setup program.

## Installing the PIXMA MX892 on Your Wireless Network

If you can't find your CD-ROM, you may download the MX890 series Mini Master Setup, which includes the same step-by-step installation as the CD-ROM, by following the instructions below:

1. [Click here to access the MX892 Drivers & Software page.](#)
2. Select the operating system and version of your computer (see example below).
3. Expand the '**Drivers**' section, if necessary, by clicking the red triangle.
4. Click on '**MX890 series Mini Master Setup**' .
5. After reading the details and disclaimer, click '**I Agree – Begin Download**' and save the file to your computer.
6. Once the download is complete, double-click the file from its download location to begin the installation.

### Drivers & Software

Select an Operating System and OS Version from the drop down menu below then click on [How to](#) view the latest supported files for your product. Click on the file description to navigate to details. Click on "I Agree - Begin Download" to start downloading.

Mac OS  OS X v10.7 Lion  [How to](#)

Select Language:  English  Spanish  All

Show All

| File Description  | Date     |
|---|----------|
| <input type="checkbox"/> MX890 series Scanner Driver Ver. 18.1.0b (OS X ...       | 08/31/12 |
| <input type="checkbox"/> MX890 series CUPS Printer Driver Ver. 10.67.1.0...       | 07/26/12 |
| <input type="checkbox"/> ICA Driver Ver. 1.11.0n (OS X 10.6/10.7/10.8)            | 07/11/12 |
| <input type="checkbox"/> <b>MX890 series Mini Master Setup (Mac OS X 10.5)...</b> | 03/16/12 |

[Return to Setup instructions](#)

## Free Manuals Download Website

<http://myh66.com>

<http://usermanuals.us>

<http://www.somanuals.com>

<http://www.4manuals.cc>

<http://www.manual-lib.com>

<http://www.404manual.com>

<http://www.luxmanual.com>

<http://aubethermostatmanual.com>

Golf course search by state

<http://golfingnear.com>

Email search by domain

<http://emailbydomain.com>

Auto manuals search

<http://auto.somanuals.com>

TV manuals search

<http://tv.somanuals.com>