

Getting Your Multifunction Back On Your Network After A Router Or Network Change

PIXMA MX432 / MX439

Windows OS

Important

If any of the following situations exist

- You have replaced your Router or Access Point
- You want to use a different wireless network
- Router settings have been changed.

Please complete the following steps to apply the new configuration settings to your multifunction •

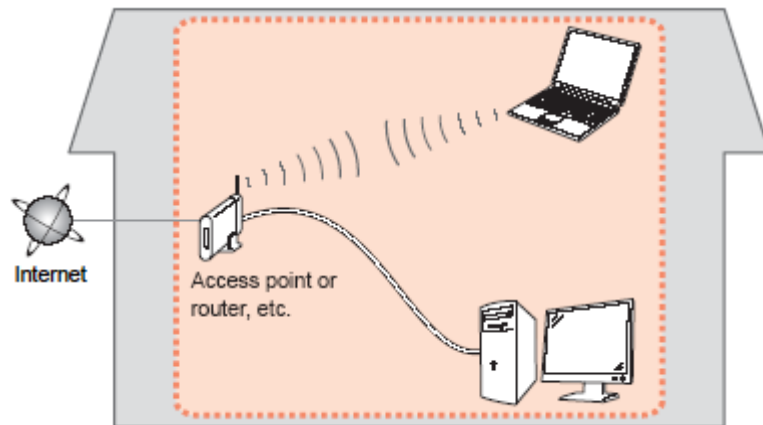
Preparing to Connect My Multifunction To My Network

[<< Previous](#)

[Next >>](#)

Network Requirements

Before connecting the machine to the network, make sure that configuration of the computer and access point or router is complete, and that the computer is connected to the network.



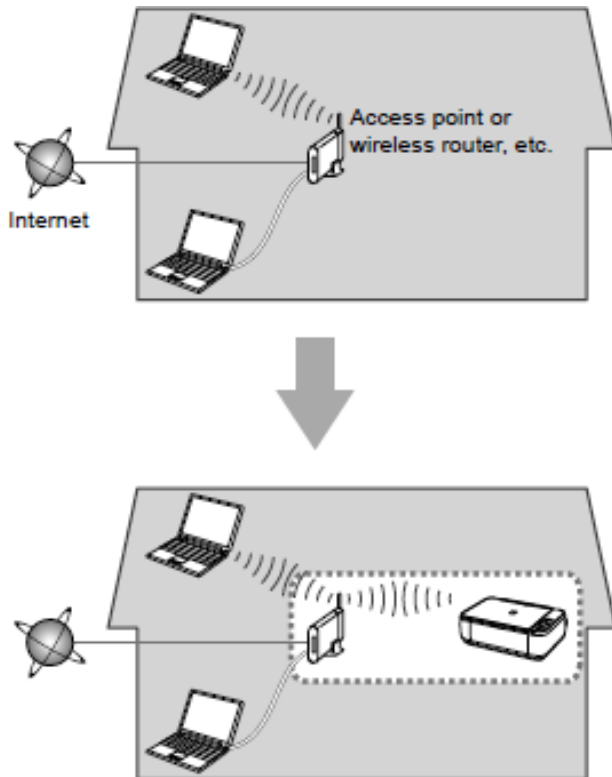
Wireless Connection

Before connecting the machine to the network, the computer needs to be connected to the network. Make sure that configuration of the computer and access point or router is complete.

Preparing to Connect My Multifunction To My Network

[<< Previous](#)

[Next >>](#)



An "Ad-hoc connection," which establishes a direct wireless connection between the computer and printer without using an access point, is not supported.

A router or access point is required for your printer to be used on a wireless network.

Notes on Network Connection

- The configuration, router functions, setup procedures and security settings of the network device vary depending on your system environment. For details, refer to your device's instruction manual or contact its manufacturer.
- In an office setup, consult your network administrator
- If you connect to a network that is not protected with security measures, there is a risk of disclosing data such as your personal information to a third party.
- If an error message appears or if you have trouble with the network connection, refer to the printed manual: Network Setup Troubleshooting.
- Place the machine and computer on the same network segment.

Software Installation

To use the machine by connecting it to a computer, software including the drivers needs to be copied (installed) to the computer's hard disk. The installation process takes about 20 minutes. (The installation time varies depending on the computer environment or the number of application software to be installed.)

IMPORTANT

- Log on as the administrator (or a member of the Administrators group).
- Quit all running applications before installation.
- Do not switch users during the installation process.
- Internet connection may be required during the installation. Connection fees may apply. Consult the internet service provider.
- It may be necessary to restart your computer during the installation process. Follow the on-screen instructions and do not remove the Setup CD-ROM during restarting. The installation resumes once your computer has restarted.
- If the firewall function of your security software is turned on, a warning message may appear that Canon software is attempting to access the network. If such a warning message appears, set the security software to always allow access.

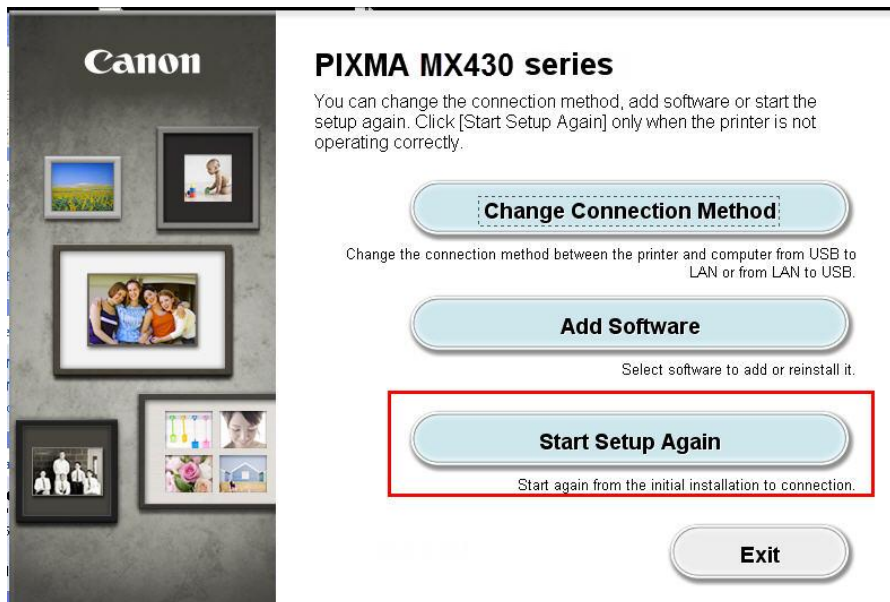
Installing the PIXMA MX432 / MX439 on Your Wireless Network

If you are reinstalling your printer on your network, a step-by-step walk through of the wireless setup is built in to the installation routine of the software that shipped with your PIXMA.

***Insert the Setup CD-ROM** that came with your printer into your CD-ROM drive and proceed through the easy to follow instructions.

*If you don't have or cannot use the Setup CD-ROM, you can still install the printer using a downloaded file. [Click here for information.](#)

If the following screen appears, click **Start Setup Again**



Installing the PIXMA MX432 / MX439 on Your Wireless Network

Carefully follow any on-screen instructions until the **Connection Method Selection** screen (1-1) appears. Be sure to select **Wireless Connection**

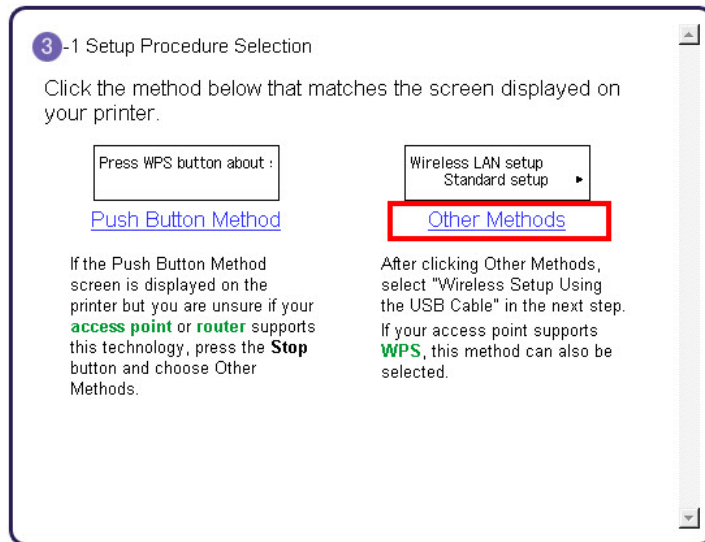


Continue carefully following the **Preparation for Connection** (1-2) and **Printer Setup** instructions (Steps 2-1 through 2-5) until the **Setup Procedure Selection** screen (3-1) appears. This is shown on the next page.

The printer automatically searches for access points that support **WPS** (Wi-Fi Protected Setup)*.

*Unless you are absolutely sure your access point supports WPS and you are familiar with activating this on your access point, **press the Stop button** on the printer's operation panel and click on **Other Methods** on the **Setup Procedure Selection** screen (screenshot shown below)*.

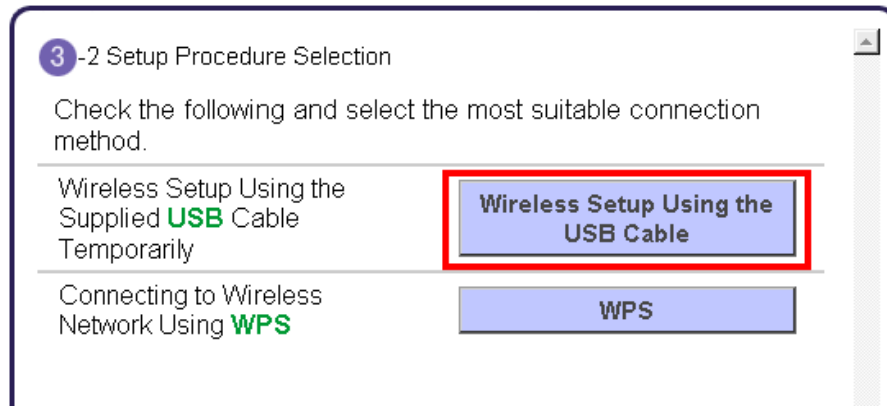
If the **Push Button Method** is not shown on the printer's operation panel (when no WPS access points have been detected), select **Standard setup** on the printer's operation panel, then click **Other Methods** on the **Setup Procedure Selection** screen



If you selected the **Push Button Method**, follow any remaining instructions to complete setup. [Skip ahead to instructions](#)

If you selected **Other Methods**, please continue to the next page for important information

On the **Setup Procedure Selection** screen (3-2) screen, select **Wireless Setup Using the USB Cable**. This is the recommended setup method. You will need to use the supplied USB cable



Continue to follow any on-screen instructions until the **Software Installation List** appears. This screen is shown on the next page

On the **Software Installation List** select any additional* software to install and click **Next**.

***MP Drivers** is required for installation and cannot be deselected. In addition, we recommend installing **MP Navigator EX** and **Easy-PhotoPrint EX** in order to take full advantage of your printer's features.

*If you are using the downloaded '**Mini Master setup**' file to install the printer, only the **MP Drivers** will be installed. Additional software can be downloaded separately. The software can be found in the **Software** section of **Drivers & Software** (the same page where you downloaded the Mini Master setup file)

Software Installation List

The selected software will be installed. Make sure that the software you want to install is selected, and then click [Next].

| | | |
|--|--------|-------------------------------|
| <input checked="" type="checkbox"/> MP Drivers | 250 MB | Drive C: 321431 MB free space |
| <input checked="" type="checkbox"/> On-screen Manual | 40 MB | |
| <input checked="" type="checkbox"/> My Printer | 10 MB | Total used space: 706 MB |
| <input checked="" type="checkbox"/> MP Navigator EX | 80 MB | |
| <input checked="" type="checkbox"/> Speed Dial Utility | 10 MB | |
| <input checked="" type="checkbox"/> Easy-PhotoPrint EX | 270 MB | |
| <input checked="" type="checkbox"/> Solution Menu EX | 20 MB | |
| <input checked="" type="checkbox"/> Adobe RGB (1998) | 1 MB | |
| <input checked="" type="checkbox"/> Easy-WebPrint EX | 25 MB | |
| <input type="checkbox"/> XPS Driver | 120 MB | |

Estimated installation time: 10 to 20 minutes

If you selected the **Push Button Method** to set up your connection, continue to follow any remaining on-screen instructions to finish and exit setup.

If you are using the **Wireless Setup Using the USB Cable** connection procedure, continue to the next page.

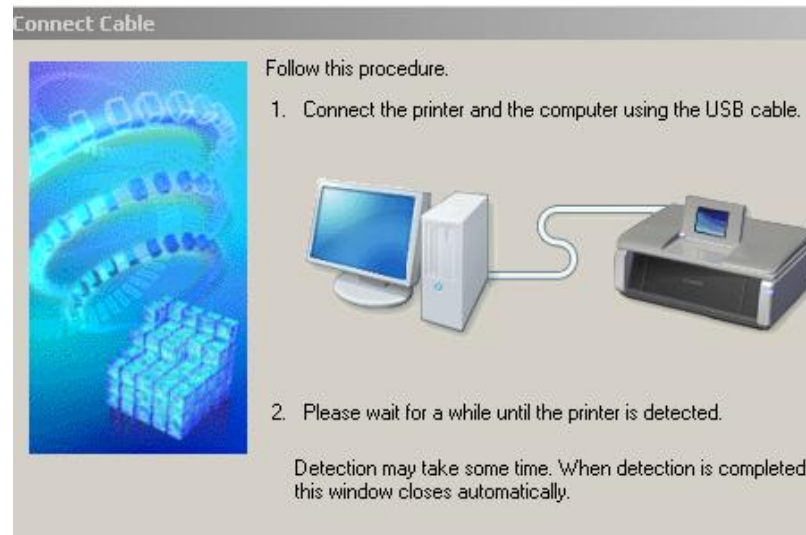
Installing the Drivers & Software

[<< Previous](#)

[Next >>](#)

The drivers and software will install. Continue to follow the on-screen instructions.

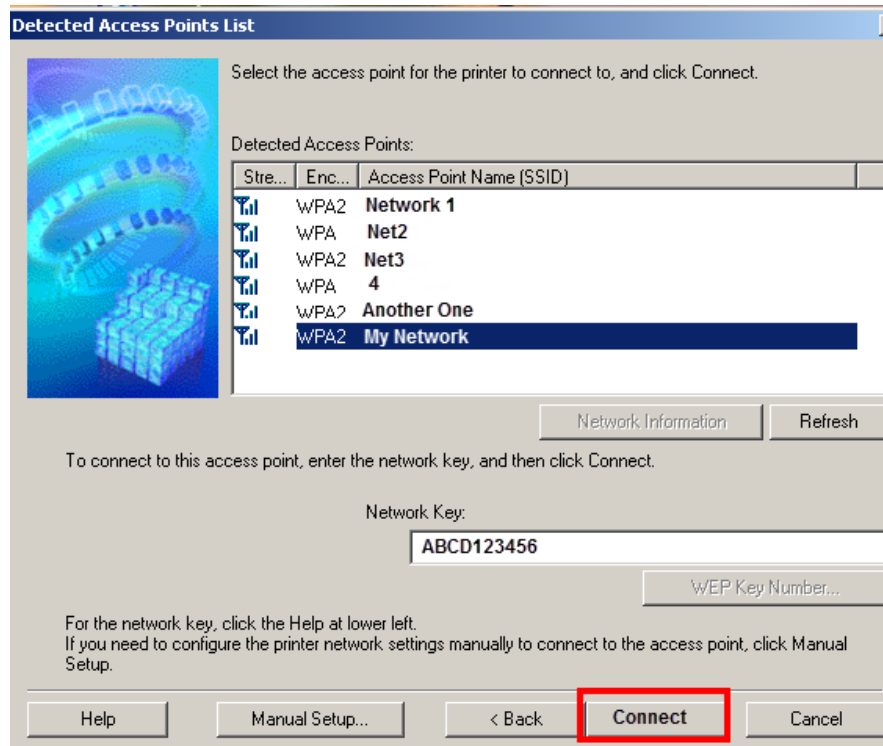
Connect the supplied USB cable to the printer and computer when the **Connect Cable** screen appears



The **Connect Cable** screen closes automatically after the printer is detected

If the **Detected Access Points List*** appears, select the one you wish to connect to, enter the network key and click **connect**.

*This screen normally appears if you have multiple access points or multiple access points exist in your immediate area. For details on how to check the Access Point name/network name (SSID) and network key, refer to the manual supplied with your access point or contact its manufacturer.



If the **Confirm Connection Access Point*** screen appears, verify the information then click **Yes**

*This screen normally appears when you have only one access point



Installing the Drivers & Software

[<< Previous](#)

[Next >>](#)

Disconnect the USB cable when the **Disconnect Cable** screen appears. Click **Next**



Setup is now complete. Follow any remaining instructions to exit the setup program.

Installing the PIXMA MX432 / MX439 on Your Wireless Network

If you can't find your CD-ROM, you may download the MX430 series Mini Master Setup, which includes the same step-by-step installation as the CD-ROM, by following the instructions below:

1. [Click here to access the MX432 Drivers & Software page.](#)
2. Select the operating system of your computer in the dropdown lists (see example below).
3. Expand the 'Drivers' section, if necessary, by clicking the red triangle.
4. Click on the 'MX430 series Mini Master Setup' entry.
5. After reading the license agreement, click 'I Agree – Begin Download' and save the file to your computer.
6. Once the download is complete, double-click the file from its download location to begin the installation.
7. Follow the same instructions as you would if using the Setup CD-ROM. [Click here to go to instructions.](#)

Drivers & Software

Select an Operating System and OS Version from the drop down menu below then click on a category to view the latest supported files for your product. Click on the file description to navigate to download. Click on "I Agree - Begin Download" to start downloading.

[How to find...](#)

Select Language: English Spanish All

Show All

| ▼ Drivers | | Sort by | Most Recent Post Date |
|--|----------|---------|-----------------------|
| File Description | Date | Size | |
| <input type="checkbox"/> MX430 series Mini Master Setup (Windows 8/8 x64... | 10/12/12 | 21 | |
| <input type="checkbox"/> MX430 series MP Driver Ver. 1.01 (Windows 8/8 x... | 10/05/12 | 15 | |
| <input type="checkbox"/> MX430 series XPS Printer Driver Ver. 5.55a (Win... | 10/05/12 | 14 | |

Free Manuals Download Website

<http://myh66.com>

<http://usermanuals.us>

<http://www.somanuals.com>

<http://www.4manuals.cc>

<http://www.manual-lib.com>

<http://www.404manual.com>

<http://www.luxmanual.com>

<http://aubethermostatmanual.com>

Golf course search by state

<http://golfingnear.com>

Email search by domain

<http://emailbydomain.com>

Auto manuals search

<http://auto.somanuals.com>

TV manuals search

<http://tv.somanuals.com>