

Canon

C

L
O
R
I
A
S
E
R
C
O
P
I
E
R

CLC 1100

DESIGNED WITH YOU IN MIND.



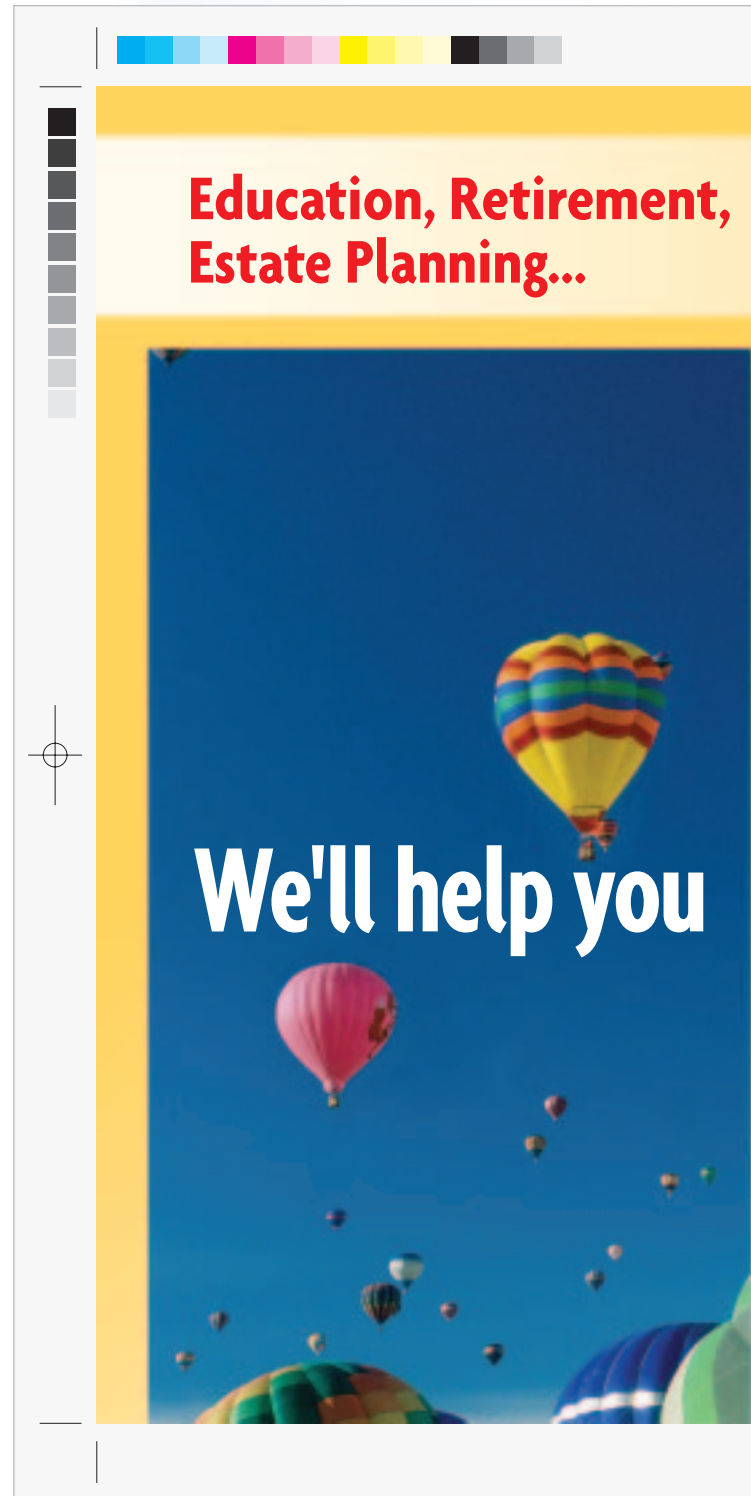
CANON: THE NAME YOU TRUST.

Canon's color laser copiers are known throughout the world as feature-driven copiers with unrivalled color accuracy and unsurpassed reliability. The new CLC 1100 is no exception. It offers mid-volume production departments a list of user-friendly features that have previously been available only with higher-end color copiers.

Now designers, publishers, marketers, even Print-for-Pay shops can enjoy superior image quality, increased paper capacity, and boosted productivity. The CLC 1100 outputs 8.5 color copies per minute—in a resolution that is the visual equivalent of 800 x 400 dpi. It accommodates a wide range of paper stock, including 12" x 18" sheets (for full bleed 11" x 17" images). And it reproduces colors brilliantly. The CLC 1100 uses Canon's exclusive Finer, Brighter (FB-) Toner for richer, more vibrant colors, and is designed with Canon's Advanced Mapping Technology for accurate RGB to CMYK conversions.

Moreover, the CLC 1100 is as beneficial to the production manager as it is to the artist. It's fast, it's reliable, and it connects easily to a Canon ColorPASS® color server for access to extensive document- and color-management functions. With the CLC 1100, it's easy to manipulate color, text, and graphics, either through the optional Editor when copying, or through ColorWise Pro Tools when printing (via your desktop or remote location)!

The CLC 1100 is designed with you in mind. It's ideal for mid-volume situations—and it's from Canon, the name the world has come to trust in color laser copiers.





get your future



off the ground.



BRIGHTON
FINANCIAL GROUP



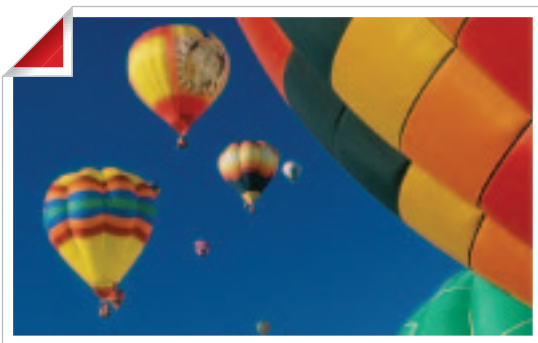
THE CLC 1100: IMPROVING ON PERFECTION.

Canon has designed the CLC 1100 to handle all mid-volume copy and print jobs quickly and reliably. Through a combination of faster image processing and fusing technologies, the CLC 1100 delivers more than eight color copies per minute (and 42 black-and-white copies per minute). Canon's Accelerated Paper Feeding Method (APFM) has reduced the first-copy-out time—from any paper drawer—to 21 seconds for color and 9.6 seconds for black-and-white copies.

Most important, the CLC 1100 is as reliable as it is quality-driven. Its design, parts, and technology have all been engineered with a standard normally reserved for high-volume environments. The result is a consistent, steady performer.

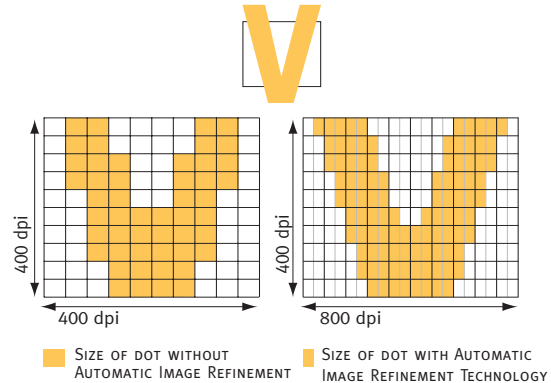
Brighter Colors.

Canon has designed the CLC 1100 to offer you the widest range of color with the most accurate reproduction of colors and hues. Consider Canon's use of FB-Toner. Designed specifically for the CLC 1100 Series, FB-Toner is comprised of particles much smaller than those commonly used. As a result, the CLC 1100 offers a more precise placement of toner—and a broader palette of colors—than conventional machines. And your RGB to CMYK conversions will also be accurate because Canon has armed the CLC 1100 with its Advanced Mapping Technology. So you'll see all the details and colors found in your original art—on each and every copy.



Sharper Curves.

The CLC 1100 also boasts sharper text, smoother curves, and unrivalled color output because Canon has designed the machine with its exclusive Color Automatic Image Refinement technology. This advanced algorithm enhances 400 x 400 dpi dramatically, and delivers the visual equivalent of 800 x 400 dpi output.



Improved Accuracy.

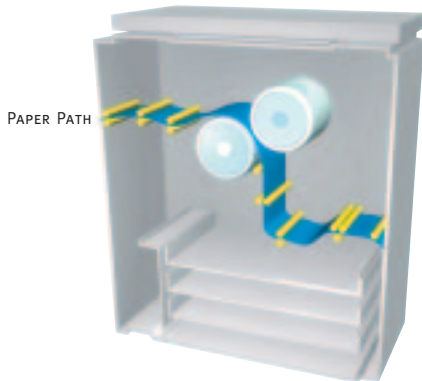
Canon has engineered the CLC 1100 to employ a Direct Injection Transfer System, so each toner color is transferred to the paper in one single step. As a result, the CLC 1100 offers you improved color accuracy, maintaining the highest image quality regardless of environmental conditions.



Increased Flexibility.

The people at Canon know that flexibility is a key issue with customers—that's why they've designed the CLC 1100 to support papers of various weights, sizes, and grades. The CLC 1100 includes Canon's new Transfer Drum Attraction System (TDAS), which lets you work with paper stock up to 110 lb. Index. And it has an expanded output capability—the CLC 1100 lets you work with paper up to 12" x 18" in size. (So now designers can output a full bleed 11" x 17" image complete with crop marks!) You can even choose to increase productivity further: just add the optional 2,500-sheet Paper Deck, and you'll have a paper capacity of 3,850 sheets.

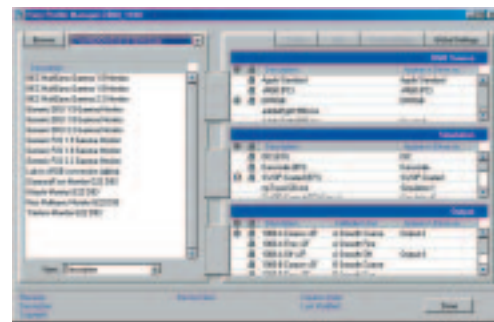
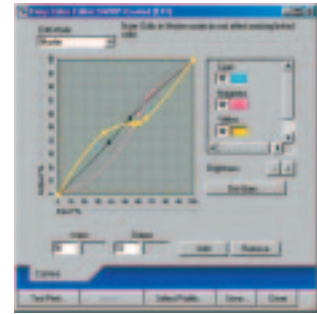
TRANSFER DRUM ATTRACTION SYSTEM (TDAS)



CANON TECHNOLOGY: CONNECTING YOU TO NEW PRINTING OPTIONS.

Canon has engineered the CLC 1100 to offer you new levels of color quality, reliability, and flexibility. It's an ideal mid-volume solution for virtually any environment, and it's a high-speed file processing and printing system in waiting. Simply connect the CLC 1100 to a Canon ColorPASS color server for immediate access to intelligent color-management functions, document-manipulation capabilities, and remote printing options. It's never been easier because with NetWise™ 2 architecture, you can seamlessly integrate the ColorPASS color server into any network environment—letting you manage jobs with the click of the mouse. Just point and print.

ColorWise® 2 lets you control your colors—regardless of the application or your experience level. For the novice, it is a complete set of automatic and accurate color-management tools. For the professional, it's even more. With ColorWise 2, you can control SWOP standards, press simulations, ICC profiles and more. It's an open system, so it allows for precise color matching through ColorWise Pro Tools (including Fiery® Print Calibrator™, Color Editor, and ICC Profile Manager).



Through the Canon ColorPASS color server, you'll also have an advanced set of document-management features at your fingertips. Change documents. Sort them. Staple them. Insert slip-sheets. You'll create your documents the way in which you choose—right from your desktop! Or you can handle it remotely across your own intranet via WebTools™ or Fiery Link™.



THE CLC 1100: PRODUCTIVITY IS YOUR CHOICE.

Editor-F1

When configured with the Editor, the CLC 1100 accepts document and color adjustments directly—without the need for desktop applications. As a result, users can walk up to the CLC 1100 and manipulate images, alter colors, adjust sizes—you name it.



Recirculating Document Feeder-E3

Configuring the CLC 1100 with the optional RDF is one of the quickest ways to boost your productivity. The RDF accommodates up to 100 sheets of letter, letter-R, or statement originals—or 50 sheets of ledger or legal paper (up to 110 lb. Index stock).



Paper Deck-E1

Adding the 2,500-sheet Paper Deck to the CLC 1100 boosts its paper capacity to 3,850 sheets—instantly.



Stapler Sorter-F2

The 20-bin Stapler Sorter, with the standard Buffer Pass Unit, provides the CLC 1100 with an increased paper capacity, additional sorting capabilities, and three stapling options: Corner, Book, or Single Stapling. Most important, it collates and staples sets of documents—quickly and accurately.



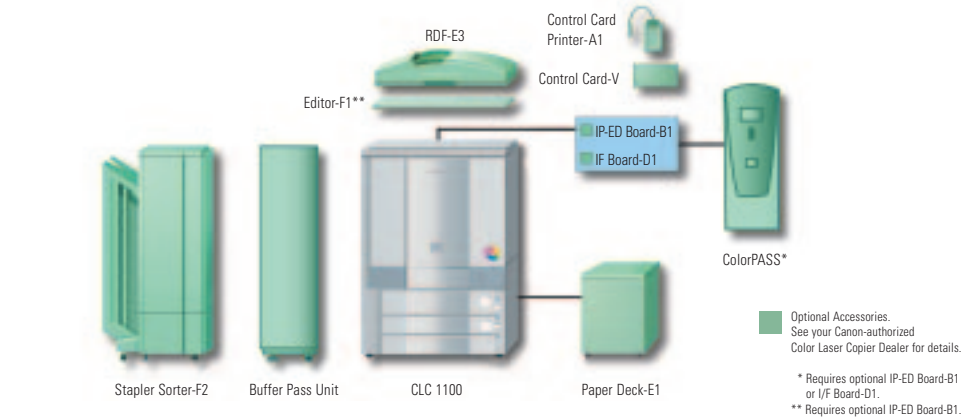
COLOR LASER COPIER 1100

CLC 1100 Specifications

Technology:	Color Laser Electrophotographic
Acceptable Originals:	Sheets, Books, Solid Objects
Maximum Original Size:	11" x 17"
Copy Sizes	
Drawer-feeding:	Letter (8-1/2" x 11") Legal (8-1/2" x 14") Ledger (11" x 17")
Optional Paper Deck:	Letter (8-1/2" x 11")
Stack Bypass:	7.16" x 7.16" to 12" x 18"
Magnification	
Standard Mode:	100%
Preset Reduction:	25%, 64%, 73%, 78%
Preset Enlargement:	121%, 129%, 200%, 400%
Zoom Mode:	25% - 400% (in 1% increments)
Copy Speeds	
Letter:	8.5 cpm (Full 4-color) 42 cpm (B&W)
Letter-R, Legal, Ledger:	4.2 cpm (Full 4-color) 21 cpm (B&W)
First-copy Time:	21 Seconds (Full 4-color) 9.6 Seconds (B&W)
Warm-up time:	Approx. 8 Minutes & 30 Seconds or Less (68° F/20° C)
Resolution:	400 dpi (8-bit), Equivalent Appearance of 800 x 400 dpi (Color Automatic Image Refinement)
Halftone:	256 Gradations
Copy Exposure:	Automatic Exposure, 9/17 Gradations (Switchable)
Paper-feeding:	Two Front-loading Paper Drawers plus Stack Bypass Standard: 2 x 550 + 250 Optional Paper Deck: 2,500 Sheets
Acceptable Paper Weights	
Drawer:	17 lb. to 28 lb. Bond
Bypass:	17 lb. Bond to 110 lb. Index
Maximum Paper Capacity:	3,850 Sheets (with Optional Paper Deck)
Multiple Copies:	1 to 100
Duplexing:	Manual
Power Requirements:	115V, 15A, 60Hz
Dimensions (H x W x D):	39.37" x 30.24" x 30.47" (1,000mm x 768mm x 774mm)
Weight:	600.7 lb (272.5kg)

CLC 1100 Editing Features *

Zoom Mode:	XY Independent Zoom, Zoom Program, Multiple Enlargement, Image Combination, Entire Image
Color Balance:	One-touch Color, Color Balance, Saturation Adjustment, Hue Adjustment, Density Fine Adjustment, Sharpness
Color Creation:	Single color, Color Gradation, Color Filter, Coloring, Full 4- and 3-color, Base Color, Blue Background, Color Conversion
Image Creation:	Negative/Positive, Mirror Image, Text Editing, Special Effects, Image Repeat, Slanted Image, Texture



Optional Accessories. See your Canon-authorized Color Laser Copier Dealer for details.
* Requires optional IP-ED Board-B1 or I/F Board-D1.
** Requires optional IP-ED Board-B1.

Area Designation:	Framing, Blanking, Multiple Editing Area type: Rectangular or Non-rectangular
Composition:	Image Composition, Character Composition, Offset Plate Original Text, Text/Printed Image, Text/Photo, Photo, Printed Image, Map, Color Copy Original
Image Adjustment:	Erase Background, Second Side Background Elimination, Black Adjustment, Complexion Adjustment Mode
Additional Editing Features:	Two-page Separation, Sections, Cover Mode, Transparency Interleaving, Frame Erase, Margin, Shift

*Some Functions May Require Optional IP-ED Board-B1, Editor-F1, and RDF-E3

Recirculating Document Feeder-E3

Acceptable Original Sizes:	Statement to Ledger
Acceptable Paper Weights:	
RDF:	17 lb. to 32 lb. Bond
SSDF:	10 lb. to 110 lb. Index
Original Capacity:	100 Sheets/Letter, Letter-R, Statement (20 lb. Bond)
Power Consumption:	120W/60Hz
Power Requirements:	DC 24V Directly from the Copier
Dimensions (H x W x D):	6-7/8" x 25-3/8" x 21-1/4" (174mm x 643mm x 539mm)
Weight:	52.9 lb. (24kg)

Editor-F1

Area Designation:	Up to 200 Areas
Features:	Framing, Blanking, Area Editing

Paper Deck-E1

Copy Sizes:	Letter (8-1/2" x 11")
Acceptable Paper Weights:	17 lb. to 28 lb. Bond
Capacity:	2,500 Sheets

Stapler Sorter-F2 (Requires Buffer Pass Unit)

Number of Bins:	20 + 1 Non-sort
Acceptable Paper Sizes:	Statement to 12" x 18"
Maximum Capacity Per Bin	
Sort Mode:	50 Sheets (Letter, Letter-R)
Staple Mode:	30 Sheets (Letter, Letter-R)
Acceptable Paper Weights:	17 lb. Bond to 110 lb. Index
Staple Sizes:	Letter, Letter-R, Legal, Ledger
Staple Capacity:	Up to 30 Sheets (20 lb. Bond)
Power Consumption:	110W or Less
Power Requirements:	DC 24V Directly from the Copier
Dimensions (H x W x D):	38-7/8" x 32-5/8" x 24" (966mm x 828mm x 609mm)
Weight:	Approx. 176 lb. (80kg)

Additional Optional Accessories

ColorPASS Color Server for the CLC 1100**
IP-ED Board-B1
I/F Board-D1
Control Card-V
Control Card Printer-A1

**Requires Optional IP-ED Board-B1 or I/F Board-D1.

Canon KNOW HOW™

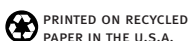
Fiery and ColorWise are registered trademarks and NetWise, Fiery Print Calibrator, Fiery Link and WebTools are trademarks of Electronics for Imaging, Inc. in the U.S. Patent and Trademark Office and in certain other foreign jurisdictions. Canon and ColorPASS are registered trademarks, and Canon Know How and the Genuine logo are trademarks of Canon Inc. IMAGEANYWARE is a service mark of Canon U.S.A., Inc. All other terms and product names may be trademarks or registered trademarks of their respective owners, and are hereby acknowledged.

All specifications subject to change without notice.

Federal Law prohibits copying of certain documents. Violators may be subject to penalties. We suggest that you check with your own legal counsel. Canon U.S.A., Inc. and Canon Canada, Inc. intend to cooperate with Law Enforcement Agencies in connection with claims of unauthorized copying.

0025W378

0901-CLC1100-100M



Free Manuals Download Website

<http://myh66.com>

<http://usermanuals.us>

<http://www.somanuals.com>

<http://www.4manuals.cc>

<http://www.manual-lib.com>

<http://www.404manual.com>

<http://www.luxmanual.com>

<http://aubethermostatmanual.com>

Golf course search by state

<http://golfingnear.com>

Email search by domain

<http://emailbydomain.com>

Auto manuals search

<http://auto.somanuals.com>

TV manuals search

<http://tv.somanuals.com>