

**CANON**

**FAX-L295/L290**

**SOFTWARE**

**MANUAL**

## For Windows 2000 installation.

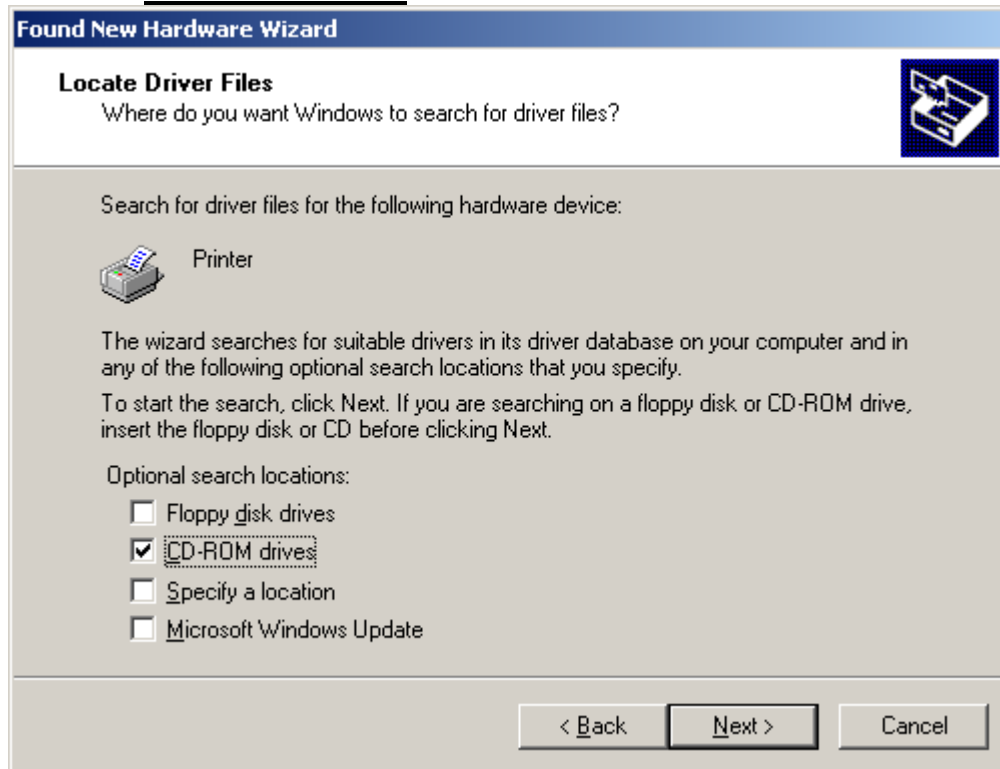
1. When the [Found New Hardware Wizard] appears during the setup, and prompts you for additional information as shown below, conduct the following;
2. Click 'Next'



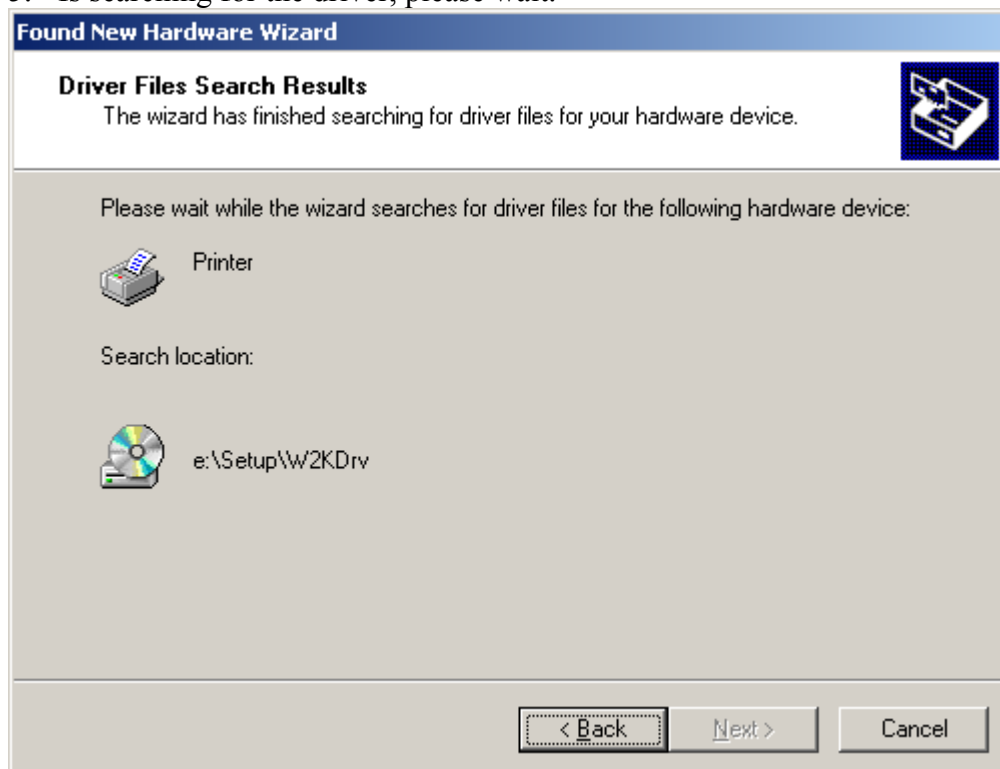
3. Select 'Search for a suitable driver for my device [recommended]' and click 'Next'.



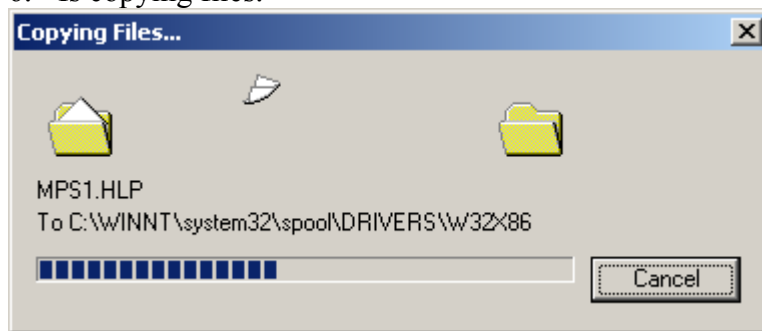
4. Select '**CD-ROM drivers**' and click 'Next'



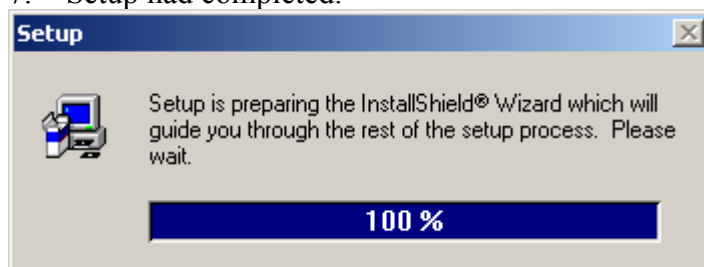
5. Is searching for the driver, please wait.



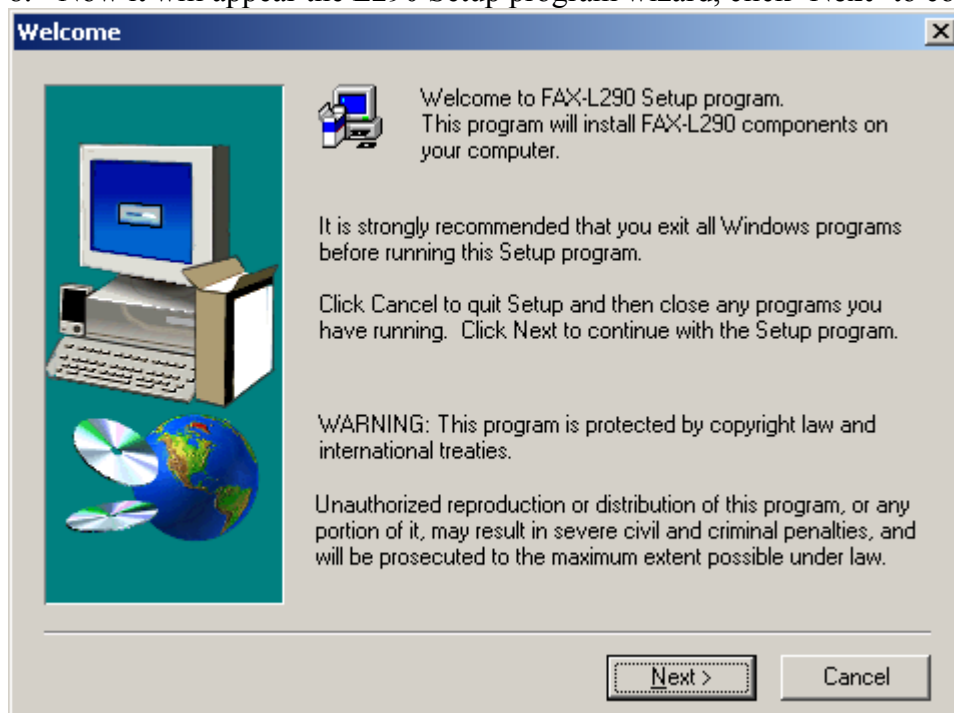
6. Is copying files.



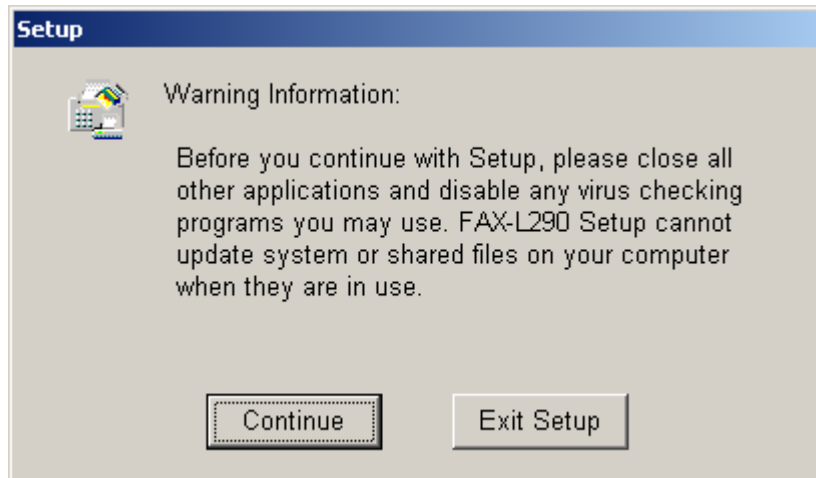
7. Setup had completed.



8. Now it will appear the L290 Setup program wizard, click 'Next' to continue.



9. Click '**Continue**'.

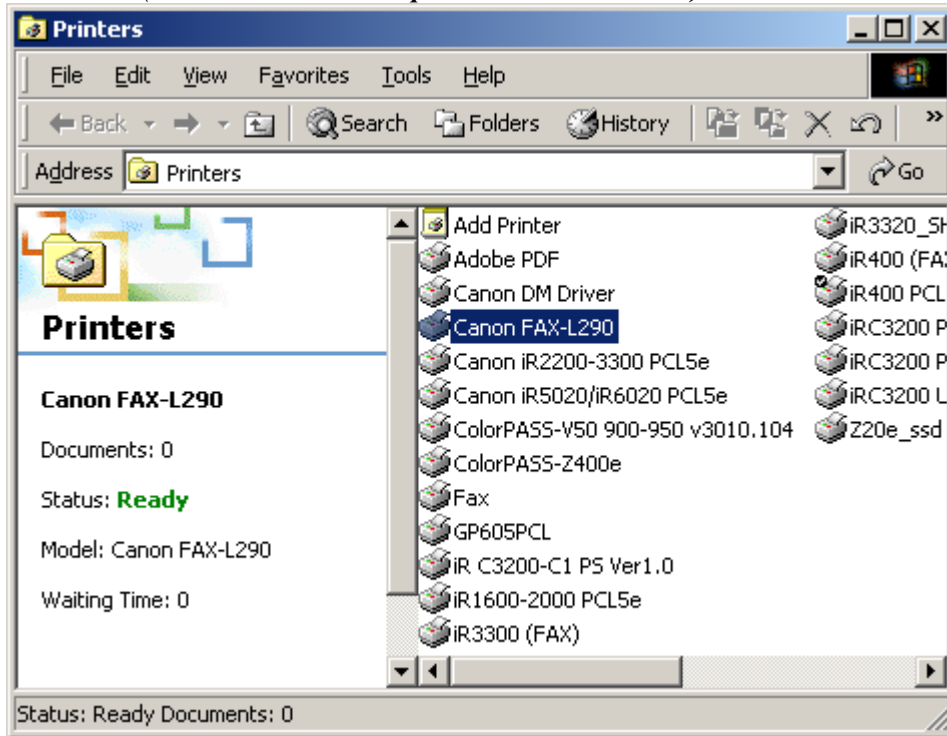


10. Click '**Finish**' to complete the setup.

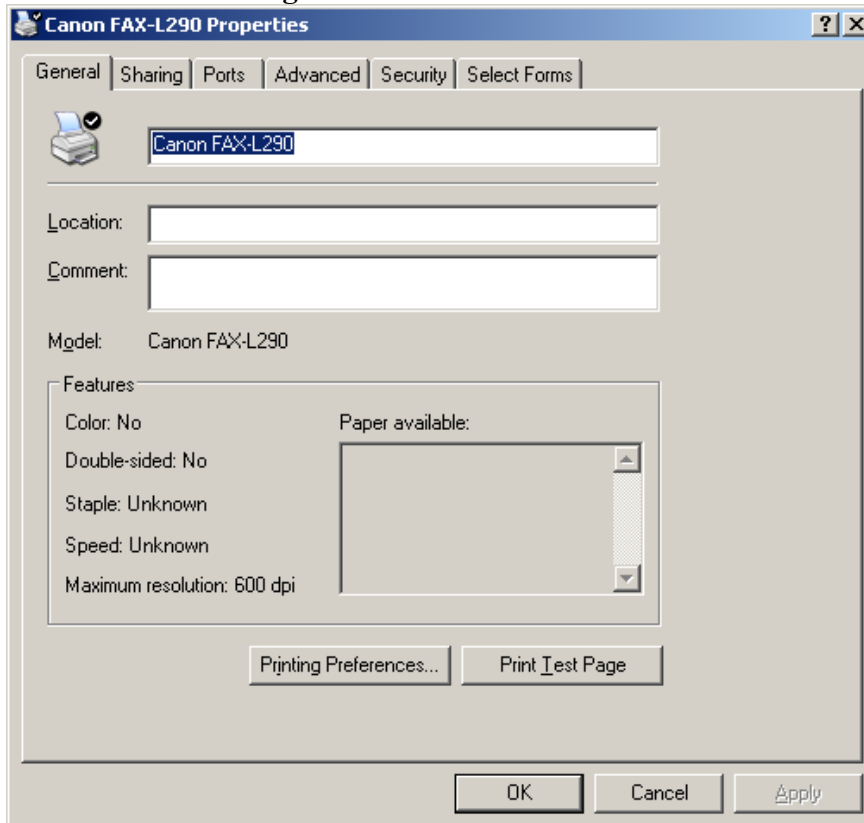


11. Go to 'Start' -> 'Setting' - 'Printers', you will see Canon Fax\_L290 icon. Highlight and right click on the icon, select 'Properties'.

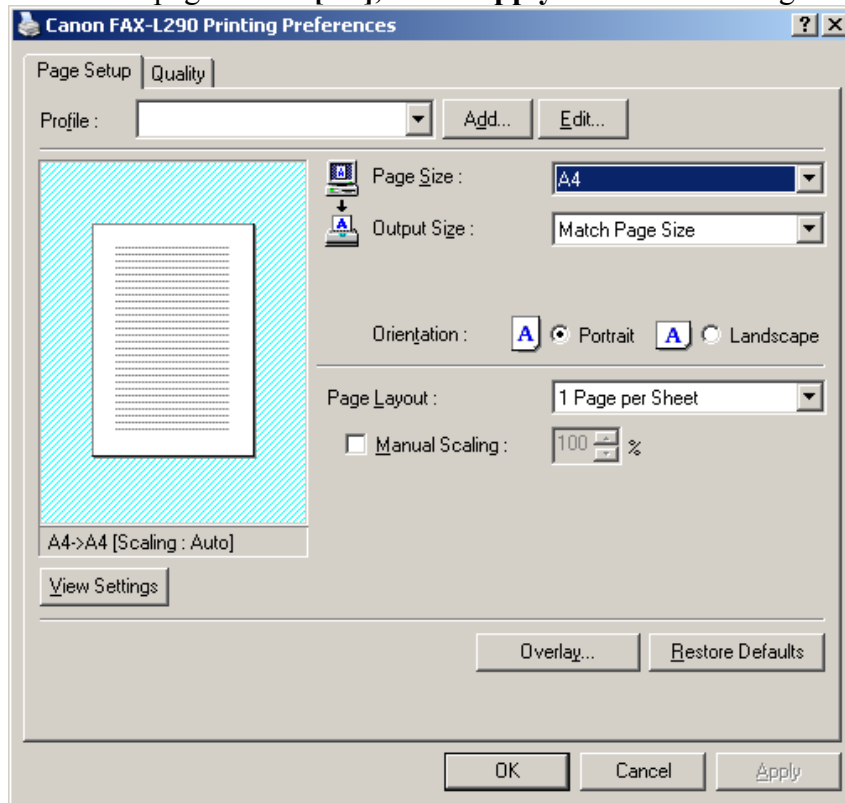
(Ps: FAX-L290 is compatible with FAX-L295)



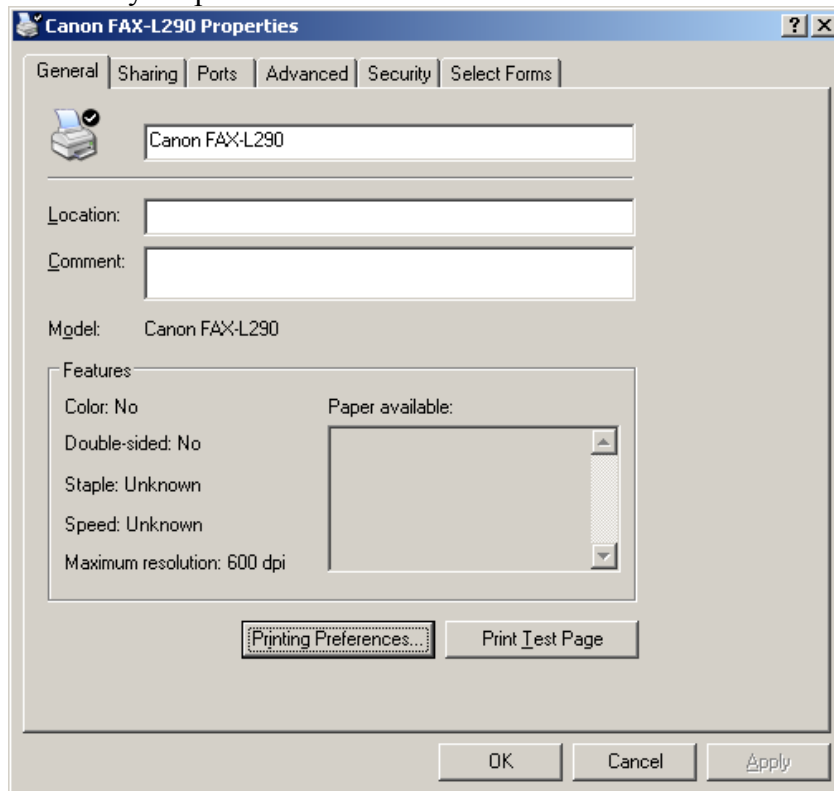
12. Click on 'Printing Preferences' icon.



13. Set the page size to [A4], click 'Apply' to save the changes and click 'OK'



14. You will see this screen, click on the 'Print Test Page' and collect the test page from your printer.



## Free Manuals Download Website

<http://myh66.com>

<http://usermanuals.us>

<http://www.somanuals.com>

<http://www.4manuals.cc>

<http://www.manual-lib.com>

<http://www.404manual.com>

<http://www.luxmanual.com>

<http://aubethermostatmanual.com>

Golf course search by state

<http://golfingnear.com>

Email search by domain

<http://emailbydomain.com>

Auto manuals search

<http://auto.somanuals.com>

TV manuals search

<http://tv.somanuals.com>