



Compact Photo Printer CP-330/CP-220 Printer Driver

User Guide **Macintosh**



Contents

Safety Precautions	4
Read This First	5
About the Manuals	5
Printing Flow Diagram	6
About the Connection Cable	7
Installing the Printer Driver	8
Installing	8
Uninstalling	11
Turning On the Printer	14
Connecting the Printer to Your Computer	15
Printing	17
With Mac OS 9.0 - 9.2	18
Selecting a Printer with the Chooser	18
Starting ImageBrowser	18
Selecting an Image for Printing	19
Selecting a Layout Type	20
Setting the Printer Driver for Printing	23
Printing Duplicate Images on an 8-Label Sheet	27
Printing Different Images on an 8-Label Sheet	30
Merging Images to Print a Panorama	32
Printing Part of an Image (Trimming)	33
Printing with Image Quality Correction	35
With Mac OS X	37
Starting ImageBrowser	37
Selecting an Image for Printing	37
Selecting a Layout Type	39
Setting the Printer Driver for Printing	42
Printing Duplicate Images on an 8-Label Sheet	46
Printing Different Images on an 8-Label Sheet	49
Merging Images to Print a Panorama	51
Printing Part of an Image (Trimming)	52
Printing with Image Quality Correction	54

Appendices	56
About the Print Area and Pixels	56
Print Area	56
Number of Pixels	58
Troubleshooting	59
Error Messages	60



Safety Precautions

The precautions noted within this guide are intended to instruct you in the safe and correct use of the products and to prevent injuries or damage to yourself, other persons and property. Please read and ensure that you understand them before proceeding to other sections of the guide.



Warning

This symbol indicates topics that could lead to death or serious injury if ignored or handled incorrectly.



Warning

Do not play the supplied CD-ROM(s) in any CD player that does not support data CD-ROMs. Playing the CD-ROM(s) in an audio CD player (music player) could damage the speakers. It is also possible to suffer from hearing loss from listening with headphones to the loud sounds of a CD-ROM played on a music CD player.

Disclaimer

- While every effort has been made to ensure that the information contained in this guide is accurate and complete, no liability can be accepted for any errors or omissions. Canon reserves the right to change the specifications of the hardware and software described herein at any time without prior notice.
- No part of this guide may be reproduced, transmitted, transcribed, stored in a retrieval system, or translated into any language in any form, by any means, without the prior written permission of Canon.
- Canon makes no warranties for damages resulting from corrupted or lost data due to a mistaken operation or malfunction of the camera, the software, the CompactFlash™ cards (CF cards), personal computers, peripheral devices, or use of non-Canon CF cards.

Trademark Acknowledgments

- Canon is a trademark of Canon Inc.
- iBook and iMac are trademarks of Apple Computer, Inc.
- Macintosh, PowerBook, Power Macintosh and QuickTime are trademarks of Apple Computer Inc., registered in the United States and other countries.
- Other names and products not mentioned above may be registered trademarks or trademarks of their respective companies.

Copyright © 2004 Canon Inc. All rights reserved.

Symbols Used in This Document



Indicates important items or prohibited actions that should always be observed when operating the machine. These should always be read to avoid damage to the machine or improper operation.



Indicates items for reference or supplementary information that should be noted by users.



Read This First

About the Manuals

This user guide describes how to connect the printer to your computer and print images.



Printer
(CP-330/CP-220)
User Guide

Provides printer handling notes, safety precautions, printer preparation, names of parts and other information necessary for operating the printer. Please read before using the printer.



This user guide



Describes how to connect the printer to your computer, printer driver installation, functions and operating procedures.

Explanations for Mac OS X are based on Mac OS X v10.1. If you are using another version of Mac OS X, the actual screen contents and procedures may vary slightly from those shown.

Detailed explanations of operating procedures are given in the [Help] accompanying each software application.

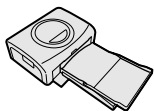


If a problem occurs, refer to the following:

- Trouble with the printer itself:  See the *Printer User Guide*.
- Printing problems:  See this user guide.

Printing Flow Diagram

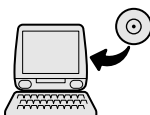
Follow the steps outlined below to prepare the printer and install the necessary software on your computer to enable printing.



Prepare the printer.

Insert paper cassette and ink cassette.

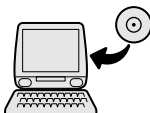
☞ See the *Printer User Guide*.



Install the necessary software on your computer.

Install the necessary software on your computer from the CP Printer Solution disk.

☞ See the *Printer User Guide*.



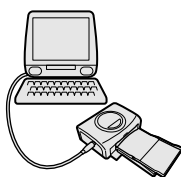
Install the printer driver.

Install the printer driver onto your computer.

☞ See *Installing the Printer Driver* (⇒ p.8) in this user guide.



To uninstall the printer driver, ☞ see *Uninstalling* (⇒ p.11) in this user guide.



Turn the printer's power on.

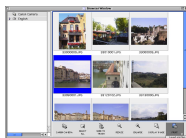
Turn the printer's power on and connect the printer to your computer.

☞ See *Turning On the Printer* (⇒ p.14), *Connecting the Printer to Your Computer* (⇒ p.15) in this user guide.



Continued next page.





Select an image to print.

Start ImageBrowser and select an image to print.

 See

Starting ImageBrowser (Mac OS 9.0 - 9.2 ➔ p.18, Mac OS X ➔ p.37),
Selecting an Image for Printing (Mac OS 9.0 - 9.2 ➔ p.19, Mac OS X ➔ p.37)
in this user guide.



Printing.

Print on standard sheet or full-size labels.

 See

Selecting a Layout Type
(Mac OS 9.0 - 9.2 ➔ p.20, Mac OS X ➔ p.39)
Setting the Printer Driver for Printing
(Mac OS 9.0 - 9.2 ➔ p.23, Mac OS X ➔ p.42)
in this user guide.



To print an 8-label sheet,

 see

Printing Duplicate Images on an 8-Label Sheet
(Mac OS 9.0 - 9.2 ➔ p.27, Mac OS X ➔ p.46) or
Printing Different Images on an 8-Label Sheet
(Mac OS 9.0 - 9.2 ➔ p.30, Mac OS X ➔ p.49) in this user guide.



About the Connection Cable

The printer can be connected to a computer using a standard USB cable.
For details, see *Specifications* (Interface) in the *Printer User Guide*.

Installing the Printer Driver

This section describes how to install the printer driver on your computer.



For details on how to uninstall the printer driver, see [Uninstalling](#) (→ p.11)

Installing

- 1 Close any programs that are running.
- 2 Place the Canon CP Printer Solution Disk in the CD-ROM drive.
- 3 With Mac OS 9.0 - 9.2, double-click the [Canon CP Printer Installer] icon in the [Mac OS 9] folder on the CD-ROM.
With Mac OS X, double-click the [Canon CP Printer Installer] icon in the [Mac OS X] folder on the CD-ROM.

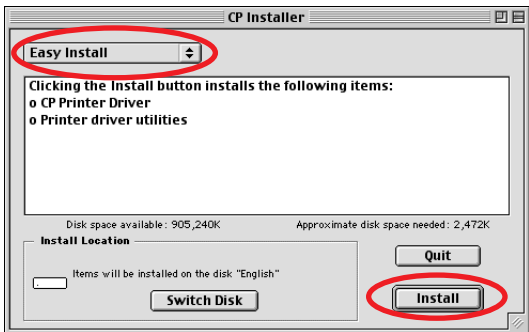
The installer panel appears.



- 4 Click the CP Printer Driver [Install] button.
- 5 Read the software license agreement. If you agree to all of its conditions, click the [Agree] button.

The installer starts.

6 Select [Easy Install], and then click the [Install] button.

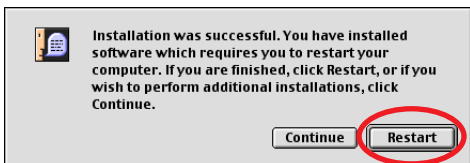


7 Click the [Continue] button to automatically close any applications other than the installer.



8 Follow the messages on the screen to proceed.

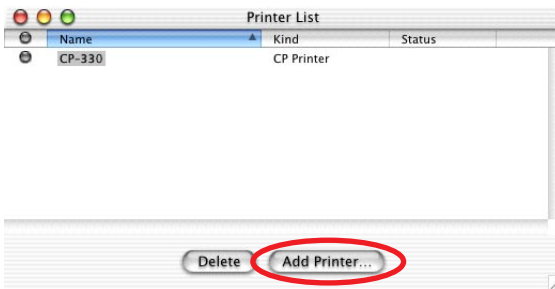
9 When installation is completed, click the [Restart] button. Before the printer driver will operate, you must restart your computer.



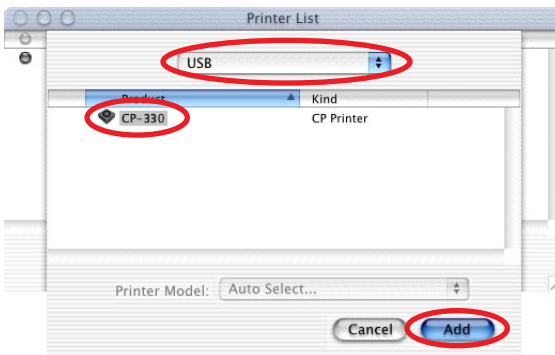
■ With Mac OS X

Continuing from the above procedure, do the following:

- 1) Turn the printer's power on. (⇒ p.14)
- 2) After your computer restarts, connect the printer to computer with the USB cable.
For information on how to connect the printer, see [Connecting the Printer to Your Computer](#) (⇒ p.15).
- 3) Double-click the hard disk icon where Mac OS X is installed.
- 4) Double-click the [Applications] folder.
- 5) Double-click the [Utilities] folder.
- 6) Double-click the [Print Center] or [Print Setup Utility] icon.
The Printer List window appears.
- 7) Click the [Add Printer] or [Add] button.



- 8) Select [USB], select the printer name, and then click the [Add] button.



- 9) Close the window by clicking  in the upper left-hand corner.

Uninstalling

To uninstall the printer driver, use the installer.



Uninstall the printer driver if it is no longer needed, or if a problem occurs and uninstalling becomes necessary. Note that if you uninstall the printer driver, you will no longer be able to use the printer to print.

Important

Be sure to follow the procedures described in this section to uninstall the printer.

- 1 Close any programs that are running.**
- 2 Place the Canon CP Printer Solution Disk in the CD-ROM drive.**
- 3 With Mac OS 9.0 - 9.2, double-click the [Canon CP Printer Installer] icon in the [Mac OS 9] folder on the CD-ROM.
With Mac OS X, double-click the [Canon CP Printer Installer] icon in the [Mac OS X] folder on the CD-ROM.**

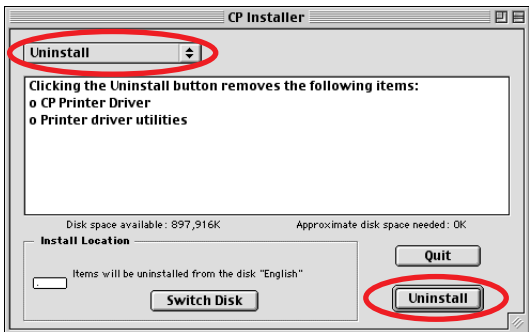
The installer panel appears.



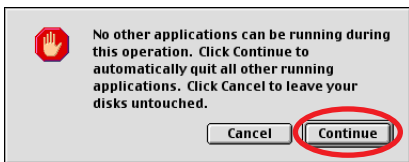
- 4 Click the CP Printer Driver [Install] button.**
- 5 Read the software license agreement. If you agree to all of its conditions, click the [Agree] button.**

The installer starts.

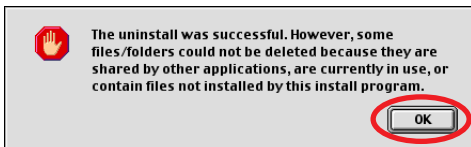
6 Select [Uninstall], and then click the [Uninstall] button.



7 Click the [Continue] button to automatically close any applications other than the uninstaller.



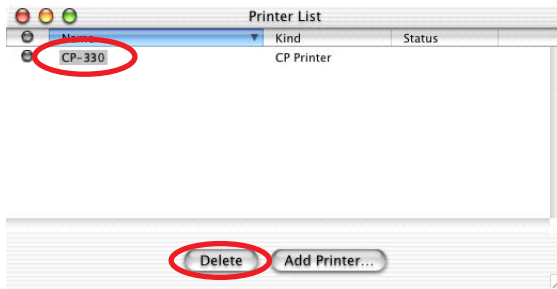
8 After uninstallation has been completed, click the [OK] button.



■ With Mac OS X

To continue, you must do the following:

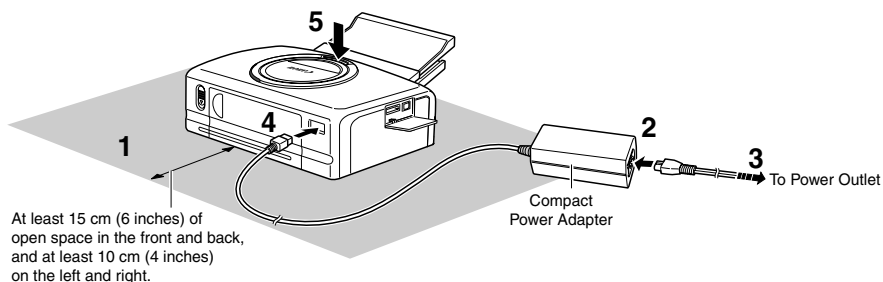
- 1) Double-click the hard disk icon where Mac OS X is installed.
- 2) Double-click the [Applications] folder.
- 3) Double-click the [Utilities] folder.
- 4) Double-click the [Print Center] or [Print Setup Utility] icon.
The Printer List window appears.
- 5) Select the printer you uninstalled, and then click the [Delete] button.



- 6) Close the window by clicking  in the upper left-hand corner.



Turning On the Printer



Refer to the above figure during the following procedure (the numbers in the figure correspond to the steps in the procedure).

1 Place the printer on a flat surface.

When printing, the paper temporarily projects out from the rear, so allow a clear space of at least 15 cm (6 inches) in the back.

2 Connect the supplied power cord to the CA-CP100 Compact Power Adapter (also supplied).

3 Plug the power cord into a power outlet.

4 Connect the Compact Power Adapter cable to the printer.

At this point the CP-220 is ON, so the printer's indicator lights green.

5 Press the ON/OFF button (only on the CP-330).

When the printer is turned on, the printer's indicator lights green.



To Turn the Printer Off

- With CP-330: Press the ON/OFF button, releasing it when the indicator turns off.
- With CP-220: Unplug the Compact Power Adapter from the printer (the indicator turns off).



- When making connections, confirm that the shape of the plug matches the shape of the socket on the device being connected.
- The power outlet where the printer's power plug is connected should be located where the plug can be easily removed if a problem occurs.

Connecting the Printer to Your Computer

■ Notes about connection

- Using the USB cable, be sure to connect the printer directly to your computer. If you connect it via a USB hub, the printer may not function properly.
- Do not use the printer together with other USB devices (except a USB mouse or keyboard); otherwise the printer may not function properly. If this happens, disconnect the other USB devices from your computer and then reconnect the printer.
- Do not connect two or more direct print compatible printers (all CP series printers) to the same computer; otherwise the printers may not function properly.



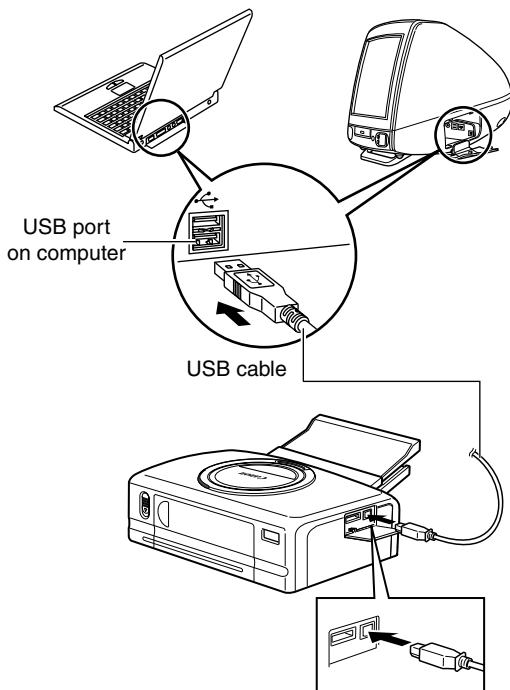
Do not put your computer into the sleep mode while the printer is connected to a USB port.

If you accidentally do so, do not disconnect the USB cable from your computer while it is in the sleep mode; instead, leaving the USB cable connected, first return your computer to its normal mode. If you remove the USB cable while your computer is in the sleep mode, your computer may not be able to return to its normal mode. For details on your computer's sleep mode, refer to the documentation provided with your computer.



1 Connect one end of the USB cable to the USB port on the printer, and the other end to a USB port on your computer.

- There is no need to turn off the printer or your computer.
- When connecting the printer to your computer, make sure the connectors on the ends of the USB cable match the ports on the printer and your computer.
- For the location and direction of your computer's USB port, refer to the documentation provided with your computer.



- If your computer has more than one USB port, it does not matter which USB port you use to connect the printer.
- There is no need to turn off the printer or your computer when disconnecting the USB cable.

Printing

This section describes how to use ImageBrowser to print images with the printer.

ImageBrowser is an application included on the Canon CP Printer Solution Disk. This application makes it easy to print.

Before printing, verify that the printer is on (the indicator on the printer is green), and that the printer is properly connected to your computer with a USB cable.



Printers and computer displays use different color reproduction methods, and lighting conditions and display settings affect the appearance of colors on your computer's display. Therefore, the colors in prints may differ from what you see on the screen. This is not a printer malfunction.




For information on how to install ImageBrowser, see the [Printer User Guide](#).

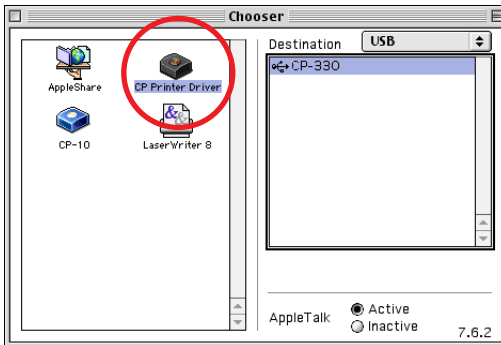
The screen examples and descriptions given in this section are for the CP-330. Operate the CP-220 in the same way.



With Mac OS 9.0 - 9.2

Selecting a Printer with the Chooser

- 1 Open the  (Apple) menu and select ► [Chooser].
- 2 Click the [CP Printer Driver] icon.
If the printer is connected, it appears in the [Destination] list.



- 3 Click the CP-330 or CP-220 in the [Destination] list, then close the Chooser dialog by clicking  in the upper left-hand corner.

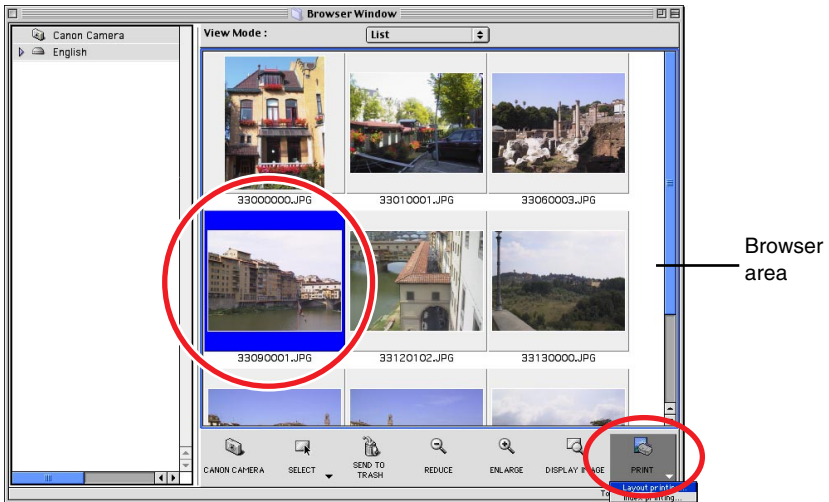
Starting ImageBrowser

- 1 Double-click the [Canon ImageBrowser] icon on the desktop.
If the [Canon ImageBrowser] icon does not appear on the desktop, double-click the [Canon Utilities] folder, [ImageBrowser] folder, and [ImageBrowser] icon.



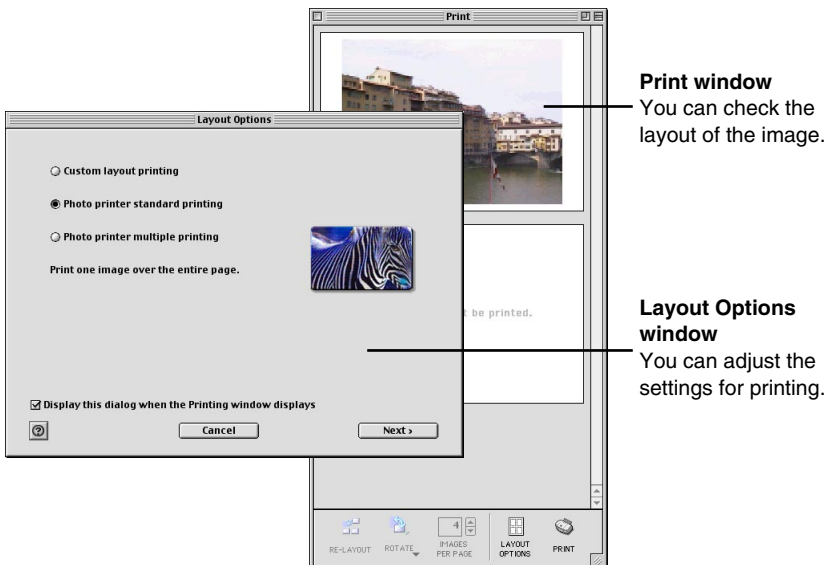
Selecting an Image for Printing

- 1 Select an image you want to print from the browser area. Click the  (PRINT) button to display a menu. From the menu, select [Layout printing].



When the CP-220 or CP-330 is selected, you cannot select [Index printing].

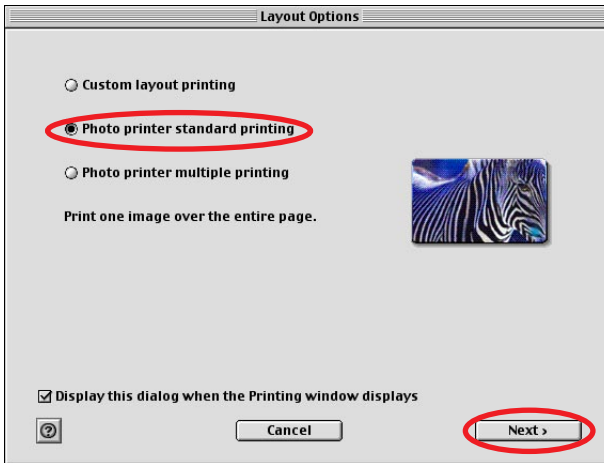
The Print window and Layout Options window appear.



Selecting a Layout Type

This section describes how to select a layout type, and then print on standard sheets or full-size label sheets. For information on how to print on 8-label sheets, see *Printing Duplicate Images on an 8-Label Sheet* (⇒ p.27) or see *Printing Different Images on an 8-Label Sheet* (⇒ p.30).

1 Select “Photo printer standard printing” in the Layout Options window and then click the [Next] button.



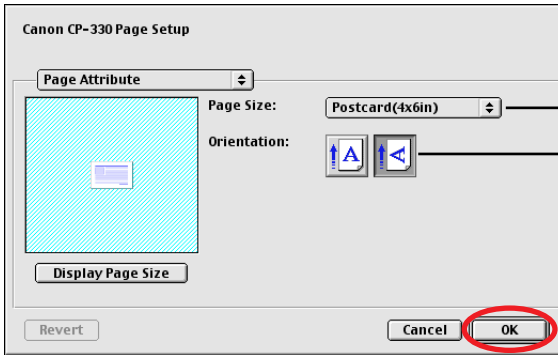
Selecting “Custom layout printing” in the Layout Options window allows you to freely specify the size and position of images for printing. You can also use this option to add text in the Print window to create greeting cards and so on. There are 3 methods for adding text, as shown below.

- To add a caption to an image: Click the image and select [Edit Caption] from the [Edit] menu.
- To edit the page title: Select [Edit Header] from the [Edit] menu.
- To insert text: Select [Add Text] from the [Edit] menu.

2 Click the [Page setup] button.



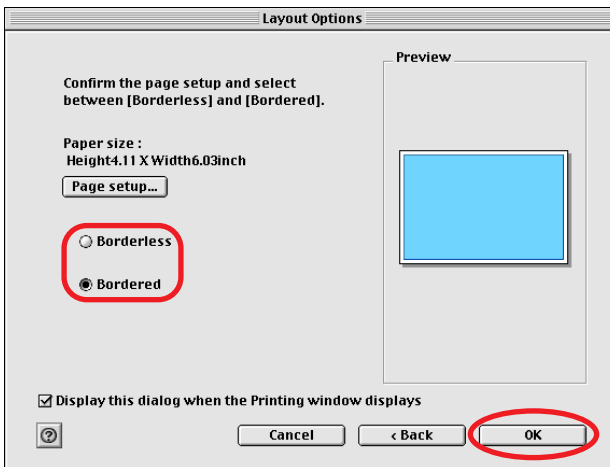
- 3** Make [Paper Size] and [Orientation] selections, and then click the [OK] button.



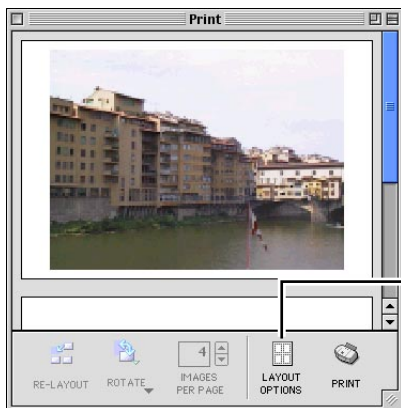
Select the paper size.

Select the paper direction.

- 4** After returning to the Layout Options window, select “Bordered” or “Borderless”, then click the [OK] button.
If you select “Bordered”, the image is automatically resized to fit within the print.



The layout settings are reflected in the Print window.



[LAYOUT OPTIONS] button
Redisplays the Layout Options window, where you can change the settings.

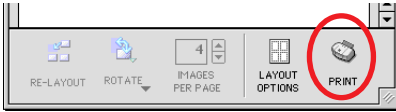
*The image shown is bordered.



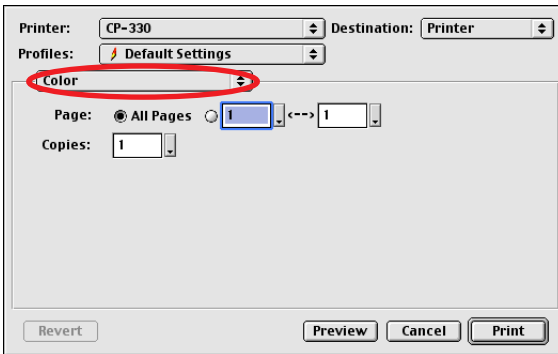
Setting the Printer Driver for Printing

This section describes printing with modified printer driver settings.

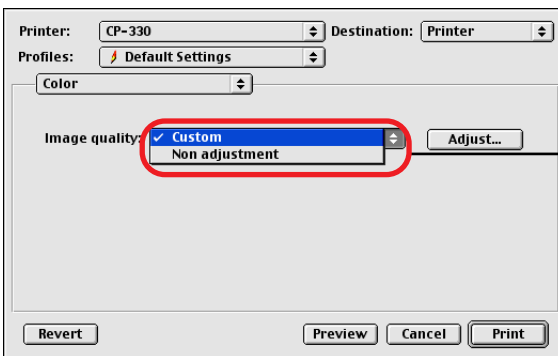
1 Click the  (PRINT) button.



2 Select [Color].



3 To adjust image quality, select [Custom].



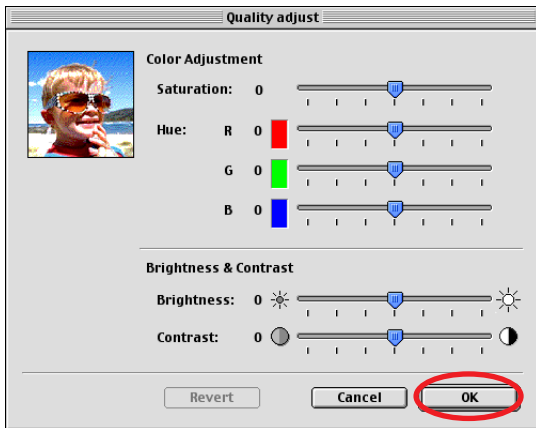
The default is [Non adjustment].

Custom

Click the [Adjust] button to adjust image quality freely.

- 4 After selecting [Custom] and clicking the [Adjust] button, adjust the brightness and color of the print result, then click the [OK] button.

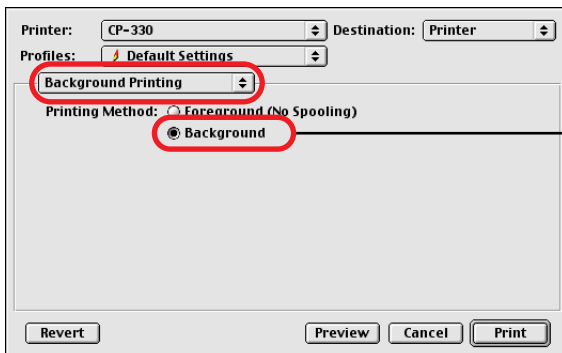
For details, check the balloon help.



Adjust the color of prints.

Adjust the brightness and contrast of prints.

- 5 Select [Background Printing] and select a printing method.



Select [Background Printing] to print in the background. This allows you to use other applications while printing.

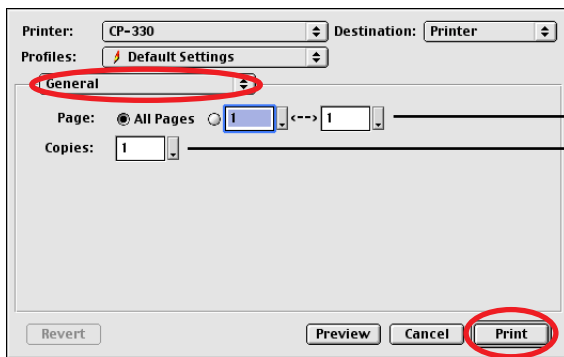
6 Select [General], set the various options, and then click the [Print] button.

Verify that the CP-330 or CP-220 is selected in [Printer]. For [Destination], you can select the following types of output.

- Printer: Output is directed to the printer.
- File: Output is directed to a PICT file.



When printing in the background, printing cannot be resumed if the printer runs out of paper while printing. To avoid this, load more sheets of paper than required for the number of images to be printed.



When multiple images are selected, specify the pages (images) to be printed.

To print multiple copies of images, enter the number of prints desired.

Printing starts.



If you stop printing while printing is in progress, paper is ejected to the paper handling slot and an error message may be displayed. This is not a malfunction, but a mechanism for protecting the print head.

If you interrupt printing while it is in progress, be sure to check the printer status.

- **When the indicator light is green:**
You can continue to print.
- **When the indicator light is red:**
Temporarily remove paper from the paper handling slot. Turn the printer off and then back on again. Make sure the indicator light is now green, and then print again.

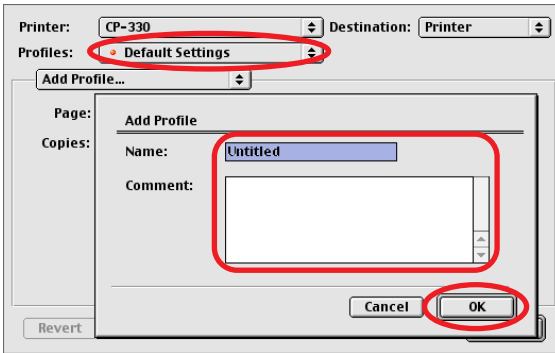
Note that when printing is interrupted, one print's equivalent of the ink cassette's ink sheet is used.

Registering Profiles

You can save [Color] and [Background Printing] settings as [Profiles].

■ To register a profile

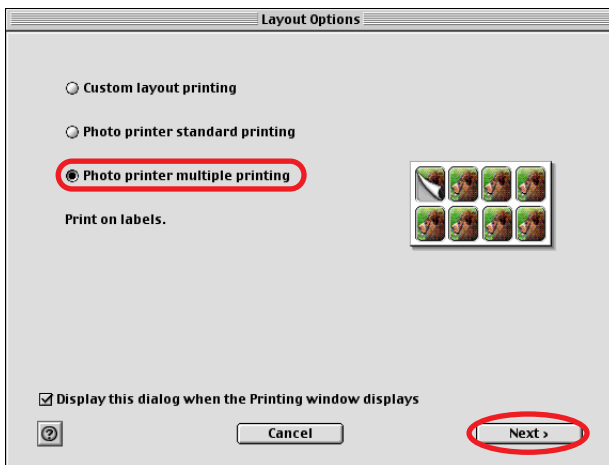
- 1 Make [Color] and [Background Printing] settings.
- 2 Select [Add Profile] from the [Default Settings] menu, type in a name and comment, and then click the [OK] button.



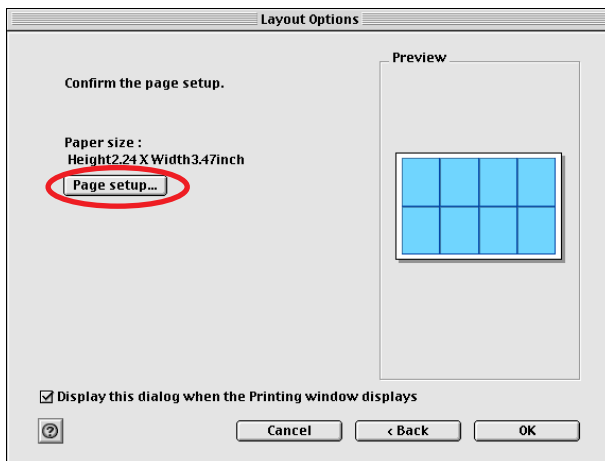
Printing Duplicate Images on an 8-Label Sheet

ImageBrowser allows you to print duplicate images. This makes it possible to print multiple copies of the same image on an 8-label sheet.

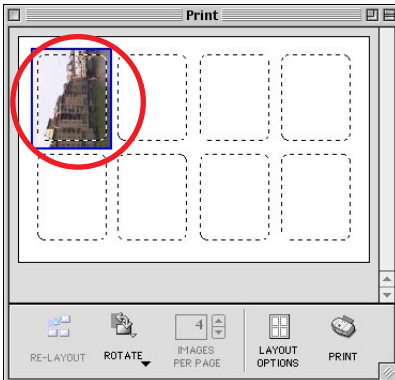
- 1 In the **Layout Options** window, select “**Photo printer multiple printing**”, and then click the **[Next]** button.



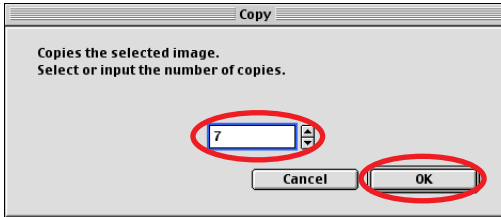
- 2 Click the **[Page setup]** button.



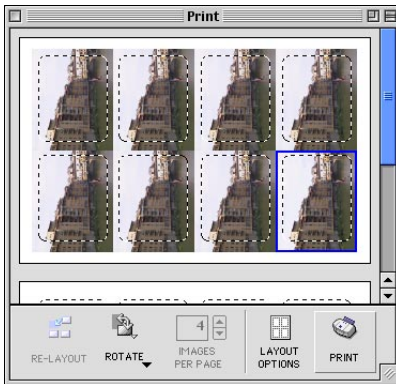
- 3 For [Paper Size], select [CP_C size (L)], select the orientation, and then click the [OK] button.
- 4 After returning to the Layout Options window, click the [OK] button.
Images are resized to fit the label dimensions and are displayed in the Print window.
- 5 Click the image and select [Copy Image] on the ImageBrowser [Edit] menu.




6 Enter 7 and click the [OK] button.



The images are laid out in replicate, with their positions adjusted for the eight labels on the 8-label sheet.



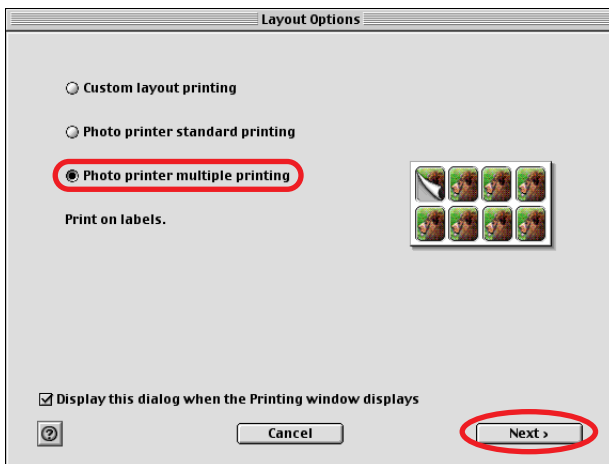
7 Click the  (PRINT) button to start printing.



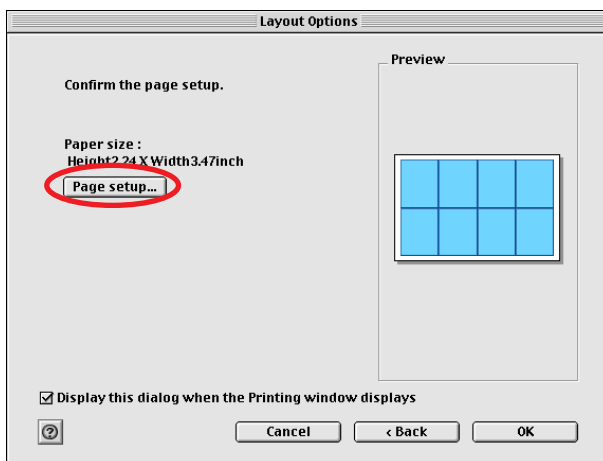
Printing Different Images on an 8-Label Sheet

You can also print a combination of different images on an 8-label sheet.

- 1 In the Layout Options window, select “Photo printer multiple printing”, and then click the [Next] button.



- 2 Click the [Page setup] button.




- 3 For [Paper Size], select [CP_C size (L)], select the orientation, and then click the [OK] button.

- 4 After returning to the Layout Options window, click the [OK] button.
- 5 From the browser area, drag and drop the images to be printed onto the Print window.

The different images are laid out with their positions adjusted for the eight labels on the 8-label sheet.



- 6 Click the  (PRINT) button to start printing.



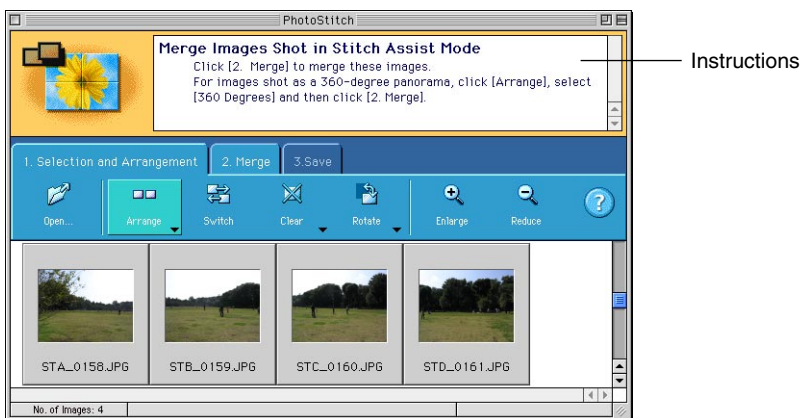
Merging Images to Print a Panorama

You can create panoramic images by merging multiple images, and then printing them on wide paper. This operation is performed using the PhotoStitch software.



When you use images captured with a Canon digital camera in Stitch Assist mode, PhotoStitch determines the order and direction of the composition automatically, facilitating the composition process.

- 1 Open ImageBrowser and select the series of images you want to merge from the browser area.**
- 2 Select [PhotoStitch] from the [Edit] menu.**
PhotoStitch starts.
- 3 Merge the images following the instructions in the guidance panel at the top of the PhotoStitch window.**



- 4 Save your panoramic image, and then close PhotoStitch.**
- 5 Print the panoramic image.**



To print the merged images, see [Selecting an Image for Printing](#) (→ p.19).

Printing Part of an Image (Trimming)

You can select and then print a portion of an image (trimming).

This is useful when you only want to print part of an image, or if the part you are most interested in is not at the center of the image.

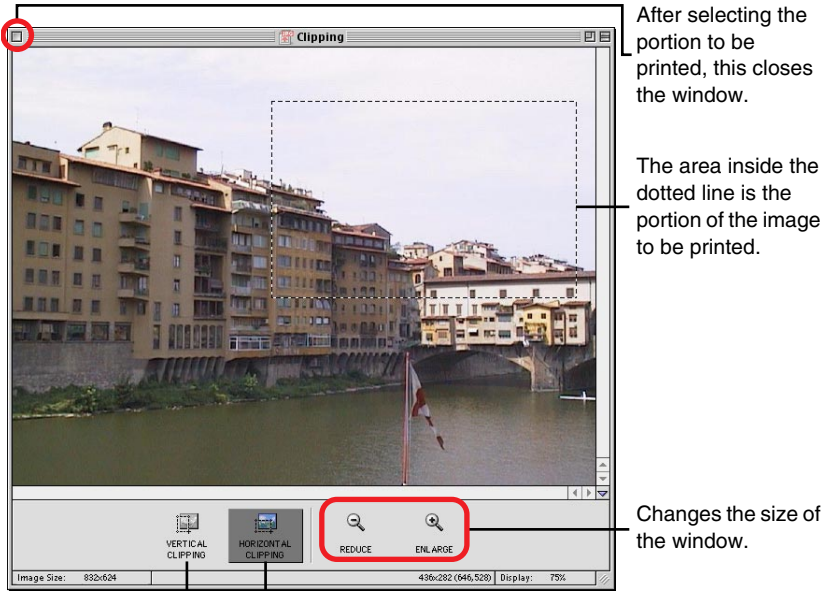


- You can print portions of images selected from any type of layout.
- The length-to-width ratio cannot be modified if you select “Photo printer standard printing” in the Layout Options window, and then specify “Borderless”, or if you select “Photo printer multiple printing”. Also, because a 1 - 3 mm border is trimmed from the image during printing, we recommend that you select an area that is slightly larger than the part of the image you want to print.

- 1 Click the image you want to print, then select [Clipping] on the ImageBrowser [Edit] menu.

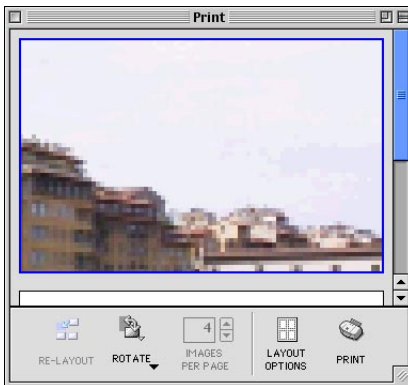


2 Select the portion of the image to be printed, then close the Clipping window.



Clicking here changes the orientation of the trim frame.
These buttons do not appear when "Bordered" is selected.
One orientation or the other is selected by default when "Bordered" is not selected.

The Clipping window closes and the selected area appears in the Print window.



3 Click the  (PRINT) button to start printing.



Printing with Image Quality Correction

ImageBrowser has a function that supports Exif 2.2 (referred to as Exif Print), allowing you to automatically optimize print quality and print clearer, better-looking images.



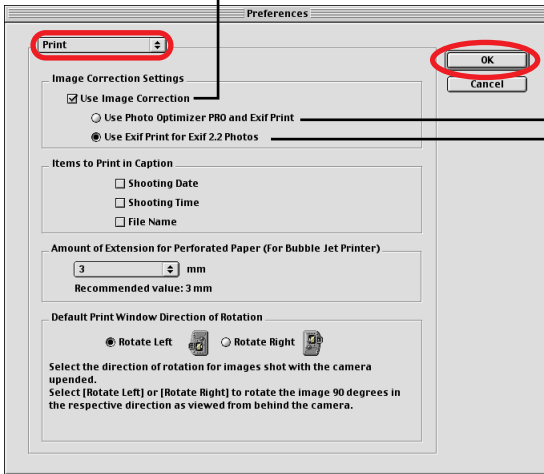
The image quality correction is adopted for all images printed from ImageBrowser.

- 1 Click the image you want to print, and select [Preferences] from the ImageBrowser [Edit] menu.



2 Select [Print] in the Preferences window, set image quality correction, and then click the [OK] button.

Be sure to select the check box when using image quality correction.



Automatically corrects images captured with Exif 2.2 compatible cameras and other images.

Automatically corrects only images captured with Exif 2.2 compatible cameras.

3 Click the (PRINT) button to start printing.




Camera information such as scene and photographic conditions are embedded in images captured with cameras compatible with Exif 2.2 (referred to as Exif Print). This information can be passed onto the printer through ImageBrowser (Exif Print-compatible software) so that prints are clearer.

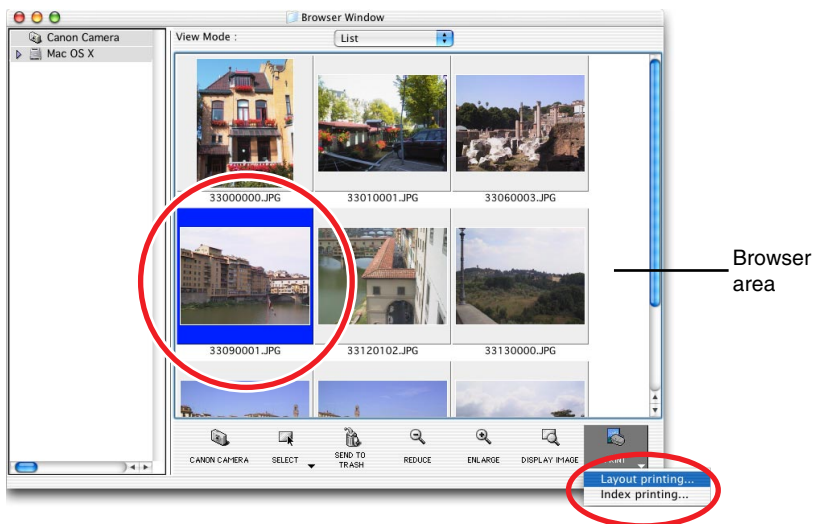
With Mac OS X


Starting ImageBrowser

- 1 Double-click the [Canon ImageBrowser] icon on the desktop.
If the [Canon ImageBrowser] icon does not appear on the desktop, double-click the [Canon Utilities] folder, [ImageBrowser] folder, and [ImageBrowser] icon.

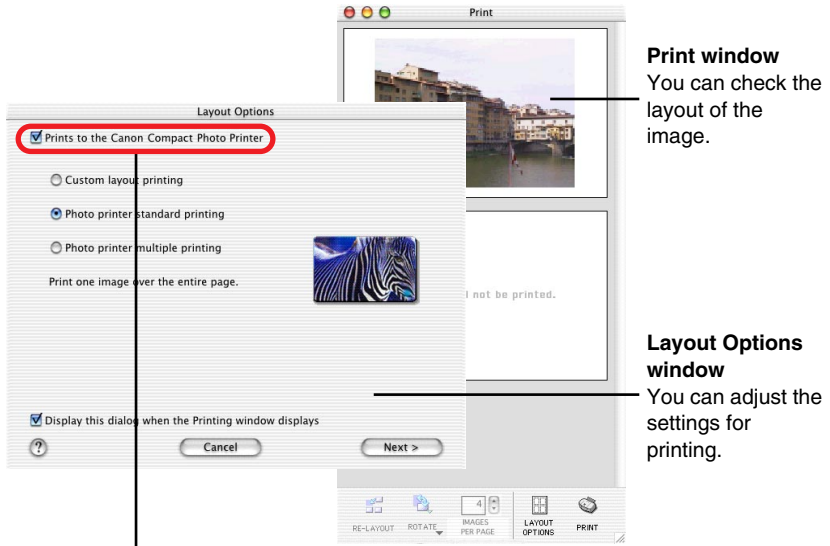
Selecting an Image for Printing

- 1 Select an image you want to print from the browser area. Click the  (PRINT) button to display a menu. From the menu, select [Layout printing].



To use index printing, display the Index Printing window by clicking the  (PRINT) button and selecting [Index printing] from the menu that appears. Set thumbnail and paper sizes, then click the [Start printing] button to start index printing.

The Print window and Layout Options window appear.



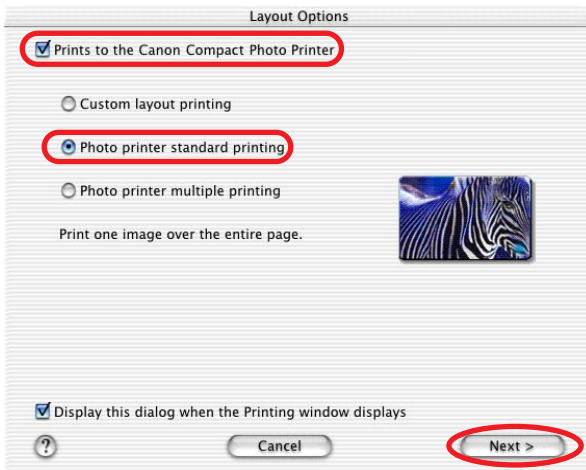
When [Prints to the Canon Compact Photo Printer] is not displayed, install the CP-330 or CP-220 printer driver (➔ p.8).



Selecting a Layout Type

This section describes how to select a layout type, and then print on standard sheets or full-size label sheets. For information on how to print on 8-label sheets, see *Printing Duplicate Images on an 8-Label Sheet* (⇒ p.46) or see *Printing Different Images on an 8-Label Sheet* (⇒ p.49).

- 1 In the Layout Options window, select “Prints to the Canon Compact Photo Printer”, select “Photo printer standard printing”, and then click the [Next] button.**

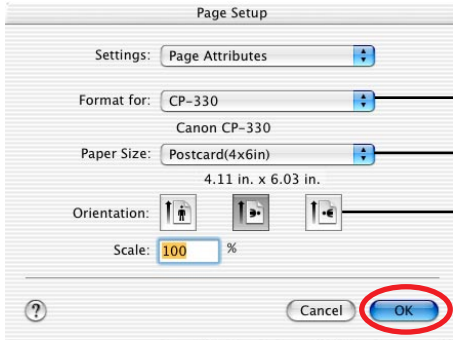


Selecting “Custom layout printing” in the Layout Options window allows you to freely specify the size and position of images for printing. You can also use this option to add text in the Print window to create greeting cards and so on. There are 3 methods for adding text, as shown below.

- To add a caption to an image: Click the image and select [Edit Caption] from the [Edit] menu.
- To edit the page title: Select [Edit Header] from the [Edit] menu.
- To insert text: Select [Add Text] from the [Edit] menu.

- 2 Click the [Page Setup] button.**

- 3 In [Format for] select [CP-330] or [CP-220], make [Paper Size] and [Orientation] selections, and then click the [OK] button.



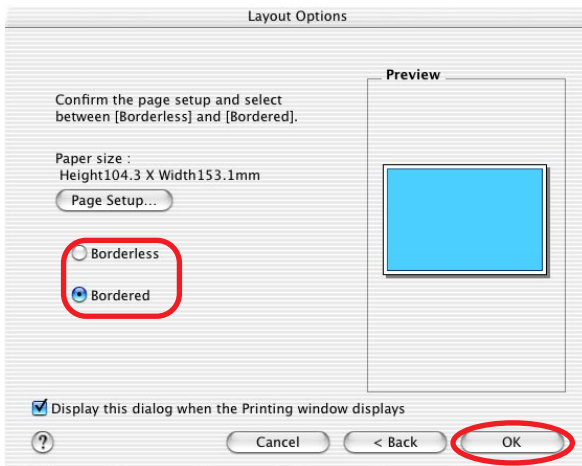
Select [CP-330] or [CP-220].

Select the paper size.

Select the paper direction.

- 4 After returning to the Layout Options window, select “Bordered” or “Borderless”, then click the [OK] button.

If you select “Bordered”, the image is automatically resized to fit within the print.



The layout settings are reflected in the Print window.



[LAYOUT OPTIONS] button
Redisplays the Layout Options window, where you can change the settings.

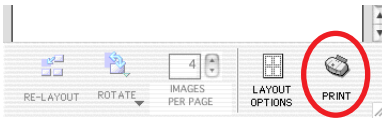
*The image shown is bordered.



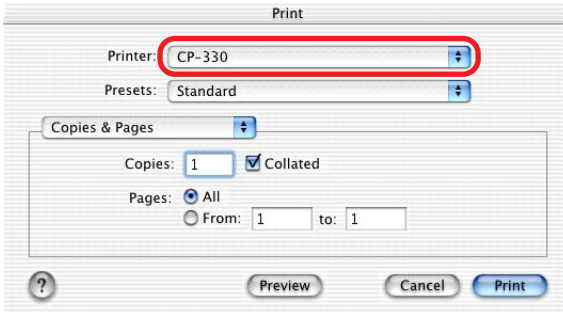
Setting the Printer Driver for Printing

This section describes printing with modified printer driver settings.

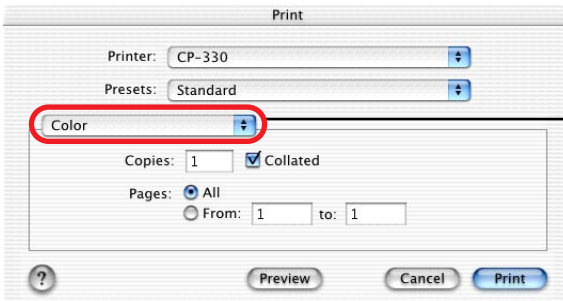
- 1 Click the  (PRINT) button.



- 2 In [Printer] select [CP-330] or [CP-220].



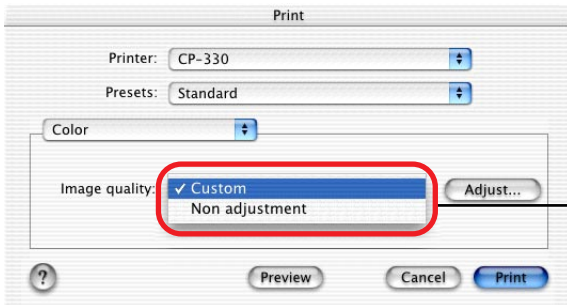
- 3 Select [Color].



This pop-up menu contains various settings. (Do not change the [Layout] setting.)



4 To adjust image quality, select [Custom].



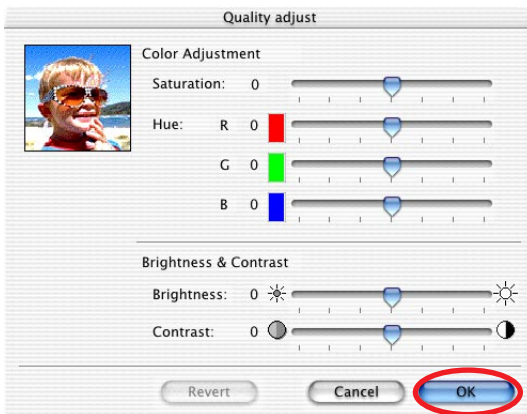
The default is [Non adjustment].

Custom

Click the [Adjust] button to adjust image quality freely.

5 After selecting [Custom] and clicking the [Adjust] button, adjust the brightness and color of the print result, then click the [OK] button.

For details, check the help menu.



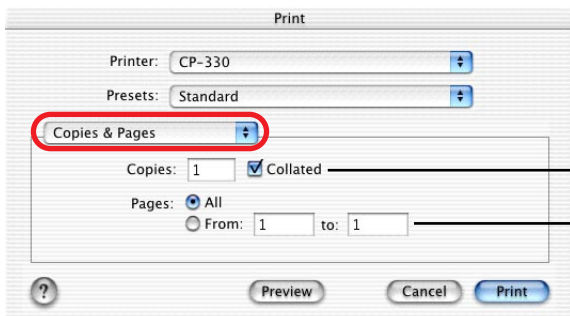
Adjust the color of prints.

Adjust the brightness and contrast of prints.

6 Select [Copies & Pages], and set the various options.



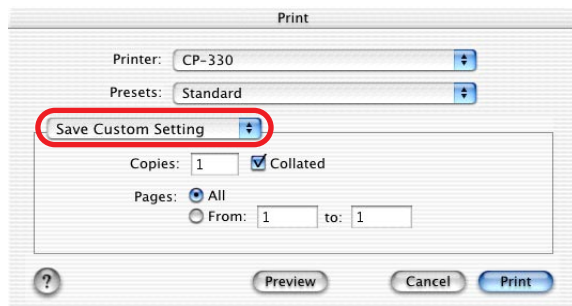
When printing in the background, printing cannot be resumed if the printer runs out of paper while printing. To avoid this, load more sheets of paper than required for the number of images to be printed.



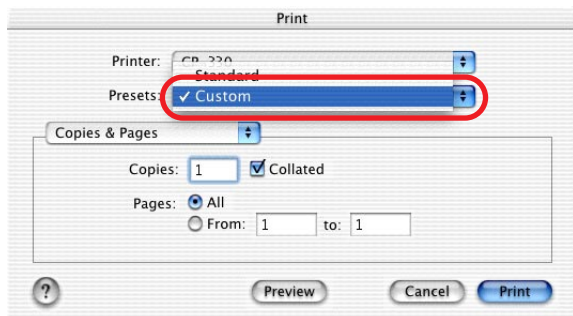
To print multiple copies of images, enter the number of prints desired.

When selecting multiple images, specify the pages (images) to be printed.

Selecting [Save Custom Setting] allows you to save the current settings for [Copies & Pages], [Layout], [Output Options] and [Color]. For Mac OS X v10.2/v10.3, the same settings can be saved when selecting [Save As] in [Presets].



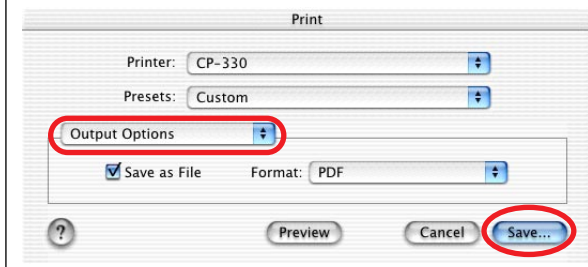
To use a registered setting, select [Custom]. For Mac OS X v10.2/v10.3, select the name you entered after selecting [Save As] in [Presets].



7 Click the [Print] button.

Printing starts.

You can save data as a PDF file by selecting [Output Options], selecting "Save as File" and then clicking the [Save] button.



If you stop printing while printing is in progress, paper is ejected to the paper handling slot and an error message may be displayed. This is not a malfunction, but a mechanism for protecting the print head.

If you interrupt printing while it is in progress, be sure to check the printer status.

- **When the indicator light is green:**

You can continue to print.

- **When the indicator light is red:**

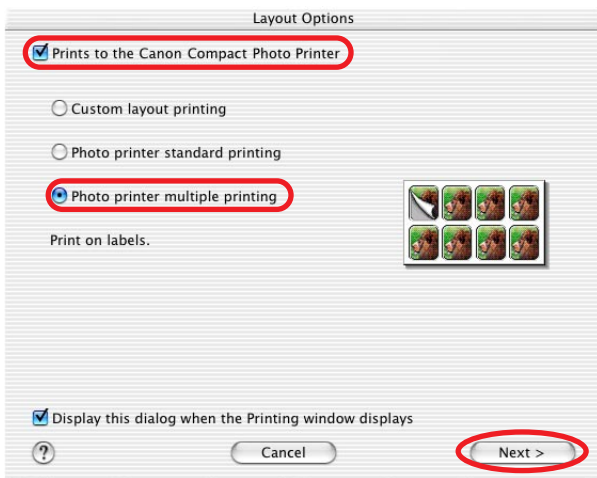
Temporarily remove paper from the paper handling slot. Turn the printer off and then back on again. Make sure the indicator light is now green, and then print again.

Note that when printing is interrupted, one print's equivalent of the ink cassette's ink sheet is used.

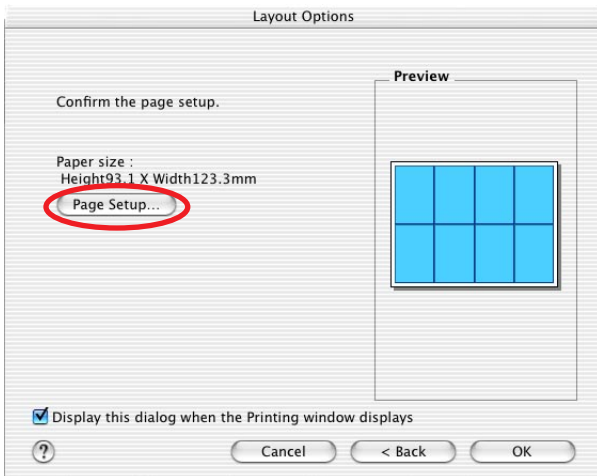
Printing Duplicate Images on an 8-Label Sheet

ImageBrowser allows you to print duplicate images. This makes it possible to print multiple copies of the same image on an 8-label sheet.

- 1 In the **Layout Options** window, select “Prints to the Canon Compact Photo Printer”, select “Photo printer multiple printing”, and then click the **[Next]** button.



- 2 Click the **[Page Setup]** button.



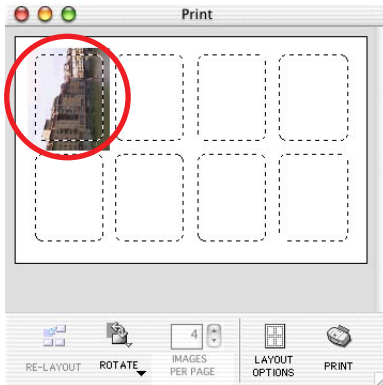
- 3 In **[Format for]** select **[CP-330]** or **[CP-220]**.

- 4** For [Paper Size], select [CP_C size (L)], select the orientation, and then click the [OK] button.

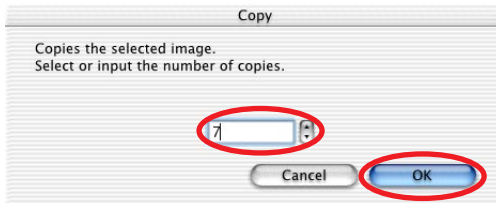
Images are resized to fit the label dimensions and are displayed in the Print window.

- 5** After returning to the Layout Options window, click the [OK] button.

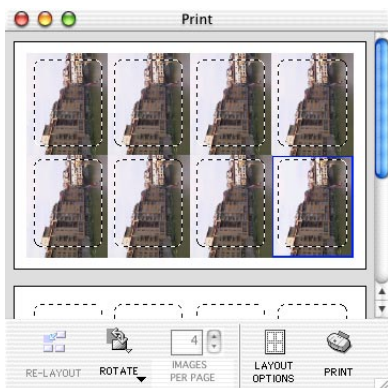
- 6** Click the image and select [Copy Image] on the ImageBrowser [Edit] menu.




- 7** Enter 7 and click the [OK] button.



The images are laid out in replicate, with their positions adjusted for the eight labels on the 8-label sheet.



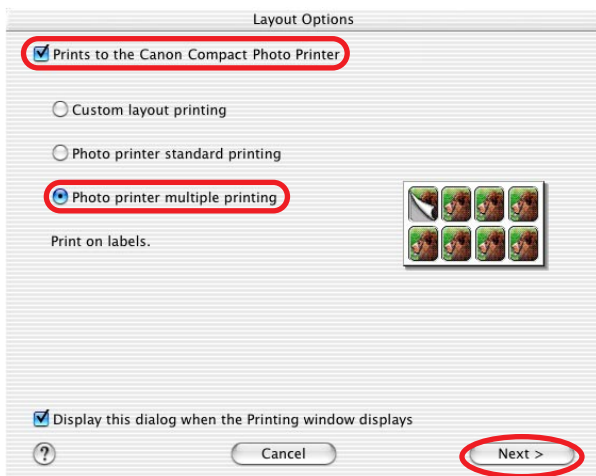
8 Click the  (PRINT) button to start printing.



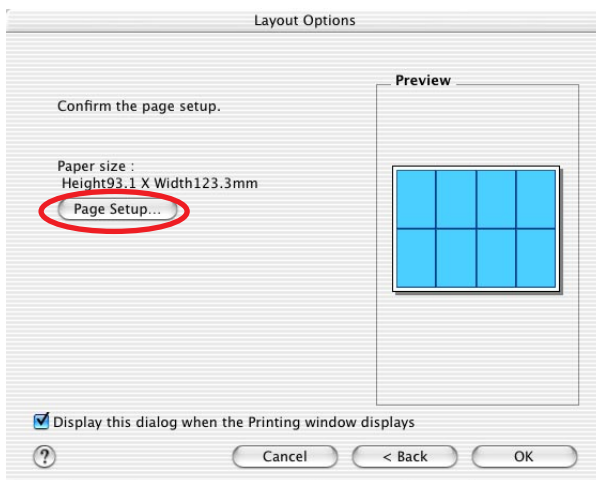
Printing Different Images on an 8-Label Sheet

You can also print a combination of different images on an 8-label sheet.

- 1 In the **Layout Options** window, select “Prints to the Canon Compact Photo Printer”, select “Photo printer multiple printing”, and then click the **[Next]** button.



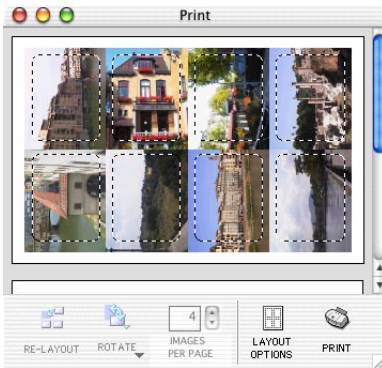
- 2 Click the **[Page Setup]** button.




- 3 In **[Format for]** select **[CP-330]** or **[CP-220]**.

- 4 For [Paper Size], select [CP_C size (L)], select the orientation, and then click the [OK] button.
- 5 After returning to the Layout Options window, click the [OK] button.
- 6 From the browser area, drag and drop the images to be printed onto the Print window.

The different images are laid out with their positions adjusted for the eight labels on the 8-label sheet.



- 7 Click the  (PRINT) button to start printing.



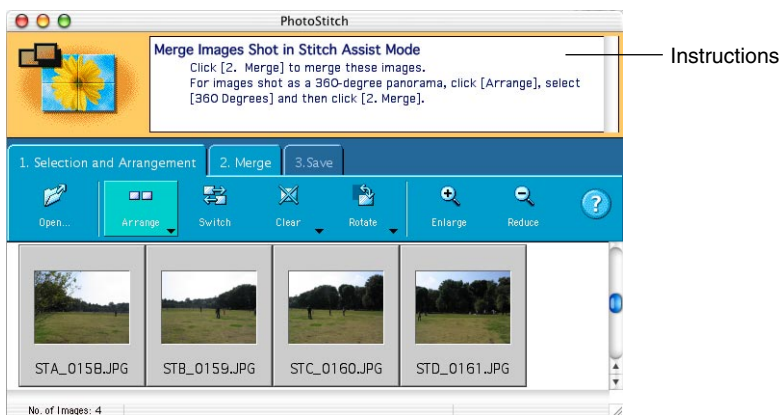
Merging Images to Print a Panorama

You can create panoramic images by merging multiple images, and then printing them on wide paper. This operation is performed using the PhotoStitch software.



When you use images captured with a Canon digital camera in Stitch Assist mode, PhotoStitch determines the order and direction of the composition automatically, facilitating the composition process.

- 1 Open ImageBrowser and select the series of images you want to merge from the browser area.**
- 2 Select [PhotoStitch] from the [Edit] menu.**
PhotoStitch starts.
- 3 Merge the images following the instructions in the guidance panel at the top of the PhotoStitch window.**



- 4 Save your panoramic image, and then close PhotoStitch.**
- 5 Print the panoramic image.**



To print the merged images, see [Selecting an Image for Printing](#) (→ p.37).

Printing Part of an Image (Trimming)

You can select and then print a portion of an image (trimming).

This is useful when you only want to print part of an image, or if the part you are most interested in is not at the center of the image.



- You can print portions of images selected from any type of layout.
- The length-to-width ratio cannot be modified if you select “Photo printer standard printing” in the Layout Options window, and then specify “Borderless”, or if you select “Photo printer multiple printing”. Also, because a 1 - 3 mm border is trimmed from the image during printing, we recommend that you select an area that is slightly larger than the part of the image you want to print.

- 1 Click the image you want to print in the Print window (→ p.38), then select [Clipping] on the ImageBrowser [Edit] menu.



2 Select the portion of the image to be printed, then close the Clipping window.



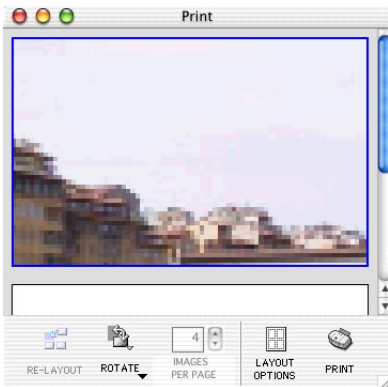
After selecting the portion to be printed, this closes the window.


The area inside the dotted line is the portion of the image to be printed.

Changes the size of the window.

Clicking here changes the orientation of the trim frame.
These buttons do not appear when "Bordered" is selected.
One orientation or the other is selected by default when "Bordered" is not selected.

The Clipping window closes and the selected area appears in the Print window.



3 Click the  (PRINT) button to start printing.



Printing with Image Quality Correction

ImageBrowser has a function that supports Exif 2.2 (referred to as Exif Print), allowing you to automatically optimize print quality and print clearer, better-looking images.



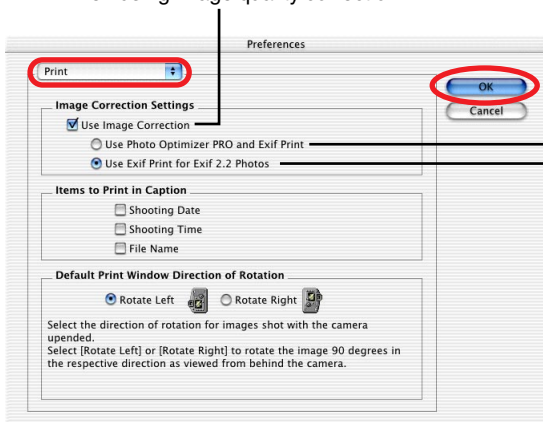
The image quality correction is adopted for all images printed from ImageBrowser.

- 1 Click the image you want to print, and select [Preferences] from the ImageBrowser [ImageBrowser] menu.




- 2 Select [Print] in the Preferences window, set image quality correction, and then click the [OK] button.

Be sure to select the check box when using image quality correction.



Automatically corrects images captured with Exif 2.2 compatible cameras and other images.

Automatically corrects only images captured with Exif 2.2 compatible cameras.

3 Click the  (PRINT) button to start printing.




Camera information such as scene and photographic conditions are embedded in images captured with cameras compatible with Exif 2.2 (referred to as Exif Print). This information can be passed onto the printer through ImageBrowser (Exif Print-compatible software) so that prints are clearer.



Appendices

About the Print Area and Pixels

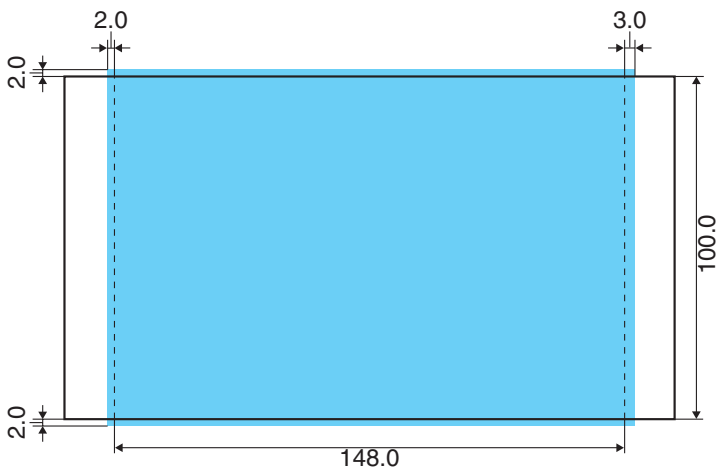
Print Area

The shaded area () in the following diagrams indicates the maximum printable area.

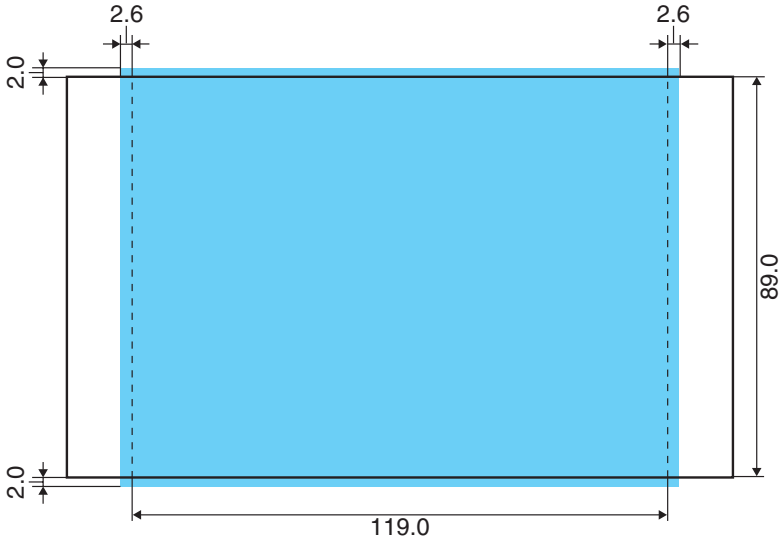
Note that because the print area is larger than the actual paper size, a border is trimmed from the image when it is printed.

(shown in millimeters)

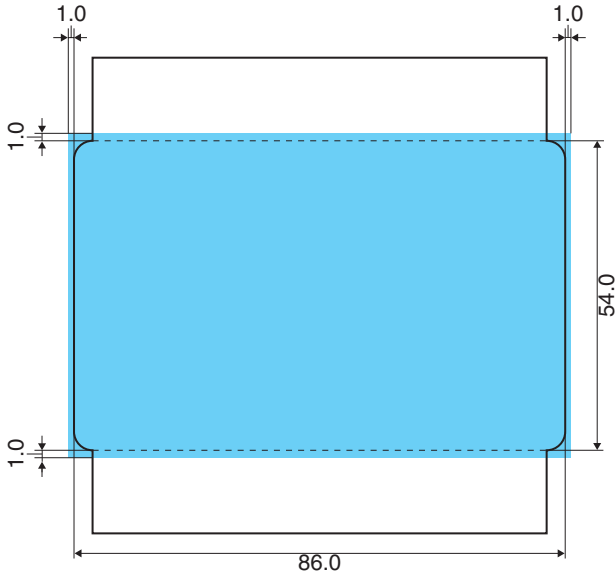
Postcard size sheet



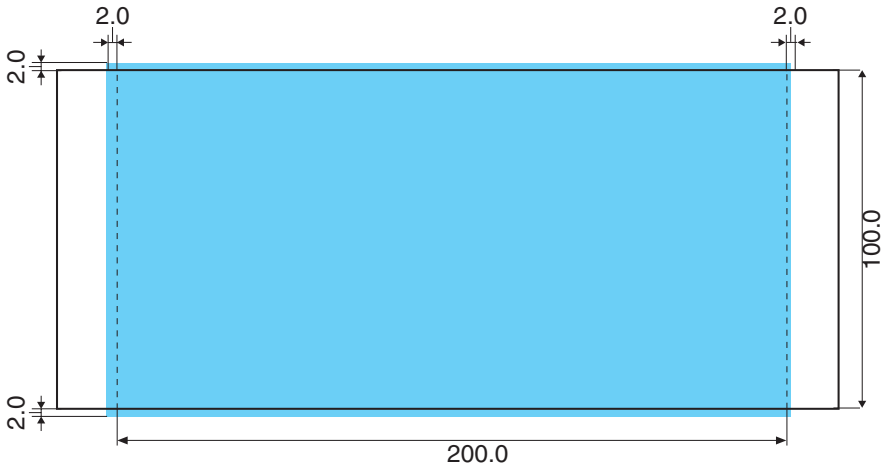
L size sheet



Credit card size sheet/full-size label sheet



Wide size sheet



Number of Pixels

Paper Type	Total number of pixels (dots)*	Effective number of pixels (dots)
Postcard size sheet	1232 × 1808	approx. 1180 × 1748
L size sheet	1100 × 1456	approx. 1050 × 1406
Credit card size sheet/ full-size label sheet	672 × 1066	approx. 638 × 1016
Wide size sheet	1232 × 2416	approx. 1180 × 2362

* Number of pixels of print area. This also includes the border that is trimmed from around an image during printing.



Troubleshooting

This section describes how to troubleshoot problems.



If the problem still exists after trying these solutions, restart your computer.
If the problem still persists, uninstall the printer driver and then install it again.

Printing does not start.

Cause : No power is supplied to the printer.

Correction : Make sure the indicator on the printer light is green. (⇒ p.14)

Cause : The USB cable is not connected correctly.

Correction : Check the USB cable to make sure it is connected correctly. (⇒ p.15)

Cause : Your printer is not selected as the output destination
(Mac OS 9.0 - 9.2 only).

Correction : In the Chooser dialog, select the printer. (⇒ p.18)

Cause : The queue is stopped. (When printing in the background)

Correction : Restart the print queue from the [File] menu of the Printer Monitor.

Printing stops while it is in progress.

Cause : The USB cable is not connected correctly.

Correction : Check the USB cable to make sure it is connected correctly. (⇒ p.15)

Cause : A USB hub is being used for the connection.

Correction : Be sure to use the USB cable to connect the printer directly to your computer. If you connect via a USB hub, the printer may not function properly.

The color of an image seen on the screen is different from that seen in prints.

Correction : Printers and computer displays use different color reproduction methods, and lighting conditions and display settings affect the appearance of colors on your computer's display. However, you can adjust color using [Adjust] (Mac OS 9.0 - 9.2 ⇒ p.24, Mac OS X ⇒ p.43).



Error Messages

If an error occurs while printing is in progress, an error message appears on the screen of your computer.

This section contains a list of error messages as well as the information on how to troubleshoot them.



- If the error does not go away after you have tried the recommended solutions, consult your nearest Canon Customer Support Help Desk.
- Use the information in this section in conjunction with the *Printer User Guide*.

■ Errors where printing can resume

If any of the following messages appear, printing can still resume. After using the recommended solution to clear the error, printing restarts automatically.

Printer error

Ink cassette is empty.

To resume printing, insert a new ink cassette.

Cause : There is no more ink in the ink cassette.

Correction : Replace the ink cassette with a new one.

Printer error

No ink cassette installed in printer.

To enable printing, insert an ink cassette.

Cause : The ink cassette is not inserted into the printer.

Correction : Insert the ink cassette into the printer.



**No paper.
Check that paper is correctly loaded in the paper cassette,
and that the paper cassette is correctly installed.**

Cause : The paper cassette is not inserted correctly.

Correction : Remove the paper cassette, and then insert it back into the printer correctly.

Cause : Paper is not inserted correctly in the paper cassette.

Correction : Remove the paper, and then insert it back into the paper cassette correctly.

Cause : There is no paper in the paper cassette.

Correction : Add more paper to the paper cassette.



When printing in the background, printing cannot be resumed if the printer runs out of paper while printing. To avoid this, load more sheets of paper than required for the number of images to be printed.

After using the recommended solution to clear the error, press the [Resume] button to resume printing.

**Printer is not responding. Check the printer power connection,
make sure the printer is switched on, and then try again.**

Cause : No power supplied to the printer.

Correction : Make sure the indicator on the printer light is green. (⇒ p.14)

Cause : The USB cable is not connected correctly.

Correction : Check the USB cable to make sure it is connected correctly. (⇒ p.15)

No Paper Cassette has been found. Insert an appropriate Paper Cassette.

Cause : The paper cassette is not inserted.

Correction : Insert the paper cassette into the printer.



Wrong type of paper. Replace the Paper.

Cause : The paper is not suitable for the print settings.

Correction : Replace the paper with the correct size.

Wrong type of Paper Cassette. Check the Paper Cassette.

Cause : The paper cassette in the printer is not suitable for the print settings.

Correction : Insert the correct paper cassette.

**The specified Ink Cassette cannot be found.
Replace the Ink Cassette.**

Cause : The ink cassette in the printer is not suitable for the print settings.

Correction : Insert the correct ink cassette.

**The specified Ink Cassette and Paper cannot be found.
Replace the Ink Cassette and Paper.**

Cause : The ink cassette and paper in the printer are not suitable for the print settings.

Correction : Insert the correct ink cassette and paper.

**The battery capacity of the printer is insufficient.
Please connect AC adapter,
or stop printing and replace the battery.**

Cause : The printer's battery charge is running low. The printer will not work.

Correction : Use a new or fully charged battery pack, or use the printer with the AC adapter (compact adapter) connected.



■ Errors where printing is canceled

If any of the following messages appear, printing is canceled. After using the recommended solution to clear the error, you need to start the print job over again.

Paper jammed in printer.

Clear the jam as follows, then try printing again.

1. Remove the paper that caused the error.
2. Turn printer off and back on.

Cause : Paper is jammed inside the printer while printing, or there is paper still inside the printer before printing starts.

Correction : After closing the dialog, turn the printer off and then back on again. Paper is automatically ejected from the print receptacle or the paper handling slot. Remove the paper and then turn the printer off and back on again a second time, and start the print job over.

Problem with ink cassette.

Correct as follows, then try printing again.

1. Check the state of the ink cassette.
2. Turn printer off and back on.
3. Remove the paper that caused the error.

Cause : There is a problem with the ink cassette.

Correction : Take out the ink cassette from the printer. Remove any slack from the ink sheet and then insert the ink cassette back into the printer. If the problem still continues, replace the ink cassette with a new one.

Communication error. Switch the printer off and on again, and then start the print job again.

Cause : There is a problem with communications.

Correction : Turn printer off and back on.



**Error in printer.
Turn printer off and back on, then try printing again.**

Cause : The printer was not initialized successfully.

Correction : Turn printer off and back on, then try printing again.

Cause : There is too much paper in the paper cassette.

Correction : Remove paper from the paper cassette, and then make sure to load the correct amount of paper in the paper cassette.

In other cases, such as when you specify output for a file or other errors related to your system occur, follow the error messages displayed to proceed.



Free Manuals Download Website

<http://myh66.com>

<http://usermanuals.us>

<http://www.somanuals.com>

<http://www.4manuals.cc>

<http://www.manual-lib.com>

<http://www.404manual.com>

<http://www.luxmanual.com>

<http://aubethermostatmanual.com>

Golf course search by state

<http://golfingnear.com>

Email search by domain

<http://emailbydomain.com>

Auto manuals search

<http://auto.somanuals.com>

TV manuals search

<http://tv.somanuals.com>